

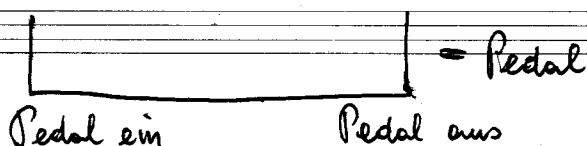
Thema (alte Melodie) mit
Variationen (im Stile v.
Paganini)

für
Flöte + Klavier

1958

(Adolf Scherbaum)

(Bearbeitung für Flöte und Streichorchester)
Klavierauszug = (Pantitur.)



N.B. Diese Variationen sind nur für die Virtuosität bestimmt. Der Solist soll das ganze Register (die Möglichkeiten auf der Flöte) voll zur Geltung bringen. Musikalisch ist das ganze ~~ein~~ eine Parodie auf die Zeit des 19. Jahrhunderts = der Zeit der Virtuosen (Unwesens!).

1.

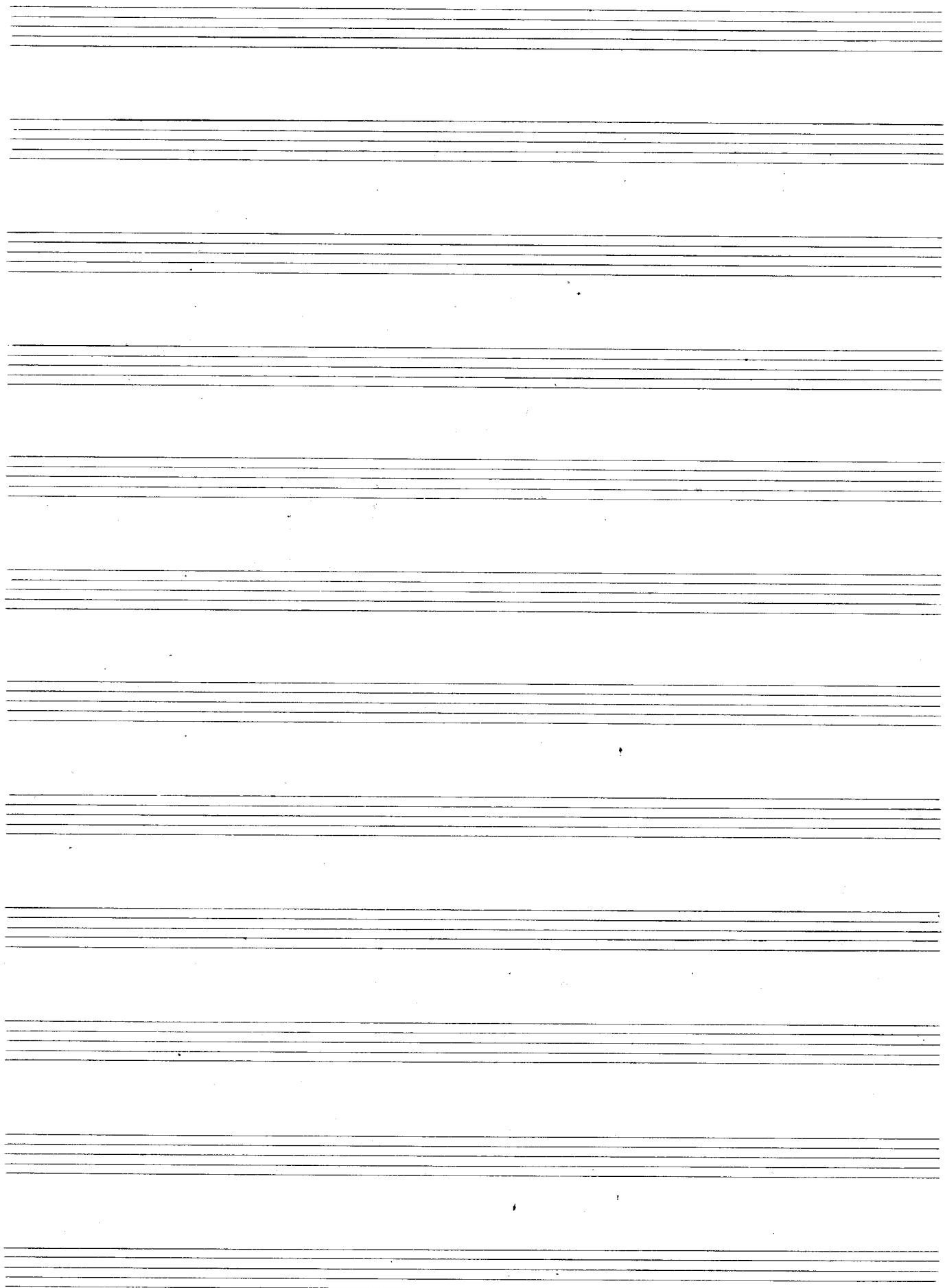
frei — Thema (alte Melodie)

Handwritten musical notation for the first system, measures 1-4. The top staff is the melody, and the bottom two staves are the piano accompaniment. Measure 1 starts with a piano (p) dynamic and a forte (f) dynamic. The piano accompaniment features chords and arpeggiated figures.

Handwritten musical notation for the second system, measures 5-8. The top staff continues the melody, and the piano accompaniment continues with chords and arpeggios. A piano (p) dynamic is marked in measure 7. The system ends with a double bar line.

Handwritten musical notation for the third system, measures 9-12. The top staff continues the melody, and the piano accompaniment continues with chords and arpeggios. Dynamics include fortissimo (ff) and piano (p). The system ends with a double bar line and the marking "D.C."

F - F - F



2. Variation

nasale

f

f

pp

pp

dir

Handwritten musical score for the first system. The top staff is for the flute, marked with a dynamic of $p=$. It contains a long slur over a series of notes. The bottom two staves are for the piano, also marked with $p=$, and contain chords and single notes.

Handwritten musical score for the second system. The top staff is for the flute, marked with a dynamic of $f=$. It contains a long slur over a series of notes. The bottom two staves are for the piano, also marked with $f=$, and contain chords and single notes.

Handwritten musical score for the third system. The top staff is for the flute, marked with a dynamic of ff . It contains a long slur over a series of notes. The bottom two staves are for the piano, also marked with ff , and contain chords and single notes. On the right side, there are performance instructions: $1. + D.C.$, $2. + D.C.$, al , and a circled p .

Handwritten musical score for the fourth system, starting with the tempo marking *Presto*. The top staff is for the flute, marked with a dynamic of ff . It contains a long slur over a series of notes. The bottom two staves are for the piano, also marked with ff , and contain chords and single notes. A circled ff is present in the piano part.

3. Variation

breit

pesante

ff

p f = ff

f

f

f

f

breit

ff

f

f

lento

1
p
pp
f

frei (breit)

rubato (frei)

rit + dim

pp

D.C. al Fine

ff
pp
D.C. al Fine

(frei - rit + dim)

ruhig

pp

pp

pp

Lupe

pp
pp
Lupe

4. Variation

Prestissimo

Handwritten musical notation for the first system of the 4th variation. It consists of two staves: a treble clef staff and a bass clef staff. The treble staff begins with a dynamic marking 'pp=' and a '2' above the staff. The bass staff begins with a circled 'pp' and a '2' above the staff. The music features a melodic line in the treble and a supporting bass line in the bass, with various accidentals and articulation marks.

Handwritten musical notation for the second system of the 4th variation. It consists of two staves: a treble clef staff and a bass clef staff. The treble staff begins with a dynamic marking 'p=' and a '2' above the staff. The bass staff begins with a dynamic marking 'p=' and a '2' above the staff. The music continues with melodic and bass lines, including a circled 'p' in the bass staff.

Handwritten musical notation for the third system of the 4th variation. It consists of two staves: a treble clef staff and a bass clef staff. The treble staff begins with a dynamic marking 'af=' and a '2' above the staff. The bass staff begins with a dynamic marking 'af=' and a '2' above the staff. The music concludes with melodic and bass lines, including a circled 'af' in the bass staff.

Handwritten musical score for the first system. The top staff is for the flute, showing a trill-like figure with a slur and an accent. The middle and bottom staves are for the piano, with chords and a circled **ff** dynamic marking. The system is divided into three measures by vertical bar lines.

Handwritten musical score for the second system. The top staff is for the flute, showing a descending scale with a slur and an accent. The middle and bottom staves are for the piano, with chords and a **dim** dynamic marking. The system is divided into three measures by vertical bar lines.

Handwritten musical score for the third system. The top staff is for the flute, showing a trill-like figure with a slur and an accent. The middle and bottom staves are for the piano, with chords and a circled **p** dynamic marking. The system is divided into four measures by vertical bar lines, ending with a circled treble clef.

Handwritten musical score for the first system. It consists of two staves: a treble clef staff and a bass clef staff. The treble staff contains a melodic line with a circled 'p' dynamic marking at the beginning. The bass staff contains a supporting line with a circled 'p' dynamic marking. The music is written in a key with one sharp (F#) and includes various note values and accidentals.

Handwritten musical score for the second system. It consists of two staves: a treble clef staff and a bass clef staff. The treble staff features a melodic line with a circled 'f=' dynamic marking. The bass staff features a supporting line with a circled 'mp' dynamic marking. The music continues with various note values and accidentals.

Handwritten musical score for the third system. It consists of two staves: a treble clef staff and a bass clef staff. The treble staff contains a melodic line with a circled 'ff' dynamic marking. The bass staff contains a supporting line with a circled 'ff' dynamic marking. The music includes various note values and accidentals.

Handwritten musical score for the first system. It consists of three staves. The top staff is in treble clef and contains a melodic line with notes, slurs, and accents. The middle staff is also in treble clef and contains a few notes and rests. The bottom staff is in bass clef and contains a bass line with notes and slurs. Dynamics include *ff*. Performance markings include slurs, accents, and a circled *ff* in the middle staff.

Handwritten musical score for the second system. It consists of three staves. The top staff is in treble clef and contains a melodic line with notes, slurs, and dynamics like *pp* and *pp*. The middle staff is in treble clef and contains a wavy line representing a tremolo or similar effect. The bottom staff is in bass clef and contains a bass line with notes and slurs. Dynamics include *pp* and *pp*. Performance markings include slurs, accents, and a circled *p* in the top staff.

Handwritten musical score for the third system. It consists of three staves. The top staff is in treble clef and contains a melodic line with notes, slurs, and dynamics like *pp* and *fpp*. The middle staff is in treble clef and contains a wavy line representing a tremolo or similar effect. The bottom staff is in bass clef and contains a bass line with notes and slurs. Dynamics include *pp* and *fpp*. Performance markings include slurs, accents, and a circled *p* in the top staff.

5. Variation

Lento (ruhig schreitend)

frei

sehr breit

lento | *sit - olin*

D.C.
al
FINE

6. Variation

frei rubato

Handwritten musical score for the first system of the 6th variation. It features a flute part with a melodic line and a piano accompaniment. The piano part includes chords and a triplet of eighth notes. The word "rubato" is written below the flute staff.

Handwritten musical score for the second system of the 6th variation. It continues the melodic and harmonic material from the first system. The piano accompaniment features a triplet of eighth notes.

rubato (d)

(p)

Handwritten musical score for the third system of the 6th variation. It shows a flute part with a melodic line and a piano accompaniment. The piano part includes chords and a triplet of eighth notes. The word "rubato" is written above the first measure.

Prestissimo

Handwritten musical score for the first system. The flute part (top staff) begins with a circled '2' and a circled 'P' with 'legg.' written next to it. The piano part (bottom staff) has a circled 'P'. The music consists of four measures with various rhythmic patterns and accidentals.

Handwritten musical score for the second system. The flute part (top staff) has a circled 'f'. The piano part (bottom staff) has a circled 'f'. The music continues with four measures of complex rhythmic and melodic development.

Handwritten musical score for the third system. The flute part (top staff) has a circled 'f'. The piano part (bottom staff) has a circled 'f'. The music continues with four measures, showing increasing complexity in the flute part.

Handwritten musical score for the fourth system. The flute part (top staff) has a circled 'ff'. The piano part (bottom staff) has a circled 'ff'. The music concludes with four measures, featuring a final flourish in the flute part.

Allegro

Handwritten musical notation for the first system, measures 1-4. It consists of three staves: a treble clef staff with a melodic line, and a grand staff (treble and bass clefs) with accompaniment. Dynamics include 'ff' and 'f'.

Handwritten musical notation for the second system, measures 5-8. It consists of three staves. The first staff continues the melodic line with slurs and accents. The grand staff accompaniment includes chords and moving lines. Dynamics include 'ff'.

Handwritten musical notation for the third system, measures 9-12. It consists of three staves. The first staff has a melodic line with slurs and accents. The grand staff accompaniment features block chords. Dynamics include 'f'.

Handwritten musical notation for the fourth system, measures 13-16. It consists of three staves. The first staff has a melodic line with slurs and accents. The grand staff accompaniment includes chords and moving lines. Dynamics include 'ff' and 'f'. The system ends with a double bar line and a fermata.

Thema (alte Melodie) mit
Variationen (im Stile v. Paganini)

Flöte Solo

für Flöte + Streichorchester

①

1959 (Adolf Scherbaum)

Thema

frei -

p

FIN

ff

rit.

D.C.

② Variationen

quasi

f

f

f

f

f

f

f

f

P

Presto

ff

1. + D.C.
2. + D.C.
al

3

pesante

Lento

frei) rubato

> rit + dur

(frei - rit + dur)

ruhig

4

Prestissimo

Handwritten musical score for 'Prestissimo' by Adolf Scherbaum. The score consists of ten staves of music in treble clef with a 1/8 time signature. The music is highly technical, featuring rapid sixteenth-note passages, slurs, and various dynamic markings such as p, f, and ff. The piece concludes with a double bar line and a fermata over the final note.

Handwritten musical notation for the first system. It consists of two staves. The top staff is in treble clef with a 18/8 time signature. It begins with a dynamic marking of *pp* and contains several notes with accents and slurs. The bottom staff also starts with *pp* and features a series of chords and notes, including a circled 'p' at the end. To the right of the second staff, there are handwritten notes: "1. + D.C.", "2. + D.C.", and "al".

Handwritten musical notation for the second system. It features a treble clef and a long, continuous melodic line with many notes, some marked with accents. The notation is dense and spans across the staff.

Handwritten musical notation for the third system. It starts with a treble clef and a 18/8 time signature. It contains a melodic phrase with a slur and a dynamic marking of *pp*.

5

lento (ruhig schreitend)

p

f *(frei)*

letztesil **FIN**

appassionato
rubato

#

(frei)

sehr breit

Lento

ait + diu

D.C. al FIN

6

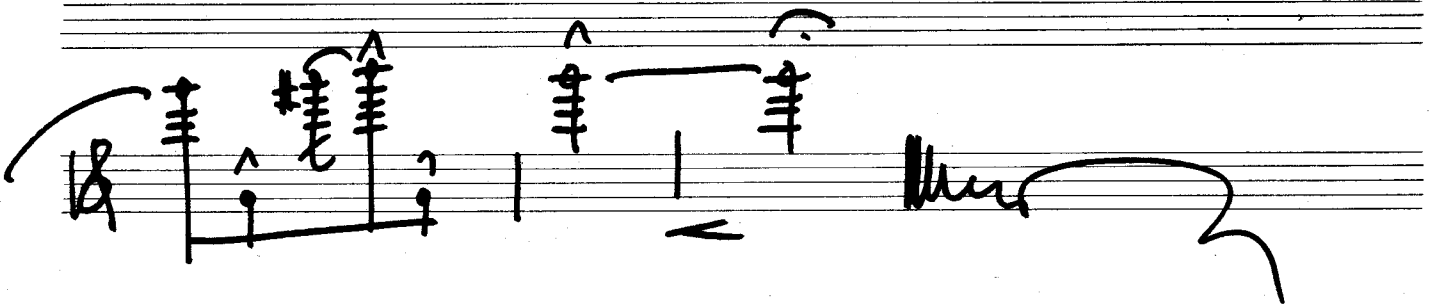
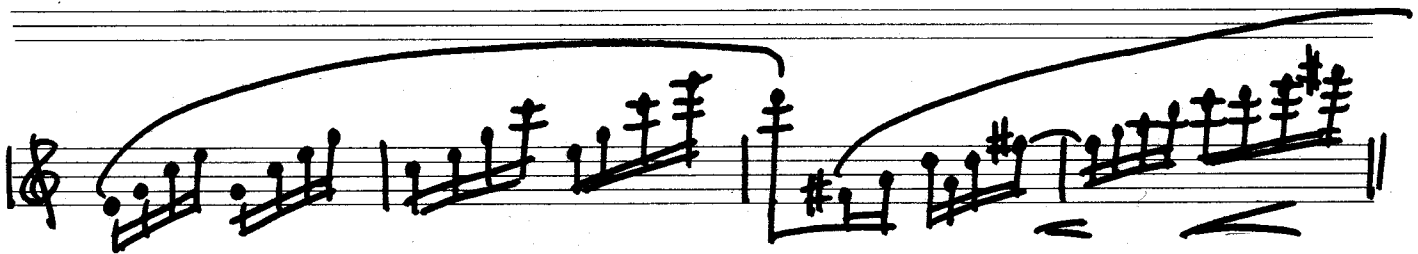
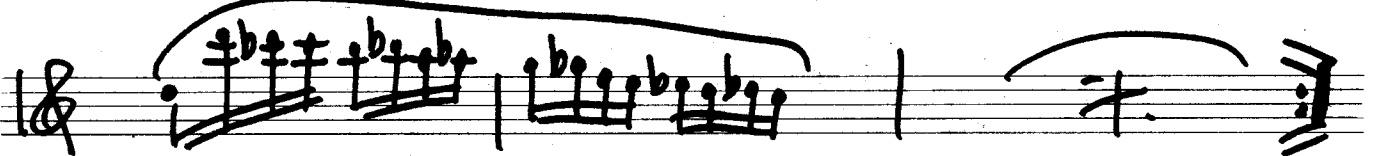
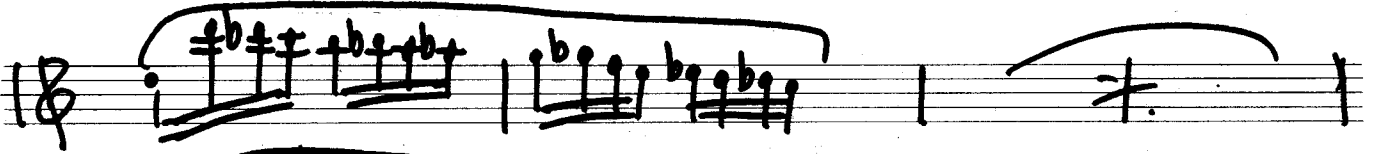
frei rubato

com

rubato (s) rit

Prestissimo

stacc.



Thema (alte Melodie) mit Variationen
(im Stile v. Paganini) für Flöte + Streichen

VIOLINEN

1959

(Adolf Scherbaum)

①

frei

Handwritten musical notation for the first variation, 'frei'. It consists of three staves of music in G major, 2/4 time. The first staff starts with a treble clef, a key signature of one sharp (F#), and a common time signature. The notes are G4, A4, B4, C5, B4, A4, G4. The second staff continues with G4, A4, B4, C5, B4, A4, G4. The third staff ends with a double bar line and 'D.C.' written above it.

2. Variation

rasch

Handwritten musical notation for the second variation, 'rasch'. It consists of seven staves of music in G major, 6/8 time. The first staff starts with a treble clef, a key signature of one sharp (F#), and a 6/8 time signature. The notes are G4, A4, B4, C5, B4, A4, G4. The second staff continues with G4, A4, B4, C5, B4, A4, G4. The third staff ends with a double bar line and a diamond symbol. The fourth staff starts with a treble clef, a key signature of one sharp (F#), and a common time signature. The notes are G4, A4, B4, C5, B4, A4, G4. The fifth staff continues with G4, A4, B4, C5, B4, A4, G4. The sixth staff ends with a double bar line and a diamond symbol. The seventh staff starts with a treble clef, a key signature of one sharp (F#), and a common time signature. The notes are G4, A4, B4, C5, B4, A4, G4.

3

pesante

~ ~ ~ ^

Handwritten musical notation for the first system, consisting of three staves. The first staff begins with a treble clef, a common time signature (C), and a forte dynamic marking (ff). It contains a sequence of eighth notes with various accents and dynamic markings, including $p=f$. The second staff continues the melodic line with similar dynamics. The third staff features a more complex rhythmic pattern with slurs and a final dynamic marking of fff (rit.).

Lento

Handwritten musical notation for the second system, consisting of two staves. The first staff starts with a treble clef and a piano dynamic marking (pp), followed by a series of chords. The second staff contains a few notes and rests, ending with a double bar line and a fermata.

Handwritten musical notation for the third system, consisting of one staff. It begins with a treble clef and a common time signature (C), followed by notes and rests with dynamic markings like pp .

4.

Prestissimo

Handwritten musical score for 'Prestissimo'. The score consists of eight staves. The first staff is in 2/2 time, marked *pp*. The second and third staves are in 2/4 time. The fourth staff has a circled 'P' and a circled '4'. The fifth staff has a circled '1'. The sixth staff has a circled '4' and a circled '4'. The seventh staff has a circled '4' and a circled '4'. The eighth staff has a circled '4' and a circled '4'. The score includes various musical notations such as notes, rests, accidentals, and dynamic markings.

Cento (nuhip)

5

Handwritten musical score for 'Cento (nuhip)'. The score consists of three staves. The first staff is in common time (C), marked *pp*. The second staff ends with a double bar line and the word 'FIN'. The third staff has a circled '4' and a circled '4'. The score includes various musical notations such as notes, rests, accidentals, and dynamic markings.

Lento (rit)

Handwritten musical notation for the first system. It begins with a treble clef and a 3/4 time signature. The first measure contains a whole note chord with a dynamic marking of *ff*. The second measure has a quarter note with a dynamic marking of *ff*. The third measure has a quarter note with a dynamic marking of *p*. The system ends with a double bar line and the instruction "D.C. od Fin".

(6)

Handwritten musical notation for the second system. It starts with a treble clef and the instruction "frei". The first measure has a whole note chord with a dynamic marking of *ff*. The second measure has a whole note chord with a dynamic marking of *ff*. The third measure has a 2/4 time signature and a whole note chord with a dynamic marking of *ff*. The system continues with a series of sixteenth notes and ends with a double bar line.

Handwritten musical notation for the third system. It starts with a treble clef and the instruction "rit". The first measure has a quarter note with a dynamic marking of *ff*. The second measure has a quarter note with a dynamic marking of *ff*. The system ends with a double bar line.

Handwritten musical notation for the fourth system. It starts with a treble clef and the instruction "Prestissimo". The first measure has a quarter note with a dynamic marking of *p*. The system continues with a series of eighth notes and ends with a double bar line.

Handwritten musical notation for the fifth system. It starts with a treble clef and the instruction "ff". The first measure has a quarter note with a dynamic marking of *ff*. The system continues with a series of eighth notes and ends with a double bar line.

Handwritten musical notation for the sixth system. It starts with a treble clef and a double bar line. The system continues with a series of eighth notes and ends with a double bar line.

Handwritten musical notation for the seventh system. It starts with a treble clef and a double bar line. The system continues with a series of eighth notes and ends with a double bar line.

Handwritten musical notation for the eighth system. It starts with a treble clef and a double bar line. The system continues with a series of eighth notes and ends with a double bar line.

Handwritten musical notation for the ninth system. It starts with a treble clef and a double bar line. The system continues with a series of eighth notes and ends with a double bar line.

Thema (alte Melodie) mit Variationen
(im Stile v. Paganini) für Flöte + Streichen

Bratschen

1959

(H. Scherbaum)

①

frei

①

p *ff* *FIN* *D.C.*

② Variationen

randu

f *ff* *p* *ff* *1. + D.C.* *2. + D.C.*

Presto

ff

pesante

3.

Handwritten musical score for the 'pesante' section, measures 1-10. The notation is on a single staff with a treble clef and a common time signature. It features various dynamics including *ff*, *p*, *f*, and *pp*, along with accents and slurs. A *rit.* marking is present in measure 5, and a *lento* marking is in measure 6. The section concludes with a double bar line and a *d.c.* marking.

④

Prestissimo

Handwritten musical score for the 'Prestissimo' section, measures 11-20. The notation is on a single staff with a treble clef and a common time signature. It features various dynamics including *pp*, *f*, and *ff*, along with accents and slurs. The section concludes with a double bar line and a *d.c.* marking. There are also some handwritten notes on the right side: "1. + d.c." and "2. + d.c.".

5.

Lento (ruhig)

B C pp $\underline{q.}$ $\underline{q.}$ | $\underline{d.}$ $\underline{d.}$ | $\underline{d.}$ $\underline{d.}$ | $\underline{q.}$ $\underline{q.}$ | $\underline{d.}$ $\underline{d.}$ |

B \underline{i} $\underline{d.}$ | $\underline{d.}$ | $\underline{q.}$ **FINE**

B \underline{f} $\underline{q.}$ $\hat{d.}$ $\hat{d.}$ | $\underline{q.}$ $\hat{d.}$ $\hat{d.}$ | \underline{f} $\hat{d.}$ | \underline{f} |

B \underline{f} | **Lento** | \underline{f} $\hat{d.}$ | $\underline{d.}$ | $\underline{d.}$ | $\underline{d.}$ | **D.C. al FINE**

6.

B **frei** \underline{f} $\underline{8}$ | $\underline{\#B}$ | **rubato** $\underline{2}$ $\underline{4}$ \underline{f} $\underline{d.}$ $\underline{d.}$ | $\underline{d.}$ $\underline{d.}$ | $\underline{d.}$ $\underline{d.}$ | $\underline{d.}$ $\underline{d.}$ |

B $\underline{2}$ $\underline{4}$ **Prehissimo** \underline{pp} \underline{f} \underline{f} | \underline{f} | \underline{f} | \underline{f} | \underline{f} | \underline{f} | \underline{f} | \underline{f} | \underline{f} |

B \underline{f} \underline{f} | \underline{f} | \underline{f} | \underline{f} | \underline{f} | \underline{f} | \underline{f} | \underline{f} | \underline{f} |

B \underline{f} \underline{f} | \underline{f} | \underline{f} | \underline{f} | \underline{f} | \underline{f} | \underline{f} | \underline{f} |

B \underline{f} | \underline{f} $\hat{d.}$ $\hat{d.}$ | \underline{f} $\hat{d.}$ $\hat{d.}$ | \underline{f} $\hat{d.}$ $\hat{d.}$ | \underline{f} $\hat{d.}$ $\hat{d.}$ | \underline{f} $\hat{d.}$ $\hat{d.}$ | \underline{f} $\hat{d.}$ $\hat{d.}$ | \underline{f} |

Handwritten musical notation on two staves. The first staff contains a sequence of notes with accents and a repeat sign. The second staff continues the sequence with a sharp sign and a fermata.

Thema (alte Melodie) mit Variationen
(im Stile v. Paganini)

Celli + Bässe

①. für Flöte + Streichorchester 1958

(A. Scherbaum)

frei

Handwritten musical notation for the first variation, "frei". It consists of two staves. The first staff is in G major, 2/4 time, with notes G4, A4, B4, A4, G4, F4, E4, D4. The second staff is in G major, 2/4 time, with notes G4, A4, B4, A4, G4, F4, E4, D4. Dynamics include p, ff, and p. There are also markings for "FINE" and "D.C. al FIN."

2. Variationen

rasch

Handwritten musical notation for the second variation, "rasch". It consists of five staves. The first staff is in G major, 6/8 time, with notes G4, A4, B4, A4, G4, F4, E4, D4. The second staff is in G major, 6/8 time, with notes G4, A4, B4, A4, G4, F4, E4, D4. The third staff is in G major, 6/8 time, with notes G4, A4, B4, A4, G4, F4, E4, D4. The fourth staff is in G major, 6/8 time, with notes G4, A4, B4, A4, G4, F4, E4, D4. The fifth staff is in G major, 6/8 time, with notes G4, A4, B4, A4, G4, F4, E4, D4. Dynamics include f, ff, and p. There are also markings for "1. x D.C." and "2. x D.C. al".

Presto

Handwritten musical notation for the third variation, "Presto". It consists of one staff in G major, 2/4 time, with notes G4, A4, B4, A4, G4, F4, E4, D4. Dynamics include ff. There are also markings for "1" and "2".

pesante 3.

Handwritten musical notation for the first system, featuring a treble clef and common time signature. The notation includes notes with accents and dynamic markings such as *ff*, *p*, *f*, and *ff*. A slur covers the final two notes of the first line.

Handwritten musical notation for the second system, starting with the tempo marking *lento*. It features a treble clef and a key signature of one sharp (F#). The notation includes notes with accents and dynamic markings like *pc* and *f*.

Handwritten musical notation for the third system, including a treble clef and dynamic markings such as *ff* and *pp*. The system concludes with the instruction *D.C. al FIN.* and a double bar line.

4

Handwritten musical notation for the fourth system, starting with the tempo marking *Prestissimo* and a 2/2 time signature. The notation includes notes with accents and dynamic markings like *pp*, *f*, and *ff*. The system ends with a double bar line and a fermata.

6.

frei / rubato *rubato*

Handwritten musical notation for the first section, featuring a treble clef, a key signature of one sharp (F#), and a 2/4 time signature. The notation includes various note values, rests, and dynamic markings such as 'mf' and 'p'.

Prestissimo

Handwritten musical notation for the second section, featuring a treble clef, a key signature of one sharp (F#), and a 2/4 time signature. The notation is highly rhythmic, with many sixteenth and thirty-second notes, and includes dynamic markings like 'p', 'ff', and 'f'.