

Übungen im
alten Stil

Wien 1959

Adolf Scherbaum
Klavier (oder Cembalo)
(Orgel)

ruhig

Handwritten musical notation for the first system, featuring a treble clef, a key signature of one sharp (F#), and a 4/4 time signature. The notation includes a melodic line with eighth and sixteenth notes, accented, and a fermata over the final measure. The bass line consists of quarter notes and a fermata over the final measure. A large slur covers both staves.

Handwritten musical notation for the second system, featuring a treble clef, a key signature of one sharp (F#), and a 4/4 time signature. The notation includes a melodic line with eighth and sixteenth notes, accented, and a fermata over the final measure. The bass line consists of quarter notes and a fermata over the final measure. A large slur covers both staves.

Handwritten musical notation for the third system, featuring a treble clef, a key signature of one sharp (F#), and a 4/4 time signature. The notation includes a melodic line with eighth and sixteenth notes, accented, and a fermata over the final measure. The bass line consists of quarter notes and a fermata over the final measure. A large slur covers both staves.

Allegro

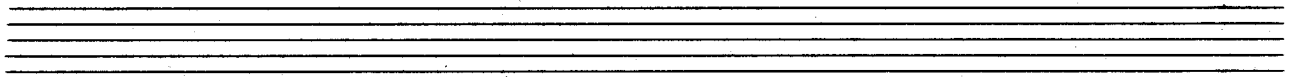
3x

Handwritten musical notation for the first system, featuring a treble and bass clef, a 4/4 time signature, and a key signature of one sharp (F#). The melody consists of eighth notes with slurs and accents, while the bass line has quarter notes. A large slur covers the entire system.

Handwritten musical notation for the second system, continuing the piece with similar notation and a slur over the first two measures.

Handwritten musical notation for the third system, continuing the piece with similar notation and slurs over each measure.

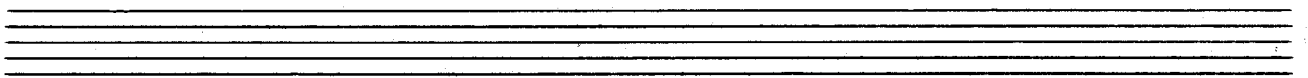
Handwritten musical notation for the first system, featuring a treble and bass staff with a melodic line and accompaniment.



Handwritten musical notation for the second system, featuring a treble and bass staff with a melodic line and accompaniment.



Handwritten musical notation for the third system, featuring a treble and bass staff with a melodic line and accompaniment.

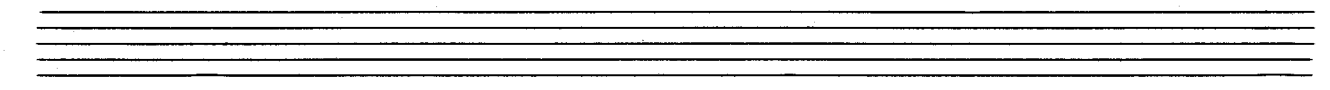


Handwritten musical notation for the fourth system, featuring a treble and bass staff with a melodic line and accompaniment, ending with a fermata. The notation includes a triplet of eighth notes in the treble staff and a fermata over the final note.

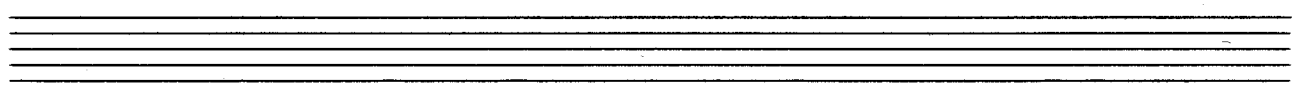
leichte + ex. rit.

Allegro (arg) 6

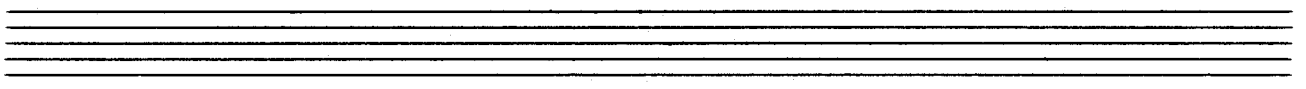
2x



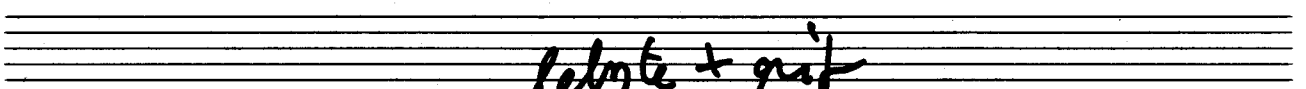
Handwritten musical notation on two staves. The upper staff contains three measures of sixteenth-note chords, with the second measure featuring a key signature change to two flats. The lower staff contains a corresponding bass line with quarter notes and eighth-note patterns.



Handwritten musical notation on two staves. The upper staff continues with sixteenth-note chords, including a key signature change to one flat. The lower staff features a more active bass line with eighth-note patterns.



Handwritten musical notation on two staves. The upper staff shows sixteenth-note chords with a key signature change to one sharp. The lower staff includes a bass line with eighth-note patterns and a key signature change to one sharp.



lebste + gut

Handwritten musical notation on two staves. The upper staff concludes with sixteenth-note chords and a fermata. The lower staff has a bass line with quarter notes and a fermata. A large diagonal slash is drawn across the bottom right of the system.

prest

Handwritten musical notation for the first system. The top staff is in treble clef with a 4/4 time signature. It contains two measures of music, each starting with a '77' marking and a fermata over a dotted half note. The notes are G4, A4, and B4, with a sharp sign above the first measure. The bottom staff is in bass clef and contains two measures of music, each starting with a '77' marking and a fermata over a dotted half note. The notes are G3, A3, and B3, with a sharp sign above the first measure.

Handwritten musical notation for the second system. The top staff is in treble clef with a 4/4 time signature. It contains three measures of music, each starting with a '77' marking and a fermata over a dotted half note. The notes are G4, A4, and B4, with a sharp sign above the first measure. The bottom staff is in bass clef and contains three measures of music, each starting with a '77' marking and a fermata over a dotted half note. The notes are G3, A3, and B3, with a sharp sign above the first measure.

Handwritten musical notation for the third system. The top staff is in treble clef with a 4/4 time signature. It contains two measures of music, each starting with a '77' marking and a fermata over a dotted half note. The notes are G4, A4, and B4, with a sharp sign above the first measure. The bottom staff is in bass clef and contains two measures of music, each starting with a '77' marking and a fermata over a dotted half note. The notes are G3, A3, and B3, with a sharp sign above the first measure.

Fin

ruhig

Handwritten musical notation for the first system, featuring a treble and bass clef, a key signature of one sharp (F#), and a dynamic marking of 'p'. The melody is written in the treble clef with eighth notes and a slur, while the bass clef provides a harmonic accompaniment with chords and single notes.

Handwritten musical notation for the second system, continuing the piece with similar notation and phrasing.

Handwritten musical notation for the third system, showing further development of the melodic and harmonic lines.

Handwritten musical notation for the fourth system, concluding the piece with a final cadence.

Handwritten musical notation for the first system, featuring a treble and bass staff. The treble staff contains a melodic line with a slur and a fermata over the first measure. The bass staff contains a bass line with quarter notes.

Two empty musical staves.

Handwritten musical notation for the second system, featuring a treble and bass staff. The treble staff contains a melodic line with a slur and a fermata over the first measure. The bass staff contains a bass line with quarter notes.

(letz(e) + rit)

Two empty musical staves.

FIN

Handwritten musical notation for the third system, featuring a treble and bass staff. The treble staff contains a melodic line with a slur and a fermata over the first measure. The bass staff contains a bass line with quarter notes.

Handwritten musical notation for the fourth system, featuring a treble and bass staff. The treble staff contains a melodic line with a slur and a fermata over the first measure. The bass staff contains a bass line with quarter notes.

Handwritten musical notation for the fifth system, featuring a treble and bass staff. The treble staff contains a melodic line with a slur and a fermata over the first measure. The bass staff contains a bass line with quarter notes.

D. C.
al Fine

Allegro

3*

Handwritten musical notation for the first system. It consists of two staves: a treble clef staff and a bass clef staff. The treble staff begins with a treble clef, a 3/4 time signature, and a dynamic marking of *mf*. The first measure contains a quarter rest followed by a slur over four eighth notes (G4, A4, B4, C5). The second measure contains a quarter rest followed by a slur over four eighth notes (D5, E5, F5, G5). The third measure contains a quarter rest followed by a slur over four eighth notes (G5, F5, E5, D5). The fourth measure contains a quarter rest followed by a slur over four eighth notes (C5, B4, A4, G4). The bass staff contains a whole rest in the first measure, followed by a slur over four eighth notes (G3, F3, E3, D3) in the second measure, and a quarter rest followed by a slur over four eighth notes (C3, B2, A2, G2) in the third measure. The system ends with a double bar line.

Handwritten musical notation for the second system. It consists of two staves: a treble clef staff and a bass clef staff. The treble staff begins with a treble clef. The first measure contains a quarter rest followed by a slur over four eighth notes (G4, A4, B4, C5). The second measure contains a quarter rest followed by a slur over four eighth notes (D5, E5, F5, G5). The third measure contains a quarter rest followed by a slur over four eighth notes (G5, F5, E5, D5). The fourth measure contains a quarter rest followed by a slur over four eighth notes (C5, B4, A4, G4). The bass staff contains a whole rest in the first measure, followed by a slur over four eighth notes (G3, F3, E3, D3) in the second measure, and a quarter rest followed by a slur over four eighth notes (C3, B2, A2, G2) in the third measure. The system ends with a double bar line.

Handwritten musical notation for the third system. It consists of two staves: a treble clef staff and a bass clef staff. The treble staff begins with a treble clef. The first measure contains a quarter rest followed by a slur over four eighth notes (G4, A4, B4, C5). The second measure contains a quarter rest followed by a slur over four eighth notes (D5, E5, F5, G5). The third measure contains a quarter rest followed by a slur over four eighth notes (G5, F5, E5, D5). The fourth measure contains a quarter rest followed by a slur over four eighth notes (C5, B4, A4, G4). The bass staff contains a whole rest in the first measure, followed by a slur over four eighth notes (G3, F3, E3, D3) in the second measure, and a quarter rest followed by a slur over four eighth notes (C3, B2, A2, G2) in the third measure. The system ends with a double bar line.

Handwritten musical notation for the fourth system. It consists of two staves: a treble clef staff and a bass clef staff. The treble staff begins with a treble clef. The first measure contains a quarter rest followed by a slur over four eighth notes (G4, A4, B4, C5). The second measure contains a quarter rest followed by a slur over four eighth notes (D5, E5, F5, G5). The third measure contains a quarter rest followed by a slur over four eighth notes (G5, F5, E5, D5). The fourth measure contains a quarter rest followed by a slur over four eighth notes (C5, B4, A4, G4). The bass staff contains a whole rest in the first measure, followed by a slur over four eighth notes (G3, F3, E3, D3) in the second measure, and a quarter rest followed by a slur over four eighth notes (C3, B2, A2, G2) in the third measure. The system ends with a double bar line.

Handwritten musical notation for the first system, featuring treble and bass staves with notes, rests, and slurs.

Handwritten musical notation for the second system, including the handwritten instruction "lebhaft + gut" and the word "FIN".

Handwritten musical notation for the third system, showing treble and bass staves with notes and slurs.

Handwritten musical notation for the fourth system, including the handwritten instruction "al. G. Fine".

Andante (6/8)

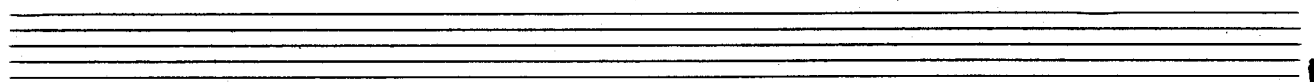
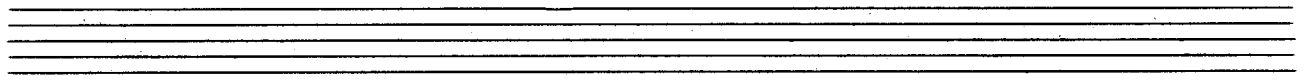
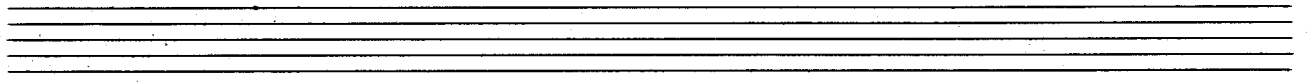
Handwritten musical notation for the first system of 'Andante (6/8)'. It consists of a treble clef staff and a bass clef staff. The treble staff contains three measures of music with chords and slurs. The bass staff contains rhythmic notation with stems and flags, and a circled '10' in the first measure. The key signature has one sharp (F#) and the time signature is 6/8.

Handwritten musical notation for the second system of 'Andante (6/8)'. It consists of a treble clef staff and a bass clef staff. The treble staff contains three measures of music with chords and slurs. The bass staff contains rhythmic notation with stems and flags.

Handwritten musical notation for the third system of 'Andante (6/8)'. It consists of a treble clef staff and a bass clef staff. The treble staff contains four measures of music with chords, slurs, and plus signs above some notes. The bass staff contains rhythmic notation with stems and flags, and a circled '10' in the first measure. The key signature changes from one sharp to one flat (Bb) in the second measure.

letzter + mit FIN

Handwritten musical notation for the fourth system of 'Andante (6/8)'. It consists of a treble clef staff and a bass clef staff. The treble staff contains three measures of music with chords, slurs, and plus signs above some notes. The bass staff contains rhythmic notation with stems and flags. The key signature changes from one flat to one sharp (F#) in the second measure. The system ends with a double bar line and a fermata over the final note.



D. C.
al
F.

Allegro Moderato

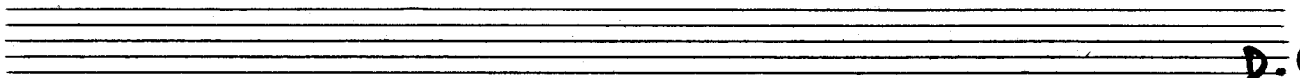
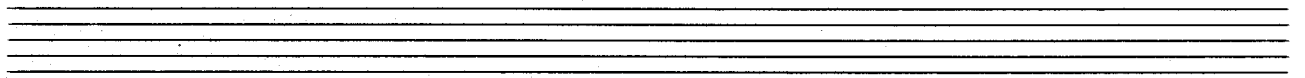
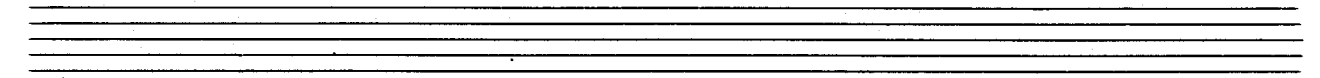
3x

Handwritten musical notation for the first system. The treble clef staff begins with a treble clef, a 4/4 time signature, and a key signature of one sharp (F#). The first measure contains a quarter note G4, followed by a quarter rest, and then a quarter note A4. The second measure contains a quarter note B4, a quarter note C5, and a quarter note D5. The third measure contains a quarter note E5, a quarter note F#5, and a quarter note G5. The fourth measure contains a quarter note A5, a quarter note B5, and a quarter note C6. The bass clef staff begins with a bass clef, a 4/4 time signature, and a key signature of one sharp (F#). The first measure contains a whole rest, followed by a whole note F#3. The second measure contains a whole note G3. The third measure contains a whole note A3. The fourth measure contains a whole note B3. The system ends with a double bar line.

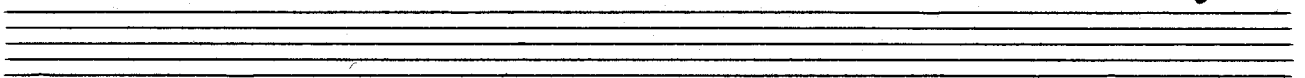
Handwritten musical notation for the second system. The treble clef staff begins with a treble clef, a 4/4 time signature, and a key signature of one sharp (F#). The first measure contains a quarter note G4, followed by a quarter note A4, and a quarter note B4. The second measure contains a quarter note C5, a quarter note D5, and a quarter note E5. The third measure contains a quarter note F#5, a quarter note G5, and a quarter note A5. The fourth measure contains a quarter note B5, a quarter note C6, and a quarter note D6. The bass clef staff begins with a bass clef, a 4/4 time signature, and a key signature of one sharp (F#). The first measure contains a quarter note F#3, a quarter note G3, and a quarter note A3. The second measure contains a quarter note B3, a quarter note C4, and a quarter note D4. The third measure contains a quarter note E4, a quarter note F#4, and a quarter note G4. The fourth measure contains a quarter note A4, a quarter note B4, and a quarter note C5. The system ends with a double bar line.

Handwritten musical notation for the third system. The treble clef staff begins with a treble clef, a 4/4 time signature, and a key signature of one sharp (F#). The first measure contains a quarter note G4, followed by a quarter note A4, and a quarter note B4. The second measure contains a quarter note C5, a quarter note D5, and a quarter note E5. The third measure contains a quarter note F#5, a quarter note G5, and a quarter note A5. The fourth measure contains a quarter note B5, a quarter note C6, and a quarter note D6. The bass clef staff begins with a bass clef, a 4/4 time signature, and a key signature of one sharp (F#). The first measure contains a quarter note F#3, a quarter note G3, and a quarter note A3. The second measure contains a quarter note B3, a quarter note C4, and a quarter note D4. The third measure contains a quarter note E4, a quarter note F#4, and a quarter note G4. The fourth measure contains a quarter note A4, a quarter note B4, and a quarter note C5. The system ends with a double bar line.

Handwritten musical notation for the fourth system. The treble clef staff begins with a treble clef, a 4/4 time signature, and a key signature of one sharp (F#). The first measure contains a quarter note G4, followed by a quarter note A4, and a quarter note B4. The second measure contains a quarter note C5, a quarter note D5, and a quarter note E5. The third measure contains a quarter note F#5, a quarter note G5, and a quarter note A5. The fourth measure contains a quarter note B5, a quarter note C6, and a quarter note D6. The bass clef staff begins with a bass clef, a 4/4 time signature, and a key signature of one sharp (F#). The first measure contains a whole note F#3. The second measure contains a whole note G3. The third measure contains a whole note A3. The fourth measure contains a whole note B3. The system ends with a double bar line. Above the treble staff, the handwritten text "letzter + gut" is written. To the right of the system, the word "Ein" is written.



D.C.
al
Fine



Adagio

anf. 4(8)

Handwritten musical notation for the first system. It consists of a treble clef staff and a bass clef staff. The key signature has one flat (B-flat). The time signature is 4/8. The treble staff contains a melodic line with slurs and a fermata. The bass staff contains a bass line with a forte (ff) dynamic marking.

Handwritten musical notation for the second system. It continues the melodic and bass lines from the first system. The treble staff has a slur over the first two measures and a fermata. The bass staff has a slur over the first two measures.

Handwritten musical notation for the third system. It shows further development of the musical themes. The treble staff has a slur over the first two measures and a fermata. The bass staff has a slur over the first two measures.

letztes + gew. rit.

Handwritten musical notation for the final system. It ends with a fermata and the word "FIN.". The treble staff has a slur over the first two measures and a fermata. The bass staff has a slur over the first two measures.

Allegretto

Handwritten musical notation for the first system. It features a treble clef and a bass clef. The time signature is 4/8. A circled '1' is present. The music consists of two staves. The first measure has a whole note chord with a sharp sign. The second measure has a whole note chord with a sharp sign. A large slur covers the first two measures.

Handwritten musical notation for the second system. It features a treble clef and a bass clef. The music consists of two staves. The first measure has a whole note chord with a sharp sign. The second measure has a whole note chord with a sharp sign. A large slur covers the first two measures.

Handwritten musical notation for the third system. It features a treble clef and a bass clef. The music consists of two staves. The first measure has a whole note chord with a sharp sign. The second measure has a whole note chord with a sharp sign. A large slur covers the first two measures.

Handwritten musical notation for the fourth system. It features a treble clef and a bass clef. The music consists of two staves. The first measure has a whole note chord with a sharp sign. The second measure has a whole note chord with a sharp sign. A large slur covers the first two measures.

Handwritten musical notation for the first system, featuring a treble and bass staff. The treble staff contains a melodic line with a slur and a sharp sign. The bass staff contains a bass line with triplets and a sharp sign.

Handwritten musical notation for the second system, continuing the melodic and bass lines from the first system.

Handwritten musical notation for the third system, showing further development of the musical ideas.

Handwritten musical notation for the fourth system, including a circled "FIN" marking. The notation continues with triplets and a sharp sign.

Handwritten musical notation for the fifth system, concluding the main melodic phrase.

Handwritten musical notation for the sixth system, ending with a double bar line and the text "D.C. al Fine".

Allegro

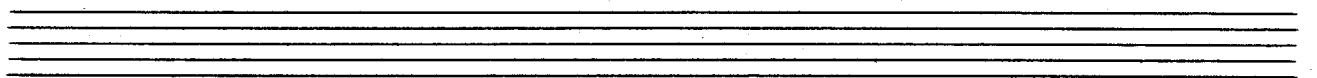
Handwritten musical notation for the first system, measures 1-4. The music is in 3/8 time, with a treble clef and a common time signature of 8. The melody consists of eighth-note patterns, and the bass line features quarter notes.

Handwritten musical notation for the second system, measures 5-8. The melody continues with eighth-note patterns, and the bass line features quarter notes.

Handwritten musical notation for the third system, measures 9-12. The melody continues with eighth-note patterns, and the bass line features quarter notes. A double bar line is present at the end of measure 10.

Handwritten musical notation for the fourth system, measures 13-16. The melody continues with eighth-note patterns, and the bass line features quarter notes. The key signature changes to one sharp (F#).

Handwritten musical notation for the fifth system, measures 17-20. The melody continues with eighth-note patterns, and the bass line features quarter notes. The key signature remains one sharp (F#).



letzte + nur.

Prests

3x

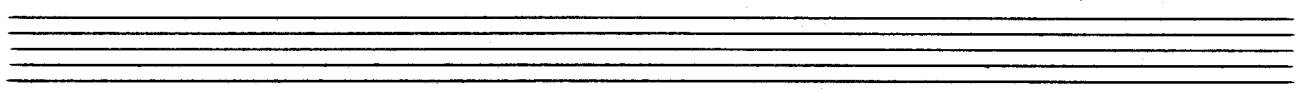
Handwritten musical notation for the first system, measures 1-4. The top staff is in treble clef with a key signature of one sharp (F#). It contains three measures of chords, each with a sharp sign (#) above the notes. The bottom staff is in bass clef and contains four measures of eighth-note patterns.

Handwritten musical notation for the second system, measures 5-8. The top staff continues with three measures of chords. The bottom staff continues with four measures of eighth-note patterns, including a sharp sign (#) in the second measure.

Handwritten musical notation for the third system, measures 9-12. The top staff contains four measures of chords. The bottom staff contains five measures of eighth-note patterns.

Handwritten musical notation for the fourth system, measures 13-16. The top staff contains three measures of chords. The bottom staff contains four measures of eighth-note patterns.

Handwritten musical notation for the fifth system, measures 17-20. The top staff contains three measures of chords. The bottom staff contains three measures of eighth-note patterns.



The image shows a handwritten musical score for guitar, consisting of five systems of two staves each. The notation is dense and includes various chords and melodic lines. The first system starts with a treble clef and a key signature of one sharp (F#). The second system has a treble clef and a key signature of one sharp. The third system has a treble clef and a key signature of one sharp. The fourth system has a treble clef and a key signature of one sharp. The fifth system has a treble clef and a key signature of one sharp. The notation includes many chords, some with accidentals, and some with articulation marks like accents and slurs. The score is written in black ink on white paper.

breit (passionato)

3/8 ⊕

Fin

al Fine