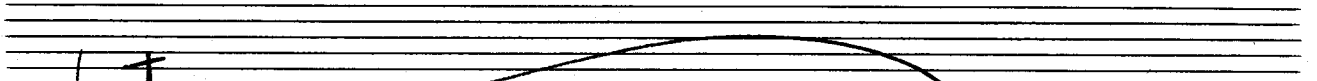
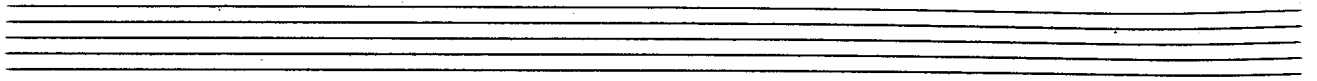


Übungen im alten
Stil für Orgel
Wien 1959

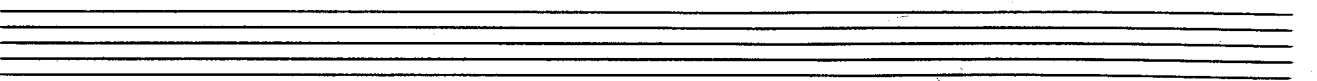
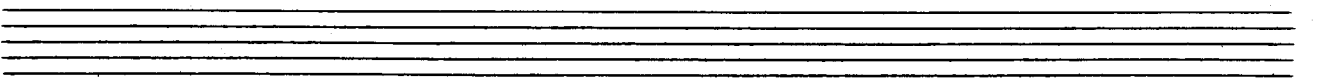
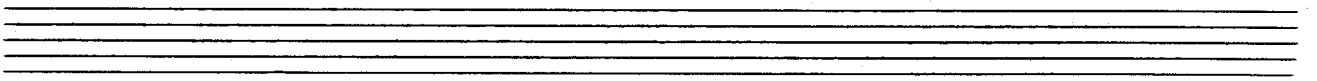
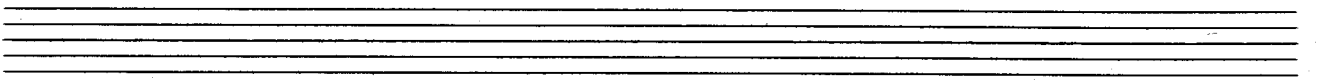
Notenheft

Stücke im alten Stil

für Orgel 1959



lento



Zit + ev. rit.

tento

Handwritten musical notation for the first system. It features a treble and bass clef, a 4/4 time signature, and a circled 'p' dynamic marking. The music consists of several measures with various note values and rests.

Handwritten musical notation for the second system, showing a treble and bass clef with various note values and rests.

Handwritten musical notation for the third system, featuring a treble and bass clef with various note values and rests.

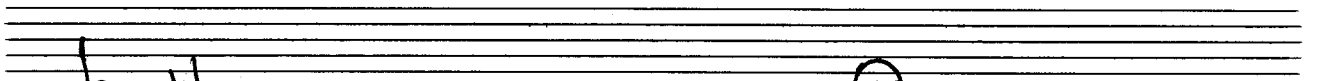
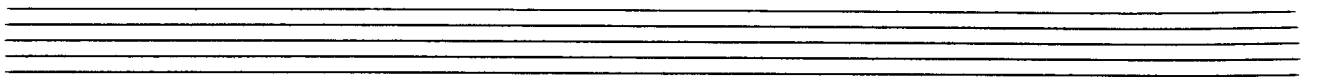
Handwritten musical notation for the fourth system, showing a treble and bass clef with various note values and rests.

Handwritten musical notation for the first system, featuring two staves with treble and bass clefs. The music includes various note values, accidentals, and slurs.

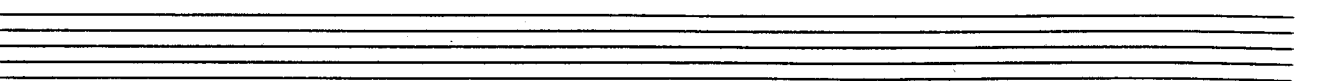
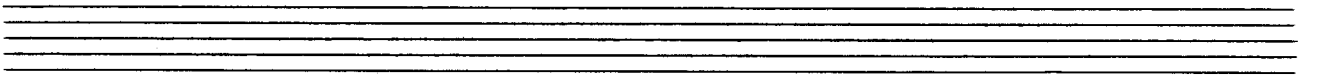
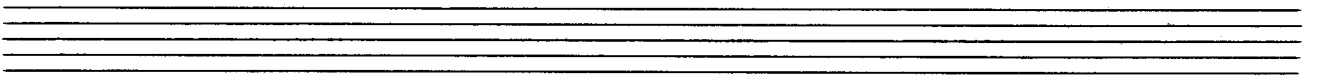
Handwritten musical notation for the second system, including a double bar line and the handwritten instruction "poco rit" below the staff.

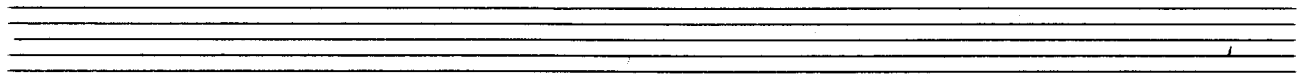
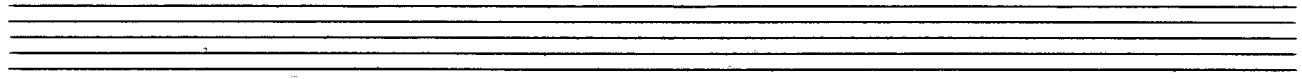
Handwritten musical notation for the third system, showing complex rhythmic patterns and slurs.

Handwritten musical notation for the fourth system, ending with a double bar line and the handwritten instruction "D.C." above the staff.



breit

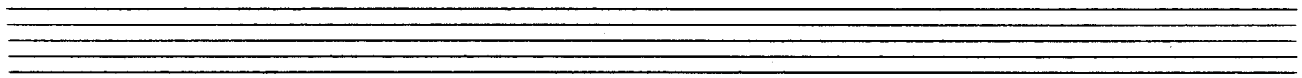




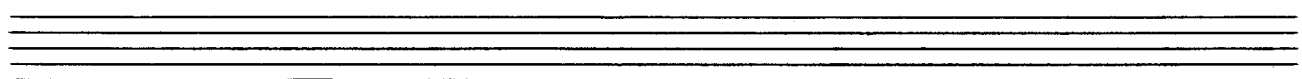
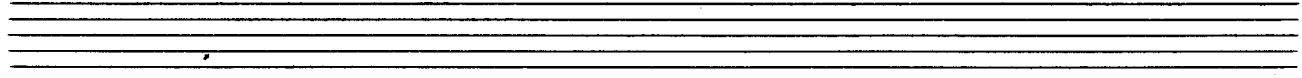
Handwritten musical notation on two staves. The upper staff is in treble clef with a key signature of one sharp (F#). It contains a melodic line with a slur over the first two measures and a fermata over the final measure. The lower staff is in bass clef and contains a bass line with a slur over the first two measures and a fermata over the final measure.



Handwritten musical notation on two staves. The upper staff is in treble clef with a key signature of one sharp (F#). It contains a melodic line with a slur over the first two measures, a flat (b) symbol above the third measure, and a fermata over the final measure. The lower staff is in bass clef and contains a bass line with a slur over the first two measures and a fermata over the final measure.



Handwritten musical notation on two staves. The upper staff is in treble clef with a key signature of one sharp (F#). It contains a melodic line with a slur over the first two measures, a fermata over the final measure, and a flourish symbol above the final measure. The lower staff is in bass clef and contains a bass line with a slur over the first two measures and a fermata over the final measure. To the right of the staves, the text "D.C. al Fine" is written vertically.



Osterlied (1631)

schlicht

(2x lento) rit.

frei

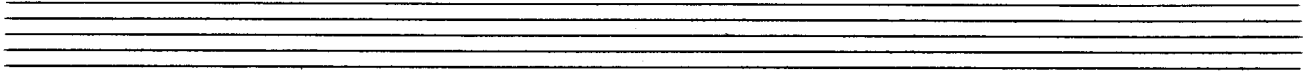
Handwritten musical score for the first system. The treble staff contains a melodic line with a slur over the first two measures and a fermata over the last measure. The bass staff contains a chordal accompaniment. The notation is in a common time signature.

Handwritten musical score for the second system. The treble staff continues the melodic line with a slur and a fermata. The bass staff continues the chordal accompaniment.

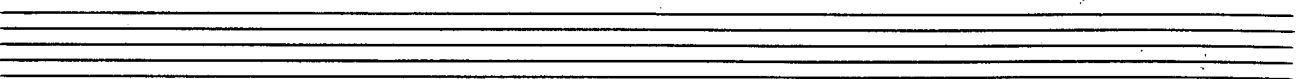
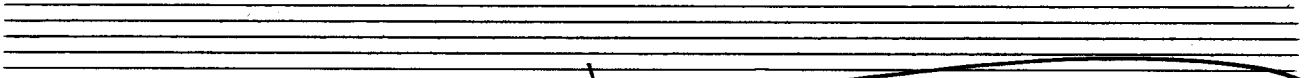
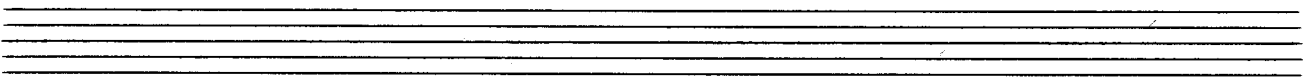
Handwritten musical score for the third system. The treble staff continues the melodic line with a slur and a fermata. The bass staff continues the chordal accompaniment.

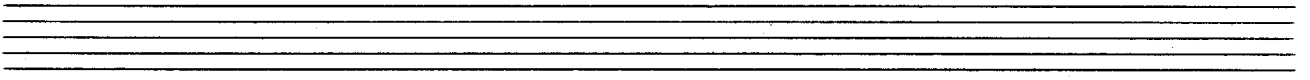
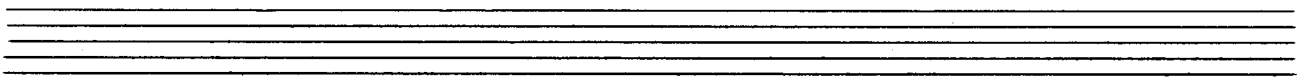
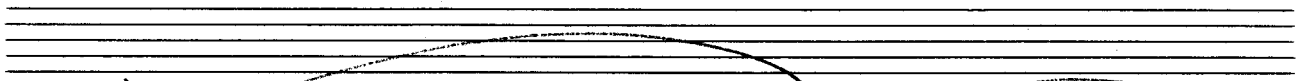
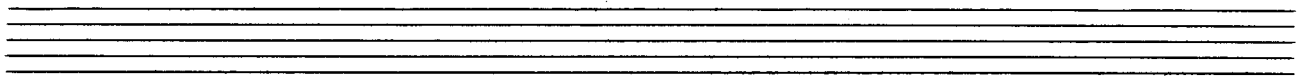
frei

Handwritten musical score for the fourth system. The treble staff features a melodic line with a slur and a fermata. The bass staff contains a chordal accompaniment. The notation includes a final cadence.



bweit (aber nicht schleppen) Achtel





Übung (a) b6

Handwritten musical score for the first system. The treble clef staff contains a melodic line with notes and accidentals (sharps, flats, naturals) and a fermata. The bass clef staff contains a bass line with notes and accidentals. The system is divided into two measures by a vertical bar line.

Handwritten musical score for the second system. The treble clef staff continues the melodic line with notes and accidentals. The bass clef staff continues the bass line. The system is divided into two measures by a vertical bar line.

Handwritten musical score for the third system. The treble clef staff features more complex rhythmic patterns with notes and accidentals. The bass clef staff continues the bass line. The system is divided into two measures by a vertical bar line.

Handwritten musical score for the fourth system. The treble clef staff concludes the melodic line. The bass clef staff concludes the bass line. The system ends with a double bar line and performance instructions: *2. x*, *D.C.*, *al*, and *Fine*.

gambler

Handwritten musical notation for the first system of 'gambler'. It features a treble clef, a key signature of one sharp (F#), and a 3/4 time signature. The music is written on a single staff with a grand staff bracket. The first measure contains a whole note chord with notes G4, A4, B4, and C5. The second measure contains a half note chord with notes G4, A4, B4, and C5. The third measure contains a half note chord with notes G4, A4, B4, and C5. The fourth measure contains a half note chord with notes G4, A4, B4, and C5.

Handwritten musical notation for the second system of 'gambler'. It features a treble clef, a key signature of one sharp (F#), and a 3/4 time signature. The music is written on a single staff with a grand staff bracket. The first measure contains a half note chord with notes G4, A4, B4, and C5. The second measure contains a half note chord with notes G4, A4, B4, and C5. The third measure contains a half note chord with notes G4, A4, B4, and C5. The fourth measure contains a half note chord with notes G4, A4, B4, and C5.

Handwritten musical notation for the third system of 'gambler'. It features a treble clef, a key signature of one sharp (F#), and a 3/4 time signature. The music is written on a single staff with a grand staff bracket. The first measure contains a half note chord with notes G4, A4, B4, and C5. The second measure contains a half note chord with notes G4, A4, B4, and C5. The third measure contains a half note chord with notes G4, A4, B4, and C5. The fourth measure contains a half note chord with notes G4, A4, B4, and C5.

Handwritten musical notation for the first system, featuring a treble and bass staff with notes and chords.

Handwritten musical notation for the second system, featuring a treble and bass staff with notes and chords.

Handwritten musical notation for the third system, including the handwritten note "letzte mit FINE" and a double bar line.

Handwritten musical notation for the fourth system, featuring a treble and bass staff with notes and chords.

Sehr ruhig

Handwritten musical notation for the first system. It consists of two staves: a treble clef staff and a bass clef staff. The time signature is 3/8. The treble staff contains a melodic line with a slur over four measures and a fermata over the final note. The bass staff contains a simple accompaniment with quarter notes and rests.

Handwritten musical notation for the second system. It continues the melodic line from the first system in the treble staff and the accompaniment in the bass staff. The melodic line features a slur and a fermata over the final note.

Handwritten musical notation for the third system. The treble staff begins with a key signature change to one flat (B-flat) and a fermata over the first note. The melodic line continues with a slur and a fermata over the final note. The bass staff continues the accompaniment.

Handwritten musical notation for the fourth system. The treble staff concludes the melodic line with a final cadence. The bass staff concludes the accompaniment with a final cadence, including a B-flat note.

Handwritten musical notation for the first system. The treble staff contains a melodic line with a slur over the first four measures and a fermata over the fifth. The bass staff contains a bass line with a key signature of one sharp (F#) and a common time signature (C). The notes in the bass line are: F#2, G2, A2, B2, C3.

Handwritten musical notation for the second system. The treble staff continues the melodic line with a slur over the first four measures. The bass staff continues the bass line with notes: D3, E3, F3, G3, A3.

Handwritten musical notation for the third system. The treble staff continues the melodic line with a slur over the first three measures and a fermata over the fourth. The bass staff continues the bass line with notes: B2, C3, D3, E3, F3.

Handwritten musical notation for the fourth system. The treble staff contains a few notes, including a sharp sign. The bass staff contains a few notes, including a sharp sign.

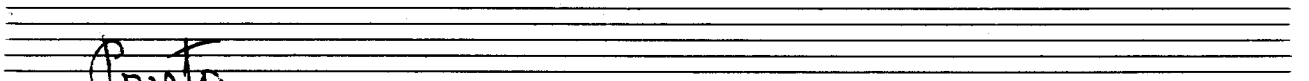
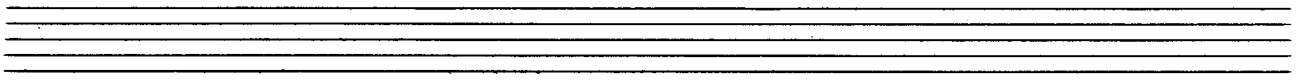
Two sets of empty musical staves at the bottom of the page, each consisting of a treble and bass staff.

frei (rubato)

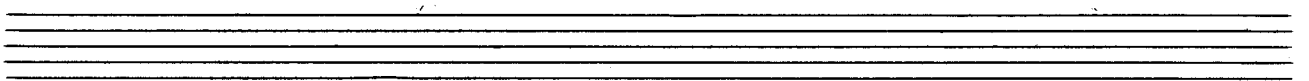
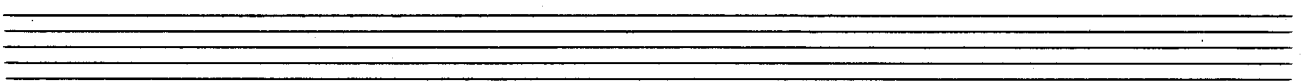
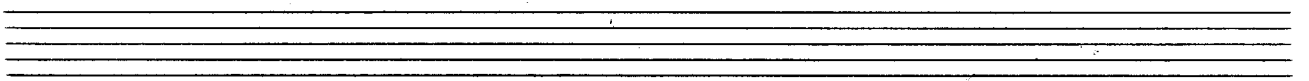
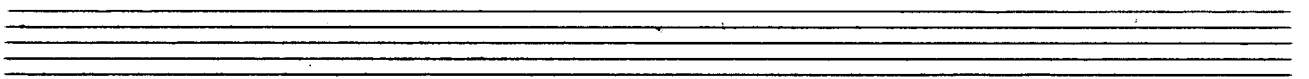
rubato

D.e.
ad

breit



Presto



Handwritten musical notation for the first system, featuring a treble clef with a key signature of one sharp (F#) and a bass clef with a key signature of one flat (Bb). The notation includes chords and melodic lines with various fingerings and articulations.

Handwritten musical notation for the second system, continuing the piece with similar notation and a key signature of one sharp (F#).

Handwritten musical notation for the third system, ending with a double bar line and the word "Folgt" with an arrow pointing to the right.

(nur letzte +

lento weit.

FINE

Handwritten musical notation for the final system, including the instruction "lento weit." and ending with a box labeled "FINE".

Handwritten musical notation for the first system. The treble staff contains a melodic line with eighth-note patterns and slurs. The bass staff contains a bass line with a wavy line, a whole note, and a half note.

Handwritten musical notation for the second system. The treble staff contains a melodic line with eighth-note patterns and slurs. The bass staff contains a bass line with a wavy line, a whole note, and a half note.

Handwritten musical notation for the third system. The treble staff contains a melodic line with eighth-note patterns and slurs. The bass staff contains a bass line with a wavy line, a whole note, and a half note.

zit
p.c.
al
Fue
||

leuto

Handwritten musical notation for the first system. It consists of two staves: a treble clef staff and a bass clef staff. The time signature is 4/4. A dynamic marking 'pp' is circled in the first measure. The treble staff contains a series of chords, and the bass staff contains a simple bass line.

Handwritten musical notation for the second system. It consists of two staves: a treble clef staff and a bass clef staff. The treble staff contains a series of chords, and the bass staff contains a more active bass line.

Handwritten musical notation for the third system. It consists of two staves: a treble clef staff and a bass clef staff. The treble staff contains a melodic line, and the bass staff contains chords.

Handwritten musical notation for the first system, featuring a treble and bass clef with various notes and rests.

Handwritten musical notation for the second system, including a treble clef and a bass clef with complex rhythmic patterns.

Handwritten musical notation for the third system, ending with a double bar line and performance instructions: *2. + D.C. al*

Handwritten musical notation for the fourth system, concluding with a double bar line and the word *Fine*.

Moderato (breit)

Handwritten musical notation for the first system. It consists of a treble clef and a bass clef. The time signature is 4/4. The music begins with a forte (ff) dynamic. The right hand has a melodic line with a slur and a fermata. The left hand has a bass line with a slur and a fermata. There are some handwritten annotations like '2' and '3' above notes. The system ends with a double bar line and a fermata.

Handwritten musical notation for the second system. It consists of a treble clef and a bass clef. The time signature is 4/4. The music continues from the first system. The right hand has a melodic line with a slur and a fermata. The left hand has a bass line with a slur and a fermata. There are some handwritten annotations like 'rit' and '2' above notes. The system ends with a double bar line and a fermata.

Handwritten musical notation for the third system. It consists of a treble clef and a bass clef. The time signature is 4/4. The music continues from the second system. The right hand has a melodic line with a slur and a fermata. The left hand has a bass line with a slur and a fermata. There are some handwritten annotations like 'rit' and '3' above notes. The system ends with a double bar line and a fermata.

Handwritten musical notation for the fourth system. It consists of a treble clef and a bass clef. The time signature is 4/4. The music continues from the third system. The right hand has a melodic line with a slur and a fermata. The left hand has a bass line with a slur and a fermata. There are some handwritten annotations like 'rit' and '2' above notes. The system ends with a double bar line and a fermata.

Handwritten musical notation on a grand staff. The right hand part features a melodic line with a circled 'p' dynamic marking. The left hand part consists of a bass line with several notes. The system is divided into two measures by a vertical bar line.

Handwritten musical notation on a grand staff. The right hand part has a series of eighth notes with a slur. The left hand part has a few notes with a slur. The system is divided into three measures by vertical bar lines.

Handwritten musical notation on a grand staff. The right hand part has a melodic line with a slur and a fermata. The left hand part has a bass line with a slur. The system is divided into three measures by vertical bar lines. The word "rit" is written above the second measure. The system ends with a double bar line and a key signature change to D major, with the text "2. x D.C. al" written above.

Handwritten musical notation on a grand staff. The right hand part has a melodic line with a slur. The left hand part has a bass line with a slur. The system is divided into two measures by a double bar line. The word "rit" is written below the first measure. The system ends with a double bar line and a key signature change to D major, with the text "rit" written below.

Allegro (mod.)

Handwritten musical notation for the first system, measures 1-4. The notation is in treble and bass clefs with a 4/4 time signature. A circled 'P' is written above the first measure. The music consists of chords and melodic lines with slurs and accents. The word 'ruhig' is written below the first measure.

Handwritten musical notation for the second system, measures 5-8. The notation continues with chords and melodic lines, including slurs and accents.

Handwritten musical notation for the third system, measures 9-12. The notation continues with chords and melodic lines, including slurs and accents.

Handwritten musical notation for the fourth system, measures 13-16. The notation continues with chords and melodic lines, including slurs and accents.

letzte gut Fine

2. + D.C.
od Fine

frei (rubato) (Landsknechtlied — 16. Jahrhundert)

Handwritten musical notation for the first system, featuring a treble clef, a key signature of one sharp (F#), and a common time signature (C). The melody is written on a single staff with a large slur over the first two measures. The bass line consists of a few notes in the first measure followed by a long rest.

Handwritten musical notation for the second system, continuing the melody with a large slur. The bass line has some notes in the first measure and rests in the second. The system ends with a double bar line and a fermata over the final note.

Handwritten musical notation for the third system, featuring a treble clef, a key signature of one sharp (F#), and a common time signature (C). The melody includes triplets and a final flourish. The bass line has notes in the first measure and rests in the second.

Handwritten musical notation for the fourth system, featuring a treble clef, a key signature of one sharp (F#), and a common time signature (C). The system ends with a double bar line, a fermata, and the instruction "D.C." (Da Capo).

soler

breit

Handwritten musical notation for the first system. The treble staff contains several chords and melodic lines, with a circled sharp sign (#) in the first measure. The bass staff contains a simple bass line with notes and rests. The system concludes with a double bar line.

Handwritten musical notation for the second system. It continues the piece with similar notation to the first system, including chords and a bass line. The system ends with a double bar line.

Handwritten musical notation for the third system. It features a first ending (1.) and a second ending (2.) marked with brackets. The notation includes chords and rests. A marking "p.c. ad" is written above the staff. The system ends with a double bar line.

Handwritten musical notation for the fourth system. The treble staff shows notes and rests, followed by a large, decorative flourish that spans across the system. The system ends with a double bar line.