

slow Beat

Handwritten musical score for the first system. It features a treble clef, a 4/4 time signature, and a key signature of two sharps (F# and C#). The music consists of a single melodic line with slurs and accents. A large '4' is written below the staff, likely indicating the time signature.

Handwritten musical score for the second system. It features a grand staff with treble and bass clefs. The music includes complex chordal textures in the right hand and a melodic line in the left hand, with slurs and accents.

Handwritten musical score for the first system. The top staff is in treble clef and contains dense chordal textures with various accidentals (sharps, flats, naturals) and some ledger lines. The bottom staff is in bass clef and contains a melodic line with eighth and sixteenth notes. The system is divided into three measures by vertical bar lines.

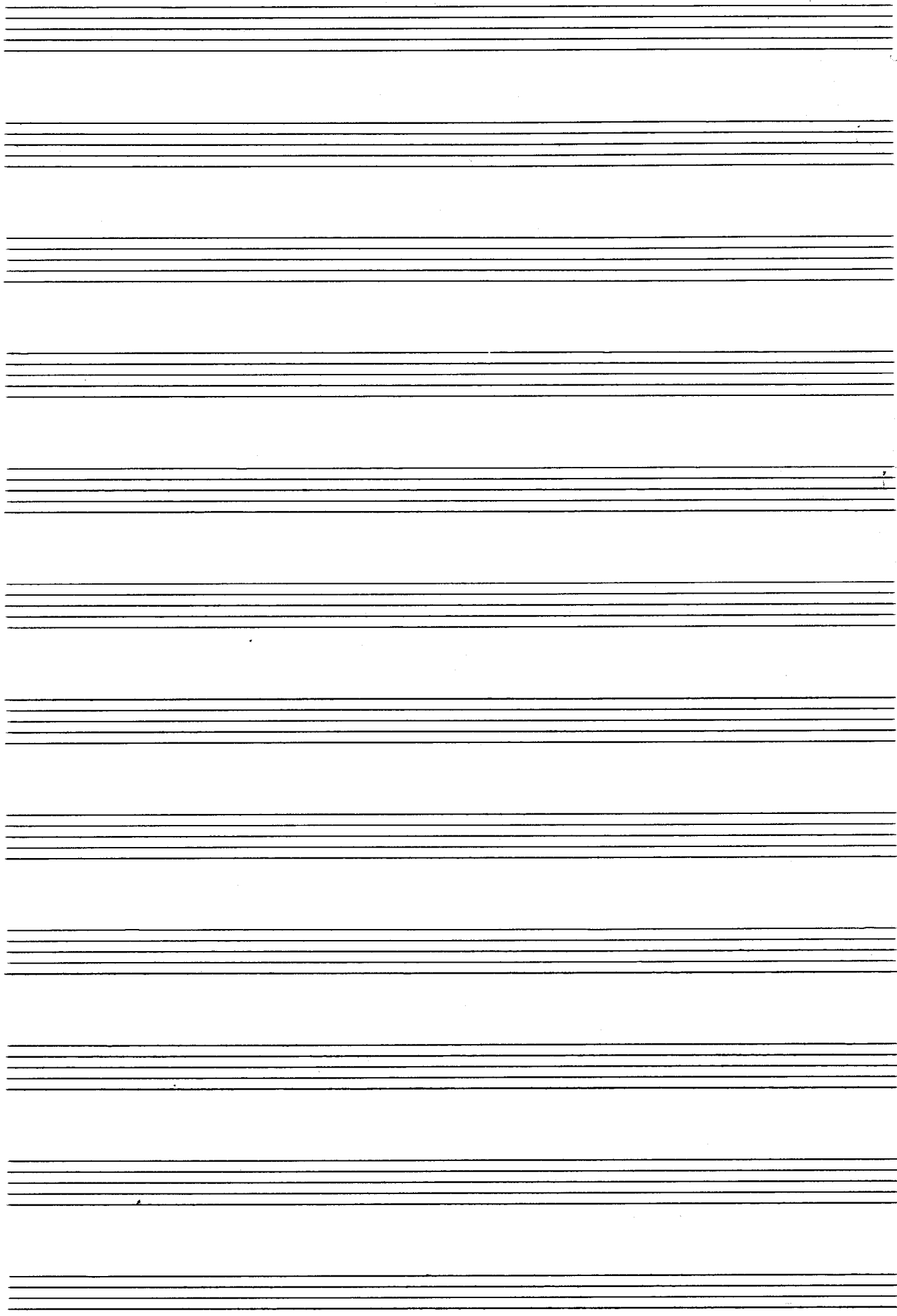
Handwritten musical score for the second system. The top staff continues the complex chordal textures from the first system. The bottom staff continues the melodic line. The system is divided into three measures. There are some additional markings like a fermata-like symbol at the end of the top staff.



Handwritten musical score for the first system. The top staff is a piano part with a treble clef, containing complex chordal textures and melodic lines. The bottom staff is a bass part with a bass clef, featuring a simple rhythmic accompaniment. Dynamics include *cresc.*, *mf*, and *f*. A circled '1' is written in the first measure of the piano staff.

Handwritten musical score for the second system. The piano staff (top) includes dynamic markings such as *pp*, *ppp*, *pp*, *ppp*, and *pp*. The bass staff (bottom) has a simple accompaniment. The system concludes with the instruction *dal f* and *rit* with a double bar line and repeat sign. A diagonal line is drawn across the bottom of the system with the text *da qui da capo al f*.

Handwritten musical notation on a grand staff. The top staff has a treble clef, a key signature of one sharp (F#), and a common time signature (C). The second staff has a bass clef and a common time signature (C). A box labeled "FIN" is written above the first staff, with a vertical line extending down to the second staff. The rest of the page contains several empty grand staves.



8 Takte - 14 Sekunden

Handwritten musical score for the first system. It consists of two staves. The top staff contains notes with various accidentals and dynamics. The bottom staff is mostly empty.

Measure	Staff 1 (Notes)	Staff 2 (Notes)
1	Notes with sharp sign and accents	Empty
2	Notes with sharp sign and accents	Empty
3	Notes with sharp sign and accents	Empty
4	Notes with sharp sign and accents	Empty

Empty musical staff lines.

Handwritten musical score for the second system. It consists of two staves. The top staff contains notes with various accidentals and dynamics. The bottom staff is mostly empty.

Measure	Staff 1 (Notes)	Staff 2 (Notes)
1	Notes with sharp sign and accents	Empty
2	Notes with sharp sign and accents	Empty
3	Notes with sharp sign and accents	Empty
4	Notes with sharp sign and accents	Empty

Empty musical staff lines.

Handwritten musical score for the first system. The top staff is in treble clef and the bottom staff is in bass clef. The music consists of three measures. The first measure shows a melodic line in the treble with eighth notes and a bass line with quarter notes and accents. The second and third measures feature a melodic line in the treble with a long note and a bass line with a long note and a fermata. The key signature has one flat (B-flat).

Handwritten musical score for the second system. The top staff is in treble clef and the bottom staff is in bass clef. The music consists of four measures. The first measure shows a melodic line in the treble with eighth notes and a bass line with quarter notes and accents. The second measure shows a melodic line in the treble with a long note and a bass line with a long note and a fermata. The third measure shows a melodic line in the treble with a long note and a bass line with a long note and a fermata. The fourth measure shows a melodic line in the treble with a long note and a bass line with a long note and a fermata. The key signature has one flat (B-flat).



Handwritten musical score for the first system. It consists of two staves: a piano part on the left and a violin part on the right. The piano part begins with a treble clef, a key signature of one sharp (F#), and a common time signature (C). The first measure contains a complex chordal texture with many notes, some marked with accents. The second measure is a whole rest. The third measure continues the complex texture. The fourth measure is a whole rest. The violin part begins with a treble clef and a common time signature. The first measure contains a whole note chord. The second measure contains a half note chord. The third measure contains a half note chord. The fourth measure contains a whole note chord. There are several empty staves below the piano and violin parts.

Handwritten musical score for the second system. It consists of two staves: a piano part on the left and a violin part on the right. The piano part begins with a treble clef, a key signature of one sharp (F#), and a common time signature (C). The first measure contains a quarter note chord. The second measure contains a quarter note chord. The third measure contains a quarter note chord. The fourth measure contains a quarter note chord. The fifth measure is a whole rest. The sixth measure contains a quarter note chord. The seventh measure contains a quarter note chord. The eighth measure contains a quarter note chord. The ninth measure contains a quarter note chord. The tenth measure is a whole rest. The violin part begins with a treble clef and a common time signature. The first measure contains a whole note chord. The second measure contains a whole note chord. The third measure contains a whole note chord. The fourth measure contains a whole note chord. The fifth measure is a whole rest. The sixth measure contains a whole note chord. The seventh measure contains a whole note chord. The eighth measure contains a whole note chord. The ninth measure contains a whole note chord. The tenth measure is a whole rest. There are several empty staves below the piano and violin parts.

Handwritten musical score for the first system. The top staff is in treble clef and the bottom staff is in bass clef. The music consists of several measures with notes, rests, and dynamic markings such as accents (^) and slurs. The key signature has one sharp (F#) and the time signature is 4/4.

Handwritten musical score for the second system. The notation continues with more complex rhythmic patterns and dynamics. The key signature changes to one flat (Bb) in the second measure. The system concludes with a double bar line and repeat signs.

Handwritten musical notation at the bottom of the page, including a treble clef and a double bar line.

mit  $\text{||:} \text{||}$   
 dann  $\text{dal} \text{ } \text{||:} \text{||}$   
 dann  $\text{dal} \text{ } \text{||:} \text{||}$



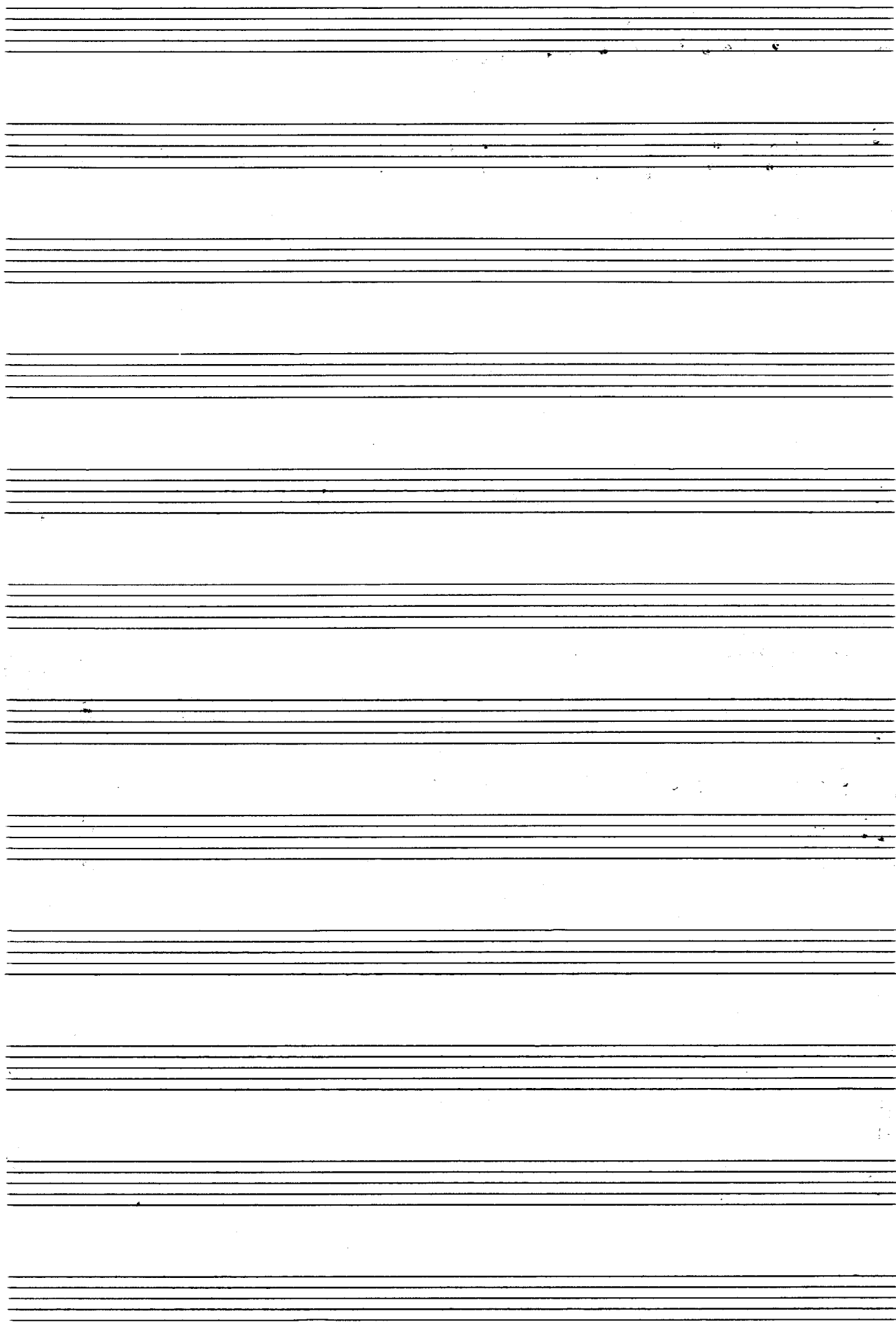
*sempre dim...*



Handwritten musical score for piano. The top staff is in treble clef with a key signature of one sharp (F#). The bottom staff is in bass clef. The music consists of two measures. The first measure contains a melodic line in the treble and a bass line in the bass. The second measure continues the melodic line with a fermata. Above the first measure, there are four slanted lines. Above the second measure, there are four slanted lines. A bracket under the first measure is labeled "Block (A)". A box containing the letter "F" is labeled "Block (F)".

*sempre dim*

Handwritten musical score for piano. The top staff is in treble clef with a key signature of one sharp (F#). The bottom staff is in bass clef. The music consists of six measures. The first four measures each contain a single note in the treble staff, with the word "Block" written above each note and a circled letter "A" below each note. The notes are connected by a wavy line. The fifth measure contains a single note in the treble staff with a circled letter "A" below it and a circled "pp" below it. The sixth measure contains a single note in the treble staff with a circled letter "A" below it and a circled "fff" below it. The word "Block" is written above the notes in the first four measures. The word "Coda" is written above the sixth measure. A box containing the word "Ein" is written above the sixth measure.



13

Slow

Handwritten musical score for the first system. It consists of a grand staff with three staves. The top staff is in treble clef, the middle in alto clef, and the bottom in bass clef. The time signature is 4/4. A circled 'p' (piano) dynamic marking is present in the first measure of the top staff. The notation includes various notes, rests, and accidentals, with some notes beamed together. The score is mostly blank, with some faint lines and notes visible.

Handwritten musical score for the second system. It consists of a grand staff with three staves. The top staff is in treble clef, the middle in alto clef, and the bottom in bass clef. The time signature is 4/4. A 'cresc.' (crescendo) marking with a dashed line and an arrow is written across the middle of the system. The notation is more detailed, featuring many notes, rests, and accidentals, with some notes beamed together. The score is mostly blank, with some faint lines and notes visible.

Handwritten musical score for the first system. The piano part (top staff) features complex chordal accompaniment with many accidentals and a dynamic marking of *f*. The violin part (middle staff) has a melodic line with some accidentals. The system is divided into three measures.

Handwritten musical score for the second system. The piano part (top staff) continues with complex chordal accompaniment. The violin part (middle staff) continues with a melodic line. The system is divided into four measures.

*ff dir =*

Handwritten musical score for the first system. It consists of two staves. The upper staff contains several measures of music with notes and rests, marked with a forte (*ff*) dynamic and an accent (^). The lower staff contains a bass line with notes and rests. There are various musical notations, including a circled 'P' with an accent (^) in the second measure of the upper staff.

Handwritten musical score for the second system. It consists of two staves. The upper staff contains several measures of music with notes and rests, marked with a piano (*pp*) dynamic and a crescendo (*cresc..*) marking. The lower staff contains a bass line with notes and rests. There are various musical notations, including a circled 'P' with an accent (^) in the second measure of the upper staff.

Handwritten musical score for the first system. The top staff is in treble clef and the bottom staff is in bass clef. The music consists of several measures with various notes, rests, and accidentals. A dynamic marking 'f' is present in the second measure of the top staff.

Handwritten musical score for the second system. The top staff is in treble clef and the bottom staff is in bass clef. The music continues with more complex notation, including many beamed notes and accidentals. A dynamic marking 'f' is present in the second measure of the top staff.

1+ dal  $\text{f}$  mit  $\text{ff}$   
 2+ dal  $\text{f}$  olue  $\text{ff}$   
 3+ dal  $\text{f}$  al  $\text{f}$



♩ lauge bis

Fin!

(ppp)

ad. libitum

(♭)

A series of 12 empty musical staves, each consisting of five horizontal lines, arranged vertically on the page. The staves are evenly spaced and occupy most of the page's vertical space.

Sehr langsam (slow) - beat

Handwritten musical score for the first system. It consists of two staves: a piano staff (treble clef) and a bass staff (bass clef). The piano staff begins with a circled 'pp' dynamic marking. The music is written in a key with one sharp (F#) and a 4/4 time signature. The piano part features a melodic line with slurs and accents, while the bass part provides a simple accompaniment with a few notes and rests. The system is divided into four measures.

Handwritten musical score for the second system. It consists of two staves: a piano staff (treble clef) and a bass staff (bass clef). The piano staff begins with a circled 'p' dynamic marking. The music continues in the same key and time signature. The piano part has a more active melodic line with slurs and accents, while the bass part continues with a simple accompaniment. The system is divided into four measures.

Handwritten musical score for the first system. The top staff is in treble clef and contains a melodic line with eighth and sixteenth notes, including accidentals like sharps and flats. The bottom staff is in bass clef and contains a bass line with fewer notes and rests. The system is divided into three measures by vertical bar lines.

Handwritten musical score for the second system. The top staff is in treble clef and features complex notation with many notes, some beamed together, and a forte 'f' dynamic marking. The bottom staff is in bass clef and contains a melodic line. A circled 'p' dynamic marking is present in the third measure of the top staff. The system is divided into three measures by vertical bar lines.

subito ff (breit)

Handwritten musical score for the first system. It features a treble clef, a key signature of one sharp (F#), and a 4/4 time signature. The notation includes a melody line with notes and rests, and a piano accompaniment line with chords and dynamics. The piano part has notes written vertically above the staff. Dynamics include 'ff' and 'breit' with accents.

Handwritten musical score for the second system. It features a treble clef, a key signature of one sharp (F#), and a 4/4 time signature. The notation includes a melody line with notes and rests, and a piano accompaniment line with chords and dynamics. The piano part has notes written vertically above the staff. Dynamics include 'ff' and 'breit' with accents.

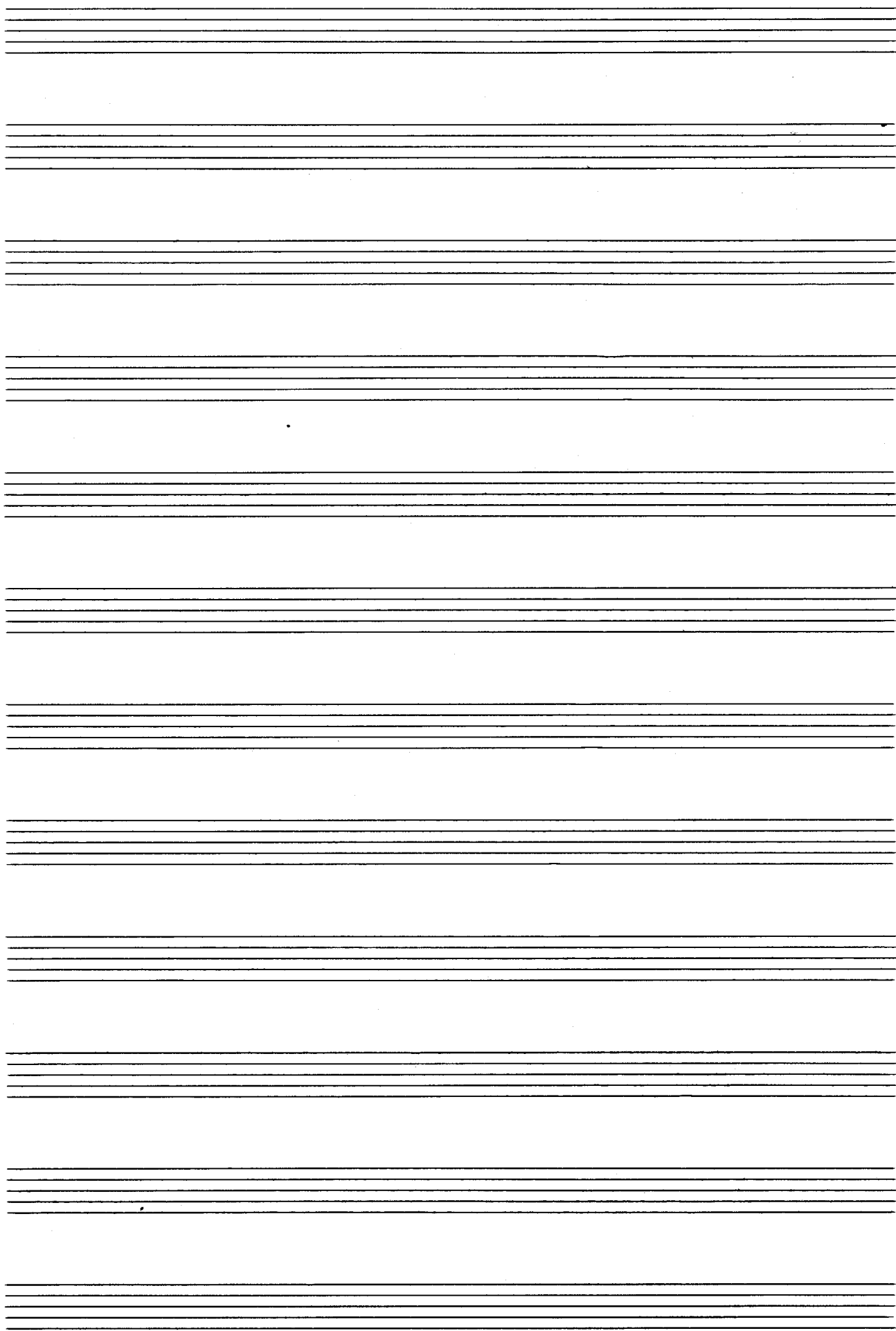
Handwritten musical score for the first system, featuring two staves with notes and chords. The top staff has a treble clef and the bottom staff has a bass clef. The music is divided into three measures. Above the first measure is a chord symbol  $b7/9$ . Above the second measure is a chord symbol  $\# \# b7/9$ . Above the third measure is a chord symbol  $\# \# \# b7/9$ . The notes in the top staff are mostly whole notes, and the bottom staff has a rhythmic pattern of quarter notes.

Handwritten musical score for the second system, featuring two staves with notes and chords. The top staff has a treble clef and the bottom staff has a bass clef. The music is divided into three measures. Above the first measure is the text  $dim >$ . Above the second measure is a chord symbol  $\# b7/9$  and the text  $pp$ . Above the third measure is a chord symbol  $b b7/9$  and the text  $ff$ . The notes in the top staff are mostly whole notes, and the bottom staff has a rhythmic pattern of quarter notes.

1+ dol  $\phi$  mit  $||:||$   
 2+ " " ohne  $||:||$   
 3+ "  $\phi$  al  $\phi$

Handwritten musical notation on a five-staff system. The notation includes a treble clef, a sharp sign (#), a common time signature (C), a tempo marking  $\text{♩} = 100$ , a dynamic marking *pp*, and a boxed "Fin" instruction. The notes are mostly on the first two staves.

A series of ten empty musical staves for writing.





rasch

Handwritten musical score for the first system. It consists of a grand staff with a treble clef, a key signature of one sharp (F#), and a 4/4 time signature. The music is written on a grand staff with a piano (p) dynamic marking. The first two measures are marked with a slur and a 'V' symbol. The last two measures are marked with accents and a 'V' symbol. The score is enclosed in a decorative bracket on the left side.

Handwritten musical score for the second system. It consists of a grand staff with a treble clef, a key signature of one sharp (F#), and a 4/4 time signature. The music is written on a grand staff with a piano (p) dynamic marking. The first two measures are marked with a slur and a 'V' symbol. The last two measures are marked with accents and a 'V' symbol. The score is enclosed in a decorative bracket on the left side.

Handwritten musical score for the first system. The top staff is in treble clef and contains notes with various accidentals (sharps, flats, naturals) and dynamics (p, f). The bottom staff is in bass clef and contains notes with various accidentals and dynamics. The score is divided into measures by vertical bar lines.

Handwritten musical score for the second system. The top staff is in treble clef and contains notes with various accidentals and dynamics. The bottom staff is in bass clef and contains notes with various accidentals and dynamics. The score is divided into measures by vertical bar lines.

Handwritten musical score for the first system. It consists of a grand staff with a treble clef on the top staff and a bass clef on the bottom staff. The music is written in a key with one sharp (F#) and a common time signature. The first two measures feature a melodic line in the treble clef with notes G4, A4, B4, C5, and D5, with a slur over the first two notes. The bass clef part has notes G3, A3, B3, C4, and D4. The next two measures continue the melodic line in the treble clef with notes E5, F#5, G5, and A5. The bass clef part has notes E3, F#3, G3, and A3. The final two measures show a descending melodic line in the treble clef with notes G5, F#5, E5, and D5. The bass clef part has notes G3, F#3, E3, and D3. There are dynamic markings 'p' and 'f' throughout the system.

Handwritten musical score for the second system. It consists of a grand staff with a treble clef on the top staff and a bass clef on the bottom staff. The music continues in the same key and time signature. The first two measures feature a melodic line in the treble clef with notes G4, A4, B4, and C5. The bass clef part has notes G3, A3, B3, and C4. The next two measures continue the melodic line in the treble clef with notes D5, E5, F#5, and G5. The bass clef part has notes D3, E3, F#3, and G3. The final two measures show a descending melodic line in the treble clef with notes F#5, E5, D5, and C5. The bass clef part has notes F#3, E3, D3, and C3. There are dynamic markings 'p' and 'f' throughout the system.

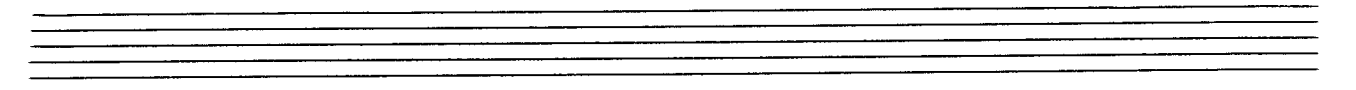
Handwritten musical notation for the first system. The treble staff contains a melodic line with a slur over the first two measures, which include a flat (b) and a sharp (#) above the notes. The bass staff provides a rhythmic accompaniment with eighth and quarter notes.

Handwritten musical notation for the second system. The staff is mostly blank, with the handwritten text "letzten 4 Takte wiederholt" (last 4 measures repeated) written across the middle of the staff.

Handwritten musical notation for the third system. The treble staff features a melodic line with a slur and accents (>) on each of the four notes. The bass staff continues with a rhythmic accompaniment.

Handwritten musical notation for the fourth system. The treble staff features a melodic line with a slur and accents (>) on each of the four notes. The bass staff continues with a rhythmic accompaniment.

Handwritten musical notation for the fifth system. The treble staff features a melodic line with a slur and accents (>) on each of the four notes. The bass staff continues with a rhythmic accompaniment. The system ends with a double bar line and repeat dots.



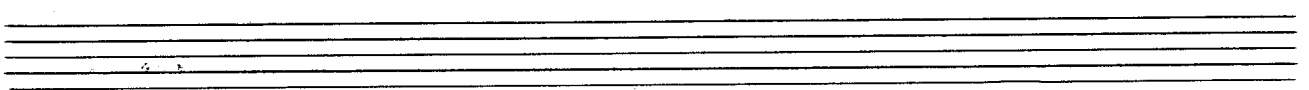
Handwritten musical notation for the first system. The treble staff contains a melodic line with eighth and sixteenth notes, including a triplet. The bass staff contains a rhythmic accompaniment with chords and rests. A double bar line is present at the end of the system.

Handwritten musical notation for the second system. The treble staff continues the melodic line with various note values and rests. The bass staff provides harmonic support with chords and rests. A double bar line is present at the end of the system.

Handwritten musical notation for the third system. The treble staff features a melodic line with some slurs and accents. The bass staff contains a rhythmic accompaniment with chords and rests. A double bar line is present at the end of the system.

Handwritten musical notation for the fourth system. The treble staff contains a highly rhythmic and complex melodic line with many slurs and accents. The bass staff has a rhythmic accompaniment with chords and rests. A double bar line is present at the end of the system.

Handwritten musical notation for the fifth system. The treble staff contains a melodic line with some slurs and accents. The bass staff has a rhythmic accompaniment with chords and rests. A double bar line is present at the end of the system.



Handwritten musical notation for the first system, featuring a treble and bass clef with various notes, rests, and accidentals.

letzten 8 Takte nochmals

Handwritten musical notation for the third system, showing a treble and bass clef with notes and rests.

Handwritten musical notation for the fourth system, showing a treble and bass clef with notes and rests.

Handwritten musical notation for the fifth system, including a treble and bass clef, notes, rests, and a double bar line with repeat signs.

dal  
mit ||:||  
dann  
weiter! →

*breit*