

langsam I.

pp
4/8
4
4

4
4

4
4
pp
FINE

Handwritten musical notation for the first system. It consists of two staves (treble and bass clef). The treble staff begins with a circled *pp* dynamic marking. The music features a melodic line with notes and accidentals (sharps and flats) and a bass line with notes and accidentals. A large slur covers the first two measures.

Handwritten musical notation for the second system. It continues the melodic and bass lines from the first system. The treble staff has notes and accidentals, and the bass staff has notes and accidentals. A large slur covers the first two measures.

Handwritten musical notation for the third system. The treble staff has notes and accidentals, and the bass staff has notes and accidentals. A large slur covers the first two measures.

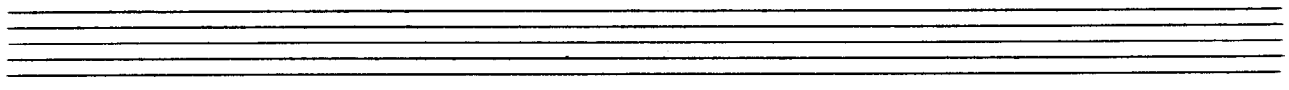
Handwritten musical notation for the fourth system. The treble staff has notes and accidentals, and the bass staff has notes and accidentals. A large slur covers the first two measures. The system concludes with the markings *D.C.*, *al*, and *Fine.*

II.

Handwritten musical score for the first system. It consists of two staves: a treble clef staff and a bass clef staff. The time signature is 4/8. The dynamics are marked 'pp'. The treble staff contains a melodic line with a slur over the first two measures and a fermata in the second measure. The bass staff contains a bass line with a slur over the first two measures and a fermata in the second measure. The key signature has one sharp (F#).

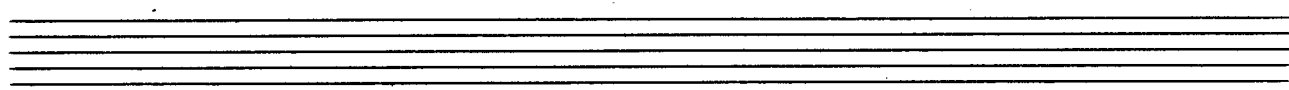
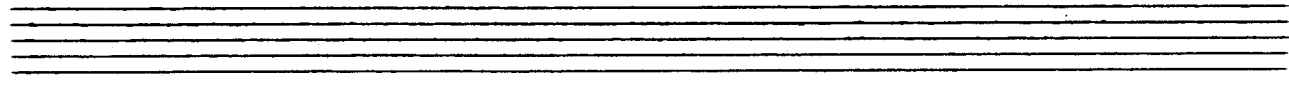
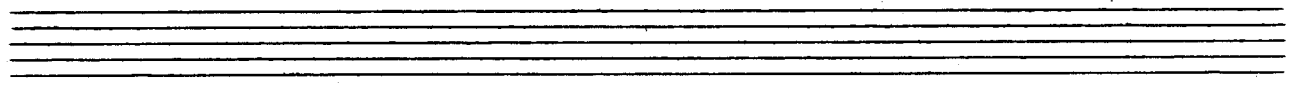
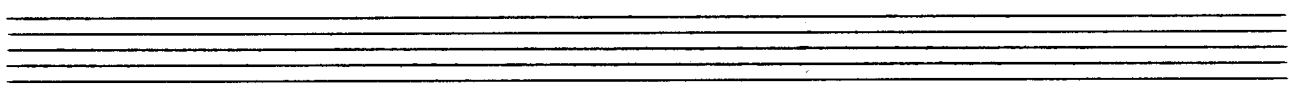
Handwritten musical score for the second system. It consists of two staves: a treble clef staff and a bass clef staff. The time signature is 4/8. The treble staff contains a melodic line with a slur over the first two measures and a fermata in the second measure. The bass staff contains a bass line with a slur over the first two measures and a fermata in the second measure. The key signature has one sharp (F#).

Handwritten musical score for the third system. It consists of two staves: a treble clef staff and a bass clef staff. The treble staff has a 7/8 time signature and contains a melodic line with a slur over the first two measures and a fermata in the second measure. The bass staff has a 4/8 time signature and contains a bass line with a slur over the first two measures and a fermata in the second measure. The key signature has one sharp (F#).



lento III.

pp 4/4



Handwritten musical notation for the first system. The treble staff contains three measures of music with notes and rests, including a sharp sign (#) and a 9-measure rest. The bass staff contains three measures of music with notes and rests, including a flat sign (b) and a 9-measure rest. A large brace spans the bottom of the system.

Handwritten musical notation for the second system. The treble staff contains three measures of music with notes and rests, including a flat sign (b) and a 9-measure rest. The bass staff contains three measures of music with notes and rests, including a sharp sign (#) and a 9-measure rest. A large brace spans the bottom of the system.

Handwritten musical notation for the third system. The treble staff contains three measures of music with notes and rests, including a flat sign (b) and a 9-measure rest. The bass staff contains three measures of music with notes and rests, including a sharp sign (#) and a 9-measure rest. A large brace spans the bottom of the system.

Handwritten musical notation for the fourth system. The treble staff contains three measures of music with notes and rests, including a flat sign (b) and a 9-measure rest. The bass staff contains three measures of music with notes and rests, including a sharp sign (#) and a 9-measure rest. A large brace spans the bottom of the system. The system concludes with a double bar line and a circled "Fin" written above the staff.

IV.

Presto
♩. =

Handwritten musical notation for the first system, featuring a treble and bass clef, a 6/8 time signature, and a piano (p) dynamic marking. The music consists of two staves with a melodic line in the treble and a bass line in the bass. A slur covers the first two measures, and a bracket groups the final two notes of the first staff. A fermata is placed over the final notes of both staves.

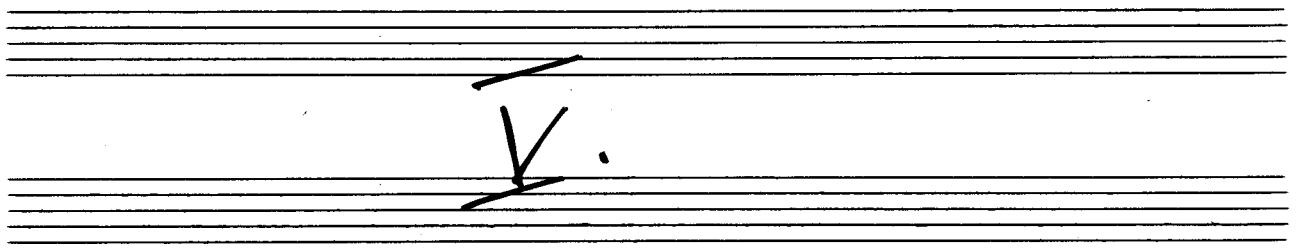
Handwritten musical notation for the second system, continuing the piece with similar notation to the first system, including a 6/8 time signature and a fermata at the end.

Handwritten musical notation for the third system, concluding the piece with a fermata and a box containing the word "FIN!".

Handwritten musical notation for the first system. It consists of two staves. The top staff is in treble clef and the bottom staff is in bass clef. The time signature is 6/8. The music begins with a key signature of one flat (B-flat). A slur covers the first two measures of the top staff. The key signature changes to two sharps (F# and C#) in the third measure. The bottom staff has a 3/8 time signature and a slur covering the first two measures. The piece ends with a double bar line.

Handwritten musical notation for the second system. It consists of two staves. The top staff is in treble clef and the bottom staff is in bass clef. The time signature is 6/8. The music begins with a key signature of one flat (B-flat). A slur covers the first two measures of the top staff. The key signature changes to two sharps (F# and C#) in the third measure. The bottom staff has a 3/8 time signature and a slur covering the first two measures. The piece ends with a double bar line.

Handwritten musical notation for the third system. It consists of two staves. The top staff is in treble clef and the bottom staff is in bass clef. The time signature is 6/8. The music begins with a key signature of one flat (B-flat). A slur covers the first two measures of the top staff. The key signature changes to two sharps (F# and C#) in the third measure. The bottom staff has a 3/8 time signature and a slur covering the first two measures. The system ends with a double bar line and the text "D.C. al. Fin".



V.

breit (Lento)

voller Werk

Handwritten musical score for the first system. It consists of three staves. The top staff contains a series of chords with various accidentals (flats and naturals). The middle staff contains chords with sharp and flat accidentals. The bottom staff contains a melodic line with various accidentals and a final note.

Handwritten musical score for the second system. It consists of three staves. The top staff contains chords with flats. The middle staff contains chords with sharps and flats. The bottom staff contains a melodic line with sharps and flats. The system ends with a double bar line and the handwritten marking "Dal segno".

Handwritten musical score for the third system. It consists of three staves. The top staff contains chords with flats and sharps. The middle staff contains chords with sharps and flats. The bottom staff contains a melodic line with a long note. The system ends with a double bar line and a box containing the word "FINE".

VI.

Moderato

♩. = sehr ruhig

Handwritten musical notation for the first system. The treble clef staff contains a melodic line with notes G4, A4, B4, C5, B4, A4, G4, and a final G4. The bass clef staff contains a bass line with notes G3, F3, E3, D3, C3, B2, A2, and a final G2. A circled 'p' is written in the bass staff. A fermata is placed over the final G4 in the treble staff.

Handwritten musical notation for the second system. The treble clef staff continues the melodic line with notes G4, A4, B4, C5, B4, A4, G4, and a final G4. The bass clef staff continues the bass line with notes G3, F3, E3, D3, C3, B2, A2, and a final G2. A fermata is placed over the final G4 in the treble staff.

Handwritten musical notation for the third system. The treble clef staff contains notes G4, A4, B4, C5, B4, A4, G4, and a final G4. The bass clef staff contains notes G3, F3, E3, D3, C3, B2, A2, and a final G2. A fermata is placed over the final G4 in the treble staff.

Handwritten musical notation for the first system, consisting of two staves. The top staff is in treble clef and the bottom in bass clef. The music features a melodic line with a long slur and a bass line with chords and eighth notes.

Handwritten musical notation for the second system, consisting of two staves. The top staff is in treble clef and the bottom in bass clef. The music includes a 'D.C.' marking at the end of the system.

Handwritten musical notation for the third system, consisting of two staves. The top staff is in treble clef and the bottom in bass clef. The music features a melodic line with a long slur and a bass line with chords and eighth notes.

Handwritten musical notation for the fourth system, consisting of two staves. The top staff is in treble clef and the bottom in bass clef. The music includes a 'Fin.' marking in a circle at the end of the system.

gr. git.

VII.

Sehr ruhige $\frac{4}{4}$

Handwritten musical notation for the first system, featuring two staves (treble and bass clef) in 4/4 time. The music is marked *pp* (pianissimo). The melody in the right hand starts with a quarter note G4 with a sharp sign, followed by quarter notes A4, B \flat 4, C \flat 4, D4, E4, F4, G4. The bass line starts with a quarter note G3 with a sharp sign, followed by quarter notes A3, B3, C4, D4, E4, F4, G4. There are various accidentals and dynamics throughout the system.

Handwritten musical notation for the second system, continuing from the first. It consists of two staves (treble and bass clef). The melody in the right hand continues with quarter notes A4, B \flat 4, C \flat 4, D4, E4, F4, G4. The bass line continues with quarter notes G3, A3, B3, C4, D4, E4, F4. There are various accidentals and dynamics throughout the system.

Handwritten musical notation for the third system. It consists of two staves (treble and bass clef). The melody in the right hand continues with quarter notes A4, B \flat 4, C \flat 4, D4, E4, F4, G4. The bass line continues with quarter notes G3, A3, B3, C4, D4, E4, F4. There are various accidentals and dynamics throughout the system. The system ends with a double bar line and a circled "F.M." marking.

Handwritten musical notation for the first system. The treble clef part begins with a melodic line containing notes with sharps (F# and C#) and a dotted quarter note. The bass clef part provides accompaniment with chords and a melodic line. The system concludes with two measures of rests.

Handwritten musical notation for the second system. The treble clef part continues the melodic line with notes including a flat (Bb) and a dotted quarter note. The bass clef part continues the accompaniment. The system concludes with two measures of rests.

Handwritten musical notation for the third system. The treble clef part continues the melodic line with notes including flats (Bb and Fb) and a dotted quarter note. The bass clef part continues the accompaniment. The system concludes with two measures of rests.

Handwritten musical notation for the fourth system. The treble clef part concludes the melodic line with a final note and a fermata. The bass clef part concludes the accompaniment with a final chord and a fermata. The system ends with a double bar line and the handwritten text "A.C. or FIN." written vertically.



Wien.

1959

Adolf
Scherbaum

Eine See —
ist Gottes Gnade.....

VIII.

sehr ruhig

Handwritten musical notation for the first system. It features two staves in treble clef with a key signature of one sharp (F#) and a 3/4 time signature. The music is marked 'pp' (pianissimo). The notation includes several triplet figures, with some notes enclosed in boxes and connected by slurs. The first measure shows a triplet of eighth notes in the right hand and a quarter note in the left hand. Subsequent measures continue with similar rhythmic patterns, including triplets of eighth notes and quarter notes.

Handwritten musical notation for the second system, continuing the piece. It maintains the same key signature and time signature. The notation consists of two staves with triplet figures and slurs, similar to the first system. The first measure of this system begins with a sharp sign on the staff.

Handwritten musical notation for the third system, continuing the piece. It maintains the same key signature and time signature. The notation consists of two staves with triplet figures and slurs, similar to the previous systems. The first measure of this system begins with a sharp sign on the staff.

Handwritten musical notation for the first system. It consists of a treble staff and a bass staff. A large slur covers the top staff. The music includes triplets and a sharp sign.

Handwritten musical notation for the second system. It consists of a treble staff and a bass staff. A large slur covers the top staff. The music includes a sharp sign and a fermata.

Handwritten musical notation for the third system. It consists of a treble staff and a bass staff. A large slur covers the top staff. The music includes a sharp sign, a fermata, and a 'pp' dynamic marking.

Handwritten musical notation for the fourth system. It consists of a treble staff and a bass staff. A large slur covers the top staff. The music includes a sharp sign, a fermata, and a 'FIN' marking.

ritardando

IX.

frei (rubato)
♩ =

roll.
werk



PRESTO



breit



Presto

f *frei*

I.

Presto (auf 1 Schlag 3 + 4 + spielen (ad. libitum))

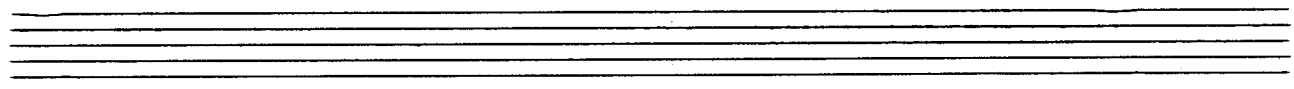
Handwritten musical notation for the first system. It consists of a grand staff with a treble clef on the upper staff and a bass clef on the lower staff. The time signature is 2/4. The music begins with a dynamic marking of *mf* and a hairpin crescendo. The first measure contains a quarter note G#4 and a quarter note G#3. The second measure contains a quarter note A#4 and a quarter note A#3. The third measure contains a quarter note B#4 and a quarter note B#3. The fourth measure contains a quarter note C#5 and a quarter note C#3. The fifth measure contains a quarter note D#5 and a quarter note D#3. The sixth measure contains a quarter note E#5 and a quarter note E#3. The seventh measure contains a quarter note F#5 and a quarter note F#3. The eighth measure contains a quarter note G#5 and a quarter note G#3. The word "hart" is written below the first measure.

Handwritten musical notation for the second system. It consists of a grand staff with a treble clef on the upper staff and a bass clef on the lower staff. The music continues from the first system. The first measure contains a quarter note G#4 and a quarter note G#3. The second measure contains a quarter note A#4 and a quarter note A#3. The third measure contains a quarter note B#4 and a quarter note B#3. The fourth measure contains a quarter note C#5 and a quarter note C#3. The fifth measure contains a quarter note D#5 and a quarter note D#3. The sixth measure contains a quarter note E#5 and a quarter note E#3. The seventh measure contains a quarter note F#5 and a quarter note F#3. The eighth measure contains a quarter note G#5 and a quarter note G#3.

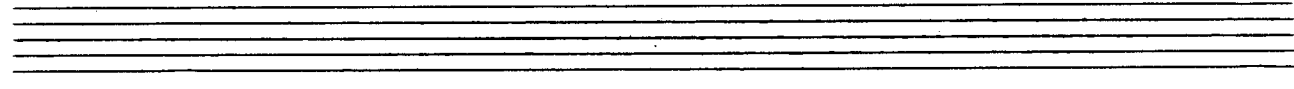
Handwritten musical notation for the third system. It consists of a grand staff with a treble clef on the upper staff and a bass clef on the lower staff. The music continues from the second system. The first measure contains a quarter note G#4 and a quarter note G#3. The second measure contains a quarter note A#4 and a quarter note A#3. The third measure contains a quarter note B#4 and a quarter note B#3. The fourth measure contains a quarter note C#5 and a quarter note C#3. The fifth measure contains a quarter note D#5 and a quarter note D#3. The sixth measure contains a quarter note E#5 and a quarter note E#3. The seventh measure contains a quarter note F#5 and a quarter note F#3. The eighth measure contains a quarter note G#5 and a quarter note G#3.



Handwritten musical notation for the first system, featuring a treble clef and a bass clef with a common time signature. The music consists of several measures with notes and accidentals.



Handwritten musical notation for the second system, continuing the piece with treble and bass clefs and a common time signature.



Handwritten musical notation for the third system, showing more complex chordal structures in both hands.



Handwritten musical notation for the fourth system, ending with a double bar line and the handwritten instruction "fast attacca" and "G.P.".

Fi.

Presto

Handwritten musical notation for the first system. It consists of two staves: a treble clef staff and a bass clef staff. The time signature is 2/8. The treble staff begins with a treble clef, a 2/8 time signature, and a key signature of one flat (B-flat). The first measure contains a triplet of eighth notes (B-flat, A, G) followed by a quarter note (F) and a quarter note (E). The second measure contains a quarter note (D), a quarter note (C), a quarter note (B), and a quarter note (A). The third measure contains a quarter note (G), a quarter note (F), a quarter note (E), and a quarter note (D). The fourth measure contains a quarter note (C), a quarter note (B), a quarter note (A), and a quarter note (G). The bass staff contains rests in all four measures.

Handwritten musical notation for the second system. It consists of two staves: a treble clef staff and a bass clef staff. The treble staff begins with a treble clef and a key signature of one flat (B-flat). The first measure contains a quarter note (B-flat), a quarter note (A), and a quarter note (G). The second measure contains a quarter note (F), a quarter note (E), and a quarter note (D). The third measure contains a quarter note (C), a quarter note (B), and a quarter note (A). The fourth measure contains a quarter note (G), a quarter note (F), and a quarter note (E). The bass staff begins with a bass clef and a key signature of one flat (B-flat). The first measure contains a triplet of eighth notes (B-flat, A, G) followed by a quarter note (F) and a quarter note (E). The second measure contains a quarter note (D), a quarter note (C), a quarter note (B), and a quarter note (A). The third measure contains a quarter note (G), a quarter note (F), a quarter note (E), and a quarter note (D). The fourth measure contains a quarter note (C), a quarter note (B), a quarter note (A), and a quarter note (G).

Handwritten musical notation for the third system. It consists of two staves: a treble clef staff and a bass clef staff. The treble staff begins with a treble clef and a key signature of one flat (B-flat). The first measure contains a quarter note (B-flat), a quarter note (A), and a quarter note (G). The second measure contains a quarter note (F), a quarter note (E), and a quarter note (D). The third measure contains a quarter note (C), a quarter note (B), and a quarter note (A). The fourth measure contains a quarter note (G), a quarter note (F), and a quarter note (E). The bass staff begins with a bass clef and a key signature of one flat (B-flat). The first measure contains a quarter note (B-flat), a quarter note (A), and a quarter note (G). The second measure contains a quarter note (F), a quarter note (E), and a quarter note (D). The third measure contains a quarter note (C), a quarter note (B), and a quarter note (A). The fourth measure contains a quarter note (G), a quarter note (F), and a quarter note (E).

Handwritten musical notation for the first system, measures 1-2. The upper staff is in treble clef with a key signature of two flats (B-flat and E-flat). The lower staff is in bass clef with a key signature of two flats. Measure 1 contains a triplet of eighth notes in the bass staff and a quarter note in the treble staff. Measure 2 contains a half note in the bass staff and a half note in the treble staff.

Handwritten musical notation for the second system, measures 3-4. The upper staff is in treble clef with a key signature of two flats. The lower staff is in bass clef with a key signature of two flats. Measure 3 contains a triplet of eighth notes in the bass staff and a quarter note in the treble staff. Measure 4 contains a half note in the bass staff and a half note in the treble staff.

Handwritten musical notation for the third system, measures 5-6. The upper staff is in treble clef with a key signature of two flats. The lower staff is in bass clef with a key signature of two flats. Measure 5 contains a triplet of eighth notes in the bass staff and a quarter note in the treble staff. Measure 6 contains a half note in the bass staff and a half note in the treble staff.

Handwritten musical notation for the fourth system, measures 7-8. The upper staff is in treble clef with a key signature of two flats. The lower staff is in bass clef with a key signature of two flats. Measure 7 contains a triplet of eighth notes in the bass staff and a quarter note in the treble staff. Measure 8 contains a half note in the bass staff and a half note in the treble staff.

Handwritten musical notation for the first system. The top staff is in treble clef and the bottom staff is in bass clef. The music consists of four measures. The first measure has a whole note in the treble clef and a triplet of eighth notes in the bass clef. The second measure has a whole note in the treble clef and a quarter note in the bass clef. The third measure has a whole note in the treble clef and a quarter note in the bass clef. The fourth measure has a whole note in the treble clef and a quarter note in the bass clef. There are various accidentals (sharps, flats) and a slur over the first two measures.

Handwritten musical notation for the second system. The top staff is in treble clef and the bottom staff is in bass clef. The music consists of four measures. The first measure has a triplet of eighth notes in the treble clef and a triplet of eighth notes in the bass clef. The second measure has a quarter note in the treble clef and a quarter note in the bass clef. The third measure has a quarter note in the treble clef and a quarter note in the bass clef. The fourth measure has a quarter note in the treble clef and a quarter note in the bass clef. There are various accidentals (sharps, flats) and a slur over the first two measures.

Handwritten musical notation for the third system. The top staff is in treble clef and the bottom staff is in bass clef. The music consists of four measures. The first measure has a triplet of eighth notes in the treble clef and a triplet of eighth notes in the bass clef. The second measure has a quarter note in the treble clef and a quarter note in the bass clef. The third measure has a quarter note in the treble clef and a quarter note in the bass clef. The fourth measure has a quarter note in the treble clef and a quarter note in the bass clef. There are various accidentals (sharps, flats) and a slur over the first two measures.

Handwritten musical notation for the fourth system. The top staff is in treble clef and the bottom staff is in bass clef. The music consists of four measures. The first measure has a quarter note in the treble clef and a quarter note in the bass clef. The second measure has a quarter note in the treble clef and a quarter note in the bass clef. The third measure has a quarter note in the treble clef and a quarter note in the bass clef. The fourth measure has a quarter note in the treble clef and a quarter note in the bass clef. There are various accidentals (sharps, flats) and a slur over the first two measures.

Handwritten musical notation for the first system. The treble staff contains a series of chords and melodic fragments, with some notes marked with slurs and accents. The bass staff provides a simple accompaniment with a few notes and rests.

Handwritten musical notation for the second system. The treble staff begins with a rest, followed by a triplet of notes. The bass staff contains chords and a melodic line with slurs.

Handwritten musical notation for the third system. The treble staff features three triplet figures. The bass staff contains chords and a melodic line.

Handwritten musical notation for the fourth system, concluding the piece. The treble staff has a melodic line with slurs and a final note marked with a fermata. The bass staff has chords and a melodic line. The system ends with a double bar line and the word "ritardando" written above.

Prestissimo

frei (rubato)

Handwritten musical notation on a grand staff. The treble clef staff contains a melodic line with various accidentals (sharps, flats, naturals) and a fermata over the final note. The bass clef staff contains a chord consisting of a sharp sign and a natural sign.

Handwritten musical notation on a grand staff, identical in structure to the first system, featuring a melodic line in the treble clef and a chord in the bass clef.

Handwritten musical notation on a grand staff, identical in structure to the first system, featuring a melodic line in the treble clef and a chord in the bass clef.

fast stacca

Handwritten musical notation on a grand staff. The treble clef staff shows a sharp sign and a natural sign, with a fermata over the natural sign. The bass clef staff shows a sharp sign and a natural sign.

sehr breit

Handwritten musical score for the first system. It consists of three staves. The top staff is in treble clef with a key signature of one flat (B-flat). The middle staff is in treble clef with a key signature of one sharp (F-sharp). The bottom staff is in bass clef with a key signature of one sharp (F-sharp). The music is marked "sehr breit" (very broad). The lyrics are: "voll. Werk keine - See ist. 80 # e s". The notes are mostly quarter notes and half notes, with some beamed eighth notes. There are some accidentals and a fermata over the final note of the first staff.

Handwritten musical score for the second system. It consists of three staves. The top staff is in treble clef with a key signature of one flat (B-flat). The middle staff is in treble clef with a key signature of one sharp (F-sharp). The bottom staff is in bass clef with a key signature of one sharp (F-sharp). The music is marked "sehr breit" (very broad). The lyrics are: "Gn - ade". The notes are mostly quarter notes and half notes, with some beamed eighth notes. There are some accidentals and a fermata over the final note of the first staff.

Handwritten musical score for the third system. It consists of three staves. The top staff is in treble clef with a key signature of one flat (B-flat). The middle staff is in treble clef with a key signature of one sharp (F-sharp). The bottom staff is in bass clef with a key signature of one sharp (F-sharp). The music is marked "sehr breit" (very broad). The notes are mostly quarter notes and half notes, with some beamed eighth notes. There are some accidentals and a fermata over the final note of the first staff.

Handwritten musical score for the first system. It consists of three staves: a treble clef staff at the top, an alto clef staff in the middle, and a bass clef staff at the bottom. The music is written in a system with two measures. The first measure shows chords in the treble and alto staves, and a single note in the bass staff. The second measure features a complex chordal texture in the treble and alto staves, with a melodic line in the bass staff. Accidentals include flats, sharps, and naturals.

Handwritten musical score for the second system, continuing the piece. It follows the same three-staff format (treble, alto, bass). The notation is similar to the first system, with two measures per system. The first measure contains chords in the upper staves and a note in the bass. The second measure shows more complex chordal structures in the upper staves and a melodic line in the bass. The piece concludes with a double bar line.

er. rit.....

Handwritten musical score for the third system. It continues the three-staff format. The first measure features chords in the treble and alto staves and a note in the bass. The second measure shows a continuation of the chordal texture in the upper staves and a melodic line in the bass. The system ends with a double bar line.

lange halten

Fine

Handwritten musical score for three staves. The top staff is treble clef, the middle two are grand staff (treble and bass clefs). The music consists of long, sweeping lines. The key signature has three sharps (F#, C#, G#). The time signature is common time (C). The piece ends with a double bar line and a hatched 'Fine' symbol.

Wien 1959
Adolf
Scherbaum