

Stücke für Orgel  
1959  
H. Scherbaum

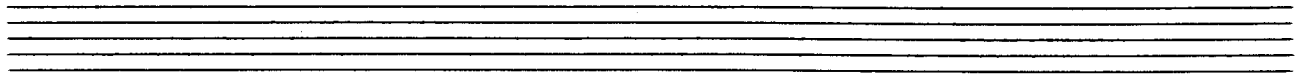
**Notenheft**

Bitte MATERIAL schonen

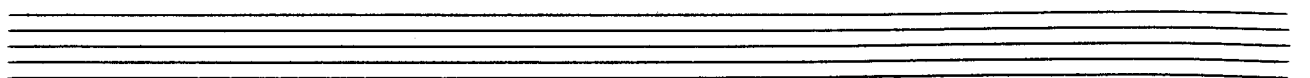
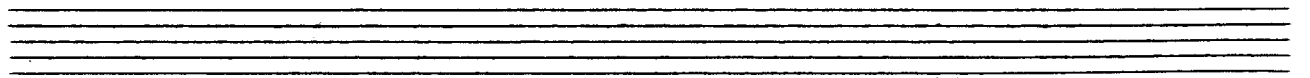
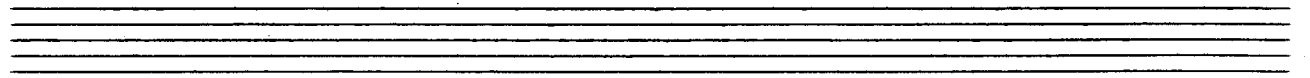
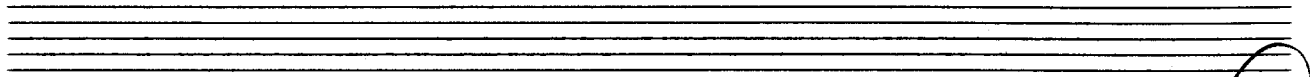
Stücke für Orgel

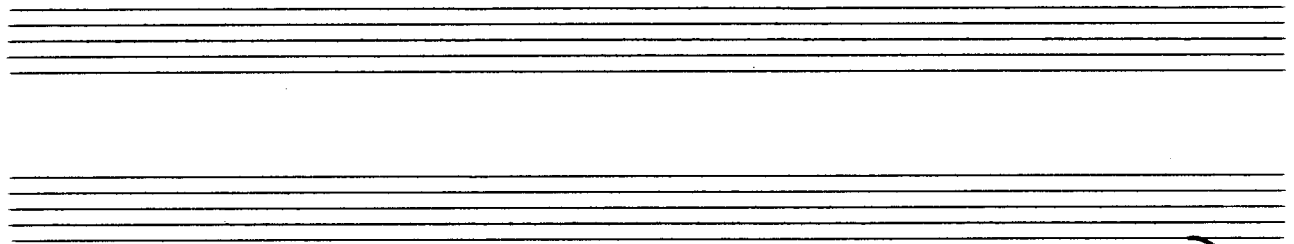
Wien 1959

A. Scherbaum



*lento* ①





(4)

(5)

(6)

②

*ruhig*

Handwritten musical notation for the first system. The treble clef staff contains a melodic line starting with a quarter rest, followed by quarter notes G4, A4, B4, C5, B4, A4, G4, and F4. The bass clef staff contains a bass line with quarter notes G2, F2, E2, D2, C2, B1, A1, and G1. A large slur covers the entire system.

①

Handwritten musical notation for the second system. The treble clef staff contains a melodic line with quarter notes G4, A4, B4, C5, B4, A4, G4, and F4. The bass clef staff contains a bass line with quarter notes G2, F2, E2, D2, C2, B1, A1, and G1. A large slur covers the entire system.

②

Handwritten musical notation for the third system. The treble clef staff contains a melodic line with quarter notes G4, A4, B4, C5, B4, A4, G4, and F4. The bass clef staff contains a bass line with quarter notes G2, F2, E2, D2, C2, B1, A1, and G1. A large slur covers the entire system.



3

breit (lento)

pesante

2

3

Handwritten musical notation for the first system. It consists of two staves: a treble clef staff on top and a bass clef staff on the bottom. The music is written in a key with one sharp (F#) and a common time signature (C). The notation includes quarter notes, half notes, and rests, with various phrasing slurs and dynamic markings such as *p* and *mf*. A circled number '3' is written above the final measure of the system.

Handwritten musical notation for the second system. It consists of two staves: a treble clef staff on top and a bass clef staff on the bottom. The music is written in a key with one sharp (F#) and a common time signature (C). The notation includes quarter notes, eighth notes, and rests, with various phrasing slurs and dynamic markings. A circled number '5' is written above the staff.

Handwritten musical notation for the third system. It consists of two staves: a treble clef staff on top and a bass clef staff on the bottom. The music is written in a key with one sharp (F#) and a common time signature (C). The notation includes quarter notes, half notes, and rests, with various phrasing slurs and dynamic markings. A circled number '7' is written above the staff.

Four empty musical staves, consisting of two treble clef staves and two bass clef staves, provided for further notation.



4

weit

18

Handwritten musical notation for the first system. It consists of two staves: a treble clef staff and a bass clef staff. The treble staff contains notes with stems, some beamed together, and a circled number '4' above it. The bass staff contains notes with stems and rests. There are vertical bar lines and a large horizontal brace spanning across the staves.

Handwritten musical notation for the second system. It consists of two staves: a treble clef staff and a bass clef staff. The treble staff contains notes with stems, some beamed together, and a circled number '1' above it. The bass staff contains notes with stems and rests. There are vertical bar lines and a large horizontal brace spanning across the staves. A circled number '2' is also present at the end of the system.

Handwritten musical notation for the third system. It consists of two staves: a treble clef staff and a bass clef staff. The treble staff contains notes with stems, some beamed together, and a circled number '3' above it. The bass staff contains notes with stems and rests. There are vertical bar lines and a large horizontal brace spanning across the staves.

④

⑤

(2te + 8v. rick.)

Fine

5

Handwritten musical notation for the first system. It consists of a treble clef and a bass clef. The time signature is 4/4, and there is a sharp sign (#) in the bass clef. The notation includes notes, rests, and a slur with the word "frei" written above it.

Handwritten musical notation for the second system. It consists of a treble clef and a bass clef. The notation includes notes, rests, and a slur with the word "accel." written above it. A circled "2" is at the end of the system.

Handwritten musical notation for the third system. It consists of a treble clef and a bass clef. The notation includes notes, rests, and a slur with the word "rit." written below it. A circled "2" is at the end of the system.

Handwritten musical notation for the first system. It consists of two staves (treble and bass clef). The notation includes various notes, rests, and accidentals. A circled number '3' is written above the staff. The system concludes with a double bar line and the initials 'G.P.'.

Handwritten musical notation for the second system. It consists of two staves (treble and bass clef). The notation includes a melodic line in the treble clef with various notes and accidentals. The word "sehr ruhig" is written above the staff. A circled number '2' is written in the beginning.

Handwritten musical notation for the third system. It consists of two staves (treble and bass clef). The notation includes a melodic line in the treble clef with various notes and accidentals. A circled number '4' is written above the staff. The system concludes with a double bar line and the initials "D.C. al".

Handwritten musical notation for the fourth system. It consists of two staves (treble and bass clef). The notation includes a melodic line in the treble clef with various notes and accidentals. The word "Fine" is written above the staff. The system concludes with a double bar line.

6

sehr ruhig

1

2

3

(2te + rit)

rit

fine

7

Allegro (auf 3)

(3+)

1

2

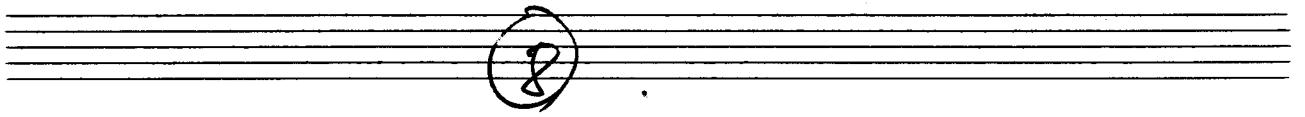
3

Handwritten musical notation for the first system. The treble clef staff contains a melodic line with notes: G4, A4, B4, C5, B4, A4, G4, F4, E4, D4. The bass clef staff contains a bass line with notes: G2, A2, B2, C3, D3, E3, F3, G3, A3, B3. A fermata is placed over the first measure of the treble staff.

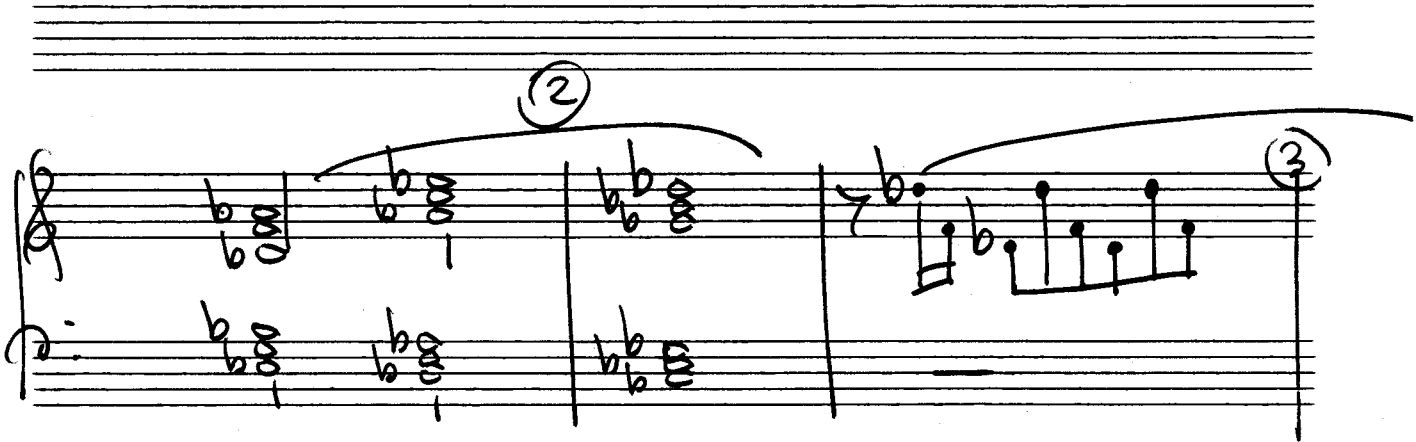
Handwritten musical notation for the second system. The treble clef staff contains a melodic line with notes: G4, A4, B4, C5, B4, A4, G4, F4, E4, D4. The bass clef staff contains a bass line with notes: G2, A2, B2, C3, D3, E3, F3, G3, A3, B3. A fermata is placed over the first measure of the treble staff.

Handwritten musical notation for the third system. The treble clef staff contains a melodic line with notes: G4, A4, B4, C5, B4, A4, G4, F4, E4, D4. The bass clef staff contains a bass line with notes: G2, A2, B2, C3, D3, E3, F3, G3, A3, B3. A fermata is placed over the first measure of the treble staff. The word "Fine" is written at the end of the system.





breit



4

5

7

8

# 8(B)

Presto

Handwritten musical notation for the first system of '8(B)'. It features a treble clef with a circled sharp sign (#) and a 2/2 time signature. The melody is written on a single staff with a slur over the first two measures. The bass staff contains two whole notes, each with a circled 'a' below it. The key signature is one sharp (F#) and the tempo is 'Presto'.

①

Handwritten musical notation for the second system of '8(B)'. It features a treble clef and a circled '1' above the staff. The melody continues on a single staff with a slur over the first two measures. The bass staff contains two whole notes, each with a circled 'a' below it.

②

Handwritten musical notation for the third system of '8(B)'. It features a treble clef and a circled '2' above the staff. The melody continues on a single staff with a slur over the first two measures. The bass staff contains two whole notes, each with a circled 'a' below it.

③

Handwritten musical notation for the fourth system of '8(B)'. It features a treble clef and a circled '3' above the staff. The melody continues on a single staff with a slur over the first two measures. The bass staff contains two whole notes, each with a circled 'a' below it.



5

Handwritten musical notation for system 5, measures 1-3. The system consists of two staves. The upper staff is in treble clef with a key signature of two flats (B-flat and E-flat). The notes are: M1: B4, A4, G4; M2: F4, E4, D4; M3: C4, B3, A3. The lower staff is in bass clef with a key signature of two flats. The notes are: M1: B3, A3, G3; M2: F3, E3, D3; M3: C3, B2, A2. A large slur covers the entire system.

Two empty musical staves.

Handwritten musical notation for system 5, measures 4-6. The system consists of two staves. The upper staff is in treble clef with a key signature of two flats. The notes are: M4: B4, A4, G4; M5: F4, E4, D4; M6: C4, B3, A3. The lower staff is in bass clef with a key signature of two flats. The notes are: M4: B3, A3, G3; M5: F3, E3, D3; M6: C3, B2, A2. A large slur covers the entire system.

Two empty musical staves.

6

Handwritten musical notation for system 6, measures 1-3. The system consists of two staves. The upper staff is in treble clef with a key signature of two flats. The notes are: M1: B4, A4, G4; M2: F4, E4, D4; M3: C4, B3, A3. The lower staff is in bass clef with a key signature of two flats. The notes are: M1: B3, A3, G3; M2: F3, E3, D3; M3: C3, B2, A2. A large slur covers the entire system.

Two empty musical staves.

Handwritten musical notation for system 6, measures 4-6. The system consists of two staves. The upper staff is in treble clef with a key signature of two flats. The notes are: M4: B4, A4, G4; M5: F4, E4, D4; M6: C4, B3, A3. The lower staff is in bass clef with a key signature of two flats. The notes are: M4: B3, A3, G3; M5: F3, E3, D3; M6: C3, B2, A2. A large slur covers the entire system.

7

8

9

⑨

⑩

Handwritten musical notation for measures 40 and 41. Measure 40 shows a treble clef with a whole note chord (F#, A, C, E) and a bass clef with a whole note chord (F#, A, C, E). Measure 41 shows a treble clef with a whole note chord (F#, A, C, E) and a bass clef with a whole note chord (F#, A, C, E).

Handwritten musical notation for measures 42 and 43. Measure 42 shows a treble clef with a whole note chord (F#, A, C, E) and a bass clef with a whole note chord (F#, A, C, E). Measure 43 shows a treble clef with a whole note chord (F#, A, C, E) and a bass clef with a whole note chord (F#, A, C, E).

Handwritten musical notation for measures 44 and 45. Measure 44 shows a treble clef with a whole note chord (F#, A, C, E) and a bass clef with a whole note chord (F#, A, C, E). Measure 45 shows a treble clef with a whole note chord (F#, A, C, E) and a bass clef with a whole note chord (F#, A, C, E).

Handwritten musical notation for measures 46 and 47. Measure 46 shows a treble clef with a whole note chord (F#, A, C, E) and a bass clef with a whole note chord (F#, A, C, E). Measure 47 shows a treble clef with a whole note chord (F#, A, C, E) and a bass clef with a whole note chord (F#, A, C, E).



13

14

15

76

Handwritten musical notation for system 76. The treble staff contains a melodic line with eighth and sixteenth notes, and the bass staff contains a harmonic accompaniment with chords and moving lines.

77

Handwritten musical notation for system 77. The treble staff contains a melodic line with eighth and sixteenth notes, and the bass staff contains a harmonic accompaniment with chords and moving lines.

Handwritten musical notation for system 78. The treble staff contains a melodic line with eighth and sixteenth notes, and the bass staff contains a harmonic accompaniment with chords and moving lines.

Handwritten musical notation for system 79. The treble staff contains a melodic line with eighth and sixteenth notes, and the bass staff contains a harmonic accompaniment with chords and moving lines.

Handwritten musical notation for the first system. The treble staff contains a melodic line with a slur over the first three measures. The bass staff contains accompaniment with chords and some rests.

Handwritten musical notation for the second system. The treble staff continues the melodic line. The bass staff has accompaniment. A circled number '18' is written at the end of the system.

Handwritten musical notation for the third system. The treble staff features a melodic line with a slur. The bass staff has accompaniment with chords.

Handwritten musical notation for the fourth system. The treble staff features a melodic line with a slur. The bass staff has accompaniment with chords. There are some handwritten scribbles at the bottom right of the system.

G. P.