

Choralvariationen

Wien 1960

Adolf Scherbaum  
für gr. Orgel

I.

*Ruhig*

Handwritten musical notation for the first system, measures 1-2. The piece is in 4/4 time, marked *Ruhig* (Calmly). The right hand features a melodic line with eighth notes and quarter notes, while the left hand provides a bass line with quarter notes. A dynamic marking of *p* (piano) is present in the first measure.

Handwritten musical notation for the second system, measures 3-4. The right hand continues the melodic line with eighth notes and quarter notes. The left hand has a bass line with quarter notes.

Handwritten musical notation for the third system, measures 5-6. The right hand continues the melodic line. The left hand has a bass line with quarter notes, including a sharp sign (#) in the second measure.

Handwritten musical notation for the fourth system, measures 7-8. The right hand continues the melodic line. The left hand has a bass line with quarter notes and some slurs.

Handwritten musical notation for the first system, featuring a treble and bass staff with various notes and rests.

Empty musical staves for the first system.

Handwritten musical notation for the second system, featuring a treble and bass staff with various notes and rests.

Empty musical staves for the second system.

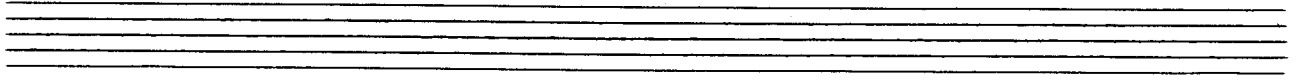
Handwritten musical notation for the third system, featuring a treble and bass staff with various notes and rests.

Empty musical staves for the third system.

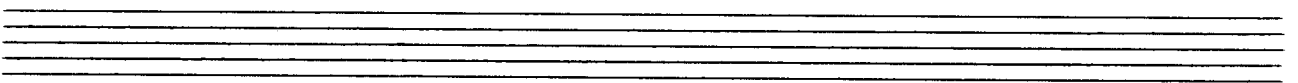
Handwritten musical notation for the fourth system, featuring a treble and bass staff with various notes and rests.

Empty musical staves for the fourth system.

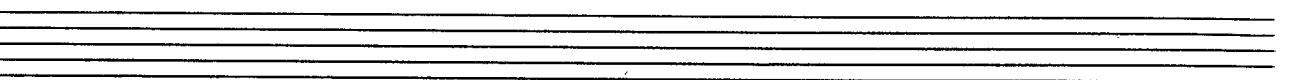
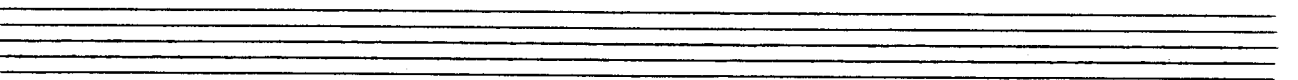
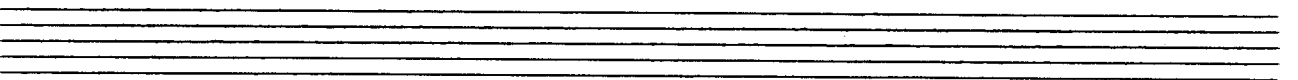
Handwritten musical notation for the first system, featuring a grand staff with treble and bass clefs, a key signature of one sharp (F#), and a common time signature (C). The notation includes complex rhythmic patterns and slurs.

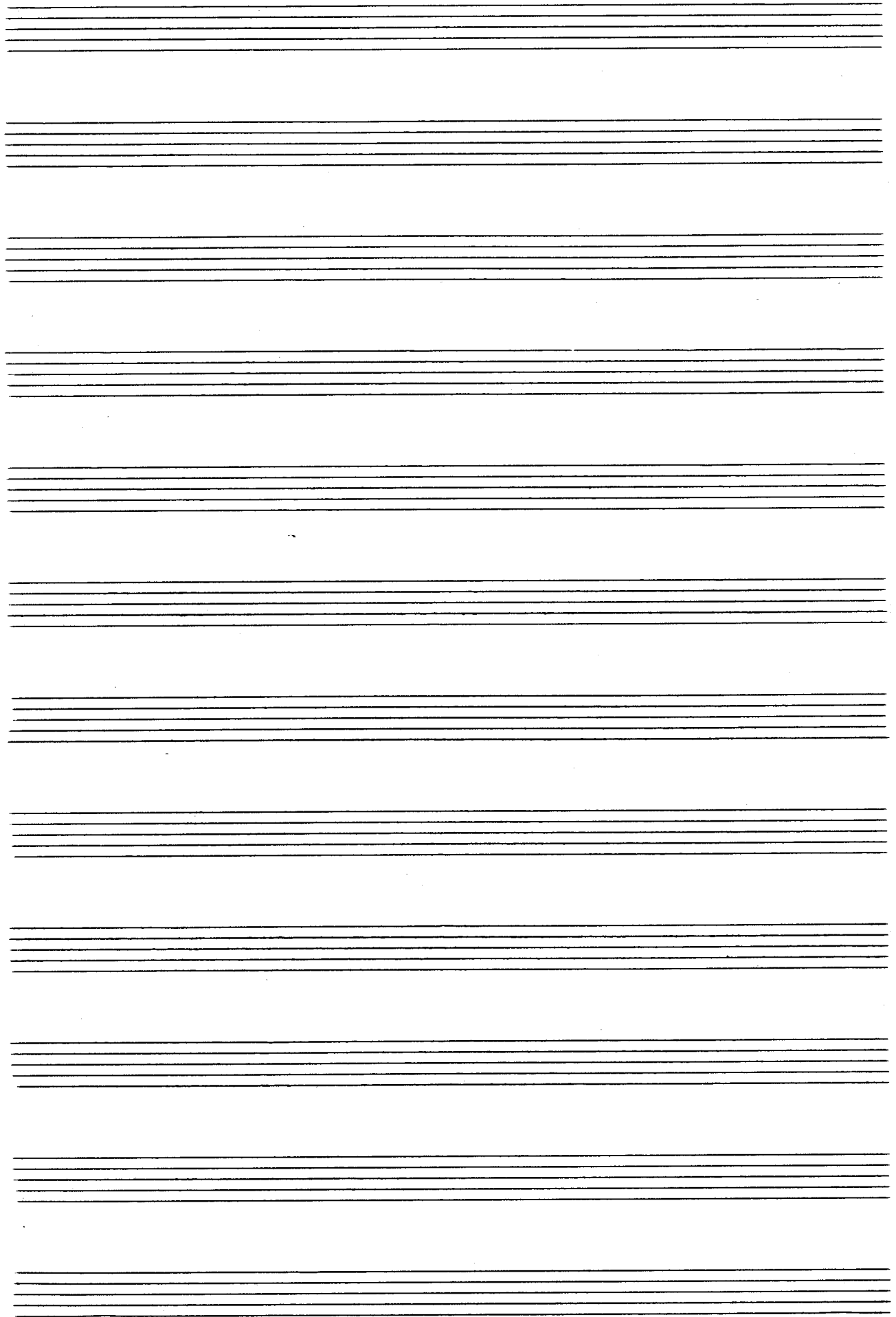


Handwritten musical notation for the second system, continuing the piece with similar complex rhythmic patterns and slurs.



Handwritten musical notation for the third system, ending with a double bar line and a final chord.





# II.

Reclig

①

②

④

Handwritten musical score for the first system, measures 1-5. The right hand features a melodic line with eighth and sixteenth notes, while the left hand provides a harmonic accompaniment with chords and moving lines. A circled number '5' is placed above the final measure of the system.

Handwritten musical score for the second system, measures 6-9. The notation continues with similar melodic and harmonic patterns. A circled number '6' is placed above the first measure of the system.

Handwritten musical score for the third system, measures 10-13. The right hand has a more active melodic line. A circled number '7' is placed above the first measure, and a first ending bracket labeled '1.' spans the final two measures.

Handwritten musical score for the fourth system, measures 14-15. The right hand has a long note with a fermata, and the left hand has a sustained chord. A second ending bracket labeled '2.' is placed above the first measure.



III.

*fließend*

Handwritten musical notation for the first system, featuring a treble and bass staff with complex chordal textures and flowing lines.

Handwritten musical notation for the second system, continuing the complex textures and flowing lines from the first system.

Handwritten musical notation for the third system, including a circled '1' above the staff.

Handwritten musical notation for the fourth system, including a circled '2' above the staff.

Handwritten musical notation for the first system, featuring a treble and bass clef with various notes and rests.

Handwritten musical notation for the second system, including a circled number 3 at the end of the treble staff.

Handwritten musical notation for the third system, including a circled number 4 at the end of the treble staff.

Handwritten musical notation for the fourth system, including a circled number 5 at the end of the treble staff and the text "2te rit...".

# IV.

breit  $\left(\frac{4}{8}\right)$  Maestoso

Handwritten musical notation for the first system, measures 1-3. The piece is in 4/8 time, marked 'breit' and 'Maestoso'. The first measure starts with a forte 'f' dynamic. The right hand features a series of chords and a long, sweeping melodic line. The left hand provides a rhythmic accompaniment with eighth notes and rests.

Handwritten musical notation for the second system, measures 4-7. A circled '1' is placed above the first measure of this system. The musical texture continues with complex chordal structures and melodic lines in both hands.

Handwritten musical notation for the third system, measures 8-10. A circled '2' is placed above the first measure. The notation shows further development of the musical themes, with intricate chordal patterns.

Handwritten musical notation for the fourth system, measures 11-14. Circled numbers '3' and '4' are placed above the first and last measures of this system, respectively. The piece concludes with sustained chords and melodic fragments.

Handwritten musical notation for the first system, measures 1-4. The right hand plays chords and single notes, while the left hand plays chords with some accidentals. A circled '5' is written above the first measure of the right hand.

Handwritten musical notation for the second system, measures 5-8. Similar to the first system, it features chords in both hands with various accidentals and phrasing slurs.

Handwritten musical notation for the third system, measures 9-12. Measure 11 contains a complex chord with multiple sharps. A circled '6' is above measure 9 and a circled '7' is above measure 11.

Handwritten musical notation for the fourth system, measures 13-16. The notation continues with chords and some decorative flourishes in the right hand. A circled '8' is above measure 13.

*molto allegro*

**V.**

*sempre legato*

*mf*

Handwritten musical notation for the first system. The treble clef staff contains a series of eighth notes in a melodic line. The bass clef staff contains a series of chords, primarily triads, with some notes beamed together. The system is marked with a dynamic of *mf* and the instruction *sempre legato*.

Two empty musical staves, one for the treble clef and one for the bass clef, positioned above the second system of notation.

Handwritten musical notation for the second system. The treble clef staff begins with a circled number '1' above the first measure. The notation continues with eighth notes in the treble and chords in the bass. The system concludes with a double bar line.

Two empty musical staves, one for the treble clef and one for the bass clef, positioned above the third system of notation.

Handwritten musical notation for the third system. The treble clef staff begins with a circled number '2' above the first measure. The notation includes eighth notes and a quarter note in the treble, and chords in the bass. The system concludes with a double bar line.

Two empty musical staves, one for the treble clef and one for the bass clef, positioned above the fourth system of notation.

Handwritten musical notation for the fourth system. The treble clef staff contains eighth notes in a melodic line. The bass clef staff contains a series of chords, primarily triads, with some notes beamed together. The system concludes with a double bar line.

3

Handwritten musical notation for system 3, measures 1-3. The system consists of two staves. The upper staff is in treble clef and contains three measures of music with eighth-note patterns. The lower staff is in bass clef and contains three measures of music with chords and some eighth notes. A circled number '3' is positioned above the first measure.

4

Handwritten musical notation for system 4, measures 1-3. The system consists of two staves. The upper staff is in treble clef and contains three measures of music with eighth-note patterns. The lower staff is in bass clef and contains three measures of music with chords and some eighth notes. A circled number '4' is positioned above the end of the system.

5

Handwritten musical notation for system 5, measures 1-4. The system consists of two staves. The upper staff is in treble clef and contains four measures of music with eighth-note patterns. The lower staff is in bass clef and contains four measures of music with chords and some eighth notes. A circled number '5' is positioned above the end of the system.

6

Handwritten musical notation for system 6, measures 1-4. The system consists of two staves. The upper staff is in treble clef and contains four measures of music with eighth-note patterns. The lower staff is in bass clef and contains four measures of music with chords and some eighth notes. A circled number '6' is positioned above the end of the system.

VI

Ruhig (6/8) flüchtig

Handwritten musical notation for the first system, featuring a treble and bass clef with a 3/4 time signature and a key signature of one sharp (F#). The notation includes a melodic line in the treble and a bass line with a circled 'P' dynamic marking. The piece is titled 'Ruhig (6/8) flüchtig'.

Handwritten musical notation for the second system, continuing the piece with a treble and bass clef. The notation includes a melodic line in the treble and a bass line with a circled 'P' dynamic marking.

Handwritten musical notation for the third system, continuing the piece with a treble and bass clef. The notation includes a melodic line in the treble and a bass line with a circled 'P' dynamic marking.

2

Handwritten musical score for the first system, measures 4 and 9. The music is written on two staves (treble and bass clef) with a key signature of one sharp (F#). The notation includes various rhythmic values and accidentals.

Handwritten musical score for the second system, measures 17 and 27. The music continues on two staves with a key signature of one sharp. A sharp sign (#) is visible above the staff in the second measure.

3

Handwritten musical score for the third system, measures 37 and 47. The music is written on two staves with a key signature of one sharp. The notation includes various rhythmic values and accidentals.

( ad. libitum )

Anhang →

Handwritten musical score for the fourth system, measures 57 and 67. The music is written on two staves with a key signature of one sharp. The notation includes various rhythmic values and accidentals.

Vielleicht klingt die Musik altertümlich,  
 aber in einer Zeit der Restlosigkeit,  
 Gemeinheit und Grausamkeiten ist diese  
 Musik für mich eine Insel der  
 Entspannung und  
 Ruhe.



VII. (Anhang)

Moderato

roll. Werke

R.H.  
F. Pedal  
L.H.

The first system of the handwritten musical score consists of three staves. The top staff is in treble clef and contains a melodic line with eighth and sixteenth notes, often beamed together. The middle staff is in alto clef and contains a line with whole and half notes, including a sharp sign. The bottom staff is in bass clef and contains a bass line with eighth and sixteenth notes, similar to the top staff. A large bracket on the left side groups the three staves. A circled number '8' is located in the top right corner of the system.

The second system of the handwritten musical score consists of three staves. The top staff is in treble clef and contains a melodic line with eighth and sixteenth notes, often beamed together. The middle staff is in alto clef and contains a line with whole and half notes, including a sharp sign. The bottom staff is in bass clef and contains a bass line with eighth and sixteenth notes, similar to the top staff. A large bracket on the left side groups the three staves.

The third system of the handwritten musical score consists of three staves. The top staff is in treble clef and contains a melodic line with eighth and sixteenth notes, often beamed together. The middle staff is in alto clef and contains a line with whole and half notes, including a sharp sign. The bottom staff is in bass clef and contains a bass line with eighth and sixteenth notes, similar to the top staff. A large bracket on the left side groups the three staves.

T6

Handwritten musical score for the first system, consisting of three staves. The top staff is in treble clef, the middle in bass clef, and the bottom in bass clef. The music features complex rhythmic patterns, including sixteenth and thirty-second notes, and rests. A circled 'C' is located at the end of the system.

Handwritten musical score for the second system, consisting of three staves. The top staff is in treble clef, the middle in bass clef, and the bottom in bass clef. The music features complex rhythmic patterns, including sixteenth and thirty-second notes, and rests.

Handwritten musical score for the third system, consisting of three staves. The top staff is in treble clef, the middle in bass clef, and the bottom in bass clef. The music features complex rhythmic patterns, including sixteenth and thirty-second notes, and rests.

Handwritten musical score for the first system. It consists of three staves. The top staff is in treble clef and contains a melodic line with eighth and sixteenth notes. The two bottom staves are in bass clef and contain accompaniment with chords and moving lines. A circled 'P' is at the end of the first staff.

*qu. rit.*

Handwritten musical score for the second system. It is labeled 'R.H.' (Right Hand), 'L.H.' (Left Hand), and 'F. Ped.' (Foot Pedal). The 'R.H.' staff is in treble clef with a melodic line. The 'L.H.' staff is in bass clef with chords, including a sharp sign. The 'F. Ped.' staff is in bass clef with a single note. A large brace spans across the bottom two staves.

Handwritten musical score for the third system. It features a treble clef staff with a melodic line, a bass clef staff with chords, and a pedal point staff with a single note. The text 'lunge' is written next to the treble staff. A large scribble is present in the middle of the system. The text '1960 A. Scherbaum' is written in the right margin.