

Meßlieder und
Choralvariationen
für gr. Orgel
August 1960 Wien
Adolf Scherbaum

Notenheft

Meßlieder

für gr. Orgel

Wien August 1860

Adolf Scherbaum

Kyrie.

Hier liegt vor deiner Majestät

Handwritten musical score for the first system. It consists of two staves: a treble clef staff on top and a bass clef staff on the bottom. The music is written in a key with one sharp (F#) and a common time signature (C). The first staff contains a melodic line with several notes, including a half note G4, a quarter note A4, and a quarter note B4. The second staff contains a bass line with notes like G3, F#3, and E3. There are various accidentals and phrasing slurs throughout the system.

Kyrie

Handwritten musical score for the second system. It features a treble clef staff and a bass clef staff. The time signature is common time (C). The music includes a variety of note values and accidentals, such as a half note G4 in the treble and a bass line with notes like G3, F#3, and E3. There are also some dynamic markings and phrasing slurs.

Handwritten musical score for the third system. It consists of two staves: a treble clef staff and a bass clef staff. The music is written in a key with one sharp (F#) and a common time signature (C). The first staff contains a melodic line with notes like G4, A4, and B4. The second staff contains a bass line with notes like G3, F#3, and E3. There are various accidentals and phrasing slurs throughout the system.

Handwritten musical score for the fourth system. It consists of two staves: a treble clef staff and a bass clef staff. The music is written in a key with one sharp (F#) and a common time signature (C). The first staff contains a melodic line with notes like G4, A4, and B4. The second staff contains a bass line with notes like G3, F#3, and E3. There are various accidentals and phrasing slurs throughout the system.

Handwritten musical score for the fifth system. It consists of two staves: a treble clef staff and a bass clef staff. The music is written in a key with one sharp (F#) and a common time signature (C). The first staff contains a melodic line with notes like G4, A4, and B4. The second staff contains a bass line with notes like G3, F#3, and E3. There are various accidentals and phrasing slurs throughout the system.

Gloria.

Handwritten musical notation for the first system. The top staff is a treble clef with a melodic line. The bottom staff is a bass clef with a harmonic accompaniment. The key signature has one flat (B-flat). The notation includes various note values, rests, and dynamic markings.

Handwritten musical notation for the second system. The top staff continues the melodic line with some notes circled. The bottom staff continues the harmonic accompaniment. The notation includes various note values, rests, and dynamic markings.

Handwritten musical notation for the third system. The top staff continues the melodic line. The bottom staff continues the harmonic accompaniment. The notation includes various note values, rests, and dynamic markings.

Graupelium

Handwritten musical notation for the first system. The top staff is in treble clef with a common time signature 'C'. The bottom staff is in bass clef. The music features a melodic line in the right hand and a harmonic accompaniment in the left hand, with various note values and rests.

Handwritten musical notation for the second system. The notation continues from the first system, showing the melodic and harmonic development in both staves.

Handwritten musical notation for the third system. The piece continues with the same melodic and harmonic structure.

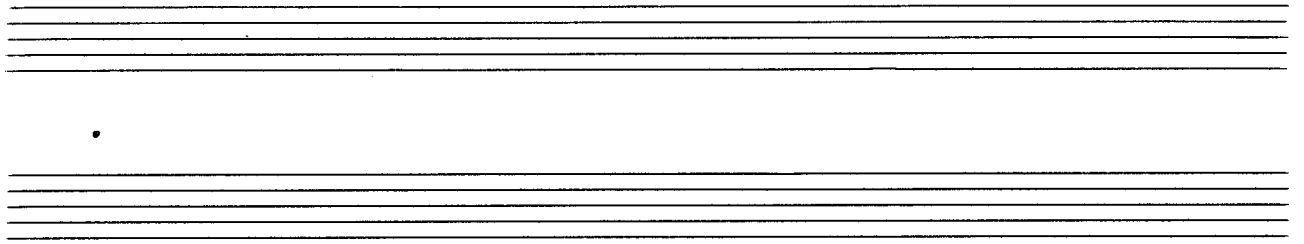
Handwritten musical notation for the fourth system, concluding the piece with a double bar line at the end of the right staff.

Kredo

Handwritten musical notation for the first system. It consists of two staves. The upper staff is in treble clef and contains a melodic line with various note values and rests, including a sharp sign. The lower staff is in bass clef and contains a bass line with notes and rests. A large slur encompasses both staves across the entire system.

Handwritten musical notation for the second system. It consists of two staves. The upper staff is in treble clef and contains a melodic line with various note values and rests, including a sharp sign. The lower staff is in bass clef and contains a bass line with notes and rests. A large slur encompasses both staves across the entire system.

Handwritten musical notation for the third system. It consists of two staves. The upper staff is in treble clef and contains a melodic line with various note values and rests, including a sharp sign. The lower staff is in bass clef and contains a bass line with notes and rests. A large slur encompasses both staves across the entire system.



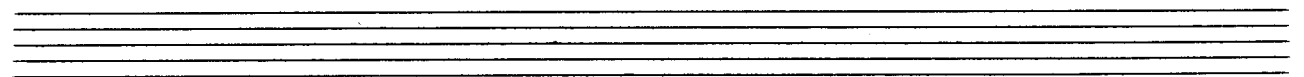
Handwritten musical score for the first system, featuring a treble and bass clef with various notes and accidentals.

Kredo

Handwritten musical score for the second system, including a common time signature 'C' and a key signature change.

Handwritten musical score for the third system, showing complex rhythmic patterns and accidentals.

Handwritten musical score for the fourth system, concluding with a double bar line.



Offertorium

Handwritten musical notation for the first system. The top staff is in treble clef with a key signature of one sharp (F#) and a time signature of 4/4. The bottom staff is in bass clef. The music features a melodic line in the right hand with various note values and rests, and a harmonic accompaniment in the left hand. A large slur covers the first two measures of the right hand.

Handwritten musical notation for the second system. The notation continues from the first system, showing further development of the melodic and harmonic themes. The right hand continues with a melodic line, and the left hand provides accompaniment with chords and moving lines.

Handwritten musical notation for the third system. This system includes a double bar line with repeat dots on both sides, indicating a repeated section. The melodic line in the right hand is prominent, with some notes beamed together.

Handwritten musical notation for the fourth system. The music concludes with a final melodic phrase in the right hand and a sustained chord in the left hand. A large slur is present over the first measure of the right hand.

Handwritten musical notation for the first system. The treble clef staff contains a melodic line with a long slur over the first four measures. The bass clef staff contains a supporting bass line with a long slur over the first four measures. The key signature has one sharp (F#).

offertorium

Handwritten musical notation for the second system. The treble clef staff continues the melodic line. The bass clef staff continues the supporting bass line. The key signature has one sharp (F#).

Handwritten musical notation for the third system. The treble clef staff continues the melodic line. The bass clef staff continues the supporting bass line, featuring more complex rhythmic patterns. The key signature has one sharp (F#).

Handwritten musical notation for the fourth system. The treble clef staff contains a repeat sign. The bass clef staff continues the supporting bass line. The key signature has one sharp (F#).

Handwritten musical notation for the fifth system. The treble clef staff continues the melodic line. The bass clef staff continues the supporting bass line. The piece concludes with a double bar line. The key signature has one sharp (F#).

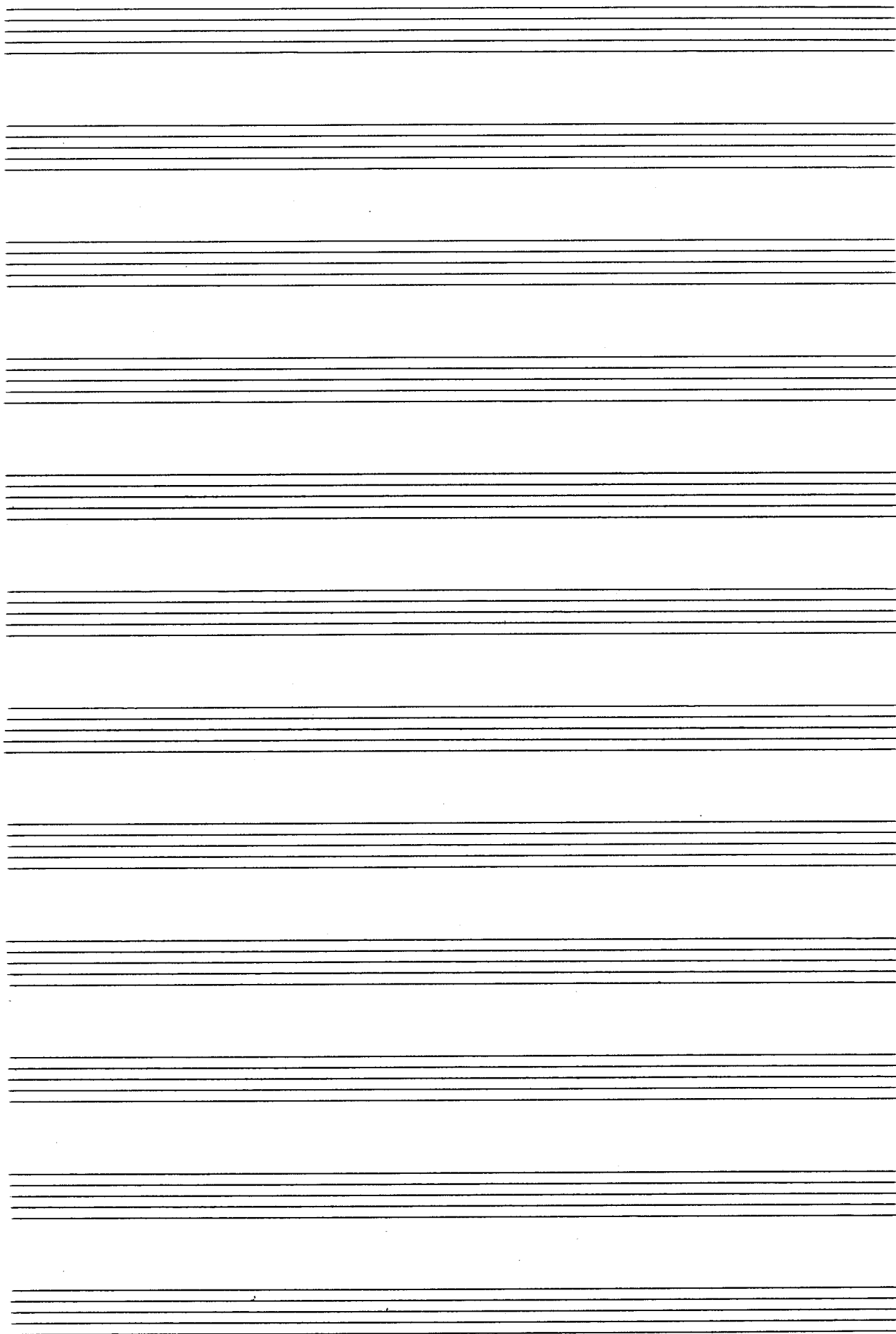
Sanktus

Handwritten musical notation for the first system. It consists of two staves: a treble clef staff and a bass clef staff. The treble staff contains a melodic line with various note values, including quarter and eighth notes, and rests. The bass staff contains a harmonic accompaniment with chords and moving lines. The system concludes with a double bar line and repeat dots.

Handwritten musical notation for the second system. It consists of two staves: a treble clef staff and a bass clef staff. The treble staff continues the melodic line. The bass staff features more complex harmonic textures, including some chords with multiple sharps and accidentals. The system concludes with a double bar line and repeat dots.

Handwritten musical notation for the third system. It consists of two staves: a treble clef staff and a bass clef staff. The treble staff continues the melodic line. The bass staff continues the harmonic accompaniment. The system concludes with a double bar line and repeat dots.

Nach der Wandlung



Agnus Dei

Handwritten musical notation for the first system of 'Agnus Dei'. It consists of two staves: a treble clef staff and a bass clef staff. The treble staff contains a melodic line with various note values and rests, including a large slur over the first four measures. The bass staff contains a harmonic accompaniment with chords and moving lines, also featuring a large slur over the first four measures. The key signature has one flat (B-flat).

Handwritten musical notation for the second system of 'Agnus Dei'. It consists of two staves: a treble clef staff and a bass clef staff. The treble staff continues the melodic line with a large slur over the first four measures. The bass staff continues the harmonic accompaniment with a large slur over the first four measures. The key signature has one flat (B-flat).

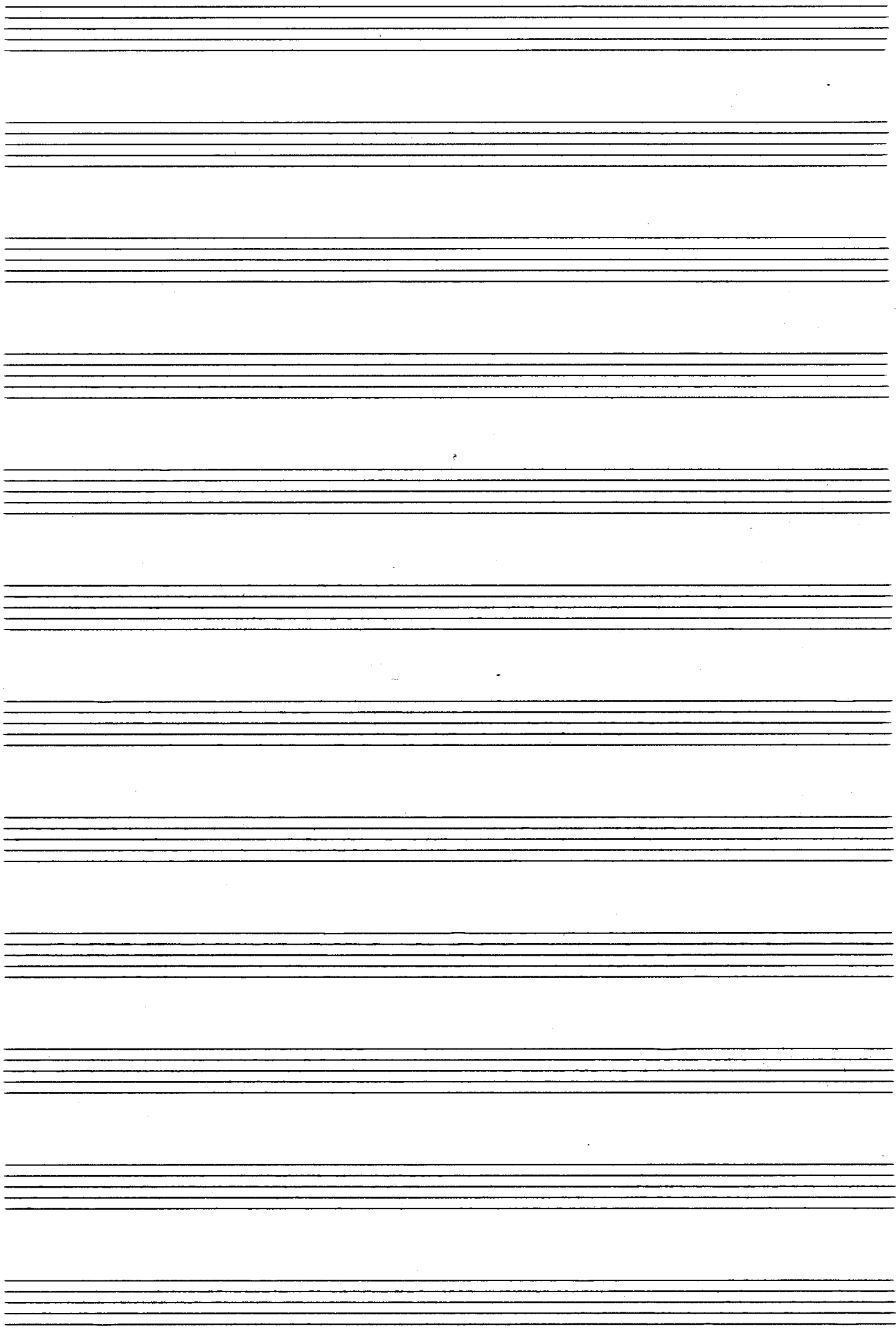
Handwritten musical notation for the third system of 'Agnus Dei'. It consists of two staves: a treble clef staff and a bass clef staff. The treble staff continues the melodic line with a large slur over the first four measures. The bass staff continues the harmonic accompaniment with a large slur over the first four measures. The key signature has one flat (B-flat).

Handwritten musical notation for the fourth system of 'Agnus Dei'. It consists of two staves: a treble clef staff and a bass clef staff. The treble staff continues the melodic line with a large slur over the first four measures. The bass staff continues the harmonic accompaniment with a large slur over the first four measures. The key signature has one flat (B-flat).

Handwritten musical notation for the first system. It consists of two staves. The upper staff is in treble clef and contains a melodic line with notes and accidentals (flats and naturals) connected by slurs. The lower staff is in bass clef and contains a bass line with notes and accidentals, also connected by slurs. The notation is handwritten and appears to be a sketch or a first draft.

Handwritten musical notation for the second system. It consists of two staves. The upper staff is in treble clef and contains a few notes with accidentals. The lower staff is in bass clef and contains a few notes with accidentals. The system ends with a double bar line, indicating the end of a phrase or section.

A series of seven empty musical staves, each consisting of five horizontal lines, arranged vertically. These staves are blank and appear to be part of a larger musical score.



Choral mit
Variationen

Wien August 1960

Adolf Scherbaum
fr. Orgel

Choral.

Handwritten musical notation for the first system. It consists of two staves. The upper staff is in treble clef with a key signature of three flats (B-flat, E-flat, A-flat) and a common time signature. It contains a melodic line with a series of eighth and quarter notes, some beamed together, and a long slur over the first five measures. The lower staff is in bass clef with the same key signature and time signature, containing a single bass note in the first measure followed by rests.

Handwritten musical notation for the second system. It consists of two staves. The upper staff continues the melodic line from the first system, with a slur over the first two measures. The lower staff contains rests.

Handwritten musical notation for the third system. It consists of two staves. The upper staff continues the melodic line, with a slur over the first two measures. The lower staff contains rests.

Handwritten musical notation for the fourth system. It consists of two staves. The upper staff continues the melodic line, with a slur over the first two measures. The lower staff contains rests. The system ends with a double bar line.

I.

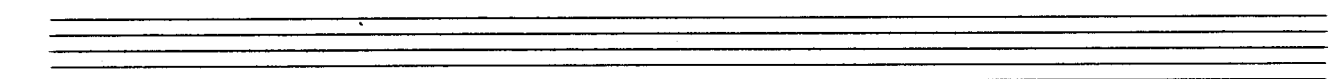
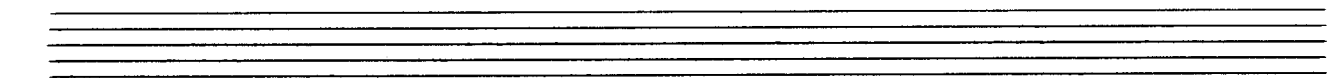
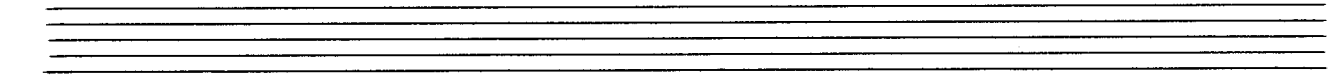
Handwritten musical notation for the first system. It consists of two staves: a treble clef staff and a bass clef staff. The treble staff contains a melodic line with a long slur over the first two measures and another slur over the last two measures. The bass staff contains a complex accompaniment with many beamed notes and slurs. A piano (*pp*) dynamic marking is present in the first measure of the treble staff.

Handwritten musical notation for the second system, continuing the melodic and accompanimental lines from the first system. It features similar slurs and rhythmic patterns in both staves.

Handwritten musical notation for the third system, showing further development of the musical themes. The melodic line in the treble staff continues with slurs, and the bass staff accompaniment remains intricate.

Handwritten musical notation for the fourth system, concluding the piece with a double bar line. The melodic line ends with a final note, and the accompaniment concludes with a few final notes.

sehr ruhig



Handwritten musical notation for the first system, featuring a treble and bass staff with complex chordal textures and melodic lines.

Handwritten musical notation for the second system, including a circled number '3' at the end of the staff.

Handwritten musical notation for the third system, showing a continuation of the complex textures.

Handwritten musical notation for the fourth system, ending with a circled number '4'.

rit.

III .

Adolf Scherbaum (jung)

Handwritten musical notation for the first system. It consists of two staves: a treble clef staff and a bass clef staff. The treble staff begins with a treble clef, a key signature of two flats (B-flat and E-flat), and a 4/4 time signature. A circled 'P' is written below the treble staff. The music includes a series of eighth and sixteenth notes, some beamed together, and rests. A long slur covers the entire system. The bass staff contains mostly whole and half notes with some beaming.

Empty musical staves.

Handwritten musical notation for the second system. It consists of two staves: a treble clef staff and a bass clef staff. The treble staff continues with eighth and sixteenth notes, some beamed together, and rests. A long slur covers the entire system. The bass staff contains mostly whole and half notes with some beaming.

Empty musical staves.

Handwritten musical notation for the third system. It consists of two staves: a treble clef staff and a bass clef staff. The treble staff continues with eighth and sixteenth notes, some beamed together, and rests. A long slur covers the entire system. The bass staff contains mostly whole and half notes with some beaming.

Empty musical staves.

Handwritten musical notation for the fourth system. It consists of two staves: a treble clef staff and a bass clef staff. The treble staff begins with a treble clef, a key signature of two flats, and a 4/4 time signature. The music includes a few notes and rests. A double bar line is present at the end of the system. A long slur covers the entire system.

III *c* (auch als Finale) dann dazu
 (bei ersten 8 Takte Fußpedale)
 breit (ausspielen)

(nur bei Finale
 ersten
 8 Takte dazu)

1

2

2

letzte + ev. rit

Fine

3

Handwritten musical score for the first system. The treble clef part contains a melodic line with notes and accidentals (flats and naturals). The bass clef part contains a chordal accompaniment with several flats. A circled number '3' is written at the end of the system. A handwritten note in a speech bubble says 'als Schlussproben rit mit Schlussakkord anschalten'.

als Schlussproben rit mit Schlussakkord anschalten

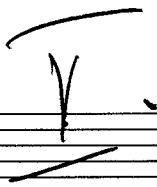
Handwritten musical score for the second system. The treble clef part starts with a sharp sign and contains a melodic line. The bass clef part contains a melodic line with many notes and accidentals.

Handwritten musical score for the third system. The treble clef part has a circled number '4' above it and contains a melodic line. The bass clef part contains a melodic line with many notes and accidentals.

Handwritten musical score for the fourth system. The treble clef part contains a melodic line. The bass clef part contains a melodic line with many notes and accidentals.

D.C.

Allegro



Handwritten musical score for the first system, measures 5-8. Measure 5 is circled and labeled "FIN". The system includes a treble and bass staff with various notes and accidentals.

Handwritten musical score for the second system, measures 6-9. Measure 6 is circled. The system includes a treble and bass staff with various notes and accidentals.

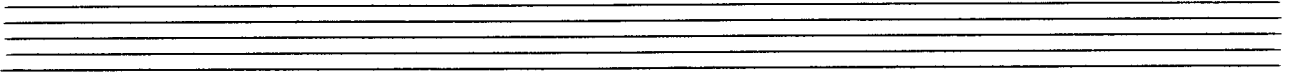
Handwritten musical score for the third system, measures 8-11. Measure 11 is circled. The system includes a treble and bass staff with various notes and accidentals.

Handwritten musical score for the fourth system, measures 9-12. Measure 12 is circled. The system includes a treble and bass staff with various notes and accidentals.

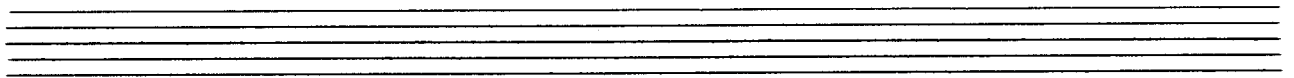
VI.

breit

Handwritten musical notation for the first system. It consists of a treble clef staff and a bass clef staff. The treble staff contains notes with accidentals (sharps and naturals) and stems. The bass staff contains notes with stems. There are some handwritten annotations like '# 4' and '5' near the beginning.



Handwritten musical notation for the second system. It features a treble clef staff and a bass clef staff. The treble staff has notes with stems and a fermata symbol. The bass staff has notes with stems. There are some handwritten annotations like '# 8' and 'C'.



Handwritten musical notation for the third system. It features a treble clef staff and a bass clef staff. The treble staff has a complex melodic line with many notes, slurs, and accidentals. The bass staff has notes with stems. There are some handwritten annotations like 'b' and 'C'.

Handwritten musical notation for the fourth system. It features a treble clef staff and a bass clef staff. The treble staff has a complex melodic line with many notes, slurs, and accidentals. The bass staff has notes with stems. There are some handwritten annotations like '# 10' and 'b'.

Handwritten musical notation for the first system, featuring a treble and bass clef with various notes and accidentals.

Handwritten musical notation for the second system, continuing the piece with similar notation.

Handwritten musical notation for the third system, ending with a double bar line.

VII. ist gleich
 IV. (aber sehr zügig)
 feierlich.

dal
 (IV) Variation
 al Fine

1960 A. Scherbaum
 Wien August