

Variationen über
einen Choral

für große Orgel

(oder Elektronenorgel)

1960 (Adolf Scherbaum)

(Zur Erinnerung an meine Genesung
1953 im Spital in Wien)

wo ich meinem Choral auf der
Orgel in Anwesenheit von vielen
geistlichen Schwestern und der
Mutter Oberin auf der Kirchenorgel
(3. Bezirk (Hauptstraße) gespielt
und improvisiert habe).

August Wien 1960

Adolf
Scherbaum

Choral

oder breit (Adagio)

Herr - gib uns - Kraft win ~~...~~

①

Sind ein - sam in mitten VIE -

②

- len Wir sind ein - sam in - mitten vieler.

VIE

sehr ruhig

1

2.

sehr ruhig

Handwritten musical notation for the first system, measures 1-4. The right hand has a melodic line with slurs and ties, and the left hand has a bass line. A circled '1' is at the end of the system.

Handwritten musical notation for the second system, measures 5-8. The right hand continues the melodic line, and the left hand continues the bass line. A circled '2' is at the end of the system.

Handwritten musical notation for the third system, measures 9-12. The right hand continues the melodic line, and the left hand continues the bass line. A circled '3' is at the end of the system.

Handwritten musical notation for the fourth system, measures 13-16. The right hand continues the melodic line, and the left hand continues the bass line. A circled '4' is at the end of the system.

Handwritten musical notation for the first system, measures 1-4. The system consists of two staves. The upper staff is in treble clef and contains a melodic line with a slur over the first four measures. The lower staff is in bass clef and contains a bass line. A circled number '5' is written in the top right corner of the system.

Handwritten musical notation for the second system, measures 5-8. The system consists of two staves. The upper staff is in treble clef and contains a melodic line with a slur over the first four measures. The lower staff is in bass clef and contains a bass line with a slur over the first four measures. A circled number '6' is written in the top right corner of the system.

Handwritten musical notation for the third system, measures 9-12. The system consists of two staves. The upper staff is in treble clef and contains a melodic line with a slur over the first four measures. The lower staff is in bass clef and contains a bass line with a slur over the first four measures. A circled number '6' is written in the top right corner of the system.

Four empty musical staves, each consisting of five lines, arranged vertically.

breit (Moderato) 3.

Empty musical staves.

Empty musical staves.

Handwritten musical score for the first system. It consists of three staves: treble, alto, and bass. The treble staff contains a melodic line with eighth and sixteenth notes, some beamed together. The alto staff has a similar melodic line with some rests. The bass staff provides a simple harmonic accompaniment with quarter and eighth notes. A large slur covers the entire system.

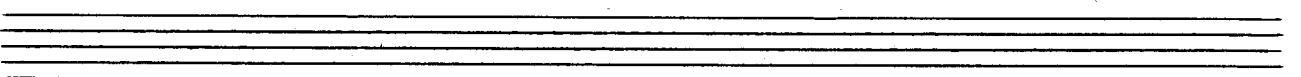
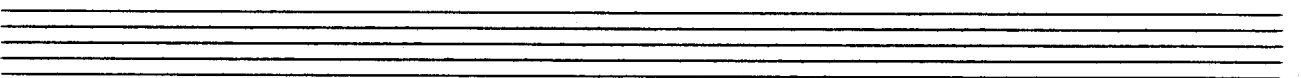
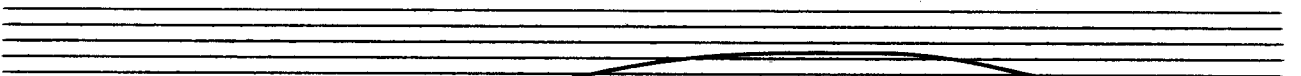
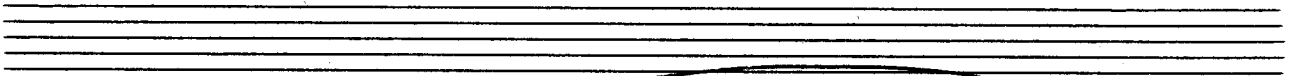
Handwritten musical score for the second system. It consists of three staves: treble, alto, and bass. The treble staff features a melodic line with many accidentals (sharps and naturals). The alto and bass staves provide harmonic support with various note values and accidentals. A circled measure number '4' is written at the end of the system.

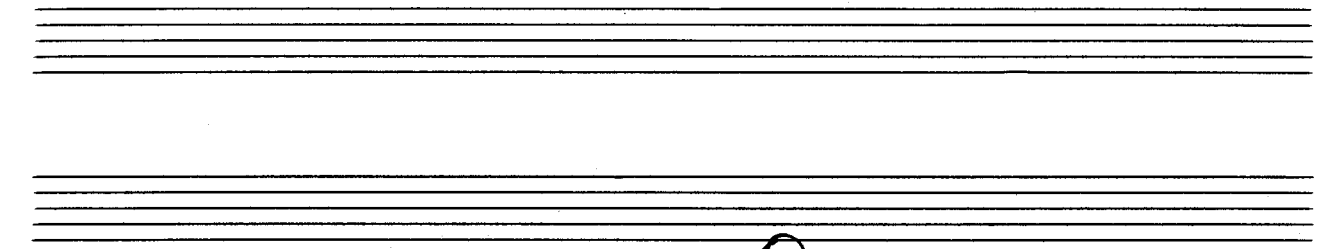
Handwritten musical score for the third system. It consists of three staves: treble, alto, and bass. The treble staff has a melodic line with many accidentals. The alto and bass staves provide harmonic support. A boxed measure number '5' is written at the end of the system.



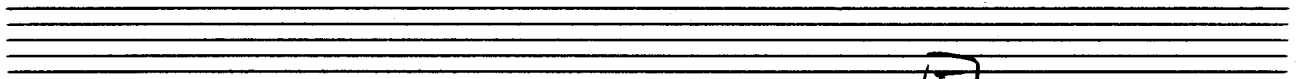
sehr ruhig

zart und ruhig.





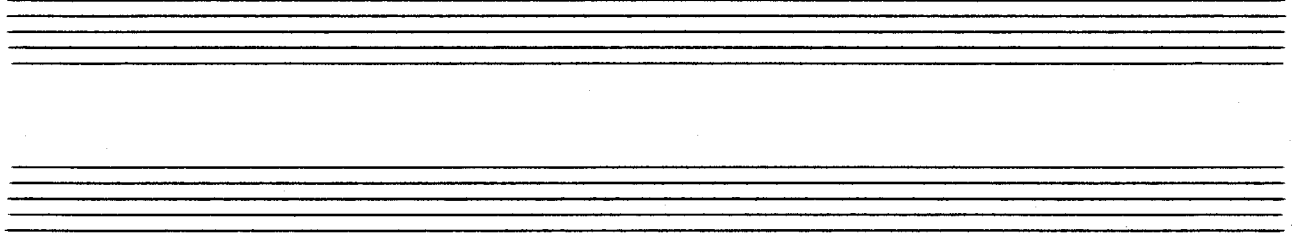
Handwritten musical notation for the first system. It consists of two staves. The upper staff is in treble clef with a 6/4 time signature. The lower staff is in bass clef. The music features a melodic line in the upper staff with a circled measure number '4' above it, and a bass line in the lower staff. A dynamic marking 'pp' is written above the first measure. The system ends with a double bar line.



Handwritten musical notation for the second system. It consists of two staves. The upper staff is in treble clef and the lower staff is in bass clef. The music continues with a melodic line in the upper staff and a bass line in the lower staff. A circled measure number '5' is written above the second measure. The system ends with a double bar line.



Handwritten musical notation for the third system. It consists of two staves. The upper staff is in treble clef and the lower staff is in bass clef. The music features a melodic line in the upper staff and a bass line in the lower staff. A circled measure number '6' is written above the second measure. The system ends with a double bar line.



5.

breit (Moderato)

Handwritten musical notation for the first system. It consists of a treble clef and a bass clef. The time signature is 4/4. The melody is written in the treble clef and the bass line in the bass clef. A large slur covers the entire system. The lyrics "Herr gib uns KRAFT" are written below the notes.

f Herr — ~~gib~~ gib uns — K R A F T

Handwritten musical notation for the second system. It continues the melody from the first system. It features a treble clef and a bass clef. A large slur covers the system. A circled number "1" is at the end of the system.

Handwritten musical notation for the third system. It continues the melody. It features a treble clef and a bass clef. A large slur covers the system. A circled number "2" is at the end of the system.

Handwritten musical notation for the first system. The treble clef staff contains a melodic line with a key signature of one sharp (F#). The bass clef staff contains accompaniment with notes and rests. A large slur covers the entire system.

Handwritten musical notation for the second system, similar to the first. A circled '3' is written at the end of the treble staff. The notation includes a treble clef staff with a melodic line and a bass clef staff with accompaniment.

Handwritten musical notation for the third system. The treble clef staff shows a melodic line with a key signature of one sharp. The bass clef staff contains accompaniment. A large slur covers the system.

Handwritten musical notation for the fourth system. The treble clef staff contains a melodic line. The bass clef staff contains accompaniment. The system ends with a double bar line and a smiley face. The text "2te + ev. rit..." is written in the bass staff area.

6.

VIVACE

ff

2

3 4

7.

MAESTOSO

1

Herr gib UNS Kraft

2 frei

3

Herr gib UNS Kraft

frei

4

5

Win sind ein — SAM

Herr gib uns Kraft

6

7

8

9

frei

10

11

ad lib. Oktave höher

12

13

8.

sehr ruhig (bei Elektronischen Orgel) *allegro* (*cresc.*)

Handwritten musical notation for the first system, measures 1-2. The score is in G major (one sharp) and 6/4 time. The right hand features a melodic line with eighth notes and slurs, while the left hand provides a bass line with dotted notes and rests. A large slur covers both staves across the two measures.

Handwritten musical notation for the second system, measures 3-4. The notation continues from the first system, showing the melodic and bass lines with slurs and dynamic markings.

Handwritten musical notation for the third system, measures 5-6. The notation continues, ending with a circled number 1. The right hand has a dynamic marking of "mf".

Handwritten musical score for the first system, measures 1-2. The right hand has a melodic line with a slur and a circled '2' at the end. The left hand has chords with a '4/8' time signature and a 'pp' dynamic marking.

Handwritten musical score for the second system, measures 3-4. The right hand continues the melodic line with a slur and a circled '3' at the end. The left hand has chords with a '4/8' time signature.

Handwritten musical score for the third system, measures 5-6. The right hand has a more complex melodic line with a slur and a circled '4' at the end. The left hand has chords with a '4/8' time signature and a 'pp' dynamic marking.

Handwritten musical score for the fourth system, measures 7-8. The right hand has a melodic line with a slur and a circled '5' at the end. The left hand has chords with a '4/8' time signature and a 'pp' dynamic marking. The text "2ct + gv. rit..." is written below the staff.

breit

WIR SIND EIN - SAM IN - MITTEN VIELER

①

②

frei

③

D.C. *al Fine*
 6/4 oder *rubato*

9.

frei (weit)

WIR SIND EIN - SAM

frei

weit

WIR SIND EIN - SAM
Herrn gib UNS KRAFT!

breit (ausdrücklich) nicht schleppen!

rolles Werk

Handwritten musical score for the first system, measures 1-2. The top staff is in treble clef with a melodic line. The middle and bottom staves are in bass clef with accompaniment. A circled '3' is in the top right corner.

Handwritten musical score for the second system, measures 3-4. Similar notation to the first system. A circled '4' is in the top right corner.

Handwritten musical score for the third system, measures 5-6. The system ends with a double bar line and a circled '5'. To the right of the staves are handwritten notes: "lunge A. Sch.", "halten 1960", and "attacca ANHANG! ->". The right side of the system is shaded with diagonal lines.

ANHANG

CHORAL

77

Herr gib uns KRAFT

1

2

WIR SIND

Handwritten musical score for the first system. The treble clef staff contains a melodic line with a key signature of one sharp (F#) and a common time signature. The piano accompaniment is written in a grand staff. The lyrics "IN - SAM" are written below the piano part.

Handwritten musical score for the second system. The treble clef staff continues the melodic line. The piano accompaniment continues. The lyrics "IN - MIT -" are written below the piano part. A circled number "3" is in the top right corner.

Handwritten musical score for the third system. The treble clef staff concludes the melodic line. The piano accompaniment concludes. The lyrics "- TEN VIE -" are written below the piano part.

großes mit

Handwritten musical score for the first system. It consists of a vocal line on a single staff and a three-staff organ accompaniment. The vocal line contains two measures of music with notes and rests. The organ accompaniment includes a treble clef, a key signature of one sharp (F#), and the word "LER" written across the middle staff. The organ part features long, sweeping lines across the staves, indicating sustained notes or glissandi.

lange halten!!

Handwritten musical score for the second system, continuing the organ accompaniment from the first system. It features the same three-staff organ part with long, sweeping lines. The system concludes with a double bar line and a large, dense scribble on the right side of the page.

nach Skizzen von 1953

Wien 1960 D. Stoff Scherbaum

Autmung:

Toccata (über Chora)

10.

Presto

①

Handwritten musical notation for system 1, measures 1-6. The system consists of three staves: a treble clef staff, a grand staff (treble and bass clefs), and a bass clef staff. The time signature is 4/4. The key signature has one sharp (F#). The notation features complex chords and melodic lines in the upper staves, with a bass line in the bottom staff. A circled number 1 is at the end of the system.

②

Handwritten musical notation for system 2, measures 7-12. The system consists of three staves: a treble clef staff, a grand staff, and a bass clef staff. The time signature is 4/4. The key signature has one sharp (F#). The notation continues with complex chords and melodic lines. A circled number 2 is at the end of the system.

③

Handwritten musical notation for system 3, measures 13-18. The system consists of three staves: a treble clef staff, a grand staff, and a bass clef staff. The time signature is 4/4. The key signature has one sharp (F#). The notation continues with complex chords and melodic lines. A circled number 3 is at the end of the system.

4

5

6

Handwritten musical score for the first system. It consists of three staves. The top staff is in treble clef, the middle in alto clef, and the bottom in bass clef. The music is in 3/4 time. The first measure contains a complex chordal texture with a treble clef. The second measure contains a similar texture with an alto clef. The third measure contains a similar texture with a bass clef. The fourth measure contains a similar texture with a treble clef. The fifth measure contains a similar texture with an alto clef. The sixth measure contains a similar texture with a bass clef. The seventh measure contains a similar texture with a treble clef. The eighth measure contains a similar texture with an alto clef. The ninth measure contains a similar texture with a bass clef. The tenth measure contains a similar texture with a treble clef. The eleventh measure contains a similar texture with an alto clef. The twelfth measure contains a similar texture with a bass clef. The system ends with a double bar line.

Handwritten musical score for the second system. It consists of three staves. The top staff is in treble clef, the middle in alto clef, and the bottom in bass clef. The music is in 4/4 time. The first measure contains a complex chordal texture with a treble clef. The second measure contains a similar texture with an alto clef. The third measure contains a similar texture with a bass clef. The fourth measure contains a similar texture with a treble clef. The fifth measure contains a similar texture with an alto clef. The sixth measure contains a similar texture with a bass clef. The seventh measure contains a similar texture with a treble clef. The eighth measure contains a similar texture with an alto clef. The ninth measure contains a similar texture with a bass clef. The tenth measure contains a similar texture with a treble clef. The eleventh measure contains a similar texture with an alto clef. The twelfth measure contains a similar texture with a bass clef. The system ends with a double bar line.

Handwritten musical score for the third system. It consists of three staves. The top staff is in treble clef, the middle in alto clef, and the bottom in bass clef. The music is in 4/4 time. The first measure contains a complex chordal texture with a treble clef. The second measure contains a similar texture with an alto clef. The third measure contains a similar texture with a bass clef. The fourth measure contains a similar texture with a treble clef. The fifth measure contains a similar texture with an alto clef. The sixth measure contains a similar texture with a bass clef. The seventh measure contains a similar texture with a treble clef. The eighth measure contains a similar texture with an alto clef. The ninth measure contains a similar texture with a bass clef. The tenth measure contains a similar texture with a treble clef. The eleventh measure contains a similar texture with an alto clef. The twelfth measure contains a similar texture with a bass clef. The system ends with a double bar line.

Handwritten musical score system 1. It consists of three staves. The top staff is in treble clef and contains a melodic line with eighth notes and slurs. The middle staff is in alto clef and contains a similar melodic line. The bottom staff is in bass clef and contains a simple bass line with two whole notes.

Handwritten musical score system 2. It consists of three staves. The top staff is in treble clef and contains a melodic line with eighth notes and slurs, starting with a flat (b). The middle staff is in alto clef and contains a similar melodic line. The bottom staff is in bass clef and contains a simple bass line with two whole notes. A handwritten '2' and '4' are written in the middle of the system, indicating a 2/4 time signature.

Handwritten musical score system 3. It consists of three staves. The top staff is in treble clef and contains a melodic line with eighth notes and slurs. The middle staff is in alto clef and contains a similar melodic line. The bottom staff is in bass clef and contains a simple bass line with two whole notes. A handwritten '2' and '4' are written in the middle of the system, indicating a 2/4 time signature.

Handwritten musical score for the first system. It consists of a grand staff with treble and bass clefs. The right hand part features a series of chords with a melodic line, and the left hand part features a simple bass line. A 4/4 time signature is present.

Handwritten musical score for the second system. It consists of a grand staff with treble and bass clefs. The right hand part features a series of chords with a melodic line, and the left hand part features a simple bass line. A 4/4 time signature is present, and a 3/4 time signature is also visible.

Handwritten musical score for the third system. It consists of a grand staff with treble and bass clefs. The right hand part features a series of chords with a melodic line, and the left hand part features a simple bass line.

Handwritten musical score for the first system, featuring a grand staff with treble and bass clefs. The right hand contains a complex melodic line with many beamed notes, while the left hand has a simple bass line with few notes.

Handwritten musical score for the second system, similar to the first but with more complex rhythmic patterns in the right hand, including triplets and groups of four notes. The left hand has a few notes with a slur.

Handwritten musical score for the third system, starting with the tempo marking "Moderato". It features a grand staff with complex rhythmic notation, including many beamed notes and slurs. The right hand has a complex melodic line, and the left hand has a bass line with many notes and slurs.