

bitte MATERIAL schonen

9 Teile für  
große Orgel

1961 Wien,

Adolf Scherbaum

(Reg.)

1.

sehr langsam

Handwritten musical notation for the first system. It consists of two staves. The top staff is in treble clef and the bottom staff is in bass clef. The time signature is 4/8, indicated by a '4' over a vertical line and an '8' below it. The dynamic marking 'pp' is written to the left of the first measure. The notation includes various notes, rests, and slurs across two measures.

Handwritten musical notation for the second system, continuing the piece with two staves. The notation includes notes, rests, and slurs across two measures.

Handwritten musical notation for the third system, continuing the piece with two staves. The notation includes notes, rests, and slurs across two measures.

Handwritten musical notation for the first system. The top staff is a treble clef with a whole note G4, a half note A4, and a quarter note B4. The bottom staff is a bass clef with a whole note chord (F4, A3, C4), a half note chord (G3, B2, D3), and a quarter note chord (E3, G2, B2). There are various accidentals and slurs throughout the system.

Handwritten musical notation for the second system. The top staff is a treble clef with a whole note chord (G4, B4, D5), a half note chord (A4, C5, E5), and a quarter note chord (F5, A5, C6). The bottom staff is a bass clef with a whole note chord (F4, A3, C4), a half note chord (G3, B2, D3), and a quarter note chord (E3, G2, B2). There are various accidentals and slurs throughout the system.

Handwritten musical notation for the third system. The top staff is a treble clef with a whole note G4, a half note A4, and a quarter note B4. The bottom staff is a bass clef with a whole note chord (F4, A3, C4), a half note chord (G3, B2, D3), and a quarter note chord (E3, G2, B2). There are various accidentals and slurs throughout the system.

Handwritten musical notation for the fourth system, ending with a double bar line and the word "FIN.". The top staff is a treble clef with a whole note G4, a half note A4, and a quarter note B4. The bottom staff is a bass clef with a whole note chord (F4, A3, C4), a half note chord (G3, B2, D3), and a quarter note chord (E3, G2, B2). There are various accidentals and slurs throughout the system.

II.

*largo*

Handwritten musical notation for the first system. It consists of two staves: a treble clef staff on top and a bass clef staff on the bottom. The treble staff begins with a dynamic marking of *pp*. The music is written in a key with one flat (B-flat major or D minor) and a common time signature. The first measure contains a complex chordal texture with many notes, some marked with accents. The second measure continues this texture. The system concludes with a double bar line.

Handwritten musical notation for the second system. It consists of two staves: a treble clef staff on top and a bass clef staff on the bottom. The treble staff begins with a dynamic marking of *pp*. The music continues from the first system, with similar chordal textures and accidentals. The system concludes with a double bar line.

Handwritten musical notation for the third system. It consists of two staves: a treble clef staff on top and a bass clef staff on the bottom. The treble staff begins with a dynamic marking of *pp*. The music continues from the second system, with similar chordal textures and accidentals. The system concludes with a double bar line.

Handwritten musical notation for the first system. The treble staff contains a melodic line with a slur over the first two measures and a trill-like figure in the third measure. The bass staff contains a bass line with a slur over the first two measures and a trill-like figure in the third measure.

Handwritten musical notation for the second system. The treble staff contains a melodic line with a slur over the first two measures and a trill-like figure in the third measure. The bass staff contains a bass line with a slur over the first two measures and a trill-like figure in the third measure.

Handwritten musical notation for the third system. The treble staff contains a melodic line with a slur over the first two measures and a trill-like figure in the third measure. The bass staff contains a bass line with a slur over the first two measures and a trill-like figure in the third measure.

Handwritten musical notation for the fourth system. The treble staff contains a melodic line with a slur over the first two measures and a trill-like figure in the third measure. The bass staff contains a bass line with a slur over the first two measures and a trill-like figure in the third measure. The system ends with a double bar line and the word "FIN." written above it. A circled "pp" is written below the treble staff in the third measure, and the word "lange" is written below the bass staff in the third measure.

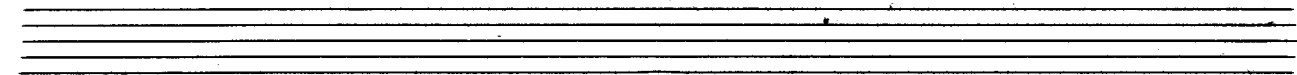
III.

sehr ruhig

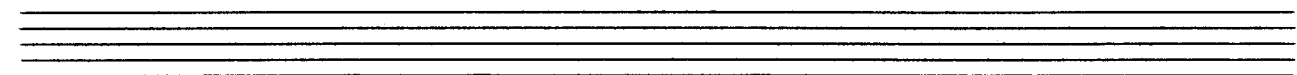
Handwritten musical notation for the first system. It consists of two staves: a treble staff and a bass staff. The treble staff begins with a treble clef, a 4/4 time signature, and a circled 'p' (piano) dynamic marking. The melody starts with a quarter note G4, followed by a dotted quarter note F#4, a quarter note E4, and a quarter note D4. The bass staff starts with a bass clef and a quarter note F3. The system concludes with a double bar line.

Handwritten musical notation for the second system. It consists of two staves: a treble staff and a bass staff. The treble staff continues the melody with a dotted quarter note C4, a quarter note B3, a quarter note A3, and a quarter note G3. The bass staff continues with a quarter note C3, a dotted quarter note B2, a quarter note A2, and a quarter note G2. The system concludes with a double bar line.

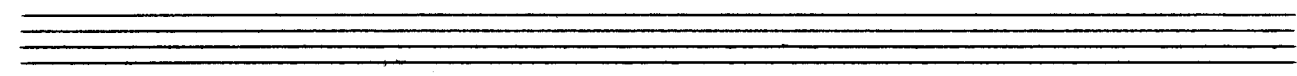
Handwritten musical notation for the third system. It consists of two staves: a treble staff and a bass staff. The treble staff continues the melody with a dotted quarter note F#3, a quarter note E3, a quarter note D3, and a quarter note C3. The bass staff continues with a quarter note F2, a dotted quarter note E2, a quarter note D2, and a quarter note C2. The system concludes with a double bar line.



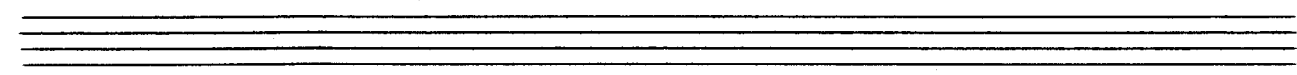
Handwritten musical notation for the first system. The upper staff contains a melodic line with notes G#4, A4, B4, C5, and D5, all marked with a fermata. The lower staff contains a bass line with notes G#2, A2, B2, C3, D3, E3, F3, G3, A3, B3, C4, D4, E4, F4, G4, A4, B4, C5, and D5.



Handwritten musical notation for the second system. The upper staff contains a melodic line with notes Bb4, C5, D5, E5, and F5, all marked with a fermata. The lower staff contains a bass line with notes Bb2, C3, D3, E3, F3, G3, Ab3, Bb3, C4, D4, E4, F4, G4, Ab4, Bb4, C5, and D5.



Handwritten musical notation for the third system. The upper staff contains a melodic line with notes G4, A4, B4, C5, D5, E5, and F5, all marked with a fermata. The lower staff contains a bass line with notes G#2, A2, B2, C3, D3, E3, F3, G3, A3, B3, C4, D4, E4, F4, G4, A4, B4, C5, and D5.



Handwritten musical notation for the fourth system, ending with a double bar line and the word "FIN.". The upper staff contains a melodic line with notes G#4, A4, B4, C5, and D5, all marked with a fermata. The lower staff contains a bass line with notes G#2, A2, B2, C3, D3, E3, F3, G3, A3, B3, C4, D4, E4, F4, G4, A4, B4, C5, and D5.

IV

BREIT

The first system of handwritten musical notation consists of two staves. The upper staff is in treble clef and the lower staff is in bass clef. The time signature is 6/8. The key signature has three flats (B-flat, E-flat, A-flat). The notation includes a circled **fff** dynamic marking. The music features a series of notes with slurs and ties, and rests. The bass staff has some notes with stems pointing downwards, and there are some handwritten annotations below the staff, including what looks like a '7' and a 'b'.

The second system of handwritten musical notation shows a single staff in treble clef. The time signature is 6/8. The key signature has three flats. The notation is characterized by a long, sweeping slur that encompasses a series of notes with various accidentals (flats, sharps, naturals). The notes are written in a somewhat shorthand style, with stems and flags.

The third system of handwritten musical notation continues the melodic line from the second system. It features a single staff in treble clef with a 6/8 time signature and a key signature of three flats. The notation is highly complex, with many accidentals and a large slur covering the entire line. The notes are written with stems and flags, and there are some handwritten annotations, including a '7' and a 'b'.

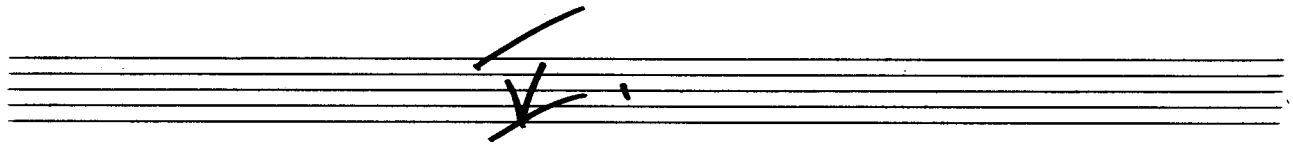


Handwritten musical notation for the first system. The top staff is in treble clef and the bottom staff is in bass clef. The music consists of two measures. The first measure has a treble clef with a note on G4 and a bass clef with a note on G2. The second measure has a treble clef with a note on G4 and a bass clef with a note on G2. There are various accidentals and dynamic markings, including accents (^) and slurs.

Handwritten musical notation for the second system. The top staff is in treble clef and the bottom staff is in bass clef. The music consists of two measures. The first measure has a treble clef with a note on G4 and a bass clef with a note on G2. The second measure has a treble clef with a note on G4 and a bass clef with a note on G2. There are various accidentals and dynamic markings, including accents (^) and slurs.

Handwritten musical notation for the third system. The top staff is in treble clef and the bottom staff is in bass clef. The music consists of two measures. The first measure has a treble clef with a note on G4 and a bass clef with a note on G2. The second measure has a treble clef with a note on G4 and a bass clef with a note on G2. There are various accidentals and dynamic markings, including accents (^) and slurs.

Handwritten musical notation for the fourth system. The top staff is in treble clef and the bottom staff is in bass clef. The music consists of two measures. The first measure has a treble clef with a note on G4 and a bass clef with a note on G2. The second measure has a treble clef with a note on G4 and a bass clef with a note on G2. There are various accidentals and dynamic markings, including accents (^) and slurs. The system ends with a double bar line and the word "FIN".



*Presto*

Handwritten musical notation for the first system. The treble staff contains a melodic line with a long slur over three measures, featuring dotted rhythms and various accidentals (flats and naturals). The bass staff provides accompaniment with eighth and sixteenth notes, also including accidentals.

Handwritten musical notation for the second system. The treble staff has a complex melodic line with many accidentals and a long slur. The bass staff has a simple accompaniment consisting of a few notes with a long slur.

Handwritten musical notation for the third system. The treble staff contains a melodic line with a slur and various accidentals. The bass staff has a rhythmic accompaniment with notes and rests.

Handwritten musical notation for the fourth system. It includes a treble staff with a melodic line, a bass staff with accompaniment, and a final chord with the word "FIN." written above it. There are also some handwritten markings like "1" and "1" above the staff.

VI.

*Prestissimo*

Handwritten musical notation for the first system. It consists of two staves. The top staff is in treble clef with a 6/8 time signature. The bottom staff is in bass clef with an 8/8 time signature. Both staves start with a piano piano (pp) dynamic marking. The music features a melodic line in the treble and a rhythmic accompaniment in the bass, with various note values and rests.

Handwritten musical notation for the second system, continuing the piece. It consists of two staves in treble and bass clefs. The notation includes various note values, rests, and phrasing slurs, maintaining the musical style of the first system.

Handwritten musical notation for the third system. It consists of two staves. The top staff is in treble clef and the bottom staff is in bass clef. The key signature changes to one sharp (F#). The music continues with melodic and rhythmic patterns, including phrasing slurs and dynamic markings.

Handwritten musical notation for the fourth system. It consists of two staves in treble and bass clefs. The key signature remains one sharp (F#). The notation includes various note values, rests, and phrasing slurs, concluding the piece.

longe  
ppp

FIN.

VII

sehr ruhig fließend (behälter)

Handwritten musical notation for the first system. The top staff is in treble clef and contains a long slur over four measures, with notes: a quarter note with a flat (b), a quarter note with a flat (b), a quarter note (q), and a quarter note with a flat (b). The bottom staff is in bass clef and contains a long slur over four measures, with notes: a quarter note (q), a quarter note with a flat (b), a quarter note with a flat (b), and a quarter note with a flat (b). There are additional notes and accidentals in the bottom staff, including a sharp (♯) and a flat (b).

Handwritten musical notation for the second system. The top staff is in treble clef and contains a long slur over four measures, with notes: a quarter note (q), a quarter note with a flat (b), a quarter note with a flat (b), and a quarter note with a flat (b). The bottom staff is in bass clef and contains a long slur over four measures, with notes: a quarter note (q), a quarter note with a flat (b), a quarter note with a flat (b), and a quarter note with a flat (b). There are additional notes and accidentals in the bottom staff, including a sharp (♯) and a flat (b).

Handwritten musical notation for the third system. The top staff is in treble clef and contains a long slur over four measures, with notes: a quarter note (q), a quarter note with a flat (b), a quarter note with a flat (b), and a quarter note (q). The bottom staff is in bass clef and contains a long slur over four measures, with notes: a quarter note (q), a quarter note with a flat (b), a quarter note with a flat (b), and a quarter note with a flat (b). There are additional notes and accidentals in the bottom staff, including a sharp (♯) and a flat (b).

Handwritten musical notation for the fourth system. The top staff is in treble clef and contains a long slur over four measures, with notes: a quarter note (q), a quarter note with a flat (b), a quarter note with a flat (b), and a quarter note with a flat (b). The bottom staff is in bass clef and contains a long slur over four measures, with notes: a quarter note (q), a quarter note with a flat (b), a quarter note with a flat (b), and a quarter note with a flat (b). There are additional notes and accidentals in the bottom staff, including a sharp (♯) and a flat (b). The system ends with a double bar line and the initials "FN." written above it.

VIII

frei rubato

breit

rubato

breit

breit

FIN.



*Prato*

Handwritten musical notation for the first system. It consists of two staves: a treble staff on top and a bass staff on the bottom. The treble staff contains several measures of music with complex rhythmic patterns, including sixteenth and thirty-second notes, and various accidentals (sharps and flats). The bass staff contains fewer notes, primarily focusing on the harmonic support. The notation is dense and expressive, with many slurs and ties.

Handwritten musical notation for the second system. It continues the piece with similar complexity in the treble staff, featuring rapid passages and intricate phrasing. The bass staff provides a steady accompaniment. The notation is highly detailed, with many slurs and ties connecting notes across measures.

Handwritten musical notation for the third system. The treble staff continues with rapid, intricate passages, while the bass staff maintains a consistent accompaniment. The notation is dense and expressive, with many slurs and ties.

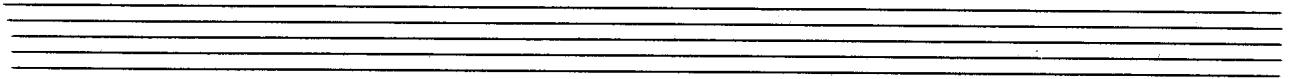
Handwritten musical notation for the fourth system. It concludes the piece with a double bar line. To the right of the double bar line, there are performance instructions: "2. x", "D.C.", "al", and "Fin". The notation is dense and expressive, with many slurs and ties.

*Presto*

Handwritten musical notation for the first system. It consists of two staves: a treble clef staff and a bass clef staff. The time signature is 3/8. The treble staff contains three measures of music, each with a group of six notes (F, G, A, B, C, D) beamed together, with a flat (b) before the first note. The bass staff contains three measures of music, each with a group of four notes (F, G, A, B) beamed together, with a flat (b) before the first note. The first measure of the bass staff has a sharp (#) before the second note. The second measure of the bass staff has a flat (b) before the first note and an accent (^) above the second note. The third measure of the bass staff has a sharp (#) before the second note.

Handwritten musical notation for the second system. It consists of two staves: a treble clef staff and a bass clef staff. The treble staff contains three measures of music, each with a group of six notes (F, G, A, B, C, D) beamed together, with a flat (b) before the first note. The bass staff contains three measures of music, each with a group of four notes (F, G, A, B) beamed together, with a flat (b) before the first note. The first measure of the bass staff has a sharp (#) before the second note and an accent (^) above the second note. The second measure of the bass staff has a flat (b) before the first note and a sharp (#) before the second note. The third measure of the bass staff has a flat (b) before the first note and a sharp (#) before the second note.

Handwritten musical notation for the third system. It consists of two staves: a treble clef staff and a bass clef staff. The treble staff contains three measures of music, each with a group of six notes (F, G, A, B, C, D) beamed together, with a flat (b) before the first note. The bass staff contains three measures of music, each with a group of four notes (F, G, A, B) beamed together, with a flat (b) before the first note. The first measure of the bass staff has a sharp (#) before the second note. The second measure of the bass staff has a flat (b) before the first note and a sharp (#) before the second note. The third measure of the bass staff has a flat (b) before the first note and a sharp (#) before the second note.



Handwritten musical notation for the first system, consisting of two staves. The upper staff is in treble clef and contains four measures of music with notes and rests, some grouped by a slur. The lower staff is in bass clef and contains four measures of music, primarily consisting of chords and some moving lines.



Handwritten musical notation for the second system, consisting of two staves. The upper staff is in treble clef and contains four measures of music with notes and rests, some grouped by a slur. The lower staff is in bass clef and contains four measures of music, primarily consisting of chords and some moving lines.



Handwritten musical notation for the third system, consisting of two staves. The upper staff is in treble clef and contains three measures of music with notes and rests, some grouped by a slur. The lower staff is in bass clef and contains three measures of music, primarily consisting of chords and some moving lines.



Handwritten musical notation for the fourth system, consisting of two staves. The upper staff is in treble clef and contains three measures of music with notes and rests, some grouped by a slur. The lower staff is in bass clef and contains three measures of music, primarily consisting of chords and some moving lines.

Handwritten musical notation for the first system, featuring a grand staff with treble, alto, and bass clefs. The music consists of five measures with various notes and accidentals.

Handwritten musical notation for the second system, featuring a grand staff with treble, alto, and bass clefs. The music consists of five measures with various notes and accidentals.

Handwritten musical notation for the third system, featuring a grand staff with treble, alto, and bass clefs. The music consists of five measures with various notes and accidentals.

Handwritten musical score for the first system, featuring a grand staff with treble, alto, and bass clefs. The music consists of four measures. The right hand plays a descending melodic line with slurs, while the left hand provides harmonic support with chords and a steady bass line.

Handwritten musical score for the second system, continuing the piece. It features a grand staff with treble, alto, and bass clefs. The right hand continues the descending melodic line, and the left hand maintains the harmonic accompaniment.

Handwritten musical score for the third system, concluding the piece. It features a grand staff with treble, alto, and bass clefs. The right hand plays a series of chords, and the left hand provides a final bass line.

Handwritten musical score for the first system. It consists of three staves: treble, alto, and bass. The treble staff contains four measures of music with notes and accidentals (flats and sharps). The alto staff contains four measures of music with notes and accidentals. The bass staff contains four measures of music with notes and accidentals.

Handwritten musical score for the second system. It consists of three staves: treble, alto, and bass. The treble staff contains four measures of music with notes and accidentals. The alto staff contains four measures of music with notes and accidentals. The bass staff contains four measures of music with notes and accidentals.

Handwritten musical score for the third system. It consists of three staves: treble, alto, and bass. The treble staff contains three measures of music with notes and accidentals. The alto staff contains three measures of music with notes and accidentals. The bass staff contains three measures of music with notes and accidentals.

Handwritten musical notation for the first system. It consists of three staves. The top staff has three measures: the first measure contains a quarter note with a sharp sign (#), the second measure contains a quarter note with a flat sign (b), and the third measure contains a quarter note with a flat sign (b). The middle staff has three measures: the first measure contains a quarter note with a sharp sign (#) and a bracketed pair of notes, the second measure contains a quarter note with a flat sign (b) and a bracketed pair of notes, and the third measure contains a quarter note with a flat sign (b) and a bracketed pair of notes. The bottom staff has three measures: the first measure contains a quarter note with a flat sign (b), the second measure contains a quarter note with a sharp sign (#), and the third measure contains a quarter note with a sharp sign (#).

Handwritten musical notation for the second system. It consists of three staves. The top staff has three measures: the first measure contains a quarter note with a double sharp sign (##), the second measure contains a quarter note with a flat sign (b), and the third measure contains a quarter note with a double sharp sign (##). The middle staff has three measures: the first measure contains a quarter note with a sharp sign (#) and a bracketed pair of notes, the second measure contains a quarter note with a flat sign (b) and a bracketed pair of notes, and the third measure contains a quarter note with a sharp sign (#) and a bracketed pair of notes. The bottom staff has three measures: the first measure contains a quarter note with a flat sign (b), the second measure contains a quarter note with a flat sign (b), and the third measure contains a quarter note with a sharp sign (#).

Handwritten musical notation for the third system. It consists of three staves. The top staff has three measures: the first measure contains a quarter note with a flat sign (b), the second measure contains a quarter note with a flat sign (b), and the third measure contains a quarter note with a flat sign (b). The middle staff has three measures: the first measure contains a quarter note with a flat sign (b) and a bracketed pair of notes, the second measure contains a quarter note with a flat sign (b) and a bracketed pair of notes, and the third measure contains a quarter note with a flat sign (b) and a bracketed pair of notes. The bottom staff has three measures: the first measure contains a quarter note with a flat sign (b), the second measure contains a quarter note with a flat sign (b), and the third measure contains a quarter note with a flat sign (b).

Handwritten musical notation for the first system. It consists of a treble clef on the top staff, a grand staff (treble and bass clefs) in the middle, and a bass clef on the bottom staff. The music is written in three measures. The first measure has a treble clef note with a flat and a sharp, and a bass clef note with a sharp. The second measure has a treble clef note with a flat and a sharp, and a bass clef note with a flat. The third measure has a treble clef note with a flat and a sharp, and a bass clef note with a flat.

Handwritten musical notation for the second system. It consists of a treble clef on the top staff, a grand staff (treble and bass clefs) in the middle, and a bass clef on the bottom staff. The music is written in three measures. The first measure has a treble clef note with a sharp and a sharp, and a bass clef note with a sharp. The second measure has a treble clef note with a sharp and a sharp, and a bass clef note with a sharp. The third measure has a treble clef note with a flat and a sharp, and a bass clef note with a flat.

Handwritten musical notation for the third system. It consists of a treble clef on the top staff, a grand staff (treble and bass clefs) in the middle, and a bass clef on the bottom staff. The music is written in three measures. The first measure has a treble clef note with a flat and a sharp, and a bass clef note with a flat. The second measure has a treble clef note with a flat and a sharp, and a bass clef note with a flat. The third measure has a treble clef note with a flat and a sharp, and a bass clef note with a flat.



Handwritten musical score for the first system. It consists of three staves. The top staff has a treble clef and a key signature of one flat. The middle and bottom staves are bracketed together. The music consists of three measures with various notes, rests, and accidentals.

Handwritten musical score for the second system. It consists of three staves. The top staff has a treble clef and a key signature of one flat. The middle and bottom staves are bracketed together. The music consists of three measures with various notes, rests, and accidentals.

Handwritten musical score for the third system. It consists of three staves. The top staff has a treble clef and a key signature of one flat. The middle and bottom staves are bracketed together. The music consists of three measures with various notes, rests, and accidentals.

Handwritten musical score for the first system, featuring three staves with treble, alto, and bass clefs. The first staff has a treble clef and contains three measures of sixteenth-note runs. The second staff has an alto clef and contains three measures of chords. The third staff has a bass clef and contains three measures of single notes.

Handwritten musical score for the second system, featuring three staves with treble, alto, and bass clefs. The first staff has a treble clef and contains three measures of sixteenth-note runs. The second staff has an alto clef and contains three measures of chords. The third staff has a bass clef and contains three measures of single notes.

Handwritten musical score for the third system, featuring three staves with treble, alto, and bass clefs. The first staff has a treble clef and contains three measures of sixteenth-note runs. The second staff has an alto clef and contains three measures of chords. The third staff has a bass clef and contains three measures of single notes.

Handwritten musical score for the first system. It consists of three measures. The top staff is in treble clef, the middle in alto clef, and the bottom in bass clef. The first measure has a treble clef key signature of one sharp (F#) and a bass clef key signature of one sharp (F#). The second measure has a treble clef key signature of two sharps (F#, C#) and a bass clef key signature of one sharp (F#). The third measure has a treble clef key signature of one flat (Bb) and a bass clef key signature of one flat (Bb). The notation includes various note values, rests, and slurs.

Handwritten musical score for the second system. It consists of three measures. The top staff is in treble clef, the middle in alto clef, and the bottom in bass clef. The first measure has a treble clef key signature of one sharp (F#) and a bass clef key signature of one sharp (F#). The second measure has a treble clef key signature of one flat (Bb) and a bass clef key signature of one flat (Bb). The third measure has a treble clef key signature of two flats (Bb, Eb) and a bass clef key signature of one flat (Bb). The notation includes various note values, rests, and slurs.

Handwritten musical score for the third system. It consists of three measures. The top staff is in treble clef, the middle in alto clef, and the bottom in bass clef. The first measure has a treble clef key signature of one sharp (F#) and a bass clef key signature of one sharp (F#). The second measure has a treble clef key signature of one flat (Bb) and a bass clef key signature of one flat (Bb). The third measure has a treble clef key signature of two flats (Bb, Eb) and a bass clef key signature of one flat (Bb). The notation includes various note values, rests, and slurs.

color  
Oberlin (rubato)

Handwritten musical notation for the first system, featuring a grand staff with treble, alto, and bass clefs. The music includes notes with accidentals (flats and sharps), slurs, and dynamic markings like '6' and '8'. The bass line has some rhythmic markings.

Handwritten musical notation for the second system, showing a grand staff with mostly empty treble and alto staves and a more active bass staff with a series of notes and slurs.

Handwritten musical notation for the third system, featuring a grand staff with complex melodic lines in the treble and bass staves, including many accidentals and slurs.

Handwritten musical score for the first system. It consists of three staves: treble, alto, and bass clefs. The treble staff has a sharp sign above the first measure and a double sharp sign above the second measure. The alto staff has a sharp sign above the first measure and a double sharp sign above the second measure. The bass staff has a sharp sign above the first measure and a double sharp sign above the second measure. The notes are mostly quarter and eighth notes with various accidentals.

Handwritten musical score for the second system. It consists of three staves: treble, alto, and bass clefs. The treble staff has a sharp sign above the first measure and a double sharp sign above the second measure. The alto staff has a sharp sign above the first measure and a double sharp sign above the second measure. The bass staff has a sharp sign above the first measure and a double sharp sign above the second measure. The notes are mostly quarter and eighth notes with various accidentals.

Handwritten musical score for the third system. It consists of three staves: treble, alto, and bass clefs. The treble staff has a sharp sign above the first measure and a double sharp sign above the second measure. The alto staff has a sharp sign above the first measure and a double sharp sign above the second measure. The bass staff has a sharp sign above the first measure and a double sharp sign above the second measure. The notes are mostly quarter and eighth notes with various accidentals.

*ausgew. Klänge*  
*Adolf Scherbaum*