

# 7. TEILE für Flöte

(Klavier (Flöte 2)  
(Tonband.

1967

Notenheft **Adolf Scheerbaum.**

# ONE MAN.

7 Teile für Flöte Solo

mit Klavier (mit teilweise  
zweite Flöte)

Der Flötist begleitet sich selbst am Klavier,  
bei einzelnen Teilen aber wird Klavier und (2 Flöte) auf Tonband  
aufgenommen.

Der Solist hat ein eigenes Mikrophon (mit Lautsprecher) verteilt im Saal)

das Tonbandgerät (mit verteilten Lautsprechern (im Saal)  
muss so aufgestellt werden, dass es für den Zuhörer nicht  
sichtbar ist. -

Wichtig ist, dass alles von einem Spieler gespielt wird.!

# Teil 1

Langsam

KLAVIER

777 (Original)

(letzter ev. mit)

FIN

Handwritten musical notation for the first system. The top staff is in treble clef with a sharp sign (F#) and contains notes with flats and naturals. The bottom staff is in bass clef with a double sharp sign (F#) and contains notes with flats and naturals. A large bracket on the left side of the first staff indicates a specific fingering or articulation.

Handwritten musical notation for the second system. The top staff is in treble clef with a sharp sign (F#) and contains notes with flats and naturals. The bottom staff is in bass clef with a double sharp sign (F#) and contains notes with flats and naturals.

Handwritten musical notation for the third system. The top staff is in treble clef with a sharp sign (F#) and contains notes with flats and naturals. The bottom staff is in bass clef with a double sharp sign (F#) and contains notes with flats and naturals.

Handwritten musical notation for the fourth system. The top staff is in treble clef with a sharp sign (F#) and contains notes with flats and naturals. The bottom staff is in bass clef with a double sharp sign (F#) and contains notes with flats and naturals. The system concludes with a double bar line and a box containing the text "D.C.", "ad", and "Fin".

# Teil 2

sehr langsam (frei)

Flöt

viel wubato

Original

belingen bis

FIN

(für Einsatz)

pp

Handwritten musical score for the first system. The top staff is for the flute, showing notes with dynamic markings such as *pp*, *normal*, and *ffp*. The bottom staff is for the piano, with a section labeled *Pastor* and various chordal textures.

Handwritten musical score for the second system. The top staff is for the flute, with a section labeled *pesante* and notes marked with accents. The bottom staff is for the piano, featuring a steady accompaniment.

Handwritten musical score for the third system. The top staff is for the flute, with a section labeled *Prestissimo* and notes marked with accents. The bottom staff is for the piano, with a final section labeled *D.C. ad. Fine*.

# Teil 3

**Presto**

2 #

2 Original

Pedal

**Allegro**

Allegro





# Teil 4.

**K**  
**L**  
**A**  
**V.**

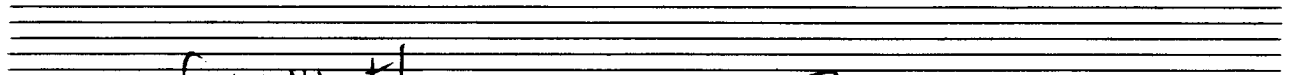
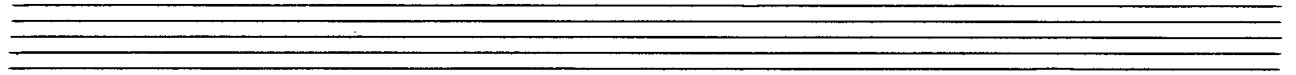
*sehr langsam*

**6/8**

**pp** Original

Pedal bis Fin

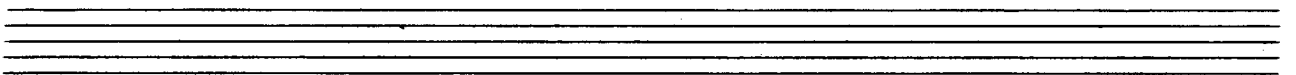
**FIN**



Flöte (viel Vibrato)  
frei  $\flat$   
 $pp$



$\flat$   
 $\#$   $>$   $pp$   $pp$



o

Pedal über  $\#$   
Pedal unter  $\flat$   
Pedal links  $\boxtimes$

$pp$   $\#$   $\flat$   $\#$   $\flat$   $\flat$   $\flat$   $\flat$   $\flat$   $\#$   $\flat$   $\#$   $>$   $ppp$

2. te\*  
D.C.  
al  
Fino

# Teil 5.

(Klavier vorher auf Tonband)  
2. Flöte " " "  
(mit ~~mit~~)

**sehr gleichmäßig und**

viel Vibrato (dürft)

Handwritten musical score for the first system. It consists of two staves: a treble clef staff for the flute and a bass clef staff for the piano. A large, bold '6/8' time signature is written across both staves. The piano part includes the instruction 'Pedal' and a dynamic marking 'pp'. The flute part has a dynamic marking 'pp' and a note with a sharp sign and a fermata. There are various slurs and accents throughout the system.

Handwritten musical score for the second system. It features three staves: a treble clef staff for the flute and two bass clef staves for the piano. The flute part has a dynamic marking 'pp' and a note with a sharp sign and a fermata. The piano part has a dynamic marking 'pp' and a note with a sharp sign and a fermata. There are various slurs and accents throughout the system.

Handwritten musical score for the third system. It features three staves: a treble clef staff for the flute and two bass clef staves for the piano. The flute part has a dynamic marking 'p' and a note with a sharp sign and a fermata. The piano part has a dynamic marking 'p' and a note with a sharp sign and a fermata. There are various slurs and accents throughout the system.

Handwritten musical score for the first system. It consists of three staves: a single treble clef staff at the top and a grand staff (treble and bass clefs) below. The top staff contains a melodic line with notes, slurs, and dynamic markings such as *mf* and *p*. A circled *p* is present. The grand staff contains accompaniment with chords and notes. The word "breit" is written above the top staff. The system concludes with a double bar line.

Handwritten musical score for the second system. It features three staves. The top staff has a melodic line with notes and slurs, starting with the instruction "(frei)". The grand staff below contains accompaniment with a long, sweeping line across the staves. The instruction "bis verklingen" is written in the left hand, and "pp" is written in the right hand. The system ends with a double bar line.

Handwritten musical score for the third system. It consists of three staves. The top staff has a melodic line with notes and slurs, including a circled *pp* marking. The grand staff below contains accompaniment with a wavy, tremolo-like texture. The instruction "Guss" is written above the left hand, and "Pöbel über Säulen" is written below the left hand. The system ends with a double bar line.



Handwritten musical score for the first system. The top staff (flute) contains a melodic line with various accidentals (sharps, flats, naturals) and a circled 'H' at the beginning. The bottom staff (piano) features a complex, wavy accompaniment. A circled 'H' is also present in the piano part. A dynamic marking 'pp' is written in the piano part. A fermata is placed over the final notes of the flute part.

Handwritten musical score for the second system. The top staff (flute) continues the melodic line with accidentals. The bottom staff (piano) has a wavy accompaniment. A dynamic marking 'pp' is present. A 'Cresc...' marking with a right-pointing arrow is written below the piano part. A fermata is placed over the final notes of the flute part.

Handwritten musical score for the third system. The top staff (flute) has a melodic line with accidentals and a circled 'H'. The bottom staff (piano) features a wavy accompaniment. A dynamic marking 'pp' is present. A 'Cresc...' marking with a right-pointing arrow is written below the piano part. A circled 'H' is present in the piano part. A fermata is placed over the final notes of the flute part.

Tempo 1 (sehr langsame  $\text{♩} = 40$ )

pp

Pedal

pp

Pedal

Handwritten musical score for the first system, featuring treble and bass clefs. The music includes various notes, rests, and dynamic markings such as *f* and *pp*. A circled *f* is present in the bass clef. The notation is dense and includes many accidentals.

Handwritten musical score for the second system. It includes a treble clef and a bass clef. The notation is sparse, with a large handwritten note in the bass clef that reads "(verklingen lassen)". There are also some dynamic markings like *pp* and *ppp*.

Handwritten musical score for the third system, ending with a large, bolded "FIN" written vertically on the right side. The system contains treble and bass clefs with notes and rests. A circled *pp* is in the bass clef. At the bottom left, there is a handwritten note "Cadenz" with a treble clef and a sharp sign. The system concludes with a thick black vertical bar.



# Teil 6.

*breit*

KLAVIER

Original

Handwritten musical notation for the first system. It consists of two staves. The upper staff contains two chords with a sharp sign and a flat sign, followed by two more chords with a flat sign. The lower staff contains two chords with a sharp sign and a flat sign, followed by two more chords with a flat sign. A wavy line labeled "Gliss" is drawn across the upper staff, indicating a glissando.

Handwritten musical notation for the second system. It consists of two staves. The upper staff contains a series of chords with various accidentals and a "pesante" marking. The lower staff contains a series of chords with various accidentals and a "Pedal" marking. There are also some numerical markings like "3" and "8" indicating fingerings or groupings.

Handwritten musical notation for the third system. It consists of two staves. The upper staff contains a series of chords with various accidentals and a "Pedal" marking. The lower staff contains a series of chords with various accidentals and a "rit." marking. There is also a circled "8" at the end of the system.

(so rasch als möglich)

# Teil 7

1. Fl.  
2. Fl.  
auf Ton band  
alles (linke Hand (Oktave tiefer))



F. 2

dieser Block (4 Takte) sempre bis ⊕ (dann Flöten Solo)

Flöten Solo (bei ⊕) Block + Solo sempre!!! mit größter Präzision!!!

Handwritten musical score for 'One Man' by Adolf Scherbaum. The score is written in treble clef and consists of 12 staves. It features complex rhythmic patterns, including sixteenth and thirty-second notes, and various chordal textures. The notation includes many accidentals (sharps, flats, naturals) and dynamic markings such as accents (^) and slurs. The piece concludes with a double bar line on the final staff.

Handwritten musical score for 'One Man: 7 Teile für Flöte Solo mit Klavier, SWV 72 (1961)' by Adolf Scherbaum. The score consists of 11 staves. The first staff is a treble clef with a whole rest. The second and third staves are treble clefs with complex melodic lines and many accidentals. The fourth staff is a treble clef with a complex melodic line. The fifth and sixth staves are treble clefs with complex melodic lines and many accidentals. The seventh staff is a treble clef with a complex melodic line. The eighth, ninth, and tenth staves are treble clefs with complex melodic lines and many accidentals. The eleventh staff is a treble clef with a complex melodic line and many accidentals.





1 (Flautoz.)

(ohne Flautoz.)

(ad. lib. (stacc) oder leg.)

Flöte allein (Kadenz) frei

Klavier

Pedal