

7. Teile für Flöte

(Klavier (Flöte 2)

(Tonband.

1961

Notenhilfe **Adolf Scherbaum.**



ONE MAN.

7 Teile für Flöte Solo

mit Klavier (mit teilweise
zweite Flöte)

Der Flötist begleitet sich selbst am Klavier,
bei einzelnen Teilen aber wird Klavier und (2 Flöte) auf Tonband
aufgenommen.

Der Solist hat ein eigenes Mikrophon (mit Lautsprecher) verteilt im Saal)

das Tonbandgerät (mit verteilten Lautsprechern (im Saal)
muss so aufgestellt werden, dass es für den Zuhörer nicht
sichtbar ist. -

Wichtig ist, dass alles von einem Spieler gespielt wird.!

Teil 1

KLAVIER

Langsam

fff (Original)

Handwritten musical notation for the first system. The treble clef staff contains a sequence of notes: G4, A4, B4, C5, B4, A4, G4. The bass clef staff contains chords: G2-B2-E3, A2-C3-E3, B2-D3-F3, G2-B2-E3, A2-C3-E3. A bracket above the first measure is labeled "Langsam". A dynamic marking "fff (Original)" is written above the first measure.

Handwritten musical notation for the second system. The treble clef staff contains notes: G4, A4, B4, C5, B4, A4, G4. The bass clef staff contains chords: G2-B2-E3, A2-C3-E3, B2-D3-F3, G2-B2-E3, A2-C3-E3.

Handwritten musical notation for the third system. The treble clef staff contains notes: G4, A4, B4, C5, B4, A4, G4. The bass clef staff contains chords: G2-B2-E3, A2-C3-E3, B2-D3-F3, G2-B2-E3, A2-C3-E3.

Handwritten musical notation for the fourth system. The treble clef staff contains notes: G4, A4, B4, C5, B4, A4, G4. The bass clef staff contains chords: G2-B2-E3, A2-C3-E3, B2-D3-F3, G2-B2-E3, A2-C3-E3. A box labeled "FIN" is drawn at the end of the piece, with a downward arrow pointing to it. The text "(letzter ev. mit)" is written above the final measure.

Handwritten musical notation for the first system. The top staff is in treble clef and contains a large bracket on the left side. The bottom staff is in bass clef with a treble clef on the right side. The music consists of several measures with notes and rests.

Handwritten musical notation for the second system. The top staff is in treble clef. The bottom staff is in bass clef with a treble clef on the right side. The music consists of several measures with notes and rests.

Handwritten musical notation for the third system. The top staff is in treble clef. The bottom staff is in bass clef with a treble clef on the right side. The music consists of several measures with notes and rests.

Handwritten musical notation for the fourth system. The top staff is in treble clef. The bottom staff is in bass clef with a treble clef on the right side. The system ends with a large bracket on the right side containing the text "D.C. ad Fin".

Handwritten musical score for the first system. The top staff is for the flute, starting with a circled 'p' and 'pp' dynamic markings. It includes notes with accidentals (sharps, flats, naturals) and slurs. A 'normal' marking is present above a note. The bottom staff is for the piano, with a 'Pizzicato' marking and notes with accidentals.

Handwritten musical score for the second system. The top staff is for the flute, with a 'pizzicato' marking and notes with accidentals. The bottom staff is for the piano, with 'collo' markings and notes with accidentals.

Handwritten musical score for the third system. The top staff is for the flute, with a 'Prestissimo' marking and notes with accidentals. The bottom staff is for the piano, with 'D.C. ad. Fine' markings and a large blacked-out area at the end.

Teil 4.

K
L
A
V.

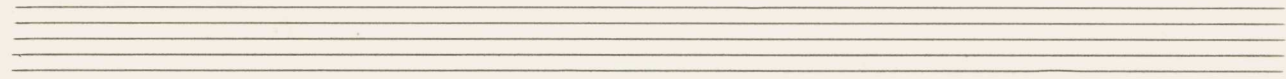
6/8

pp Original

Sehr langsam

Pedal bis Fin

FIN

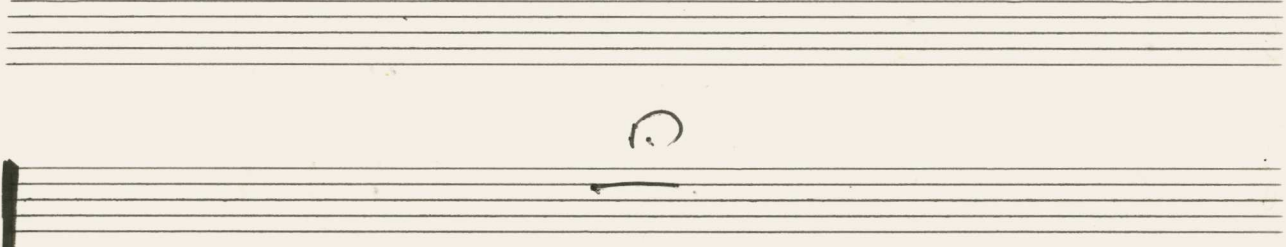


Flöte (viel Vibrato)
frei

pp

pp

> pp



Pedal über ###

Pedal hin ⊗

pp

> ppp

2. te^x

D.C.

ad

Fine

Teil 5.

(Klavier vorher auf Tonband)
2. Flöte " " "
(mit ~~erhöhter~~)

sehr gleichmäßig spielen

viel Vibrato (dünn)

Handwritten musical score for the first system. It consists of two staves: a treble clef staff for the flute and a bass clef staff for the piano. A large, bold '6/8' time signature is written across both staves. The piano part includes the instruction 'Pedal' and 'pp'. The flute part includes 'pp' and 'viel Vibrato (dünn)'. There are various musical notations including notes, rests, and dynamic markings.

Handwritten musical score for the second system. It features three staves: a treble clef staff for the flute and two bass clef staves for the piano. The flute part has notes with accents and dynamics like 'pp' and 'p'. The piano part has chords and moving lines. There are various musical notations including notes, rests, and dynamic markings.

Handwritten musical score for the third system. It features three staves: a treble clef staff for the flute and two bass clef staves for the piano. The flute part has notes with accents and dynamics like 'mf' and 'p'. The piano part has chords and moving lines. There are various musical notations including notes, rests, and dynamic markings.

Handwritten musical score for the first system. It consists of three staves: a single treble clef staff at the top, and a grand staff (treble and bass clefs) below. The top staff contains a melodic line with notes, slurs, and dynamic markings such as *mf* and *p*. A circled *p* is followed by an accent mark. The grand staff contains accompaniment with chords and notes, including dynamic markings like *mf* and *tt*. The word "breit" is written above the top staff. The system concludes with a double bar line.

Handwritten musical score for the second system. It features a single treble clef staff and a grand staff. The top staff has a melodic line with notes, slurs, and dynamic markings including *pp* and *mp*. The word "frei" is written above the first measure. The grand staff contains accompaniment with notes and slurs, and the instruction "bis verklingen" is written below the left hand. The system ends with a double bar line.

Handwritten musical score for the third system. It includes a single treble clef staff and a grand staff. The top staff has notes with slurs and dynamic markings like *pp*. The grand staff contains a highly textured accompaniment with many notes and slurs. The instruction "Pizzico über Saiten" is written below the left hand. The system ends with a double bar line.

Handwritten musical score for the first system. The system consists of a flute part and a piano accompaniment. The flute part begins with a whole rest, followed by a series of notes with dynamic markings: *pp*, $\#0$, b , *mf*, b , and *f*. The piano part is highly textured and expressive, starting with a *ppp* dynamic marking.

Handwritten musical score for the second system. The flute part continues with notes and dynamic markings: $\#$, $\#0$, *pp*, *mf*, $\#$, and *f*. The piano part features a wavy, melodic line in the upper register and a more rhythmic, textured line in the lower register.

Handwritten musical score for the third system. The flute part includes notes with dynamic markings: $\#$, *pp*, *f*, and *f*. The piano part continues with a wavy, melodic line in the upper register and a rhythmic, textured line in the lower register.

Handwritten musical score for the first system. The top staff contains a melodic line with various accidentals (flats and naturals) and a circled 'H' below it. The bottom two staves show a piano accompaniment with wavy, scribbled lines. A circled 'H' is also present in the piano part. The system ends with a double bar line and the number '3333'.

Handwritten musical score for the second system. The top staff features a melodic line with notes and accidentals. The bottom two staves show a piano accompaniment with wavy lines. A 'cresc.' marking with an arrow is written below the piano part. The system ends with a double bar line and the number '33'.

Handwritten musical score for the third system. The top staff has a melodic line with notes and accidentals, including the instruction 'frei spielen' above it. The bottom two staves show a piano accompaniment with wavy lines and a 'ppp' marking. The system ends with a double bar line and the number 'ppp'.

Tempo 1 (sehr langsam) \flat (Solo)

pp

Pedal

pp

Pedal

pp

Pedal

Handwritten musical score for the first system. It consists of three staves: a single treble clef staff at the top, and a grand staff (treble and bass clefs) below. The top staff contains a melodic line with various accidentals (sharps, flats, naturals) and some pink annotations. A circled 'H' is written above the first measure. The grand staff contains chordal accompaniment with notes and stems. A circled 'f' is written above the first measure of the grand staff. The system concludes with a double bar line.

Handwritten musical score for the second system. It consists of three staves. The top staff has a treble clef and contains a melodic line with pink annotations and a circled '47'. The middle and bottom staves are part of a grand staff. The middle staff contains the text "(verklingen lassen)" with a dashed line underneath, indicating a fading effect. The bottom staff contains notes and stems. The system concludes with a double bar line.

Handwritten musical score for the third system. It consists of three staves. The top staff has a treble clef and contains a melodic line with notes and accidentals, ending with a circled 'FIN' and a thick black vertical line. The middle staff has a treble clef and contains notes and stems with pink annotations. The bottom staff has a grand staff with notes and stems. A circled 'pp' is written above the first measure of the grand staff. The system concludes with a double bar line.

Teil 6.

weit

Original

Handwritten musical notation for the first system. It consists of two staves. The upper staff contains two chords with accents (^) above them, followed by a wavy line labeled "Gliss" with an arrow pointing to the right. The lower staff contains two chords with accents (^) above them, followed by another chord with an accent (^) above it.

Handwritten musical notation for the second system. The upper staff features complex chord structures with eighth notes and triplets (marked with '3'). The lower staff includes a "pesante" marking and a "Pedal" marking. The system concludes with a long horizontal line extending across the bottom of the page.

Handwritten musical notation for the third system. It features a "Pedal" marking above the first measure. The lower staff contains several chords with accents (^) above them. A circled chord is present at the end of the system, with a "stacca" marking above it. A circled "8" is also visible below the circled chord.

(so rasch als möglich)

Teil 7

1. Fl. (F#)
2. Fl. (F#)
auf Tonband
alles (linke Hand (Oktave tiefer))

Handwritten musical score for the first system. The top staff is for the flute, with several measures of rests followed by notes and pink annotations. The piano accompaniment is written in two staves (treble and bass clef). The piano part includes chords and a bass line with notes and stems.

Handwritten musical score for the second system. The flute part continues with notes and rests, featuring pink annotations. The piano accompaniment continues with chords and a bass line. The piano part includes some chordal textures and a steady bass line.

Handwritten musical score for the third system. The flute part has a few notes and rests. The piano accompaniment concludes with a final chord in the right hand and a bass line. A circled 'p' is visible in the piano part, indicating a piano dynamic. The word 'dim' is written in the piano part, suggesting a decrescendo.

F. 2

dieser Block (4 Takte) sempre bis ⊕ (dazu Flöten Solo)

Flöten Solo (bei ⊕) Block + Solo sempre!!! mit größter Steigerung!!!

Handwritten musical score for "One Man: 7 Teile für Flöte Solo mit Klavier, SWV 72 (1961)" by Adolf Scherbaum. The score is written in G major and 3/4 time. It consists of 11 staves. The first staff is a whole rest. The second and third staves show a melodic line with various ornaments and slurs. The fourth staff is a rhythmic accompaniment with eighth notes. The fifth and sixth staves show a melodic line with many ornaments and slurs. The seventh staff is a rhythmic accompaniment with eighth notes. The eighth, ninth, and tenth staves show a melodic line with many ornaments and slurs. The eleventh staff is a rhythmic accompaniment with eighth notes.

Handwritten musical score for 'One Man' by Adolf Scherbaum. The score is written in treble clef and includes a variety of musical notations such as slurs, triplets, and complex rhythmic patterns. The piece is marked with a circled 'p' for piano. The notation includes many accidentals (sharps, flats, naturals) and some unusual symbols, possibly indicating specific fingerings or articulations. The score concludes with a double bar line and a decorative flourish.

Flöte 3.

(ohne Flöte 3)

(ad. lib. (stacc) oder leg.)

Block aus

Flöte allein (Kadenz) frei

Klavier

Pedal

A. SCHERBAUM

FIN