

6 Improvisationen  
über eine Tonfolge  
1861 Wien  
für Orgel.

**Notenheft**

6 Improvisationen  
über eine Tonfolge

1961 Wien

Adolf Scherbaum

(Große Orgel)

*lento* (auf 6)

Handwritten musical notation for the first system, featuring a treble clef and a bass clef. The music is in a key signature of one flat (B-flat) and common time. The upper staff contains a melodic line with notes: G, A, B $\flat$ , C, B $\flat$ , A, G, F, E, D. The lower staff contains a bass line with notes: G, A, B $\flat$ , C, B $\flat$ , A, G, F, E, D. Dynamics include *pp* and *8*.

Handwritten musical notation for the second system, featuring a treble clef and a bass clef. The music is in a key signature of one flat (B-flat) and common time. The upper staff contains a melodic line with notes: G, A, B $\flat$ , C, B $\flat$ , A, G, F, E, D. The lower staff contains a bass line with notes: G, A, B $\flat$ , C, B $\flat$ , A, G, F, E, D. Dynamics include *pp* and *8*.

Handwritten musical notation for the third system, featuring a treble clef and a bass clef. The music is in a key signature of one flat (B-flat) and common time. The upper staff contains a melodic line with notes: G, A, B $\flat$ , C, B $\flat$ , A, G, F, E, D. The lower staff contains a bass line with notes: G, A, B $\flat$ , C, B $\flat$ , A, G, F, E, D. Dynamics include *pp* and *8*.



2.

pesante

Handwritten musical notation for the first system, featuring a grand staff with treble and bass clefs. The treble clef part has a 4/4 time signature and contains notes: G4 (quarter), A4 (quarter), B4 (quarter), C5 (quarter), D5 (quarter), E5 (quarter), F5 (quarter), G5 (quarter). The bass clef part contains notes: G3 (quarter), A3 (quarter), B3 (quarter), C4 (quarter), D4 (quarter), E4 (quarter), F4 (quarter), G4 (quarter). There are various accidentals and slurs throughout the system.

Handwritten musical notation for the second system, featuring a grand staff with treble and bass clefs. The treble clef part contains notes: G4 (quarter), A4 (quarter), B4 (quarter), C5 (quarter), D5 (quarter), E5 (quarter), F5 (quarter), G5 (quarter). The bass clef part contains notes: G3 (quarter), A3 (quarter), B3 (quarter), C4 (quarter), D4 (quarter), E4 (quarter), F4 (quarter), G4 (quarter). There are various accidentals and slurs throughout the system.

Handwritten musical notation for the third system, featuring a grand staff with treble and bass clefs. The treble clef part contains notes: G4 (quarter), A4 (quarter), B4 (quarter), C5 (quarter), D5 (quarter), E5 (quarter), F5 (quarter), G5 (quarter). The bass clef part contains notes: G3 (quarter), A3 (quarter), B3 (quarter), C4 (quarter), D4 (quarter), E4 (quarter), F4 (quarter), G4 (quarter). There are various accidentals and slurs throughout the system.

Handwritten musical notation for the first system. The treble clef staff contains notes with accidentals:  $\# \circ$ ,  $\# \circ$ ,  $\# \circ$ ,  $\# \circ$ ,  $\flat \circ$ ,  $\flat \circ$ ,  $\flat \circ$ . The bass clef staff contains notes:  $\# \circ$ ,  $\circ$ .

Handwritten musical notation for the second system. The treble clef staff contains notes with accidentals:  $\flat \circ$ ,  $\flat \circ$ ,  $\flat \circ$ ,  $\flat \circ$ ,  $\flat \circ$ ,  $\flat \circ$ ,  $\flat \circ$ . The bass clef staff contains notes:  $\circ$ ,  $\circ$ ,  $\circ$ ,  $\circ$ ,  $\circ$ ,  $\circ$ ,  $\circ$ . The text "Zeit gut" is written below the bass staff.

Handwritten musical notation for the third system. The treble clef staff contains notes with accidentals:  $\#$ ,  $\#$ ,  $\#$ ,  $\#$ ,  $\#$ ,  $\#$ ,  $\#$ . The text "C" is written above the treble staff. The text "fue" is written above the bass staff.

3

Moderato (solo playing)

Handwritten musical notation for the first system. The treble clef staff contains a 3/4 time signature and a melodic line with notes and accidentals: G4, A4, B4, C5, B4, A4, G4, F4, E4, D4, C4. The bass clef staff contains a bass line with notes and accidentals: G2, A2, B2, C3, B2, A2, G2, F2, E2, D2, C2.

Handwritten musical notation for the second system. The treble clef staff continues the melodic line: D4, E4, F4, G4, A4, B4, C5, B4, A4, G4, F4, E4, D4, C4. The bass clef staff continues the bass line: G2, A2, B2, C3, B2, A2, G2, F2, E2, D2, C2.

Handwritten musical notation for the third system. The treble clef staff concludes the melodic line: D4, E4, F4, G4, A4, B4, C5, B4, A4, G4, F4, E4, D4, C4. The bass clef staff concludes the bass line: G2, A2, B2, C3, B2, A2, G2, F2, E2, D2, C2.

Handwritten musical notation for the first system. The treble clef staff contains a melodic line with notes and accidentals (sharps and flats) under a large slur. The bass clef staff contains a bass line with notes and accidentals.

Handwritten musical notation for the second system. The treble clef staff contains a melodic line with notes and accidentals under a large slur. The bass clef staff contains a bass line with notes and accidentals.

Handwritten musical notation for the third system. The treble clef staff contains a melodic line with notes and accidentals, including some beamed notes. The bass clef staff contains a bass line with notes and accidentals.

Handwritten musical notation for the fourth system. The treble clef staff contains a melodic line with notes and accidentals. The bass clef staff contains a bass line with notes and accidentals. The word "Fine" is written above the staff, and a large flourish is written below the staff.



4

ADAGIO

pp so ruhig als möglich

pp

pp

Handwritten musical notation for the first system. The top staff is in treble clef and contains a melodic line with various accidentals (sharps, flats) and a long slur. The bottom two staves are in bass clef and contain chords and a bass line with a few notes.

Handwritten musical notation for the second system. The top staff is in treble clef and contains a melodic line with various accidentals and a long slur. The bottom two staves are in bass clef and contain chords and a bass line with a few notes. The word "ppp" is written in the right-hand bass staff.

Handwritten musical notation for the third system. The top staff is in treble clef and contains a melodic line with various accidentals and a long slur. The bottom two staves are in bass clef and contain chords and a bass line with a few notes. The word "lunga" is written in the right-hand treble staff.

5

sehr breit)  
(frei)

subato  
acc2.  
Lunga

sehr breit  $\frac{6}{4}$

Lunga  
Lunga

Lunga  
Lunga

Handwritten musical score for the first system. It consists of two staves: a treble clef staff and a bass clef staff. The treble staff contains several measures of music with notes, accidentals (sharps and flats), and dynamic markings like 'pp'. The bass staff contains notes and accidentals. There are some scribbles and a circled 'o' at the end of the system.

Handwritten musical score for the second system. It features a treble clef staff with a melodic line. The first measure is marked 'G.P.' and the second measure is marked 'pp'. The melody consists of eighth and quarter notes with various accidentals. There are also some scribbles and a circled 'o' at the end of the system.

Handwritten musical score for the third system. It features a treble clef staff with a melodic line. The melody consists of eighth and quarter notes with various accidentals. There is a circled 'o' at the end of the system.

Handwritten musical score for the fourth system. It features a treble clef staff with a melodic line. The melody consists of eighth and quarter notes with various accidentals. There is a circled 'o' at the end of the system.

6

ruhig fließend

auf 8 Schläge

Handwritten musical notation for the first system, featuring a grand staff with treble and bass clefs. The time signature is 4/8. The first measure contains a melodic line in the treble clef and a bass clef with a flat sign. The second measure continues the melody with a sharp sign. The third measure has a flat sign and a sharp sign. The fourth measure has a sharp sign and a flat sign. A slur covers the entire system.

Handwritten musical notation for the second system, featuring a grand staff with treble and bass clefs. The first measure contains a melodic line in the treble clef and a bass clef with a flat sign. The second measure continues the melody with a sharp sign. The third measure has a sharp sign and a flat sign. The fourth measure has a sharp sign and a flat sign. A slur covers the entire system.

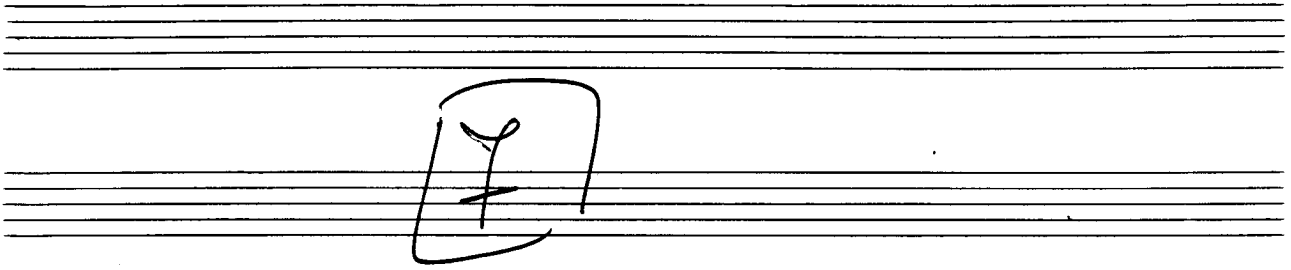
Handwritten musical notation for the third system, featuring a grand staff with treble and bass clefs. The first measure contains a melodic line in the treble clef with a sharp sign and a bass clef with a flat sign. The second measure continues the melody with a flat sign and a sharp sign. The third measure has a flat sign and a sharp sign. The fourth measure has a flat sign and a sharp sign. A slur covers the entire system.

Handwritten musical notation for the first system. The treble clef staff contains a melodic line with notes and accidentals (flats and sharps). The bass clef staff contains a bass line with notes and accidentals. A dynamic marking 'b' is present in the second measure of the bass line.

Handwritten musical notation for the second system. The treble clef staff contains a melodic line with notes and accidentals. The bass clef staff contains a bass line with notes and accidentals. A dynamic marking 'b' is present in the first measure of the bass line.

Handwritten musical notation for the third system. The treble clef staff contains a melodic line with notes and accidentals. The bass clef staff contains a bass line with notes and accidentals. A dynamic marking 'f' is present in the first measure of the bass line.

Handwritten musical notation for the fourth system. The treble clef staff contains a melodic line with notes and accidentals. The bass clef staff contains a bass line with notes and accidentals. A dynamic marking 'p' is present in the first measure of the bass line. The system concludes with a double bar line and a fermata.



sehr ruhig (langsam)

pp 4





Handwritten musical notation for the first system. The top staff is in treble clef and contains two measures of eighth notes with accidentals. The bottom staff is in bass clef and contains a whole note chord with a sharp sign.

Handwritten musical notation for the second system. The top staff is in treble clef and contains two measures of eighth notes with accidentals. The bottom staff is in bass clef and contains a whole note chord with a sharp sign.

Handwritten musical notation for the third system. The top staff is in treble clef and contains a whole note chord with a flat sign. The bottom staff is in bass clef and contains two measures of eighth notes with accidentals.

Handwritten musical notation for the fourth system. The top staff is in treble clef and contains a wavy line. The bottom staff is in bass clef and contains a wavy line.

Handwritten musical notation for the first system. The treble clef staff contains two measures of chords with accidentals (sharps and naturals) and slurs. The bass clef staff contains a melodic line with notes and accidentals (flats and naturals) across two measures.

Handwritten musical notation for the second system. The treble clef staff contains two measures of chords with accidentals and slurs. The bass clef staff contains a melodic line with notes and accidentals across two measures.

Handwritten musical notation for the third system. The treble clef staff contains two measures of chords with accidentals and slurs. The bass clef staff contains a melodic line with notes and accidentals across two measures.

Handwritten musical notation for the fourth system. The treble clef staff contains two measures of chords with accidentals and slurs. The bass clef staff contains a melodic line with notes and accidentals across two measures.

nela brei. (rubato) frei

Handwritten musical notation for the first system. It consists of two staves: a treble staff and a bass staff. The treble staff contains notes with various accidentals (sharps, flats, naturals) and some slurs. The bass staff contains notes with accidentals and some slurs. There are also some handwritten markings like '6' and '4' in the treble staff. The system is divided into three measures by vertical bar lines. Below the staves, there are some handwritten markings that look like 'o' and 'i'.

Handwritten musical notation for the second system. It consists of two staves: a treble staff and a bass staff. The treble staff contains notes with various accidentals and slurs. The bass staff contains notes with accidentals and slurs. The system is divided into three measures by vertical bar lines. Below the staves, there are some handwritten markings that look like 'o' and 'i'.

Handwritten musical notation for the third system. It consists of two staves: a treble staff and a bass staff. The treble staff contains notes with various accidentals and slurs. The bass staff contains notes with accidentals and slurs. The system is divided into three measures by vertical bar lines. Below the staves, there are some handwritten markings that look like 'o' and 'i'.

Handwritten musical notation for the first system, featuring a grand staff with treble and bass clefs. The music includes various notes, rests, and dynamic markings like 'p' and 'pp'.

Handwritten musical notation for the second system, continuing the piece with similar notation and dynamic markings.

Handwritten musical notation for the third system, which includes the word "lange" and a signature "Adolf Scherbaum".