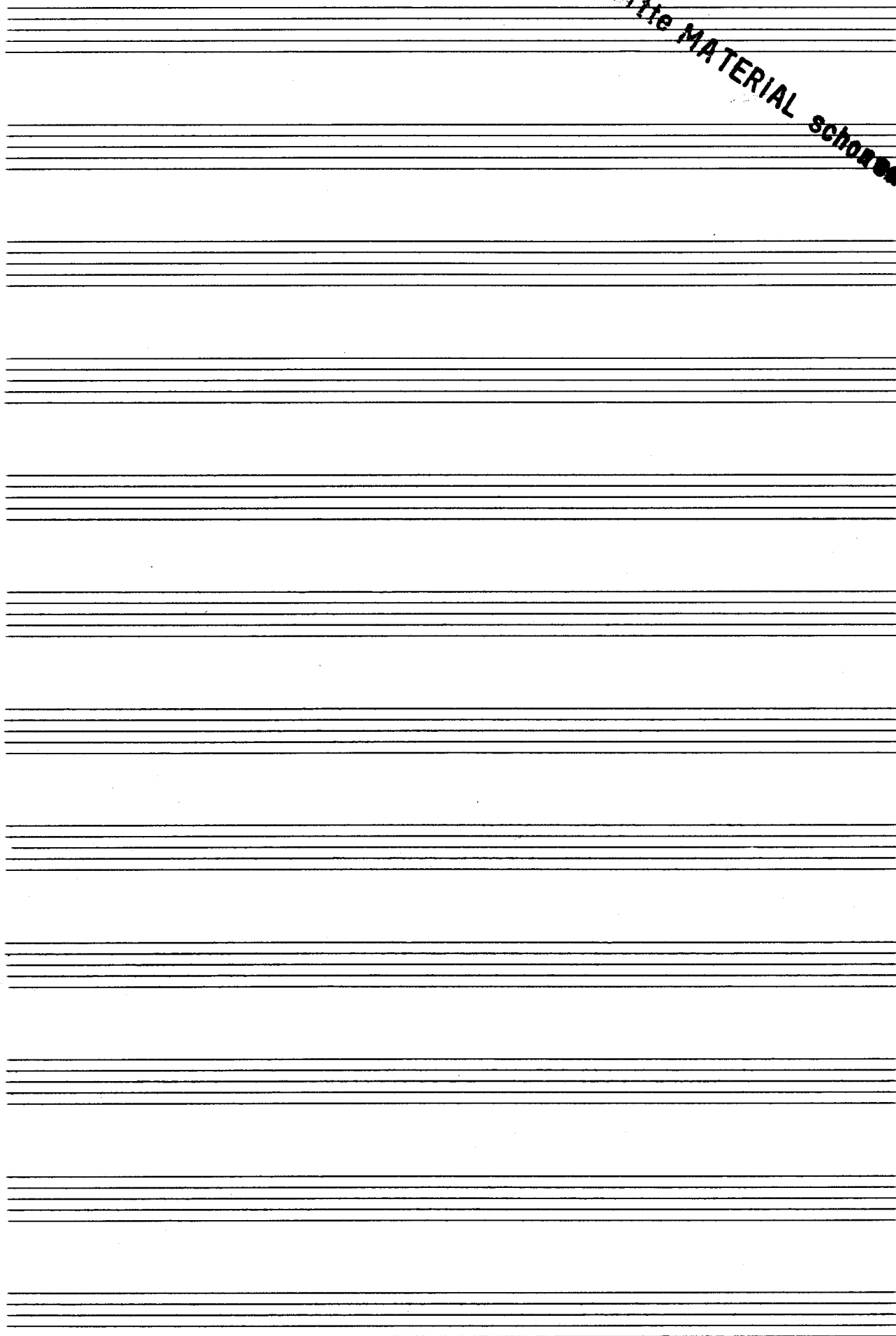


Bitte MATERIAL SCHOEN



frei ausspielen (1) (4)

Handwritten musical notation for the first system. It consists of a treble clef staff and a bass clef staff. The treble staff contains a melodic line with notes, rests, and accidentals (sharps). The bass staff contains a harmonic accompaniment with notes and rests. A large slur covers both staves. The time signature is 4/4. A key signature of one sharp (F#) is indicated. A circled '1' is written above the treble staff, and a circled '4' is written at the end of the system.

Handwritten musical notation for the second system. It consists of a treble clef staff and a bass clef staff. The treble staff contains a melodic line with notes, rests, and accidentals. The bass staff contains a harmonic accompaniment with notes and rests. A large slur covers both staves. A circled '2' is written at the end of the system.

Handwritten musical notation for the third system. It consists of a treble clef staff and a bass clef staff. The treble staff contains a melodic line with notes, rests, and accidentals. The bass staff contains a harmonic accompaniment with notes and rests. A large slur covers both staves. A circled '3' is written at the end of the system.

Bitte MATERIAL schonen

4

Handwritten musical notation for system 4, consisting of two staves. The upper staff contains a melodic line with various notes and accidentals, including a sharp sign. The lower staff contains a bass line with notes and accidentals, including a flat sign.

5

Handwritten musical notation for system 5, consisting of two staves. The upper staff contains a melodic line with notes and accidentals, including a sharp sign. The lower staff contains a bass line with notes and accidentals, including a sharp sign.

26 + ev. mit

Fine

Handwritten musical notation for system 6, consisting of two staves. The upper staff contains a melodic line with notes and accidentals, including a sharp sign. The lower staff contains a bass line with notes and accidentals, including a sharp sign. The system concludes with a 'Fine' marking and a large, stylized flourish.

Prälupe

I.

Handwritten musical notation for the first system of the prelude. It features a grand staff with treble and bass clefs. The key signature has one sharp (F#). The time signature is 3/4. The music consists of three measures. The right hand plays a melody of eighth notes, and the left hand plays a bass line of eighth notes. A dynamic marking 'p' is present. The first measure has a circled '1' above it.

①

Handwritten musical notation for the second system of the prelude. It continues the grand staff notation. The right hand melody continues with eighth notes. The left hand bass line continues with eighth notes. The first measure has a circled '1' above it.

②

Handwritten musical notation for the third system of the prelude. It continues the grand staff notation. The right hand melody continues with eighth notes. The left hand bass line continues with eighth notes. The first measure has a circled '2' above it.

③

Handwritten musical notation for the fourth system of the prelude. It continues the grand staff notation. The right hand melody continues with eighth notes. The left hand bass line continues with eighth notes. The first measure has a circled '3' above it.

Handwritten musical notation for the first system, featuring a treble and bass clef with various notes and rests.

Handwritten musical notation for the second system, including a circled measure number "4" at the end.

Handwritten musical notation for the third system, including a circled measure number "5" at the end.

Handwritten musical notation for the fourth system, ending with a circled "FINE".

2.

Andig

Handwritten musical notation for the first system. It consists of two staves. The top staff is in treble clef and the bottom staff is in bass clef. The time signature is 4/4. A circled 'pp' (pianissimo) dynamic marking is present in the first measure. The music is written in a key with one sharp (F#). The first measure contains a half note G4 and a half note F#4. The second measure contains a quarter note G4, a quarter note F#4, a quarter note E4, and a quarter note D4. The third measure contains a quarter note C4, a quarter note B3, a quarter note A3, and a quarter note G3. The fourth measure contains a quarter note F#3, a quarter note E3, a quarter note D3, and a quarter note C3.

Handwritten musical notation for the second system. It consists of two staves. The top staff is in treble clef and the bottom staff is in bass clef. The music continues from the first system. The first measure contains a quarter note G4, a quarter note F#4, a quarter note E4, and a quarter note D4. The second measure contains a quarter note C4, a quarter note B3, a quarter note A3, and a quarter note G3. The third measure contains a quarter note F#3, a quarter note E3, a quarter note D3, and a quarter note C3. The fourth measure contains a quarter note B2, a quarter note A2, a quarter note G2, and a quarter note F2. A circled '1' is written at the end of the system.

Handwritten musical notation for the third system. It consists of two staves. The top staff is in treble clef and the bottom staff is in bass clef. The music continues from the second system. The first measure contains a quarter note G4, a quarter note F#4, a quarter note E4, and a quarter note D4. The second measure contains a quarter note C4, a quarter note B3, a quarter note A3, and a quarter note G3. The third measure contains a quarter note F#3, a quarter note E3, a quarter note D3, and a quarter note C3. The fourth measure contains a quarter note B2, a quarter note A2, a quarter note G2, and a quarter note F2. A circled '2' is written at the end of the system.

Handwritten musical notation for the fourth system. It consists of two staves. The top staff is in treble clef and the bottom staff is in bass clef. The music continues from the third system. The first measure contains a quarter note G4, a quarter note F#4, a quarter note E4, and a quarter note D4. The second measure contains a quarter note C4, a quarter note B3, a quarter note A3, and a quarter note G3. The third measure contains a quarter note F#3, a quarter note E3, a quarter note D3, and a quarter note C3. The fourth measure contains a quarter note B2, a quarter note A2, a quarter note G2, and a quarter note F2. A circled '3' is written at the end of the system.

4

Handwritten musical notation for measure 4. The treble staff contains a half note G4 with a sharp sign, followed by a quarter note A4 with a flat sign, and a quarter note B4 with a sharp sign. The bass staff contains a half note G3 with a sharp sign, followed by a quarter note A3 with a flat sign, and a quarter note B3 with a sharp sign. The notes are connected by a slur.

5

Handwritten musical notation for measure 5. The treble staff contains a half note G4 with a sharp sign, followed by a quarter note A4 with a sharp sign, and a quarter note B4 with a sharp sign. The bass staff contains a half note G3 with a sharp sign, followed by a quarter note A3 with a flat sign, and a quarter note B3 with a sharp sign. The notes are connected by a slur.

6

7

Handwritten musical notation for measure 6. The treble staff contains a half note G4 with a sharp sign, followed by a quarter note A4 with a sharp sign, and a quarter note B4 with a sharp sign. The bass staff contains a half note G3 with a sharp sign, followed by a quarter note A3 with a flat sign, and a quarter note B3 with a sharp sign. The notes are connected by a slur.

26 + gr. rit...

Handwritten musical notation for measure 7. The treble staff contains a half note G4 with a sharp sign, followed by a quarter note A4 with a sharp sign, and a quarter note B4 with a sharp sign. The bass staff contains a half note G3 with a sharp sign, followed by a quarter note A3 with a flat sign, and a quarter note B3 with a sharp sign. The notes are connected by a slur.

FINE

3 #

breit

①

②

③

④

⑤

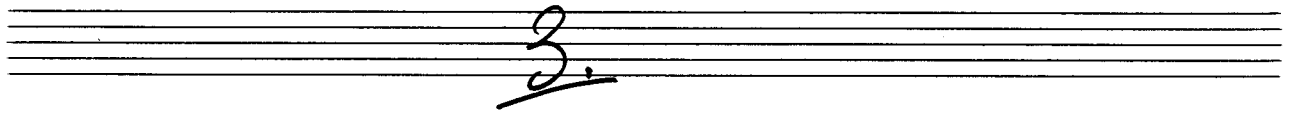
2te rit

⑥

rit

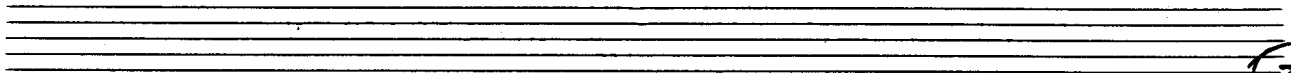
rit.

Für

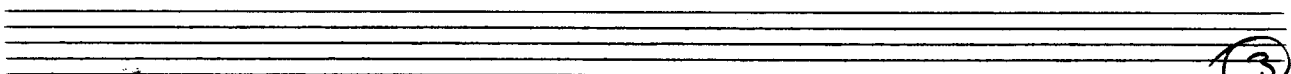


breit

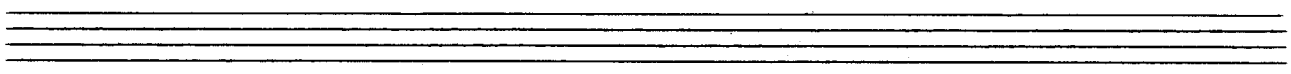
(1)



(2)



(3)



④

⑤

zweiter - ist.

⑥

frei

Fin

4A

3 bis 4+

Presto

①

②

3

Handwritten musical notation for system 3, measures 1-4. The right hand has chords with stems pointing down, and the left hand has a melodic line with slurs.

4

Handwritten musical notation for system 4, measures 1-4. The right hand has a melodic line with slurs, and the left hand has chords with stems pointing down.

5

Handwritten musical notation for system 5, measures 1-4. The right hand has a melodic line with slurs, and the left hand has chords with stems pointing down.

letzte * mit ...

Handwritten musical notation for system 6, measures 1-4. The right hand has chords with stems pointing down, and the left hand has a melodic line with slurs. The system ends with a double bar line and a wavy line.

4

Sehr
Rasch

(ad. libitum
(3-4 spielen))

Handwritten musical notation for the first system. It consists of a grand staff with treble and bass clefs. The first measure starts with a forte dynamic marking 'f'. A slur covers the first three measures. The notes are: Treble clef: G4, A4, B4, C5, B4, A4, G4; Bass clef: G3, A3, B3, C4, B3, A3, G3. The key signature has one sharp (F#) and one flat (C).

Handwritten musical notation for the second system. It consists of a grand staff with treble and bass clefs. A circled '1' is written above the first measure. A slur covers the first three measures. The notes are: Treble clef: G4, A4, B4, C5, B4, A4, G4; Bass clef: G3, A3, B3, C4, B3, A3, G3. The key signature has one sharp (F#) and one flat (C).

Handwritten musical notation for the third system. It consists of a grand staff with treble and bass clefs. A circled '2' is written above the first measure. A slur covers the first three measures. The notes are: Treble clef: G4, A4, B4, C5, B4, A4, G4; Bass clef: G3, A3, B3, C4, B3, A3, G3. The key signature has one sharp (F#) and one flat (C).

3

4

5

6

(2te + rit. ...)

(1) (7) Fine

5 A

breit

①

Handwritten musical notation for system 1, measures 1-2. The notation is written on two staves (treble and bass clef). The first measure contains notes with accidentals (sharps) and a fermata. The second measure continues the melodic line with similar accidentals. The bass staff has notes with accidentals and a fermata. There are some handwritten annotations like '77' and '7' near the first measure.

②

Handwritten musical notation for system 2, measures 3-4. The notation is written on two staves. The first measure has notes with accidentals and a fermata. The second measure continues the melodic line. The bass staff has notes with accidentals and a fermata.

③

Handwritten musical notation for system 3, measures 5-6. The notation is written on two staves. The first measure has notes with accidentals and a fermata. The second measure continues the melodic line with a fermata. The bass staff has notes with accidentals and a fermata. There are some handwritten annotations like '77' and '7' near the first measure.

Handwritten musical notation for system 4. The system consists of two staves. The right staff contains a melodic line with various notes and rests, including a triplet. The left staff contains a bass line with notes and rests. A circled number '4' is written above the first measure. The key signature is two sharps (F# and C#). The time signature is common time (C). The notation includes dynamic markings like 'pp' and 'f'.

Handwritten musical notation for system 5. The system consists of two staves. The right staff contains a melodic line with triplets and a fourth note. The left staff contains a bass line with notes and rests. A circled number '5' is written above the first measure. The key signature is two sharps (F# and C#). The time signature is common time (C). The notation includes dynamic markings like 'pp' and 'f'.

Handwritten musical notation for system 6. The system consists of two staves. The right staff contains a melodic line with notes and rests. The left staff contains a bass line with notes and rests. A circled number '6' is written above the first measure. The key signature is two sharps (F# and C#). The time signature is common time (C). The notation includes dynamic markings like 'pp' and 'f'. The word 'rit' is written above the first measure, and 'Fine' is written at the end of the system. The system ends with a double bar line and a fermata.

Choral

5

①

Handwritten musical notation for the first system. It consists of two staves. The top staff is in treble clef and the bottom staff is in bass clef. The time signature is 4/4. The music begins with a forte (ff) dynamic marking. The first measure contains a half note G#4 in the treble and a half note G#2 in the bass. The second measure contains a half note A#4 in the treble and a half note A#2 in the bass. The third measure contains a half note B#4 in the treble and a half note B#2 in the bass. The fourth measure contains a half note C#5 in the treble and a half note C#3 in the bass. A slur covers the entire system.

②

Handwritten musical notation for the second system. It consists of two staves. The top staff is in treble clef and the bottom staff is in bass clef. The first measure contains a half note D#5 in the treble and a half note D#3 in the bass. The second measure contains a half note E#5 in the treble and a half note E#3 in the bass. The third measure contains a half note F#5 in the treble and a half note F#3 in the bass. The fourth measure contains a half note G#5 in the treble and a half note G#3 in the bass. A slur covers the entire system.

③

Handwritten musical notation for the third system. It consists of two staves. The top staff is in treble clef and the bottom staff is in bass clef. The time signature is 4/4. The first measure contains a half note A#4 in the treble and a half note A#2 in the bass. The second measure contains a half note B#4 in the treble and a half note B#2 in the bass. The third measure contains a half note C#5 in the treble and a half note C#3 in the bass. The fourth measure contains a half note D#5 in the treble and a half note D#3 in the bass. A slur covers the entire system.

Handwritten musical notation for system 4. The system consists of two staves. The right staff contains a melodic line with a circled '4' above it. The left staff contains a bass line with several accidentals (sharps) and a circled '4' above it. The notation includes notes, rests, and dynamic markings such as 'pp'.

Handwritten musical notation for system 5, consisting of two empty staves with a circled '5' at the end.

Handwritten musical notation for system 5. The system consists of two staves. The right staff contains a melodic line with triplets and a circled '5' above it. The left staff contains a bass line with notes and rests.

Handwritten musical notation for system 6. The system consists of two staves. The right staff contains a melodic line with a circled '6' above it. The left staff contains a bass line. The notation includes notes, rests, and dynamic markings such as 'pp'. The system ends with a double bar line and the word 'Fine' written to the right.

Four empty musical staves at the bottom of the page.

passionato

II

1

Sehr frei rubato

2

3

4

8

rubbato breit

rubbato breit

9

rubbato breit

rubbato breit

10

11

rubbato breit

rubbato breit

12

13

rubbato breit

rubbato breit

14
F
Z

6

sehr ruhig

Handwritten musical score for the first system, measures 1-4. The right hand has a melodic line with a fermata over the first measure and a slur over the next three. The left hand has a bass line with a fermata over the first measure and a slur over the next three. The key signature has one flat, and the time signature is common time.

1

Handwritten musical score for the second system, measures 5-8. The right hand continues the melodic line with a slur over the last three measures. The left hand continues the bass line with a slur over the last three measures.

Handwritten musical score for the third system, measures 9-12. The right hand continues the melodic line with a slur over the last three measures. The left hand continues the bass line with a slur over the last three measures.

2


Handwritten musical score for the fourth system, measures 13-16. The right hand continues the melodic line with a slur over the last three measures. The left hand continues the bass line with a slur over the last three measures.

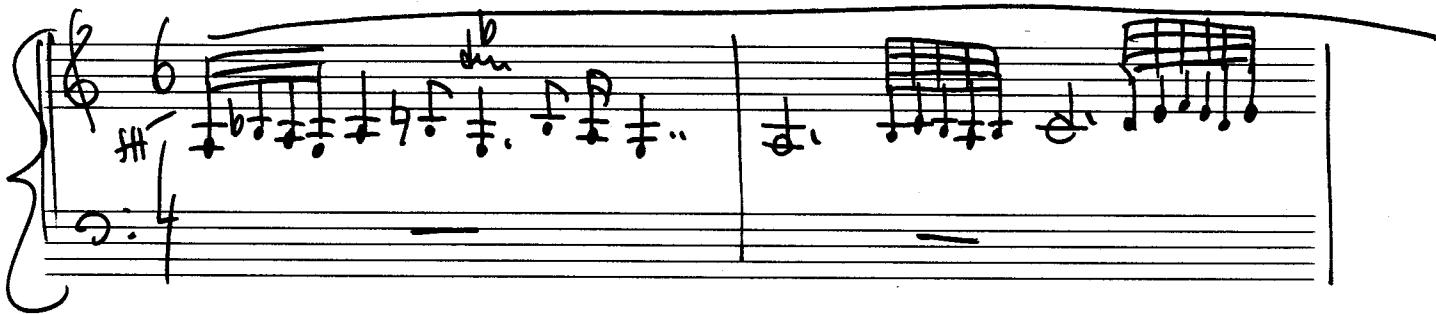
Handwritten musical notation for the first system. The treble staff contains a melodic line with a series of eighth notes and quarter notes, some with accidentals (sharps and naturals). The bass staff provides a simple accompaniment with chords and moving lines.

Handwritten musical notation for the second system. The treble staff continues the melodic line with more complex rhythmic patterns and accidentals. The bass staff accompaniment includes some chords with accidentals. A circled number '3' is written at the end of the system.

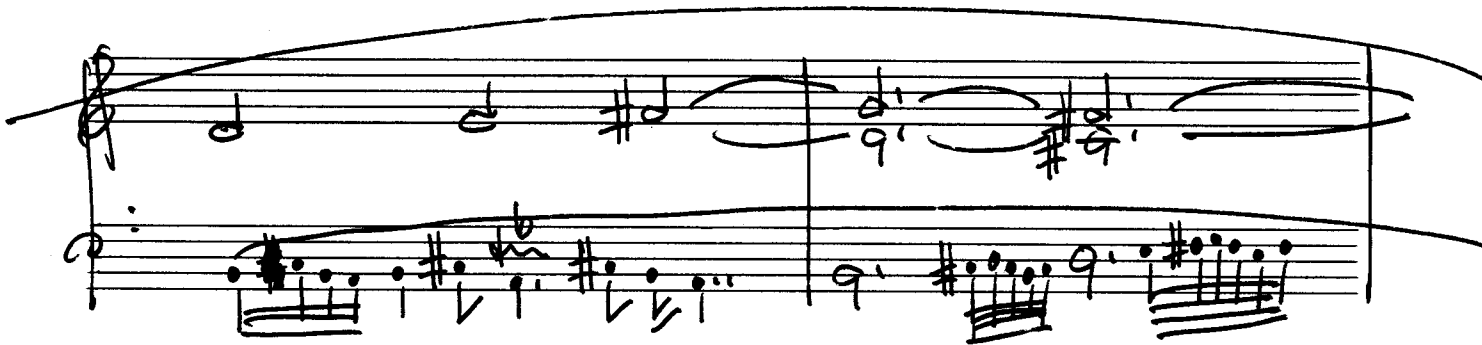
Handwritten musical notation for the third system. The treble staff features a melodic line with a prominent trill-like passage. The bass staff accompaniment consists of chords and moving lines.

Handwritten musical notation for the fourth system. The treble staff has a melodic line that concludes with a final chord. The bass staff accompaniment includes chords and moving lines. Performance markings include "2te + gr. rit." in the middle and "five" with a flourish at the end.


frei (appassionato)  ①




②



③



④



f *frei*

5

6

7

8

FINE

gut...

7

frei

frei

guitrato

breit

breit

guitrato (frei)

Presto (sehr rasch - accel.)

Presto (sehr rasch - accel.)

3

breit

4

accel.

breit

5

Fine

Fine

8#

Allegro spiritato

(3 - 4 + spielen)

①

②

③

4

5

6

7

Presto

⑧

①

②

③

④

5

Handwritten musical notation for measure 5. The top staff is in treble clef and the bottom staff is in bass clef. The key signature has one sharp (F#). The notation includes eighth and sixteenth notes in the treble staff and chords in the bass staff. A large brace spans across both staves.

6

Handwritten musical notation for measure 6. The top staff is in treble clef and the bottom staff is in bass clef. The key signature has one sharp (F#). The notation includes eighth and sixteenth notes in the treble staff and chords in the bass staff. A large brace spans across both staves.

7

Handwritten musical notation for measure 7. The top staff is in treble clef and the bottom staff is in bass clef. The key signature has one sharp (F#). The notation includes dotted notes in the treble staff and chords in the bass staff.

8

Handwritten musical notation for measure 8. The top staff is in treble clef and the bottom staff is in bass clef. The key signature has one sharp (F#). The notation includes long horizontal lines in the treble staff and chords in the bass staff. A large brace spans across both staves.

26+
G.P.
||

SCHLUSS

*Sehr
volles Werk*

gr. rit.

lange

Wien 1960-61

*Adolf
Scherbaum*