

Sonatine 1961  
für Bratsche und  
Klavier (oder  
Cembalo)

A. Scherbaum

**Notenheft**

Liz 1961

Sonatine 1964 für  
Bratsche und Klavier  
(oder Cembalo)

A. Scherbaum

①

lento

Bratsche

KLAVIER

Handwritten musical score for the first system. The Bratsche part is in bass clef with a key signature of one sharp (F#) and a common time signature. It begins with a dynamic marking of *p* and a slur over the first two measures. The Klavier part is in treble clef with a key signature of one sharp and a common time signature. It begins with a dynamic marking of *p* and a slur over the first two measures. The bass line consists of chords, with a dynamic marking of *p* and a slur over the first two measures.

Handwritten musical score for the second system. The Bratsche part continues with a slur and a dynamic marking of *p*. The Klavier part continues with a slur and a dynamic marking of *p*. The bass line consists of chords, with a dynamic marking of *p* and a slur over the first two measures.

Handwritten musical score for the third system. The Bratsche part begins with a dynamic marking of *mf* and a slur. The Klavier part begins with a dynamic marking of *mf* and a slur. The bass line consists of chords, with a dynamic marking of *mf* and a slur over the first two measures.

2

Handwritten musical score for the first system, measures 1-4. The system includes a treble clef staff with a melodic line and a grand staff (treble and bass clefs) with accompaniment. A circled 'p' is written in the first measure of the grand staff. A slur covers the entire system.

Handwritten musical score for the second system, measures 5-8. The system includes a treble clef staff with a melodic line and a grand staff with accompaniment. A circled 'p' is written in the first measure of the grand staff. A 'cresc.' marking is present in the second measure of the grand staff. A slur covers the entire system.

3

Handwritten musical score for the third system, measures 9-12. The system includes a treble clef staff with a melodic line and a grand staff with accompaniment. A circled '3' is written in the first measure of the treble staff. A circled 'p' is written in the first measure of the grand staff. A slur covers the entire system.

3

Handwritten musical score for measures 3 and 4. The top staff is in bass clef with a circled '3' above it. The bottom two staves are in treble and bass clefs. Measure 3 shows a whole note chord in the bass clef and a half note chord in the treble clef. Measure 4 contains a complex melodic line in the bass clef and chords in the treble clef.

4

Handwritten musical score for measures 5 and 6. The top staff is in bass clef with a circled '4' above it. The bottom two staves are in treble and bass clefs. Measure 5 features a melodic line in the bass clef and chords in the treble clef. Measure 6 shows a whole note chord in the bass clef and a half note chord in the treble clef.

Handwritten musical score for measures 7 and 8. The top staff is in bass clef. The bottom two staves are in treble and bass clefs. Measure 7 contains a melodic line in the bass clef and chords in the treble clef. Measure 8 shows a melodic line in the bass clef and chords in the treble clef.

Handwritten musical score for the first system, measures 1-2. The system includes a treble clef staff with a B-flat key signature and a common time signature. The first measure contains a series of sixteenth notes (4444) and a fermata. The second measure contains a half note and a quarter note. The piano accompaniment consists of two staves with various chords and melodic lines. A circled number '5' is written at the end of the system.

Handwritten musical score for the second system, measures 3-4. The system includes a treble clef staff with a B-flat key signature and a common time signature. The first measure contains a series of sixteenth notes with a sharp sign and a fermata. The second measure contains a half note and a quarter note. The piano accompaniment consists of two staves with various chords and melodic lines. A circled number '6' is written at the end of the system.

Handwritten musical score for the third system, measures 5-6. The system includes a treble clef staff with a B-flat key signature and a common time signature. The first measure contains a series of sixteenth notes (4444) and a fermata. The second measure contains a half note and a quarter note. The piano accompaniment consists of two staves with various chords and melodic lines. A circled number '6' is written at the end of the system.



8

Handwritten musical score for the first system. It consists of three staves: a treble clef staff with a soprano line, a grand staff (treble and bass clefs) for piano accompaniment, and a bass clef staff for a lower instrument. The music features a melodic line with a slur and the word "din" written below it. Dynamic markings include *pp* and *p*. There are also some handwritten notes like "44 44" in the upper right.

9

Handwritten musical score for the second system. It features a grand staff for piano accompaniment and a bass clef staff. The piano part has a *ppp* dynamic marking. The lower staff has a wavy line and the word "großes nit... din" written above it. There are some handwritten notes like "7" and "6" in the lower staff.

FINE

Handwritten musical score for the third system. It features a grand staff for piano accompaniment and a bass clef staff. The piano part has a *ppp* dynamic marking. The lower staff has a wavy line and the word "lunga" written above it. There are some handwritten notes like "pp" and "7" in the lower staff.



2

*in: unist Allegro con brio*

Handwritten musical score for the first system, measures 1-4. It features a treble clef with a key signature of one flat and a 4/4 time signature. The music includes a piano (p) dynamic marking and a slur over the first four measures. The bass clef part consists of chords and single notes.

Handwritten musical score for the second system, measures 5-8. It features a treble clef with a key signature of one flat and a 4/4 time signature. The music includes mezzo-forte (mf) and forte (f) dynamic markings and a slur over the first four measures. A boxed number '1' is in the top right corner. The bass clef part consists of chords and single notes.

Handwritten musical score for the third system, measures 9-12. It features a treble clef with a key signature of one flat and a 4/4 time signature. The music includes a key signature change to two flats and a complex melodic line in the treble clef. The bass clef part consists of chords and single notes.

Handwritten musical score for the first system. The top staff is a treble clef with a melodic line. The bottom two staves are a grand staff with piano accompaniment. The system is marked with a circled '2' at the end.

Handwritten musical score for the second system. The top staff is a treble clef with a melodic line. The bottom two staves are a grand staff with piano accompaniment. The system is marked with a circled 'P' at the end.

Handwritten musical score for the third system. The top staff is a treble clef with a melodic line. The bottom two staves are a grand staff with piano accompaniment. The system is marked with a circled '3' at the end.

*Simple chest...* →

Handwritten musical score for the first system. The treble clef staff contains a melodic line starting with a dynamic marking *pp* and a fermata over the first measure. The piano accompaniment, shown in a grand staff, also begins with *pp* and consists of a steady eighth-note pattern in the right hand and chords in the left hand.

Handwritten musical score for the second system. The treble clef staff continues the melodic line with a dynamic marking *mf* and concludes with a circled number '4'. The piano accompaniment continues with similar rhythmic patterns.

Handwritten musical score for measures 5 and 6. Measure 5 features a treble clef with a melodic line starting with a circled 'f' dynamic. The piano part below has a circled 'f' dynamic and a circled '5' in the top right corner. Measure 6 continues the melodic line with a fermata and a circled 'f' dynamic.

Handwritten musical score for measures 7 and 8. Measure 7 features a treble clef with a melodic line and a piano part with a circled 'f' dynamic. Measure 8 continues the melodic line with a fermata and a circled 'f' dynamic. A circled '6' is in the top right corner.

Handwritten musical score for measures 9 and 10. Measure 9 features a treble clef with a melodic line and a piano part with a circled 'f' dynamic. Measure 10 continues the melodic line with a fermata and a circled 'f' dynamic. A circled '7' is in the top right corner.

Handwritten musical score for measures 7 and 8. Measure 7 is circled with a '7'. The score includes a treble clef staff with a sharp sign and a fermata, and a grand staff with piano accompaniment. Measure 8 is circled with an '8' and features a fermata in the treble clef staff.

Handwritten musical score for measures 9 and 10. Measure 9 is circled with a '9'. The score includes a treble clef staff with a fermata and a dynamic marking 'D.C.' (Da Capo). The grand staff includes piano accompaniment with dynamic markings 'p' and 'V'.

Handwritten musical score for measures 11 and 12. Measure 11 is circled with an '11'. The score includes a treble clef staff with a fermata and a dynamic marking 'p'. The grand staff includes piano accompaniment with dynamic markings 'p' and 'V'.

Handwritten musical score for measures 10-11. The system includes a treble clef staff with a melodic line and a grand staff (piano and bass clefs) with accompaniment. Measure 10 starts with a mezzo-forte (*mf*) dynamic and a half note G4. Measure 11 features a forte (*f*) dynamic and a half note G4 with a flat. A circled "10" is in the top right corner.

Handwritten musical score for measures 12-13. The system includes a treble clef staff with a melodic line and a grand staff (piano and bass clefs) with accompaniment. Measure 12 starts with a mezzo-forte (*mf*) dynamic and a half note G4. Measure 13 features a forte (*f*) dynamic and a half note G4 with a flat. A circled "11" is in the top right corner.

Handwritten musical score for measures 14-15. The system includes a treble clef staff with a melodic line and a grand staff (piano and bass clefs) with accompaniment. Measure 14 starts with a mezzo-forte (*mf*) dynamic and a half note G4. Measure 15 features a forte (*f*) dynamic and a half note G4 with a flat. A circled "14" is in the top right corner.

Handwritten musical score for the first system. It consists of a violin part (top staff) and a piano accompaniment (bottom two staves). The piano part features dynamic markings such as *ff* and *din*. The music is written in a key with one sharp (F#) and includes various note values and rests.

Handwritten musical score for the second system. It includes a violin part and piano accompaniment. A circled number '12' is present in the upper right corner. The piano part has dynamic markings like *p* and *pp*. The notation includes slurs and various note values.

Handwritten musical score for the third system. It features a violin part and piano accompaniment. The piano part includes dynamic markings such as *pp*. The music continues with various note values and rests.

Handwritten musical score for measures 13 and 14. Measure 13 shows a treble clef staff with a melodic line and a piano accompaniment. Measure 14 continues the melodic line with a fermata over the final note.

Handwritten musical score for measures 15 and 16. Measure 15 features a treble clef staff with a melodic line and a piano accompaniment. Measure 16 continues the melodic line with a fermata over the final note.

Handwritten musical score for measures 17 and 18. Measure 17 shows a treble clef staff with a melodic line and a piano accompaniment. Measure 18 continues the melodic line with a fermata over the final note.



Handwritten musical score for measures 16-17. Measure 16 shows a treble clef staff with a melodic line and a piano accompaniment in the bass clef. Measure 17 continues the piece with similar notation. A circled '16' is in the top right corner.

Handwritten musical score for measures 18-19. Measure 18 shows a treble clef staff with a melodic line and a piano accompaniment in the bass clef. Measure 19 continues the piece with similar notation. A circled '17' is in the top right corner.

Handwritten musical score for measures 20-21. Measure 20 shows a treble clef staff with a melodic line and a piano accompaniment in the bass clef. Measure 21 continues the piece with similar notation. A circled '18' is in the top right corner.

( allmählich Tempo steigen bis Presto

(frei) steigern bis Presto

19

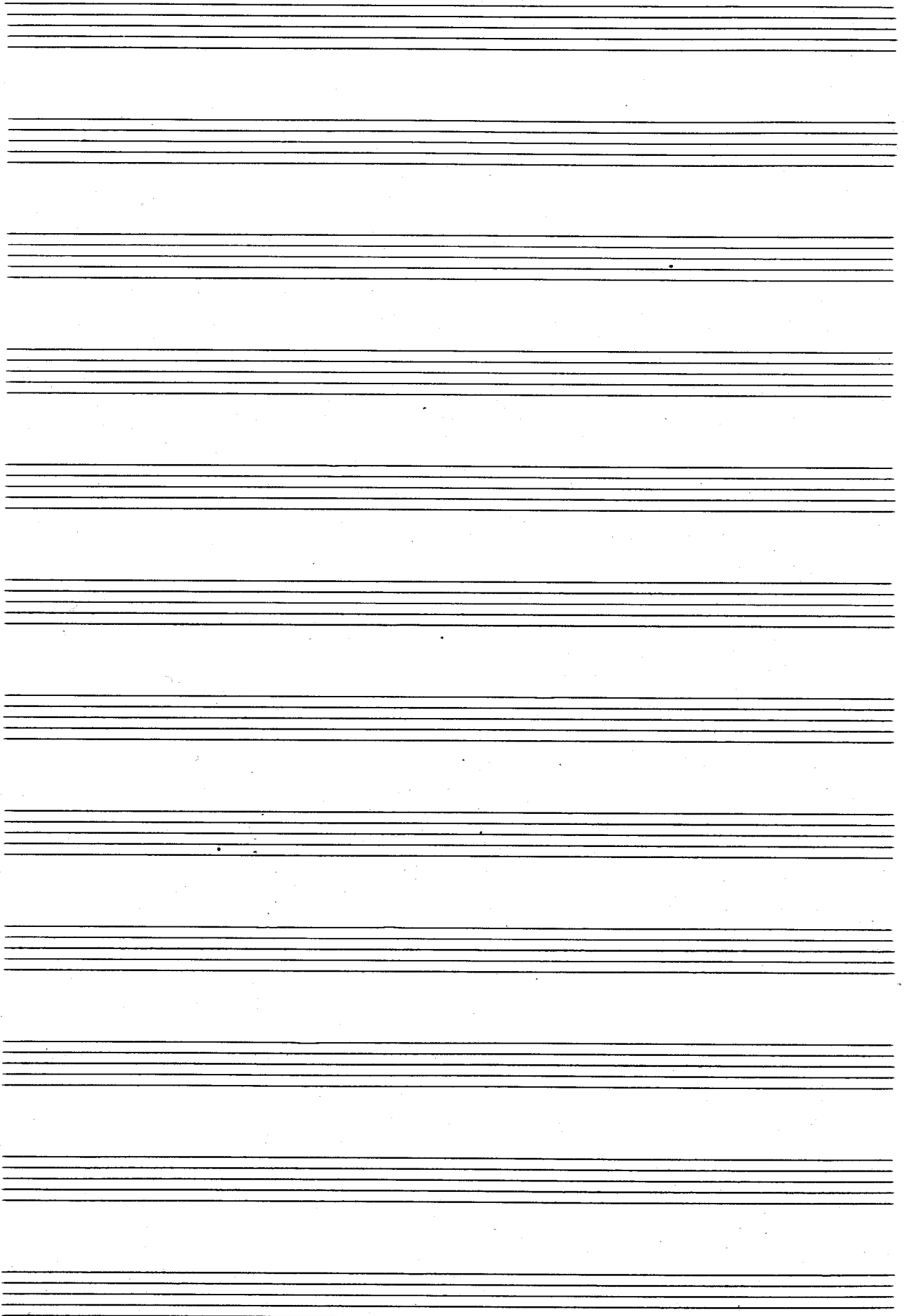
**PRESTO** ( *ppp sempre cresc... —* )

Handwritten musical score for the first system. The top staff is for the violin, starting with a forte dynamic (f) and a fermata. The bottom two staves are for the piano, featuring a complex chordal texture with various accidentals and a fermata. A circled 'f' is written below the piano part. A circled '21' is in the top right corner.

Handwritten musical score for the second system, primarily consisting of piano accompaniment. It features a series of chords in the left hand and rests in the right hand, with a circled 'f' and a circled '21'.

Handwritten musical score for the first system, consisting of three staves. The top staff is in bass clef with a treble clef sign above it, containing a melodic line with slurs and accidentals. The middle and bottom staves are in grand staff (treble and bass clefs) and contain chordal accompaniment with slurs and accents.

Handwritten musical score for the second system, consisting of three staves. The top staff is in treble clef with a key signature of one sharp (F#) and a common time signature (C). The middle and bottom staves are in grand staff (treble and bass clefs) and contain chordal accompaniment with slurs and accents. To the right of the staves, there is handwritten text: "Luz", "1961", and "Adolf Scherbaum".



23

Sonatine (1) für Bratsche und Klavier  
(oder Cembalo)

Lento

Handwritten musical score for the first system. The top staff is in bass clef with a 9/8 time signature. The bottom staff is in bass clef. The music features various notes, rests, and dynamic markings such as 'p' and 'f'. There are circled numbers 1 and 2, and a circled 'P'.

Handwritten musical score for the second system. The top staff is in treble clef. The bottom staff is in bass clef. The music features various notes, rests, and dynamic markings such as 'p' and 'f'. There are circled numbers 3 and 4.

Handwritten musical score for the third system. The top staff is in treble clef. The bottom staff is in bass clef. The music features various notes, rests, and dynamic markings such as 'f', 'dim', and 'pp'. There is a circled number 5.

Handwritten musical notation on a single staff in bass clef. It begins with a treble clef-like symbol and a key signature of one sharp (F#). The notation includes a series of notes with slurs and accents, and dynamic markings *pp* and *mf*. A circled number 6 is written at the end of the staff.

Handwritten musical notation on a single staff in bass clef. It starts with a treble clef-like symbol and a key signature of one sharp. The notation features a long slur over a series of notes, with dynamic markings *f* and *mf*.

Handwritten musical notation on a single staff in bass clef. It begins with a treble clef-like symbol and a key signature of one sharp. The notation includes notes with slurs and accents, and dynamic markings *mf*.

Handwritten musical notation on a single staff in bass clef. It starts with a treble clef-like symbol and a key signature of one sharp. The notation includes notes with slurs and accents, and dynamic markings *pp*. A circled number 8 is written at the end of the staff.

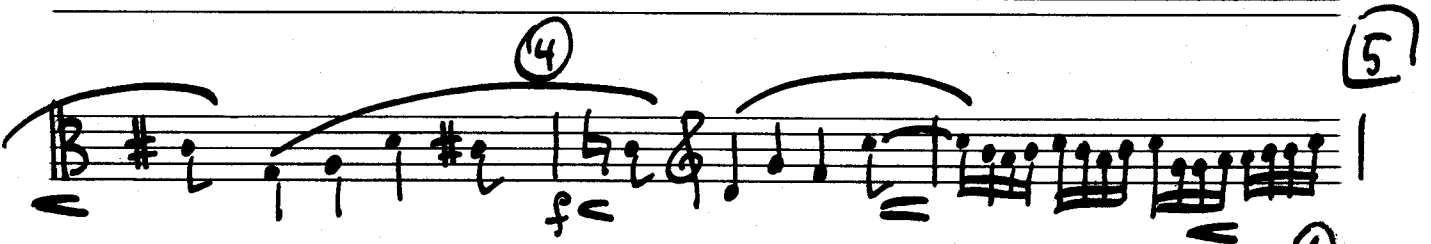
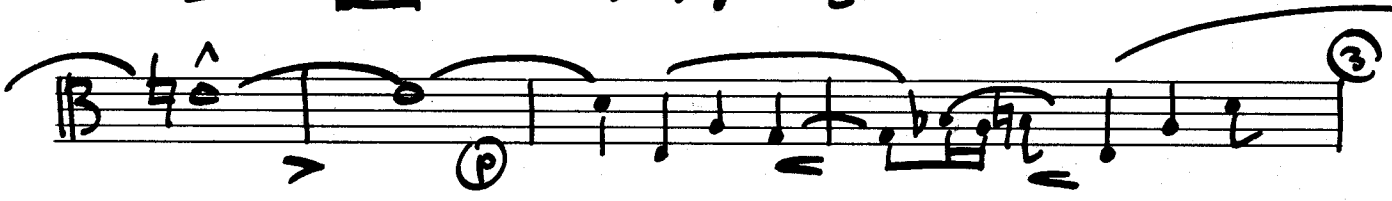
Handwritten musical notation on a single staff in bass clef. It begins with a treble clef-like symbol and a key signature of one sharp. The notation includes a double bar line with a '2' above it, and dynamic markings *pp* and *rit*. A circled number 9 is written at the end of the staff.

Handwritten musical notation on a single staff in bass clef. It starts with a treble clef-like symbol and a key signature of one sharp. The notation includes notes with slurs and accents, and dynamic markings *pp* and *lunga*. A circled word "FINE" is written at the end of the staff.



②

*Allegro con brio*



D.c.

(allmählich Tempo steigern bis Presto)

(zwei - steigern bis Presto)

PRESTO

1961

Adolf  
Scherbaum