

Präludien für
gr. Orgel

Notenheft

Präludien für
Orgel

August Wien 1960

Adolf Scherbaum

breit

Handwritten musical notation for the first system, measures 1-4. It features a treble and bass clef, a key signature of one sharp (F#), and a 4/4 time signature. The music consists of quarter and eighth notes with various accidentals. A circled '1' is at the end of the system.

Handwritten musical notation for the second system, measures 5-8. It continues the piece with similar notation. A circled '2' is at the end of the system. The word "Fine" is written in the right margin.

Handwritten musical notation for the third system, measures 9-12. It continues the piece with similar notation. A circled '3' is at the end of the system.

Handwritten musical notation for the first system, consisting of two staves. The upper staff contains a melodic line with notes and rests, while the lower staff contains a bass line with notes and rests. There are several curved lines and markings above and below the staves, possibly indicating phrasing or performance instructions.

Handwritten musical notation for the second system, consisting of two staves. A circled number '4' is written above the upper staff. The notation includes notes, rests, and various markings, including a large '4' written vertically between the staves.

Handwritten musical notation for the third system, consisting of two staves. A circled number '5' is written above the upper staff. The notation includes notes, rests, and various markings. To the right of the staves, the text "P.C. ad Fine" is written vertically.

Four empty musical staves at the bottom of the page, arranged vertically.

p
 ①

②

③

Handwritten musical notation for the first system, measures 1-4. The system is enclosed in a large hand-drawn oval. The treble clef staff contains notes with accidentals (sharps and naturals). The bass clef staff contains chords and some melodic fragments. A circled number '4' is in the top right corner.

Handwritten musical notation for the second system, measures 5-7. The treble clef staff shows a melodic line with various accidentals. The bass clef staff shows chords. A large hand-drawn oval spans across the system.

Handwritten musical notation for the third system, measures 8-9. Measure 8 has a circled number '5' above it. The notation includes a 'D.C.' marking and some complex chordal structures.

Handwritten musical notation for the fourth system, measures 10-11. The system ends with a double bar line and a wavy line. The text "ev. gut..." is written below the first staff.

Maestoso

Handwritten musical notation for the first system. It consists of two staves. The top staff is in treble clef and the bottom in bass clef. The music is in G major. The first measure has a treble staff with a quarter note G, a quarter note A, a quarter note B, and a quarter note C, with a sharp sign above the first measure. The bass staff has a whole rest. The second measure has a treble staff with a quarter note D, a quarter note E, a quarter note F, and a quarter note G, with a sharp sign above the first measure. The bass staff has a quarter note G, a quarter note A, a quarter note B, and a quarter note C. The third measure has a treble staff with a quarter note G, a quarter note A, a quarter note B, and a quarter note C, with a sharp sign above the first measure. The bass staff has a quarter note D, a quarter note E, a quarter note F, and a quarter note G. Dynamic markings 'rubbato', 'breit', and 'rubbato' are written below the staves. There are also some handwritten numbers '3' and '4' above the notes.

Handwritten musical notation for the second system. It consists of two staves. The top staff is in treble clef and the bottom in bass clef. The music is in G major. The first measure has a treble staff with a quarter note G, a quarter note A, a quarter note B, and a quarter note C, with a sharp sign above the first measure. The bass staff has a quarter note G, a quarter note A, a quarter note B, and a quarter note C. The second measure has a treble staff with a quarter note D, a quarter note E, a quarter note F, and a quarter note G, with a sharp sign above the first measure. The bass staff has a quarter note G, a quarter note A, a quarter note B, and a quarter note C. The third measure has a treble staff with a quarter note G, a quarter note A, a quarter note B, and a quarter note C, with a sharp sign above the first measure. The bass staff has a quarter note D, a quarter note E, a quarter note F, and a quarter note G. Dynamic markings 'breit' and 'rubbato' are written below the staves. There is a circled '1' above the second measure.

Handwritten musical notation for the third system. It consists of two staves. The top staff is in treble clef and the bottom in bass clef. The music is in G major. The first measure has a treble staff with a quarter note G, a quarter note A, a quarter note B, and a quarter note C, with a sharp sign above the first measure. The bass staff has a quarter note G, a quarter note A, a quarter note B, and a quarter note C. The second measure has a treble staff with a quarter note D, a quarter note E, a quarter note F, and a quarter note G, with a sharp sign above the first measure. The bass staff has a quarter note G, a quarter note A, a quarter note B, and a quarter note C. The third measure has a treble staff with a quarter note G, a quarter note A, a quarter note B, and a quarter note C, with a sharp sign above the first measure. The bass staff has a quarter note D, a quarter note E, a quarter note F, and a quarter note G. Dynamic markings 'breit', 'rit', and 'p.' are written above the staves. The word 'Fine' is written at the end of the piece. There is a circled '2' above the final measure. Below the staves, the text 'letzte + ev. rit' is written.

rassch

breit

3

rassch

(accel...)

rit...

4

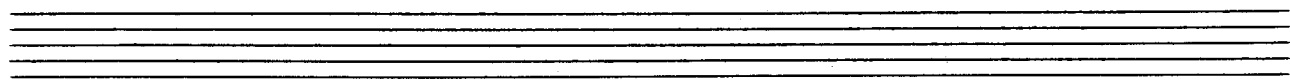
breit

5

p.c.

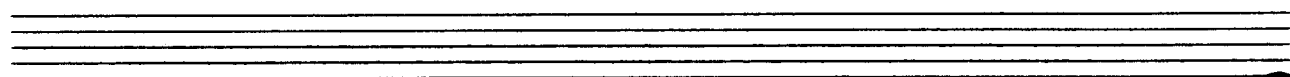
al

Fine

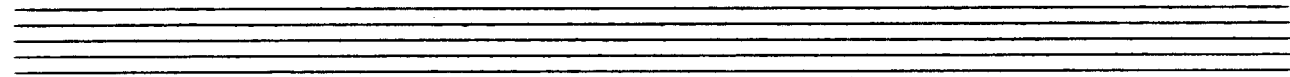


ad lib
ruhig

①



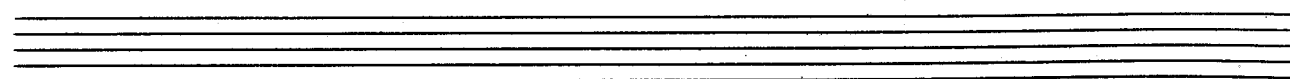
②

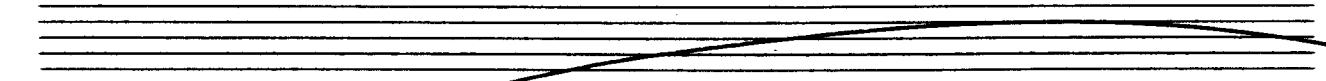
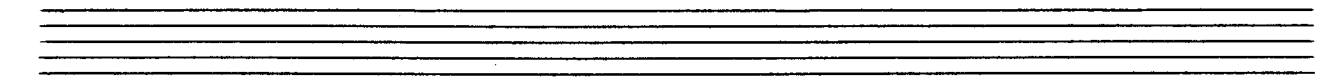


③

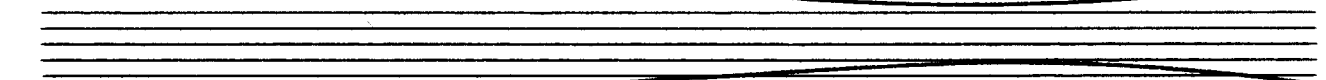
Fine

letzte x großes m.





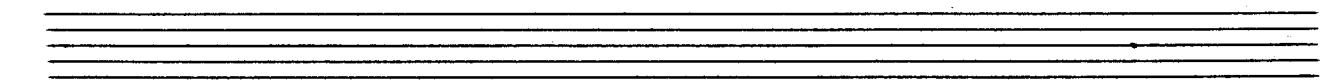
Handwritten musical notation for the first system, measures 3 and 4. The notation is written on a grand staff with treble and bass clefs. Measure 3 is circled with the number 3, and measure 4 is circled with the number 4. The music features a melodic line in the right hand and a supporting bass line in the left hand.



Handwritten musical notation for the second system, measures 5 and 6. The notation is written on a grand staff with treble and bass clefs. Measure 6 is circled with the number 6. The music continues with a melodic line in the right hand and a supporting bass line in the left hand.



Handwritten musical notation for the third system, measures 7 and 8. The notation is written on a grand staff with treble and bass clefs. Measure 8 is circled with the number 8. The music concludes with a final cadence. The word "Fine" is written at the end of the piece. There are some handwritten annotations, including "D.S." and "al" above the final measure.



breit

1

rasch

2

breit *rasch*

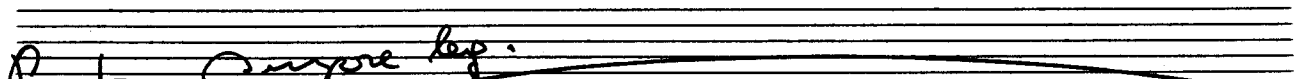
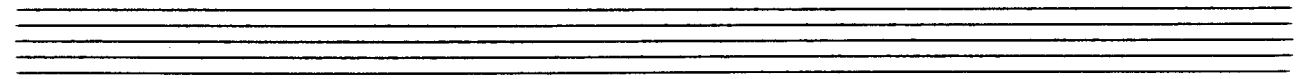
3

Handwritten musical notation on a grand staff. The word "brev" is written above the first staff. The notation includes various notes, rests, and dynamic markings.

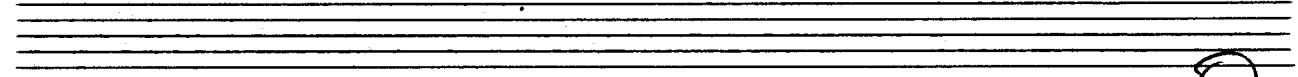
Handwritten musical notation on a grand staff. The word "D.C." is written above the right side of the staff. The word "al Fine" is written vertically on the far right. The notation includes various notes, rests, and dynamic markings.

Handwritten musical notation on a grand staff. The notation includes various notes, rests, and dynamic markings.

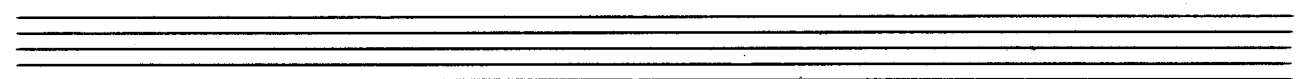
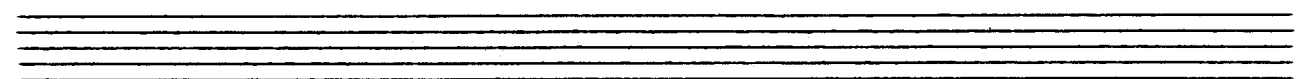
Handwritten musical notation on a grand staff. The word "Fine" is written above the right side of the staff. The notation includes various notes, rests, and dynamic markings.



Presto sempre leg.



1

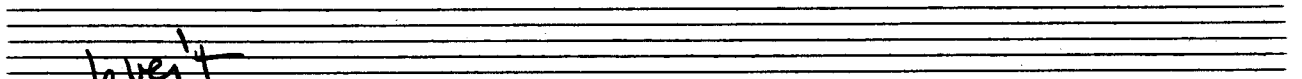
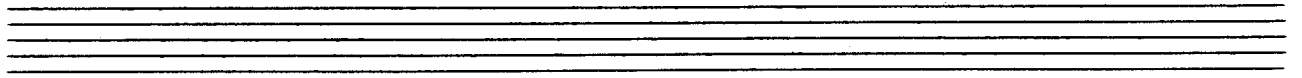


Handwritten musical notation for the first system, measures 2 and 3. The right hand has a melodic line with slurs and a fermata at the end of measure 3. The left hand has a bass line with slurs and a fermata at the end of measure 3. Circled numbers 2 and 3 are above the staves.

Handwritten musical notation for the second system, measures 4 and 5. The right hand has a melodic line with slurs and a fermata at the end of measure 5. The left hand has a bass line with slurs and a fermata at the end of measure 5. A circled number 4 is above the staff.

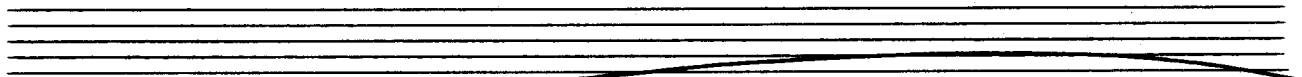
Handwritten musical notation for the third system, measures 6 and 7. The right hand has a melodic line with slurs and a fermata at the end of measure 7. The left hand has a bass line with slurs and a fermata at the end of measure 7. A circled number 5 is above the staff. The text "p.c. ad" is written at the bottom right.

Handwritten musical notation for the fourth system, measures 8 and 9. The right hand has a melodic line with slurs and a fermata at the end of measure 9. The left hand has a bass line with slurs and a fermata at the end of measure 9. The word "fine" is written at the end of the system.

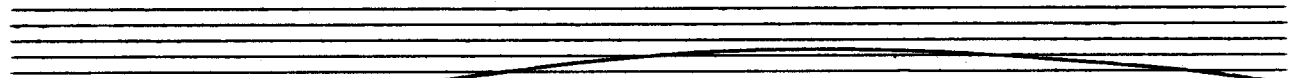


buer

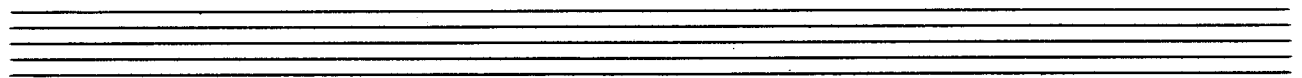
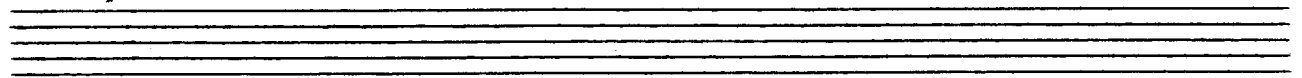
Handwritten musical notation for the first system. The treble clef staff contains a melodic line with notes and accidentals (flats and naturals). The bass clef staff contains a bass line with notes and accidentals. A circled plus sign (+) is written in the left margin. A large slur covers the entire system.



Handwritten musical notation for the second system. The treble clef staff contains a melodic line with notes and accidentals. The bass clef staff contains a bass line with notes and accidentals. A circled number 1 (1) is written in the right margin. A large slur covers the entire system.



Handwritten musical notation for the third system. The treble clef staff contains a melodic line with notes and accidentals. The bass clef staff contains a bass line with notes and accidentals. A large slur covers the entire system.



letzte + großes gut ②
Five

③

④

⑤ D.C.

weit

1

2

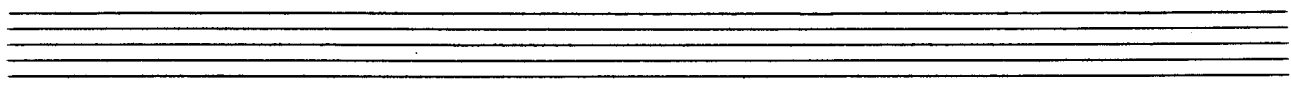
3

Fine

Handwritten musical notation for the first system. The treble clef staff contains a melodic line with notes and accidentals (sharps and naturals). The bass clef staff contains a bass line with notes and accidentals, including a sharp sign. A large slur covers the entire system.

Handwritten musical notation for the second system. The treble clef staff continues the melodic line. A circled '4' is written above the staff. The bass clef staff contains notes and accidentals. A large slur covers the entire system.

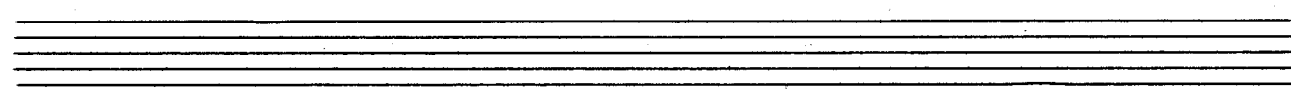
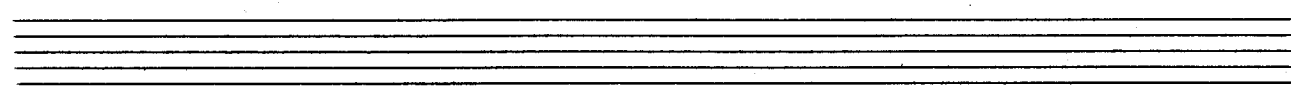
Handwritten musical notation for the third system. The treble clef staff contains notes and accidentals. The bass clef staff contains notes and accidentals, including a sharp sign. The system ends with a double bar line. To the right of the double bar line, the text "p.c." and "ad fine" is written. A large slur covers the entire system.



sehr ruhig



letztes pr. mit... Fine



Handwritten musical notation for the first system, featuring a grand staff with treble and bass clefs. The music is in G major and consists of three measures. The first measure has a treble clef with notes G4, A4, B4, C5 and a bass clef with notes G3, A3, B3, C4. The second measure has a treble clef with notes G4, A4, B4, C5 and a bass clef with notes G3, A3, B3, C4. The third measure has a treble clef with notes G4, A4, B4, C5 and a bass clef with notes G3, A3, B3, C4. A large slur covers the entire system.

Handwritten musical notation for the second system, featuring a grand staff with treble and bass clefs. The music is in G major and consists of four measures. The first measure has a treble clef with notes G4, A4, B4, C5 and a bass clef with notes G3, A3, B3, C4. The second measure has a treble clef with notes G4, A4, B4, C5 and a bass clef with notes G3, A3, B3, C4. The third measure has a treble clef with notes G4, A4, B4, C5 and a bass clef with notes G3, A3, B3, C4. The fourth measure has a treble clef with notes G4, A4, B4, C5 and a bass clef with notes G3, A3, B3, C4. A large slur covers the entire system. The system ends with a double bar line and a repeat sign. To the right of the system, there are handwritten annotations: "2. x", "D.C.", "al.", and "Fine".

Five empty grand staves for musical notation.

leber rauschig

Handwritten musical notation for the first system. The treble clef staff contains a melodic line with notes and accidentals, including a sharp sign. The bass clef staff contains a bass line with notes and a circled 'p' dynamic marking. A large slur covers both staves.

Handwritten musical notation for the second system. The treble clef staff contains a melodic line with notes and accidentals. The bass clef staff contains a bass line with notes and a circled '1' marking. A large slur covers both staves.

Handwritten musical notation for the third system. The treble clef staff contains a melodic line with notes and accidentals. The bass clef staff contains a bass line with notes and a circled '2' marking. A large slur covers both staves.

lehter + rit.

Handwritten musical notation for the fourth system. The treble clef staff contains a melodic line with notes and accidentals. The bass clef staff contains a bass line with notes and a circled '3' marking. A large slur covers both staves. The text 'lehter + rit.' is written above the staff.

Handwritten musical notation for the first system. It consists of a treble staff and a bass staff. The treble staff begins with a treble clef and a piano (*p*) dynamic marking. The melody is written in a series of eighth and sixteenth notes. A circled number '4' is written above the treble staff at the end of the system. The bass staff contains a few notes, including a sharp sign (#).

Handwritten musical notation for the second system. It consists of a treble staff and a bass staff. The treble staff continues the melodic line with a circled number '9' above it. The bass staff contains notes and a sharp sign (#).

Handwritten musical notation for the third system. It consists of a treble staff and a bass staff. The treble staff ends with a circled number '5'. To the right of the system, the instruction "D.C. al Fine" is written. The bass staff contains notes and a sharp sign (#).

bvent

ff

rubato

ff

1

2

7 7 3 -

bvent

ff

2

*(solo frei
quasi)*

FINE *langsam (accel. langsam)*

3

breit

4

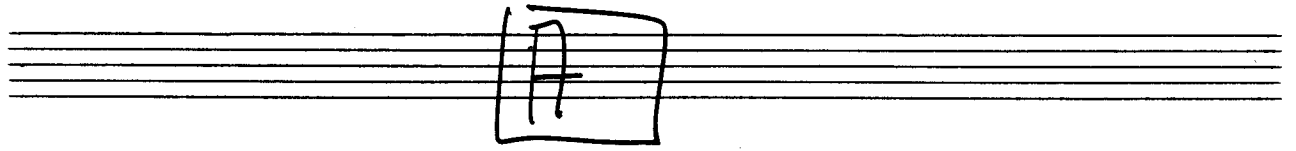
(frei)

5

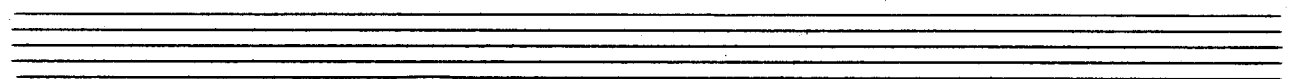
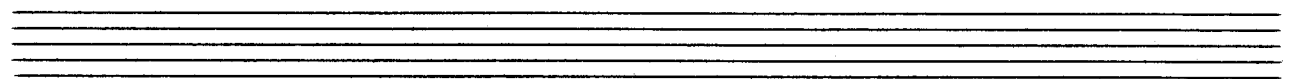
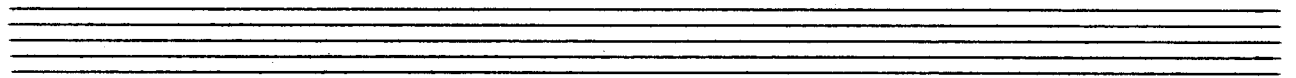
frei

D.C. al Fine

6



Wieder sehr breit (approximative) ①



②

③

letzte p. rit. ④

FINE

FINE

|| D.C. al Fine

B

Presto

3

4

rubato

breit

Handwritten musical notation for the first system. It consists of two staves: a treble clef staff and a bass clef staff. The treble staff contains notes with slurs and a circled '1' at the end. The bass staff contains notes with slurs and a sharp sign (#) at the beginning.

Handwritten musical notation for the second system. It consists of two staves: a treble clef staff and a bass clef staff. The treble staff contains notes with slurs and a circled '2' above it. The bass staff contains notes with slurs.

Handwritten musical notation for the third system. It consists of two staves: a treble clef staff and a bass clef staff. The treble staff contains notes with slurs and a circled '2' above it. The bass staff contains notes with slurs.

3

Handwritten musical notation for measure 3. The treble clef staff contains a half note G4 with a flat, followed by a quarter note G4 with a flat, a quarter note A4 with a flat, a quarter note B4 with a flat, a quarter note C5, a quarter note B4 with a flat, and a quarter note A4 with a flat. The bass clef staff contains a half note G3 with a flat, followed by a quarter note G3 with a flat, a quarter note A3 with a flat, a quarter note B3 with a flat, a quarter note C4, a quarter note B3 with a flat, and a quarter note A3 with a flat. The measure is enclosed in a large hand-drawn oval.

4

Handwritten musical notation for measure 4. The treble clef staff contains a half note G4 with a flat, followed by a quarter note G4 with a flat, a quarter note A4 with a flat, a quarter note B4 with a flat, and a quarter note C5. The bass clef staff contains a half note G3 with a flat, followed by a quarter note G3 with a flat, a quarter note A3 with a flat, a quarter note B3 with a flat, a quarter note C4, a quarter note B3 with a flat, and a quarter note A3 with a flat. The measure is enclosed in a large hand-drawn oval.

5

Handwritten musical notation for measure 5. The treble clef staff contains a half note G4 with a flat, followed by a quarter note G4 with a flat, a quarter note A4 with a flat, and a quarter note B4 with a flat. The bass clef staff contains a half note G3 with a flat, followed by a quarter note G3 with a flat, a quarter note A3 with a flat, a quarter note B3 with a flat, a quarter note C4, a quarter note B3 with a flat, and a quarter note A3 with a flat. The measure is enclosed in a large hand-drawn oval.

2. + gr. mit...

Fine

fast
attacca

Allegro

Handwritten musical notation for the first system. It features a treble clef, a key signature of one sharp (F#), and a 4/4 time signature. The right hand plays a series of chords, while the left hand has a simple bass line.

Handwritten musical notation for the second system, including a circled number '1' in the top right corner. The right hand continues with a melodic line, and the left hand has a simple bass line.

Handwritten musical notation for the third system, showing a continuation of the melodic and bass lines.

Handwritten musical notation for the fourth system, concluding the piece with a final melodic and bass line.

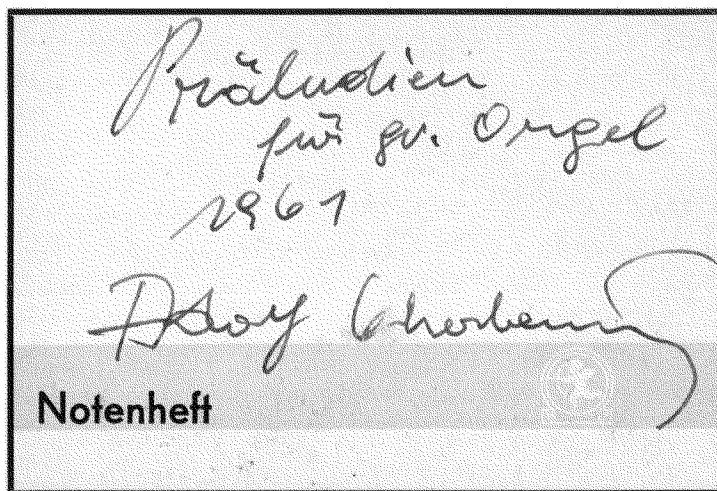
②

sehr
Dreit

lange halten!

1960

Adolf
Scherbaum
Wien
August



Präludien
für gr. Orgel

1961 Adolf
Scherbaum

breit

①

②

③

Handwritten musical notation for the first system, featuring a treble and bass clef with a grand staff bracket. The music consists of a melodic line in the treble clef and a bass line in the bass clef, with various notes and accidentals.

Handwritten musical notation for the second system, including a circled number '9' above the staff. The notation shows a treble and bass clef with a grand staff bracket, and includes some handwritten annotations like 'III' and 'I'.

Handwritten musical notation for the third system, showing a treble and bass clef with a grand staff bracket. The notation includes various notes, rests, and accidentals.

Handwritten musical notation for the fourth system, featuring a treble and bass clef with a grand staff bracket. It includes the instruction 'D.C. al Fine' and a large handwritten flourish.

Rubig

3

4

5

Ruhig

①

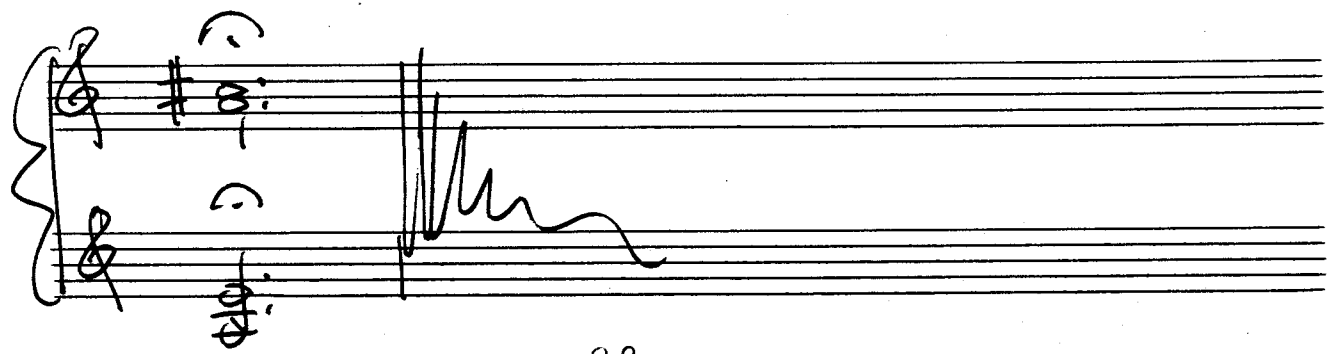
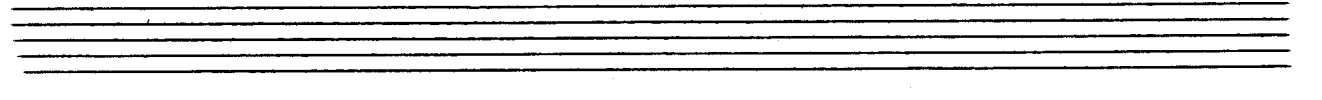
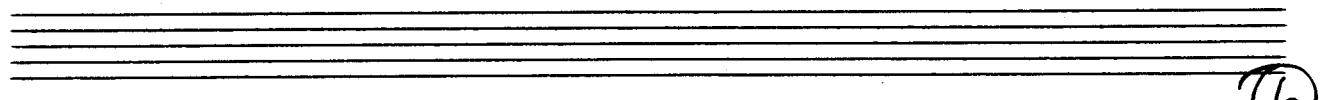
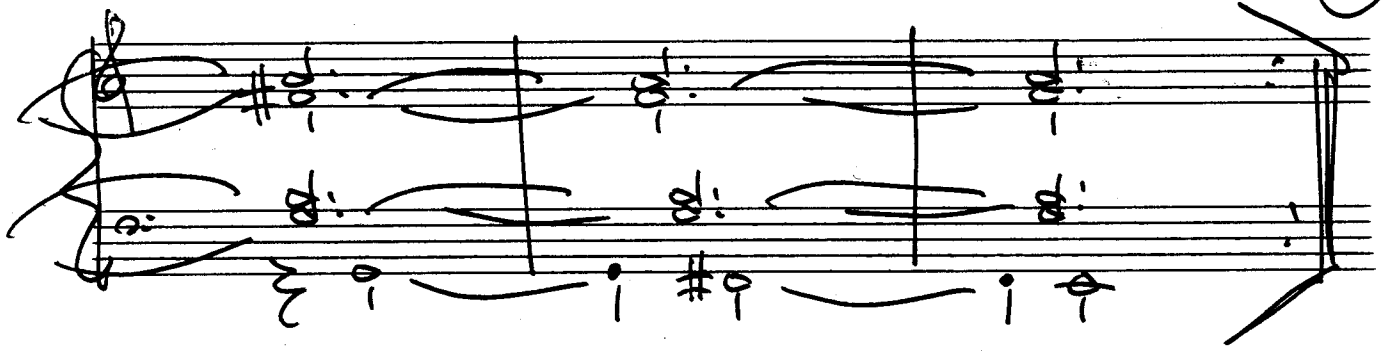
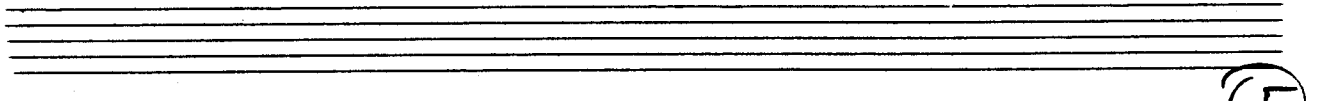
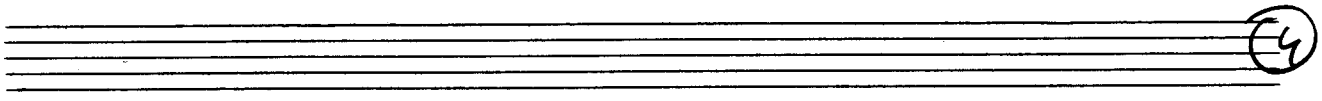
Handwritten musical notation for the first system. It consists of two staves: a treble clef staff and a bass clef staff. The time signature is 3/4. The key signature has one sharp (F#). The notation includes various notes, rests, and phrasing slurs. A circled number 1 is in the top right corner.

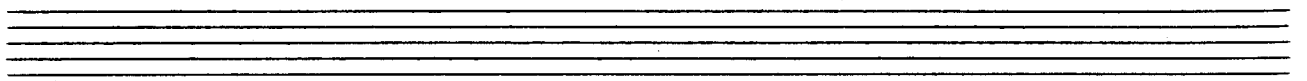
②

Handwritten musical notation for the second system. It consists of a grand staff with a treble clef and a bass clef. The notation includes various notes, rests, and phrasing slurs. A circled number 2 is in the top right corner.

③

Handwritten musical notation for the third system. It consists of a grand staff with a treble clef and a bass clef. The notation includes various notes, rests, and phrasing slurs. A circled number 3 is in the top right corner.





breit (Maestoso)

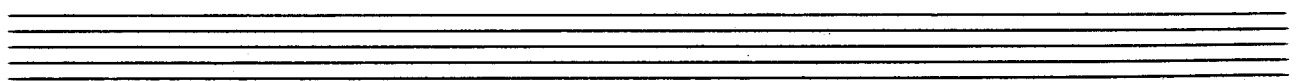
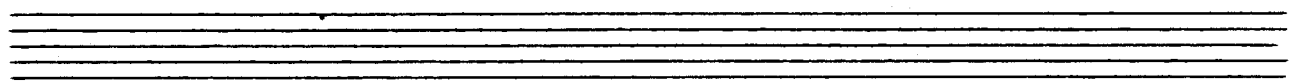
Handwritten musical notation for the first system. It features a treble clef with a key signature of one sharp (F#) and a common time signature (C). The right hand part consists of a melodic line with notes and rests, and a bass line with chords and a few notes. A circled number '1' is in the top right corner.



Handwritten musical notation for the second system. It continues the piece with similar notation to the first system. A circled number '2' is in the top right corner.



Handwritten musical notation for the third system. It continues the piece with similar notation to the first system. A circled number '3' is in the top right corner.



letzte gr. gut

FINE

Handwritten musical notation for the first system. It consists of two staves: a treble clef staff and a bass clef staff. The treble staff contains a series of notes: a quarter note G4, a quarter note A4, a quarter note B4, a quarter note C5, a quarter note B4, a quarter note A4, and a quarter note G4. A large slur covers the entire system. In the bass staff, there are some notes and a sharp sign. A circled 'FINE' is written at the end of the system.

Handwritten musical notation for the second system. It consists of two staves. The treble staff has two measures of music. The first measure contains a series of notes: G4, A4, B4, C5, B4, A4, G4. The second measure contains a series of notes: G4, A4, B4, C5, B4, A4, G4. A sharp sign is present in the bass staff. A large slur covers the entire system.

Handwritten musical notation for the third system. It consists of two staves. The treble staff has two measures of music. The first measure contains a series of notes: G4, A4, B4, C5, B4, A4, G4. The second measure contains a series of notes: G4, A4, B4, C5, B4, A4, G4. A sharp sign is present in the bass staff. A large slur covers the entire system.

Handwritten musical notation for the fourth system. It consists of two staves. The treble staff has two measures of music. The first measure contains a series of notes: G4, A4, B4, C5, B4, A4, G4. The second measure contains a series of notes: G4, A4, B4, C5, B4, A4, G4. A sharp sign is present in the bass staff. The system ends with the handwritten text 'D.C. al Fine'.

flüchtig (Rasch)

①

②

③

Handwritten musical notation for the first system. It consists of two staves. The upper staff contains notes with stems and beams, and the lower staff contains notes with stems and beams. There are several accidentals (sharps) and a circled number '5' at the end of the system.

Handwritten musical notation for the second system. It consists of two staves. The upper staff contains notes with stems and beams, and the lower staff contains notes with stems and beams. There are several accidentals (sharps) and a circled number '5' at the end of the system.

Handwritten musical notation for the third system. It consists of two staves. The upper staff contains notes with stems and beams, and the lower staff contains notes with stems and beams. There are several accidentals (sharps) and a circled number '5' at the end of the system.

Handwritten musical notation for the fourth system. It consists of two staves. The upper staff contains notes with stems and beams, and the lower staff contains notes with stems and beams. There are several accidentals (sharps) and a circled number '5' at the end of the system.

Adler jubig (fließend)

Handwritten musical notation for the first system of 'Adler jubig (fließend)'. It features a grand staff with treble and bass clefs. The time signature is 3/4, marked with a circled 'P'. The right hand plays a melodic line with eighth notes, and the left hand plays a bass line with quarter notes. A long slur covers the entire system.

Handwritten musical notation for the second system of 'Adler jubig (fließend)'. It features a grand staff with treble and bass clefs. The right hand has a circled '1' above the first measure. The melody continues with eighth notes, and the bass line has quarter notes. A long slur covers the entire system.

Handwritten musical notation for the third system of 'Adler jubig (fließend)'. It features a grand staff with treble and bass clefs. The right hand has a circled '2' above the first measure. The melody continues with eighth notes, and the bass line has quarter notes. A long slur covers the entire system.

3

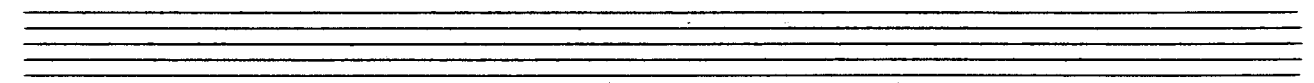
Handwritten musical notation for system 3, measures 1-3. The right hand has a melodic line with a slur over the first two measures. The left hand has a bass line with a slur over the first two measures.

4

Handwritten musical notation for system 4, measures 1-3. The right hand has a melodic line with a slur over the first two measures. The left hand has a bass line with a slur over the first two measures.

5

Handwritten musical notation for system 5, measures 1-3. The right hand has a melodic line with a slur over the first two measures. The left hand has a bass line with a slur over the first two measures. The word "FINE" is written at the end of the system. Below the system, the text "zitat von mit" is written.



breit
(frei)

#

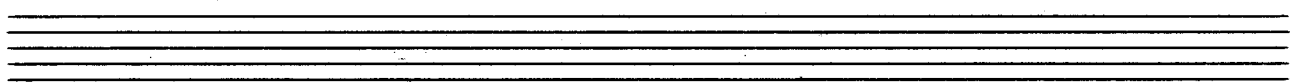
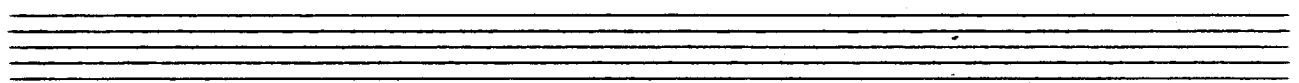
①

#

②

#

③



Handwritten musical notation for the first system. It consists of two staves. The top staff is in treble clef and the bottom in bass clef. The time signature is 4/4. The key signature has one sharp (F#). The notation includes several notes, some with slurs, and rests. There are some handwritten annotations like '33' and '33' under some notes.

Handwritten musical notation for the second system. It consists of two staves. The top staff is in treble clef and the bottom in bass clef. The time signature is 4/4. The key signature has one sharp (F#). The notation includes notes and rests. There are circled numbers '3' and '5' above the staves. There are also some handwritten annotations like 'C: DDD' and 'C: DDD' with a sharp sign.

Handwritten musical notation for the third system. It consists of two staves. The top staff is in treble clef and the bottom in bass clef. The time signature is 4/4. The key signature has one sharp (F#). The notation includes a dense sequence of notes, possibly a scale or arpeggio, with a slur over the top staff.

Handwritten musical notation for the fourth system. It consists of two staves. The top staff is in treble clef and the bottom in bass clef. The time signature is 4/4. The key signature has one sharp (F#). The notation includes notes and rests. There is a large scribble in the bottom staff. The text 'F. Pedal' is written at the bottom left.

Presto

Handwritten musical notation for the first system. It consists of two staves: a treble clef staff and a bass clef staff. The treble staff contains a melodic line with eighth and sixteenth notes, including accidentals (flats and naturals). The bass staff contains a bass line with quarter notes and rests. A large slur covers the entire system, and a circled number '2' is written at the end of the treble staff.

Handwritten musical notation for the second system. It consists of two staves. The treble staff features a melodic line with a triplet of eighth notes and various accidentals (sharps, flats, and naturals). The bass staff contains a bass line with quarter notes and rests. A large slur covers the entire system.

Handwritten musical notation for the third system. It consists of two staves. The treble staff continues the melodic line with eighth and sixteenth notes and accidentals. The bass staff continues the bass line with quarter notes and rests. A large slur covers the entire system.

Handwritten musical notation for the fourth system. It consists of two staves. The treble staff ends with a double bar line and the word 'FINE' written in capital letters. The bass staff also ends with a double bar line. A large slur covers the entire system.

①

Handwritten musical notation for system 1, measures 1-2. The system consists of two staves. The right staff is in treble clef with a key signature of one sharp (F#). The left staff is in bass clef. Measure 1 contains a half note chord (F#4, A4, C5) in the right hand and a triplet of eighth notes (F#3, A3, C4) in the left hand. Measure 2 contains a half note chord (F#4, A4, C5) in the right hand and a half note (F#3) in the left hand. A slur covers both measures in both staves.

②

Handwritten musical notation for system 2, measures 3-4. The system consists of two staves. The right staff is in treble clef with a key signature of one sharp (F#). The left staff is in bass clef. Measure 3 contains a half note chord (F#4, A4, C5) in the right hand and a triplet of eighth notes (F#3, A3, C4) in the left hand. Measure 4 contains a half note chord (F#4, A4, C5) in the right hand and a half note (F#3) in the left hand. A slur covers both measures in both staves.

③

Handwritten musical notation for system 3, measures 5-6. The system consists of two staves. The right staff is in treble clef with a key signature of one sharp (F#). The left staff is in bass clef. Measure 5 contains a half note chord (F#4, A4, C5) in the right hand and a triplet of eighth notes (F#3, A3, C4) in the left hand. Measure 6 contains a half note chord (F#4, A4, C5) in the right hand and a half note (F#3) in the left hand. A slur covers both measures in both staves.

④

Handwritten musical notation for system 4, measures 7-8. The system consists of two staves. The right staff is in treble clef with a key signature of one sharp (F#). The left staff is in bass clef. Measure 7 contains a half note chord (F#4, A4, C5) in the right hand and a triplet of eighth notes (F#3, A3, C4) in the left hand. Measure 8 contains a half note chord (F#4, A4, C5) in the right hand and a half note (F#3) in the left hand. A slur covers both measures in both staves.

Handwritten musical notation for the first system. It consists of two staves: a treble clef staff on top and a bass clef staff on the bottom. A long slur arches over the entire system. The treble staff contains two measures of music, each with a series of eighth notes. The bass staff contains two measures of music, each with a series of eighth notes.

Handwritten musical notation for the second system. It consists of two staves: a treble clef staff on top and a bass clef staff on the bottom. A long slur arches over the entire system. The treble staff contains two measures of music, each with a series of eighth notes. The bass staff contains two measures of music, each with a series of eighth notes.

Handwritten musical notation for the third system. It consists of two staves: a treble clef staff on top and a bass clef staff on the bottom. The notation is partially obscured by a large scribble. To the right of the staves, there are handwritten instructions: "2. x", "D.C.", and "ad Fine". A double bar line is present at the end of the system.

breit ①

②

Handwritten musical notation for the first system. The treble clef staff contains a melodic line with notes and accidentals (flats and naturals) connected by a long slur. The bass clef staff contains a bass line with notes and accidentals. A 4/4 time signature is written in the bass staff.

Handwritten musical notation for the second system. The treble clef staff has notes and accidentals with a slur. The bass clef staff has notes and accidentals. A 4/4 time signature is written in the bass staff.

Handwritten musical notation for the third system. The treble clef staff has notes and accidentals with a slur. The bass clef staff has notes and accidentals. A 4/4 time signature is written in the bass staff.

Handwritten musical notation for the fourth system. The treble clef staff has notes and accidentals with a slur. The bass clef staff has notes and accidentals. A 4/4 time signature is written in the bass staff. The word "Zart" is written above the treble staff. The dynamic marking "pp" is in a circle in the bass staff. The ending is marked "D.C. al Fine" with a double bar line and repeat sign.

Schwer (Adagio)

Tempo cresc.

R.H.
L.H.

Handwritten musical notation for the first system, showing a grand staff with treble and bass clefs. The right hand (R.H.) has a circled 'p' dynamic marking. The left hand (L.H.) has a circled '4' time signature. The notation includes notes, rests, and slurs.

①

Handwritten musical notation for the second system, marked with a circled '1'. It shows a grand staff with treble and bass clefs, featuring notes, slurs, and a circled 'p' dynamic marking.

②

Handwritten musical notation for the third system, marked with a circled '2'. It shows a grand staff with treble and bass clefs, featuring notes, slurs, and a circled 'p' dynamic marking.

3

mf

4

f

5

f

6

f

Allegro

Handwritten musical notation for the first system, measures 1-3. The music is in treble clef with a 3/8 time signature. The first measure contains a dynamic marking 'f' and a fermata over the first two notes. The second measure has a circled '1' above it. The third measure has a circled '1' above it. The bass line consists of a single note with a fermata in each measure.

Handwritten musical notation for the second system, measures 4-6. The music is in treble clef. The first measure has a circled '2' above it. The second measure has a circled '2' above it. The third measure has a circled '3' above it. The bass line consists of a single note with a fermata in each measure.

Handwritten musical notation for the third system, measures 7-9. The music is in treble clef. The first measure has a circled '4' above it. The second measure has a circled '4' above it. The third measure has a circled '4' above it. The bass line consists of a single note with a fermata in each measure.

Handwritten musical notation for system 5, measures 1-4. The system consists of two staves. The upper staff is in treble clef with a key signature of one sharp (F#) and a common time signature. It contains four measures of music, each with a sixteenth-note pattern. The lower staff is in bass clef and contains four measures of music, each with a single note. A circled number '5' is in the top right corner.

Handwritten musical notation for system 6, measures 1-4. The system consists of two staves. The upper staff is in treble clef with a key signature of one sharp (F#) and a common time signature. It contains four measures of music, each with a sixteenth-note pattern. The lower staff is in bass clef and contains four measures of music, each with a single note. A circled number '6' is in the top right corner.

Handwritten musical notation for system 7, measures 1-4. The system consists of two staves. The upper staff is in treble clef with a key signature of one sharp (F#) and a common time signature. It contains four measures of music, each with a sixteenth-note pattern. The lower staff is in bass clef and contains four measures of music, each with a single note. A circled number '7' is in the top right corner.

Handwritten musical notation for system 8, measures 1-4. The system consists of two staves. The upper staff is in treble clef with a key signature of one sharp (F#) and a common time signature. It contains four measures of music, each with a sixteenth-note pattern. The lower staff is in bass clef and contains four measures of music, each with a single note. A circled number '8' is in the top right corner.

sehr

~~Basso~~

volles Werk

Handwritten musical notation for the first system, featuring a grand staff with treble and bass clefs, a 4/4 time signature, and a key signature of one sharp (F#). The notation consists of rhythmic patterns of eighth notes in both hands, with some notes marked with accents and a sharp sign in the right hand. The system ends with a double bar line.

Handwritten musical notation for the second system, continuing the grand staff and rhythmic patterns from the first system. It includes a circled number '1' at the end of the system, indicating a first ending or repeat sign.

Allegro (auf 2)

Handwritten musical notation for the third system, featuring a grand staff with treble and bass clefs, a 6/4 time signature, and a key signature of one sharp (F#). The notation shows a melodic line in the right hand with a long slur over it, and a bass line with eighth notes. The system ends with a double bar line.

②

③

④

⑤

Presto (agg.)

Handwritten musical notation for the first system, measures 1-2. The treble clef staff has a key signature of one sharp (F#) and a 6/4 time signature. The bass clef staff has a key signature of one sharp (F#). The music features a melodic line with many accidentals and a bass line with sustained notes. A circled '1' is at the end of the system.

Handwritten musical notation for the second system, measures 3-4. The treble clef staff continues the melodic line with many accidentals. The bass clef staff continues the bass line with sustained notes. A circled '2' is at the end of the system.

Handwritten musical notation for the third system, measures 5-6. The treble clef staff continues the melodic line with many accidentals. The bass clef staff continues the bass line with sustained notes. A circled '3' is at the end of the system.

Handwritten musical notation for the fourth system, measures 7-8. The treble clef staff continues the melodic line with many accidentals. The bass clef staff continues the bass line with sustained notes. A circled '4' is at the end of the system.

Handwritten musical notation for the first system. It consists of two staves. The upper staff is in treble clef and contains several notes with accidentals (sharps and naturals) and some scribbled-out markings. The lower staff is in bass clef and contains notes with accidentals. A circled number '4' is written at the end of the system.

Handwritten musical notation for the second system. It consists of two staves. The upper staff is in treble clef and shows a series of notes with accidentals. The lower staff is in bass clef and shows a series of notes with accidentals. A circled number '5' is written above the system.

Handwritten musical notation for the third system. It consists of two staves. The upper staff is in treble clef and shows a series of notes with accidentals. The lower staff is in bass clef and shows a series of notes with accidentals. A circled number '6' is written above the system.

Handwritten musical notation for the fourth system. It consists of two staves. The upper staff is in treble clef and shows a series of notes with accidentals. The lower staff is in bass clef and shows a series of notes with accidentals. A circled number '6' is written at the end of the system, followed by the text 'D.C. or' and a clef symbol.

Tempo

(Kleine) G.P.

4

#

B

C

Handwritten musical score for the first system. It consists of three staves: a treble staff with a circled 'D' above it, a middle staff with chords, and a bass staff. The treble staff contains a series of notes with stems pointing up, some with accidentals. The middle staff has chords with stems pointing up. The bass staff has a few notes with stems pointing up.

Handwritten musical score for the second system. It consists of three staves: a treble staff with a circled 'F' above it and the word 'ADAGIO' written next to it, a middle staff with chords, and a bass staff. The treble staff contains a series of notes with stems pointing up, some with accidentals. The middle staff has chords with stems pointing up. The bass staff has a few notes with stems pointing up. There is a handwritten '6' and '4' with 'sehr breit' written below them.

Handwritten musical score for the third system. It consists of three staves: a treble staff with a circled 'G' above it, a middle staff with chords, and a bass staff. The treble staff contains a series of notes with stems pointing up, some with accidentals. The middle staff has chords with stems pointing up. The bass staff has a few notes with stems pointing up. There are handwritten annotations: 'lange halten' and 'frei' written above the treble staff, and a large scribble on the right side of the page.