

Konzert für Flöte  
1962

mit großem

Streicherorchester

**Notenheft**

Konzert für

Flöte und Streicher

1962

Adolf Scherbaum

(in 3 Teilen)

*ad. lib.* 1

*p* *ver*

1V

2V

Br

*Con Sinfinito*

ChB

1

Handwritten musical score for the first system. It consists of four staves. The top staff is for the flute, showing a melodic line with various notes, rests, and a large slur. The three staves below are for strings, with some notes and rests visible. The notation is in black ink on white paper.

Handwritten musical score for the second system. It consists of four staves. The top staff is for the flute, showing a melodic line with various notes, rests, and a large slur. The three staves below are for strings, with some notes and rests visible. The notation is in black ink on white paper. A circled number '2' is written at the end of the system.

② ②

Flöte (mit Violine  
1. Violinisten)

④ Allegro con brio

5

1<sup>v</sup>  
2<sup>v</sup>  
Pn  
CTB

Flöte Solo

Handwritten musical score for measures 6-7. The top staff is a treble clef with a melodic line of eighth notes. The middle three staves are a grand staff with long horizontal lines and some notes. The bottom staff is a bass clef with rhythmic notation.

Handwritten musical score for measures 8-9. The top staff is a treble clef with a melodic line of eighth notes. The middle three staves are a grand staff with long horizontal lines and some notes. The bottom staff is a bass clef with rhythmic notation and dynamic markings.



Handwritten musical score for the first system. The system consists of five staves. The top staff is a treble clef with a key signature of one flat and a common time signature. It contains a complex melodic line with many beamed notes. The second and third staves are grand staff (treble and bass clefs) with long horizontal lines and some notes, indicating sustained or held parts. The fourth and fifth staves are grand staff with rhythmic notation, including eighth and sixteenth notes. A circled number '7' is in the top right corner.

Handwritten musical score for the second system. The system consists of five staves. The top staff is a treble clef with a key signature of one flat and a common time signature. It contains a complex melodic line with many beamed notes. The second and third staves are grand staff (treble and bass clefs) with long horizontal lines and some notes, indicating sustained or held parts. The fourth and fifth staves are grand staff with rhythmic notation, including eighth and sixteenth notes. The word "Solo" is written above the second and fourth staves.

Handwritten musical score for the first system. It features five staves. The top staff contains a complex melodic line with many beamed notes and slurs. The second, third, and fourth staves are mostly empty, with some horizontal lines indicating rests. The bottom staff contains a bass line with notes and rests. A circled number '8' is in the top right corner. A circled 'pizz' and 'H' are in the bottom left corner.

Handwritten musical score for the second system. It features five staves. The top staff continues the melodic line from the first system. The second staff has a few notes and rests. The third and fourth staves are mostly empty. The bottom staff has a few notes and rests. A circled number '9' is in the top right corner. The word 'Solo' is written above the bottom staff.

Handwritten musical score for the first system. The top staff is for the flute, showing a melodic line with a slur and an accent. The bottom four staves are for the string quartet (Violin I, Violin II, Viola, and Cello/Double Bass), each with rhythmic patterns of eighth notes and slurs. The tempo is marked "alle".

Handwritten musical score for the second system. The top staff is for the flute, featuring a complex, rapid melodic passage with many slurs. The bottom four staves are for the string quartet, with long, sustained notes and slurs. A circled "40" is at the end of the system.

10

Weit (Solitas)

11

Flöte

Handwritten musical score for measures 12-13. The Flute part (top staff) features a melodic line with slurs and a circled plus sign. The string parts (bottom four staves) are marked with 'Hp' and 'p' dynamics, with various bowing and phrasing markings.

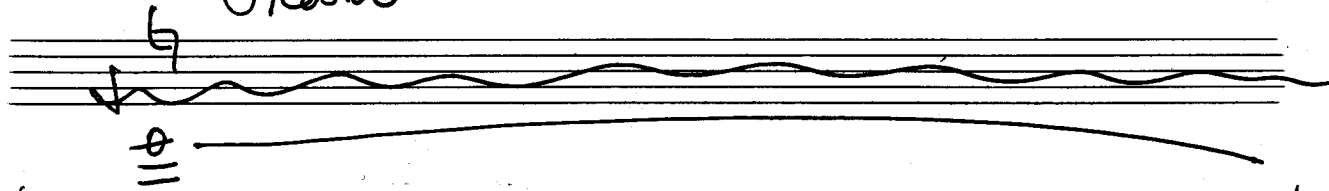
rit-tain

Handwritten musical score for measures 14-15. The Flute part (top staff) continues the melodic line with a 'rit-tain' marking and a 'p' dynamic. The string parts (bottom four staves) show sustained notes with bowing directions.

folgt von 4 — 10 —

dann folgt — weiter —

# Presto



Handwritten musical score for the first system. The top staff is a treble clef with a sharp sign. The second staff is a treble clef with a sharp sign and the word "tutti" written below it. The third and fourth staves are bass clefs with sharp signs. The music is divided into three measures by vertical bar lines. The flute part (second staff) contains rapid sixteenth-note passages with slurs and accents. The piano accompaniment (third and fourth staves) consists of chords and rhythmic patterns.

Handwritten musical score for the second system. The top staff is a treble clef. The second staff is a treble clef with a sharp sign. The third and fourth staves are bass clefs with sharp signs. The music is divided into two measures by a vertical bar line. The flute part (second staff) contains rapid sixteenth-note passages with slurs and accents. The piano accompaniment (third and fourth staves) consists of rests.

Handwritten musical score for the first system. It consists of five staves. The top staff is a single line with a treble clef and a key signature of one sharp (F#). The second staff is a single line with a treble clef and a key signature of one sharp (F#). The third and fourth staves are grouped by a brace on the left and represent the piano accompaniment, with a bass clef and a key signature of one sharp (F#). The fifth staff is a single line with a bass clef and a key signature of one sharp (F#). The music is divided into two measures by a vertical bar line. The first measure contains a few notes in the flute and piano parts. The second measure contains more complex notation, including a dense piano accompaniment with many sixteenth notes and a flute part with some accidentals.

A set of empty musical staves, consisting of five horizontal lines.

A set of empty musical staves, consisting of five horizontal lines. On the right side, there is a circled sharp symbol (#).

Handwritten musical score for the second system. It consists of five staves. The top staff is a single line with a treble clef and a key signature of one sharp (F#). The second staff is a single line with a treble clef and a key signature of one sharp (F#). The third and fourth staves are grouped by a brace on the left and represent the piano accompaniment, with a bass clef and a key signature of one sharp (F#). The fifth staff is a single line with a bass clef and a key signature of one sharp (F#). The music is divided into two measures by a vertical bar line. The first measure contains a few notes in the flute and piano parts. The second measure contains more complex notation, including a dense piano accompaniment with many sixteenth notes and a flute part with some accidentals. There are some scribbles and corrections in the first measure of the top two staves.



# Danzare crescendo

Handwritten musical score for the first system of 'Danzare crescendo'. The score is written on five staves. The top staff is the flute part, featuring a melodic line with many slurs and accents. The lower four staves represent the string quartet, with each staff starting with a *pp* (pianissimo) dynamic marking. The music is in a key with one sharp (F#) and a common time signature. The system concludes with a double bar line.

Handwritten musical score for the second system of 'Danzare crescendo'. The score continues on five staves. The flute part continues with its melodic line, ending with a circled letter 'B' at the final measure. The string quartet parts continue with their respective lines. The system concludes with a double bar line.

Handwritten musical score for the first system. The top staff is the flute part, showing a melodic line with many notes and slurs. Below it are four staves for strings. The first string staff has a dynamic marking  $mf$  and an accent  $\wedge$ . The second string staff has a dynamic marking  $f$  and an accent  $\wedge$ . The third string staff has a dynamic marking  $f$  and an accent  $\wedge$ . The fourth string staff has a dynamic marking  $f$  and an accent  $\wedge$ . There are also some handwritten symbols like  $\times$  and  $\wedge$  on the string staves.

Handwritten musical score for the second system. The top staff is the flute part, continuing the melodic line. Below it are four staves for strings. The first string staff has a dynamic marking  $f$ . The second string staff has a dynamic marking  $f$ . The third string staff has a dynamic marking  $f$ . The fourth string staff has a dynamic marking  $f$ . There are also some handwritten symbols like  $\wedge$  and  $\times$  on the string staves.

Handwritten musical score for the first system. It consists of five staves. The top staff contains a complex melodic line with many beamed notes. The second staff is marked with a circled plus sign and the word "Solo". The third staff also has a circled plus sign and a circled "Solo" marking. The bottom two staves are mostly empty, with some horizontal lines indicating rests or specific fingerings.

Handwritten musical score for the second system. It consists of five staves. The top staff continues the melodic line from the first system. The second staff has some rhythmic markings. The third staff has a circled plus sign. The bottom staff is marked with a circled plus sign and the word "Solo Cello". The system concludes with a circled "P" marking on the right side.

folgt von  $\phi$  - (D) dann weiter —

①

Handwritten musical score for the first system. It features a treble clef staff with a key signature of one sharp (F#) and a common time signature. The score includes a flute part and a piano accompaniment. The piano part consists of four staves: two for the right hand and two for the left hand. The right hand part has a melodic line with eighth and sixteenth notes, while the left hand part has a more rhythmic accompaniment. There are some handwritten annotations like "alle" and "e" above the notes. The system ends with a double bar line and repeat signs.

Handwritten musical score for the second system. It features a treble clef staff with a key signature of one sharp (F#) and a common time signature. The score includes a flute part and a piano accompaniment. The piano part consists of four staves: two for the right hand and two for the left hand. The right hand part has a melodic line with eighth and sixteenth notes, while the left hand part has a more rhythmic accompaniment. There are some handwritten annotations like "alle" and "e" above the notes. The system ends with a double bar line and a large, sweeping flourish.

Adagio (nicht schleppend)

11

Handwritten musical score for the first system. It consists of five staves. The top staff is the flute part, starting with a circled '11' above it. The second staff is the first violin part, marked 'pp'. The third staff is the second violin part, also marked 'pp'. The fourth staff is the viola part, marked 'pp'. The fifth staff is the cello and double bass part, marked 'pp'. The music is in 3/4 time and features a melodic line in the flute and sustained chords in the strings.

Handwritten musical score for the second system. It consists of five staves. The top staff is the flute part, continuing the melodic line. The second staff is the first violin part, marked 'pp'. The third staff is the second violin part, marked 'pp'. The fourth staff is the viola part, marked 'pp'. The fifth staff is the cello and double bass part, marked 'pp'. The music continues with the flute melody and string accompaniment.

①

Handwritten musical score for the first system, measures 1-2. The score is written on four staves. The top staff is the flute part, starting with a circled 'p' dynamic. The second staff is a solo flute part, also marked with a circled 'p' dynamic. The third staff is a bass line, marked with a circled 'p' dynamic. The key signature changes from one sharp (F#) to one flat (Bb) between measures 1 and 2. The first measure contains a half note F# and a quarter note G. The second measure contains a half note Bb and a quarter note C.

②

Handwritten musical score for the second system, measures 3-4. The score is written on four staves. The top staff is the flute part, starting with a circled 'mf' dynamic. The second staff is a solo flute part, also marked with a circled 'mf' dynamic. The third staff is a bass line, marked with a circled 'mf' dynamic. The key signature changes from one flat (Bb) to one sharp (F#) between measures 3 and 4. The first measure contains a half note Bb and a quarter note C. The second measure contains a half note D and a quarter note E.

Handwritten musical score for the first system. The system consists of five staves. The top staff is for the flute, showing a melodic line with trills and slurs. The second staff is for the piano, with a series of chords and a slur. The third staff is for the piano, with a melodic line and a slur. The fourth staff is for the piano, with a melodic line and a slur. The fifth staff is for the piano, with a melodic line and a slur. There are various annotations, including circled 'p' and 'f' markings, and a circled '3' at the end of the system.

Handwritten musical score for the second system. The system consists of five staves. The top staff is for the flute, showing a melodic line with trills and slurs. The second staff is for the piano, with a series of chords and a slur. The third staff is for the piano, with a melodic line and a slur. The fourth staff is for the piano, with a melodic line and a slur. The fifth staff is for the piano, with a melodic line and a slur. There are various annotations, including circled 'p' and 'f' markings, and a circled '3' at the end of the system.



Handwritten musical score for the first system. It consists of five staves. The top staff is for the Flute, marked *fp*, with notes  $b^{\flat}$ ,  $\sharp$ , and  $\flat$  and a triplet of eighth notes. The second and third staves are for the Violin, marked *Solo* and *pp*, with notes  $b$  and  $a$ . The fourth and fifth staves are for the Viola and Cello, marked *Solo* and *pp*, with notes  $b$  and  $a$ . The bottom staff is for the Bass, marked *mf*, with a melodic line of eighth notes.

Handwritten musical score for the second system. It consists of five staves. The top staff is for the Flute, marked *f*, with notes  $\sharp$ ,  $\flat$ , and  $\sharp$  and a circled  $\sharp$  symbol. The second, third, and fourth staves are for the Violin, Viola, and Cello, each marked *alle*. The bottom staff is for the Bass, marked *f*, with a melodic line of eighth notes and a circled  $\sharp$  symbol.

5

6

Handwritten musical score for the first system. It consists of five staves. The top four staves are for the piano, and the bottom staff is for the solo cello. The cello part is marked "Solo Cello" and begins with a circled "P" (piano) dynamic. The piano accompaniment has a circled "p" (piano) dynamic. The system concludes with a circled "7" indicating the end of the measure.

Handwritten musical score for the second system. It consists of five staves. The top four staves are for the piano, and the bottom staff is for the solo cello. The cello part continues with a circled "f" (forte) dynamic. The piano accompaniment has a circled "f" (forte) dynamic. The system concludes with a circled "7" indicating the end of the measure.

Handwritten musical score for the first system. It consists of a flute part on a single staff and a piano accompaniment on five staves. The key signature is one sharp (F#). The flute part begins with a treble clef and a sharp sign. The piano accompaniment includes a grand staff (treble and bass clefs) and three additional staves. The notation includes various note values, rests, and slurs. The word "p" (piano) is written on the second staff, and "alle" is written on the third staff.

Handwritten musical score for the second system, continuing the flute and piano parts. It features a flute part on a single staff and a piano accompaniment on five staves. The notation continues with complex melodic lines and accompaniment. A circled number "2" is visible in the right margin.

8

9

*over*

72

arco

74

74

76

10

11

Handwritten musical score for the first system, measures 10 and 11. The flute part (top staff) contains two measures of complex chords, each with a slur above it. The string quartet (bottom four staves) consists of sustained notes in each part, with a fermata-like symbol above the notes in measures 10 and 11.

*(appassionata / frei)*

Handwritten musical score for the second system. It begins with a dynamic marking of **f** and the tempo instruction *(appassionata / frei)*. The flute part (top staff) features a melodic line with slurs and accents. The string quartet (bottom four staves) provides accompaniment with sustained notes and dynamic markings.

Handwritten musical score for the first system. The top staff is for the flute, showing a melodic line with a large slur and a fermata. The bottom four staves are for the string quartet (Violin I, Violin II, Viola, and Cello/Double Bass), each with a few notes and a fermata.

Handwritten musical score for the second system. The top staff continues the flute melody with a large slur and a fermata. The bottom four staves continue the string quartet accompaniment with a few notes and a fermata.



Tempo

Handwritten musical score for measures 12-13. The score is written on five staves. The first staff (flute) contains a complex melodic line with many accidentals and slurs, starting with a circled measure number '12'. The second, third, and fourth staves (strings) show sustained notes with dynamic markings 'pp' and 'p'. The fifth staff (bass) shows a sequence of notes with dynamic markings 'mp' and 'p'. A circled measure number '13' is written at the end of the first staff.

Handwritten musical score for measures 14-15. The score is written on five staves. The first staff (flute) contains a complex melodic line with many accidentals and slurs, starting with a circled measure number '14'. The second, third, and fourth staves (strings) show sustained notes with dynamic markings 'f' and 'p'. The fifth staff (bass) shows a sequence of notes with dynamic markings 'f' and 'p'. A circled measure number '15' is written at the end of the first staff.

Handwritten musical score for the first system, measures 22-23. The score consists of five staves. The first staff has a circled '22' at the beginning and a circled '23' at the end. The notation includes various notes, rests, and dynamic markings such as  $\text{mf}$  and  $\text{f}$ . There are also some unusual symbols, possibly indicating fingerings or breath marks.

Handwritten musical score for the second system, measures 24-25. The score consists of five staves. The first staff has a circled '24' at the end. The notation includes various notes, rests, and dynamic markings such as  $\text{mf}$  and  $\text{f}$ . There are also some unusual symbols, possibly indicating fingerings or breath marks.

24

Solo

pp

25

Handwritten musical score for the first system. It consists of five staves. The top two staves are empty. The third staff contains a treble clef and a key signature of one flat (B-flat). The fourth staff is labeled "Solo Cello" and contains a melodic line with dynamics "pp" (pianissimo) and "f" (forte). The fifth staff contains a bass line with a dynamic "f". There are various musical notations including slurs, ties, and accidentals.

Handwritten musical score for the second system. It consists of five staves. The top two staves are empty. The third staff is labeled "Solo Cello" and contains a melodic line starting with a dynamic "p" (piano). A circled measure number "16" is written above the staff. The fourth staff contains a bass line with a dynamic "p". There are various musical notations including slurs, ties, and accidentals.

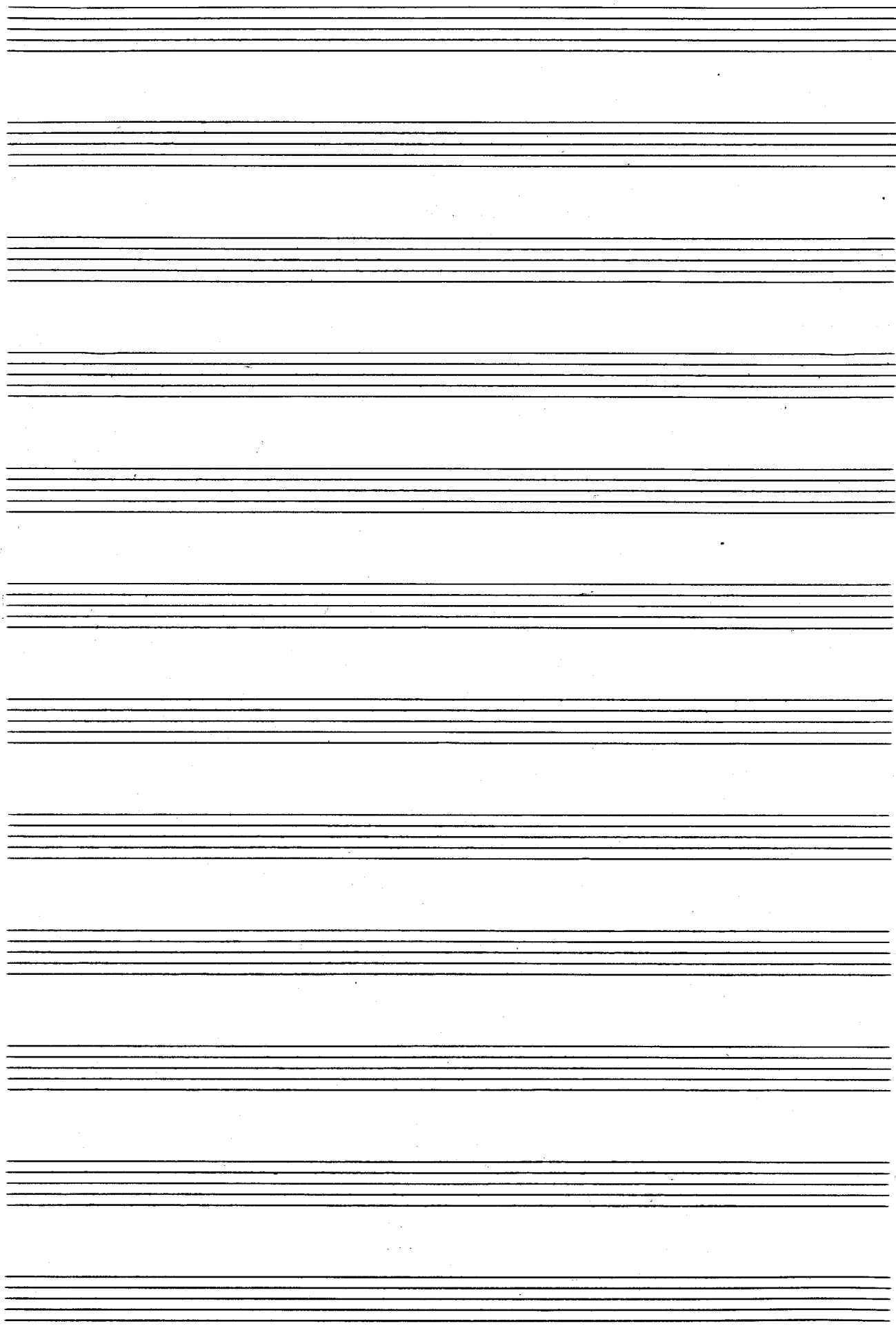
Handwritten musical score for the third system. It consists of five staves. The top two staves are empty. The third staff contains a melodic line with a circled measure number "17" at the end. The fourth staff contains a bass line with a dynamic "p". The word "durchgeführt" is written below the staff. There are various musical notations including slurs, ties, and accidentals.

von Anfang bis (14)  
(dann weiter) →

Größe ist mal ruhig ausklingen.

Handwritten musical score for the first system. The top staff is for the flute, showing a melodic line with a key signature change from B-flat to B-natural. The bottom four staves are for the string quartet, with sustained notes and a crescendo. Dynamics include *pp* and *pp*.

Handwritten musical score for the second system. The top staff is for the flute, showing a complex rhythmic pattern with a key signature change to B-natural. The bottom four staves are for the string quartet, with sustained notes and a crescendo. Dynamics include *pp*.



III c

Presto

Handwritten musical score for strings and woodwinds. The score is written on five staves. The top staff contains a series of rhythmic markings, possibly indicating fingerings or bowings. The second staff is for woodwinds, featuring dynamics like *ff* and *mf*, and includes a *rit.* marking. The third and fourth staves are for strings, with dynamics like *f* and *mf*, and includes a *rit.* marking. The bottom staff is for woodwinds, with a circled *f* and *ppz* marking. The score is divided into two measures by a vertical bar line.



Handwritten musical score for the first system. The top staff is for the flute, showing two measures of rapid sixteenth-note passages. The piano accompaniment consists of three staves: the upper two for chords and the lower for a bass line. The music is in a key with one flat (B-flat) and a common time signature. The first measure of the piano part includes a dynamic marking of *f* and a fermata over a chord. The second measure includes a dynamic marking of *f* and a fermata over a chord.

Handwritten musical score for the second system. The top staff continues the flute part with similar rapid sixteenth-note passages. The piano accompaniment continues with chords and a bass line. A circled '1' is written in the top right corner of the system. The first measure of the piano part includes a dynamic marking of *f* and a fermata over a chord. The second measure includes a dynamic marking of *f* and a fermata over a chord.

Handwritten musical score for the first system. The top staff is for the flute, showing a melodic line with various accidentals (sharps, flats, naturals) and slurs. The bottom four staves are for the piano accompaniment, with a forte 'f' dynamic marking. The piano part consists of simple harmonic accompaniment with slurs and fermatas.

Handwritten musical score for the second system. The flute part continues with a similar melodic style, including a circled '2' at the end of the line. The piano accompaniment continues with harmonic support, featuring slurs and fermatas. A circled '2' is also present on the right side of the system.

②

Handwritten musical score for the first system, measures 1-3. The score is written on five staves. The top staff is for the Flute, and the bottom four staves are for the strings (Violin I, Violin II, Viola, and Cello/Double Bass). The music is in 3/4 time. Measure 1 shows a whole rest for the Flute and a half note for the strings. Measure 2 contains a half note for the Flute and a half note for the strings. Measure 3 features a half note for the Flute and a half note for the strings. The notation includes various notes, rests, and accidentals.

③

Handwritten musical score for the second system, measures 4-5. The score is written on five staves. The top staff is for the Flute, and the bottom four staves are for the strings (Violin I, Violin II, Viola, and Cello/Double Bass). The music is in 3/4 time. Measure 4 shows a whole rest for the Flute and a half note for the strings. Measure 5 contains a half note for the Flute and a half note for the strings. The notation includes various notes, rests, and accidentals.

**p** *crese* →

Handwritten musical score for measures 4 and 5. Measure 4 features a piano (**p**) dynamic and a crescendo hairpin. The first staff contains a melodic line with slurs and ties. The second staff is marked "Solo". The piano part consists of rests. Measure 5 continues the melodic lines, with a forte (**f**) dynamic marking. A circled "4" is in the top right corner.

5

Handwritten musical score for measures 6 and 7. Measure 6 starts with a mezzo-forte (**mf**) dynamic and a piano (**p**) dynamic. The first staff has a melodic line with slurs and ties. The second staff is marked "Solo". The piano part is mostly rests. Measure 7 continues the melodic lines with a forte (**f**) dynamic marking. A circled "5" is in the top right corner.

6

Handwritten musical score for the first system. The top staff is for the Flute, and the bottom two staves are for the Piano. The Flute part begins with a 'Solo' marking and a circled 'ff' dynamic. The Piano part also has a 'Solo' marking and a circled 'ff' dynamic. The score is divided into two measures by a vertical bar line.

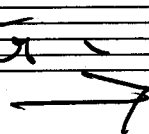
Handwritten musical score for the second system. The top staff is for the Flute, and the bottom two staves are for the Piano. The Flute part begins with a 'Solo' marking and a circled 'ff' dynamic. The Piano part also has a 'Solo' marking and a circled 'ff' dynamic. The score is divided into two measures by a vertical bar line.

Handwritten musical score for the first system. The system consists of five staves. The top staff is a treble clef staff, likely for the flute. The bottom four staves are grouped by a brace on the left, representing the string section. The music is in a key with one sharp (F#). The first measure shows the flute playing a melodic line with slurs and an accent. The string part has a 'Solo' marking and a circled sharp sign. The second measure continues the melodic development in the flute and a more active string accompaniment.

Handwritten musical score for the second system. The system consists of five staves. The top staff is a treble clef staff, likely for the flute. The bottom four staves are grouped by a brace on the left, representing the string section. The music is in a key with one sharp (F#). The first measure shows the flute playing a complex melodic line with many slurs. The string part has a dense, rhythmic accompaniment. The second measure continues the melodic development in the flute and a more active string accompaniment.

folgt Anfang bis ⑦

dann weiter



7

Handwritten musical score for measures 7-9. The score is written on five staves. The top staff has a treble clef and contains a melodic line with a circled 'x' and a circled '8'. The second staff has a treble clef and contains the word 'alle' and a few notes. The third and fourth staves have treble clefs and contain the word 'alle' and notes. The fifth staff has a bass clef and contains the word 'alle' and a complex melodic line with many notes and accidentals.

Handwritten musical score for measures 10-12. The score is written on five staves. The top staff has a treble clef and contains a melodic line with a circled '8' and a circled '8'. The second, third, and fourth staves have treble clefs and contain rests. The fifth staff has a bass clef and contains a melodic line with notes and accidentals.



Handwritten musical score for the first system. The system consists of five staves. The top staff is for the flute, marked with a circled '8' and a circled 'p'. It contains a melodic line with slurs and accents. The second staff is for the piano, marked with a circled 'p', and contains a melodic line with slurs. The third and fourth staves are for the piano, marked with a circled 'p', and contain sustained notes. The fifth staff is for the piano, marked with a circled 'p', and contains a rhythmic pattern of eighth notes.

Handwritten musical score for the second system. The system consists of five staves. The top staff is for the flute, marked with a circled '8' and a circled 'p'. It contains a melodic line with slurs and accents. The second staff is for the piano, marked with a circled 'p', and contains a melodic line with slurs. The third and fourth staves are for the piano, marked with a circled 'p', and contain sustained notes. The fifth staff is for the piano, marked with a circled 'p', and contains a rhythmic pattern of eighth notes.

Handwritten musical score for the first system. The top staff (flute) contains rapid sixteenth-note passages with slurs and a dynamic marking 'f'. The middle staves (piano) show a melodic line with slurs and a bass line with a steady eighth-note pattern. A circled '2' is visible at the end of the system.

Handwritten musical score for the second system, continuing the musical themes from the first system. It includes similar rapid passages in the flute and piano parts.

Handwritten musical score for measures 9 and 10. The score is written on five staves. The top staff is a treble clef with a key signature of one sharp (F#). It contains a complex melodic line with many beamed notes and slurs. The second staff is a bass clef with a key signature of one sharp (F#) and contains a melodic line with slurs. The third and fourth staves are also bass clefs with a key signature of one sharp (F#) and contain rhythmic patterns with slurs. The fifth staff is a bass clef with a key signature of one sharp (F#) and contains a melodic line with slurs. There are several circled symbols (circles with a sharp sign) and the text 'pizz' (pizzicato) written on the staves.

Handwritten musical score for measure 11. It consists of a single staff with a treble clef and a key signature of one sharp (F#). The staff contains a wavy line, possibly representing a tremolo or a specific performance instruction. There is a circled number '11' at the end of the staff.

Handwritten musical score for measures 12, 13, and 14. The score is written on five staves. The top staff is a treble clef with a key signature of one sharp (F#) and contains a complex melodic line with many beamed notes and slurs. The second staff is a bass clef with a key signature of one sharp (F#) and contains a melodic line with slurs. The third and fourth staves are also bass clefs with a key signature of one sharp (F#) and contain rhythmic patterns with slurs. The fifth staff is a bass clef with a key signature of one sharp (F#) and contains a melodic line with slurs. There are several circled symbols (circles with a sharp sign) and the text 'arco' (arco) written on the staves.

Handwritten musical score for the first system. The system consists of five staves. The top staff is a treble clef staff, likely for the flute, which contains a whole rest. The second staff is a bass clef staff, likely for the piano, containing a melodic line with eighth and sixteenth notes, including accidentals (sharps and flats). The third, fourth, and fifth staves are also bass clef staves, likely for the piano accompaniment, and contain whole rests. A vertical bar line divides the system into two measures.

Handwritten musical score for the second system. The system consists of five staves. The top staff is a treble clef staff, likely for the flute, containing a melodic line with quarter and eighth notes and accidentals. The second staff is a bass clef staff, likely for the piano, containing a melodic line with eighth and sixteenth notes and accidentals. The third, fourth, and fifth staves are also bass clef staves, likely for the piano accompaniment, containing whole rests. A vertical bar line divides the system into two measures.

12

13

folgt von Anfang bis (13)

dann weiter →

frei (Kadenz)  
Flöte

The image shows a handwritten musical score for a flute cadenza. It consists of four staves. The first staff is in treble clef and contains a circled number '77'. The second and third staves are in bass clef. The fourth staff is also in bass clef and contains a circled number '14' and a 'pp' dynamic marking. The music is written in a fluid, handwritten style with various notes, rests, and slurs. The first staff has a circled '77' at the beginning. The second and third staves have a circled '14' at the end. The fourth staff has a 'pp' dynamic marking at the beginning. The music is written in a fluid, handwritten style with various notes, rests, and slurs.

langsam beginnen - sempre cresc. + accel.



*Prestissimo (frei)*

pp  
Cresc.

3 4 19

Tempo (accel. .... →)

Handwritten musical score for the first system. It consists of five staves. The top staff is for the flute, showing a series of sixteenth-note runs. The second staff is for the first violin, with a circled plus sign and a fermata. The third staff is for the second violin, also with a circled plus sign and a fermata. The fourth staff is for the viola, with a circled plus sign and a fermata. The fifth staff is for the cello and double bass, with a circled plus sign and a fermata. The system is divided into two measures by a vertical bar line.

Handwritten musical score for the second system. It consists of five staves. The top staff is for the flute, showing a series of sixteenth-note runs. The second staff is for the first violin, with a circled plus sign and a fermata. The third staff is for the second violin, with a circled plus sign and a fermata. The fourth staff is for the viola, with a circled plus sign and a fermata. The fifth staff is for the cello and double bass, with a circled plus sign and a fermata. The system is divided into two measures by a vertical bar line. A circled number '20' is written in the right margin.

Handwritten musical score for strings, measures 10-12. The score is written on four staves. The first staff has a treble clef and a key signature of one sharp (F#). The second and third staves have a treble clef and a key signature of two sharps (F# and C#). The fourth staff has a bass clef and a key signature of two sharps (F# and C#). The music consists of rhythmic patterns of eighth and sixteenth notes. A large bracket on the left side groups the four staves. Above the first staff, there is a measure with a treble clef, a sharp sign, and a double bar line with a repeat sign.

Handwritten musical score for strings, measures 13-15. The score is written on four staves. The first staff has a treble clef and a key signature of one sharp (F#). The second and third staves have a treble clef and a key signature of two sharps (F# and C#). The fourth staff has a bass clef and a key signature of two sharps (F# and C#). The music consists of rhythmic patterns of eighth and sixteenth notes. A large bracket on the left side groups the four staves. Above the first staff, there is a measure with a treble clef, a sharp sign, and a double bar line with a repeat sign. To the right of the staves, there is a large handwritten signature and the text "Finis 1962".