

Die Madonna der  
Nähmaschine  
für Sopran und  
kleines Ensemble.

Notenheft <sup>R.63</sup>  
Adolf Scherbaum

DIE MADONNA  
DER  
NÄHMASCHINE

(Aus dem Zyklus v. A. De Nora)

für Sopran

Flöte  
Vibraphon  
Klavier  
SCHLAGWERK

1963 Adolf Scherbaum

langsam

FM

BAHNHOF DER KLEINEN

Handwritten musical score for 'Bahnhof der Kleinen'. The score is written for Soprano, Flute, Vibraphone, Piano, and Percussion. The tempo is marked 'langsam'. The key signature has one flat (B-flat). The score consists of five staves. The Soprano part begins with a rest followed by notes B-flat, A, G, F, E, D, C. The Flute part has a 'Cresc. vibr.' marking and a wavy line. The Vibraphone part has a 'pp' marking and notes B-flat, A, G, F, E, D, C. The Piano part has a 'pp' marking and notes B-flat, A, G, F, E, D, C. The Percussion part has a 'ppp' marking and a 'Pedal bis' marking. The score is divided into three measures.

Handwritten musical score for 'Ländlichen Stadt ist sie eingestiegen'. The score is written for Soprano, Flute, Vibraphone, Piano, and Percussion. The tempo is marked 'langsam'. The key signature has one flat (B-flat). The score consists of five staves. The Soprano part begins with notes B-flat, A, G, F, E, D, C. The Flute part has a 'Cresc. vibr.' marking and a wavy line. The Vibraphone part has a 'pp' marking and notes B-flat, A, G, F, E, D, C. The Piano part has a 'ppp' marking and notes B-flat, A, G, F, E, D, C. The Percussion part has a 'ppp' marking and a 'Pedal bis' marking. The score is divided into three measures. The lyrics are: LÄNDLICHEN STADT (frei) IST SIE EIN-GE-STIEGEN.

IHR ÄRMLICHES. KLEID VON SCHWARZEM KA-TUN LIEGT SAOBER UND

Handwritten musical score for the first system. It consists of five staves. The top staff is the vocal line with lyrics. The second and third staves are for a piano accompaniment. The bottom two staves are empty. The music is in a key with one sharp (F#) and a 3/4 time signature. Dynamics include p, mf, and ppp. There are various musical notations such as slurs, accents, and fermatas.

GLAT ÜBER SCHMALEN SCHULTERN UND EINEM HAGERN HUNGERNDEN

Handwritten musical score for the second system. It consists of five staves. The top staff is the vocal line with lyrics. The second and third staves are for a piano accompaniment. The bottom two staves are empty. The music continues in the same key and time signature. Dynamics include cresc. and mf. There are various musical notations such as slurs, accents, and fermatas.

Two sets of empty musical staves, each consisting of five lines.

(frei)

LEIB, - IHRE AUGEN LAGERN TIEF IM GRUNDE DER

Handwritten musical score for the first system. It consists of five staves. The top staff is the vocal line, with lyrics "LEIB, - IHRE AUGEN LAGERN TIEF IM GRUNDE DER". The second and third staves are for a string quartet. The fourth and fifth staves are for piano accompaniment. The score includes various musical notations such as notes, rests, dynamics (f, pp), and performance instructions like "(frei)" and "(poco rit...)".

KAMMERN WIE GE= SCHLAGENE HUNDE UND BLICKEN MAT

Handwritten musical score for the second system. It consists of five staves. The top staff is the vocal line, with lyrics "KAMMERN WIE GE= SCHLAGENE HUNDE UND BLICKEN MAT". The second and third staves are for a string quartet. The fourth and fifth staves are for piano accompaniment. The score includes various musical notations such as notes, rests, dynamics (f, pp), and performance instructions like "Cresc.." and "dim".

Als HÄTEN SIE LANGE ZEIT NÄCHTE DURCH-WACHT

SIE SITZT NOCH KAUM IN DEM ROLLENDEN ZUG EINE

HALBE STUNDE

DR.

FALLEN IHR SCHON DIE LIDER ZU VOR

Handwritten musical score for the first system. It consists of four staves. The top staff is a vocal line in G major, starting with a treble clef and a key signature of one sharp. The second and third staves are piano accompaniment, with the second staff starting with a piano (pp) dynamic and an 8-measure rest. The bottom staff is a bass line with a circled ppp dynamic. The system is divided into three measures.

(grasses mit nach dem ersten / frei)

MÜDIG - KEIT

DAS ARM' JUNGE

WEIB

SCHLÄFT EIN -

Handwritten musical score for the second system. It features a vocal line with lyrics: "MÜDIG - KEIT DAS ARM' JUNGE WEIB SCHLÄFT EIN -". The lyrics "mit. ... die ..." are written below the vocal line. The system includes piano accompaniment with a circled ppp dynamic, a bass line with a circled ppp dynamic, and a pedal marking. The system is divided into four measures.

bewegter

UND DAS RASSELN UND RÜTELN DER FAHRTI-MEIN SICKERT EIN TR-

Handwritten musical score for the first system. It consists of five staves. The top staff is the vocal line with lyrics: "UND DAS RASSELN UND RÜTELN DER FAHRTI-MEIN SICKERT EIN TR-". Dynamics include *mf*, *cresc. cresc...*, and *f*. Performance markings include accents and slurs. The second staff is piano accompaniment with *pp* dynamics. The third staff is a sustained piano accompaniment with *pp* dynamics. The fourth staff is bass line with *pp* dynamics and *cresc. cresc...* markings. The fifth staff is a sustained bass line with *pp* dynamics.

Raschel

ROM

UH

FRITZ

MEIN JUNGE

Handwritten musical score for the second system. It consists of five staves. The top staff is the vocal line with lyrics: "ROM UH FRITZ MEIN JUNGE". Dynamics include *pp* and *mf*. Performance markings include accents and slurs. The second staff is piano accompaniment with *pp* dynamics. The third staff is a sustained piano accompaniment with *pp* dynamics. The fourth staff is bass line with *pp* dynamics and *mf* markings. The fifth staff is a sustained bass line with *mf* dynamics.



PFEIF DOCH NICHT SO ... ABER SOLCH EINE PFEIFE O - HO O -

HO ICH WEIß KLINGT EBEN ZU WUNDERVO - LL

UND

DANN

GE- BLASEN MIT SOLCHER

LUNGE

Handwritten musical score for the first system. It consists of four staves. The top staff is the vocal line with lyrics: "UND DANN GE- BLASEN MIT SOLCHER LUNGE". The second staff is the piano accompaniment, with a circled 'f' dynamic marking and the word 'Flauto 3.' written below it. The third staff is the bass line, with a circled 'f' dynamic marking and the word 'Pedal' written below it. The fourth staff is a lower bass line. The music is in a key with one sharp (F#) and a common time signature.

KEIN STABSTROH - PETER BLÄST BESSER JA - WOLL

DOCH NUN IST'S GENUG

Handwritten musical score for the second system. It consists of four staves. The top staff is the vocal line with lyrics: "KEIN STABSTROH - PETER BLÄST BESSER JA - WOLL DOCH NUN IST'S GENUG". The second staff is the piano accompaniment, with a circled 'ff' dynamic marking. The third staff is the bass line, with a circled 'ff' dynamic marking. The fourth staff is a lower bass line. The music is in a key with one sharp (F#) and a common time signature.

GE NUG HÖRST DU SIEH, MUTCHEN HÄLT SICH DIE OHREN SCHON

ZU KANN NICHT MEHR BEI DIR STEHEN UND SPIELEN

MUß WIEDER NÄHN OHNE RAST UND ROH FÜR DIE REICHEN KINDERCHEN

KLEIDCHEN NÄHEN DIE AM WERKTAG IM SONNTAGSSTADT GEHEN

UND KLEIDER FÜR IHRE SCHÖNEN MAMMAS DIE JENE FEDERN AM

HUTE HABEN WEIßT DU STRÄPPEN UND PELZ BOAS  
 + b + i + + + + +

WIE MEINEM KNABEN SIE SO GE - FIELEN

Handwritten musical score for the first system. It consists of three staves. The top staff is a vocal line in treble clef with lyrics "WIE MEINEM KNABEN SIE SO GE - FIELEN". The middle staff is a piano accompaniment in bass clef. The bottom staff is a piano accompaniment in bass clef with chord symbols. Large handwritten numbers "5" and "4" are written across the middle and bottom staves respectively. There are also some handwritten notes and markings on the staves.

EIJA MEIN SOHN EIJA - PO - PEI SCHLAF NUR SCHLAF UND

Handwritten musical score for the second system. It consists of three staves. The top staff is a vocal line in treble clef with lyrics "EIJA MEIN SOHN EIJA - PO - PEI SCHLAF NUR SCHLAF UND". The middle staff is a piano accompaniment in bass clef. The bottom staff is a piano accompaniment in bass clef with chord symbols. Large handwritten numbers "5" and "4" are written across the middle and bottom staves respectively. There are also some handwritten notes and markings on the staves.

TRÄUME DA - VON -

RÜLLE . . . ROLLE .

ROLLERT DAS WÄGELIN

Handwritten musical score for the first system. It consists of three staves. The top staff is the vocal line, starting with a treble clef and a key signature of one flat. The lyrics are written above the notes. The middle staff is the piano accompaniment, starting with a 4/4 time signature. The bottom staff is the piano accompaniment, starting with a 4/4 time signature. Dynamic markings include *p*, *cresc...*, and *ppp*. There are also some handwritten annotations like a circled 'P' and a circled '4'.

*accel...* →

WÄHREND . . . ICH MIT DEN HÄNDEN DEN FLINKEN NÄH'

ROLLE ROLLE

Handwritten musical score for the second system. It consists of three staves. The top staff is the vocal line, starting with a treble clef and a key signature of one flat. The lyrics are written above the notes. The middle staff is the piano accompaniment, starting with a 4/4 time signature. The bottom staff is the piano accompaniment, starting with a 4/4 time signature. Dynamic markings include *f*, *cresc...*, and *ppp*. There are also some handwritten annotations like a circled 'f' and a circled '4'.

( gr. rit + dim .....

ROLL ICH DEN WAGEN MIT EINEM BEIN JUNGE SCHLAF

Handwritten musical score for the first system. The vocal line (top staff) contains the lyrics "ROLL ICH DEN WAGEN MIT EINEM BEIN JUNGE SCHLAF". The piano accompaniment (bottom two staves) includes dynamic markings such as *ppp* and *mf*, and a large handwritten number "4" in the middle of the first two staves. The score is written in a key with one flat and a 4/4 time signature.

EIN .. JUNGERE SCHLÄFT NOCH SCHON

Handwritten musical score for the second system. The vocal line (top staff) contains the lyrics "EIN .. JUNGERE SCHLÄFT NOCH SCHON". The piano accompaniment (bottom two staves) includes dynamic markings such as *pp* and *ppp*, and a handwritten note "gr. rit + dim ..." under the piano part. The score continues in the same key and time signature as the first system.



Beifüg (Korrek)

ABER NUN FEST IN DIE MA - SCHINE HI - NEIN

Handwritten musical score for the first system. The vocal line (top staff) begins with a circled 'f' dynamic marking. The piano accompaniment (bottom two staves) features a circled 'f' dynamic marking and a circled '4' time signature. The music is written in a key with one sharp (F#) and includes various rhythmic patterns and rests.

FEST GE - TRETEN MORGEN MÜSSEN <sup>DIE</sup> ~~ZWEI~~ KLEIDER FERTIG - SEIN

Handwritten musical score for the second system. The vocal line (top staff) continues with the lyrics. The piano accompaniment (bottom two staves) includes a circled 'f' dynamic marking and continues with rhythmic accompaniment. The system concludes with a double bar line.

Four empty musical staves at the bottom of the page, intended for further notation.

RATA TA . RATATA RATATA GEH NDR —

MEIN RÄDCHEN GEH . RATATA . RATATA RATATA

SO IST'S RECHT      IMMER <sup>so!</sup>      RATA TA      RATA TA

Handwritten musical score for the first system. It consists of four staves. The top staff is the vocal line, and the bottom three are piano accompaniment. The lyrics are: SO IST'S RECHT, IMMER <sup>so!</sup>, RATA TA, RATA TA. The music includes various notes, rests, and dynamic markings. There are circled numbers 1 and 2 in the vocal line. A large bracket on the left side groups the piano accompaniment staves.

RATA TA      TA      NUN      WARUM      LANGSAMER

Handwritten musical score for the second system. It consists of four staves. The top staff is the vocal line, and the bottom three are piano accompaniment. The lyrics are: RATA TA, TA, NUN, WARUM, LANGSAMER. The music includes various notes, rests, and dynamic markings. There are circled numbers 1 and 2 in the vocal line. A large bracket on the left side groups the piano accompaniment staves. A box labeled 'Pedal' is present in the piano accompaniment. A large handwritten '5' is written in the piano accompaniment staves.

Empty musical staves for the third system, consisting of four staves.

Handwritten musical score for the first system. It consists of five staves. The top staff is the vocal line with lyrics: "JETZ RA TA TA RA TA TA". The second and third staves are for a woodwind instrument (likely flute or clarinet). The fourth and fifth staves are for a string instrument (likely violin or viola). The score includes dynamic markings such as *mf* and *f*, and a performance instruction: "immer langsamer werden.....".

Handwritten musical score for the second system. It consists of five staves. The top staff is the vocal line with lyrics: "RA TA TA BLEIBST DU MIR STEHN ZU- LETZT". The second and third staves are for a woodwind instrument. The fourth and fifth staves are for a string instrument. The score includes dynamic markings such as *mf* and *f*.

RAT RUCK .. *großes mit...druck*

*ruhig (frei)*  
 DER ZOG HÄLT DIE SCHLÄFRIN ER-WACHT UND



(frei) sprechen

RUHIG!

SIE STEHT AUF REIBT SICH DIE AUGEN UND

IST NICHT MEIN JUNGE  
BEI MIR  
HAT NICHT NOCH EBEN SEIN,  
WÄGELN GEROLLT  
HÖRTE ICH NICHT  
MEINER NÄHMASCHINE GEWÄHNTES  
GERLICK

OH SCHÜRZT SICH DIE HÄNDE VORS BLASSE GE-SICHT UND

BRICHT IN TRÄNEN SINNLOS SCHLUCHZENDE TRÄNEN AUS ZU HAUS

WAR SIE DOCH EBEN NICHT (frei) OH WO IST IHR ZÜ - HAUS



(Preis) *ritardando* **DACH** *ruhig (schreitend) erzählend!*

POR SIE GIBT ES NICHT HEIMAT HERD UND DACH

AUS DER IHRIGEN TRIEB SIE EIN REICHER MI - NAÖS DEM SIE ELENDE HILT GROSCHEN

SCHULDIG BLIEB      SCHULDIG      WEIL SIE SEIT WOCHEN SCHON      OHNE ARBEIT

Handwritten musical score for the first system. It consists of four measures. The top staff is a vocal line with lyrics: "SCHULDIG BLIEB", "SCHULDIG", "WEIL SIE SEIT WOCHEN SCHON", "OHNE ARBEIT". The second staff is a piano accompaniment with a 4/4 time signature. The third and fourth staves are for other instruments, possibly strings or woodwinds, with various notes and dynamics like "pp" and "p".

OHNE VER-DIENST UND LOHN NUR      IMMER IN IHREN VIER WÄNDEN SAß

Handwritten musical score for the second system. It consists of four measures. The top staff is a vocal line with lyrics: "OHNE VER-DIENST UND LOHN NUR", "IMMER IN IHREN VIER WÄNDEN SAß". The second staff is a piano accompaniment with a 4/4 time signature. The third and fourth staves are for other instruments, possibly strings or woodwinds, with various notes and dynamics like "mf" and "pp".

(frei)

SIE SAß AN IHRES KINDES BETT OHNE UNTER LAß

VIELE TAGE UND NÄCHTE DIE WOLLEN LANG ZITERN UND

SCHICKSAL BANG UND SAH WIE DIE ELEND KRANKHEIT DIE SCHWINDSUCHT

Handwritten musical score for the first system. It consists of a vocal line (Soprano) and piano accompaniment. The vocal line has lyrics: "SCHICKSAL BANG UND SAH WIE DIE ELEND KRANKHEIT DIE SCHWINDSUCHT". The piano accompaniment includes large handwritten numbers "5" and "4" in the second and third measures, and "4" in the fourth measure. Dynamic markings include *mf* and *f*. There are also some handwritten annotations like "Hant" and various accidentals.

FRAB IHREN EINZIGEN SOHN (frei - sehr langsam) JAHREN SÜßEN JUNGEN

Handwritten musical score for the second system. It consists of a vocal line (Soprano) and piano accompaniment. The vocal line has lyrics: "FRAB IHREN EINZIGEN SOHN (frei - sehr langsam) JAHREN SÜßEN JUNGEN". The piano accompaniment includes dynamic markings like *p* and *pp*. There are also some handwritten annotations like "Hant" and various accidentals.

(accelerando)

HERZ UND LUNGEN UND WANGEN UND ÄRMCHEN UND BLONDE LOCKEN

Handwritten musical score for the first system. It consists of three staves. The top staff is the vocal line, starting with a treble clef and a key signature of one sharp (F#). The lyrics are written above the notes. The middle staff is the piano accompaniment, starting with a treble clef. The bottom staff is the piano accompaniment, starting with a bass clef. There are various musical notations including notes, rests, and dynamic markings like 'p' and 'f'.

GLEICH DER SONNE DIE LANGSAM KRIecht DEN SCHNEE MÄRZ in b

Handwritten musical score for the second system. It consists of three staves. The top staff is the vocal line, starting with a treble clef and a key signature of one flat (Bb). The lyrics are written above the notes. The middle staff is the piano accompaniment, starting with a treble clef. The bottom staff is the piano accompaniment, starting with a bass clef. There are various musical notations including notes, rests, and dynamic markings like 'p' and 'f'. A large '4' is written in the middle of the system, possibly indicating a measure or a section. The word 'Pedal' is written in the bottom staff.

Reinig

IHR MUTER - HERZ VER - GAB - VER - GAB DAS SIE NUR EINE TRETMASCHINE

Handwritten musical score for the first system. The vocal line is in G major and 3/4 time, with lyrics: "IHR MUTER - HERZ VER - GAB - VER - GAB DAS SIE NUR EINE TRETMASCHINE". Dynamic markings include *mp* and *p*. The piano accompaniment starts in 3/4 time and changes to 4/4. It includes a *pp* marking and a "Pedal" instruction with a 20-measure pedal point.

ist, DIE STILLE NICHT STEHN DARF TOTERSCHROCKEN DIE WEITERSEHEN MUß OHNE ZU

Handwritten musical score for the second system. The vocal line continues with lyrics: "ist, DIE STILLE NICHT STEHN DARF TOTERSCHROCKEN DIE WEITERSEHEN MUß OHNE ZU". Dynamic markings include *mf*, *p*, and *pp*. The piano accompaniment is in 7/4 time.

STOCKEN UND NICHTS ZU HÖREN HAT DIE MA-SCHINE ALS EIN

EINZIGES WORT — VER- DIENE VER- DIENE

sehr ruhig (frei)

EIN MENSCH VER - GIBT DA - RAUF ZU - WEILEN

ppp

ppp

ppp Pachel bis

bewegter (accel)

SCHON EILEN DIE LETZTEN VOR - BEI AN DER WEINENDEN FRAU

ppp

ppp Pachel bis



RAUH . HERRSCHT SCHARFFNER SIE AN DA RAFFT SIE SICH ENDLICH EM -

5  
4  
4  
4  
4

pp mf

- POR UND VER - LÄBT DEN WA - GEN -

p mf

dim

(accel.)

DAM JETZT

SIEM

NOCH AUF DES TRITTBRETS

PLAN

FLEGT ÜBER IHR

Handwritten musical score for the first system. It features a vocal line in G major with lyrics "DAM JETZT SIEM NOCH AUF DES TRITTBRETS PLAN FLEGT ÜBER IHR". The piano accompaniment is in 4/4 time, with a "Pallagrat" section indicated. Dynamics include *mf*, *f*, and *mf*. The score is written on three staves: vocal, piano, and a lower piano staff.

ANLITZ WIE EIN ZUG

LICHT WEIßER TRUBEN

PLÖTZLICH EIN

FLOG

Handwritten musical score for the second system. It continues the vocal line with lyrics "ANLITZ WIE EIN ZUG LICHT WEIßER TRUBEN PLÖTZLICH EIN FLOG". The piano accompaniment continues in 4/4 time. Dynamics include *f* and *pp*. The score is written on three staves: vocal, piano, and a lower piano staff.

(breit) (langsam)

GLÜCKSELIGEN LÄCHELNS, WIE GESCHAH IHR EIN

(großes mit + dir...)

WUNDER LACHT SIE IM FIEBER - WAHN

*sehr langsam*

ACH NEIN      ACH TROG      NUR AN IHR OHR —      RUF EINMAL

6      4      4

SCHLÜG      HALBER - LOSCHEN      EIN      KNABENSTIMMLEIN AUS DER      ME-NGE

5      4      4

UND IHRE GE - RÖTETEN AUGEN SAHN IN DEM GE-DRÄNGE EINEN

(p) (p)

pp ped. -

(so ruhig wie möglich)

5

4

BLAVEN BÜBEN MA - TROSENKRAGEN - WIE IHR JUNGE EINEN TRUG

ppp ppp

pp

6

4

4

4

4

Adagio    So ruhig wie möglich

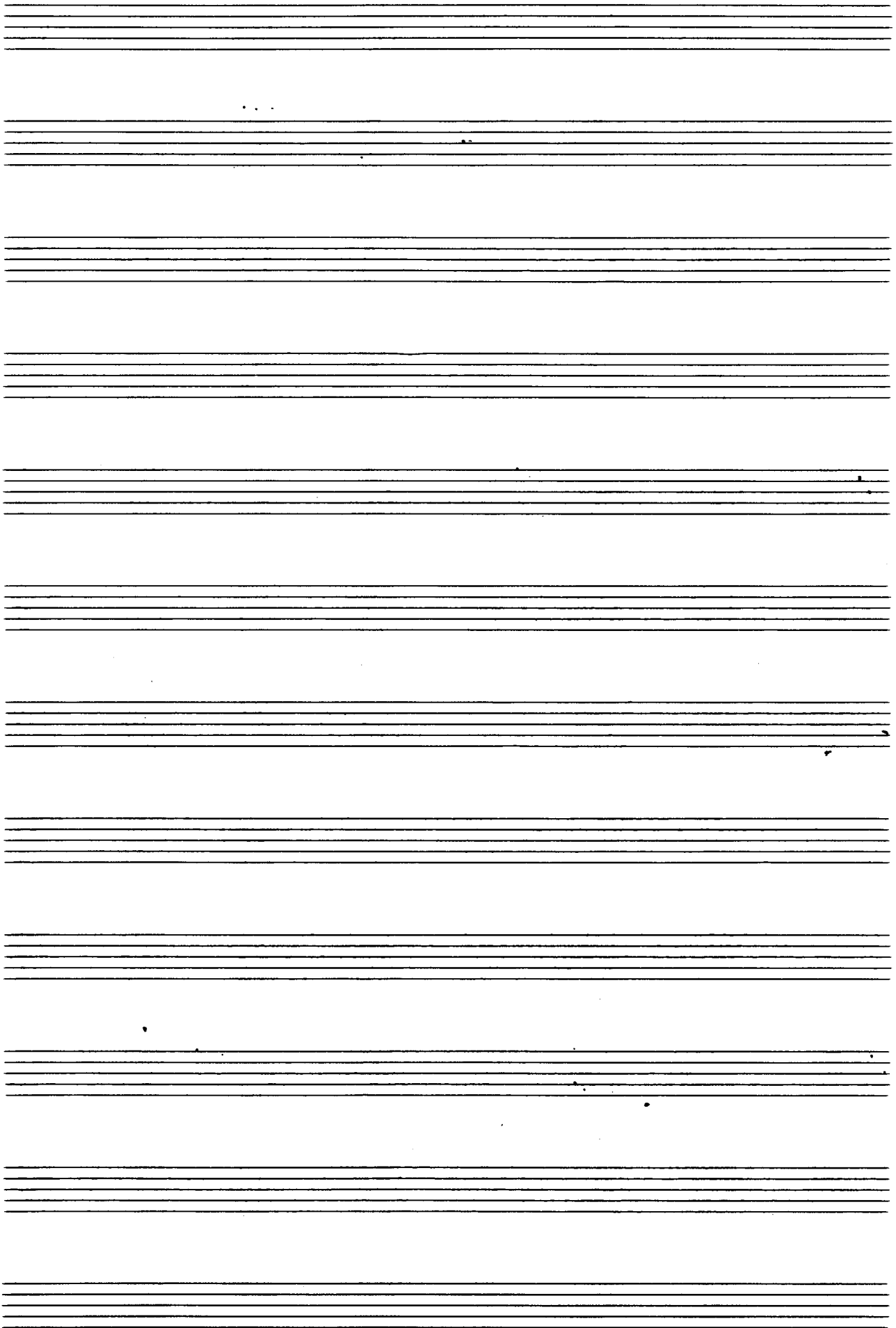
IHR STOLZ                      IHRE Wonne                      EH DAB MAN UM IHREN LETZTEN

GROSCHEN                      IHN VOR ZWEI TAGEN ZU                      GRABE GE-TRA GEN .....

DARUM LÄCHELT DIE ARME MA - DONNA

Handwritten musical score for the first system. It features a vocal line and a piano accompaniment. The piano part includes a large handwritten '5' on the first staff and a '4' on the second staff. The lyrics are 'DARUM LÄCHELT DIE ARME MA - DONNA'. The score includes various musical notations such as notes, rests, and dynamic markings like 'pp'.

Handwritten musical score for the second system. It continues the vocal and piano parts from the first system. The piano part includes a 'Pedal' marking and a 'LANGS halten.' instruction. The system ends with a box containing the word 'FIN.'. The score includes various musical notations such as notes, rests, and dynamic markings like 'ppp'.



38



Sehr ruhig

BRUNNEN DER KLEINEN LÄNDLICHEN STADT

IST SIE EINGE-STIEGEN

IHR ÄRMELICH KLEID

VON SCHWARZEM KAT- TUN LIEGT SAUBER UND

GLATT... ÜBER SCHMALEN SCHULTERN UND EINEM

HA-GER-EN HUN-GER-DEN LEIB

IHRE AUGEN LÄGERN TIEF IM GRUNDE DER

KAMMEAN WIE GE-SORGE-NE HUNDE UND  
 BLICKEN MATI ALS HÄTTEN SIE LANGE  
 ZEIT NÄCHTE DURCH-WACHT  
 etwas bewegter  
 SIE  
 SITZT NOCH KAUM IN DEM ROLLENDEN  
 ZUG EINE HALBE STUNDE DA  
 f pp  
 FALLEN IHR SCHON LIDER JU VOR  
 DIE MÜ-DIG-KEIT  
 (frei) DAS ARME JUNGE WEIB SCHLÄFT EIN  
 pp mit... ppp

BEWEGT

UND INS RASSELN UND RÜTTELN DER FAHRT HI —

— NEIN SICKERT EIN TRAUM.

UH?

FRITZ MEIN JUNGE PFEIF DOCH NICHT SO —

ABER SOLCH EINE PFEIFE — OH — OH — OH —

— ICH WEIß KLINGT EB EN

ZU — WUNDER — VOLL !

UND DANN GE — BLASEN MIT SOL — CHER

LUNGE ! KEIN STABSTROM — PETER BLÄST

BE SSER, JA — WOLL ! DOCH NUN IST'S GE —

NUG — GE — NUG HÖRST DU

(frei)

SIEM, MÜTTCHEN HÄLT SICH DIE OHREN SCHON ZU!

Musical staff with notes and lyrics: SIEM, MÜTTCHEN HÄLT SICH DIE OHREN SCHON ZU!

KANN NICHT MEHR BEI DIR STEHEN UND SPI-LEN?

Musical staff with notes and lyrics: KANN NICHT MEHR BEI DIR STEHEN UND SPI-LEN?

Preto

MUß WIE DER NÄHN OHNE RAST UND

Musical staff with notes and lyrics: MUß WIE DER NÄHN OHNE RAST UND

RUH, FÜR DIE REI-ZEN KIN-DER-CHEN KLEIDHEN

Musical staff with notes and lyrics: RUH, FÜR DIE REI-ZEN KIN-DER-CHEN KLEIDHEN

NÄHN, DIE AM WERK-TRAG IM SONNTAGS-STARTE

Musical staff with notes and lyrics: NÄHN, DIE AM WERK-TRAG IM SONNTAGS-STARTE

GEHN - UND KLEIDER FÜR IHRE

Musical staff with notes and lyrics: GEHN - UND KLEIDER FÜR IHRE

SCHÖNEN MAMAS DIE IENE FEDERN AM

Musical staff with notes and lyrics: SCHÖNEN MAMAS DIE IENE FEDERN AM

HUTE HABEN, (frei) WEIßT DU? STRAUß-FEDERN

Musical staff with notes and lyrics: HUTE HABEN, (frei) WEIßT DU? STRAUß-FEDERN

UND PELZ-BOAS, (Ruhig) WIE MEINEM KNABEN

Musical staff with notes and lyrics: UND PELZ-BOAS, (Ruhig) WIE MEINEM KNABEN

SIE SO GE-FIE-LEN

Musical staff with notes and lyrics: SIE SO GE-FIE-LEN

(frei)

EI JA, MEIN SOHN!

Musical staff with notes and lyrics: EI JA, MEIN SOHN!

Runig, fließend

Musical staff with notes and lyrics: Runig, fließend

EI - JA - PO - PEI — SCHLAF NUR, SCHLAF UND

pp

TRÄUME DA - VON — Allegretto (leicht)

RULLE RULLE ROLL ICH DEN WAGEN MIT

pp

EINEM BEIN — RULLE JUNGE

pp

SCHLAF EIN —! JUNGE LE —

pp

SCHLÄFT ADEM SCHON —

pp

ADAGIO

(frei - steigern) ABER NUN FEST, FEST IN DIE MASCHINE HINEIN!

pp

ALLEGRO

(RASCH) FEST GE - TRETEN, MORGEN MÜSSEN ZWEI

f

KLEIDER FERTIG SEIN —

f

RA TA TA RA TA TA RA TA TA

f

(STEIGERN)

GEH NUR, MEIN RÄDCHEN GEH!

Musical staff with notes and rests.

RA TA TA RATA TA RATA TA SO IST'S RECHT,

Musical staff with notes and rests.

INMER SO!

RATA TA

RA TA TA

Musical staff with notes and rests.

RATA RA TA - TA

Musical staff with notes and rests.

(frei)

NUN

WARUM

LANGSAMER

JETZT ?

Musical staff with notes and rests.

sv. rit....

RA - TA -

TA -

RA - TA -

TA -

Musical staff with notes and rests.

RA - TA -

TA -

(frei)

BLEIBT DU MIR

Musical staff with notes and rests.

STEHN ZU - LETZT?

ADAGIO

RATI

Musical staff with notes and rests.

RUCK

Musical staff with notes and rests.

ADAGIO

DER ZUG HÄLT

DIE

SCHLÄFRIN

ER -

Musical staff with notes and rests.

WACHT

UND

SCHAUT WIE IRR -

IN DAS

Musical staff with notes and rests.

MENSCHEN GE - WIRR

Musical staff with notes and rests.

(leicht)

MAS DIE WAGEN VER - LÄBT UND VO - RÜBER - TROLLT -

WO BIN ICH DENN,

WO ? - IST NICHT MEIN JUNGE BEI

MIR ? HAT NICHT NOCH EBEN + SEIN

WIE GE WÄGLEIN GE - ROLLT ?

HÖRTE ICH NICHT - MEINER NÄHMASCHINE

GE WOHNTE GE - KLIRR ?

(frei) (SIE STEHT AUF : REIBT SICH DIE AUGEN : UND - OH -

STERNEN...

SCHLÄGT SICH DIE HÄNDE VORS BLASSE GESICHT :

UND BRICHT IN TRÄNEN SINNLOS

steigern

SCHUCHZENDE TRÄNEN AUS

(frei) (ADAGIO)

ZU HAUS WAR SIE DOCH EBEN?

NICHT? O WO IST IHR ZU - HAUS?

FÜR SIE GIBT ES NICHT HEI MAT, HERD UND DACH!

**RUHIG**

AUS DER IH RIGEN TRIEB SIE EIN

REICHER HI - NAUS, DEM SIE FL ENDE

MIET GROSCHEN SCHULDIG BLIEB,

SCHULDIG WEIL SIE SEIT WOCHEN SCHON

OHNE ARBEIT OHNE VER - DIENST UND

LOHN - NUR IMMER IN IHREN VIER WÄNDEN SAß

**RUHIG** SIE SAß, AN IHRES KINDES BET OHNE

UNTER - LAB VIELE TAGE UND NÄCHTE DIE

WOCHEN LANG



ständig steigern..... → im Tempo und Stärke.

ZITTERND UND SCHICKSAL-BANG UND

mf cresc... → <

SAH... WIE DIE ELENDE - KRANKHEIT SCHWIND-SUCHT

f <

FRAB IHREN EINZIGEN SOHN IHRES

777 <

SÜBEN - JUNGEN HERZ UND LUNGEN UND

WANGEN UND ÄRMCHEN UND BLONDE LOCKEN

TREIBEN... → 3 3

GLEICH DER SONNE DIE LANGSAM FRIBT DEN

777

SCHNEE IM MÄRZ

MÄRZ

PRESTO (gr. rit. .... dim) ADAGIO (IHR

4 777 PP ff # d

MÜTTER - HERZ VER-

PP f

GAB VER - GAB

rit. .... dim... 4 d

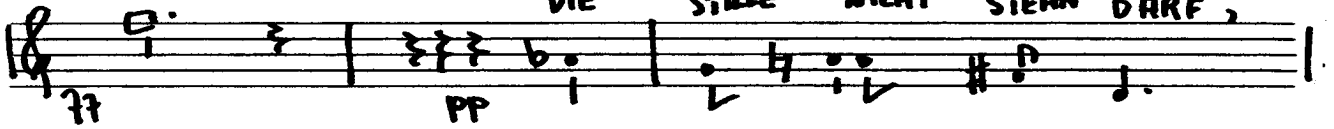
(frei) DAS SIE NUR EINE TRETMASCHINE

PP. cresc.

ist,

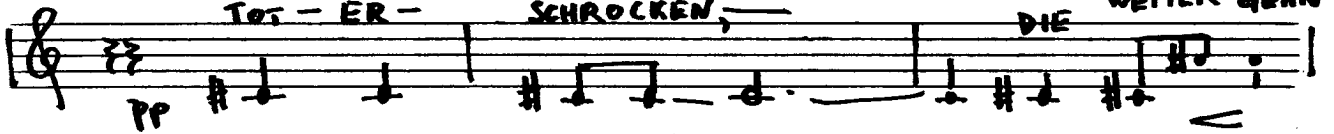
**[ADAGIO] FREI**

DIE STILLE NICHT STEHN DARF,

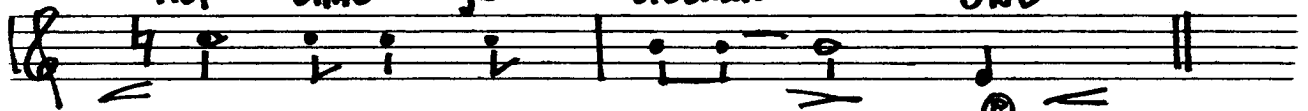


TOT - ER - SCHROCKEN,

DIE WEITER-GEHN

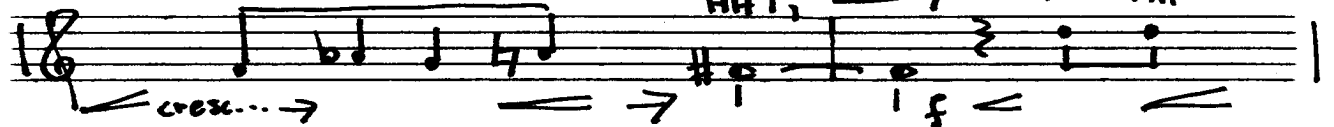


MUß ohne zu STOCKEN - UND

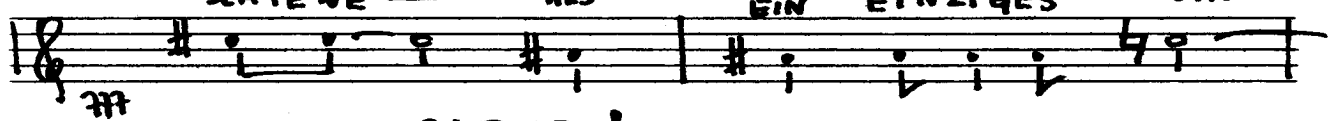


NICHTS ZU HÖREN

HAT, DIE MA -

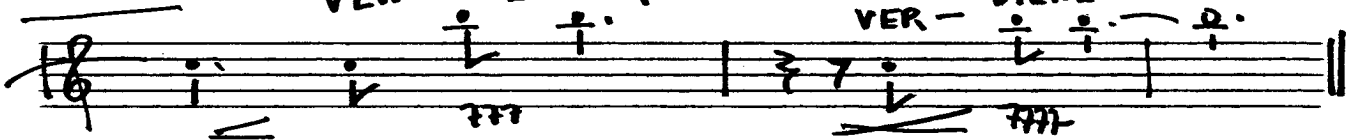


- SCHIENE - ALS EIN EINZIGES WORT: -



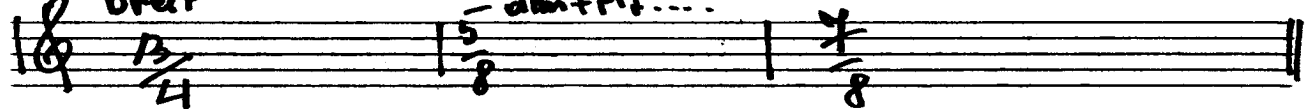
VER - DIENE !

VER - DIENE -



breit

dim. rit. ....

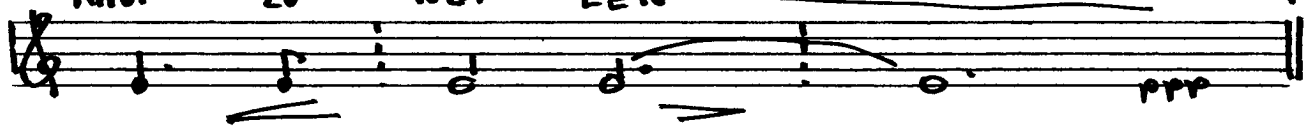


**ADAGIO [FREI]**

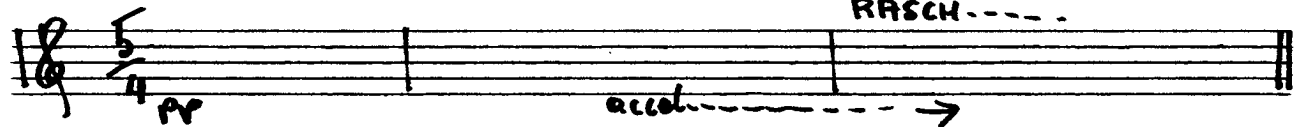
EIN MENSCH VER - GIBT DA -



RAUF ZU - WGI - LEN

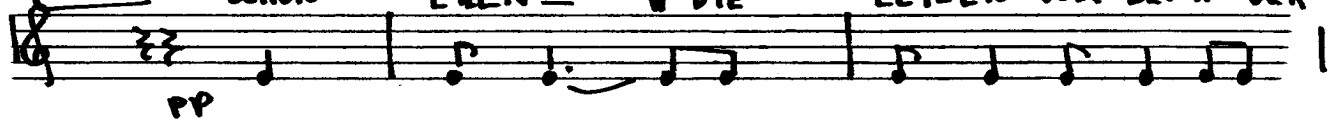


RASCH.....



**[RASCH]**

SCHON EHEN - DIE LETZEN VOR - BEI AN DER



WEI NEN DEN FRAU

