

breit

The image shows a handwritten musical score for two staves, likely for Violins 1 and 2. The tempo or performance instruction 'breit' is written above the first measure. The score consists of five measures, each marked with a circled number (1, 2, 3, 4, 5) at the end. The notation includes various musical symbols such as notes, rests, accidentals, and dynamic markings. The first measure is marked with a '1' and a '2' on the left, indicating the first and second staves. The second measure is marked with a '2' on the left. The third measure is marked with a '3' on the left. The fourth measure is marked with a '4' on the left. The fifth measure is marked with a '5' on the left. The score is written in a clear, legible hand.

Handwritten musical score for Adolf Scherbaum's "Musik in 4 Teilen für Flöte Solo, Streichorchester, 3 Trompeten und Schlagzeug, SWV 135 (1963)". The score is written on five systems of staves. The first system has two staves with treble and bass clefs, featuring complex rhythmic patterns and accidentals. The second system also has two staves, with a circled "6" above the first staff and a circled "7" above the second staff. The third system has two staves, with a circled "8" above the first staff. The fourth system has two staves, with a circled "9" above the first staff. The fifth system has two staves, with a circled "10" above the first staff. The score includes various musical notations such as notes, rests, accidentals, and dynamic markings like "f" and "p". There are also some handwritten annotations like "gr. rit..." and "fin Teil".

Teil 2 (Moderato)

Handwritten musical score for "The Rose Tree" in 2/4 time. The score is written on four systems of two staves each. The first system includes tempo markings "Andante" and "Moderato". The second system includes a "P" dynamic marking. The third system includes a "pp" dynamic marking. The fourth system includes "pp" and "f" dynamic markings, and the word "accelerando" written above the staff. The score is numbered 1 through 6 at the beginning of each system.

Presto

⑦

2x D.C.
ohne ||:||
ab.

Presto (accel.)

#

→

Fine
Teil ②

Teil 3) sehr langsam (8/8)

①

pp (pizz)

②

ppp FIN.

③

pp

f

⑤ ⑥

f

Hrp

> dim

⑦

D.C.
al Fin.

→
rückwärts - Teil 4

Presto

Teil 4

Handwritten musical score for 'Teil 4' in 4 parts, marked 'Presto'. The score is written on five systems of staves. The first system shows a 6/4 time signature and a key signature of one sharp (F#). The notation includes various musical symbols such as notes, rests, accidentals, and dynamic markings. The score is divided into five measures, each marked with a circled number (1, 2, 3, 4, 5). The notation is handwritten and appears to be a student or working draft.



Teil 1.

breit

Br. B

CTB

①

②

③

④

⑤

⑥

Handwritten musical score for three systems. The first system is marked with circled numbers 7 and 8. The notation includes various musical symbols such as notes, rests, and dynamic markings like *ppp* and *f*. The second system continues the musical notation. The third system concludes with a double bar line, a large 'A' symbol, and the word 'FIN' written above the staff. Below the third system, there are four empty staves.

Mod. (Teil 2)

Handwritten musical score for a flute solo, consisting of six systems of staves. The notation includes various musical symbols such as notes, rests, accidentals, and dynamic markings. Circled numbers 1 through 5 are placed above the staves, likely indicating measures or sections. The score is written in a single system with a key signature of one sharp (F#) and a time signature of 2/4.

System 1: Flute part (B) and Piano part (P). Dynamics: *pp*, *p*. Circled number 1.

System 2: Flute part (B) and Piano part (P). Dynamics: *pp*, *pp*. Circled number 2.

System 3: Flute part (B) and Piano part (P). Dynamics: *f*, *p*. Circled number 4.

System 4: Flute part (B) and Piano part (P). Dynamics: *f*, *p*. Circled number 5.

System 5: Flute part (B) and Piano part (P). Dynamics: *pp*, *pp*. Circled number 6. Marking: *accel...*

System 6: Flute part (B) and Piano part (P). Dynamics: *mf*, *mf*. Marking: *PRESTO*.

Handwritten musical notation on a grand staff. The top staff begins with a treble clef and a key signature of one flat (B-flat). The bottom staff begins with a bass clef. The notation includes various rhythmic values, including eighth and sixteenth notes, and rests. A double bar line is present in the middle. Above the final measure of the top staff, there is a circled number 7. To the right of the final measure, there is a handwritten note: "2. x D.C. al f".

Presto (pr. accel.....)

Handwritten musical notation on a grand staff. The top staff begins with a treble clef and a key signature of one flat (B-flat). The bottom staff begins with a bass clef. The notation includes various rhythmic values, including eighth and sixteenth notes, and rests. A double bar line is present in the middle. Above the final measure of the top staff, there is a circled number 7.

Handwritten musical notation on a grand staff. The top staff begins with a treble clef and a key signature of one flat (B-flat). The bottom staff begins with a bass clef. The notation includes various rhythmic values, including eighth and sixteenth notes, and rests. A double bar line is present in the middle. Above the final measure of the top staff, there is a circled number 7. To the right of the final measure, there is a handwritten note: "Fin Teil 2".

unblättern
Teil ③

sehr langsam Teil 3

①

B *pp* (*pizz*)

F: *pp* (*pizz*)

②

B *ppp* **FIN**

F: *ppp*

③

B *pp arco*

F: *pp*

④

B *pp*

F: *pp*

⑤

B *f*

F: *f*

⑥

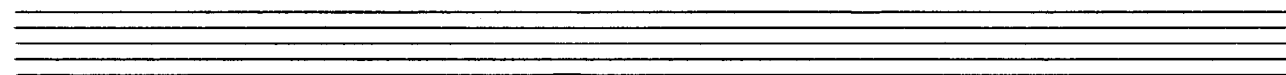
B *ff*

F: *ff*

Handwritten musical notation on two staves. The top staff begins with a treble clef and a key signature of one flat (B-flat). The bottom staff begins with a bass clef. The notation includes eighth and sixteenth notes, rests, and a double bar line. Above the top staff, the word "dim" is written with a dashed line. Above the bottom staff, the word "Fin." is written. To the right of the double bar line, the text "D.C. al Fin." is written.

unblättern (Teil 4)

Presto (2) Teil 4



Handwritten musical score for Adolf Scherbaum's "Musik in 4 Teilen für Flöte Solo, Streichorchester, 3 Trompeten und Schlagzeug, SWV 135 (1963)". The score is written on six systems of staves. The first system shows a treble and bass staff with a key signature of one sharp (F#). The second system includes a circled "5" and a first ending bracket. The third system includes a circled "6". The fourth system is marked "Solo" and "solo CELLO". The fifth system includes a circled "7" and a first ending bracket. The sixth system includes a circled "8" and a first ending bracket. The score ends with the instruction "2. + D.C. dann weiter." and a circled "P".

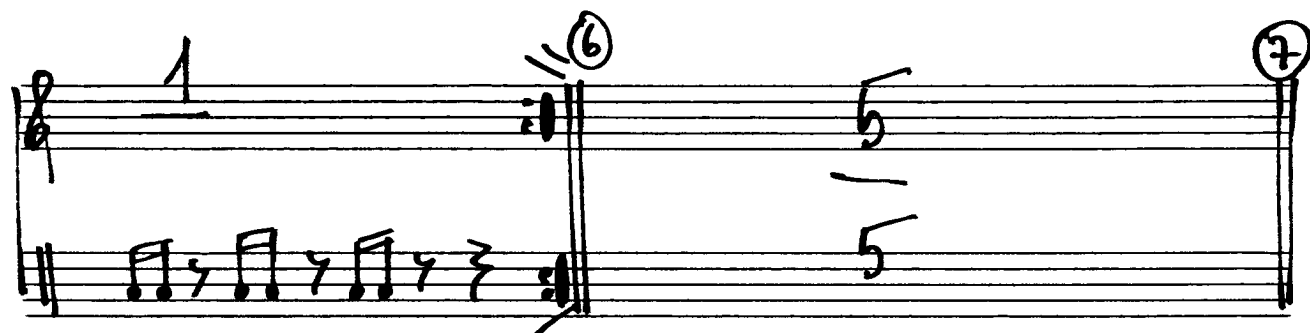
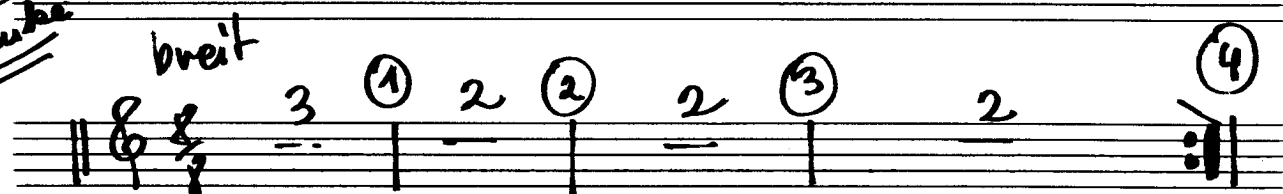
Handwritten musical notation for measures 9 and 10. The notation is written on two staves. The first staff has a treble clef and a key signature of one sharp (F#). The second staff has a bass clef and a key signature of one sharp (F#). The notation includes various notes, rests, and accidentals. A circled '9' is at the end of the first staff, and a circled '10' is at the end of the second staff.

Handwritten musical notation for measures 11 and 12. The notation is written on two staves. The first staff has a treble clef and a key signature of one sharp (F#). The second staff has a bass clef and a key signature of one sharp (F#). The notation includes various notes, rests, and accidentals. A circled '10' is at the end of the first staff.

Handwritten musical notation for measures 13 and 14. The notation is written on two staves. The first staff has a treble clef and a key signature of one sharp (F#). The second staff has a bass clef and a key signature of one sharp (F#). The notation includes various notes, rests, and accidentals. A circled '10' is at the end of the first staff.

1963
A. Scherbaum

3TRUMP.
in C
Pauke



gr. rit

Fin
Teil 1.

Teil 2 (tacet)

Teil 3 (tacet)

umblättern →
Teil 4.

Teil 4.

Presto (auf 2)

Handwritten musical notation for the first system. The treble clef staff contains notes with handwritten markings: a circled 'a1' above the first measure, an accent (^) above the second measure, and 'a2' and 'a3' above the third and fourth measures respectively. The bass clef staff is mostly empty with some horizontal lines.

Handwritten musical notation for the second system. The treble clef staff has notes with sharp signs (#) and wavy lines. The bass clef staff has notes with a circled 'f' and a sharp sign (#) at the end. A circled '6' is written at the end of the system.

Handwritten musical notation for the third system. The treble clef staff has notes with a circled '7' and a '6' below it. The bass clef staff has notes with a '7' and a '6' below it. At the end, there is a circled '8' and the text '2. x D.C. ||: || dann weiter' with an arrow pointing right.

Handwritten musical notation for the fourth system. The treble clef staff has notes with flat signs (b) and vertical lines. The bass clef staff has notes with vertical lines.

Handwritten musical notation for the fifth system. The treble clef staff has notes with a circled '9', sharp signs (#), and a '7' below. The bass clef staff has notes with vertical lines.

Handwritten musical notation for the sixth system. The treble clef staff has notes with a circled '8' and a '7' below. The bass clef staff has notes with a circled '8' and a '7' below. At the end, there is a circled '8' and the text 'Fin 1963' and 'A. Scherbaum' with a signature.