

Sonate
für
große Orgel
1963

Notenheft

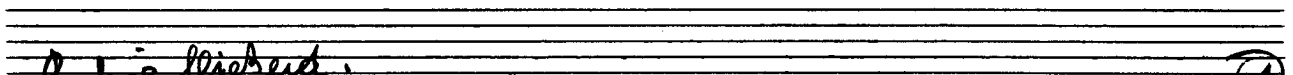
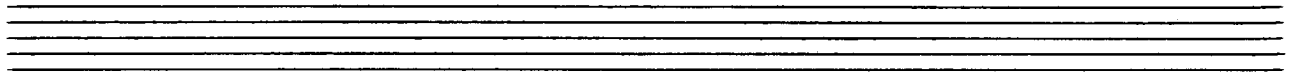
Edoardo Lehermann

Bitte Material schonen

Sonate für
große Orgel

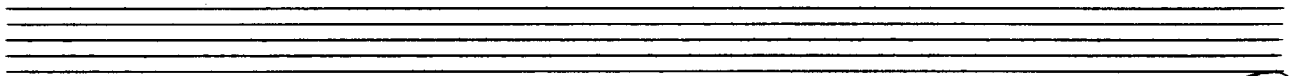
1963

Adolf Scherbaum

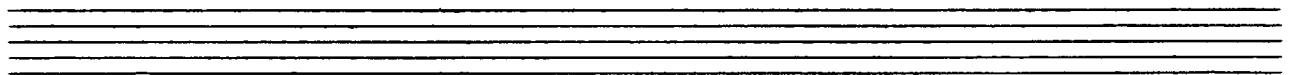


Ruhig fließend.

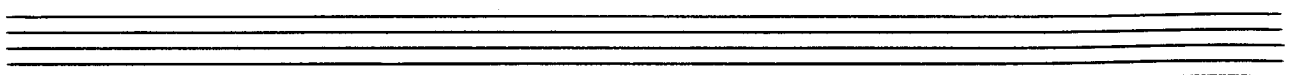
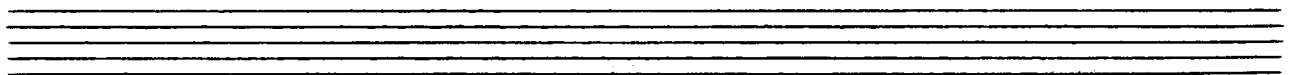
1

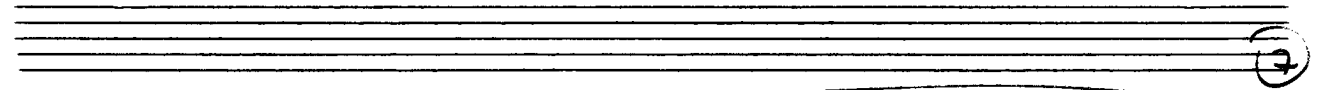
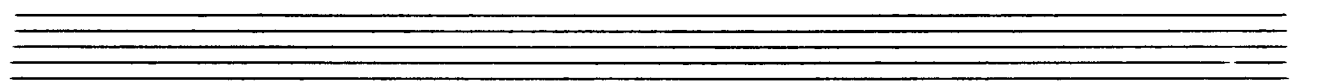
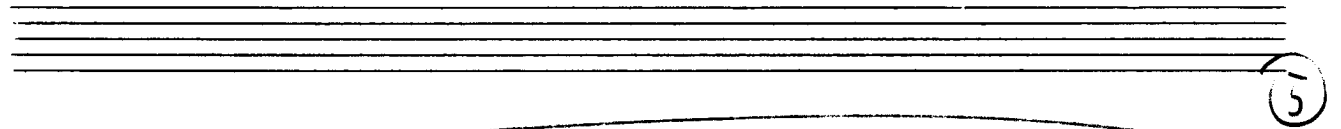
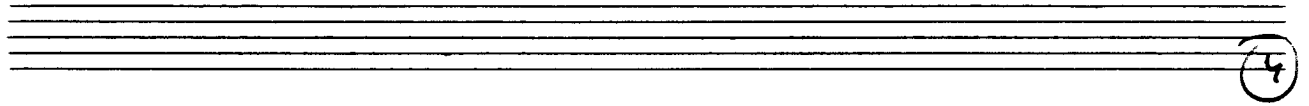


2



3





8

Handwritten musical notation for measures 8 and 9. Measure 8 shows a treble clef staff with a melodic line and a bass clef staff with a rhythmic accompaniment. Measure 9 continues the melodic line in the treble clef. A circled '8' is in the top right corner.

9

Handwritten musical notation for measures 9 and 10. Measure 9 shows a treble clef staff with a melodic line and a bass clef staff with a rhythmic accompaniment. Measure 10 continues the melodic line in the treble clef. A circled '9' is in the top right corner.

10

Handwritten musical notation for measures 10 and 11. Measure 10 shows a treble clef staff with a melodic line and a bass clef staff with a rhythmic accompaniment. Measure 11 continues the melodic line in the treble clef. A circled '10' is in the top right corner.

11

Handwritten musical notation for measures 11 and 12. Measure 11 shows a treble clef staff with a melodic line and a bass clef staff with a rhythmic accompaniment. Measure 12 continues the melodic line in the treble clef. A circled '11' is in the top right corner.

Handwritten musical notation for measures 12 and 13. Measure 12 features a treble clef staff with a melodic line and a bass clef staff with accompaniment. Measure 13 continues the melodic line with a triplet in the bass staff.

Handwritten musical notation for measures 14 and 15. Measure 14 shows a treble clef staff with a melodic line and a bass clef staff with accompaniment. Measure 15 continues the melodic line with a triplet in the bass staff.

Handwritten musical notation for measures 16 and 17. Measure 16 shows a treble clef staff with a melodic line and a bass clef staff with accompaniment. Measure 17 continues the melodic line with a triplet in the bass staff.

Handwritten musical notation for measures 18 and 19. Measure 18 shows a treble clef staff with a melodic line and a bass clef staff with accompaniment. Measure 19 continues the melodic line with a triplet in the bass staff.

Handwritten musical notation for measure 16, consisting of two staves. The number 16 is circled in the top right corner.

Handwritten musical notation for measure 16, showing a treble clef staff with a melodic line and a bass clef staff with a bass line. A slur covers the entire measure.

Handwritten musical notation for measure 17, consisting of two staves. The number 17 is circled in the top right corner.

Handwritten musical notation for measure 17, showing a treble clef staff with a melodic line and a bass clef staff with a bass line. A slur covers the entire measure.

Handwritten musical notation for measure 18, consisting of two staves. The number 18 is circled in the top right corner.

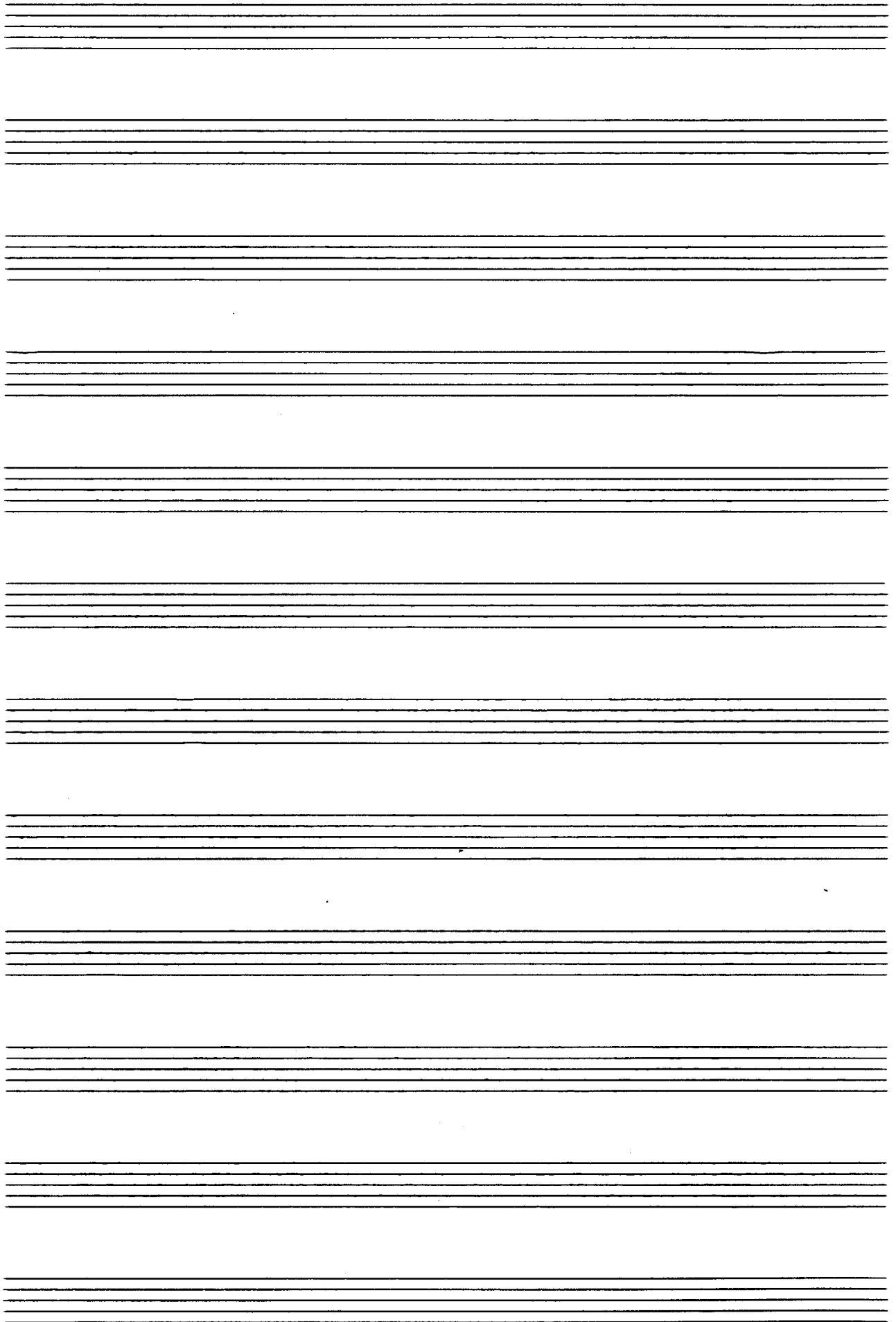
Handwritten musical notation for measure 18, showing a treble clef staff with a melodic line and a bass clef staff with a bass line. A slur covers the entire measure.

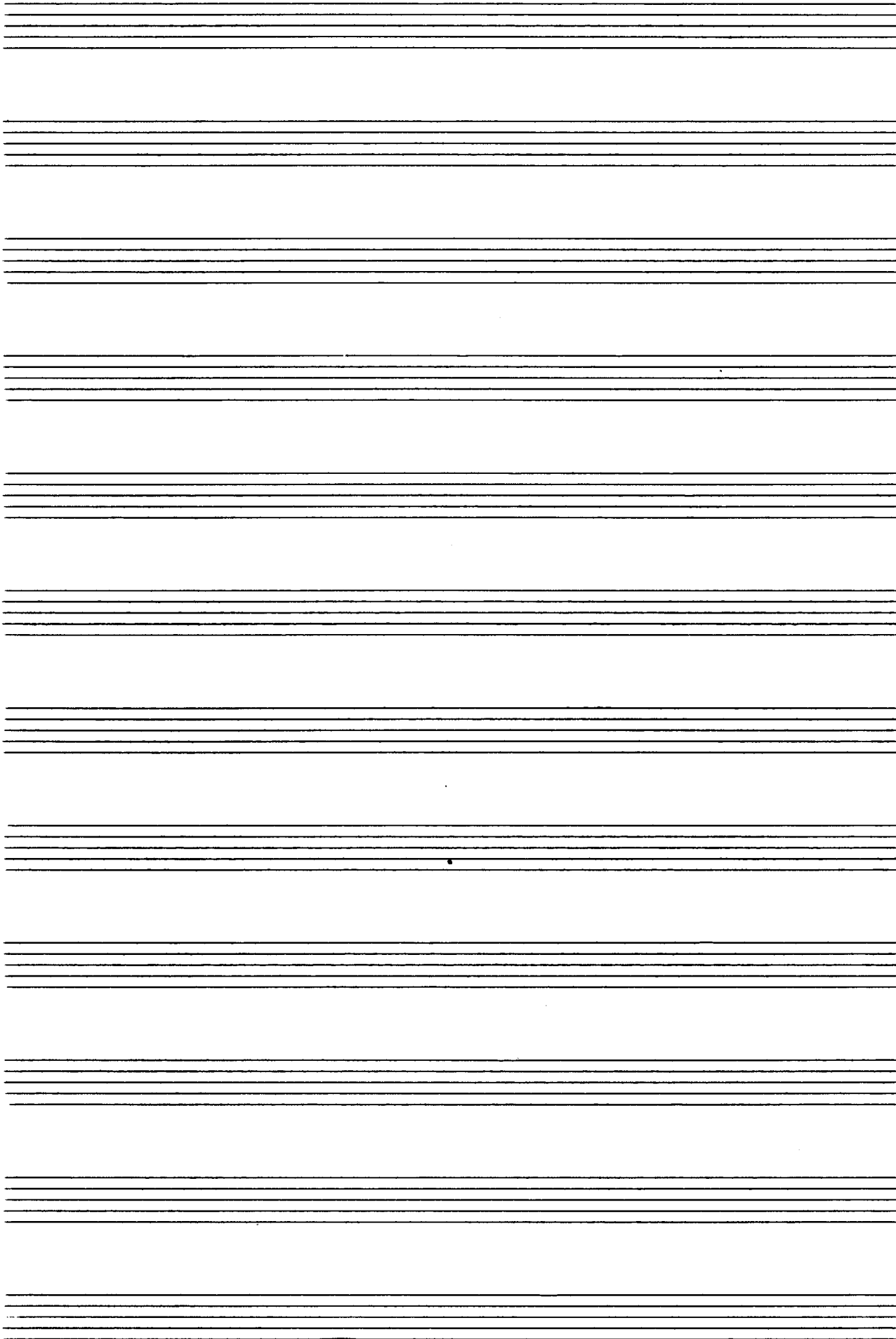
Handwritten musical notation for measure 19, consisting of two staves. The number 19 is circled in the top right corner.

Handwritten musical notation for measure 19, showing a treble clef staff with a melodic line and a bass clef staff with a bass line. A slur covers the entire measure.

20

21





Rasch (Presto)

①

Handwritten musical notation for the first system, measures 1-3. The music is in G major (one sharp) and 2/4 time. The treble clef part features a melodic line with eighth and sixteenth notes, including a triplet in measure 2. The bass clef part provides a harmonic accompaniment with chords and single notes.

②

Handwritten musical notation for the second system, measures 4-6. The treble clef part continues the melodic development with a triplet in measure 5. The bass clef part features a more active accompaniment with sixteenth-note patterns and chords.

③

Handwritten musical notation for the third system, measures 7-9. The treble clef part shows a change in melodic direction. The bass clef part has a more complex accompaniment with sixteenth-note runs and chords.

④

Handwritten musical notation for the fourth system, measures 10-12. The treble clef part features a melodic line with a triplet in measure 11. The bass clef part has a complex accompaniment with sixteenth-note patterns and chords.

5 6

7

8

9

10

Handwritten musical notation for measures 10-12. The top staff shows a melodic line with notes and accidentals. The bottom staff shows a bass line with chords and fingerings.

11

Handwritten musical notation for measures 11-13. The top staff shows a melodic line with notes and accidentals. The bottom staff shows a bass line with chords and fingerings.

Handwritten musical notation for measures 14-16. The top staff shows a melodic line with notes and accidentals. The bottom staff shows a bass line with chords and fingerings.

12

Handwritten musical notation for measures 17-19. The top staff shows a melodic line with notes and accidentals. The bottom staff shows a bass line with chords and fingerings.

pp

13

14

Handwritten musical score for measures 15 and 16. Measure 15 features a melodic line in the right hand with a slur over four measures and a bass line in the left hand. Measure 16 continues the melodic line with a more complex rhythmic pattern.

Handwritten musical score for measure 17. The right hand has a complex rhythmic pattern of eighth notes, and the left hand has a bass line with a 9th chord.

Handwritten musical score for measure 18. The right hand has a complex rhythmic pattern of eighth notes, and the left hand has a bass line with a 9th chord.

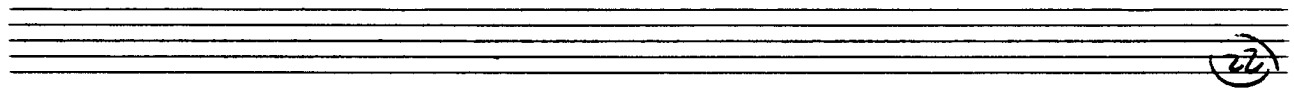
Handwritten musical score for measure 19. The right hand has a complex rhythmic pattern of eighth notes, and the left hand has a bass line with a 9th chord.

19

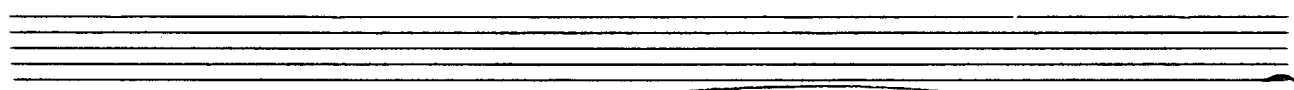
20

(7 Triller ad-lib.)

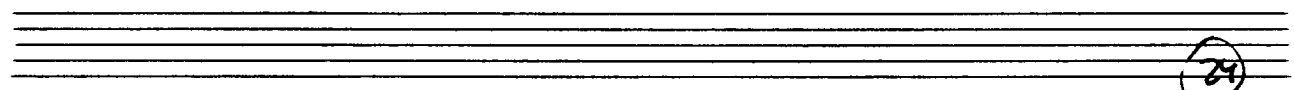
21



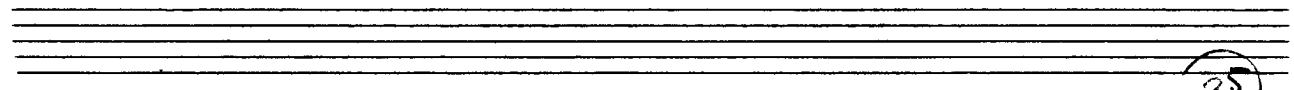
Musical notation for system 22, measures 1-2. The system consists of two staves. The upper staff is in treble clef and contains a melodic line with various accidentals (flats and sharps) and a fermata over the first measure. The lower staff is in bass clef and contains a bass line with chords and a fermata over the first measure. A large slur encompasses both staves across the two measures.



Musical notation for system 23, measures 1-2. The system consists of two staves. The upper staff is in treble clef and contains a melodic line with various accidentals and a fermata over the first measure. The lower staff is in bass clef and contains a bass line with chords and a fermata over the first measure. A large slur encompasses both staves across the two measures.



Musical notation for system 24, measures 1-2. The system consists of two staves. The upper staff is in treble clef and contains a melodic line with various accidentals and a fermata over the first measure. The lower staff is in bass clef and contains a bass line with chords and a fermata over the first measure. A large slur encompasses both staves across the two measures.



Musical notation for system 25, measures 1-2. The system consists of two staves. The upper staff is in treble clef and contains a melodic line with various accidentals and a fermata over the first measure. The lower staff is in bass clef and contains a bass line with chords and a fermata over the first measure. A large slur encompasses both staves across the two measures.

30

31

32

33

34

(dün)

35

36

2te ev. rit....

37

(Trillen ad. lib.)

Adagio

Handwritten musical notation for the first system. The top staff is in treble clef and the bottom staff is in bass clef. The music begins with a piano (*pp*) dynamic marking. The first staff contains a melodic line with eighth and sixteenth notes, while the second staff provides a harmonic accompaniment with sustained notes and some chromatic movement.

30

Handwritten musical notation for the second system. The top staff continues the melodic line with more complex rhythmic patterns, including triplets and sixteenth notes. The bottom staff features a bass line with a prominent chromatic descent and a sharp sign, indicating a change in key signature.

Handwritten musical notation for the third system. The top staff shows a melodic line with a key signature change to two sharps (D major). The bottom staff continues the accompaniment with sustained notes and a chromatic line.

Handwritten musical notation for the fourth system. The top staff features a melodic line with a large slur covering several measures. The bottom staff has a bass line with a similar slur and an arrow pointing to a specific note, possibly indicating a performance instruction or a specific harmonic point.

39

40

41

fast attacca →

Volles Werk (sehr breit)

42

lange ?

gr. rit.....

FIN

Lina 1963
 Adolf Scherbaum