

Orgelfantasie

über ein Motiv von

(Arcangelo Corelli)

1964 v. Adolf Scherbaum

Andante

3

4

5

6

Handwritten musical notation for the first system, measures 1-2. The right hand has a melodic line with a circled 'p' dynamic marking. The left hand has a bass line with a circled 'p' dynamic marking. Both hands feature slurs and ties.

Handwritten musical notation for the second system, measures 3-4. The right hand has a melodic line with a circled '7' measure number. The left hand has a bass line with a circled '7' measure number. Both hands feature slurs and ties.

Handwritten musical notation for the third system, measures 5-6. The right hand has a melodic line with a circled '8' measure number. The left hand has a bass line with a circled '8' measure number. Both hands feature slurs and ties.

Handwritten musical notation for the fourth system, measures 7-8. The right hand has a melodic line with a circled '9' measure number. The left hand has a bass line with a circled '9' measure number. Both hands feature slurs and ties.

Handwritten musical notation for the first system. The treble staff contains a melodic line with a triplet of eighth notes and a slur over the following notes. The bass staff contains a single note with a long, sweeping slur extending across the measure.

Handwritten musical notation for the second system. The treble staff continues the melodic line with a slur. The bass staff features a long note with a fermata symbol above it.

Handwritten musical notation for the third system. A circled number "10" is written in the upper right corner. The treble staff has a melodic line with a flat sign. The bass staff has a long note with a fermata symbol above it.

Handwritten musical notation for the fourth system. The treble staff has a melodic line with a sharp sign. The bass staff has a long note with a sharp sign above it.

Handwritten musical notation for the first system, measures 1-2. The system consists of two staves. The upper staff is in treble clef and the lower staff is in bass clef. Both staves are connected by a large blue slur. Measure 1 contains a whole note chord in the upper staff and a half note chord in the lower staff. Measure 2 contains a half note chord in the upper staff and a half note chord in the lower staff.

Handwritten musical notation for the second system, measures 3-4. The system consists of two staves. The upper staff is in treble clef and the lower staff is in bass clef. Both staves are connected by a large blue slur. Measure 3 contains a half note chord in the upper staff and a half note chord in the lower staff. Measure 4 contains a half note chord in the upper staff and a half note chord in the lower staff. A circled number '11' is written at the end of the system.

Handwritten musical notation for the third system, measures 5-6. The system consists of two staves. The upper staff is in treble clef and the lower staff is in bass clef. Both staves are connected by a large blue slur. Measure 5 contains a half note chord in the upper staff and a half note chord in the lower staff. Measure 6 contains a half note chord in the upper staff and a half note chord in the lower staff.

Handwritten musical notation for the fourth system, measures 7-8. The system consists of two staves. The upper staff is in treble clef and the lower staff is in bass clef. Both staves are connected by a large blue slur. Measure 7 contains a half note chord in the upper staff and a half note chord in the lower staff. Measure 8 contains a half note chord in the upper staff and a half note chord in the lower staff. A circled number '12' is written at the end of the system.

Handwritten musical notation for the first system. The treble clef staff contains a half note with a flat, followed by a quarter note with a flat, and a quarter note with a flat. The bass clef staff contains a whole rest, followed by a triplet of eighth notes: G4 (flat), F4 (flat), and E4 (flat).

Handwritten musical notation for the second system. The treble clef staff contains a half note with a flat, followed by a quarter note with a flat, and a quarter note with a flat. The bass clef staff contains a whole rest, followed by a triplet of eighth notes: G4 (flat), F4 (flat), and E4 (flat).

Handwritten musical notation for the third system. The treble clef staff contains a half note with a flat, followed by a quarter note with a flat, and a quarter note with a flat. The bass clef staff contains a whole rest, followed by a triplet of eighth notes: G4 (flat), F4 (flat), and E4 (flat).

Handwritten musical notation for the fourth system. The treble clef staff contains a half note with a flat, followed by a quarter note with a flat, and a quarter note with a flat. The bass clef staff contains a whole rest, followed by a triplet of eighth notes: G4 (flat), F4 (flat), and E4 (flat). The system concludes with a double bar line and a circled number 13.

Handwritten musical notation for the first system. It consists of two staves: a treble clef staff on top and a bass clef staff on the bottom. A circled 'P' (piano) dynamic marking is present in the treble staff. The right hand part is written with a large blue slur encompassing four measures of sixteenth-note runs. The left hand part has a few notes, including a half note in the first measure and a quarter note in the fourth measure.

Handwritten musical notation for the second system. It consists of two staves: a treble clef staff on top and a bass clef staff on the bottom. The right hand part is written with a large blue slur encompassing four measures. The first measure contains a sixteenth-note run, followed by two measures with scribbled-out notes, and the fourth measure contains another sixteenth-note run. The left hand part has a few notes, including a half note in the first measure and a quarter note in the fourth measure.

Handwritten musical notation for the third system. It consists of two staves: a treble clef staff on top and a bass clef staff on the bottom. The right hand part is written with a large blue slur encompassing four measures. The first measure contains a sixteenth-note run, followed by two measures with scribbled-out notes, and the fourth measure contains another sixteenth-note run. The left hand part has a few notes, including a half note in the first measure and a quarter note in the fourth measure.

Handwritten musical notation for the first system. It consists of a treble staff and a bass staff. A large blue bracket spans across both staves. The treble staff contains a series of notes with stems, and the bass staff contains a few notes. There are two instances of the number '110' written above the treble staff, indicating fingering. The notation is in blue ink on a five-line staff.

Handwritten musical notation for the second system. It consists of a treble staff and a bass staff. A large blue bracket spans across both staves. The treble staff contains a series of notes with stems, and the bass staff contains a few notes. There is one instance of the number '110' written above the treble staff, indicating fingering. The notation is in blue ink on a five-line staff.

Handwritten musical notation for the third system. It consists of a treble staff and a bass staff. A large blue bracket spans across both staves. The treble staff contains a series of notes with stems, and the bass staff contains a few notes. There are two instances of the number '110' written above the treble staff, indicating fingering. A circled number '14' is written in the upper right corner of the system. The notation is in blue ink on a five-line staff.

breit

Handwritten musical score for measures 13-15. The notation includes notes on three staves (treble, middle, and bass clefs) with various markings such as 'breit', 'tt', and circled measure numbers (15).

Handwritten musical score for measures 16-18. The notation includes notes on three staves (treble, middle, and bass clefs) with various markings such as circled measure numbers (16).

Handwritten musical notation for measures 15 and 16. The system includes two staves. The left staff contains the text "(frei) (erregt)" and a circled number "15". The right staff contains a melodic line with a long slur and a circled number "16".

Handwritten musical notation for measures 17 and 18. The system includes two staves. The left staff contains a circled number "17". The right staff contains a melodic line with a long slur and a circled number "18".

Handwritten musical notation for measures 19 and 20. The system includes two staves. The left staff contains a circled number "19". The right staff contains a melodic line with a long slur and a circled number "20".

breit

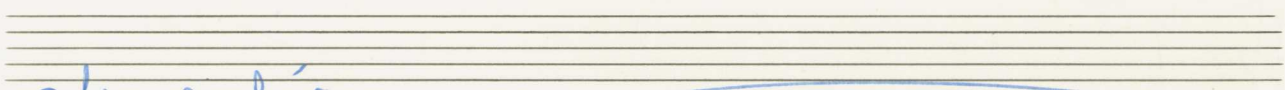
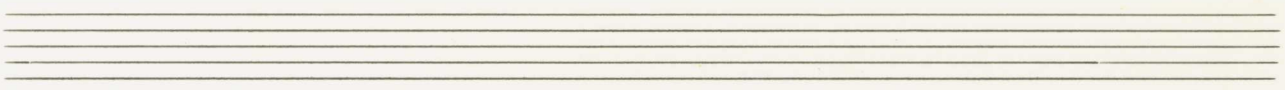
Handwritten musical score for the first system. It consists of three staves. The top staff has a treble clef and a common time signature. The middle staff has a bass clef and a common time signature. The bottom staff has a common time signature. The notation includes various notes, rests, and dynamic markings. There are two sets of chords in the upper staves, one in the beginning and one later. The bottom staff contains a melodic line with several notes and rests, some with accents (^).

Handwritten musical score for the second system. It consists of three staves. The top staff has a treble clef and a common time signature. The middle staff has a bass clef and a common time signature. The bottom staff has a common time signature. The notation includes various notes, rests, and dynamic markings. There are two sets of chords in the upper staves, one in the beginning and one later. The bottom staff contains a melodic line with several notes and rests, some with accents (^). A circled number '19' is written above the second set of chords.

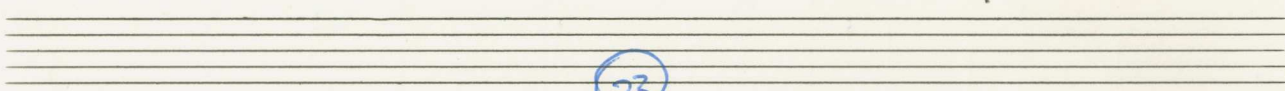
Handwritten musical notation for measures 20. The system consists of three staves. The top staff is in treble clef with a key signature of two flats (B-flat and E-flat). The middle and bottom staves are in bass clef with a key signature of three flats (B-flat, E-flat, and A-flat). Measure 20 is circled. The notation includes chords in the upper staves and a melodic line in the lower staff.

Handwritten musical notation for measures 21. The system consists of three staves with the same clefs and key signature as the previous system. Measure 21 is circled. The notation continues with chords and a melodic line.

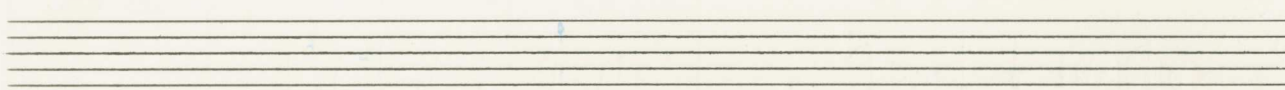
Handwritten musical notation for measures 22. The system consists of three staves with the same clefs and key signature. The first two staves contain the handwritten text: *(frei)* *(rit)* and *accel + rit*. Measure 22 is circled. The bottom staff contains a melodic line.



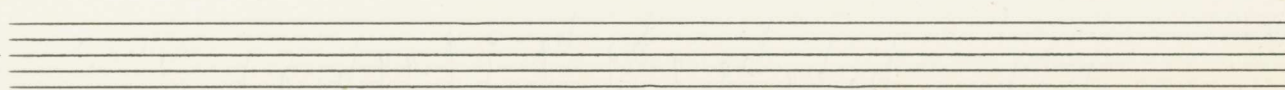
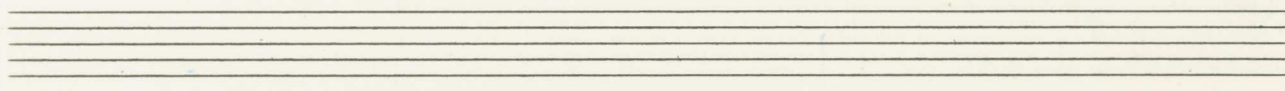
22 sehr ruhig



23



23



24

25

Handwritten musical notation for the first system, featuring a treble and bass clef with a key signature of one sharp (F#) and a common time signature. The music consists of two measures with various note values and rests, all under a large blue slur.

Handwritten musical notation for the second system, continuing the piece with two measures of music in treble and bass clefs, under a large blue slur.

Handwritten musical notation for the third system, including a circled "26" in the right margin. The system contains two measures of music in treble and bass clefs, under a large blue slur.

Handwritten musical notation for the fourth system, featuring two measures of music in treble and bass clefs, under a large blue slur.

27

28

29

30

frei

30

Cluster

ppp

(sehr ruhig)

31

(frei) →

ppp

32

breit

33

breit

33

34

breit

35

breit

36

breit (accel) →

37

Presto *erregt* (auf 1 Schlag)

38

39

40

41

Handwritten musical score for measures 42-43. The system consists of two staves. The upper staff contains a melodic line with notes and slurs, and the lower staff contains a bass line with notes and slurs. Measure 42 is circled in the right margin.

Handwritten musical score for measures 43-44. The system consists of two staves. The upper staff contains a melodic line with notes and slurs, and the lower staff contains a bass line with notes and slurs. Measure 43 is circled in the right margin.

Handwritten musical score for measures 44-45. The system consists of two staves. The upper staff contains a melodic line with notes and slurs, and the lower staff contains a bass line with notes and slurs. Measure 44 is circled in the right margin.

45

Handwritten musical notation for measure 45. The system consists of two staves. The upper staff contains a series of notes with slurs and some handwritten annotations like 'b' and '3/3'. The lower staff has a whole rest followed by notes with slurs and annotations like '3/3' and '3/3'.

46

Handwritten musical notation for measure 46. The system consists of two staves. The upper staff contains notes with slurs and annotations like 'b' and '3/3'. The lower staff has a whole rest followed by notes with slurs and annotations like '3/3' and '3/3'.

47

Handwritten musical notation for measure 47. The system consists of two staves. The upper staff contains notes with slurs and annotations like '3/3' and '3/3'. The lower staff has a whole rest followed by notes with slurs and annotations like '3/3' and '3/3'.

48

Handwritten musical notation for measure 48. The system consists of two staves. The upper staff contains notes with slurs and annotations like '3/3' and '3/3'. The lower staff has a whole rest followed by notes with slurs and annotations like '3/3', '3/3', and '#'. The system ends with a double bar line and a fermata.

(auf 3 Schläge)

49

50

51

52

Handwritten musical score for measure 52. The notation includes a treble clef staff with a melodic line, a bass clef staff with a bass line, and a grand staff with a complex chordal accompaniment. The notation includes various accidentals and slurs.

53

Handwritten musical score for measure 53. The notation includes a treble clef staff with a melodic line, a bass clef staff with a bass line, and a grand staff with a complex chordal accompaniment. The notation includes various accidentals and slurs.

54

Handwritten musical score for measure 54. The notation includes a treble clef staff with a melodic line, a bass clef staff with a bass line, and a grand staff with a complex chordal accompaniment. The notation includes various accidentals and slurs.

Handwritten musical score for three staves. The top staff has a treble clef and contains notes with various ornaments and slurs. The middle staff has a bass clef and contains notes with slurs. The bottom staff has a bass clef and contains notes with slurs. There are circled numbers '54' and '55' on the right side.

Handwritten musical score for three staves. The top staff has a treble clef and contains a series of notes with slurs. The middle staff has a bass clef and contains notes with slurs. The bottom staff has a bass clef and contains notes with slurs. A circled "auf 4" is written above the first staff.

Handwritten musical score for three staves. The top staff has a treble clef and contains a series of notes with slurs. The middle staff has a bass clef and contains notes with slurs. The bottom staff has a bass clef and contains notes with slurs.

Handwritten musical score for the first system. It consists of three staves. The top staff is a treble clef with a melodic line starting on a B-flat, followed by a series of eighth notes and a fermata. The middle staff is a treble clef with a similar melodic line. The bottom staff is a grand staff with a bass clef, showing a few notes and a fermata. The system is enclosed in a large blue bracket.

Handwritten musical score for the second system. It consists of three staves. The top staff is a treble clef with a melodic line starting on a B-flat, followed by a series of eighth notes and a fermata. The middle staff is a bass clef with a similar melodic line. The bottom staff is a grand staff with a bass clef, showing a few notes and a fermata. The system is enclosed in a large blue bracket.

(poco rit)

Handwritten musical score for the third system. It consists of three staves. The top staff is a treble clef with a series of chords. The middle staff is a bass clef with a series of chords. The bottom staff is a grand staff with a bass clef, showing a few notes and a fermata. The system is enclosed in a large blue bracket.

56

Maestoso (voll Werk)

Handwritten musical score for the first system of 'Maestoso (voll Werk)'. It features three staves: a treble clef staff, a bass clef staff, and a common time bass clef staff. The treble and bass clef staves contain complex chordal textures with many overlapping notes and slurs. The common time staff contains a rhythmic accompaniment with quarter and eighth notes. A 4/4 time signature is written in the bass clef staff.

Handwritten musical score for the second system of 'Maestoso (voll Werk)'. It features three staves: a treble clef staff, a bass clef staff, and a common time bass clef staff. The treble and bass clef staves contain complex chordal textures with many overlapping notes and slurs. The common time staff contains a rhythmic accompaniment with quarter and eighth notes.

sehr breit!

Handwritten musical score for the first system. It features a treble clef, a piano (p) dynamic marking, and a key signature of one sharp (F#). The score includes a grand staff with treble and bass clefs, and a single treble clef staff. The music is characterized by wide intervals and a slow, spacious feel.

Handwritten musical score for the second system. It features a treble clef, a piano (p) dynamic marking, and a key signature of one flat (Bb). The score includes a grand staff with treble and bass clefs, and a single treble clef staff. The music is characterized by wide intervals and a slow, spacious feel.

Handwritten musical score for the third system. It features a treble clef, a piano (p) dynamic marking, and a key signature of one sharp (F#). The score includes a grand staff with treble and bass clefs, and a single treble clef staff. The music is characterized by wide intervals and a slow, spacious feel.

Handwritten musical notation on a page of ten staves. The notation includes a treble clef, a key signature of two sharps (F# and C#), and a time signature of 3/4. The notes are mostly whole notes. The word "lange halten" is written in blue ink next to the notes. There are also some scribbles and a large blue loop on the right side of the page.

1964
Adolf Scherbaum