

2 Flöten (Picc)

Tempo

Handwritten musical score for two flutes (piccolo). The score consists of three staves. The first staff has a treble clef, a key signature of one flat (B-flat), and a common time signature. It contains several measures of music with notes, rests, and dynamic markings like 'rit...'. The second and third staves have bass clefs and contain more musical notation, including slurs and dynamic markings.

Handwritten musical score for two flutes (piccolo). This section consists of four staves. The first staff has a treble clef and a key signature of one flat. It starts with a circled '2' and the text 'Fl. + Picc.'. The music features a series of notes with stems, some with slurs. The fourth staff ends with 'D.C.' (Da Capo).

Handwritten musical score for two flutes (piccolo). This section consists of two staves. The first staff has a treble clef and a key signature of one flat. The second staff has a bass clef and contains musical notation with slurs and dynamic markings.

Handwritten musical score for two flutes (piccolo). This section consists of two staves. The first staff has a treble clef and a key signature of one flat. It contains musical notation with slurs and dynamic markings. The second staff has a bass clef and contains musical notation, including a box labeled 'FIN!'.

203.

The image shows a handwritten musical score for strings, consisting of seven systems of staves. The notation includes various rhythmic values, slurs, and performance markings. The first system features a melodic line with a 'rit.' marking and a 'Tempo' marking. The second system shows a rhythmic accompaniment with a 'f' dynamic marking. The third system includes a 'D.C.' marking. The fourth system has a 'rit.' marking. The fifth system features a 'rit.' marking. The sixth system has a 'rit.' marking. The seventh system has a 'rit.' marking. The score is written in a single system of staves, with each system containing two staves.

2 Klar. in C

Handwritten musical notation for the first system, featuring a treble clef, a key signature of one flat (B-flat), and a common time signature (C). The notation includes a series of notes with slurs and accents, and the word "rit..." is written below the staff. The word "Tempo" is written above the staff.

Handwritten musical notation for the second system, consisting of three staves. The notation includes various note values, slurs, and dynamic markings such as "f" (forte) and "p" (piano).

Handwritten musical notation for the third system, consisting of six staves. The notation includes complex rhythmic patterns, slurs, and dynamic markings such as "p" (piano) and "D.C." (Da Capo).

Handwritten musical notation for the fourth system, featuring a treble clef, a key signature of one flat (B-flat), and a common time signature (C). The notation includes notes with slurs and accents, and the word "rit..." is written below the staff. The system concludes with a double bar line and the word "FIN." written to the right.

rit...

2 Flöte

Handwritten musical notation on a single staff. It begins with a treble clef, a key signature of one flat (B-flat), and a common time signature (C). The notation includes several measures of music with notes and rests. A sharp sign (#) is written below the first measure. The word "rit..." is written below the second measure. A circled C with a downward-pointing arrow is written above the third measure. The word "Tempo" is written above the fourth measure. The staff ends with a double bar line.

Handwritten musical notation on two staves. The top staff starts with a treble clef, a key signature of one flat, and a common time signature. It contains several measures of music with notes and rests. The bottom staff continues the notation with notes and rests.

Handwritten musical notation on two staves. The top staff starts with a treble clef, a key signature of one flat, and a common time signature. It contains several measures of music with notes and rests. The bottom staff continues the notation with notes and rests.

Handwritten musical notation on two staves. The top staff starts with a treble clef, a key signature of one flat, and a common time signature. It contains several measures of music with notes and rests. The bottom staff continues the notation with notes and rests.

Handwritten musical notation on two staves. The top staff starts with a treble clef, a key signature of one flat, and a common time signature. It contains several measures of music with notes and rests. The bottom staff continues the notation with notes and rests. The notation ends with a double bar line and a decorative flourish.

Handwritten musical notation on two staves. The top staff starts with a treble clef, a key signature of one flat, and a common time signature. It contains several measures of music with notes and rests. The bottom staff continues the notation with notes and rests. The notation ends with a double bar line and the word "FIN." written below.

Handwritten musical notation on two staves. The top staff starts with a treble clef, a key signature of one flat, and a common time signature. It contains several measures of music with notes and rests. The bottom staff continues the notation with notes and rests.

3 Hörn. in C

Tempo

rit...

93

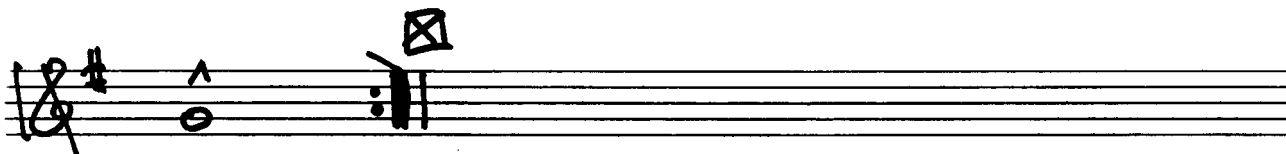
92

rit...

TRUMP. I in B

Passante (Presto)

Presto (Tempo)



gr. rit. ....

Tromp. II in B

pesante (Presto)

Tempo (Presto)

TRUMP. III. inbe

perante (Presto)

Tempo (Presto)

Musical staff with rhythmic notation, including accents and first/second endings.

Musical staff with eighth-note patterns and a forte dynamic marking.

Musical staff with eighth-note patterns and slurs.

Musical staff with eighth-note patterns and slurs.

Musical staff with eighth-note patterns and a fermata.

Musical staff with quarter notes and a forte dynamic marking.

Musical staff with eighth-note patterns and slurs.

Musical staff with quarter notes and a D.C. marking.

Musical staff with quarter notes and slurs.

Empty musical staff.

Musical staff with eighth-note patterns, a fermata, and the word 'FIN.'.

er. rit....



112 Violinen

Tempo

1

2

gr. rit. ....

fin

D.C.

gr. rit. ....

FIN.

Bratschen

Tempo

Handwritten musical notation for the first system, featuring a treble clef, a key signature of two flats (B-flat and E-flat), and a common time signature. The notation includes quarter notes, eighth notes, and rests. A dynamic marking of *ff* is present. The word "rit..." is written below the staff.

Handwritten musical notation for the second system, consisting of two staves. The top staff features a treble clef, a key signature of two flats, and a common time signature, with notes beamed together. The bottom staff features a bass clef, a key signature of two flats, and a common time signature, with notes beamed together. A circled plus sign (+) is written above the first measure of the top staff.

Handwritten musical notation for the third system, consisting of two staves. The top staff features a treble clef, a key signature of two flats, and a common time signature, with notes beamed together. The bottom staff features a bass clef, a key signature of two flats, and a common time signature, with notes beamed together. A circled plus sign (+) is written above the first measure of the top staff.

Handwritten musical notation for the fourth system, consisting of three staves. The top staff features a treble clef, a key signature of two flats, and a common time signature, with notes beamed together. The middle staff features a treble clef, a key signature of two flats, and a common time signature, with notes beamed together. The bottom staff features a bass clef, a key signature of two flats, and a common time signature, with notes beamed together. A circled plus sign (+) is written above the first measure of the top staff.

Handwritten musical notation for the fifth system, consisting of two staves. The top staff features a treble clef, a key signature of two flats, and a common time signature, with notes beamed together. The bottom staff features a bass clef, a key signature of two flats, and a common time signature, with notes beamed together. A circled plus sign (+) is written above the first measure of the top staff. The word "FIN" is written at the end of the system.

C+B.

Tempo

Handwritten musical notation for the first system, consisting of two staves labeled C and B. The music is in 2/4 time with a key signature of two flats. The C staff contains a melodic line with notes and rests, and the B staff contains a rhythmic accompaniment. The word "primit..." is written between the staves. Above the C staff, there are handwritten notes "C" and "C" with a checkmark. Below the B staff, there is a handwritten note "pizz".

Handwritten musical notation for the second system, consisting of two staves. The C staff has a melodic line with notes and rests, and the B staff has a rhythmic accompaniment.

Handwritten musical notation for the third system, consisting of two staves. The C staff has a melodic line with notes and rests, and the B staff has a rhythmic accompaniment.

Handwritten musical notation for the fourth system, consisting of two staves. The C staff has a melodic line with notes and rests, and the B staff has a rhythmic accompaniment. There are some markings on the C staff, including a square and a circle.

Handwritten musical notation for the fifth system, consisting of one staff. The music is in 2/4 time with a key signature of two flats. It starts with a circled "2" and contains a melodic line with notes and rests.

Handwritten musical notation for the sixth system, consisting of one staff. The music is in 2/4 time with a key signature of two flats. It contains a melodic line with notes and rests, ending with "D.C." and a double bar line.

Handwritten musical notation for the seventh system, consisting of one staff. The music is in 2/4 time with a key signature of two flats. It contains a melodic line with notes and rests.

Handwritten musical notation for the eighth system, consisting of one staff. The music is in 2/4 time with a key signature of two flats. It contains a melodic line with notes and rests, ending with a double bar line.

Handwritten musical notation for the ninth system, consisting of one staff. The music is in 2/4 time with a key signature of two flats. It contains a melodic line with notes and rests, ending with "FIN." and a double bar line. There is a circled "2" and the word "primit..." written below the staff.

Schlagzeug

Tempo

f

pr. rit...

pr. rit....