

2 Flöten (Picc)

Handwritten musical score for two flutes in piccolo. The first system consists of three staves. The top staff is in treble clef with a key signature of two flats (Bb, Eb) and a common time signature (C). It contains several notes with slurs and a dynamic marking of *rit...*. The middle and bottom staves are in bass clef with the same key signature and time signature, containing chords and melodic lines. A *Tempo* marking is present at the top right of the system.

Handwritten musical score for two flutes in piccolo, second system. It consists of four staves. The top staff is in treble clef with a key signature of two flats (Bb, Eb) and a common time signature (C). It features a circled 'a2' and the marking 'Fl. + Picc.'. The bottom three staves are in bass clef with the same key signature and time signature. The system concludes with a *D.C.* (Da Capo) marking.

Handwritten musical score for two flutes in piccolo, third system. It consists of two staves. The top staff is in treble clef with a key signature of two flats (Bb, Eb) and a common time signature (C). The bottom staff is in bass clef with the same key signature and time signature. The system ends with a double bar line and a flourish.

Handwritten musical score for two flutes in piccolo, fourth system. It consists of two staves. The top staff is in treble clef with a key signature of two flats (Bb, Eb) and a common time signature (C). The bottom staff is in bass clef with the same key signature and time signature. The system concludes with a *Collo* marking and a *FIN!* marking.

203.

Handwritten musical notation on a single staff. It begins with a treble clef, a key signature of two flats (B-flat and E-flat), and a common time signature (C). The notation includes various rhythmic values, including eighth and sixteenth notes, and rests. A dynamic marking of *rit.* is present. The piece concludes with a double bar line and a fermata over the final note.

Handwritten musical notation on two staves. The top staff starts with a treble clef, a key signature of two flats, and a common time signature. The bottom staff starts with a bass clef, a key signature of two flats, and a common time signature. The notation consists of chords and rhythmic patterns. The piece ends with a double bar line and a fermata.

Handwritten musical notation on two staves. The top staff starts with a treble clef, a key signature of two flats, and a common time signature. The bottom staff starts with a bass clef, a key signature of two flats, and a common time signature. The notation includes chords and rhythmic patterns. The piece concludes with a double bar line and the marking *D.C.*

Handwritten musical notation on a single staff. It begins with a treble clef, a key signature of two flats, and a common time signature. The notation includes chords and rhythmic patterns. The piece ends with a double bar line and a fermata.

Handwritten musical notation on a single staff. It begins with a treble clef, a key signature of two flats, and a common time signature. The notation includes chords and rhythmic patterns. The piece concludes with a double bar line, a fermata, and the marking *FIN*. A handwritten note *rit.* is written below the staff.

2 Klar. in C

Handwritten musical notation on a single staff. It begins with a treble clef, a key signature of one flat (B-flat), and a common time signature (C). The notation includes several notes with accents and dynamic markings. The word "Tempo" is written above the staff. The word "rit..." is written below the staff.

Handwritten musical notation on three staves. The top staff starts with a treble clef, a key signature of one flat, and a common time signature. It features notes with accents and dynamic markings. The middle and bottom staves continue the musical line with various note values and rests.

Handwritten musical notation on five staves. The top staff begins with a treble clef, a key signature of two flats (B-flat and E-flat), and a common time signature. It contains notes with accents and dynamic markings. The word "D.C." is written on the third staff. The notation continues across five staves with various rhythmic patterns and note values.

Handwritten musical notation on a single staff. It starts with a treble clef, a key signature of one flat, and a common time signature. The notation includes notes with accents and dynamic markings. The word "FIN." is written at the end of the staff.

2 Flöte

Handwritten musical notation on a single staff. It begins with a treble clef, a key signature of one flat (B-flat), and a common time signature (C). The notation includes several measures of music with notes and rests. A dynamic marking 'ff' is present. A tempo marking 'Tempo' is written above the staff. The word 'rit...' is written below the staff. The piece concludes with a double bar line.

Handwritten musical notation on two staves. The top staff starts with a treble clef, a key signature of one flat, and a common time signature. It contains several measures of music with notes and rests. The bottom staff continues the musical line with notes and rests.

Handwritten musical notation on four staves. The top staff begins with a treble clef, a key signature of one flat, and a common time signature. It features a dynamic marking 'ff' and a tempo marking 'Tempo'. The notation includes various musical symbols such as slurs, ties, and accents. The word 'D.C.' is written at the end of the section. The bottom staff concludes with a double bar line and a decorative flourish.

Handwritten musical notation on a single staff. It starts with a treble clef, a key signature of one flat, and a common time signature. The notation includes notes and rests. A dynamic marking 'ff' is present. The word 'rit...' is written below the staff. The piece ends with a double bar line and the word 'FIN.' written to the right.

3 Hörn. in C

Handwritten musical notation for the first horn part. It begins with a treble clef, a key signature of one flat (B-flat), and a common time signature (C). The notation includes several measures of music with notes and rests. A circled number '77' is written below the first measure. The word 'rit...' is written below the second measure. A 'Tempo' marking is written above the staff towards the right. The piece concludes with a double bar line and a repeat sign.

Handwritten musical notation for the second horn part. It starts with a treble clef, a key signature of one flat, and a common time signature. A circled number '93' is written above the first measure. The notation features a series of notes with stems, some beamed together, and rests. The piece ends with a double bar line.

Handwritten musical notation for the third horn part. It begins with a treble clef, a key signature of one flat, and a common time signature. The notation consists of several measures of music with notes and rests. The piece concludes with a double bar line and a square box containing an 'X'.

Handwritten musical notation for the first horn part of the second system. It starts with a treble clef, a key signature of two flats (B-flat and E-flat), and a common time signature. A circled number '92' is written above the first measure. The notation includes notes and rests.

Handwritten musical notation for the second horn part of the second system. It begins with a treble clef, a key signature of two flats, and a common time signature. The notation features notes and rests, with the marking 'D.C.' (Da Capo) written below the staff. A circled number '4' is written above the final measure.

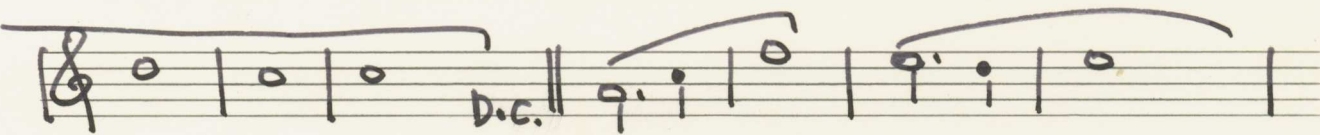
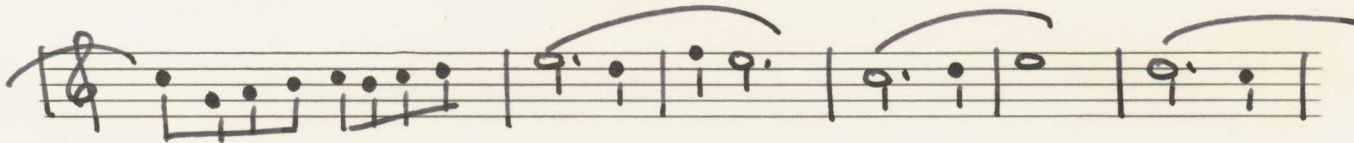
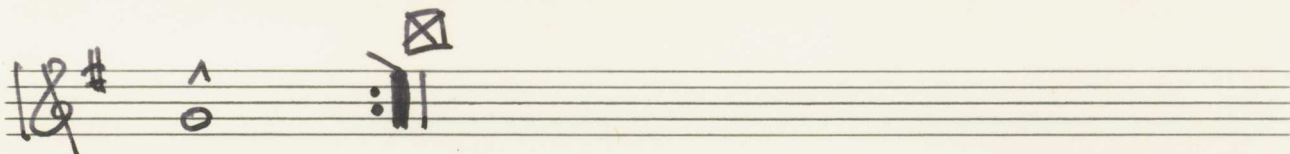
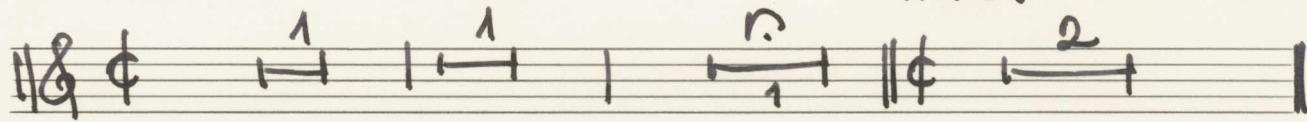
Handwritten musical notation for the third horn part of the second system. It starts with a treble clef, a key signature of two flats, and a common time signature. A circled number '92' is written above the first measure. The notation includes notes and rests, ending with a double bar line and a repeat sign.

Handwritten musical notation for the first horn part of the third system. It begins with a treble clef, a key signature of one flat, and a common time signature. The notation includes notes and rests. A circled number '77' is written below the first measure. The word 'rit...' is written below the second measure. The piece concludes with a double bar line and the word 'FIN.' written in a box.

Tromp. I in B

Pesante (Presto)

Presto (Tempo)



TROMP. II in B

pesante (Presto)

Tempo (Presto)

Handwritten musical score for Trompe II in B, measures 1-10. The score is in treble clef with a key signature of one sharp (F#). It begins with a common time signature. The first two measures are marked 'pesante (Presto)' and contain rhythmic patterns with first and second endings. The following six measures are marked 'Tempo (Presto)' and feature a melodic line with slurs and accents. Measure 10 ends with a boxed 'X' symbol.

Handwritten musical score for Trompe II in B, measures 11-12. The score is in treble clef with a key signature of two sharps (F# and C#). It begins with a boxed 'X' symbol. The music concludes with a double bar line and the word 'FIN.' written below the staff.

gr. rit...

Tromp. III. inbe

pesante (Presto)

Tempo (Presto)

Handwritten musical score for Tromp. III. inbe, measures 1-10. The score is in 2/4 time with a key signature of one sharp (F#). It features various rhythmic patterns including eighth and sixteenth notes, rests, and dynamic markings like 'f' and 'D.C.'.

Handwritten musical score for Tromp. III. inbe, measures 11-12. Measure 11 starts with a boxed 'X' and the instruction 'gr. rit....'. Measure 12 ends with a double bar line and the word 'FIN.'.

1+2 Violinen

1 *rit.* *gr. rit.* *fin* *Tempo*

2

D.C.

gr. rit. *FIN.*

Bratschen

Tempo

Handwritten musical notation for the first system. It consists of a single staff with a treble clef, a key signature of two flats (Bb), and a common time signature (C). The notation includes several measures with notes and rests, some marked with accents. A dynamic marking of *ff* is present. A double bar line is followed by a repeat sign and the word "rit.....".

Handwritten musical notation for the second system, consisting of two staves. The top staff has a treble clef, a key signature of two flats (Bb), and a common time signature (C). It features a series of notes with slurs. The bottom staff has a bass clef, a key signature of two flats (Bb), and a common time signature (C), with notes and rests. A circled plus sign (+) is written above the first measure of the bottom staff. The system ends with a double bar line and a circled X.

Handwritten musical notation for the third system, consisting of two staves. The top staff has a treble clef, a key signature of two flats (Bb), and a common time signature (C). It contains notes with slurs and accents. The bottom staff has a bass clef, a key signature of two flats (Bb), and a common time signature (C), with notes and rests. A circled plus sign (+) is written above the first measure of the top staff.

Handwritten musical notation for the fourth system, consisting of three staves. The top staff has a treble clef, a key signature of two flats (Bb), and a common time signature (C). It includes notes with slurs and accents, and a section marked "Da capo" with a double bar line. The middle and bottom staves have treble clefs, a key signature of two flats (Bb), and a common time signature (C), with notes and rests. The system ends with a double bar line and a circled X.

Handwritten musical notation for the fifth system, consisting of a single staff. It has a treble clef, a key signature of two flats (Bb), and a common time signature (C). The notation includes notes and rests, with a dynamic marking of *ff* and the word "gr. rit" written below. The system concludes with a double bar line, a repeat sign, and the word "FIN.".

C+B.

Tempo

Handwritten musical notation for C and B staves. The C staff begins with a treble clef, a key signature of one flat (Bb), and a common time signature (C). The B staff begins with a bass clef, a key signature of one flat (Bb), and a common time signature (C). The notation includes various rhythmic values and accidentals. The word "primit..." is written between the staves. A dynamic marking "pizz" is present below the B staff.

Handwritten musical notation for two staves, both in bass clef and one flat key signature. The notation features sustained notes and rhythmic patterns.

Handwritten musical notation for two staves, both in bass clef and one flat key signature. The notation includes sustained notes and rhythmic patterns.

Handwritten musical notation for two staves, both in bass clef and one flat key signature. The notation includes a double bar line with repeat dots, a wavy line indicating a section, and a shaded rectangular area. The word "arco" is written below the first staff.

Handwritten musical notation for two staves, both in bass clef and one flat key signature. The notation includes a circled "a2" above the first staff and a circled "a2" above the second staff. The word "D.C." is written at the end of the second staff.

Handwritten musical notation for two staves, both in bass clef and one flat key signature. The notation includes a wavy line at the end of the second staff.

Handwritten musical notation for two staves, both in bass clef and one flat key signature. The notation includes a circled "a2" above the first staff, a shaded rectangular area, and the word "FIN." at the end of the second staff. The word "primit..." is written below the first staff.

Schlagzeug

Handwritten musical notation on a single staff. It begins with a double bar line and a common time signature (C). The first measure contains a quarter note followed by a triplet of eighth notes. The second measure contains a quarter note followed by a triplet of eighth notes. The third measure contains a quarter note. The fourth measure contains a quarter note with a fermata above it. The word "Tempo" is written above the fourth measure. The piece ends with a double bar line.

f

gr. rit...

Handwritten musical notation on a single staff. It begins with a double bar line and a common time signature (C). The first measure contains a quarter note followed by a pair of beamed eighth notes. The second measure contains a quarter note followed by a pair of beamed eighth notes. The third measure contains a quarter note with a slash through it. The fourth measure contains a quarter note with a slash through it. The fifth measure contains a quarter note with a slash through it. The sixth measure contains a quarter note with a slash through it. The seventh measure contains a quarter note with a slash through it. The eighth measure contains a quarter note with a slash through it. The piece ends with a double bar line.

Handwritten musical notation on a single staff. It begins with a double bar line and a common time signature (C). The first measure contains a quarter note followed by a pair of beamed eighth notes. The second measure contains a quarter note followed by a pair of beamed eighth notes. The third measure contains a quarter note with a slash through it. The fourth measure contains a quarter note with a slash through it. The fifth measure contains a quarter note with a slash through it. The sixth measure contains a quarter note with a slash through it. The seventh measure contains a quarter note with a slash through it. The eighth measure contains a quarter note with a slash through it. The piece ends with a double bar line and a fermata.

Handwritten musical notation on a single staff. It begins with a double bar line and a common time signature (C). The first measure contains a quarter note followed by a pair of beamed eighth notes. The second measure contains a quarter note followed by a pair of beamed eighth notes. The third measure contains a quarter note with a slash through it. The fourth measure contains a quarter note with a slash through it. The fifth measure contains a quarter note with a slash through it. The sixth measure contains a quarter note with a slash through it. The seventh measure contains a quarter note with a slash through it. The eighth measure contains a quarter note with a slash through it. The piece ends with a double bar line.

Handwritten musical notation on a single staff. It begins with a double bar line and a common time signature (C). The first measure contains a quarter note followed by a pair of beamed eighth notes. The second measure contains a quarter note followed by a pair of beamed eighth notes. The third measure contains a quarter note with a slash through it. The fourth measure contains a quarter note with a slash through it. The fifth measure contains a quarter note with a slash through it. The sixth measure contains a quarter note with a slash through it. The seventh measure contains a quarter note with a slash through it. The eighth measure contains a quarter note with a slash through it. The piece ends with a double bar line and the marking "D.C." (Da Capo).

Handwritten musical notation on a single staff. It begins with a double bar line and a common time signature (C). The first measure contains a quarter note followed by a pair of beamed eighth notes. The second measure contains a quarter note followed by a pair of beamed eighth notes. The third measure contains a quarter note with a slash through it. The fourth measure contains a quarter note with a slash through it. The fifth measure contains a quarter note with a slash through it. The sixth measure contains a quarter note with a slash through it. The seventh measure contains a quarter note with a slash through it. The eighth measure contains a quarter note with a slash through it. The piece ends with a double bar line and a fermata.

Handwritten musical notation on a single staff. It begins with a double bar line and a common time signature (C). The first measure contains a quarter note followed by a pair of beamed eighth notes. The second measure contains a quarter note followed by a pair of beamed eighth notes. The third measure contains a quarter note. The fourth measure contains a quarter note with a fermata above it. The piece ends with a double bar line and the marking "C. dim" (Crescendo diminuendo).

gr. rit...

C. dim

FIN.