

L.V. BEETHOVEN



W.A. MOZART



NOTENHEFT

F. SCHUBERT



J. HAYDN



J. STRAUSS



Konzert für

Flöte und

Symphoniestr.

3 Sätze

1965

Edvard Grieg

(Wiederholungen
müssen gemacht
werden!)

Spieldauer (zirka
23 Min.)

Allegro con brio

Handwritten musical score for a piece titled "Allegro con brio". The score is written for five instruments: Flute (Fl.), Violin (Vcllo), Viola (Vcllo), Cello/Double Bass (Cello/Bass), and Piano (Schlagwerk). The music is organized into three systems, each containing five staves. The first system includes a circled 'f' in the Flute staff and a circled 'f' at the end of the system. The second system includes a circled 'f' at the end of the system. The third system includes a circled 'f' at the end of the system. The score features various musical notations, including triplets, slurs, and dynamic markings such as 'f' and '4 f'. The tempo is indicated as "Allegro con brio".

Handwritten musical score for the first system, measures 127-129. The score is written on five staves. The top staff is the treble clef, and the bottom staff is the bass clef. The middle three staves are grouped by a brace on the left. Measure 127 features a treble clef with a sharp sign and a circled '2'. Measure 128 contains a circled '2' in the bass clef and a circled 'ff' in the middle staff. Measure 129 includes a circled 'ff' in the middle staff and a circled 'f' in the bass clef. The notation includes various notes, rests, and dynamic markings.

Handwritten musical score for the second system, measures 130-132. The score is written on five staves. The top staff is the treble clef, and the bottom staff is the bass clef. The middle three staves are grouped by a brace on the left. Measure 130 features a circled '3' in the middle staff. Measure 131 includes a circled '3' in the middle staff and a circled '3' in the bass clef. Measure 132 contains a circled '3' in the middle staff and a circled '3' in the bass clef. The notation includes various notes, rests, and dynamic markings.

Handwritten musical score for the third system, measures 133-135. The score is written on five staves. The top staff is the treble clef, and the bottom staff is the bass clef. The middle three staves are grouped by a brace on the left. Measure 133 features a circled '4' in the middle staff. Measure 134 includes a circled '4' in the middle staff and a circled '4' in the bass clef. Measure 135 contains a circled '4' in the middle staff and a circled '4' in the bass clef. The notation includes various notes, rests, and dynamic markings.

Handwritten musical score for system 5. It consists of four staves. The top staff is a treble clef with a key signature of one sharp (F#) and a circled number 5. The second and third staves are a grand staff (treble and bass clefs). The bottom staff is a bass clef. The music features complex rhythmic patterns, including triplets and sixteenth notes, with various accidentals and dynamic markings.

Handwritten musical score for system 6. It consists of four staves. The top staff is a treble clef with a circled number 6. The second and third staves are a grand staff. The bottom staff is a bass clef. The music continues with complex rhythmic patterns and includes a circled number 6 at the end of the system.

Handwritten musical score for system 7. It consists of four staves. The top staff is a treble clef with a circled number 7. The second and third staves are a grand staff. The bottom staff is a bass clef. The music continues with complex rhythmic patterns and includes a circled number 7 at the end of the system.

Handwritten musical score for system 8, measures 1-4. The system includes a treble clef with a melodic line of eighth notes, a bass clef with a bass line, and a grand staff with piano accompaniment. The word "cresc." is written in the middle of the system. There are various performance markings like "p" and "f".

Handwritten musical score for system 9, measures 1-4. The system includes a treble clef with a melodic line of eighth notes, a bass clef with a bass line, and a grand staff with piano accompaniment. There are various performance markings like "f".

Handwritten musical score for system 10, measures 1-4. The system includes a treble clef with a melodic line, a bass clef with a bass line, and a grand staff with piano accompaniment. The word "dim" is written in the first measure. There are various performance markings like "p" and "f".

Handwritten musical score for the first system, consisting of five staves. The notation includes treble and bass clefs, a key signature of one sharp (F#), and various musical symbols such as notes, rests, and dynamic markings. A circled number '11' is located in the top right corner of the system.

Handwritten musical score for the second system, consisting of five staves. The notation includes treble and bass clefs, a key signature of one sharp (F#), and various musical symbols such as notes, rests, and dynamic markings. A circled number '12' is located in the top right corner of the system.

Handwritten musical score for the third system, consisting of five staves. The notation includes treble and bass clefs, a key signature of one flat (Bb), and various musical symbols such as notes, rests, and dynamic markings. A circled number '13' is located in the top right corner of the system.

14

Handwritten musical score for measures 14-15. The top staff contains a melodic line with various accidentals and slurs. The piano accompaniment consists of three staves with sustained chords and a fermata over the final measure. Dynamic markings include *mp* and *ff*. A circled measure number '14' is at the end of the first system.

15

Handwritten musical score for measures 15-16. The top staff continues the melodic line. The piano accompaniment features sustained chords with a fermata. Dynamic markings include *mp* and *ff*. A circled measure number '15' is at the end of the second system.

16

Handwritten musical score for measures 16-17. The top staff includes the instruction *(frei)* and *(poco rit...)*. The piano accompaniment has a dynamic marking of *f* and a *CODA* symbol at the end. A circled measure number '16' is at the end of the third system. The bottom of the page contains some faint handwritten notes and a circled measure number '17'.

17

Handwritten musical score for system 17, measures 1-3. The system consists of five staves. The top staff is a single line with a treble clef, containing a melodic line with a triplet of eighth notes in the first measure and a half note in the second. The second staff is a single line with a treble clef, containing a melodic line with a half note in the first measure and a half note in the second. The third and fourth staves are grouped by a brace on the left and contain a piano accompaniment with triplet eighth notes in the first measure. The fifth staff is a single line with a bass clef, containing a melodic line with a half note in the first measure and a half note in the second. The dynamic marking *ff* is present in the first measure of the top two staves.

18

Handwritten musical score for system 18, measures 1-3. The system consists of five staves. The top staff is a single line with a treble clef, containing a melodic line with a half note in the first measure and a half note in the second. The second staff is a single line with a treble clef, containing a melodic line with a half note in the first measure and a half note in the second. The third and fourth staves are grouped by a brace on the left and contain a piano accompaniment with triplet eighth notes in the first measure. The fifth staff is a single line with a bass clef, containing a melodic line with a half note in the first measure and a half note in the second. The dynamic marking *ff* is present in the first measure of the top two staves.

19

Handwritten musical score for system 19, measures 1-3. The system consists of five staves. The top staff is a single line with a treble clef, containing a melodic line with a half note in the first measure and a half note in the second. The second staff is a single line with a treble clef, containing a melodic line with a half note in the first measure and a half note in the second. The third and fourth staves are grouped by a brace on the left and contain a piano accompaniment with triplet eighth notes in the first measure. The fifth staff is a single line with a bass clef, containing a melodic line with a half note in the first measure and a half note in the second. The dynamic marking *ff* is present in the first measure of the top two staves. The word *dim* is written above the second measure of the top staff, and *(poco rit)* is written above the third measure of the top staff.

p *Osc.*

Meno

20

21

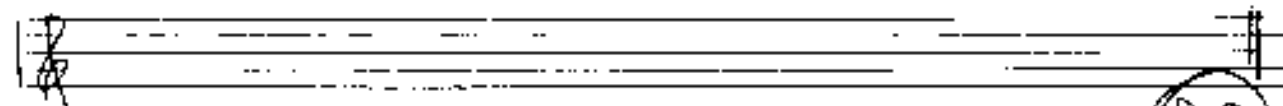
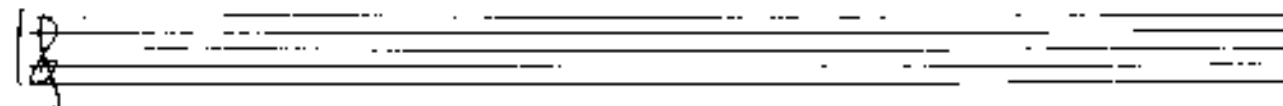
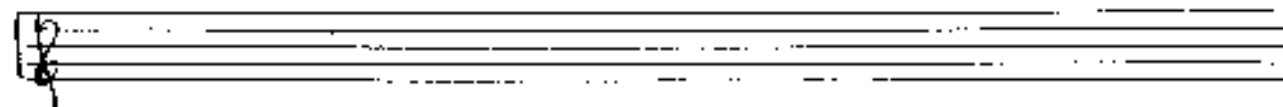
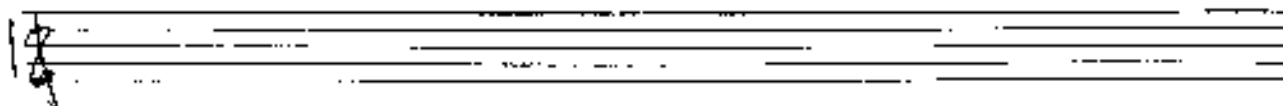
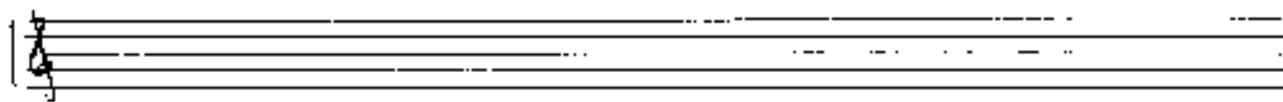
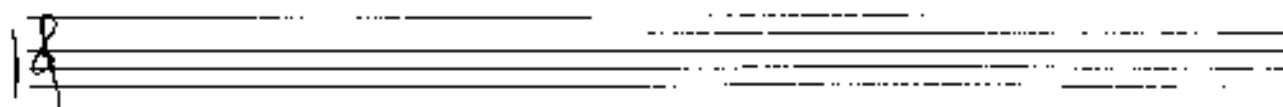
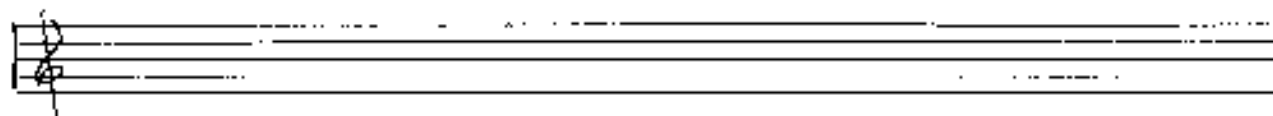
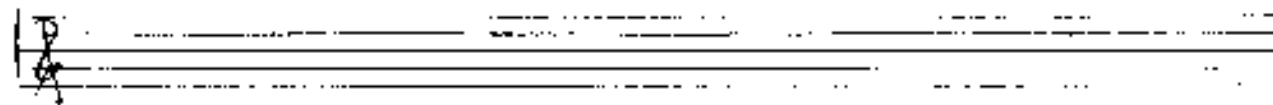
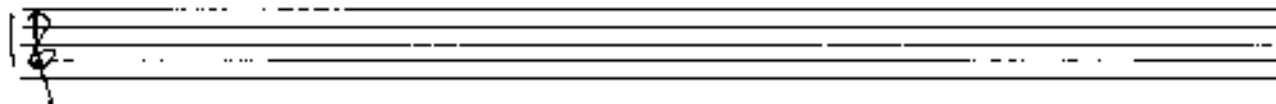
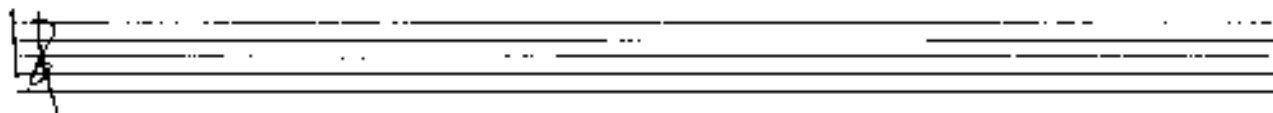
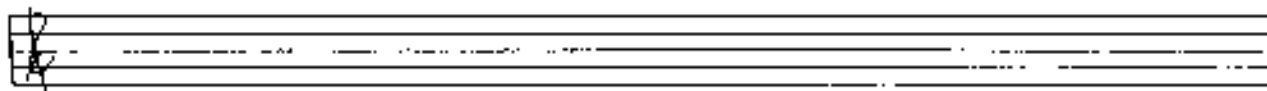
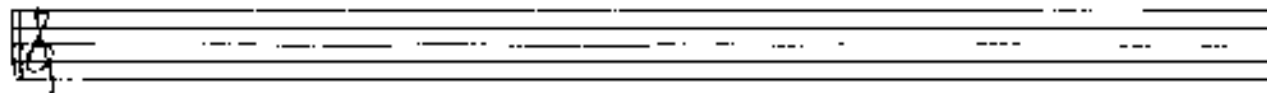
22

23


24

2/4

Solo (Forte) frei



rit - - -

D.e.  CODA

♯ C♯ D A *cello parallel*
b
10

Handwritten musical score for the first system. It features a treble clef and a grand staff with piano accompaniment. The notation includes various notes, rests, and dynamic markings. A bracket above the first two measures indicates a phrase. The piano part consists of chords and arpeggiated figures.

Handwritten musical score for the second system. It features a treble clef and a grand staff with piano accompaniment. The notation includes various notes, rests, and dynamic markings. A bracket above the first two measures indicates a phrase. The piano part consists of chords and arpeggiated figures.

♯ L17 7 2 L17 7 2 L17 7 2

Handwritten musical score for the third system. It features a treble clef and a grand staff with piano accompaniment. The notation includes various notes, rests, and dynamic markings. A bracket above the first two measures indicates a phrase. The piano part consists of chords and arpeggiated figures.

L19 3 5 7 L19 3 5 7 L19 3 5 7

FINE

7 Maggio

(2)

(1)

Handwritten musical score for the first system, measures 1-4. The score is written on four staves. The top staff is a vocal line with a treble clef and a key signature of one flat. It begins with a circled '1' and contains a melodic line with various ornaments and dynamics. The second and third staves are piano accompaniment, both starting with a circled '1' and a dynamic marking of *pp*. The bottom staff is a bass line with a bass clef, starting with a circled '1' and a dynamic marking of *pp*. The system concludes with a circled '1' at the end of the fourth measure.

Handwritten musical score for the second system, measures 5-8. The score is written on four staves. The top staff is a vocal line with a treble clef and a key signature of one flat. It begins with a circled '2' and contains a melodic line with various ornaments and dynamics. The second and third staves are piano accompaniment, both starting with a circled '2' and a dynamic marking of *pp*. The bottom staff is a bass line with a bass clef, starting with a circled '2' and a dynamic marking of *f* with a '33' subscript. The system concludes with a circled '2' at the end of the eighth measure.

Handwritten musical score for the third system, measures 9-12. The score is written on four staves. The top staff is a vocal line with a treble clef and a key signature of one flat. It begins with a circled '3' and contains a melodic line with various ornaments and dynamics. The second and third staves are piano accompaniment, both starting with a circled '3' and a dynamic marking of *fp*. The bottom staff is a bass line with a bass clef, starting with a circled '3' and a dynamic marking of *f*. The system concludes with a circled '3' at the end of the twelfth measure.

Handwritten musical score for measures 3 and 4. The score is written on five staves. Measure 3 is marked with a circled '3' above the first staff. Measure 4 is marked with a circled '4' above the first staff. The notation includes various notes, rests, and dynamic markings such as 'p' (piano) and 'p<' (piano). There are also some handwritten annotations and slurs.

Handwritten musical score for measures 5 and 6. The score is written on five staves. Measure 5 is marked with a circled '5' above the first staff. Measure 6 is marked with a circled '6' above the first staff. The notation includes various notes, rests, and dynamic markings such as 'f' (forte) and 'f=' (forte). There are also some handwritten annotations and slurs.

Handwritten musical score for measure 7. The score is written on five staves. Measure 7 is marked with a circled '7' above the first staff. The notation includes various notes, rests, and dynamic markings such as 'f' (forte). There are also some handwritten annotations and slurs.

8

Handwritten musical score for the first system, measures 1-3. The score is written on a grand staff (treble and bass clefs). Above the staff, there are guitar chord diagrams for measures 1, 2, and 3. The notation includes notes, rests, and dynamic markings like 'p' and 'f'. Rhythmic patterns are indicated by numbers like '111 111 111' and '111 111 111'.

Solo

Handwritten musical score for the second system, measures 4-6. The score is written on a grand staff (treble and bass clefs). The notation includes notes, rests, and dynamic markings like 'p', 'f', and 'mf'. There are circled measure numbers 9, 10, 11, and 12. A circled '18' is also present. A circled 'D' is at the end of the system.

(letzte + gut)

Handwritten musical score for the third system, measures 7-9. The score is written on a grand staff (treble and bass clefs). The notation includes notes, rests, and dynamic markings like 'pp'. The text "(letzte + gut)" is written in the middle of the system.

11

(1)

Handwritten musical score for system 11, measures 1-2. The top staff (treble clef) contains a complex melodic line with many notes and accidentals, including a circled '11' and a circled '(1)'. The grand staff below it shows piano accompaniment with dynamics *mf*, *pp*, and *p*. A circled 'p' is also present in the bass line.

12

Handwritten musical score for system 12, measures 3-4. The top staff continues the melodic line with a circled '12'. The grand staff shows piano accompaniment with dynamics *p*. A circled 'p' is also present in the bass line.

f

f

Handwritten musical score for system 13, measures 5-6. The top staff continues the melodic line with dynamics *f* and *p*. The grand staff shows piano accompaniment with dynamics *f* and *p*. A circled 'f' is present in the bass line.

Handwritten musical notation for the first system, measures 12-13. The notation is dense with many notes and includes a circled measure number '13' at the end. A circled '74' is written on the left side of the first staff.

Handwritten musical notation for the second system, measures 12-13. It features a grand staff with a piano part. The notation includes a circled '74' on the left and a dynamic marking 'ff' (fortissimo) in the first staff.

Handwritten musical notation for the third system, measures 14-15. The notation is dense with many notes and includes a circled measure number '14' at the end. The word 'molto brevit' is written in the first staff. A circled '74' is written on the left side of the first staff.

Handwritten musical notation for the fourth system, measures 14-15. The notation is dense with many notes and includes a circled measure number '15' at the end. The word 'poco' is written in the first staff, and 'accel' (accelerando) is written below the first staff.

Presto

16

Handwritten musical score for the first system. It features a treble clef staff with a key signature of one sharp (F#) and a common time signature. The music consists of a series of chords and melodic fragments, with some notes beamed together. A dynamic marking of *f* (forte) is present. The bottom two staves (bass clef) are mostly empty, with a few notes and rests. A circled number '16' is in the top right corner.

percuato

17

Handwritten musical score for the second system. It features a treble clef staff with a key signature of one sharp (F#) and a common time signature. The music consists of a series of chords and melodic fragments, with some notes beamed together. Dynamic markings include *f* (forte) and *pp* (pianissimo). The bottom two staves (bass clef) contain notes and rests. A circled number '17' is in the top right corner.

(26 + rit)

dim

18

Handwritten musical score for the third system. It features a treble clef staff with a key signature of one sharp (F#) and a common time signature. The music consists of a series of chords and melodic fragments, with some notes beamed together. Dynamic markings include *pp* (pianissimo) and *f* (forte). A circled number '18' is in the top right corner. The bottom two staves (bass clef) are mostly empty.

D.C.
al
Coda

♯ CODA

Fine

Handwritten musical score for the first system. It consists of five staves. The top staff is a vocal line with a treble clef and a key signature of one flat (B-flat). The word "lunga" is written above the staff. The second staff is a vocal line with a bass clef and a key signature of one flat. The third and fourth staves are piano accompaniment for the right and left hands, respectively, with treble and bass clefs. The bottom staff contains rhythmic notation and dynamic markings such as pp and ppp . There are circled numbers 1, 2, and 3 above the staves, and a circled 'p' at the beginning of the piano part.

Presto

3

1

2

Handwritten musical score for the second system, featuring a piano solo. It consists of three staves. The top staff is the right hand with a treble clef and a key signature of one flat. The middle staff is the left hand with a bass clef and a key signature of one flat. The bottom staff is a grand staff with both treble and bass clefs. The word "Larghetto" is written above the top staff. There are circled numbers 1, 2, and 3 above the staves, and circled numbers 1, 2, and 3 below the staves.

Handwritten musical score for the third system, featuring a piano solo. It consists of three staves. The top staff is the right hand with a treble clef and a key signature of one flat. The middle staff is the left hand with a bass clef and a key signature of one flat. The bottom staff is a grand staff with both treble and bass clefs. The word "Pizz" is written above the top staff. There are circled numbers 1, 2, and 3 above the staves, and circled numbers 1, 2, and 3 below the staves.

④

Handwritten musical score for system 4. It consists of a grand staff with three staves. The top staff contains complex chordal textures with many notes and some accidentals. The middle and bottom staves contain a rhythmic accompaniment of eighth notes. A circled number '4' is in the top right corner.

⑤

Handwritten musical score for system 5. It consists of a grand staff with three staves. The top staff contains complex chordal textures with many notes and some accidentals. The middle and bottom staves contain a rhythmic accompaniment of eighth notes. A circled number '5' is in the top right corner.

⑥

Handwritten musical score for system 6. It consists of a grand staff with three staves. The top staff contains complex chordal textures with many notes and some accidentals. The middle and bottom staves contain a rhythmic accompaniment of eighth notes. A circled number '6' is in the top right corner.

Handwritten musical score for measures 7 and 8. The system consists of three staves: a single treble clef staff at the top and a grand staff (treble and bass clefs) below. Measure 7 contains a complex melodic line with many accidentals (sharps and flats) and slurs. Measure 8 is mostly empty, with diagonal slashes indicating rests or omitted notes. A circled number '7' is in the top right corner.

Handwritten musical score for measures 9 and 10. The system consists of three staves. Measure 9 features a melodic line with a triplet of notes, indicated by a bracket and the number '3'. Measure 10 is mostly empty with diagonal slashes. A circled number '9' is in the top right corner.

Handwritten musical score for measures 11 and 12. The system consists of three staves. Measure 11 has a melodic line with many accidentals and slurs. Measure 12 is mostly empty with diagonal slashes. A circled number '9' is in the top right corner.

⑨ 1 2 3 4 5 6 7 8 9 10 11 12

Handwritten musical score for measures 17-20. The system includes a treble clef, a key signature of one sharp (F#), and a 3/4 time signature. The notation consists of a single melodic line with various slurs, ties, and accidentals. A circled '11' is present in the first measure.

Handwritten musical score for measures 21-24. The system includes a treble clef, a key signature of one sharp (F#), and a 3/4 time signature. The notation consists of a single melodic line with various slurs, ties, and accidentals. A circled '12' is present in the first measure. There are also some handwritten annotations like 'p133' and 'p'.

Handwritten musical score for measures 25-28. The system includes a treble clef, a key signature of one sharp (F#), and a 3/4 time signature. The notation consists of a single melodic line with various slurs, ties, and accidentals. A circled '13' is present in the first measure. There are also some handwritten annotations like 'ano' and '14'.

12

Handwritten musical score for measures 12-13. The top staff is a treble clef with a circled sharp sign. The piano part consists of three staves. The first piano staff has a circled sharp sign and the text "p153 hart". The second piano staff has a circled sharp sign and the text "p117". The third piano staff has a circled sharp sign. The music includes various notes, rests, and slurs.

13

Handwritten musical score for measures 13-14. The top staff is a treble clef with a circled sharp sign. The piano part consists of three staves. The first piano staff has a circled sharp sign and the text "p153". The second piano staff has a circled sharp sign and the text "p117". The third piano staff has a circled sharp sign. The music includes various notes, rests, and slurs.

14

Handwritten musical score for measures 14-15. The top staff is a treble clef with a circled sharp sign. The piano part consists of three staves. The first piano staff has a circled sharp sign and the text "p153". The second piano staff has a circled sharp sign and the text "p117". The third piano staff has a circled sharp sign. The music includes various notes, rests, and slurs.

Handwritten musical notation at the bottom of the page, including notes and rests.

16

17

CODA

17

P.C.

4 2 9

4 2 9

(auf 1. Violin)

(p)

arco.

(17)

Handwritten musical score for measures 21 and 22. The system includes a vocal line and a piano accompaniment. Measure 21 is marked with a circled '21' and contains the word 'aro' written below the vocal staff. Measure 22 is marked with a circled '22'. The piano part features complex chordal textures with many accidentals (sharps and naturals) and slurs. The vocal line has a melodic line with some slurs and accents.

Handwritten musical score for measures 23 and 24. The system includes a vocal line and a piano accompaniment. Measure 23 is marked with a circled '23' and contains the number '2' written below the vocal staff. Measure 24 is marked with a circled '24'. The piano part features complex chordal textures with many accidentals and slurs. The vocal line has a melodic line with some slurs and accents.

Handwritten musical score for measure 25. The system includes a vocal line and a piano accompaniment. Measure 25 is marked with a circled '25' and contains the word 'dest' written below the vocal staff. The piano part features complex chordal textures with many accidentals and slurs. The vocal line has a melodic line with some slurs and accents. To the right of the score, there are handwritten notes: '2. +', 'D.E.', 'al', and 'GSPH'. At the bottom of the page, there are handwritten musical notations including a treble clef, a key signature of one sharp, and a series of notes with slurs and accents.

(noh arve)

Handwritten musical score for the first system. It features a treble clef, a key signature of one sharp (F#), and a common time signature. The score includes a melodic line with slurs and accents, and a bass line with chords and fingerings. A large bracket above the staff indicates a section.

Handwritten musical score for the second system. It features a treble clef, a key signature of one sharp (F#), and a common time signature. The score includes a melodic line with slurs and accents, and a bass line with chords and fingerings. A large bracket above the staff indicates a section.

Handwritten musical score for the third system. It features a treble clef, a key signature of one sharp (F#), and a common time signature. The score includes a melodic line with slurs and accents, and a bass line with chords and fingerings. A large bracket above the staff indicates a section. The system ends with a circled number '1965' and the name 'Loloh'.