

L.v. BEETHOVEN



W.A. MOZART



NOTENHEFT

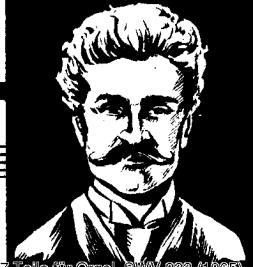
F. SCHUBERT



J. HAYDN



J. STRAUSS



Nr. 408

7 Teile für Orgel

Adolf Scherbaum

(Variationen über eine Tonfolge)

sehr ruhig

ORGEL

Handwritten musical notation for the first system. The treble clef staff begins with a whole note G4. The bass clef staff begins with a whole note G3. The system contains two measures. The first measure has a treble clef staff with notes G4, A4, B4, C5, D5, E5, F5, G5 and a bass clef staff with notes G3, A3, B3, C4, D4, E4, F4, G4. The second measure has a treble clef staff with notes G4, A4, B4, C5, D5, E5, F5, G5 and a bass clef staff with notes G3, A3, B3, C4, D4, E4, F4, G4. The system ends with a double bar line.

Handwritten musical notation for the second system. The treble clef staff begins with a whole note G4. The bass clef staff begins with a whole note G3. The system contains three measures. The first measure has a treble clef staff with notes G4, A4, B4, C5, D5, E5, F5, G5 and a bass clef staff with notes G3, A3, B3, C4, D4, E4, F4, G4. The second measure has a treble clef staff with notes G4, A4, B4, C5, D5, E5, F5, G5 and a bass clef staff with notes G3, A3, B3, C4, D4, E4, F4, G4. The third measure has a treble clef staff with notes G4, A4, B4, C5, D5, E5, F5, G5 and a bass clef staff with notes G3, A3, B3, C4, D4, E4, F4, G4. The system ends with a double bar line.

Handwritten musical notation for the third system. The treble clef staff begins with a whole note G4. The bass clef staff begins with a whole note G3. The system contains two measures. The first measure has a treble clef staff with notes G4, A4, B4, C5, D5, E5, F5, G5 and a bass clef staff with notes G3, A3, B3, C4, D4, E4, F4, G4. The second measure has a treble clef staff with notes G4, A4, B4, C5, D5, E5, F5, G5 and a bass clef staff with notes G3, A3, B3, C4, D4, E4, F4, G4. The system ends with a double bar line. To the right of the double bar line, the following performance instructions are written: 2. x, D. C., al, Fin.

Allegretto (quasi Mosso) 2.

Handwritten musical notation for the first system. The treble clef part begins with a 3/4 time signature. The bass clef part starts with a 4/4 time signature. The notation includes various notes, rests, and accidentals.

Handwritten musical notation for the second system, continuing the piece with treble and bass clefs.

Handwritten musical notation for the third system, showing further development of the musical theme.

Handwritten musical notation for the fourth system, concluding the piece with treble and bass clefs.

Handwritten musical notation for the first system. The treble clef part shows a key signature of one flat (B-flat) and contains three measures of chords with fermatas. The piano part begins with a forte (*f*) dynamic and features a melodic line with various intervals and a fermata in the third measure.

Handwritten musical notation for the second system. The treble clef part has a key signature of one sharp (F-sharp) and contains three measures of chords. The piano part starts with a piano (*p*) dynamic and features a long, sustained note in the first measure.

Handwritten musical notation for the third system. The treble clef part has a key signature of one sharp and contains three measures of chords. The piano part includes a fermata and a marking for a second ending with a ritardando (*2. + rit.*).

Handwritten musical notation for the fourth system. The treble clef part has a key signature of one sharp and contains two measures of chords. The piano part starts with a piano (*pp*) dynamic and ends with a circled "Fin" marking.

3.

lento (solo pedale)

Handwritten musical notation for the first system, measures 1-3. The music is in G major (one sharp) and 4/8 time. The first measure contains a piano dynamic marking 'p' and a '4' above the staff. The right hand plays a sequence of notes: B4 (quarter), D5 (quarter), B4 (quarter), A4 (quarter), G4 (quarter), F#4 (quarter), E4 (quarter), D4 (quarter). The left hand plays chords: G4-B4 (quarter), G4-B4 (quarter), G4-B4 (quarter), G4-B4 (quarter), G4-B4 (quarter), G4-B4 (quarter), G4-B4 (quarter), G4-B4 (quarter).

Handwritten musical notation for the second system, measures 4-6. The right hand continues the melodic line: C#4 (quarter), B4 (quarter), A4 (quarter), G4 (quarter), F#4 (quarter), E4 (quarter), D4 (quarter), C#4 (quarter). The left hand continues with chords: G4-B4 (quarter), G4-B4 (quarter), G4-B4 (quarter), G4-B4 (quarter), G4-B4 (quarter), G4-B4 (quarter), G4-B4 (quarter), G4-B4 (quarter).

Handwritten musical notation for the third system, measures 7-9. The right hand continues: C#4 (quarter), B4 (quarter), A4 (quarter), G4 (quarter), F#4 (quarter), E4 (quarter), D4 (quarter), C#4 (quarter). The left hand continues with chords: G4-B4 (quarter), G4-B4 (quarter), G4-B4 (quarter), G4-B4 (quarter), G4-B4 (quarter), G4-B4 (quarter), G4-B4 (quarter), G4-B4 (quarter).

Handwritten musical notation for the first system, consisting of two staves. The top staff is in treble clef and the bottom in bass clef. The music features various chords and melodic lines with accidentals.

Handwritten musical notation for the second system, consisting of two staves. The top staff is in treble clef and the bottom in bass clef. The system includes the handwritten annotation "letzte + ev. rit" and a circled "Fin" at the end.

Handwritten musical notation for the third system, consisting of two staves. The top staff is in treble clef and the bottom in bass clef. The system begins with a "pp" dynamic marking.

Handwritten musical notation for the fourth system, consisting of two staves. The top staff is in treble clef and the bottom in bass clef. The system ends with "D.C. al Fin" and a circled "Fin".

Presto

4.

Handwritten musical notation for the first system, measures 1-3. The music is in 4/4 time, marked 'Presto'. The key signature has one sharp (F#). The notation features dense sixteenth-note patterns in the right hand and simpler rhythmic accompaniment in the left hand.

Handwritten musical notation for the second system, measures 4-6. The notation continues with complex sixteenth-note textures in the right hand and accompaniment in the left hand.

Handwritten musical notation for the third system, measures 7-9. The notation continues with complex sixteenth-note textures in the right hand and accompaniment in the left hand.

Handwritten musical notation for the fourth system, measures 10-12. The notation continues with complex sixteenth-note textures in the right hand and accompaniment in the left hand.

Handwritten musical notation for the first system, featuring a treble and bass staff with complex chordal textures and accidentals.

Handwritten musical notation for the second system, continuing the complex chordal textures from the first system.

Handwritten musical notation for the third system, showing more complex textures and some melodic lines in the treble staff.

3 + (3. ^{gr.} rit)

Handwritten musical notation for the fourth system, including performance instructions like "lunga" and "rit".

5.

frei (wie Kadenz)

erregt. — frei —

Handwritten musical notation for the second system, continuing the melody with three phrases, each enclosed in a bracket. The key signature changes to two sharps (F# and C#).

pesante

Handwritten musical notation for the third system, starting with a phrase in the treble clef and followed by four measures of music in the bass clef, each containing a single note with a fermata. The key signature changes to one sharp (F#).

Handwritten musical score for the first system. It consists of two staves. The upper staff is in treble clef and contains several notes with accidentals (flats and sharps). A circled annotation "FN" is present above the staff. The lower staff is in bass clef and contains notes with accidentals. A large bracket spans across both staves, and the number "24" is written below it.

Handwritten musical score for the second system. It consists of two staves. The upper staff is in treble clef and contains a series of notes with accidentals, connected by a large slur. The lower staff is in bass clef and contains notes with accidentals, also connected by a large slur that spans across both staves.

Handwritten musical score for the third system. It consists of two staves. The upper staff is in treble clef and contains a series of notes with accidentals. The word "purbates" is written above the staff. The lower staff is in bass clef and contains notes with accidentals.

Handwritten musical score for the fourth system. It consists of two staves. The upper staff is in treble clef and contains notes with accidentals. The word "pesante" is written above the staff. The lower staff is in bass clef and contains notes with accidentals. The annotation "D.C." is written at the end of the system.

6.

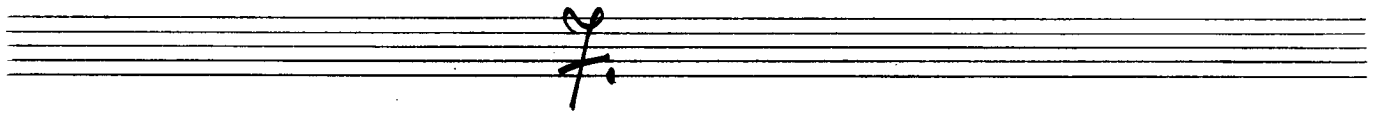
Allegro con brio (auf 1 Schlag = 1 Takt)

Handwritten musical notation for the first system, measures 1-2. The music is in 3/8 time, indicated by a circled '3' and a circled '8'. The key signature has one flat (B-flat). The notation includes treble and bass staves with notes, rests, and slurs. Measure 1 contains a quarter note B-flat, a quarter note D, and a quarter note F. Measure 2 contains a quarter note B-flat, a quarter note D, and a quarter note F. The notes are beamed together and have slurs above them.

Handwritten musical notation for the second system, measures 3-4. The key signature changes to two sharps (F# and C#). The notation includes treble and bass staves with notes, rests, and slurs. Measure 3 contains a quarter note F#, a quarter note A, and a quarter note C#. Measure 4 contains a quarter note F#, a quarter note A, and a quarter note C#. The notes are beamed together and have slurs above them.

Handwritten musical notation for the third system, measures 5-6. The key signature changes to one sharp (F#). The notation includes treble and bass staves with notes, rests, and slurs. Measure 5 contains a quarter note F#, a quarter note A, and a quarter note C#. Measure 6 contains a quarter note F#, a quarter note A, and a quarter note C#. The notes are beamed together and have slurs above them.

2te + immer b weiten versetzen



so ruhig als möglich ausklingen lassen.

größtes mit — ein

Handwritten musical notation for the first system, consisting of a treble clef staff and a bass clef staff. The treble staff contains two measures of music with notes and rests, connected by a slur. The bass staff contains two measures with notes and rests, also connected by a slur. The notation is in a simple, sketchy style.

Handwritten musical notation for the second system, consisting of a treble clef staff and a bass clef staff. The treble staff contains two measures of music with notes and rests, connected by a slur. The bass staff contains two measures with notes and rests, also connected by a slur. The notation is in a simple, sketchy style.

Handwritten musical notation for the third system, consisting of a treble clef staff and a bass clef staff. The treble staff contains two measures of music with notes and rests, connected by a slur. The bass staff contains two measures with notes and rests, also connected by a slur. The notation is in a simple, sketchy style. Dynamic markings include *pp >* and *ppp*. A box labeled "Fine!" is drawn at the end of the system. The word "Lunga" is written above the treble staff.

1965
 W. Adamiker-Scherbaum
 Adolf Scherbaum