

Dialoge 1966

26

für großes

Orchester

Inge Scherbaum

Besetzung: (3 Flöten (Piccolo) Alt Flöte)

3 Oboen

3 Klarin. in C

3 Fagotte

3 Tromp. in C

4 Hörner in F (in Partitur in C)

4 Posaunen

2 Tuben

1 Viol. I

2 Viol. II

BV

Celli

Bässe

Vibraphon

Panzer

Kleine Trommel

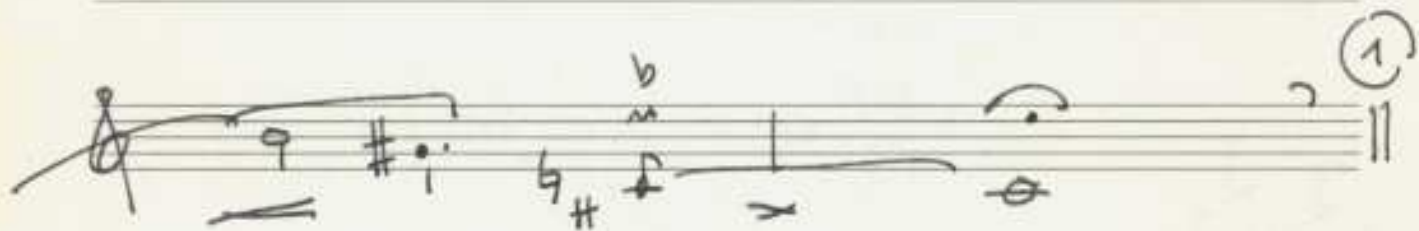
in Teil I
Solo Flöte -
Vibraphon -
Mikrofon für
Perkussion -
Schutzgitter im Saal
schützt.

in Teil III
Solo Flöte -
dann Alt Flöte
Mikrofon -
Mikrofon für



Teil I.

Solo Flöte (sehr langsam)



VIBRAPHON (mit VIBR.)

Pedal - bis (mit ästhetischer Ruhe - jeden Ton bewusst ausschlagen)

doppelt so langsam

1V

2V

Br.

Celli

Basso

7

Pauke

8

Flöte solo

9

9 (wieder doppelt so langsam)

10

ppp

11

(wieder auf sehr langsame 4)

Pauze

pppp

C:1

C:1

C:1

C:1

C:1

C:1

C:1

C:1

subito fff

Teil II.

Presto (rit subito) heftig - bewegt. (sehr rhythmisch + stark.)

3 Tromp. in C
4 Hörner in C notiert
4 Posannen
2 Tuba
Pauken

sehr starke Einsätze -

hart.

①

Handwritten musical score for the first system, measures 1-2. The score is written on five staves. The top staff is a single treble clef staff. The middle three staves are grouped by a brace on the left and represent the piano accompaniment. The bottom staff is a single bass clef staff. The key signature is one flat (B-flat). The time signature is common time (C). The first measure contains a melody in the top staff and piano accompaniment in the other four staves. The second measure continues the melody and accompaniment. The piano accompaniment consists of sustained chords in the right hand and a rhythmic pattern of eighth notes in the left hand.

②

Handwritten musical score for the second system, measures 3-4. The score is written on five staves. The top staff is a single treble clef staff. The middle three staves are grouped by a brace on the left and represent the piano accompaniment. The bottom staff is a single bass clef staff. The key signature is one flat (B-flat). The time signature is common time (C). The third measure contains a melody in the top staff and piano accompaniment in the other four staves. The fourth measure continues the melody and accompaniment. The piano accompaniment consists of sustained chords in the right hand and a rhythmic pattern of eighth notes in the left hand.

Handwritten musical score for the first system, consisting of five staves. The notation includes various notes, rests, and dynamic markings such as *dim*. The first staff has a tempo marking of $\text{♩} = 3$. The second and third staves have a tempo marking of $\text{♩} = 4$. The fourth staff has a tempo marking of $\text{♩} = 2$. The fifth staff is a bass line with a *dim* marking.

Handwritten musical score for the second system, continuing the notation from the first system. It consists of five staves. The first staff ends with a circled number 3. The fifth staff includes a rhythmic pattern of brackets: $\text{[] [] [] [] [] [] [] []$.

3 Fl. $\text{a}3 \text{ G} \parallel \text{D}$

3 OB $\text{a}3 \parallel \text{D}$

3 Klav. inc $\text{a}3 \parallel \text{D}$

3 Fg $\text{a}3$

3 TR $\text{a}3$

4 H $\text{a}3$ [erster - sehr stark beworbener Einsatz des ganzen Orchesters]

4 Po $\text{a}3$

2 Tub $\text{a}3$

1 V $\text{a}3$

2 V $\text{a}3$

Br $\text{a}3$

GtB $\text{a}3$

Pauke $\text{a}3$

4

5

3TR

4H.

4Pos

2Tub

Pauke

6

Pauke Solo

7

Pauke Solo

8

(sehr leichten Streicher-Einsatz)

9

Handwritten musical score for a symphony orchestra, featuring woodwinds, strings, and brass.

Woodwinds (top section):

- Flutes (Fl.): Circled number 23. Part 1 (top) and Part 2 (middle). Part 1 has notes with accidentals (sharps and flats) and slurs. Part 2 has notes with accidentals and slurs.
- Oboes (Ob.): Circled number 23. Part 1 (top) and Part 2 (middle). Part 1 has notes with accidentals and slurs. Part 2 has notes with accidentals and slurs.
- Bassoons (Fag.): Circled number 23. Part 1 (top) and Part 2 (middle). Part 1 has notes with accidentals and slurs. Part 2 has notes with accidentals and slurs.
- Clarinet in B-flat (Cl. Bb): Circled number 23. Part 1 (top) and Part 2 (middle). Part 1 has notes with accidentals and slurs. Part 2 has notes with accidentals and slurs.

Woodwind Instruction: Holz - sehr solistisch hervor)

Strings (middle section):

- Violins (Vln.): Circled number 22. Part 1 (top) and Part 2 (middle). Part 1 has notes with accidentals and slurs. Part 2 has notes with accidentals and slurs.
- Violas (Vcl.): Circled number 22. Part 1 (top) and Part 2 (middle). Part 1 has notes with accidentals and slurs. Part 2 has notes with accidentals and slurs.
- Cellos (Vcl. c.): Circled number 22. Part 1 (top) and Part 2 (middle). Part 1 has notes with accidentals and slurs. Part 2 has notes with accidentals and slurs.
- Double Basses (Vcl. b.): Circled number 22. Part 1 (top) and Part 2 (middle). Part 1 has notes with accidentals and slurs. Part 2 has notes with accidentals and slurs.

String Instruction: alle Streicher glaslares Tremolo)

Brass (bottom section):

- Trumpets (Tr.): Circled number 22. Part 1 (top) and Part 2 (middle). Part 1 has notes with accidentals and slurs. Part 2 has notes with accidentals and slurs.
- Trombones (Tbn.): Circled number 22. Part 1 (top) and Part 2 (middle). Part 1 has notes with accidentals and slurs. Part 2 has notes with accidentals and slurs.
- Timpani (Timp.): Circled number 22. Part 1 (top) and Part 2 (middle). Part 1 has notes with accidentals and slurs. Part 2 has notes with accidentals and slurs.

Conductor's Part (bottom):

- Conductor's baton (CTB): Circled number 22. Part 1 (top) and Part 2 (middle). Part 1 has notes with accidentals and slurs. Part 2 has notes with accidentals and slurs.

Page-Footer: Alfred Bockmann, Komposition für Sinfonie-Orchester, BWV 209, © 1999, © 2010, www.Abraham-Schwaner.de, Alle Rechte vorbehalten.

Handwritten musical notation above the first staff, including vertical lines and symbols like # and o.

Handwritten musical notation above the second staff, including vertical lines and symbols like # and o.

Handwritten musical notation above the third staff, including vertical lines and symbols like # and o.

Handwritten musical notation above the fourth staff, including vertical lines and symbols like # and o.

Handwritten musical notation above the fifth staff, consisting of horizontal lines and dots.

Handwritten musical notation above the sixth staff, consisting of horizontal lines and dots.

Handwritten musical notation above the seventh staff, consisting of horizontal lines and dots.

Handwritten musical notation above the eighth staff, including a treble clef, a key signature of two flats, and notes with stems.

Handwritten musical notation at the bottom of the page, including vertical lines and symbols like # and o.

Pompe Solo

(11)

12

13

letzten 3 Takte

wiederholt

sempre crescendo — bis 14

93

(mit Picc.)

3Fl. 93 *ppp*

3OB. 93 *ppp* (subito *ppp* *sempre crescendo* →)

3Kl. 93 *ppp*

3Fg. 93 *ppp*

Pauke
u.
Trommel *ppp* *diablos Tremolo*

Handwritten musical score for the first system, consisting of five staves. The notation includes complex chords with accidentals (sharps and naturals) and dynamics such as *f* (forte). The first staff has a treble clef and contains a series of chords with accidentals. The second staff has a treble clef and contains a series of notes with accidentals. The third staff has a treble clef and contains a series of notes with accidentals. The fourth staff has a bass clef and contains a series of notes with accidentals. The fifth staff has a bass clef and contains a series of notes with accidentals. The system is divided into two measures by a vertical bar line.

Handwritten musical score for the second system, consisting of five staves. The notation includes complex chords with accidentals (sharps and naturals) and dynamics such as *f* (forte). The first staff has a treble clef and contains a series of chords with accidentals. The second staff has a treble clef and contains a series of notes with accidentals. The third staff has a treble clef and contains a series of notes with accidentals. The fourth staff has a bass clef and contains a series of notes with accidentals. The fifth staff has a bass clef and contains a series of notes with accidentals. The system is divided into two measures by a vertical bar line. A circled number '15' is written in the upper right corner of the system.

Vibraphon [sehr solistisch — sempre *fff*]

15

Pedal bis 

16

17

18

19

20

21

3 Flöten
Sobran
VIBR.
Solo Violine

ff ppp
ff ppp

ppp [Ped. bis x]

flüsternden Ton

22

sul 5

ppp

ff

Solo Viol.
Subito

(frei spielen)

Handwritten musical notation for measure 23. The staff is in treble clef with a key signature of one sharp (F#). The notation includes a series of notes with stems, some beamed together, and a final chord with a circled measure number 23. A wavy line above the staff indicates a breath mark.

Handwritten musical notation for measure 24. The staff is in treble clef with a key signature of one sharp (F#). The notation includes notes with stems, some beamed together, and a final chord with a circled measure number 24. A wavy line above the staff indicates a breath mark.

Handwritten musical notation for measure 25. The staff is in treble clef with a key signature of one sharp (F#). The notation includes notes with stems, some beamed together, and a final chord with a circled measure number 25. A wavy line above the staff indicates a breath mark.

Handwritten musical notation for measure 26. The staff is in treble clef with a key signature of one sharp (F#). The notation includes notes with stems, some beamed together, and a final chord with a circled measure number 26. A wavy line above the staff indicates a breath mark.

Handwritten musical notation for measure 27. The staff is in treble clef with a key signature of one sharp (F#). The notation includes notes with stems, some beamed together, and a final chord with a circled measure number 27. A wavy line above the staff indicates a breath mark. The word "attacca" is written below the staff with an arrow pointing to the right.

kleine
Trommel

Tempo

kl.
Tr.
Pauke

sempre crescendo — (777 bis 26)

Handwritten musical score for measures 23-25. The score includes staves for 3TR, 4H, 4Pos, 2Tuba, and Pk. TR. / Pauke. The key signature is one sharp (F#), and the time signature is 2/4. Measure 23 is circled with the number 23. The notation includes various rhythmic values, accidentals, and dynamic markings such as *ff*.

Handwritten musical score for measures 26-28. The score includes staves for 3TR, 4H, 4Pos, 2Tuba, and Pk. TR. / Pauke. The key signature is one sharp (F#), and the time signature is 2/4. Measure 27 is circled with the number 27. The notation includes various rhythmic values, accidentals, and dynamic markings such as *ff*.

27

(im Tempo noch mehr vorwärts-drängen →)

(bei Wiederholung ad. lib.) 3 Flöten dazu) waschte wie Oboen - nur Oktave höher

Fl. 3

Fl. 2

Fl. 1

Cl. Bb

Cl. G

Fag.

Fag.

Trom. I/IV

Trom. II/III

Cb

unisono

vass.

vass.

ganzer Blech sehr stark (und wie einem Chor)



Handwritten musical score for a large orchestra, consisting of 12 staves. The score is divided into three measures by vertical bar lines. The notation includes various notes, rests, and dynamic markings. The first measure contains several staves with notes and rests. The second measure continues the notation. The third measure concludes with a double bar line and repeat dots. The notation is dense and includes many accidentals and slurs.

29

30

23 $\text{C} \frac{3}{4}$ $\text{C} \frac{3}{4}$

23 $\text{C} \frac{3}{4}$ $\text{C} \frac{3}{4}$

23 $\text{C} \frac{3}{4}$ $\text{C} \frac{3}{4}$

23 $\text{C} \frac{3}{4}$ $\text{C} \frac{3}{4}$

23 $\text{C} \frac{3}{4}$ $\text{C} \frac{3}{4}$

23 $\text{C} \frac{3}{4}$ $\text{C} \frac{3}{4}$

23 $\text{C} \frac{3}{4}$ $\text{C} \frac{3}{4}$

23 $\text{C} \frac{3}{4}$ $\text{C} \frac{3}{4}$

23 $\text{C} \frac{3}{4}$ $\text{C} \frac{3}{4}$

23 $\text{C} \frac{3}{4}$ $\text{C} \frac{3}{4}$

23 $\text{C} \frac{3}{4}$ $\text{C} \frac{3}{4}$

23 $\text{C} \frac{3}{4}$ $\text{C} \frac{3}{4}$

23 $\text{C} \frac{3}{4}$ $\text{C} \frac{3}{4}$

(lange halten)

ADAGIO

oder lange ~~7777~~ halten

G.P.

Perantra

Pauke

ADAGIO

nochmal (letzter Takt)
mit (Solo Pauke)

große
G.P.

Teil III.

(Sehr langsam) ruhig

Flöte Solo $\frac{4}{4}$ pp

Solo Klarinette (in B)

pp

Handwritten musical notation for measure 33. It features a treble clef, a key signature of one sharp (F#), and a common time signature (C). The notation includes a long, sweeping slur over a series of notes, with a dynamic marking of *pp* at the end. A circled number '33' is in the top right corner.

Handwritten musical notation for measure 34. It features a treble clef, a key signature of one sharp (F#), and a common time signature (C). The notation includes a long, sweeping slur over a series of notes, with a dynamic marking of *ppp* at the beginning and end. A circled number '34' is in the top right corner.

(SO LANGSAM WIE MÖGLICH ———)

Handwritten musical notation for measure 35, showing a full orchestral score. The instruments listed are 3TR (3 Trumpets), 4H (4 Horns), 4P (4 Trombones), 2T (2 Tenors), and Pauke (Drum). The notation includes various dynamics such as *ppp*, *pp*, and *ppp*, and includes the instruction "(dampf)" for the drum. A circled number '35' is in the top right corner.

SO RUHIG ALS MÖGLICH AUSKLINGEN (Teil 3.)

Flöte (ALZ FLÖTE) *glockig notiert* (neum keine Alt Fl.) verbunden - 3 Flöten umsono (pp)

sehr solo.

VIBR. *pp* (Pedal bis \boxtimes)

Pauke *pppp (dumpf)*

36

lange ausklingen. 37

(größtes mitend.)

1966 (Wien August)
Adolf Scherbaum