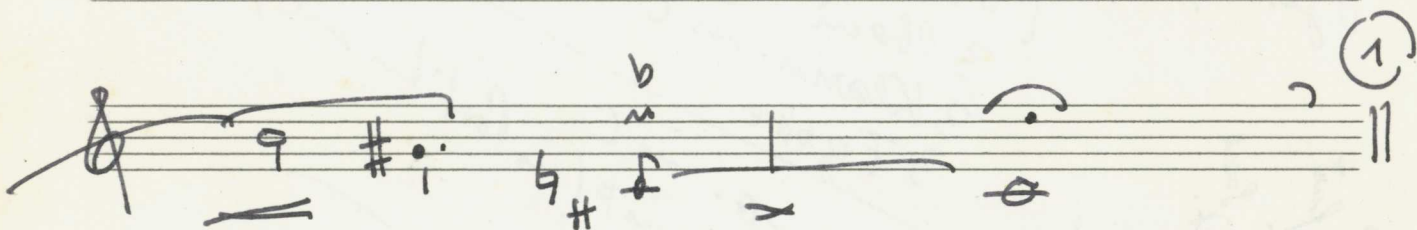
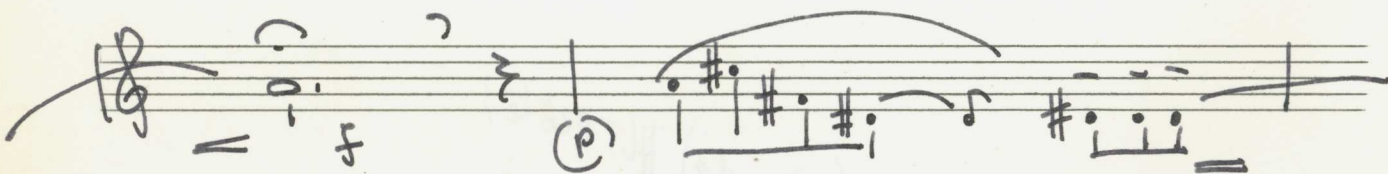




Teil I.

Solo Flöte (sehr langsam)



Handwritten musical notation for a string section. The staff shows a melodic line starting with a *pp* dynamic marking, followed by a long slur covering several measures. The notes include sharps and naturals. The piece ends with a *pp* dynamic marking and a fermata. Below the staff, there is a double bar line with a sharp sign (#) underneath it.

VIBRAPHON (mit VIBR.)

pp 4

(Pedal - bis ☒ (mit äußerster Ruhe - jeden Ton bewusst ausschlagen))

Handwritten musical notation for Vibraphone. The staff is in 4/4 time and starts with a *pp* dynamic marking. The notes are marked with accents (^) and slurs. Below the staff, there is a performance instruction: "(Pedal - bis ☒ (mit äußerster Ruhe - jeden Ton bewusst ausschlagen))".

Handwritten musical notation for a string section. The staff shows a melodic line with slurs and accents (^) over several notes.

Handwritten musical notation for a string section. A measure is highlighted with a box containing the number "4".

Handwritten musical notation for a string section. The staff ends with a boxed number "5".

Handwritten musical notation for a string section. The staff ends with a boxed number "6" and a double bar line with a sharp sign (#) underneath it.

9 (wieder doppelt so langsam)

10

ppp

11

(wieder auf sehr langsame 4)

Pauze

pppp

ottava subito fff

Teil II.

Presto (*ff subito*) *haltig - bewegt.* (oder *sympfonisch + stark.*)

3 Tromp. in C a3

4 Hörner in C a4
notiert

4 Posunen a4

2 Tuba a2

Pauken ff

sehr starke Einsätze -

(*hört.*)

①

Handwritten musical score for the first system. The upper staff contains a melody with notes and accidentals. The lower staves (piano accompaniment) feature chords with accidentals and a rhythmic pattern of eighth notes.

②

Handwritten musical score for the second system. The upper staff continues the melody. The lower staves show sustained chords and a rhythmic pattern of eighth notes.

Handwritten musical score for the first system, consisting of five staves. The notation includes various notes, rests, and dynamic markings. The first staff has a dynamic marking of mf . The second and third staves have a dynamic marking of mf . The fourth staff has a dynamic marking of mf . The fifth staff has a dynamic marking of mf . The score is divided into two measures by a vertical bar line.

Handwritten musical score for the second system, consisting of five staves. The notation includes various notes, rests, and dynamic markings. The first staff has a dynamic marking of mf . The second and third staves have a dynamic marking of mf . The fourth staff has a dynamic marking of mf . The fifth staff has a dynamic marking of mf . The score is divided into two measures by a vertical bar line. A circled number 3 is written at the end of the first staff in the second measure.

3 Fl. $\text{a3 } \text{G} \text{|||}$

3 OB $\text{a3 } \text{|||}$

3 Klar. in C $\text{a3 } \text{|||}$

3 Fg $\text{a3 } \text{|||}$

3 TR |||

4 H $\text{a4 } \text{|||}$ [erster - sehr stark beworbener Einsatz des ganzen Orchesters, b8]

4 Po $\text{a4 } \text{|||}$

2 Tub $\text{a2 } \text{|||}$

1 V |||

2 V |||

Br |||

GrB $\text{a2 } \text{|||}$

Pauke |||

4

5

3TR

4H.

4Pos

2Tub

Pauke

6

Pauke Solo

7

Pauke Solo

8

(sehr leichten Streicher-Einsatz)

1 Viol.

2 Viol

Br

CHB

9

Handwritten musical score for a large orchestra, featuring woodwinds, strings, and brass.

Woodwinds: Flute (Fl.), Oboe (Ob.), Clarinet (Cl.), Bassoon (Fag.).

Strings: Violin I (1), Violin II (2), Viola (Br.), Cello (Cb.).

Brass: Trumpet (Tromp.), Trombone (Tromb.).

Tempo/Character: *Holz - sehr solistisch hervor* (Woodwinds - very soloistic prominent)

String Performance: *alle Streicher glasaltes Tremolo* (all strings glassy tremolo)

Measure Numbers: 93, 94, 95, 96, 97, 98, 99, 100, 101, 102, 103, 104, 105, 106, 107, 108, 109, 110, 111, 112, 113, 114, 115, 116, 117, 118, 119, 120, 121, 122, 123, 124, 125, 126, 127, 128, 129, 130, 131, 132, 133, 134, 135, 136, 137, 138, 139, 140, 141, 142, 143, 144, 145, 146, 147, 148, 149, 150, 151, 152, 153, 154, 155, 156, 157, 158, 159, 160, 161, 162, 163, 164, 165, 166, 167, 168, 169, 170, 171, 172, 173, 174, 175, 176, 177, 178, 179, 180, 181, 182, 183, 184, 185, 186, 187, 188, 189, 190, 191, 192, 193, 194, 195, 196, 197, 198, 199, 200.

Key Signature: Two sharps (F# and C#).

Time Signature: 4/4.

Notes: The score contains various musical notations including notes, rests, slurs, and dynamic markings. The woodwind parts are highly melodic and prominent, while the strings provide a shimmering tremolo accompaniment.

Handwritten musical notation at the top of the page, including a treble clef, a key signature of one sharp (F#), and various rhythmic markings and notes.

Handwritten musical notation on the first staff, featuring a treble clef, a key signature of one sharp, and notes with stems.

Handwritten musical notation on the second staff, featuring a treble clef, a key signature of one sharp, and notes with stems.

Handwritten musical notation on the third staff, featuring a treble clef, a key signature of one sharp, and notes with stems.

Handwritten musical notation on the fourth staff, consisting of horizontal lines with dots, possibly representing a specific rhythmic pattern or a simplified notation.

Handwritten musical notation on the fifth staff, consisting of horizontal lines with dots.

Handwritten musical notation on the sixth staff, consisting of horizontal lines with dots.

Handwritten musical notation on the seventh staff, featuring a treble clef, a key signature of one sharp, and notes with stems.

Handwritten musical notation on the eighth staff, featuring a treble clef, a key signature of one sharp, and notes with stems.

Handwritten musical notation on the ninth staff, featuring a treble clef, a key signature of one sharp, and notes with stems.

Handwritten musical notation on the tenth staff, featuring a treble clef, a key signature of one sharp, and notes with stems.

Handwritten musical notation on the eleventh staff, featuring a treble clef, a key signature of one sharp, and notes with stems.

Handwritten musical notation at the bottom of the page, including a treble clef, a key signature of one sharp, and notes with stems.

Pomke Solo

(11)

A single musical staff for a solo part. It begins with a treble clef, a key signature of one sharp (F#), and a common time signature (C). The notation consists of a series of eighth and sixteenth notes, with some notes beamed together. There are several accidentals (sharps and naturals) throughout the piece.

A multi-staff orchestral score for the solo. The staves are labeled on the left as follows: 1r. (First Violin), 2r. (Second Violin), Br. (Trumpet), Celli (Cello), and Baß (Bass). The score is written in a common time signature (C) with a key signature of one sharp (F#). The notation includes various rhythmic values, accidentals, and dynamic markings. The 1r. and 2r. staves have a treble clef, while the Br., Celli, and Baß staves have a bass clef. The music is characterized by long, sustained notes and some complex rhythmic patterns.

Handwritten musical score for five staves, numbered 12 and 13. The score includes various musical notations such as clefs, notes, and brackets. The text "letzten 3 Takte" and "nochmals" is written in the middle of the staves.

sempre crescendo — bis 14

93

(mit Picc.)

14

3Fl. 93 ppp

3OB. 93 ppp (subito ppp) sempre crescendo →

3Kl. 93 ppp

3Fg 93 ppp

Pauke
kl.
Trommel ppp (distes Tremolo)

Handwritten musical score for the first system, consisting of five staves. The notation includes complex chords, dynamics (e.g., *f*), and articulation marks. The first staff has a treble clef and contains a series of notes with stems. The second and third staves have alto clefs and contain sustained notes with dynamic markings. The fourth staff has a bass clef and contains a melodic line with notes and stems. The fifth staff has a bass clef and contains a bass line with notes and stems. The system is divided into two measures by a vertical bar line.

Handwritten musical score for the second system, consisting of five staves. The notation includes complex chords, dynamics (e.g., *f*), and articulation marks. The first staff has a treble clef and contains a series of notes with stems. The second and third staves have alto clefs and contain sustained notes with dynamic markings. The fourth staff has a bass clef and contains a melodic line with notes and stems. The fifth staff has a bass clef and contains a bass line with notes and stems. The system is divided into two measures by a vertical bar line. A circled number "25" is visible on the right side of the page.

Vibraphon [sehr solistisch — sempre **fff**]

15

Pedal bis

16

17

Handwritten musical notation on a five-line staff, featuring a treble clef and a series of notes with stems and beams, including some triplets and accidentals.

Handwritten musical notation on a five-line staff, featuring a treble clef and a series of notes with stems and beams, including some triplets and accidentals.

Handwritten musical notation on a five-line staff, featuring a treble clef and a series of notes with stems and beams, including some triplets and accidentals. A circled number "18" is at the end.

Handwritten musical notation on a five-line staff, featuring a treble clef and a series of notes with stems and beams, including some triplets and accidentals. A circled number "19" is at the end.

Handwritten musical notation on a five-line staff, featuring a treble clef and a series of notes with stems and beams, including some triplets and accidentals. A circled number "20" is at the end.

(21)

3 Flöten ff ppp

Soban ff ppp

VIBR. ppp $\text{Ped. bis } \times$

Solo Violine ff flammenenden Ton

(22)

Solo Viol. ff ad lib

ad lib

Handwritten musical notation for measure 23. The staff is in treble clef with a key signature of one sharp (F#). The notation includes a series of notes and rests, with a fermata over the final chord. The measure number 23 is circled at the end.

Handwritten musical notation for measure 24. The staff is in treble clef with a key signature of one sharp (F#). The notation includes a series of notes and rests, with a fermata over the final chord. The measure number 24 is circled at the end.

Handwritten musical notation for measure 25. The staff is in treble clef with a key signature of one sharp (F#). The notation includes a series of notes and rests, with a fermata over the final chord. The measure number 25 is circled at the end.

Handwritten musical notation for measure 26. The staff is in treble clef with a key signature of one sharp (F#). The notation includes a series of notes and rests, with a fermata over the final chord. The measure number 26 is circled at the end.

Handwritten musical notation for measure 27. The staff is in treble clef with a key signature of one sharp (F#). The notation includes a series of notes and rests, with a fermata over the final chord. The measure number 27 is circled at the end. Below the staff, the word "attacca" is written with an arrow pointing to the right.

kleine Trommel *Tempo*

sel. Tr.
Pauhe

sempre crescendo — (77 bis 26)

Handwritten musical score for measures 26-27. The score includes parts for 3TR., 4H., 4Pos., 2Tuba, and Kb. TR. / Pauke. Measure 26 is circled with the number 26. The music features complex rhythmic patterns and accidentals.

Handwritten musical score for measures 27-28. Measure 27 is circled with the number 27. The score continues with complex rhythmic patterns and accidentals, including a double bar line in the tuba part.

27

(im Tempo noch mehr vorwärts-drängen →)

(bei Wiederholung ad. lib.) 3 Flöten dazu) dasselbe wie Oboen - nur Oktave höher

Fl. 1 (a3)

Fl. 2 (a3) unisono

Oboe 1 (a3)

Oboe 2 (a3)

Bassoon (a2)

Clarinet in Bb (a2)

Trombone I (IV)

Trombone II (2V)

Trombone III (Br)

CTB (a2)

33 25 2 33 25

24



Handwritten musical score for a large orchestra, consisting of 12 staves. The score is organized into three measures, each containing four staves. The notation includes various notes, rests, and dynamic markings. The first measure shows a complex melodic line in the fifth staff, while the other staves in each measure contain rests or simple harmonic accompaniment. The notation is dense and includes many accidentals and slurs.

ADAGIO

nochmal (letzter Takt)
mit (Solo Pause)

große
G.P.

Teil III.

(Sehr langsam) ruhig

Flöte Solo $\frac{4}{4}$ *pp*

Solo Klarinette (in B)

pp

Musical staff with a long slur over the notes. The notes are: \sharp , \flat , \equiv , \equiv . The dynamic marking is *pp*. A circled number 33 is in the top right corner.

Musical staff with a long slur over the notes. The notes are: \sharp , \flat , \sharp , \sharp , \sharp , \flat , \flat , \flat , \flat . The dynamic marking is *ppp*. A circled number 34 is in the top right corner.

(SO LANGSAM WIE MÖGLICH)

Orchestral score for measures 33-35. The instruments are: 3TR., 4H., 4P., 2T., and Pauke (dampf.). The dynamic marking is *ppp*. A circled number 35 is in the top right corner.

SO RUHIG ALS MÖGLICH AUSKLINGEN (Teil 3.)

Flöte (ALTE FLÖTE) *richtig notiert* (wenn keine Alt Fl. vorhanden - 3 Flöten unisono (pp))

VIBR. *mp* *schr. solo.* *(Pedal bis ☒)*

Pauke *ppmp (dumpf)*

36

37

lange ausklingen.

(größtes mitend.)

1966 (Wien August.)
Adolf Scherbaum