



KONZERT (1967)

für großes
Streichorchester

Adolf Scherbaum

Notenheft



16 - 1 Violin
14 - 2 Violinen
12 - Bratschen
10 - Cello
8 - Bass.

(Bei diesem Konzert
die Wiederholungen
genau einhalten
können ja in Stimmen
und kein Partitur
ausgeschrieben
werden.)

1967
L. Adolf Scherbaum

Allegro con brio

I.

Viol. 1.

Viol. 2.

Br.

Celli + Basse

2

Handwritten musical score for measures 2 and 3. The score is written on four staves. The top staff (Violin I) contains a long note with an accent (^) and a slur. The second staff (Violin II) contains a series of notes with various accidentals (sharps, flats, naturals) and slurs. The third staff (Cello/Double Bass) contains a long note with an accent (^). The bottom staff contains figured bass notation with circled numbers (62, 22) and other markings. There are also circled symbols like 'pizz' and 'ff'.

3

Handwritten musical score for measures 4 and 5. The score is written on four staves. The top staff (Violin I) contains a series of notes with slurs and accents (^). The second staff (Violin II) contains a long note with an accent (^) and a slur. The third staff (Cello/Double Bass) contains a long note with an accent (^). The bottom staff contains figured bass notation with circled numbers (62, 22) and other markings. There are also circled symbols like 'p' and 'ff'.

13 Sob

12

pizz pp

14

f

f

Handwritten musical score for a string quartet, measures 5-6. The score is written on four staves: Violin I, Violin II, Viola, and Cello/Double Bass. Measure 5 contains a complex chordal texture with various accidentals and dynamics. Measure 6 features a melodic line in the Cello/Double Bass staff with the handwritten instruction "din ...".

Handwritten musical score for a string quartet, measures 5-6. The score is written on four staves: Violin I, Violin II, Viola, and Cello/Double Bass. Measure 5 is marked with a circled "5" and the tempo marking "Allegro". Measure 6 is marked with a circled "6". The score includes various dynamics such as *p* and *f*, and features complex rhythmic patterns and accidentals across all staves.

Handwritten musical score for measures 8-9. The score consists of three staves. The top staff is in treble clef and contains a melodic line with slurs and accidentals. The middle staff is in bass clef and contains a few notes. The bottom staff is labeled 'CtB' and contains a bass line with slurs and accidentals.

Handwritten musical score for measures 10-11. The score consists of four staves. The top two staves are in treble clef and contain melodic lines with slurs and dynamics like 'p'. The third staff is in bass clef and contains a bass line with a dynamic 'fp'. The bottom staff is labeled 'CtB' and contains a bass line with slurs and dynamics like 'p' and 'a2'.

9

hoor stark.

10

Violin I: $\text{G} \text{A} \text{B} \text{C} \text{D} \text{E} \text{F} \text{G}$ (with sharp signs)

Violin II: $\text{G} \text{A} \text{B} \text{C} \text{D} \text{E} \text{F} \text{G}$ (with sharp signs)

Viola: $\text{G} \text{A} \text{B} \text{C} \text{D} \text{E} \text{F} \text{G}$ (with sharp signs)

Cello/Double Bass: $\text{G} \text{A} \text{B} \text{C} \text{D} \text{E} \text{F} \text{G}$ (with sharp signs)

Measure 10 annotation: \updownarrow unis \rightarrow

11

Violin I: $\text{G} \text{A} \text{B} \text{C} \text{D} \text{E} \text{F} \text{G}$ (with sharp signs)

Violin II: $\text{G} \text{A} \text{B} \text{C} \text{D} \text{E} \text{F} \text{G}$ (with sharp signs)

Viola: $\text{G} \text{A} \text{B} \text{C} \text{D} \text{E} \text{F} \text{G}$ (with sharp signs)

Cello/Double Bass: $\text{G} \text{A} \text{B} \text{C} \text{D} \text{E} \text{F} \text{G}$ (with sharp signs)

Measure 12 annotation: (92)

ClB

Handwritten musical score for measures 12-14. The score is written on four staves. The top staff is in treble clef with a 4/4 time signature. The second and third staves are empty. The bottom staff is in bass clef and contains a circled '62' and a key signature of one sharp (F#). The music consists of chords and melodic lines with accents and slurs.

ClB

Handwritten musical score for measures 15-17. The score is written on four staves. The top staff is in treble clef. The second and third staves contain chords and melodic lines with slurs. The bottom staff is in bass clef and contains a circled '92' and a key signature of one sharp (F#).

13

Solo (am)

Solo Solo

sub 6

14

Handwritten musical score for the first system, featuring four staves: Violin I, Violin II, Viola, and Cello/Double Bass. The tempo marking "alle" is circled at the top left. The Violin I staff begins with a circled sharp sign (#). The Cello/Double Bass staff includes circled markings for "pizz" (pizzicato) and "a2" (second position).

Handwritten musical score for the second system, continuing the four staves. A circled number "15" is located at the top right of the system. The Cello/Double Bass staff features a circled "a2" marking and a circled "b." (basso) marking.

15

16

17

> dir ... > > (p) >

92

Solo

Handwritten musical score for the first system, featuring a solo line in the treble clef and three empty bass clef staves. The solo line includes notes, slurs, and dynamic markings such as *p*.

Handwritten musical score for the second system, featuring a melodic line in the treble clef and three empty bass clef staves. The solo line includes notes, slurs, and dynamic markings such as *mf*, *fff*, and *dim*. A circled **18** is present at the end of the first measure. Handwritten annotations in the lower staves include *(poco rit....)* and *(2te + grosses rit... + dim.)*.

98 so langsam und ruhig wie möglich

ADagio (auf 6)
(wie ein Hauch)

(auf 4)

Handwritten musical score for the first system, measures 98-102. The score is written for Violin (Vl.), Viola (Vla.), Cello (Cb), and Double Bass (D.B.). The key signature is one flat (B-flat major/D minor) and the time signature is 4/4. The tempo and mood are indicated as "so langsam und ruhig wie möglich" and "wie ein Hauch". The first measure (98) features a half note G4 in the Cello part. The second measure (99) is marked "solo" and contains a melodic line in the Cello part starting on G4, with dynamics "pp" and "f". The third measure (100) continues the melodic line with dynamics "f" and "zart". The fourth measure (101) continues the melodic line with dynamics "f" and "zart". The fifth measure (102) concludes the phrase with dynamics "f" and "zart".

Handwritten musical score for the second system, measures 103-107. The score is written for Violin (Vl.), Viola (Vla.), Cello (Cb), and Double Bass (D.B.). The key signature is one flat (B-flat major/D minor) and the time signature is 4/4. The first measure (103) features a half note G4 in the Cello part. The second measure (104) continues the melodic line in the Cello part with dynamics "f" and "zart". The third measure (105) continues the melodic line with dynamics "f" and "zart". The fourth measure (106) continues the melodic line with dynamics "f" and "zart". The fifth measure (107) concludes the phrase with dynamics "f" and "zart".

Handwritten musical score for measures 18-20. The score is written on four staves with a 6/4 time signature. The instruments are Violin I (V1), Violin II (V2), Viola (V), and Cello/Double Bass (CB). Measure 19 is circled. The music features various dynamics including *pp* and *ppp*, and includes performance instructions such as *dim*, *BR. SOLO*, and *P*. There are also some handwritten notes like "a2." and "pp" in circles. The notation includes notes with stems, beams, and slurs, as well as some rhythmic markings like triplets.

Handwritten musical score for measures 20-22. The score is written on four staves. Measure 20 is boxed. The instruments are Violin I (V1), Violin II (V2), Viola (V), and Cello/Double Bass (CB). The music continues with various dynamics including *pp*, *ppp*, and *P*. There are also some handwritten notes like "a2." and "pp" in circles. The notation includes notes with stems, beams, and slurs, as well as some rhythmic markings like triplets.

Handwritten musical score for four staves. The notation includes notes, rests, and dynamic markings. The first staff is marked with *ppp* and *alle*. The second staff is marked with *ppp* and *alle*. The third staff is marked with *ppp* and *alle*. The fourth staff is marked with *ppp* and *alle*. The score is written in a key signature of one sharp (F#) and a 4/4 time signature. The notation includes various note values, rests, and articulation marks. The word "alle" is circled in each staff. The number "92" is circled in the first and fourth staves. The word "sub 6" is written above the first staff. The score is written in a cursive, handwritten style.

Empty musical staves for the lower part of the page.

A page of musical manuscript paper, aged and yellowed. It features ten systems of five staves each, arranged vertically. The paper is marked with faint pencil sketches, including a grid and some illegible text or notes. The staves are empty of musical notation.

Sehr breit - ausladend II.

Handwritten musical score for the first system, featuring four staves. The top staff contains notes with accidentals (flats and naturals) and a circled '4'. The second staff has a treble clef, a 4/4 time signature, and notes with a circled '4'. The third staff is mostly empty with a circled '4'. The bottom staff has a bass clef, a 4/4 time signature, and notes with a circled '4' and a circled '1122'. A circled '4' is also present in the left margin.

Handwritten musical score for the second system, featuring four staves. The top staff has notes with accidentals and a circled '2'. The second staff has notes with a circled '2'. The third staff has notes with a circled '2'. The bottom staff has notes with a circled '2' and a circled '4'. A circled '2' is also present in the right margin.

3

Handwritten musical score for measures 3-4. The top staff is in treble clef, showing a long melodic line with accents (^) and various accidentals (sharps, flats, naturals). The middle staff is in bass clef, showing a rhythmic accompaniment with notes and rests. The bottom staff contains guitar-like notation (TAB) with circled numbers (e.g., 2, 1, 2) and a circled 'pizz' marking.

4

Handwritten musical score for measures 5-6. The top staff is in treble clef, showing a melodic line that ends with a double bar line. The middle staff is in bass clef, showing a melodic line with a double bar line. The bottom staff contains guitar-like notation (TAB) with circled numbers (e.g., 2, 1, 2) and markings like 'arco' and 'dim... pp'.

(4)

Solo Violin - ~~Violin~~ Zeichen nur für Solo!

Solo Viol.

C+B

Pizz

Handwritten musical notation for measures 4 and 5. The system includes a Violin staff and a Cello/Bass staff. The Violin staff has a treble clef and a 6/8 time signature. The Cello/Bass staff has a bass clef and a 4/4 time signature. The Violin staff contains notes with various dynamics (p, pp) and articulation marks (accents, slurs). The Cello/Bass staff contains a series of quarter notes with 'pizz' markings.

Handwritten musical notation for measures 6 and 7. The system includes a Violin staff and a Cello/Bass staff. The Violin staff has a treble clef and a 6/8 time signature. The Cello/Bass staff has a bass clef and a 4/4 time signature. The Violin staff contains notes with dynamics (ffp, pp) and articulation marks (accents, slurs). The Cello/Bass staff contains a series of quarter notes with 'pizz' markings.

Handwritten musical notation for measures 8 and 9. The system includes a Violin staff and a Cello/Bass staff. The Violin staff has a treble clef and a 6/8 time signature. The Cello/Bass staff has a bass clef and a 4/4 time signature. The Violin staff contains notes with dynamics (p) and articulation marks (accents, slurs). The Cello/Bass staff contains a series of quarter notes with 'pizz' markings.

Handwritten musical notation for measures 10 and 11. The system includes a Violin staff and a Cello/Bass staff. The Violin staff has a treble clef and a 6/8 time signature. The Cello/Bass staff has a bass clef and a 4/4 time signature. The Violin staff contains notes with dynamics (p, pp) and articulation marks (accents, slurs). The Cello/Bass staff contains a series of quarter notes with 'pizz' markings.

Handwritten musical score for measures 7 and 8. The system consists of two staves. The upper staff is in treble clef with a 4/4 time signature. The lower staff is in bass clef. Measure 7 is marked with a circled '7' and contains a circled 'P' dynamic marking. Measure 8 is marked with a circled '8' and contains a circled 'f' dynamic marking. The notation includes various notes, rests, and accidentals, with some notes marked with accents (^).

Handwritten musical score for measures 9 and 10. The system consists of two staves. The upper staff is in treble clef. The lower staff is in bass clef. Measure 9 is marked with a circled '9' and contains a circled 'p' dynamic marking. Measure 10 is marked with a circled '10' and contains a circled 'f' dynamic marking. The notation includes various notes, rests, and accidentals, with some notes marked with accents (^).

Handwritten musical score for measures 11 and 12. The system consists of two staves. The upper staff is in treble clef. The lower staff is in bass clef. Measure 11 is marked with a circled '11' and contains a circled 'p' dynamic marking. Measure 12 is marked with a circled '12' and contains a circled 'f' dynamic marking. The notation includes various notes, rests, and accidentals, with some notes marked with accents (^).

Handwritten musical score for measures 13 and 14. The system consists of two staves. The upper staff is in treble clef. The lower staff is in bass clef. Measure 13 is marked with a circled '13' and contains a circled 'p' dynamic marking. Measure 14 is marked with a circled '14' and contains a circled 'f' dynamic marking. The notation includes various notes, rests, and accidentals, with some notes marked with accents (^).

9

breit

CHB (62)

hart)

10

allegro

11

12

13

↳ (H) härtestes staccato. ↳

Solo
frei
gröntes pit..
und drinn..
lange
ppp
 12

**Sehr
Breit**

1r.
2r.
Br.
CB
alle
gut..
lange halten.
 12

13 Auf (b flüchtig) ausspielen (halten) 14

Handwritten musical score for measures 13-14. The score is for four staves: Violin I (V1), Violin II (V2), Viola (B), and Cello/Double Bass (GB). The music is in 4/4 time with a key signature of one sharp (F#). Measure 13 contains a whole note chord with notes G4, B4, D5, and F#5. Measure 14 contains a whole note chord with notes G4, B4, D5, and F#5. Dynamics include ppp and accents. Handwritten notes include "nie einhauch" and "P, DES, BE, I".

Handwritten musical score for measures 15-16. The score is for four staves: Violin I (V1), Violin II (V2), Viola (B), and Cello/Double Bass (GB). The music is in 4/4 time with a key signature of one sharp (F#). Measure 15 contains a half note chord with notes G4, B4, D5, and F#5. Measure 16 contains a half note chord with notes G4, B4, D5, and F#5. Dynamics include ppp and accents. Handwritten notes include "subito (F#) Breit" and "Solo Violine (sehr ruhig)".

Solo

ppp

ppp

Solo

CTB

16

alle

alle

alle

Solocello

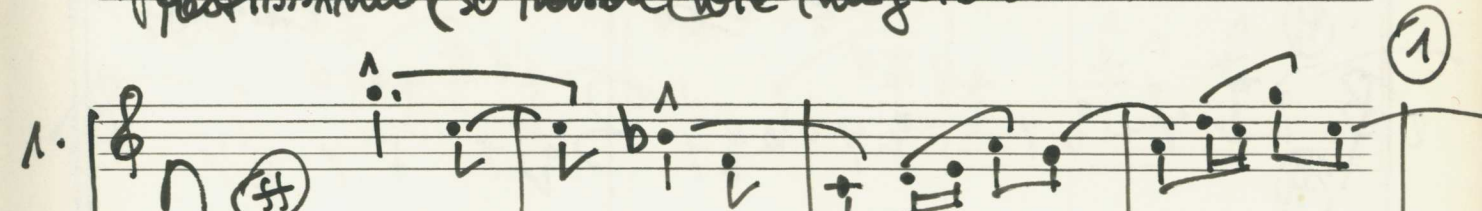
pp

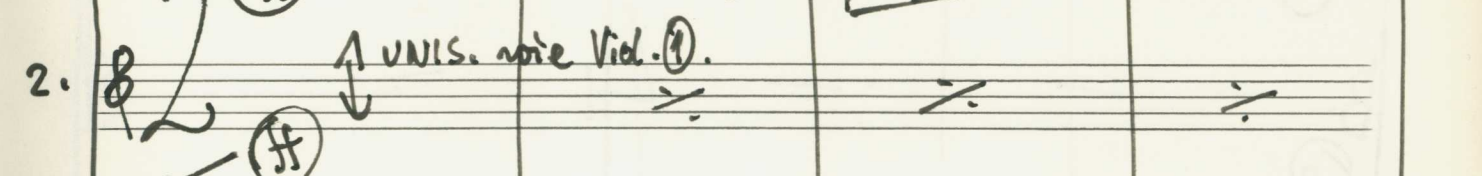
f

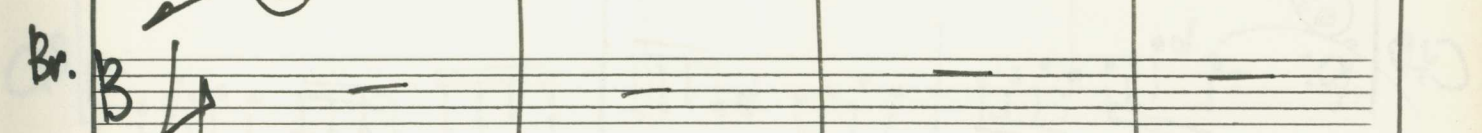
CTB


III.

Fortissimo (so rasch wie möglich)

1. 

2. 

Br. 

GtB 







GtB 

(2)

(3)

(4)

5

Handwritten musical score for measures 5-7. The notation includes complex chords with accidentals (flats and naturals) and various articulation marks like accents and slurs. The first staff has a sequence of notes with slurs and accents, while the second staff has chords with slurs and accents. The bottom two staves are empty.

6

Handwritten musical score for measures 8-10. The notation includes complex chords with accidentals and various articulation marks like accents and slurs. The first staff has a sequence of notes with slurs and accents, while the second staff has chords with slurs and accents. The bottom two staves have chords with slurs and accents.

Handwritten musical score for the first system, featuring four staves. The notation includes various notes, rests, and dynamics. A circled measure number '9' is present at the end of the first staff. The word 'cres.' is written below the first staff. The bottom staff is marked with a circled '42' and a circled '9'.

Handwritten musical score for the second system, featuring four staves. The notation includes various notes, rests, and dynamics. A circled measure number '10' is present at the end of the first staff. The word 'f' is written below the first staff. The bottom staff is marked with a circled '42' and a circled '11'.

11

(sehr solistisch)

Handwritten musical score for measures 11-13. Measure 11 is circled and labeled "(sehr solistisch)". The first staff has a circled "4". The score is for a string quartet with staves for Violin I, Violin II, Viola, and Cello/Double Bass.

12

Handwritten musical score for measures 12-14. Measure 12 is circled and labeled "12". The word "talle" is written above the first staff. The score continues for the string quartet. There are circled "92" and "94" in the Cello/Double Bass staff.

13

alle D.C.

Handwritten musical score for a vocal line and piano accompaniment. The vocal line is in treble clef with lyrics "din > din." and a circled "p". The piano accompaniment includes treble, bass, and grand staff staves with various notes, rests, and dynamics like "p" and "pp". There are circled numbers 42 and 43.

44

Solo Viol.

Handwritten musical score for a solo violin part. It features a treble clef staff with notes, rests, and dynamics like "pp". The piano accompaniment staves (treble, bass, grand) are mostly empty with some rests. There are circled numbers 44 and 45.

14

Handwritten musical score for measures 14-16. The top staff contains a melodic line with slurs and accents, marked with circled 'p' and 'f' dynamics. The bottom three staves (violin, viola, and cello) are mostly empty with some horizontal lines.

15

16

Handwritten musical score for measures 16-18. The top staff is marked "Solo" and contains a melodic line with slurs and accents, marked with circled "p" and "f" dynamics. The middle three staves (violin, viola, and cello) contain accompaniment with slurs and accents, marked with circled "p" dynamics.

Cello

Handwritten musical score for measures 16 and 17. The system includes four staves: Violin I (circled 16), Violin II (circled 17), Viola, and Cello/Double Bass (circled 16). The music is in 2/4 time and features a melodic line in the Violin I part with various ornaments and slurs. The lower strings play sustained notes.

Handwritten musical score for measures 18 and 19. The system includes four staves: Violin I (circled 18), Violin II (circled 19), Viola (circled 19), and Cello/Double Bass (circled 18). The Violin I part continues with a melodic line. The Violin II and Viola parts feature sustained chords with slurs. The Cello/Double Bass part has sustained notes.

18 Solo

25

Handwritten musical score for Solo, measures 18-25. The score is written for four staves: Violin I (V1), Violin II (V2), Viola (V), and Cello/Double Bass (C/B). The music is in G major and 4/8 time. The V1 staff has notes with accents and a 'hart.' marking. The V2 staff has notes with accents. The V staff has notes with accents. The C/B staff has notes with accents and a circled '92'.

26

Handwritten musical score for measures 26-30. The score is written for four staves: Violin I (V1), Violin II (V2), Viola (V), and Cello/Double Bass (C/B). The music is in G major and 4/8 time. The V1 staff has notes with accents and a circled '92'. The V2 staff has notes with accents and a circled '92'. The V staff has notes with accents and a circled '92'. The C/B staff has notes with accents and a circled '92'. There are dynamic markings like 'breit', 'gr. rit...', 'gröÙ. rit.', and 'pp'. There are also tempo markings like '4/8'.

20 subito Tempo I.

21

alle

V1

V2

V

CtB

hart stacc.)

22

V1

V2

V

CtB

Handwritten musical score for measures 22-23. The score is written on four staves. The top staff is in treble clef with a key signature of one sharp (F#) and a common time signature. It contains melodic lines with slurs and accents. The second and third staves are in bass clef and contain rhythmic patterns with notes and stems, marked with circled 'pizz' (pizzicato) and circled '62'. The bottom staff is in bass clef and contains a bass line with notes and stems, marked with circled 'pizz' and circled '62'. The text 'harte pizz (alle)' is written between the third and fourth staves. The right side of the page shows the continuation of the staves from the previous page.

Handwritten musical score for measures 24-25. The score is written on four staves. The top staff is in treble clef with a key signature of one sharp (F#) and a common time signature. It contains melodic lines with slurs and accents. The second and third staves are in bass clef and contain rhythmic patterns with notes and stems, marked with circled 'pizz' and circled '62'. The bottom staff is in bass clef and contains a bass line with notes and stems, marked with circled 'pizz' and circled '62'. The right side of the page shows the continuation of the staves from the previous page.

Handwritten musical score for the first system, consisting of four staves. The top staff is in treble clef with a key signature of one sharp (F#) and a common time signature (C). It contains a melodic line with various accidentals and slurs. The second and third staves are in alto clef (C4) and contain rhythmic patterns of eighth notes with stems pointing up and down. The bottom staff is in bass clef and contains rhythmic patterns of eighth notes with stems pointing up and down. A circled number '62' is written in the left margin next to the bottom staff.

Handwritten musical score for the second system, also consisting of four staves. The notation is similar to the first system, with a melodic line in the top staff and rhythmic patterns in the lower staves. A circled number '25' is written in the right margin next to the top staff. A circled number '62' is written in the left margin next to the bottom staff.

25

26

27

Handwritten musical score for the first system, featuring three staves:

- Top Staff:** Treble clef, 2/4 time signature. Contains a melodic line with notes and rests, marked with *mp* and a circled *pp*.
- Middle Staff:** Bass clef, contains rests.
- Bottom Staff:** Treble clef, marked *GB* and *p*. Contains a rhythmic pattern of eighth notes with stems, marked with circled *92*, circled *pp*, and *pizz*.

(28)

Handwritten musical score for the second system, featuring three staves:

- Top Staff:** Treble clef, 2/4 time signature. Contains a melodic line with notes and rests, marked with circled *pp* and circled *ppp*.
- Middle Staff:** Bass clef, contains rests.
- Bottom Staff:** Treble clef, marked *GA* and *p*. Contains a rhythmic pattern of eighth notes with stems, marked with circled *92*, circled *ff*, and circled *ff*. The system concludes with a double bar line and a *D.C.* marking.

Sehr breit (ausladend)

1. $\overset{b}{i} \overset{\#}{i} \cdot \underset{i}{i} \cdot \overset{b}{i} \overset{\#}{i} \cdot \underset{i}{i} \overset{\#}{i} \overset{\#}{i}$

2. *f* $\overset{\wedge}{\circ} \circ \circ \circ \circ \circ$

Br. *f*

C.B. $\overset{\text{alle}}{\text{dura}} \overset{\text{Pizz}}{\text{sehr hart}}$
 $\overset{\text{a2}}{\circ} \underset{i}{i} \overset{b}{i} \overset{7}{i} \overset{6}{i} \underset{i}{i} \overset{b}{i} \overset{7}{i} \overset{6}{i} \underset{i}{i} \overset{b}{i} \overset{7}{i} \overset{6}{i} \underset{i}{i} \overset{b}{i} \overset{7}{i} \overset{6}{i} \underset{i}{i}$

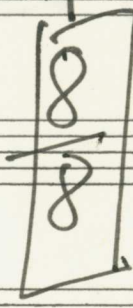
$\overset{\text{a2}}{\circ}$ $\overset{\wedge}{\overset{b}{i}} \overset{\wedge}{\overset{b}{i}} \overset{\wedge}{\overset{b}{i}} \overset{\wedge}{\overset{b}{i}}$

$\overset{\wedge}{\underset{i}{i} \overset{b}{i} \overset{7}{i} \overset{6}{i} \underset{i}{i}} \overset{\wedge}{\underset{i}{i} \overset{b}{i} \overset{7}{i} \overset{6}{i} \underset{i}{i}}$

C.B. $\overset{\text{a2}}{\circ} \underset{i}{i} \overset{b}{i} \overset{7}{i} \overset{6}{i} \underset{i}{i} \underset{i}{i} \overset{\wedge}{\underset{i}{i} \overset{b}{i} \overset{7}{i} \overset{6}{i} \underset{i}{i}}$

30

31



Solo

Violini

pp

ppp

pp

ppp

(länger halten)

ppp

CTB

Solo

gang frei gr. rit + dim. >

ppp

2/4

So rasch wie möglich (wild)

alle

1.

2.

Br.

CTB

alle

33

Handwritten musical score for measures 34 and 35. The system includes a Violin I staff with the instruction "UNIS. Viol. I.", a Bass staff, and a Cello/Double Bass staff. The music is in 2/2 time and features melodic lines with slurs and accents, and a bass line with sustained notes. Measure numbers 34 and 35 are circled at the end of each system.

Handwritten musical score for measures 36 and 37. The system includes a Violin I staff with the instruction "UNIS.", a Bass staff, and a Cello/Double Bass staff. The music continues with melodic lines and sustained bass notes. Measure numbers 36 and 37 are circled at the end of each system.

-immer mehr steigen - noch - bis -

35

1 4/4 $\text{F}^{\#}$

2 $\text{F}^{\#}$

3 $\text{F}^{\#}$

4 $\text{F}^{\#}$ $\text{C}^{\#}$

ganzant - mit waldsteigen

(ad. lib. (alle breve)

36

Handwritten musical score for four staves (Violin I, Violin II, Viola, and Cello/Double Bass). The score is divided into two systems by a double bar line. The first system contains complex rhythmic and melodic figures with various accidentals (sharps, flats, naturals) and dynamic markings. The second system features long, sustained notes with a circled 'mf' dynamic marking. A circled '37' is written at the end of the second system.

lange halten
(hart abschließen)

(trabbel) Fine

Handwritten musical score for four staves (Violin I, Violin II, Viola, and Cello/Double Bass). The score consists of a single system with sustained notes and dynamic markings. A circled 'mf' is present on the first staff. The word 'lange halten' is written across the staves. The score concludes with a large, stylized signature and the date 'Juli 1967'.