

L. V. BEETHOVEN



W. A. MOZART



NOTENHEFT



F. SCHUBERT



J. HAYDN



J. STRAUSS



~~Flöte~~ ruhig - frei gestalten

No ①

Flöte

PIANO

3/4 pp

pasante - ruhig

schreitend →

②

③

F 153 Scherbaum 331

Pedal

Pedal *ovv*

④

Handwritten musical score for measures 4, 5, and 6. Measure 4 shows a treble clef with a half note G4, a quarter note A4, and a quarter note B4. The bass clef has a half note G3, a quarter note A3, and a quarter note B3. Measure 5 has a treble clef with a half note G4 and a quarter note A4. The bass clef has a half note G3 and a quarter note A3. Measure 6 has a treble clef with a half note G4 and a quarter note A4. The bass clef has a half note G3 and a quarter note A3.

⑤

Handwritten musical score for measures 7, 8, and 9. Measure 7 shows a treble clef with a half note G4, a quarter note A4, and a quarter note B4. The bass clef has a half note G3, a quarter note A3, and a quarter note B3. Measure 8 has a treble clef with a half note G4 and a quarter note A4. The bass clef has a half note G3 and a quarter note A3. Measure 9 has a treble clef with a half note G4 and a quarter note A4. The bass clef has a half note G3 and a quarter note A3.

⑥

Handwritten musical score for measures 10, 11, and 12. Measure 10 shows a treble clef with a half note G4, a quarter note A4, and a quarter note B4. The bass clef has a half note G3, a quarter note A3, and a quarter note B3. Measure 11 has a treble clef with a half note G4 and a quarter note A4. The bass clef has a half note G3 and a quarter note A3. Measure 12 has a treble clef with a half note G4 and a quarter note A4. The bass clef has a half note G3 and a quarter note A3.

poco rit.)

breiter (frei)

percuti (appassionata)

stipem →

stipem →

← *(poco rit)*

CODA

bewegter — freibend —

accel. cresc. — bis $F\sharp$

accel. —

rasselt - bewegt
 bewegt -

13

14

noch steigern im Tempo

15

breit (frei)

Leuto

♩ COPPA (lento)

(A)

Handwritten musical notation for section A. It features a treble clef and a bass clef. The treble clef part includes notes with slurs and dynamic markings like *pp* and *frei*. The bass clef part has vertical lines representing notes, with some circled notes and dynamic markings like *pp*. A large bracket spans across both staves.

(B)

Handwritten musical notation for section B. It features a treble clef and a bass clef. The treble clef part includes notes with slurs and dynamic markings like *pp*. The bass clef part has vertical lines representing notes, with some circled notes and dynamic markings like *pp*. A large bracket spans across both staves.

(C)

Handwritten musical notation for section C. It features a treble clef and a bass clef. The treble clef part includes notes with slurs and dynamic markings like *ppp* and *Adagio*. The bass clef part has vertical lines representing notes, with some circled notes and dynamic markings like *ppp*. A large bracket spans across both staves. The word "Pedal" is written at the bottom left, and "Pedal aus" is written at the bottom right.

Flügelplate/nichtig nicht

No. 2 Satz 2

①

vielig fließend (nicht schleppend)

②

③

ff

Handwritten musical score for measures 4 and 5. The system includes a flute part and a piano accompaniment. Measure 4 features a melodic line in the flute with notes G, A, B, C, D, E, F, G, and a piano accompaniment with chords and moving lines. Measure 5 continues the melodic development with notes G, A, B, C, D, E, F, G. A circled number '4' is at the end of the system.

Handwritten musical score for measures 5 and 6. The system includes a flute part and a piano accompaniment. Measure 5 features a melodic line in the flute with notes G, A, B, C, D, E, F, G, and a piano accompaniment with chords and moving lines. Measure 6 continues the melodic development with notes G, A, B, C, D, E, F, G. A circled number '5' is at the end of the system.

Handwritten musical score for measures 6 and 7. The system includes a flute part and a piano accompaniment. Measure 6 features a melodic line in the flute with notes G, A, B, C, D, E, F, G, and a piano accompaniment with chords and moving lines. Measure 7 continues the melodic development with notes G, A, B, C, D, E, F, G. A circled number '6' is at the end of the system.

Handwritten musical score for measures 7 and 8. The system includes a flute part and a piano accompaniment. Measure 7 features a melodic line in the flute with notes G, A, B, C, D, E, F, G, and a piano accompaniment with chords and moving lines. Measure 8 continues the melodic development with notes G, A, B, C, D, E, F, G. A circled number '7' is at the end of the system. The word 'Coda' is written at the bottom right. The instruction '(poco rit)' is written at the bottom center.

Rote (frei gehalten!)

Handwritten musical notation for the first system, featuring two staves with notes, slurs, and dynamic markings like *pp* and *f*. The notation includes various rhythmic values and articulation marks.

Quell. mit (frei rubato)

Handwritten musical notation for the second system, including a piano keyboard diagram and dynamic markings. The notation shows a sequence of notes with slurs and dynamic markings like *pp*.

Handwritten musical notation for the third system, including a piano keyboard diagram and dynamic markings. The notation shows a sequence of notes with slurs and dynamic markings like *pp* and *ppp*.

♩ CODA (Lento ganz frei)

Handwritten musical notation for the CODA section, featuring a large bracketed structure and dynamic markings. The notation includes notes, slurs, and dynamic markings like *pp* and *ppp*.

Normal flöte

No.3)

Presto

①

Handwritten musical score for the first system, measures 1-6. The flute part starts with a 2/4 time signature and a 'pp' dynamic. It features a melodic line with slurs and accents, and a piano accompaniment with a 'pp' dynamic. The key signature has one flat.

②

Handwritten musical score for the second system, measures 7-12. The flute part continues with slurs and accents, and the piano accompaniment continues with a 'p' dynamic. The key signature has one flat.

③

Handwritten musical score for the third system, measures 13-18. The flute part includes a 'ff' dynamic marking and a sharp sign in the piano accompaniment. The key signature has one flat.

3

14

brillant -

5

6

Handwritten musical score for the first system. It consists of two staves: a treble staff and a bass staff. The treble staff contains several measures with notes, some marked with accents (^) and slurs. There are also some circled notes and dynamic markings like 'p'. The bass staff shows a few notes and rests. The system ends with a circled '8'.

Handwritten musical score for the second system. It includes the handwritten instruction "frei Interpretieren" (free interpretation) above the treble staff. The treble staff features a prominent wavy line, suggesting a melodic or vibrato-like passage. The bass staff has notes and rests. The system concludes with a circled '8'.

Handwritten musical score for the third system. This system is more densely notated. The treble staff has many notes, some with slurs and accents. There are several circled notes and dynamic markings, including 'p' and 'f'. The bass staff also contains notes and rests. The system ends with a circled '9' and the word "GODA" written below the staff.

Handwritten musical notation for measures 10-11. The system includes a treble clef with a key signature of one sharp (F#) and a common time signature. The notation features complex chordal textures with many accidentals and slurs. A circled measure number '10' is at the end of the system.

Handwritten musical notation for measures 11-12. The system continues with complex chordal textures. A circled measure number '11' is at the end of the system.

Handwritten musical notation for measures 12-13. The system features dense chordal textures with many accidentals. A circled measure number '12' is at the end of the system.

Handwritten musical notation for measures 13-14. The system includes a treble clef with a key signature of two sharps (F# and C#). The notation features complex chordal textures. A circled measure number '13' is at the end of the system.

Handwritten musical notation for measures 14-15. The system includes a treble clef with a key signature of two sharps (F# and C#). The notation features complex chordal textures. A circled measure number '14' is at the end of the system.

♩ CODA (Prestissimo)

Handwritten musical notation for system A. It features a grand staff with treble and bass clefs. The music includes a series of sixteenth-note runs in the right hand, with some notes marked with accents and slurs. The left hand has a few notes with slurs. A circled 'A' is at the top right.

Handwritten musical notation for system B. Similar to system A, it shows a grand staff with complex rhythmic patterns in the right hand and simpler notes in the left hand. A circled 'B' is at the top right.

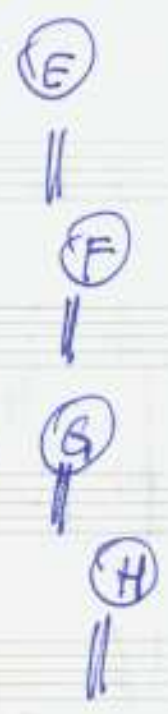
Handwritten musical notation for system C. This system shows more intricate sixteenth-note passages in the right hand, with some notes circled. The left hand has a few notes with slurs. A circled 'C' is at the top right.

Handwritten musical notation for system D. The right hand features a very dense and rapid sixteenth-note passage, with some notes circled. The left hand has a few notes with slurs. A circled 'D' is at the top right.

|| letzten 20 Takte modals

|| letzten 20 Takte modals

|| letzten 120 Takte modals



lato (zart) (s)

Prestissimo

Aug 1967 Adolf Scherbaum