

FLÖTEN-  
STIMME

# MUSIK IN 2 Teilen FÜR FLÖTE SOLO - gr. Streichorchester - Blech - Schlagzeug - 1967. Adolf Scherbaum. Vibraphon.

Sehr RUHIG - LANGSAM (7-8 Min.) Teil I. TEIL I.

*Poco rit....*

ff

dim...pp

gr. rit.....

8

9

*frei (bis 10)*

pp

mf

10

11

*molto.....*

**SEHR RUHIG**

pp

mf

12

13

*molto.....*

**SEHR RUHIG.**

pp

ff

14

15

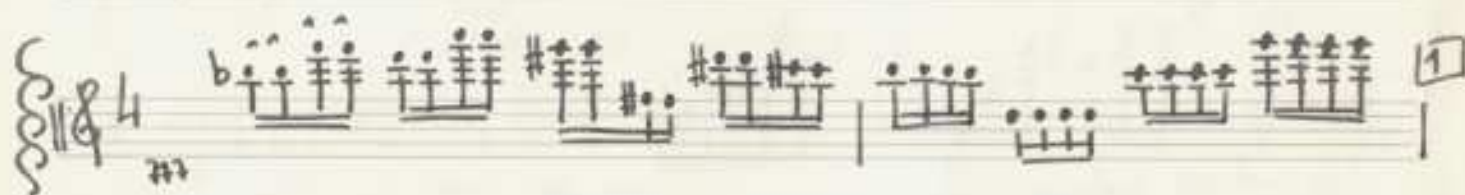
15 Sehr ruhig



FIN.

## TEIL II.

HEFTIG — RASCH





[21]

Handwritten musical notation for measure 21, featuring a treble clef, a 2/4 time signature, and a key signature of two sharps (F# and C#). The notation consists of a single whole note with a fermata.

Handwritten musical notation for measure 22, featuring a treble clef, a 2/4 time signature, and a key signature of two sharps. The notation consists of a single whole note with a fermata, a downward-pointing arrow above it, and the dynamic marking *pp* below it.

Handwritten musical notation for measure 23, featuring a treble clef, a 2/4 time signature, and a key signature of two sharps. The notation consists of a half note with a fermata, followed by a quarter note with a fermata, and another half note with a fermata. The dynamic marking *pp* is present.

Handwritten musical notation for measure 24, featuring a treble clef, a 2/4 time signature, and a key signature of two sharps. The notation consists of a half note with a fermata, followed by a quarter note with a fermata, and another half note with a fermata. The dynamic marking *pp* is present, and a *f* marking appears below the second half note.

Handwritten musical notation for measure 25, featuring a treble clef, a 3/8 time signature, and a key signature of two sharps. The notation consists of a quarter note with a fermata, followed by an eighth note with a fermata, and another quarter note with a fermata. The dynamic marking *pp* and the instruction *sempre cresc....* are present.

Handwritten musical notation for measure 26, featuring a treble clef, a 3/8 time signature, and a key signature of two sharps. The notation consists of a quarter note with a fermata, followed by an eighth note with a fermata, and another quarter note with a fermata. A wavy line is drawn below the notes.

Handwritten musical notation for measure 27, featuring a treble clef, a 3/8 time signature, and a key signature of two sharps. The notation consists of a quarter note with a fermata, followed by an eighth note with a fermata, and another quarter note with a fermata. A wavy line is drawn below the notes.

Handwritten musical notation for measure 28, featuring a treble clef, a 3/8 time signature, and a key signature of two sharps. The notation consists of a quarter note with a fermata, followed by an eighth note with a fermata, and another quarter note with a fermata. A wavy line is drawn below the notes.

Handwritten musical notation for measure 29, featuring a treble clef, a 3/8 time signature, and a key signature of two sharps. The notation consists of a quarter note with a fermata, followed by an eighth note with a fermata, and another quarter note with a fermata. A wavy line is drawn below the notes.

Handwritten musical notation for measure 30, featuring a treble clef, a 3/8 time signature, and a key signature of two sharps. The notation consists of a quarter note with a fermata, followed by an eighth note with a fermata, and another quarter note with a fermata. A wavy line is drawn below the notes.

Handwritten musical notation for measure 31, featuring a treble clef, a 3/8 time signature, and a key signature of two sharps. The notation consists of a quarter note with a fermata, followed by an eighth note with a fermata, and another quarter note with a fermata. A wavy line is drawn below the notes.

29

Handwritten musical notation for measure 29. It features a treble clef, a 4/4 time signature, and a dynamic marking of *mfz*. The staff contains a series of horizontal lines representing rests.

30

Handwritten musical notation for measures 30-31. The top staff is labeled "Springzug Solo" and contains a melodic line with slurs and accents. The bottom staff contains a bass line with chords and slurs. A wavy line at the end of the staff indicates a continuation or a specific performance instruction.

31

Handwritten musical notation for measure 32. It features a treble clef and a common time signature. The staff contains a series of chords with slurs and accents. The label "Solo" is written above the staff.

32

(day) *mfz* (Gemaas.) *soo*

Handwritten musical notation for measure 33. It features a treble clef and a common time signature. The staff contains a series of chords with slurs and accents. A dynamic marking of *mfz* is present.

33

Handwritten musical notation for measure 34. It features a treble clef and a common time signature. The staff contains a series of chords with slurs and accents.

34

Handwritten musical notation for measure 35. It features a treble clef and a common time signature. The staff contains a series of chords with slurs and accents.

Handwritten musical notation for measure 36. It features a treble clef and a common time signature. The staff contains a series of chords with slurs and accents.

Handwritten musical notation for measure 37. It features a treble clef and a common time signature. The staff contains a series of chords with slurs and accents. A dynamic marking of *mfz* is present. The staff ends with a double bar line and the word "Guss." written above it.

Handwritten musical notation for measure 38. It features a treble clef and a common time signature. The staff contains a series of chords with slurs and accents. The staff ends with a double bar line and the word "FINE." written below it.

6