

10 Stücke für
Klavier Solo // 20
Eindrücke)

(kleine alte
Kapselle)

1967 Adolf
Schubert I

Sehr langsam

steigern:

(sehr langsam)

ev. mit + dem

(Choral Klänge)
(von weit her)

II.

fest (breit)

Handwritten musical notation for the first system, including a treble clef, a common time signature, and notes with dynamic markings like *fff* and *resante*.

Handwritten musical notation for the second system, featuring a treble clef, a common time signature, and a complex chordal structure with a '3' marking.

Handwritten musical notation for the third system, showing a treble clef, a common time signature, and notes with dynamic markings.

1

Handwritten musical notation for the first system of the second row, including a treble clef and notes with dynamic markings like *pp*.

Handwritten musical notation for the second system of the second row, featuring a treble clef and notes with dynamic markings.

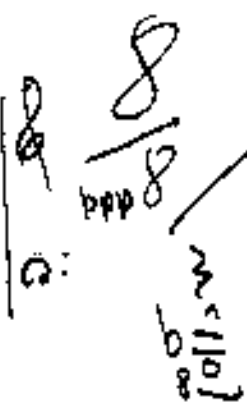
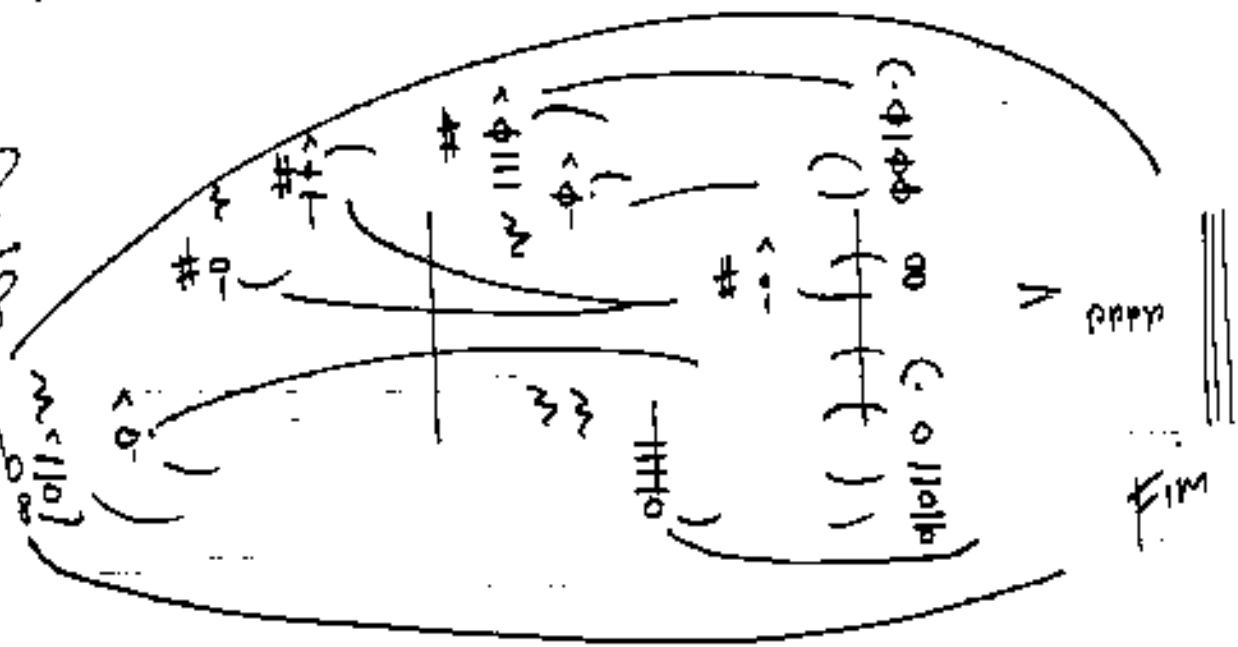
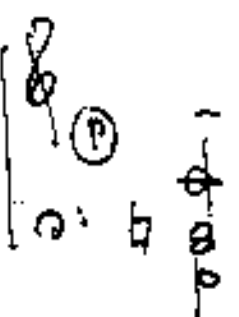
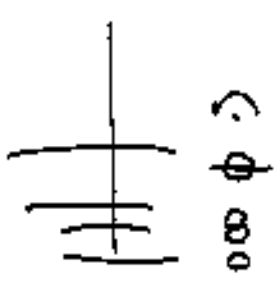
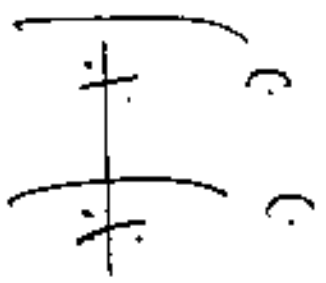
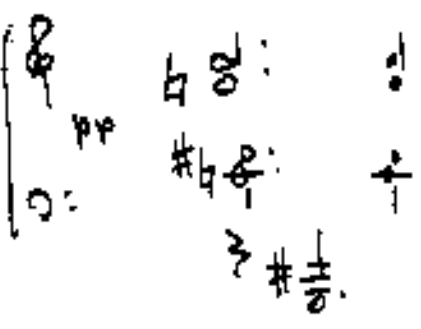
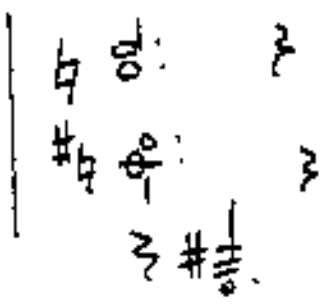
Handwritten musical notation for the third system of the second row, showing a treble clef, a common time signature, and notes with dynamic markings like *pppp*.

Handwritten musical notation for the first system of the third row, including a treble clef, a common time signature, and notes with dynamic markings like *fff*.

Handwritten musical notation for the second system of the third row, featuring a treble clef, a common time signature, and a complex chordal structure with a '3' marking.

Handwritten musical notation for the third system of the third row, showing a treble clef, a common time signature, and notes with dynamic markings.

2



III

(Tanz)

Prestissimo (auf 1 Schlag)

Hand

Handwritten musical score for a piece titled "Prestissimo (auf 1 Schlag)". The score is written in treble and bass clefs with a 2/4 time signature. It consists of four systems of two staves each. The first system includes a "Hand" label and a "Prestissimo" tempo marking. The notation includes various notes, rests, and dynamic markings like "f" and "p". The second system has a "p" marking. The third system has a "p" marking. The fourth system has a circled "1" above the first measure of the bass staff. The piece concludes with a double bar line.

Handwritten musical notation for the first system. The treble clef staff contains a sequence of notes: G#4, A4, B4, C#5, D5, with accents (^) above the last three notes. The bass clef staff contains notes: G#3, A3, B3, C4, D4. Below the bass staff are three bracketed chord diagrams: [A:], [A:], and [A:].

Handwritten musical notation for the second system. The treble clef staff contains notes: G#4, A4, B4, C#5, D5, with accents (^) above the last three notes. The bass clef staff contains notes: G#3, A3, B3, C4, D4. Below the bass staff are three bracketed chord diagrams: [A:], [A:], and [A:].

Handwritten musical notation for the third system. The treble clef staff contains notes: G#4, A4, B4, C#5, D5, with accents (^) above the last three notes. The bass clef staff contains notes: G#3, A3, B3, C4, D4. Below the bass staff are three bracketed chord diagrams: [A:], [A:], and [A:].

Handwritten musical notation for the fourth system. The treble clef staff contains notes: G#4, A4, B4, C#5, D5, with accents (^) above the last three notes. The bass clef staff contains notes: G#3, A3, B3, C4, D4. Below the bass staff are three bracketed chord diagrams: [A:], [A:], and [A:].

(2)

3
D.C.

IV.

(For Lisifer)

Presto

Handwritten musical notation for the first system. It features a treble clef, a key signature of one flat (B-flat), and a time signature of 2/4. The music is marked *mp*. The notation includes a melodic line with a slur over four measures and a bass line with a few notes. A circled number '1' is written to the right of the system.

Handwritten musical notation for the second system. It features a treble clef, a key signature of one flat (B-flat), and a time signature of 2/4. The music is marked *ff*. The notation includes a melodic line with a slur over four measures and a bass line with a few notes. A circled number '2' is written to the right of the system.

Handwritten musical notation for the third system. It features a treble clef, a key signature of one flat (B-flat), and a time signature of 2/4. The music is marked *pp*. The notation includes a melodic line with a slur over four measures and a bass line with a few notes. A circled number '3' is written to the right of the system.

Handwritten musical notation for the fourth system. It features a treble clef, a key signature of one flat (B-flat), and a time signature of 2/4. The music is marked *ff* and *pp*. The notation includes a melodic line with a slur over four measures and a bass line with a few notes. A circled number '4' is written to the right of the system, with the word 'FIN' written below it.

Handwritten musical notation for the first system. It consists of two staves (treble and bass clef) with notes and rests. Above the first measure, there are three upward-pointing arrows and the number '777'. The notation includes various accidentals and dynamic markings.

Handwritten musical notation for the second system. It features two staves with notes and rests. Above the first measure, there are three upward-pointing arrows and the number '5'. The notation includes various accidentals and dynamic markings.

Handwritten musical notation for the third system. It consists of two staves with notes and rests. Above the first measure, there are four upward-pointing arrows. The notation includes various accidentals and dynamic markings.

Handwritten musical notation for the fourth system. It features two staves with notes and rests. A large, wavy line is drawn across the staves, with the word "Gloss" written above it. Above the final measure, there are three upward-pointing arrows and the number '6'. The notation includes various accidentals and dynamic markings.

V.

(Altes Haus)
im dinsten Wald

Sehr ruhig (ohinter)

4/4 *pp*

ped. G. P.

pp

ped. G. P.

pp

G. P.

2te + ausklingen
bis pppp
diesen Takt

Handwritten musical notation, first system. Treble clef, common time signature. The first measure contains a whole note chord with notes Bb, Bb, and a whole rest. The second measure contains a whole note chord with notes Bb, Bb, and a whole rest. The third measure contains a whole note chord with notes B, B, and a whole rest. The fourth measure contains a whole note chord with notes B, B, and a whole rest. A circled 'P' is written below the first measure.

Handwritten musical notation, second system. Treble clef, common time signature. The first measure contains a whole note chord with notes B, B, and a whole rest. The second measure contains a whole note chord with notes B, B, and a whole rest. The third measure contains a whole note chord with notes B, B, and a whole rest. The fourth measure contains a whole note chord with notes B, B, and a whole rest. A circled '2' is written at the end of the system.

Handwritten musical notation, third system. Treble clef, common time signature. The first measure contains a whole note chord with notes Bb, Bb, and a whole rest. The second measure contains a whole note chord with notes Bb, Bb, and a whole rest. The third measure contains a whole note chord with notes B, B, and a whole rest. The fourth measure contains a whole note chord with notes B, B, and a whole rest. A circled 'P' is written below the first measure.

Handwritten musical notation, fourth system. Treble clef, common time signature. The first measure contains a whole note chord with notes B, B, and a whole rest. The second measure contains a whole note chord with notes B, B, and a whole rest. The third measure contains a whole note chord with notes B, B, and a whole rest. The fourth measure contains a whole note chord with notes B, B, and a whole rest. A circled 'P' is written below the first measure. At the end of the system, there is a box containing the text: G.P., D.C., and Fin.

VI.

(Die Uhr)

Moderato (sempre p)

Handwritten musical notation for the first system. It features a treble clef and a bass clef. The time signature is 4/4, with a 'p' (piano) dynamic marking. The treble staff contains a series of chords: a triad of G4, B4, D5, followed by a dyad of G4, B4, and then a triad of G4, B4, D5. The bass staff contains a single bass note G2, followed by a series of chords: G2, B2, D3, and then a dyad of G2, B2.

Handwritten musical notation for the second system. The treble staff contains a series of chords: a triad of G4, B4, D5, followed by a dyad of G4, B4, and then a triad of G4, B4, D5. The bass staff contains a series of chords: G2, B2, D3, and then a dyad of G2, B2.

Handwritten musical notation for the third system. The treble staff contains a series of chords: a triad of G4, B4, D5, followed by a dyad of G4, B4, and then a triad of G4, B4, D5. The bass staff contains a series of chords: G2, B2, D3, and then a dyad of G2, B2. The system concludes with a circled number '1' in the top right corner.

Handwritten musical notation for the first system. It begins with a treble clef and a common time signature (C). The first measure contains a whole note chord with notes G4, A4, B4, and C5. The second measure contains a whole note chord with notes G4, A4, and B4. The third measure contains a whole note chord with notes G4, A4, and B4. The fourth measure contains a whole note chord with notes G4, A4, and B4. The fifth measure contains a whole note chord with notes G4, A4, and B4. The sixth measure contains a whole note chord with notes G4, A4, and B4. The seventh measure contains a whole note chord with notes G4, A4, and B4. The eighth measure contains a whole note chord with notes G4, A4, and B4.

Handwritten musical notation for the second system. It begins with a treble clef and a common time signature (C). The first measure contains a whole note chord with notes G4, A4, B4, and C5. The second measure contains a whole note chord with notes G4, A4, and B4. The third measure contains a whole note chord with notes G4, A4, and B4. The fourth measure contains a whole note chord with notes G4, A4, and B4. The fifth measure contains a whole note chord with notes G4, A4, and B4. The sixth measure contains a whole note chord with notes G4, A4, and B4. The seventh measure contains a whole note chord with notes G4, A4, and B4. The eighth measure contains a whole note chord with notes G4, A4, and B4.

Handwritten musical notation for the third system. It begins with a treble clef and a common time signature (C). The first measure contains a whole note chord with notes G4, A4, B4, and C5. The second measure contains a whole note chord with notes G4, A4, and B4. The third measure contains a whole note chord with notes G4, A4, and B4. The fourth measure contains a whole note chord with notes G4, A4, and B4. The fifth measure contains a whole note chord with notes G4, A4, and B4. The sixth measure contains a whole note chord with notes G4, A4, and B4. The seventh measure contains a whole note chord with notes G4, A4, and B4. The eighth measure contains a whole note chord with notes G4, A4, and B4.

Handwritten musical notation for the fourth system. It begins with a treble clef and a common time signature (C). The first measure contains a whole note chord with notes G4, A4, B4, and C5. The second measure contains a whole note chord with notes G4, A4, and B4. The third measure contains a whole note chord with notes G4, A4, and B4. The fourth measure contains a whole note chord with notes G4, A4, and B4. The fifth measure contains a whole note chord with notes G4, A4, and B4. The sixth measure contains a whole note chord with notes G4, A4, and B4. The seventh measure contains a whole note chord with notes G4, A4, and B4. The eighth measure contains a whole note chord with notes G4, A4, and B4.

bis ins Nichts weiter...
 ↕
 pppp

(sehr frei)

Allegretto

VII.

(Der Clavier)

Handwritten musical notation for the first system. It features a treble and bass clef with a 3/4 time signature. The notation includes notes, rests, and dynamic markings such as 'p' and 'acc.' with an arrow pointing right.

Handwritten musical notation for the second system. It includes a 'rit.' marking with an arrow pointing left, a circled '1' with 'breit (pesante)', and a 'fine' marking. The notation shows notes and rests in both staves.

Handwritten musical notation for the third system. It starts with 'accell.' and an arrow pointing right, followed by 'Presto' and a circled '2'. The notation includes notes, rests, and dynamic markings.

Handwritten musical notation for the fourth system. It shows a melodic line in the treble clef and a bass line, ending with a circled '2' and the text 'Kleine G.P.'.

Allegretto (crist.)

Handwritten musical notation for system 4, measures 1-5. Treble and bass staves with notes and rests. Measure 5 has a circled '4' at the end.

Handwritten musical notation for system 5, measures 1-4. Treble and bass staves. Measure 1 has "cresc..." written above it. Measure 4 has a circled "5" at the end.

Handwritten musical notation for system 6, measures 1-4. Treble and bass staves. Measure 4 has a circled "6" at the end.

Handwritten musical notation for system 7, measures 1-5. Treble and bass staves. Measure 3 is marked "Prestissimo". Measure 5 has a circled "7" at the end. Below the staff, it says "2. te x D.C. al Fin".

VIII.

(Trauerklänge
von weiter-
näher kommend)
und wieder weg)

Sehr langsam

2

Handwritten musical notation for exercise 2, consisting of two systems. Each system includes a treble clef staff with notes and rests, and a bass clef staff with chord diagrams. The notation includes various musical symbols such as brackets, slurs, and accidentals.

3

Handwritten musical notation for exercise 3, consisting of two systems. Each system includes a treble clef staff with notes and rests, and a bass clef staff with chord diagrams. The notation includes various musical symbols such as brackets, slurs, and accidentals.

Handwritten musical notation for exercise 4, enclosed in a box. It includes a treble clef staff with notes and rests, and a bass clef staff with chord diagrams. The notation includes various musical symbols such as brackets, slurs, and accidentals.

Handwritten musical notation for exercise 5, consisting of two systems. Each system includes a treble clef staff with notes and rests, and a bass clef staff with chord diagrams. The notation includes various musical symbols such as brackets, slurs, and accidentals.

größten rit + dim.....

A.

(Lied)

einfach (frei) (altmodisch / 1700)

Handwritten musical notation for the first system. It begins with a treble clef and a circled 'p' dynamic marking. The melody consists of several notes, some with slurs and accents. A bracket above the notes contains the numbers '0 3 6'. The system concludes with a double bar line.

Handwritten musical notation for the second system. It starts with a treble clef and a circled 'p' dynamic marking. The notes are grouped with slurs and accents. A bracket above the notes contains the numbers '0 3 6'. The system ends with a double bar line.

Handwritten musical notation for the third system. It begins with a treble clef and a circled 'p' dynamic marking. The melody is written with slurs and accents. A bracket above the notes contains the numbers '0 3 6'. The system concludes with a double bar line.

Handwritten musical notation for the fourth system. It starts with a treble clef and a circled 'p' dynamic marking. The notes are grouped with slurs and accents. A bracket above the notes contains the numbers '0 3 6'. The system ends with a double bar line.

Handwritten musical notation for the fifth system. It begins with a treble clef and a circled 'p' dynamic marking. The notes are grouped with slurs and accents. A bracket above the notes contains the numbers '0 3 6'. The system concludes with a double bar line and a circled '1' in the margin.

(rubato)
Ped. bis &

Handwritten musical notation for the first system. It consists of two staves: a treble staff and a bass staff. The treble staff has a slur over a series of notes, with a dynamic marking 'ppp' and a '1' above it. The bass staff has a slur over notes, with a dynamic marking 'frei' and a '1' above it. There are some question marks and other markings scattered around the notes.

Adagio

Warten
bis neu →

Pedal weiter →
bis &

Handwritten musical notation for the second system. It features two staves. The treble staff has a slur over notes, with a dynamic marking 'ppp' and a '1' above it. The bass staff has notes with a dynamic marking 'ppp' and a '1' above it. There are arrows and other markings indicating performance instructions.

Handwritten musical notation for the third system. It consists of two staves. The treble staff has notes with a dynamic marking 'ppp' and a '1' above it. The bass staff has notes with a dynamic marking 'ppp' and a '1' above it. There are various markings and slurs throughout the system.

Handwritten musical notation for the fourth system. It features two staves. The treble staff has notes with a dynamic marking 'ppp' and a '1' above it. The bass staff has notes with a dynamic marking 'ppp' and a '1' above it. The system ends with the text 'D.C. or Fin'.

+

(Motor revision)

Presto (sempre 772)

(chart)
772
♩ 6
♩ 8

Handwritten musical notation for the first system. It consists of two staves: a treble clef staff with a key signature of one flat (B-flat) and a common time signature (C), and a guitar staff below it. The guitar staff shows a sequence of chords: E7, D7, C7, B7, A7, G7, F7, E7. The treble staff contains notes and rests corresponding to these chords. A circled '1' is written above the first measure of the guitar staff.

Handwritten musical notation for the second system. It consists of two staves: a treble clef staff with a key signature of one flat (B-flat) and a common time signature (C), and a guitar staff below it. The guitar staff shows a sequence of chords: E7, D7, C7, B7, A7, G7, F7, E7. The treble staff contains notes and rests corresponding to these chords. A circled '1' is written above the first measure of the guitar staff.

Handwritten musical notation for the third system. It consists of two staves: a treble clef staff with a key signature of one flat (B-flat) and a common time signature (C), and a guitar staff below it. The guitar staff shows a sequence of chords: E7, D7, C7, B7, A7, G7, F7, E7. The treble staff contains notes and rests corresponding to these chords. A circled '1' is written above the first measure of the guitar staff.

Handwritten musical notation for the fourth system. It consists of two staves: a treble clef staff with a key signature of one flat (B-flat) and a common time signature (C), and a guitar staff below it. The guitar staff shows a sequence of chords: E7, D7, C7, B7, A7, G7, F7, E7. The treble staff contains notes and rests corresponding to these chords. A circled '1' is written above the first measure of the guitar staff.

Handwritten musical notation for a piano piece, consisting of five systems. Each system contains a treble clef staff and a bass clef staff. The notation includes various notes, rests, and dynamic markings such as *mp* and *pp*. A circled number '2' is present at the beginning of the second system. The piece concludes with a double bar line.

Handwritten musical notation for a piano piece, consisting of five systems. The first system includes a treble clef staff and a bass clef staff with notes and rests. The subsequent four systems consist of a single staff with a treble clef, each containing a chord symbol (e.g., F#m, F#m7, F#m9, F#m11). The piece concludes with a double bar line.

PEDAL