

L.v. BEE THOVEN



W.A. MOZART



NOTENHEFT

F. SCHUBERT



J. HAYDN



J. STRAUSS



FORNAT

5 Stunden
für
Jazz piano

1968

Alois Huber

1

Root

Handwritten musical notation for the first system. It features a treble clef and a circled '1' in the key signature. The notation includes a series of notes and rests, with some notes marked with a circled 'P'. There are also some handwritten annotations like 'G' and '4'.

Handwritten musical notation for the second system. It continues the melody from the first system, showing a series of notes and rests. There are some handwritten annotations like 'Z' and '2'.

Handwritten musical notation for the third system. It features a treble clef and a circled 'F' in the key signature. The notation includes a series of notes and rests, with some notes marked with a circled 'F'. There are also some handwritten annotations like '2' and '3'.

2

Handwritten musical notation on a five-line staff. The top staff contains a melodic line with a slur over the first two measures and a fermata over the second. The bottom staff contains a bass line with notes and rests. There are various musical symbols like accidentals and dynamics.

Handwritten musical notation on a five-line staff. Similar to the first system, it shows a melodic line with a slur and a fermata, and a corresponding bass line.

Handwritten musical notation on a five-line staff. The melodic line continues with a slur and a fermata. The bass line has a long horizontal line with a slash, possibly indicating a rest or a specific performance instruction.

⊕ CODA

Handwritten musical notation on a five-line staff. The top staff starts with a dynamic marking '> din' and contains notes with accidentals. The bottom staff contains a bass line with notes and rests.

Handwritten musical notation for the first system. It consists of two staves: a treble clef on top and a bass clef on the bottom. The key signature is one sharp (F#), indicated by a circled '11' in the bass clef. The notation includes vertical lines with stems and beams, and a fermata-like symbol above the second measure.

Handwritten musical notation for the second system. It consists of two staves: a treble clef on top and a bass clef on the bottom. The key signature is one sharp (F#), indicated by a circled '11' in the bass clef. The notation includes vertical lines with stems and beams, and a fermata-like symbol above the second measure.

Handwritten musical notation for the third system. It consists of two staves: a treble clef on top and a bass clef on the bottom. The key signature is one sharp (F#), indicated by a circled '11' in the bass clef. The notation includes vertical lines with stems and beams, and a fermata-like symbol above the second measure.

Handwritten musical notation for the first system. It consists of two staves. The top staff has a treble clef, a key signature of one flat (B-flat), and a 4/4 time signature. The first measure contains a melodic line with a slur and a bass line with a chord. The second measure has a melodic line with a slur and a bass line with a chord. The third and fourth measures show simplified notation with stems and beams.

Handwritten musical notation for the second system. It consists of two staves. The top staff has a treble clef, a key signature of one flat (B-flat), and a 4/4 time signature. The first measure contains a melodic line with a slur and a bass line with a chord. The second measure has a melodic line with a slur and a bass line with a chord. The third and fourth measures show simplified notation with stems and beams.

Handwritten musical notation for the third system. It consists of two staves. The top staff has a treble clef, a key signature of one flat (B-flat), and a 4/4 time signature. The first measure contains a melodic line with a slur and a bass line with a chord. The second measure has a melodic line with a slur and a bass line with a chord. The third and fourth measures show simplified notation with stems and beams.

Handwritten musical notation for the fourth system. It consists of two staves. The top staff has a treble clef, a key signature of one flat (B-flat), and a 4/4 time signature. The first measure contains a melodic line with a slur and a bass line with a chord. The second measure has a melodic line with a slur and a bass line with a chord. The third and fourth measures show simplified notation with stems and beams.

2.
D.C. al f

sempre din

N

[The page contains several lines of extremely faint, illegible text, likely bleed-through from the reverse side of the document. The text is arranged in approximately 10-12 horizontal lines across the page.]

2

tempo

7

Handwritten musical notation for the first system. The treble staff contains a melodic line with a slur and an accent mark. The bass staff contains a bass line with a slur and an accent mark. The key signature has one sharp (F#).

Handwritten musical notation for the second system. The treble staff contains a melodic line with a slur and an accent mark. The bass staff contains a bass line with a slur and an accent mark. The key signature has one sharp (F#).

Handwritten musical notation for the third system. The treble staff contains a melodic line with a slur and an accent mark. The bass staff contains a bass line with a slur and an accent mark. The key signature has one sharp (F#).

Handwritten musical notation for the fourth system. The treble staff contains a melodic line with a slur and an accent mark. The bass staff contains a bass line with a slur and an accent mark. The key signature has one sharp (F#).

Handwritten musical notation for the first system. It consists of two staves. The upper staff is in treble clef and the lower in bass clef. The music includes notes with accidentals (flats and naturals), slurs, and dynamic markings such as *p* and *>*. The notation is somewhat sketchy and appears to be a working draft.

(frei)

Handwritten musical notation for the second system. It features a treble clef staff with notes, slurs, and accents. A circled *p* marking is present at the beginning of the system. The notation is dense and appears to be a working draft.

Ad lib

Handwritten musical notation for the third system. It shows a treble clef staff with notes, accidentals, and a circled *p* marking. The notation is dense and appears to be a working draft.

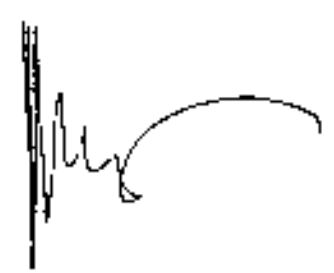
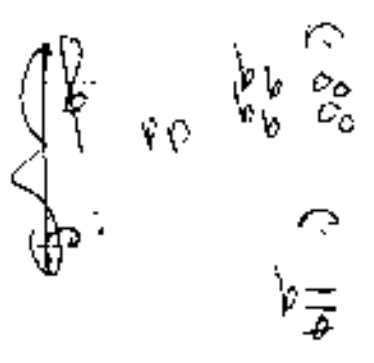
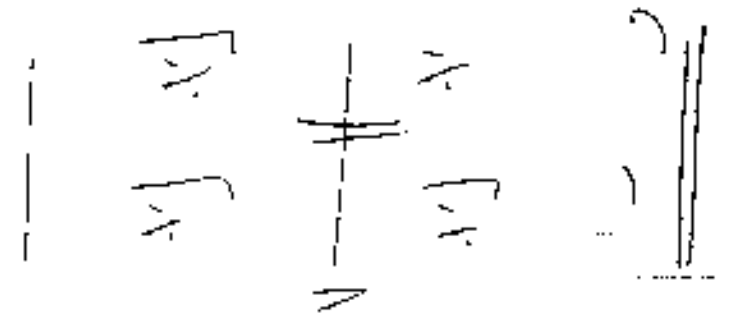
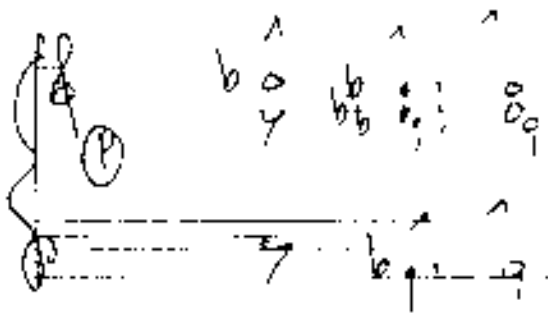
(2. Zeit)

D.C.
al

Handwritten musical notation for the fourth system. It consists of two staves. The upper staff is in treble clef and the lower in bass clef. The music includes notes with accidentals, slurs, and dynamic markings such as *p* and *>*. The notation is dense and appears to be a working draft.



sempre din + gub



[The page contains approximately 15 lines of extremely faint, illegible text, likely representing a list or table of contents.]

3

Mod. assai

Handwritten musical notation for the first system. It includes a treble clef, a 4/4 time signature, and a melodic line with a slur and accents. The bass line is mostly rests. To the right, there are two vertical staves with notes and stems.

Handwritten musical notation for the second system, similar to the first but with a key signature change to one sharp (F#).

Handwritten musical notation for the third system, similar to the first but with a key signature change to two sharps (F#, C#).

Handwritten musical notation on a grand staff. The right hand has a melodic line with a slur over the first four notes, followed by a whole note chord. The left hand has a bass line with a whole note chord. A fermata is placed over the final chord in both hands.

Handwritten musical notation on a grand staff. The right hand has a melodic line with a slur and an accent mark over the first four notes, followed by a whole note chord. The left hand has a bass line with a whole note chord. A fermata is placed over the final chord in both hands. A circled "ff" dynamic marking is present in the left hand.

Handwritten musical notation on a grand staff. The right hand has a melodic line with a slur over the first four notes, followed by a whole note chord. The left hand has a bass line with a whole note chord. A fermata is placed over the final chord in both hands.

Handwritten musical notation on a grand staff. The right hand has a melodic line with a slur over the first four notes, followed by a whole note chord. The left hand has a bass line with a whole note chord. A fermata is placed over the final chord in both hands. A circled "pp" dynamic marking is present in the left hand.

Handwritten musical notation for the first system. The upper staff is in treble clef with a key signature of one sharp (F#). It contains a melodic line starting with a dynamic marking *dim* and a crescendo hairpin. The lower staff is in bass clef and contains a bass line with a dynamic marking *dim*. The system concludes with a double bar line.

Handwritten musical notation for the first system, continuing from the previous system. It shows a continuation of the melodic and bass lines across a double bar line.

Handwritten musical notation for the second system. The upper staff is in treble clef with a key signature of one sharp (F#). It contains a melodic line with a dynamic marking *p* in a circle. The lower staff is in bass clef and contains a bass line with a dynamic marking *p* in a circle. The system concludes with a double bar line.

Handwritten musical notation for the second system, continuing from the previous system. It shows a continuation of the melodic and bass lines across a double bar line.

Handwritten musical notation for the third system. The upper staff is in treble clef with a key signature of one sharp (F#). It contains a melodic line with a dynamic marking *p* in a circle. The lower staff is in bass clef and contains a bass line with a dynamic marking *p* in a circle. The system concludes with a double bar line.

Handwritten musical notation for the third system, continuing from the previous system. It shows a continuation of the melodic and bass lines across a double bar line, with the word *cresc.* written below the staff.

Handwritten musical notation for the fourth system. The upper staff is in treble clef with a key signature of one sharp (F#). It contains a melodic line with a dynamic marking *f*. The lower staff is in bass clef and contains a bass line with a dynamic marking *f*. The system concludes with a double bar line.

Handwritten musical notation for the fourth system, continuing from the previous system. It shows a continuation of the melodic and bass lines across a double bar line.

Handwritten musical notation on a five-line staff. The top staff is in treble clef and contains three measures of chords with accents (^) above them. The bottom staff is in bass clef and contains a single measure with a slur over it and the number '60' written below. The word 'dim' is written below the second measure of the top staff.

Handwritten musical notation on a five-line staff. The top staff is in treble clef and contains a sequence of notes with a slur over them and a '4' written below. The bottom staff is in bass clef and contains a sequence of notes with a slur over them and a '4' written below.

Handwritten musical notation on a five-line staff. The top staff is in treble clef and contains a sequence of notes with a slur over them and a '4' written below. The bottom staff is in bass clef and contains a sequence of notes with a slur over them and a '4' written below. The word 'p' is written in a circle at the beginning of the top staff. The word 'dim' is written below the second measure of the top staff. The word '2. + Dec.' is written below the third measure of the top staff, and 'al' is written below the fourth measure of the top staff.

Compare dir (+ px = mf)

codit

4

longer

Handwritten musical notation for the first system, featuring a treble clef, a key signature of one flat (Bb), and a circled '4' below the staff. The notation includes a melodic line with a slur and a fermata, and a bass line with a circled '4' and a fermata.

Handwritten musical notation for the second system, featuring a treble clef, a key signature of one flat (Bb), and a circled '4' below the staff. The notation includes a melodic line with a slur and a fermata, and a bass line with a circled '4' and a fermata.

Handwritten musical notation for the third system, featuring a treble clef, a key signature of one flat (Bb), and a circled '4' below the staff. The notation includes a melodic line with a slur and a fermata, and a bass line with a circled '4' and a fermata.

(2 + pu. rit + chin)

tento

pp 4
110

Handwritten musical notation for the first system. The treble staff contains a melodic line with notes G4, A4, B4, C5, and D5, with slurs and accents. The bass staff contains a bass line with notes G2, F2, E2, and D2, with slurs and accents. A dynamic marking 'p' is present in the first measure.

Handwritten musical notation for the first system, showing a grand staff with two staves. The notation is sparse, with a few notes and rests.

Handwritten musical notation for the second system. The treble staff contains a melodic line with notes G4, A4, B4, C5, and D5, with slurs and accents. The bass staff contains a bass line with notes G2, F2, E2, and D2, with slurs and accents. A dynamic marking 'p' is present in the first measure.

Handwritten musical notation for the second system, showing a grand staff with two staves. The notation is sparse, with a few notes and rests.

Handwritten musical notation for the third system. The treble staff contains a melodic line with notes G4, A4, B4, C5, and D5, with slurs and accents. The bass staff contains a bass line with notes G2, F2, E2, and D2, with slurs and accents. A dynamic marking 'p' is present in the first measure.

Handwritten musical notation for the third system, showing a grand staff with two staves. The notation is sparse, with a few notes and rests.

Handwritten musical notation for the first system. The treble clef staff contains a sequence of notes: a quarter rest, a quarter note G4, a quarter note A4, a quarter note B4, a quarter note C5, a quarter note B4, a quarter note A4, and a quarter note G4. The bass clef staff contains a quarter note G2, a quarter note A2, a quarter note B2, a quarter note C3, a quarter note B2, a quarter note A2, and a quarter note G2. A guitar chord diagram is shown to the right, with a bar across the first two frets and dots on strings 1, 2, 3, and 4.

Handwritten musical notation for the second system. The treble clef staff contains a sequence of notes: a quarter rest, a quarter note G4, a quarter note A4, a quarter note B4, a quarter note C5, a quarter note B4, a quarter note A4, and a quarter note G4. The bass clef staff contains a quarter note G2, a quarter note A2, a quarter note B2, a quarter note C3, a quarter note B2, a quarter note A2, and a quarter note G2. A guitar chord diagram is shown to the right, with a bar across the first two frets and dots on strings 1, 2, 3, and 4.

Handwritten musical notation for the third system. The treble clef staff contains a sequence of notes: a quarter rest, a quarter note G4, a quarter note A4, a quarter note B4, a quarter note C5, a quarter note B4, a quarter note A4, and a quarter note G4. The bass clef staff contains a quarter note G2, a quarter note A2, a quarter note B2, a quarter note C3, a quarter note B2, a quarter note A2, and a quarter note G2. A guitar chord diagram is shown to the right, with a bar across the first two frets and dots on strings 1, 2, 3, and 4.

Handwritten musical notation for the fourth system. The treble clef staff contains a sequence of notes: a quarter rest, a quarter note G4, a quarter note A4, a quarter note B4, a quarter note C5, a quarter note B4, a quarter note A4, and a quarter note G4. The bass clef staff contains a quarter note G2, a quarter note A2, a quarter note B2, a quarter note C3, a quarter note B2, a quarter note A2, and a quarter note G2. A guitar chord diagram is shown to the right, with a bar across the first two frets and dots on strings 1, 2, 3, and 4.

Handwritten musical notation on a grand staff. The left hand plays a bass line in B-flat major (one flat). The right hand has a melodic line with accents and a long phrase spanning two measures. A large arrow points to the right.

Handwritten musical notation on a grand staff. The left hand plays a bass line in B-flat major. The right hand has a melodic line with accents and a phrase marked with an '8' above it. A double bar line is present at the end of the phrase.

frei Improvisation

Handwritten musical notation on a grand staff. The left hand plays a bass line in B-flat major. The right hand features a highly expressive, wavy melodic line characteristic of free improvisation.

Handwritten musical notation on a grand staff. The left hand plays a bass line in B major (two sharps). The right hand features a highly expressive, wavy melodic line characteristic of free improvisation.

1.

2. sempre diu