

L.v. BEETHOVEN



W.A. MOZART



# NOTENHEFT

---

F. SCHUBERT



J. HAYDN



J. STRAUSS



5 Studien  
für  
Jazz piano

1968

Adolf Scherbaum

1

Mob.

Handwritten musical notation for the first system. It consists of two staves. The top staff is in treble clef with a 4/4 time signature. It contains a melodic line with slurs and a circled 'p' dynamic marking. The bottom staff is in bass clef and contains chords and slurs.

Handwritten musical notation for the second system. It consists of two staves. The top staff is in treble clef and contains a melodic line with slurs. The bottom staff is in bass clef and contains chords and slurs.

Handwritten musical notation for the third system. It consists of two staves. The top staff is in treble clef and contains a melodic line with slurs and a circled 'f' dynamic marking. The bottom staff is in bass clef and contains chords and slurs.

2

Handwritten musical notation for the first system. The treble clef staff contains a melodic line with a slur over the first two measures, a sharp sign, and various notes. The bass clef staff contains a bass line with a slur, a flat sign, and various notes. There are also some handwritten annotations above the staff.

Handwritten musical notation for the second system. The treble clef staff continues the melodic line with a slur and a sharp sign. The bass clef staff continues the bass line with a slur and a sharp sign.

Handwritten musical notation for the third system. The treble clef staff features a slur and a flat sign. The bass clef staff has a slur and a flat sign.

Handwritten musical notation for the fourth system. The treble clef staff includes a 'coda' marking and a circled 'C'. The bass clef staff has a circled 'C' and various notes. The system ends with a double bar line and a repeat sign.

Handwritten musical notation for the first system. It consists of two staves. The treble staff has a circled plus sign (+) in the first measure. The bass staff has a circled plus sign (+) in the first measure. The notation includes various chords and melodic lines, with a fermata over the final measure of the system.

Handwritten musical notation for the second system. It consists of two staves. The treble staff has a circled plus sign (+) in the first measure. The bass staff has a circled plus sign (+) in the first measure. The notation includes various chords and melodic lines, with a fermata over the final measure of the system.

Handwritten musical notation for the third system. It consists of two staves. The treble staff has a circled plus sign (+) in the first measure. The bass staff has a circled plus sign (+) in the first measure. The notation includes various chords and melodic lines, with a fermata over the final measure of the system.

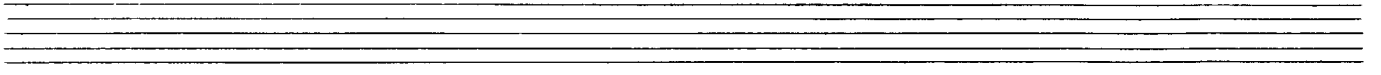
Handwritten musical notation for the first system. It features a treble clef and a key signature of one flat (B-flat). The notation includes a melodic line with a slur and a fermata, and a bass line with a few notes. An arrow points to the right above the staff.

Handwritten musical notation for the second system. It includes a circled '11' in the treble clef. The notation shows complex chordal textures in both the treble and bass staves, with various accidentals and slurs.

Handwritten musical notation for the third system. The treble staff shows a sequence of chords with various accidentals, while the bass staff has a melodic line with slurs and a fermata.

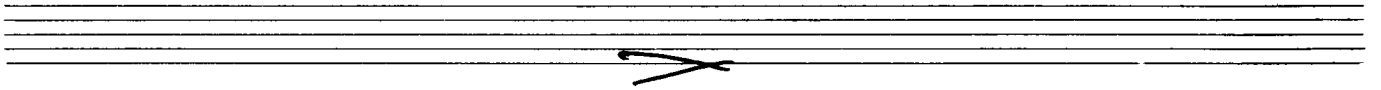
Handwritten musical notation for the fourth system. It features complex chordal structures in both staves, with many accidentals and slurs. The notation is dense and expressive.

2.  
D.C. al  $\phi$

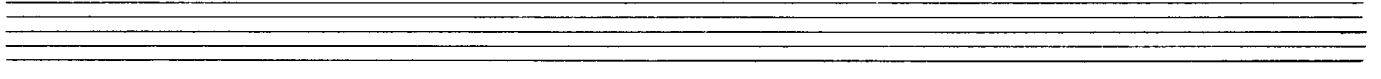


*sempre din*

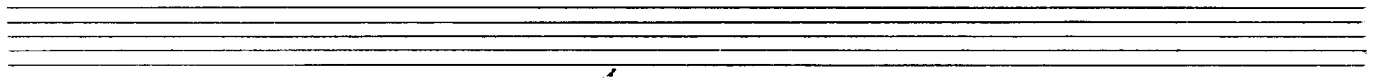
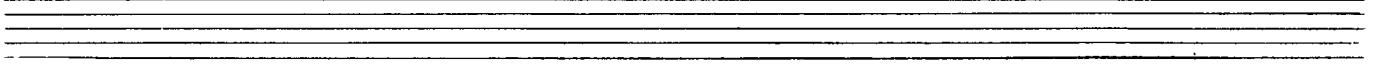
Handwritten musical notation for the first system. It consists of two staves. The upper staff contains a melodic line with notes and accidentals, including a large 'V' marking. The lower staff contains chordal accompaniment with notes and accidentals. A slur covers the first two measures of the upper staff.



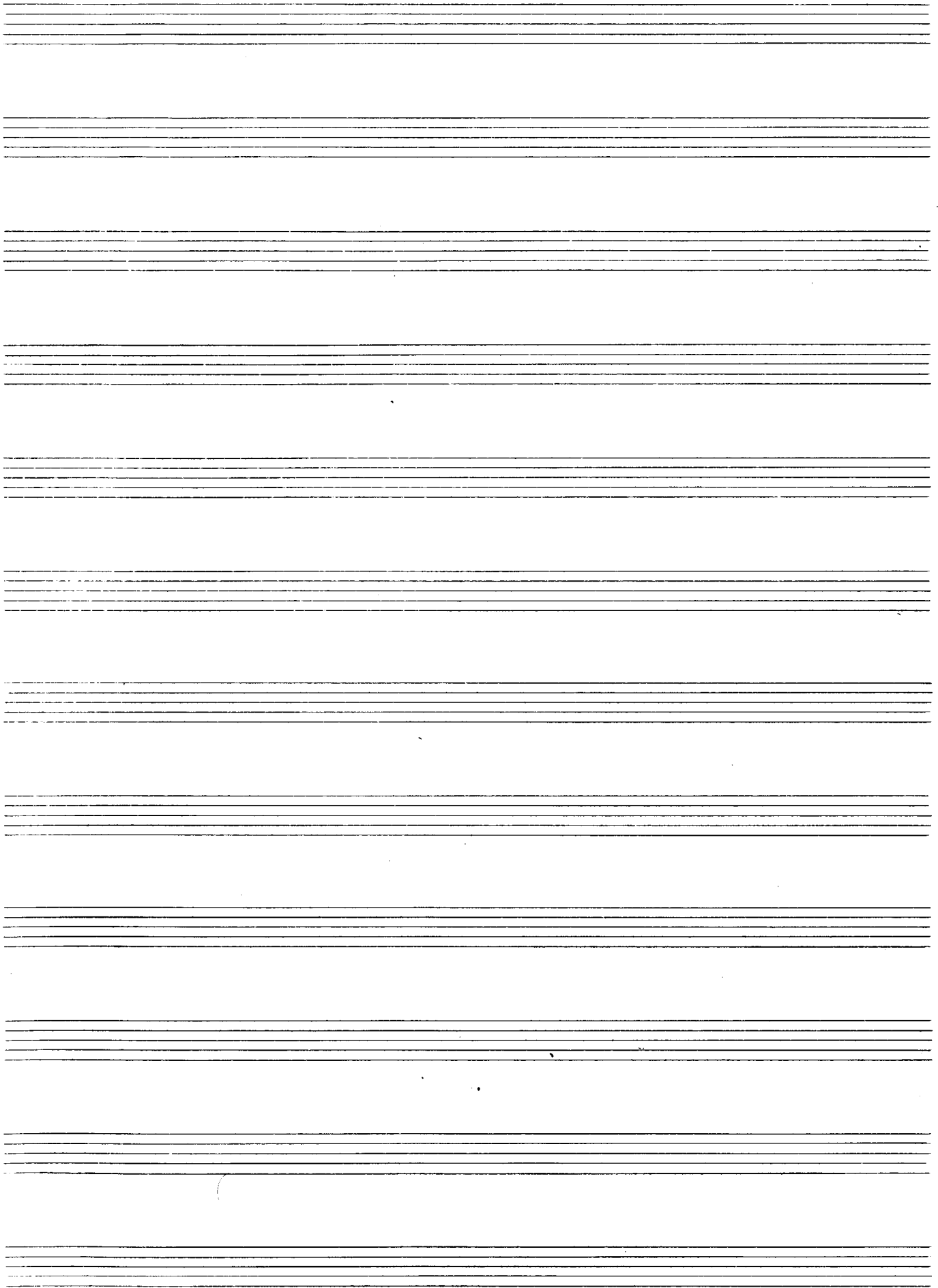
Handwritten musical notation for the second system, similar to the first. It features two staves with melodic and harmonic lines. A slur is present over the first two measures of the upper staff.



Handwritten musical notation for the third system. The upper staff begins with a circled 'p' (piano) dynamic marking. The notation includes notes, accidentals, and a 'pp' (pianissimo) dynamic marking. A slur is present over the latter part of the system.



6





2

*lento*

7

Handwritten musical notation for the first system. The treble clef part begins with a dynamic marking of *ff* and a sharp sign (#). It features complex chords with many notes, some marked with accents (^) and slurs. The bass clef part contains a simple melodic line with quarter notes.

Handwritten musical notation for the second system. The treble clef part starts with a dynamic marking of *mf* and contains dense chords with many notes, some marked with accents (^). The bass clef part has a melodic line with quarter notes and slurs.

Handwritten musical notation for the third system. The treble clef part begins with a dynamic marking of *f* and contains chords with many notes, some marked with accents (^). The bass clef part has a melodic line with quarter notes and slurs.

Handwritten musical notation for the fourth system. The treble clef part starts with a dynamic marking of *ff* and contains a melodic line with quarter notes and slurs. The bass clef part has chords with many notes, some marked with accents (^).

Handwritten musical notation on a grand staff. The right hand part features a sequence of chords with stems and flags, starting with a sharp sign. The left hand part includes a circled sharp sign, a treble clef, and a bass clef. The key signature is one sharp (F#) and the time signature is 9/8. A circled '4' is written above the first measure. The notation is followed by two vertical bar lines.

Handwritten musical notation on a grand staff. The right hand part features a sequence of chords with stems and flags, starting with a sharp sign. The left hand part includes a treble clef and a bass clef. The key signature is one sharp (F#) and the time signature is 9/8. The word "dim" is written in the left hand. The notation is followed by two vertical bar lines.

Handwritten musical notation on a grand staff. The right hand part features a sequence of notes with stems and flags, starting with a sharp sign. The left hand part includes a treble clef and a bass clef. The key signature is one sharp (F#) and the time signature is 9/8. The notation is followed by two vertical bar lines.

Handwritten musical notation for the first system. It consists of two staves. The upper staff is in treble clef and contains a melodic line with notes such as E, G, B, and A, with various accidentals (flats and naturals) and dynamic markings like 'f' and '>'. The lower staff is in bass clef and contains a bass line with notes like G, F, E, and D, also with accidentals and dynamic markings. The system concludes with a double bar line and a fermata.

(frei)

Handwritten musical notation for the second system, starting with the tempo marking '(frei)'. It consists of two staves. The upper staff is in treble clef and features a rhythmic pattern of eighth notes with accents (^) and slurs. The lower staff is in bass clef and contains a bass line with notes and accidentals. The system concludes with a double bar line and a fermata.

sehr ruhig

Handwritten musical notation for the third system, starting with the tempo marking 'sehr ruhig'. It consists of two staves. The upper staff is in treble clef and contains a melodic line with notes like G, F, E, and D, with accidentals and dynamic markings. The lower staff is in bass clef and contains a bass line with notes and accidentals. The system concludes with a double bar line and a fermata.

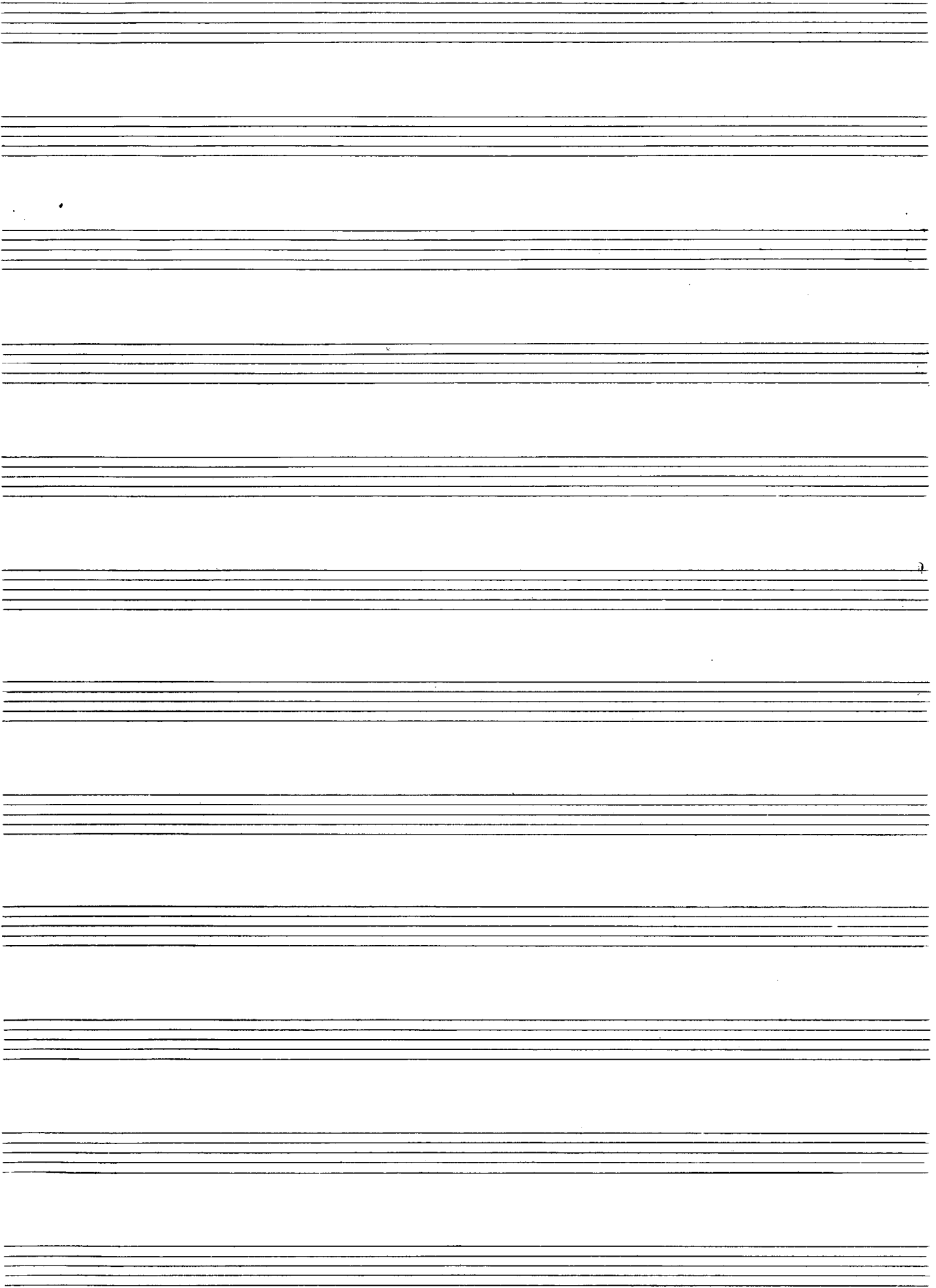
(2. + gut)

D.C.  
al

Handwritten musical notation for the fourth system, starting with the tempo marking '(2. + gut)'. It consists of two staves. The upper staff is in treble clef and contains a melodic line with notes like G, F, E, and D, with accidentals and dynamic markings. The lower staff is in bass clef and contains a bass line with notes and accidentals. The system concludes with a double bar line, a fermata, and the marking 'D.C. al'.

*sempre dolce + gut*

11



3

Mod. assai

Handwritten musical notation for the first system. It consists of a treble and bass clef. The time signature is 4/4. The melody in the treble clef starts with a quarter note G4, followed by eighth notes A4, B4, C5, D5, E5, and F5. A slur covers the first six notes, with an accent (^) over the final note F5. The bass clef contains a whole rest in the first measure, followed by chords in the second and third measures. The second measure has a chord with notes G2, B2, D3, and F3. The third measure has a chord with notes G2, B2, D3, and F3. The system ends with a double bar line.

Handwritten musical notation for the second system. It consists of a treble and bass clef. The melody in the treble clef starts with a quarter note G4, followed by eighth notes A4, B4, C5, D5, E5, and F5. A slur covers the first six notes, with an accent (^) over the final note F5. The bass clef contains a whole rest in the first measure, followed by chords in the second and third measures. The second measure has a chord with notes G2, B2, D3, and F3. The third measure has a chord with notes G2, B2, D3, and F3. The system ends with a double bar line.

Handwritten musical notation for the third system. It consists of a treble and bass clef. The melody in the treble clef starts with a quarter note G4, followed by eighth notes A4, B4, C5, D5, E5, and F5. A slur covers the first six notes, with an accent (^) over the final note F5. The bass clef contains a whole rest in the first measure, followed by chords in the second and third measures. The second measure has a chord with notes G2, B2, D3, and F3. The third measure has a chord with notes G2, B2, D3, and F3. The system ends with a double bar line.

Handwritten musical notation for the first system. The treble clef is on the left. The key signature has one sharp (F#). The first measure contains a melodic line with a slur over the first four notes. The bass line contains chords and rests.

Handwritten musical notation for the second system. The treble clef is on the left. The key signature has one flat (Bb). The first measure contains a melodic line with a slur and an accent mark. A circled 'ff' dynamic marking is present. The bass line contains chords and rests.

Handwritten musical notation for the third system. The treble clef is on the left. The key signature has one flat (Bb). The first measure contains a melodic line with a slur. The bass line contains chords and rests.

Handwritten musical notation for the fourth system. The treble clef is on the left. The key signature has one sharp (F#). The first measure contains a melodic line with a slur and double slurs under the notes. The bass line contains chords and rests.



Handwritten musical notation for the first system. The treble clef staff contains a melodic line starting with a sharp sign, followed by notes with slurs and accents. The bass clef staff contains a bass line with notes and a chord symbol  $b7 \frac{d}{\circ}$ . The word "dim" with an accent mark is written above the first measure.

Handwritten musical notation for the second system. The treble clef staff features notes with slurs and a circled 'p' dynamic marking. The bass clef staff contains notes and a circled 'p' dynamic marking. The system concludes with a double bar line and a sharp sign.

Handwritten musical notation for the third system. The treble clef staff has notes with slurs and a circled 'p' dynamic marking. The bass clef staff contains notes and a circled 'p' dynamic marking. The instruction "cresc." is written in the middle of the system.

Handwritten musical notation for the fourth system. The treble clef staff contains notes with slurs and a sharp sign. The bass clef staff contains notes and a sharp sign.

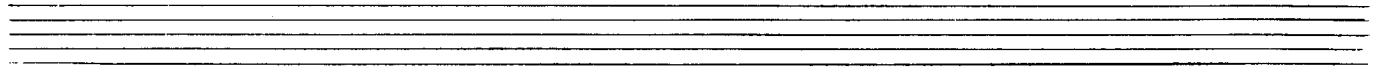
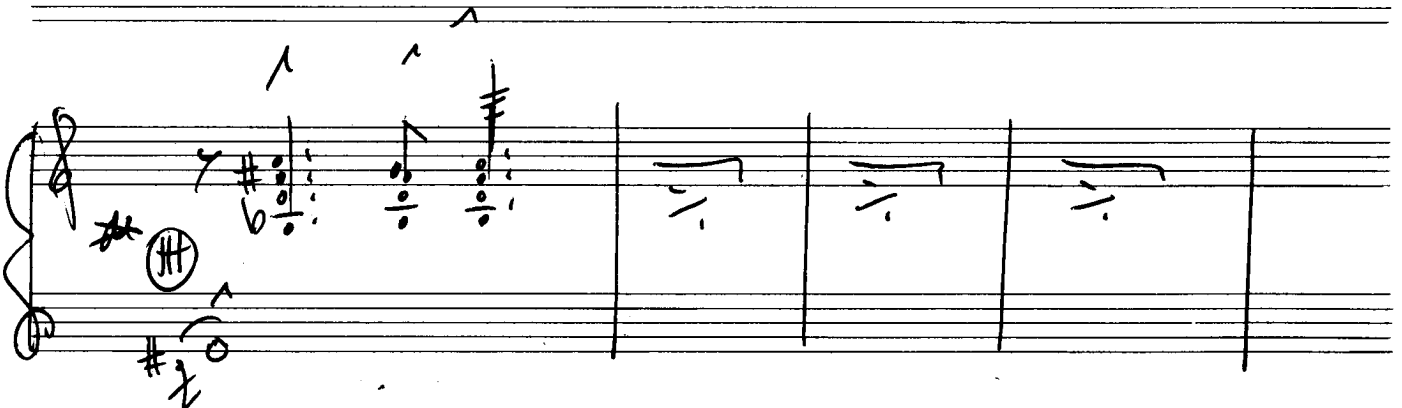
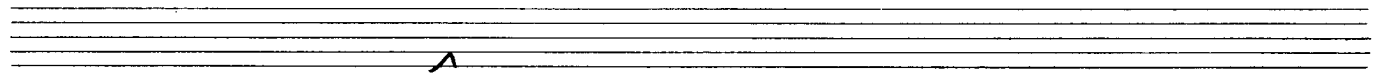
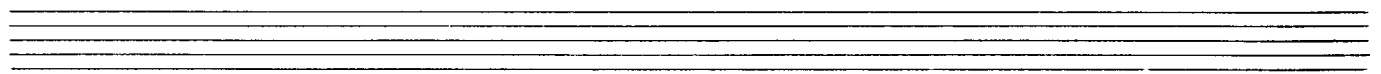
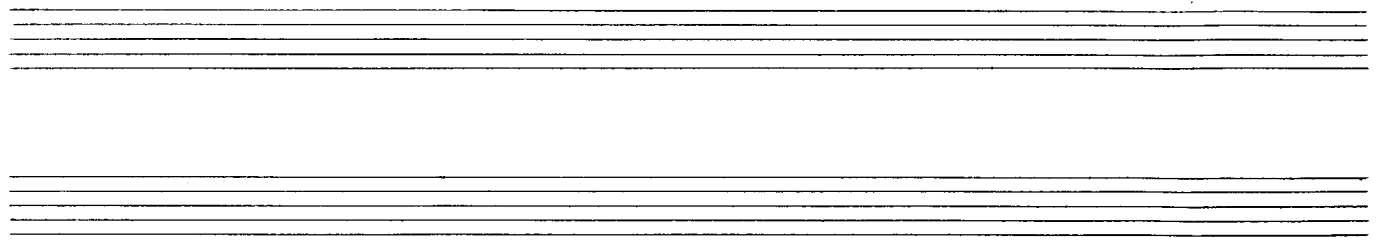
Handwritten musical notation for the first system. The treble staff contains a melodic line with notes including a sharp sign and a flat sign, with a slur over the first two measures. The bass staff contains a bass line with notes and rests, including a circled 'a' marking.

Handwritten musical notation for the second system. The treble staff contains a melodic line with notes and slurs. The bass staff contains a bass line with notes and rests, including a circled '7' marking.

Handwritten musical notation for the third system. The treble staff contains a melodic line with notes and slurs, including a circled '7' marking. The bass staff contains a bass line with notes and rests, including a circled '7' marking and a triplet of notes.

Handwritten musical notation for the fourth system. The treble staff contains a melodic line with notes and slurs, including a circled '7' marking. The bass staff contains a bass line with notes and rests, including a circled '7' marking and a triplet of notes.

15



Handwritten musical notation for the first system. The upper staff features three chords with accents (^) above them. The lower staff features three chords, with a 'b' below the first one. The word "din" is written below the second and third measures, with a double bar line under it.

Handwritten musical notation for the second system. The upper staff features a series of chords with a "f" and an accent (>) above the first one. The lower staff features a series of chords with a "v" above the second one.

Handwritten musical notation for the third system. The upper staff features a series of chords with a circled "p" and an accent (>) above the first one. The lower staff features a series of chords with a "v" above the second one.

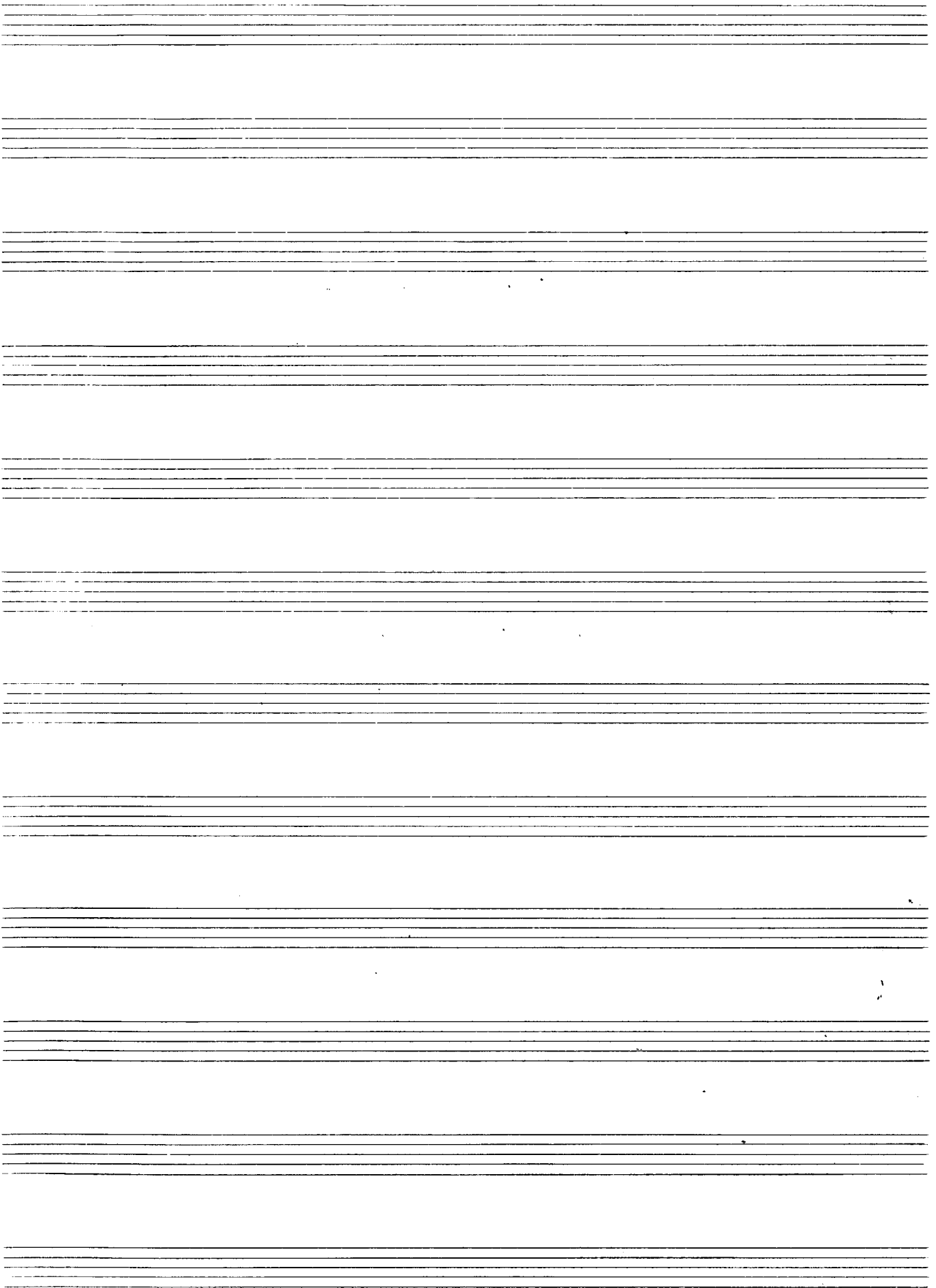
(2. + D.C.)

al  $\phi$

*sempre din* (<sup>+</sup> poco rit)

**CODA**

**ppv**



4

langsam





(2 + qu. rit + dim)

Handwritten musical notation on a grand staff. The word "Lento" is written above the staff. The notation includes a treble clef, a common time signature (C), and a 4/4 time signature. The notes are: a dotted quarter note G4, a dotted quarter note F4, and a dotted quarter note E4. The bass clef part has a common time signature (C) and a flat sign (b) below it. A large, stylized handwritten flourish is present on the right side of the staff.

5

sehr langsam

Handwritten musical notation for the first system, measures 1-3. The system consists of two staves. The left staff is in treble clef with a key signature of one sharp (F#) and a 4/4 time signature. The right staff is in bass clef. Measure 1 contains a whole note chord with notes G2, B2, D3, and F#3. Measure 2 contains a half note chord with notes G2, B2, D3, and F#3, followed by a half note chord with notes G2, B2, D3, and F#3. Measure 3 contains a whole note chord with notes G2, B2, D3, and F#3.

Handwritten musical notation for the second system, measures 4-6. The system consists of two staves. The left staff is in treble clef with a key signature of one sharp (F#) and a 4/4 time signature. The right staff is in bass clef. Measure 4 contains a whole note chord with notes G2, B2, D3, and F#3. Measure 5 contains a half note chord with notes G2, B2, D3, and F#3, followed by a half note chord with notes G2, B2, D3, and F#3. Measure 6 contains a whole note chord with notes G2, B2, D3, and F#3.

Handwritten musical notation for the third system, measures 7-9. The system consists of two staves. The left staff is in treble clef with a key signature of one sharp (F#) and a 4/4 time signature. The right staff is in bass clef. Measure 7 contains a whole note chord with notes G2, B2, D3, and F#3. Measure 8 contains a half note chord with notes G2, B2, D3, and F#3, followed by a half note chord with notes G2, B2, D3, and F#3. Measure 9 contains a whole note chord with notes G2, B2, D3, and F#3.

Handwritten musical notation for the first system. The treble staff contains a melodic line with notes G4, A4, B4, C5, B4, A4, G4, and a half note G4. The bass staff contains a bass line with notes B2, C3, D3, E3, F3, G3, and a half note G3. There are slurs and accents over the notes. The system concludes with two vertical bar lines.

Handwritten musical notation for the second system. The treble staff contains a melodic line with notes G4, A4, B4, C5, B4, A4, G4, and a half note G4. The bass staff contains a bass line with notes B2, C3, D3, E3, F3, G3, and a half note G3. There are slurs and accents over the notes. The system concludes with two vertical bar lines.

Handwritten musical notation for the third system. The treble staff contains a melodic line with notes G4, A4, B4, C5, B4, A4, G4, and a half note G4. The bass staff contains a bass line with notes B2, C3, D3, E3, F3, G3, and a half note G3. There are slurs and accents over the notes. The system concludes with two vertical bar lines.

Handwritten musical notation for the first system. The treble clef staff contains a melodic line with notes G4, A4, Bb4, C5, and D5, with accents (^) above the first three notes. The bass clef staff contains a bass line with notes G3, A3, Bb3, and C4, with accents (^) above the first three notes. A slur covers the first two measures. The system concludes with two measures of sustained chords in both staves.

Handwritten musical notation for the second system. The treble clef staff continues the melodic line with notes D5, C5, Bb4, and A4, with accents (^) above the last three notes. The bass clef staff continues the bass line with notes G3, A3, Bb3, and C4, with accents (^) above the last three notes. A slur covers the first two measures. The system concludes with two measures of sustained chords.

Handwritten musical notation for the third system. The treble clef staff features a more complex melodic line with notes G4, A4, Bb4, C5, D5, and E5, with accents (^) above the last three notes. The bass clef staff continues the bass line with notes G3, A3, Bb3, and C4, with accents (^) above the last three notes. A slur covers the first two measures. The system concludes with two measures of sustained chords.

Handwritten musical notation for the fourth system. The treble clef staff contains notes G4, A4, Bb4, and C5, with accents (^) above the first three notes. The bass clef staff contains notes G3, A3, Bb3, and C4, with accents (^) above the first three notes. A slur covers the first two measures. The system concludes with two measures of sustained chords.

Handwritten musical notation for the first system. The treble staff contains three measures of chords with accents (^) and a fourth measure with a melodic line. The bass staff contains a whole note chord in the first measure, followed by three measures of rhythmic patterns indicated by slanted lines. A large arrow points to the right below the bass staff.

Handwritten musical notation for the second system. The treble staff contains three measures of chords with accents (^) and a fourth measure with a melodic line. The bass staff contains a whole note chord in the first measure, followed by three measures of rhythmic patterns indicated by slanted lines. A bracket with the number '8' spans the last two measures of the treble staff.

*(frei Improvisation)*

Handwritten musical notation for the third system, labeled "(frei Improvisation)". The treble staff features a wavy, improvisatory melodic line. The bass staff contains three measures of chords. The key signature is one flat (B-flat).

Handwritten musical notation for the fourth system. The treble staff features a wavy, improvisatory melodic line. The bass staff contains three measures of chords. The key signature is one flat and one sharp (B-flat and F-sharp).



Handwritten musical notation for the first system. The top staff is in treble clef with a common time signature. It contains three measures of complex chords with various accidentals (flats and naturals) and slurs. The bottom staff shows a melodic line with eighth and sixteenth notes, also featuring accidentals.

Handwritten musical notation for the second system. The top staff is in treble clef with a common time signature. It contains three measures of complex chords with various accidentals and slurs. The bottom staff shows a melodic line with eighth and sixteenth notes, also featuring accidentals.

Handwritten musical notation for the third system. The top staff is in treble clef with a common time signature. It contains three measures of complex chords with various accidentals and slurs. The bottom staff shows a melodic line with eighth and sixteenth notes, also featuring accidentals.

Handwritten musical notation for the fourth system. The top staff is in treble clef with a common time signature. It contains four measures of complex chords with various accidentals and slurs. The bottom staff shows a melodic line with eighth and sixteenth notes, also featuring accidentals.



