

Notenheft

4 Impressionen

1968 für Klavier Solo.

(Eisenstadt - Wien Adolf Scherbaum)

Teil ①

lento

pesante

consciente ovato

Handwritten musical notation for the first system. The right-hand staff contains a melodic line with notes marked with accents (^) and accidentals (b, #). The left-hand staff contains a bass line with notes marked with accents (^) and accidentals (b, #). A circled plus sign (+) is written in the left margin.

Handwritten musical notation for the second system. The right-hand staff contains a melodic line with notes marked with accents (^) and accidentals (b, #). The left-hand staff contains a bass line with notes marked with accents (^) and accidentals (b, #). A circled plus sign (+) is written in the left margin.

Handwritten musical notation for the third system. The right-hand staff contains a melodic line with notes marked with accents (^) and accidentals (b, #). The left-hand staff contains a bass line with notes marked with accents (^) and accidentals (b, #). A circled plus sign (+) is written in the left margin.

Handwritten musical notation for the fourth system. The right-hand staff contains a melodic line with notes marked with accents (^) and accidentals (b, #). The left-hand staff contains a bass line with notes marked with accents (^) and accidentals (b, #). A circled plus sign (+) is written in the left margin. The word "rit" is circled in the right margin.

Adagio

Handwritten musical notation for the first system. The top staff is in treble clef and the bottom staff is in bass clef. The key signature has two sharps (F# and C#). The time signature is 4/4. The notation includes chords, accidentals, and dynamic markings such as accents (^) and a circled 'ff'.

Handwritten musical notation for the second system. The top staff is in treble clef and the bottom staff is in bass clef. The key signature has two sharps (F# and C#). The time signature is 4/4. The notation includes chords, accidentals, and dynamic markings such as accents (^) and a circled 'ff'.

Handwritten musical notation for the third system. The top staff is in treble clef and the bottom staff is in bass clef. The key signature has two sharps (F# and C#). The time signature is 4/4. The notation includes a melodic line in the treble clef with a circled 'dolce' and a circled 'p', and a bass line with a long pedal point. The word 'Pedal' is written below the bass staff.

Handwritten musical notation for the first system. The treble clef staff contains a melodic line with notes and accidentals (flats and sharps) under a slur. The bass clef staff contains a bass line with notes and accidentals, including a sharp sign. Dynamic markings like *mf* and *f* are present.

Handwritten musical notation for the second system. The treble clef staff features a melodic line with a slur and a circled *mf* marking. The bass clef staff has a bass line with notes and slurs. Dynamic markings include *f*.

Handwritten musical notation for the third system. The treble clef staff has a melodic line starting with a *f* dynamic marking. The bass clef staff contains a bass line with notes and slurs. Dynamic markings include *f*.

Handwritten musical notation for the fourth system. The treble clef staff has a melodic line with notes and slurs, and a circled *D.C. al* marking. The bass clef staff has a bass line with notes and slurs, and a circled *G.P.* marking. There are also some handwritten annotations like *for pit.* and *5*.

Teil 2

Presente (Adagio)

Handwritten musical notation for the first system of 'Presente (Adagio)'. It consists of two staves. The top staff is in treble clef with a 4/4 time signature and a circled 'm' marking. The bottom staff is in bass clef. The music is written in a key with one sharp (F#) and contains four measures of music with various notes and rests.

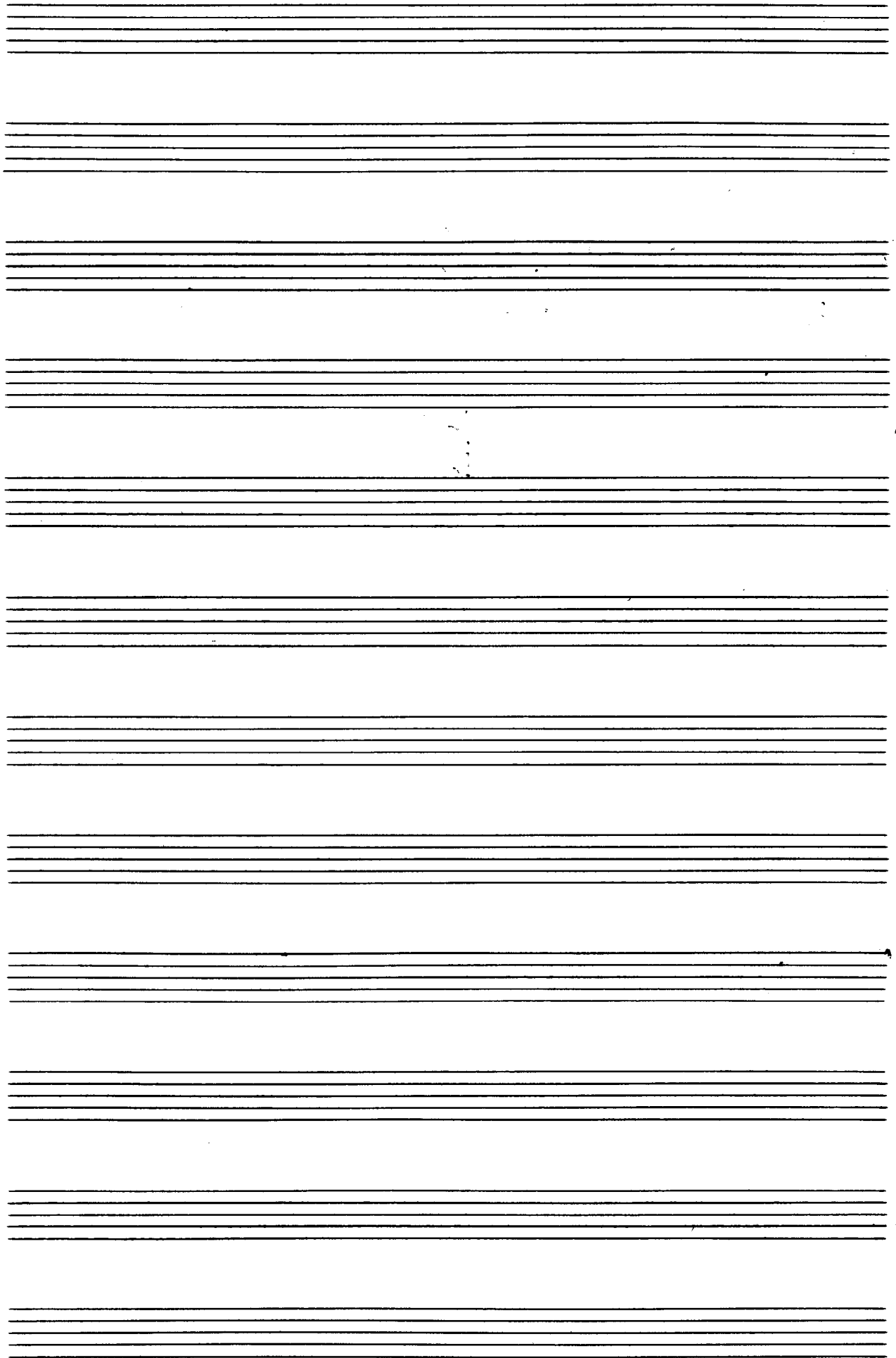
Handwritten musical notation for the second system of 'Presente (Adagio)'. It consists of two staves. The top staff is in treble clef and the bottom staff is in bass clef. The music continues with four measures, featuring more complex rhythmic patterns and accidentals.

Handwritten musical notation for the third system of 'Presente (Adagio)'. It consists of two staves. The top staff is in treble clef and the bottom staff is in bass clef. The music concludes with four measures, ending with a double bar line.

P *pp* (4 + *pp*) 2 + *ff* | 3 + *ppp* (4 + *ppp*)

(agr.)

G.P. folgt D.C. (al) ϕ



Teil ③

schon ruhig fließend

(♩)

Pedal
bis

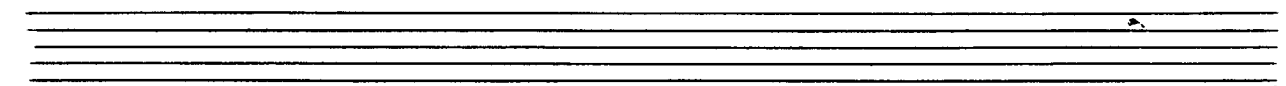
11

Handwritten musical notation for the first system. The treble clef staff contains a melodic line with notes G4, A4, Bb4, Bb4, A4, G4, F#4, G4, A4, Bb4, Bb4, A4, G4. The bass clef staff shows chords: G4-Bb4-Eb4, G4-Bb4-Eb4, and a final chord with the handwritten word "Pedal" and a fermata symbol.

Handwritten musical notation for the second system. The treble clef staff has notes G#4, A4, B4, C5, with some scribbled-out notes. The bass clef staff has chords G4-Bb4-Eb4, G4-Bb4-Eb4, and G4-Bb4-Eb4. Dynamic markings include *f* and *p*.

(letzte + pr. rit + dein)

Handwritten musical notation for the third system. The treble clef staff contains a melodic line with notes G#4, A4, B4, C5, G#4, A4, B4, C5, G#4, A4, B4, C5. The bass clef staff has chords G#4-B4-E4, G#4-B4-E4, and G#4-B4-E4. A dynamic marking *pp* is present. The system ends with a CODA symbol.



subito **ff** Maestoso

accel.

Orshto (of 2)

Handwritten musical notation for the first system. The treble clef contains a melodic line with eighth notes. The bass clef contains chords, some with a circled 'p' above them. A large bracket spans across the system.

Handwritten musical notation for the second system. The treble clef contains a melodic line. The bass clef contains chords, some with a circled 'p' above them. A large bracket spans across the system.

Handwritten musical notation for the third system. The treble clef contains a melodic line with some slurs. The bass clef contains chords. A circled 'p' is written above the first measure. A large bracket spans across the system.

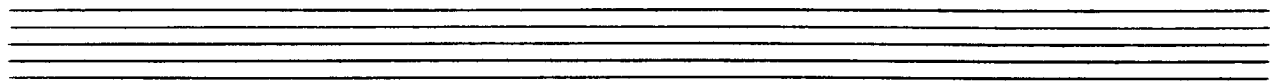
(p) lento

(rit)

2. +

D.C.
al

Handwritten musical notation for the fourth system. The treble clef contains a melodic line. The bass clef contains chords. A circled 'pp' is written above the first measure. A large bracket spans across the system.



gr. rit + dim

pp

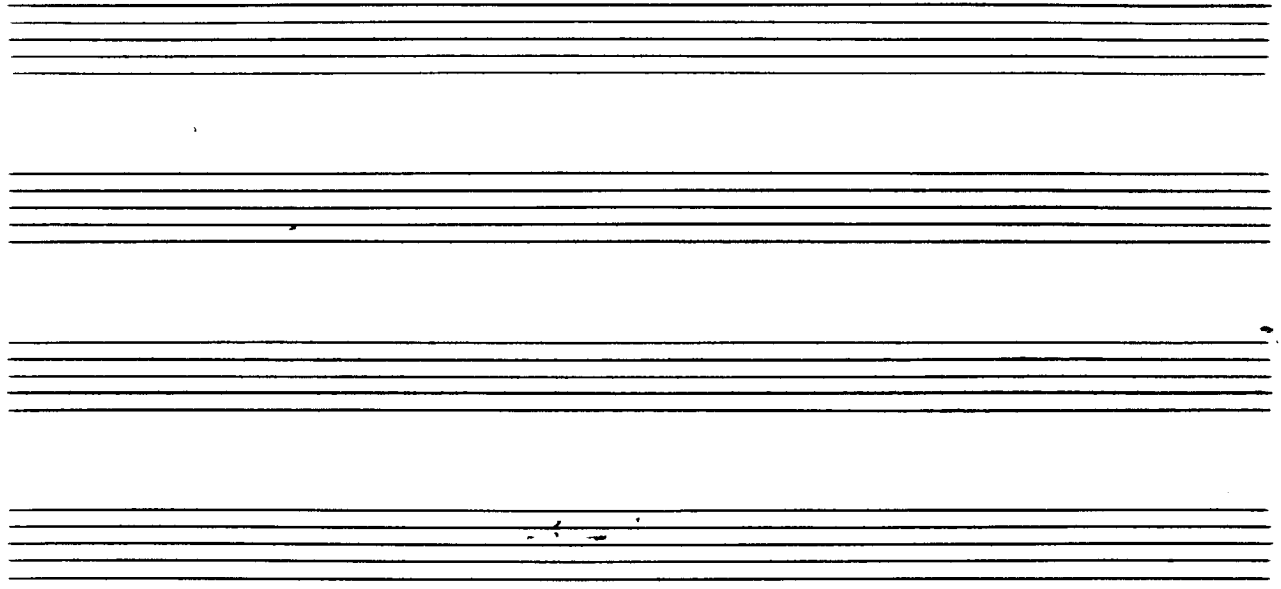
pp

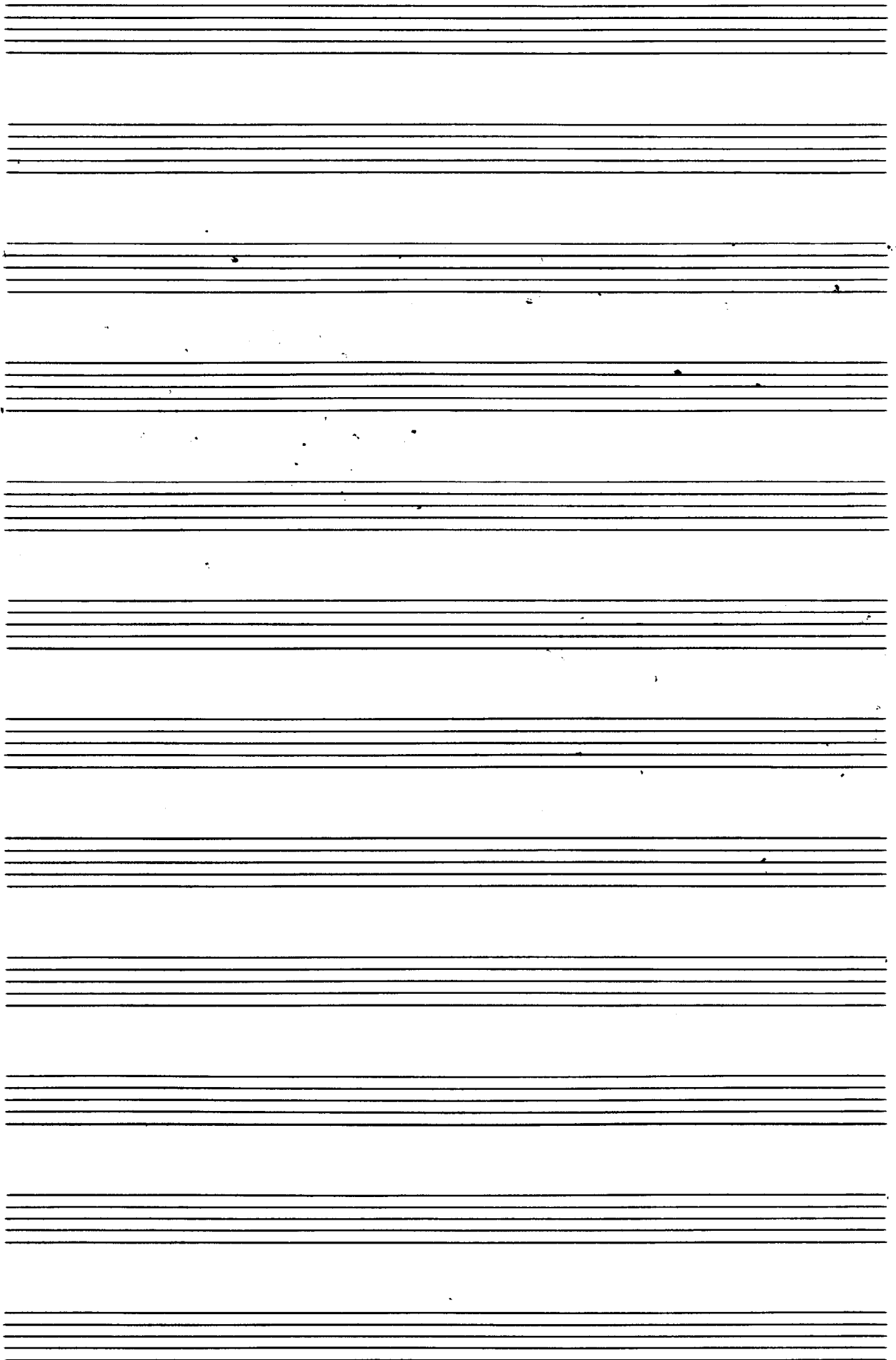
sehr tief Cluster

lunga

pp

pppp





Teil (4)

Andante (ständig steigen im Tempo und Lautstärke)

Handwritten musical notation for the first system, including a treble and bass clef, a 2/4 time signature, and various notes and rests.

Handwritten musical notation for the second system, including a treble and bass clef, a circled 'A' at the end, and a '69' marking above a note.

letzten 8 Takte moderato
(ständige Steigerung)

letzten 8 Takte moderato

(accel. →) D

(letzten 8 Takte nochmal)
⑧

E

(letzten 8 Takte nochmal)
→
⑦

Presto

⑥

(*trant*)

Handwritten musical notation for the first system. The top staff is in treble clef and contains several measures of music with complex chords and melodic lines, including a circled sharp sign (#). The bottom staff is in bass clef and contains a series of notes with a wavy line underneath. There are some handwritten annotations above the first few notes, including a '2' and a '4'.

Handwritten musical notation for the second system. The top staff is in treble clef and contains several measures of music with complex chords and melodic lines. The bottom staff is in bass clef and contains a series of notes with a wavy line underneath. There are some handwritten annotations above the first few notes, including a '4' and a '2'.

(2+ *mod. accel. bis Prestissimo*)

Prestissimo

Handwritten musical notation for the third system. The top staff is in treble clef and contains several measures of music with complex chords and melodic lines. The bottom staff is in bass clef and contains a series of notes with a wavy line underneath. There are some handwritten annotations above the first few notes, including a circled '81' and several accents (^).

app □

(free) (ranch

ppp

p

8

460:

460:

p

400:

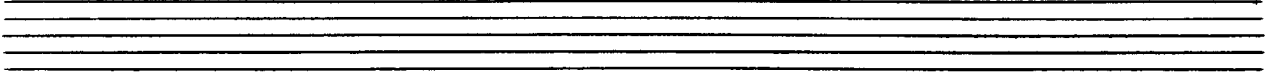
400:

largo (*religioso*)

Handwritten musical notation for the first system. It consists of two staves: a treble clef staff and a bass clef staff. The treble staff begins with a piano (*pp*) dynamic marking. The music features a series of chords and melodic lines with various accidentals (sharps, flats, naturals) and slurs. The bass staff contains a similar harmonic structure with some ledger lines below the staff.

Handwritten musical notation for the second system. It consists of two staves: a treble clef staff and a bass clef staff. The notation continues with complex chordal textures and melodic fragments, including some crossed notes and dynamic markings.

Handwritten musical notation for the third system. It consists of two staves: a treble clef staff and a bass clef staff. The system concludes with a *G.P.* (Grave) marking. The notation includes various accidentals and slurs, maintaining the *largo* tempo.



lento
misterioso

Handwritten musical notation for the first system. The right hand (treble clef) begins with a melody marked *ppp*. The left hand (bass clef) provides accompaniment with chords and rests. The notation includes dynamic markings like *ppp* and *mf*, and performance instructions such as *rit.* (ritardando) and *mf* (mezzo-forte).

Handwritten musical notation for the second system. The right hand continues the melodic line. The left hand features more complex chordal textures. A circled *rit.* marking is present above the staff. The notation includes various dynamics and performance instructions.

D.C. al
Fine

