

4 STÜCKE
für Klarinette -
Streichorchester und Vibraphon.

1968

Adolf Scherbaum

F 153 Scherbaum 383/2

MUSIKSAMMLUNG
ÖSTERR.
NATIONALBIBLIOTHEK

1

22

①

(♩ =)

Handwritten musical score for the first system, measures 1-5. The score is written on five staves. The top staff is in treble clef and contains a melodic line with various dynamics (pp, p, f) and articulation marks. The second staff is in treble clef and contains a rhythmic accompaniment. The third and fourth staves are in bass clef and contain a rhythmic accompaniment. The bottom staff is in bass clef and contains a rhythmic accompaniment. The music is in 4/4 time and features a key signature of one sharp (F#).

Handwritten musical score for the second system, measures 6-10. The score is written on five staves. The top staff is in treble clef and contains a melodic line with various dynamics (pp, p, f) and articulation marks. The second staff is in treble clef and contains a rhythmic accompaniment. The third and fourth staves are in bass clef and contain a rhythmic accompaniment. The bottom staff is in bass clef and contains a rhythmic accompaniment. The music is in 4/4 time and features a key signature of one sharp (F#).

①

Handwritten musical score for the first system, consisting of five staves. The notation is dense and includes various rhythmic values, accidentals, and dynamic markings such as *f* and *pp*. The staves are connected by a brace on the left and a bar line on the right.

Handwritten musical score for the second system, consisting of five staves. The notation is dense and includes various rhythmic values, accidentals, and dynamic markings such as *pp* and *ppp*. The staves are connected by a brace on the left and a bar line on the right.

(2)

Handwritten musical score for the first system, consisting of five staves. The notation is dense and includes various musical symbols such as notes, rests, and dynamic markings. A large slur spans across the top of the first three staves. The notation is somewhat abstract and appears to be a sketch or a specific performance instruction.

Handwritten musical score for the second system, consisting of five staves. The notation includes notes, rests, and dynamic markings. A large slur is present at the beginning of the first staff, and another slur is visible in the second staff. The notation is dense and appears to be a sketch or a specific performance instruction.

③

②

Presto

Handwritten musical score for measures 1-4 of section 2. The score consists of four staves. The top staff is in treble clef with a key signature of one sharp (F#). The second and third staves are in bass clef with a key signature of one sharp (F#). The bottom staff is in bass clef with a key signature of one sharp (F#). The notation is dense with many accidentals, slurs, and dynamic markings.

Handwritten musical score for measures 5-8 of section 2. The score consists of four staves. The top staff is in treble clef with a key signature of one sharp (F#). The second and third staves are in bass clef with a key signature of one sharp (F#). The bottom staff is in bass clef with a key signature of one sharp (F#). The notation is dense with many accidentals, slurs, and dynamic markings.

①

Handwritten musical score for the first system, featuring five staves. The notation includes various notes, rests, and dynamic markings such as *ppc*. The score is written in a complex, expressive style with many accidentals and slurs.

Handwritten musical score for the second system, featuring five staves. The notation includes various notes, rests, and dynamic markings such as *f* and *pp*. A circled '2' is written above the first staff. The score continues with complex notation and accidentals.

②

Handwritten musical score for the first system, consisting of five staves. The notation includes various notes, rests, and dynamic markings such as $p > pp$. The music is written in a complex, expressive style with many slurs and accents.

Handwritten musical score for the second system, consisting of five staves. The notation is dense with many notes and slurs, indicating a complex rhythmic and melodic structure. The music continues from the first system.

③

(4)

accel.

The first system of the handwritten musical score consists of four staves. The top staff contains a melodic line with various accidentals (sharps, flats, naturals) and a slur. The second staff has a rhythmic pattern of eighth notes. The third staff has a similar rhythmic pattern. The fourth staff has a rhythmic pattern with some accidentals. There are several dynamic markings (V) and a fermata-like symbol at the end of the system.

The second system of the handwritten musical score consists of four staves. The notation is similar to the first system, with complex accidentals and rhythmic patterns. There are several dynamic markings (V) and a fermata-like symbol at the end of the system.

5

3

Handwritten musical score for five staves. The top staff has a treble clef, a key signature of one flat, and a 6/8 time signature. It contains a melodic line with slurs and accents. The second and third staves are heavily scribbled out with horizontal lines. The fourth staff has a bass clef and contains a melodic line with slurs. The fifth staff has a treble clef and contains a melodic line with slurs. Dynamics markings like 'pp' and 'p' are scattered throughout.

VIBRAPHON (Pedal)
 (Pedal)
 xfaus)

1

Handwritten musical score for four staves. The top staff has a treble clef and contains a melodic line with notes, accidentals, and dynamic markings 'pp' and 'ppp'. The second and third staves have treble clefs and contain mostly horizontal lines with some notes and accidentals. The bottom staff has a bass clef and contains a melodic line with notes and accidentals. A circled '2' is written below the staves, and a square box with a cross is at the bottom right.

2

Handwritten musical score for five staves. The score is divided into two measures by a vertical bar line. A large slur arches over the top staff. The notation includes various notes, rests, and dynamic markings such as 'pp', 'ppp', and 'fpp'. There are also some unusual symbols and markings, possibly indicating performance techniques or specific articulation.

③

(frei)

VIBR. pp (cluster)

frei

frei

(4)

Handwritten musical score for a string quartet and vibraphone. The score consists of seven staves. The top staff is for the first violin, the second for the second violin, the third for the viola, and the fourth for the cello. The fifth and sixth staves are for the double bass. The seventh staff is for the vibraphone. The music is in 3/4 time and features a melodic line in the first violin with a long slur and a 'piano' dynamic marking. The other instruments provide harmonic support with sustained notes and rhythmic patterns. The word 'Petal' is written at the bottom of the page.

5

Handwritten musical score for a string quartet and vibraphone. The score consists of eight staves. The top staff is for the first violin, the second for the second violin, the third for the viola, and the fourth for the first cello. The fifth and sixth staves are for the second cello and double bass. The seventh and eighth staves are for the vibraphone. The music is in 3/4 time and features dynamic markings such as 'pp' and 'ppp', and various articulation marks like accents and slurs. The notation is handwritten and includes some corrections and annotations.

⑥

Lunga.

Handwritten musical score for strings and woodwinds. The score consists of seven staves. The top staff is a treble clef with a melodic line and a slur over the second measure. The second and third staves are also treble clefs with sustained notes and slurs. The fourth, fifth, and sixth staves are bass clefs with sustained notes and slurs. The seventh staff is a double bass clef with sustained notes. Dynamics include *pp*, *pppp*, and *ppp*. There are also some handwritten markings like $\frac{4}{4}$ and $\frac{3}{4}$.

7

④

Pantissimo

①

Handwritten musical score for the first system. The top staff is in treble clef and contains a melodic line with notes and rests, including some accidentals. Below it are three staves, likely for piano accompaniment, showing chordal structures and rhythmic patterns. The notation is dense and includes various musical symbols such as stems, beams, and dynamic markings.

Handwritten musical score for the second system. The top staff features a highly decorative, wavy melodic line. Below it are three staves with chordal accompaniment, showing dense clusters of notes and dynamic markings. The notation is dense and includes various musical symbols such as stems, beams, and dynamic markings.

②

Handwritten musical score for the first system. The top staff contains a vocal line with notes and slurs. Below it are three staves of string accompaniment, each filled with flowing, curved lines.

so zurede als möglich

Handwritten musical score for the second system. The top staff contains a vocal line with notes and slurs. Below it are three staves of string accompaniment, each with rhythmic patterns and slurs.

③

pp (sempre crescendo →)

(A)

(B)

(B)

(C)

(D)

(4)

Handwritten musical score for the first system, consisting of three staves. The notation is dense with chords and melodic fragments. Above the first two measures, the letters 'E' and 'F' are circled, indicating chord changes. The music is written in a style that suggests a specific harmonic language, possibly related to the composer mentioned in the footer.

Handwritten musical score for the second system, also consisting of three staves. The notation continues the complex textures from the first system, with various rhythmic and harmonic elements. The handwriting is consistent with the first system, showing a high level of detail in the musical notation.

5

(frei)

Handwritten musical score for the first system. The top staff is for Clarinet (C) and the bottom three staves are for Piano. The tempo is marked "(frei)". The music consists of a melodic line in the clarinet and a piano accompaniment. The piano part features chords and rhythmic patterns. A large slur covers the first two measures of the clarinet part.

ruhig

Handwritten musical score for the second system. The tempo is marked "ruhig". The top staff is for Clarinet (C) and the bottom three staves are for Piano. The music consists of a melodic line in the clarinet and a piano accompaniment. The piano part features chords and rhythmic patterns. A large slur covers the first two measures of the clarinet part.

⑥

4 STÜCKE

für Klarinette
und
Klavier

1968 Linz

~~Inge~~ Scherbaum

I.

~~in C~~ (1) in C

Klarinette
in C
notiert

K
L
A
V
I
E
R

Handwritten musical score for the first system. The Clarinet part (top staff) begins with a treble clef and a common time signature. It contains a series of notes with various accidentals (sharps, flats, naturals) and dynamic markings such as *pp* and *sf*. The Piano part (bottom two staves) starts with a grand staff (treble and bass clefs) and a common time signature. It features a series of chords and notes, with dynamic markings like *pp* and *sf*. The system is enclosed in a large hand-drawn bracket on the right side.

Handwritten musical score for the second system. The Clarinet part (top staff) continues with notes and accidentals, including dynamic markings like *f* and *mf*. The Piano part (bottom two staves) continues with chords and notes, maintaining the *pp* dynamic. The system is enclosed in a large hand-drawn bracket on the right side.

Handwritten musical score for the third system. The Clarinet part (top staff) concludes with notes and accidentals, ending with a *pp* dynamic. The Piano part (bottom two staves) concludes with notes and chords, also ending with a *pp* dynamic. A circled word "Fine" is written at the end of the system. Above the system, there is a handwritten note: "(letzte + gws. mit ...) dann ↓".

Handwritten musical score for the first system. It consists of three staves. The top staff is in treble clef and contains a melodic line with notes marked with a sharp sign (#) and a piano (pp) dynamic. The middle staff is in treble clef and contains a piano accompaniment with notes marked with a sharp sign (#) and a piano (pp) dynamic. The bottom staff is in bass clef and contains a piano accompaniment with notes marked with a sharp sign (#) and a piano (pp) dynamic. A rectangular box labeled "Cluster" is drawn under the bottom staff, spanning across two measures.

Handwritten musical score for the second system. It consists of three staves. The top staff is in treble clef and contains a melodic line with notes marked with a flat sign (b) and a forte (f) dynamic. The middle staff is in treble clef and contains a piano accompaniment with notes marked with a flat sign (b) and a forte (f) dynamic. The bottom staff is in bass clef and contains a piano accompaniment with notes marked with a flat sign (b) and a forte (f) dynamic. A rectangular box is drawn under the bottom staff, spanning across two measures.

Handwritten musical score for the third system. It consists of three staves. The top staff is in treble clef and contains a melodic line with notes marked with a flat sign (b) and a piano (pp) dynamic. The middle staff is in treble clef and contains a piano accompaniment with notes marked with a flat sign (b) and a piano (pp) dynamic. The bottom staff is in bass clef and contains a piano accompaniment with notes marked with a flat sign (b) and a piano (pp) dynamic. A rectangular box is drawn under the bottom staff, spanning across two measures.

Handwritten musical score for the first system, consisting of three staves. The top staff contains a melodic line with notes, rests, and dynamic markings such as *pp*. The middle staff has notes with sharp signs and dynamic markings. The bottom staff features a complex rhythmic pattern with many notes, some grouped together, and dynamic markings.

Handwritten musical score for the second system, consisting of three staves. The top staff has notes with sharp signs and dynamic markings. The middle staff contains notes with sharp signs and dynamic markings. The bottom staff shows notes with stems and dynamic markings.

Handwritten musical score for the third system, consisting of three staves. The top staff has notes with sharp signs and dynamic markings, including the word *frei* written above. The middle staff contains notes with sharp signs and dynamic markings. The bottom staff shows notes with stems and dynamic markings.

D. Scherba

Fin

Handwritten musical score for the first system. It features a treble clef and a key signature of one sharp (F#). The notation includes several notes, rests, and dynamic markings such as 'ppp' and '>'. There are also some handwritten annotations and a box containing the word 'Fin' at the end of the system.

A series of ten empty musical staves, each consisting of five horizontal lines, arranged vertically on the page.

2.

Presto

ff in C

ff

p

hart (stacc.)

ff

p

ff

p

Handwritten musical score for the first system. The top staff is in treble clef and contains a melodic line with a slur over the first two measures. The bottom two staves are a grand staff (treble and bass clefs) with piano accompaniment. The key signature has one sharp (F#) and the time signature is 4/4. The notation includes various rhythmic values, accidentals, and dynamic markings.

Handwritten musical score for the second system. It continues the melodic line in the top staff and the piano accompaniment in the grand staff. The notation includes slurs, ties, and various rhythmic patterns.

Handwritten musical score for the third system. It concludes the piece with a final cadence in the top staff and piano accompaniment in the grand staff. The notation includes a final chord and a double bar line.

Handwritten musical score for the first system. The top staff is for the clarinet, showing a melodic line with slurs and a circled 'p' dynamic marking. The piano accompaniment consists of chords in the right hand and single notes in the left hand, with a 'pp' marking.

Handwritten musical score for the second system. The clarinet part continues with slurs and dynamics. The piano accompaniment features chords and a 'mf' marking.

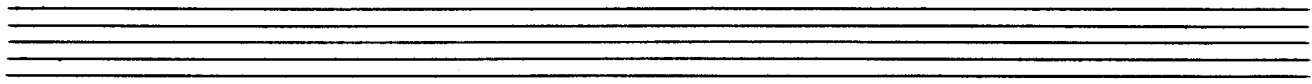
Handwritten musical score for the third system. The clarinet part includes slurs and dynamics. The piano accompaniment features chords and a circled 'f' marking.

Handwritten musical score for the first system. It consists of three staves. The top staff has a treble clef and contains a whole rest. The middle staff has a treble clef and contains two quarter notes with accents, followed by two more quarter notes with accents. The bottom staff has a bass clef and contains a complex rhythmic pattern with slurs and ties, including a circled 'ff' marking.

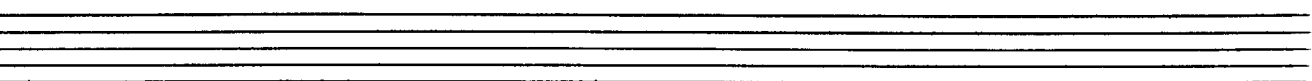
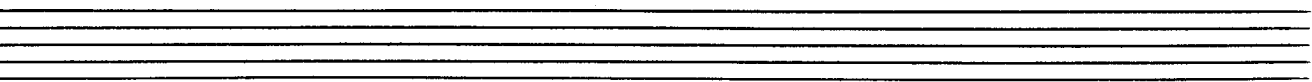
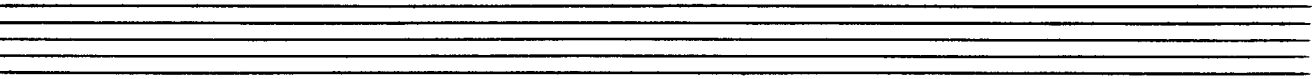
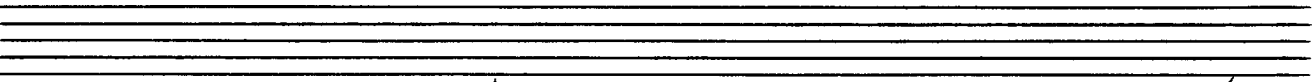
Handwritten musical score for the second system. It consists of three staves. The top staff has a treble clef and contains a wavy line with a circled treble clef above it. The middle staff has a treble clef and contains two quarter notes with sharps, followed by two more quarter notes with sharps. The bottom staff has a bass clef and contains a complex rhythmic pattern with slurs and ties, including a circled 'ff' marking.

Handwritten musical score for the third system. It consists of three staves. The top staff has a treble clef and contains a wavy line with a circled 'p' marking. The middle staff has a treble clef and contains two quarter notes with sharps, followed by two more quarter notes with sharps. The bottom staff has a bass clef and contains a complex rhythmic pattern with slurs and ties, including a circled 'pp' marking.

2. + D.C.
 al
 Fine



2. x accel →



The image shows a page of handwritten musical notation on ten staves. The first three staves contain musical notation. The first staff is in treble clef and contains a series of notes with accidentals (sharps) and rests. The second staff is in bass clef and contains similar notation. The third staff is also in bass clef and contains a few notes and rests. The fourth staff has a large, dark scribble that obscures any original notation. The remaining six staves are empty.

3

Canto

p

in C

Handwritten musical score for the first system. It consists of a piano staff (treble clef) and a grand staff (treble and bass clefs). The piano staff contains a melodic line with notes and slurs. The grand staff contains accompaniment with chords and moving lines. Dynamics include *pp* (pianissimo) and *p* (piano). There are various phrasing slurs and accents throughout the system.

(jedes Takt
weites Pedal

Handwritten musical score for the second system, continuing from the first. It features the same piano and grand staves. The piano staff continues the melodic line with slurs and accents. The grand staff continues the accompaniment. Dynamics include *pp* and *p*. There are various phrasing slurs and accents throughout the system.

Handwritten musical score for the first system. It consists of three staves: a single treble clef staff at the top, and a grand staff (treble and bass clefs) below. The music is marked *pp* (pianissimo). The top staff contains a melodic line with notes including sharps and flats, and a long slur spanning across the system. The grand staff contains accompaniment with chords and moving lines, also featuring slurs and dynamic markings.

Handwritten musical score for the second system, continuing from the first. It features the same three-staff layout. The music is marked *pp*. The melodic line in the top staff continues with complex intervals and a long slur. The accompaniment in the grand staff includes chords and rhythmic patterns, with various slurs and dynamic markings.

Handwritten musical score for the third system, concluding the piece. It follows the same three-staff format. The music is marked *pp*. The top staff ends with a few notes and a slur. The grand staff concludes with chords and rests. A box containing the word "FINE" is written in the right margin. The system ends with a double bar line.

frei (in B)

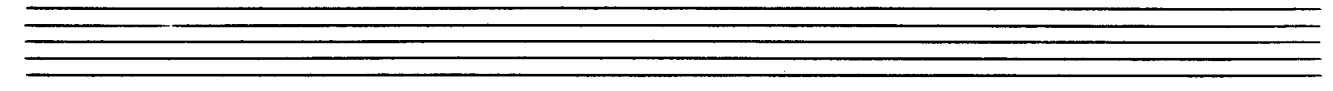
pp

pp

Clossen

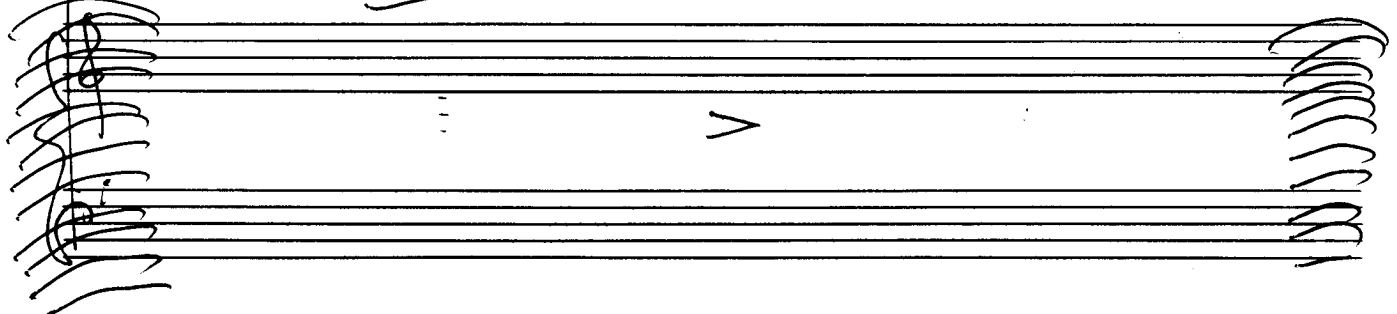
mp

f



Handwritten musical notation for a piano part. The notation is heavily scribbled over with dark ink. A circled 'C' is written above the first staff. The word "Pedal" is written below the first staff, followed by some illegible markings.

Handwritten musical notation for a piano part. The word "Pizz" is written above the first staff. The notation includes several notes with accidentals (sharps and flats) and a circled '7'. A circled 'B' is written above the first staff.



Handwritten musical notation for a piano part. The word "Pizz" is written above the first staff. The notation includes several notes with accidentals and a circled '7'. A circled 'B' is written above the first staff. The word "2. & D.C." is written above the second staff, followed by "al Fine". The word "Pedal" is written below the first staff. The notation includes dynamic markings: $p > pp$ and ppp .

4.

Prestissimo

in C

Handwritten musical score for the first system. It consists of three staves: a single treble clef staff at the top, and a grand staff (treble and bass clefs) below. The top staff begins with a treble clef, a key signature of one sharp (F#), and a 3/4 time signature. The first measure contains a half note G4 with a dynamic marking of *pp*. The second measure contains a half note A4 with a sharp sign. The third measure contains a half note B4 with a sharp sign. The grand staff below contains accompaniment for the first two measures, with a dynamic marking of *pp*. The first measure of the grand staff has a 3/4 time signature and contains chords in the right and left hands. The second and third measures of the grand staff contain rests for both hands.

Handwritten musical score for the second system, continuing from the first. It consists of three staves. The top staff continues with a half note C5 with a sharp sign, a half note D5 with a sharp sign, and a half note E5 with a sharp sign. The grand staff below contains accompaniment for the first measure, with a dynamic marking of *pp*. The second and third measures of the grand staff contain rests for both hands.

Handwritten musical score for the third system. It consists of three staves. The top staff begins with a treble clef, a key signature of one sharp (F#), and a 3/4 time signature. The first measure contains a half note F#5 with a dynamic marking of *mf*. The second measure contains a half note G5 with a sharp sign. The third measure contains a half note A5 with a sharp sign. The grand staff below contains accompaniment for the first two measures, with a dynamic marking of *mf*. The first measure of the grand staff has a 3/4 time signature and contains chords in the right and left hands. The second and third measures of the grand staff contain rests for both hands.

in B

Handwritten musical score for the first system. It features a treble clef staff with a circled 'm C' above it. The first measure contains a chord with notes G#4, A#4, B4, and C5. The second measure is a whole rest. The third measure contains a chord with notes G#4, A#4, B4, and C5. The piano accompaniment consists of three staves: the left hand has a circled 'H' and a circled '8', and the right hand has a circled '8'. The piano part shows chords in the first and third measures, with rests in the second.

Handwritten musical score for the second system. It features a treble clef staff with a circled 'm C' above it. The first measure contains a chord with notes G#4, A#4, B4, and C5. The second measure is a whole rest. The third measure contains a chord with notes G#4, A#4, B4, and C5. The piano accompaniment consists of three staves: the left hand has a circled 'H' and a circled '8', and the right hand has a circled '8'. The piano part shows chords in the first and third measures, with rests in the second.

Handwritten musical score for the third system. It features a treble clef staff with a circled 'm C' above it. The first measure contains a chord with notes Gb4, Ab4, Bb4, and C5. The second measure contains a chord with notes Gb4, Ab4, Bb4, and C5. The third measure contains a chord with notes Gb4, Ab4, Bb4, and C5. The piano accompaniment consists of three staves: the left hand has a circled 'H' and a circled '8', and the right hand has a circled '8'. The piano part shows chords in the first and third measures, with rests in the second.

pp =

(in B)

pp

f =

ⓕ =

in B

so schnell als möglich

Handwritten musical notation for the first system. It consists of three staves. The top staff is a treble clef with a circled "in C" and three measures of notes: $\#F$, $\#G$, and bA . The middle staff is a treble clef with a sharp sign $\#$ in the first measure, and notes bB , $\#C$, and bD in the second measure. The bottom staff is a bass clef with notes $\#E$, $\#F$, and bG in the first measure, and rests in the second and third measures.

Handwritten musical notation for the second system. It consists of three staves. The top staff is a treble clef with notes bA , $\#B$, and $\#C$. The middle staff is a treble clef with notes bB , $\#C$, and bD . The bottom staff is a bass clef with notes $\#E$, $\#F$, and bG in the first measure, and rests in the second and third measures.

Handwritten musical notation for the third system. It consists of three staves. The top staff is a treble clef with notes bA , $\#B$, $\#C$, and bD . The middle staff is a treble clef with notes bB , $\#C$, and bD . The bottom staff is a bass clef with notes $\#E$, $\#F$, and bG in the first measure, and notes $\#A$, $\#B$, and bC in the second measure. A box labeled "FINE" is in the top right corner. A circled sharp sign $\#$ is in the bottom right.

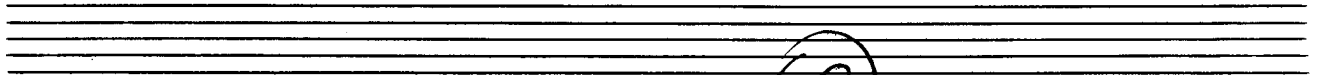
pp (sempre cresc. →)

in C

Handwritten musical score for the first system. The top staff is in treble clef and contains three measures of music. The first measure starts with a piano (*pp*) dynamic and features a series of notes with accidentals (sharps and naturals). The second and third measures continue the melodic line. The bottom two staves (grand staff) contain rests for the first two measures, and a single note in the third measure.

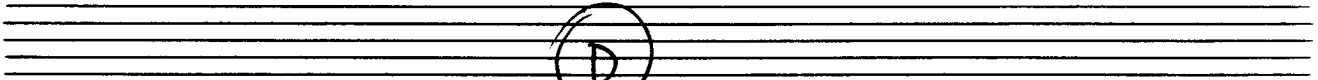
Handwritten musical score for the second system. The top staff begins with a circled letter 'A' above the first measure. It contains three measures of music. The bottom staff begins with a circled 'pp' dynamic marking above the first measure. It contains three measures of music, including some notes with accidentals.

Handwritten musical score for the third system. The top staff begins with a circled letter 'B' above the first measure. It contains three measures of music. The bottom staff begins with a circled 'mf' dynamic marking above the first measure. It contains three measures of music, including some notes with accidentals.



C

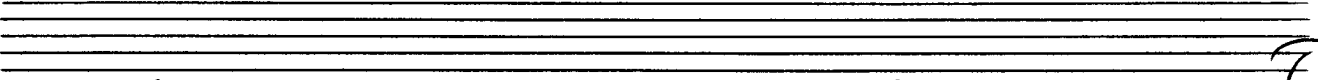
Handwritten musical notation for system C, consisting of three staves. The top staff is in treble clef with a key signature of one sharp (F#). The middle and bottom staves are in bass clef. The notation includes various notes, rests, and dynamic markings.



D

E

Handwritten musical notation for system D, consisting of three staves. The top staff is in treble clef with a key signature of one sharp (F#). The middle and bottom staves are in bass clef. The notation includes various notes, rests, and dynamic markings.



F

Handwritten musical notation for system E, consisting of three staves. The top staff is in treble clef with a key signature of one sharp (F#). The middle and bottom staves are in bass clef. The notation includes various notes, rests, and dynamic markings.

Handwritten musical score for the first system. The top staff is a treble clef with a melodic line. The bottom two staves are a grand staff (treble and bass clefs) with piano accompaniment. The music is in a key with one sharp (F#) and a 4/4 time signature. The first system contains four measures of music.

Handwritten musical score for the second system. The notation continues with a treble clef staff and a grand staff. The second system contains four measures of music.

Handwritten musical score for the third system. The notation concludes with a treble clef staff and a grand staff. The third system contains four measures of music.

frei

ruhig

D.C. al Fine