

L.v. BEETHOVEN



# NOTENHEFT

W.A. MOZART



F. SCHUBERT



J. HAYDN



J. STRAUSS



MADE IN AUSTRIA

3 Teile) über spanische Motive). —

Konzert für Violine 1968

Edolf Kluckner

*Allegro con brio*

①

②

③

④

⑤

15

2

16

17

8

Handwritten musical score for system 8, measures 1-5. The top staff is in treble clef with a key signature of one sharp (F#) and contains a melodic line with slurs and accents. The bottom staff is in bass clef with a key signature of one sharp (F#) and contains a bass line with triplets and slurs. A circled '8' is in the top right corner.

9

Handwritten musical score for system 9, measures 6-10. The top staff is in treble clef with a key signature of one flat (Bb) and contains a melodic line with slurs and accents. The bottom staff is in bass clef with a key signature of one flat (Bb) and contains a bass line with triplets and slurs. A circled '9' is in the top right corner.

10

Handwritten musical score for system 10, measures 11-15. The top staff is in treble clef with a key signature of one flat (Bb) and contains a melodic line with slurs and accents. The bottom staff is in bass clef with a key signature of one flat (Bb) and contains a bass line with slurs. A circled '10' is in the top right corner. The word "dim" is written below the bottom staff.

10

11

12

13

14

Handwritten musical score for system 15. The system consists of two staves. The top staff is a guitar staff with a treble clef and a key signature of one flat (B-flat). It shows two chords: a D7 chord (x02321) and a D7b9 chord (x02321). The bottom staff is a piano staff with a bass clef and a key signature of one flat. It features a triplet of eighth notes in the right hand and a triplet of eighth notes in the left hand. A circled number '15' is in the top right corner.

Handwritten musical score for system 16. The system consists of two staves. The top staff is a guitar staff with a treble clef and a key signature of one flat. It shows a long melodic line starting with a D7 chord (x02321) and continuing with a series of notes. The bottom staff is a piano staff with a bass clef and a key signature of one flat. It features a series of notes in the right hand and a series of notes in the left hand. A circled number '16' is in the top right corner.

Handwritten musical score for system 17. The system consists of two staves. The top staff is a guitar staff with a treble clef and a key signature of one flat. It shows a series of notes in the right hand and a series of notes in the left hand. The bottom staff is a piano staff with a bass clef and a key signature of one flat. It features a series of notes in the right hand and a series of notes in the left hand. A circled 'P' is in the bottom staff. A circled number '17' is in the top right corner.

17

Handwritten musical score for system 17, measures 1-4. The score is written on three staves. The top staff contains a melodic line with various chords and accidentals, including a circled '17' at the beginning. The middle staff shows a bass line with a triplet of eighth notes in the first measure. The bottom staff contains a bass line with a circled '18' at the end of the system.

19

Handwritten musical score for system 19, measures 1-4. The score is written on three staves. The top staff contains a melodic line with various chords and accidentals. The middle staff shows a bass line with a triplet of eighth notes in the first measure. The bottom staff contains a bass line with a circled '19' at the end of the system.

20

Handwritten musical score for system 20, measures 1-5. The score is written on three staves. The top staff contains a melodic line with various chords and accidentals. The middle staff shows a bass line with a circled '20' at the end of the system. The bottom staff contains a bass line with a circled '21' at the end of the system.

(A) solo from (breit)

(A)

Handwritten musical score for system A, measures 1-4. The score is written on a grand staff with treble and bass clefs. Measure 1 contains a whole note chord with a sharp sign. Measure 2 contains a half note chord with a sharp sign. Measure 3 contains a half note chord with a sharp sign. Measure 4 contains a half note chord with a sharp sign. The notes are mostly in the treble clef.

(breit)

(B)

Handwritten musical score for system B, measures 1-4. The score is written on a grand staff. Measure 1 contains a whole note chord with a flat sign. Measure 2 contains a half note chord with a flat sign. Measure 3 contains a half note chord with a flat sign. Measure 4 contains a half note chord with a flat sign. The notes are mostly in the treble clef.

(A)

Handwritten musical score for system C, measures 1-4. The score is written on a grand staff. Measure 1 contains a whole note chord with a flat sign. Measure 2 contains a half note chord with a flat sign. Measure 3 contains a half note chord with a flat sign. Measure 4 contains a half note chord with a flat sign. The notes are mostly in the treble clef.

(C)

(A)



Lento

(C) (D)

(xit)

D.C. al  
CODA

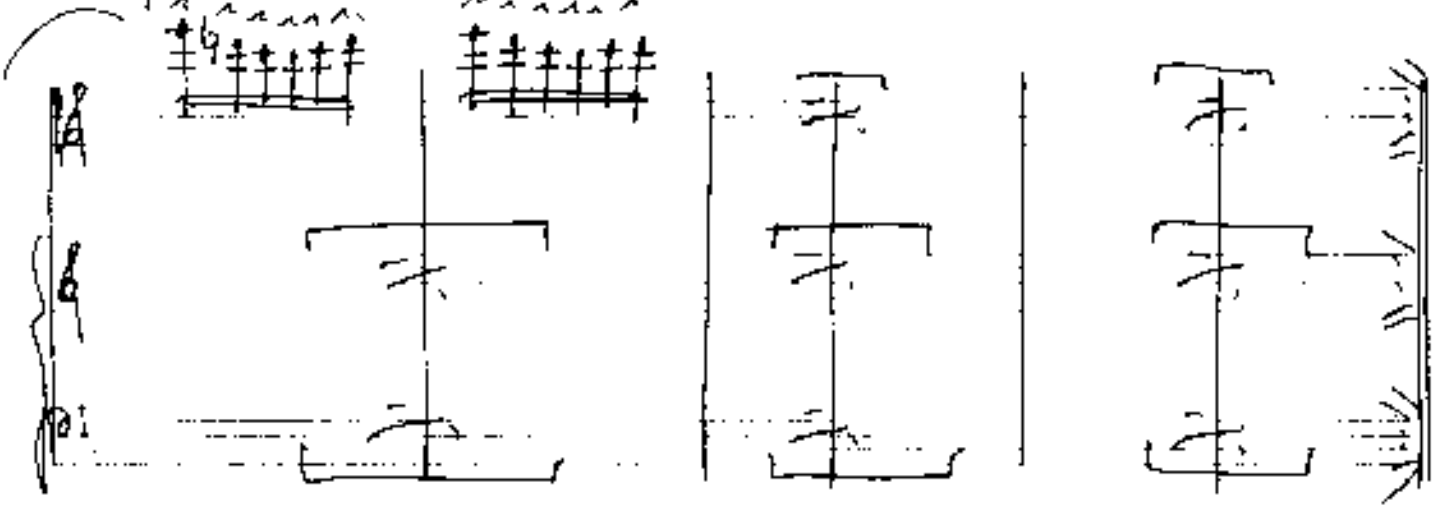
accel. (2to Prestissimo) —

CODA

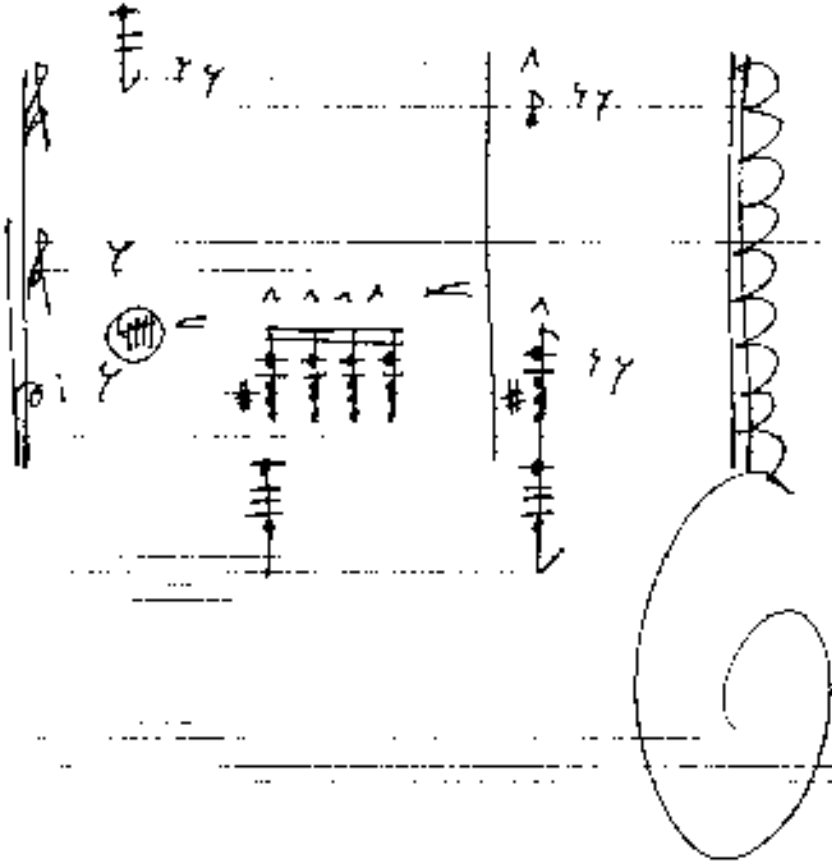
CODA

work acced.

81



81



# No. 2. (einfach)

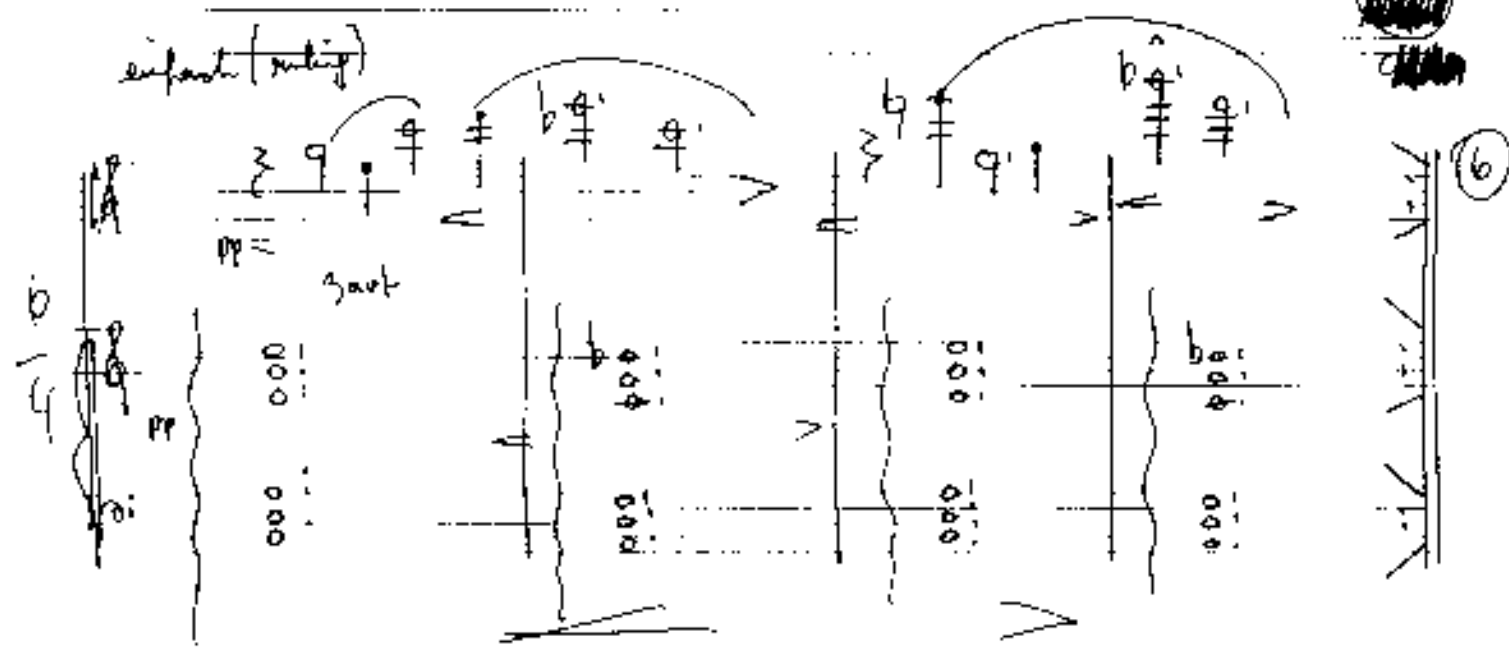
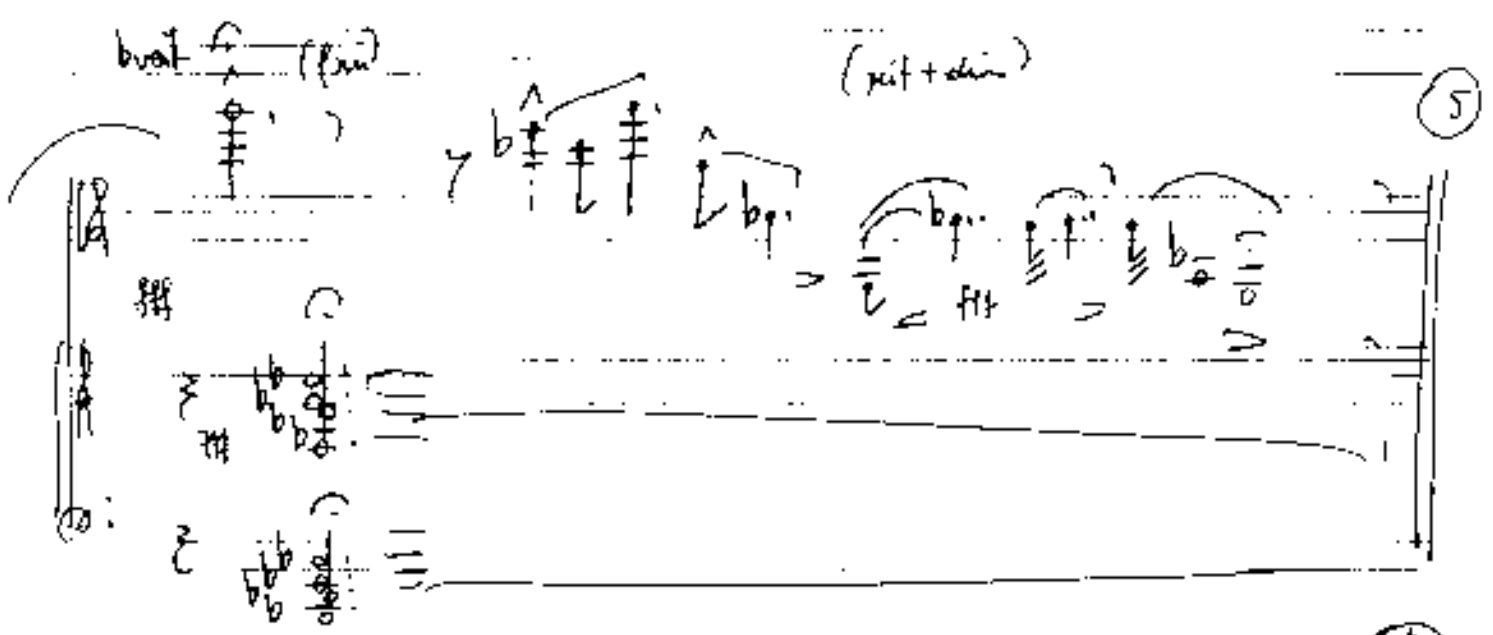
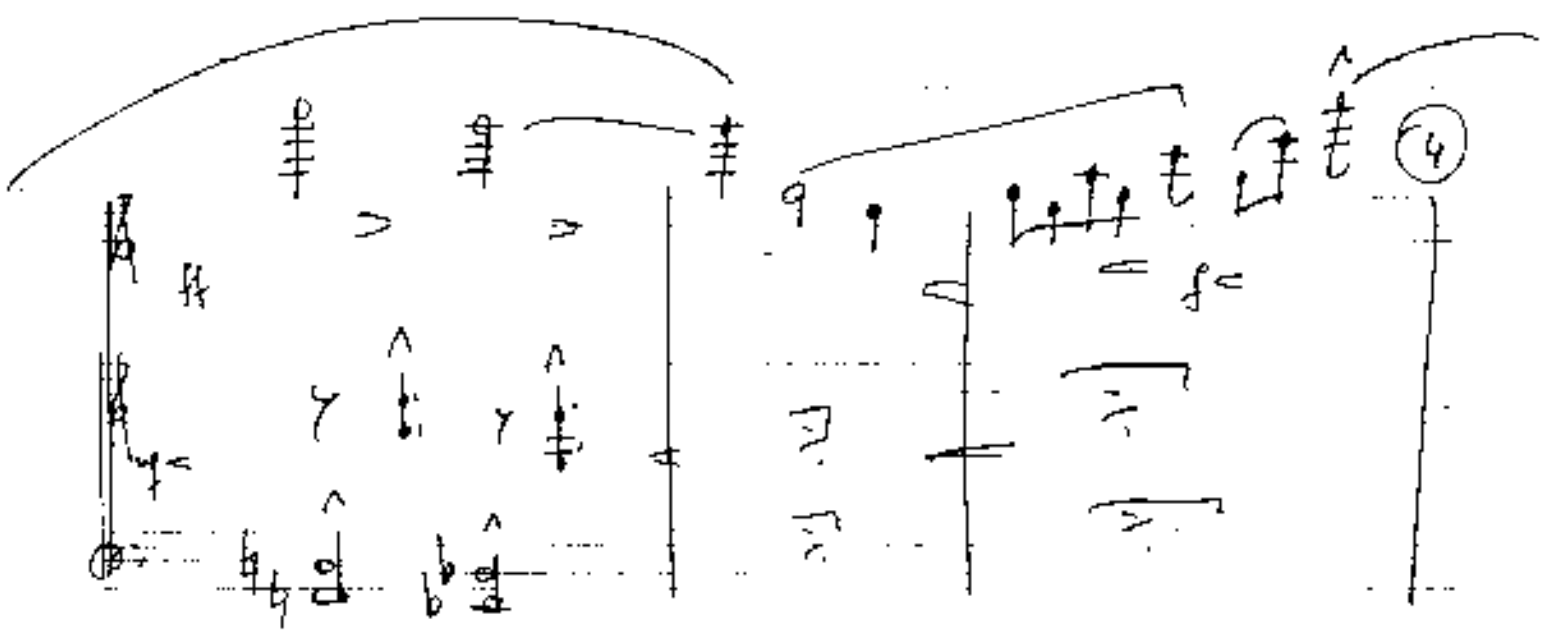
ruhig - einfach

*Lento*

①

②

③



⑥ solo bewegt) aufgeregt)

⑦

Handwritten musical score for measures 6 and 7. Measure 6 features a treble clef with a circled '7' and a bass clef with a circled '6'. Measure 7 has a treble clef with a circled '7' and a bass clef with a circled '6'. The music includes various notes, rests, and dynamic markings.

Handwritten musical score for measures 7 and 8. Measure 7 has a treble clef with a circled '8' and a bass clef with a circled '7'. Measure 8 has a treble clef with a circled '8' and a bass clef with a circled '7'. The music includes various notes, rests, and dynamic markings.

Handwritten musical score for measures 8 and 9. Measure 8 has a treble clef with a circled '9' and a bass clef with a circled '8'. Measure 9 has a treble clef with a circled '9' and a bass clef with a circled '8'. The music includes various notes, rests, and dynamic markings.

Handwritten musical score for system 10. The system consists of three staves. The top staff is for guitar, showing a series of chords with upward-pointing accents (^) above them. The middle staff is for piano, featuring a melodic line with a triplet of eighth notes in the first measure. The bottom staff is for guitar, with a few notes and an upward-pointing accent (^) in the first measure. A circled number '10' is located in the top right corner.

Handwritten musical score for system 11, labeled "allegro" in the center. The system consists of three staves. The top staff is for guitar, with several chords and upward-pointing accents (^). The middle staff is for piano, with a melodic line and a triplet of eighth notes in the first measure. The bottom staff is for guitar, with a few notes and an upward-pointing accent (^) in the first measure. A circled number '11' is located in the top right corner.

Handwritten musical score for system 12, labeled "Prestissimo" in the top left. The system consists of three staves. The top staff is for guitar, showing a complex melodic line with many notes and upward-pointing accents (^). The middle staff is for piano, with a few notes and upward-pointing accents (^). The bottom staff is for guitar, with a few notes and upward-pointing accents (^). A circled number '12' is located in the top right corner.

sehr breit (frei) (sehr breit - frei)

Lento

wie ein Chorus

ff

(frei)

73

(sehr breit) (frei) - gehalten - (poco rit)

ff

poco rit

74

75

sch. (cont.)

15

Handwritten musical score for measures 15-16. The score is written on a grand staff. The piano part is in 6/4 time and includes dynamic markings such as *pp* and *p*. The pedal part is marked *Pedal pp* and *Pedal*. The notation includes notes, rests, and slurs.

16

Handwritten musical score for measures 17-18. The score is written on a grand staff. The piano part is in 4/4 time and includes dynamic markings such as *pp* and *p*. The pedal part is marked *Pedal* and *p*. The notation includes notes, rests, and slurs.

Handwritten musical score for measures 19-20. The score is written on a grand staff. The piano part is in 4/4 time and includes dynamic markings such as *pp* and *p*. The pedal part is marked *Pedal pp* and *Pedal*. The notation includes notes, rests, and slurs.



[Faint, illegible text consisting of multiple lines of horizontal lines and scattered characters, possibly representing a document or form.]

Saty (3)

Rondo

Primo (solo except)

①

Handwritten musical notation for the first system, measures 1-4. It features a treble clef with a key signature of one sharp (F#) and a common time signature. The melody starts with a quarter note, followed by a triplet of eighth notes, and ends with a quarter note. The bass line consists of a series of quarter notes. A circled '1' is in the top right corner.

②

③

Handwritten musical notation for the second system, measures 5-8. The treble clef has a key signature of two sharps (F# and C#). The melody is more complex, with eighth and sixteenth notes. The bass line has some rests and quarter notes. A circled '2' is above the first measure, and a circled '3' is in the top right corner.

④

ff

Handwritten musical notation for the third system, measures 9-12. The treble clef has a key signature of one flat (Bb). The melody features a descending line with eighth notes and quarter notes. The bass line has a long note with a fermata. A circled '4' is in the top right corner, and 'ff' is in a circle in the bottom left corner.

④

⑤

⑥

⑦

Handwritten musical score for system 8. The system consists of two staves: a treble clef staff on top and a bass clef staff on the bottom. The treble staff contains several measures with notes, some marked with accents (^) and slurs. There are also some vertical lines and rests. The bass staff contains notes with flats (b) and some rests. A circled number '8' is located in the top right corner of the system.

Handwritten musical score for system 9. The system consists of two staves: a treble clef staff on top and a bass clef staff on the bottom. The treble staff contains several measures with notes, some marked with accents (^) and slurs. There are also some vertical lines and rests. The bass staff contains notes with flats (b) and some rests. A circled number '9' is located in the top right corner of the system.

Handwritten musical score for system 10. The system consists of two staves: a treble clef staff on top and a bass clef staff on the bottom. The treble staff contains several measures with notes, some marked with accents (^) and slurs. There are also some vertical lines and rests. The bass staff contains notes with flats (b) and some rests. A circled number '10' is located in the top right corner of the system. A circled 'ff' (fortissimo) dynamic marking is located at the bottom right of the system.

10

rausgehend

11

11

12

12

mit hart stacc.

13

14

ff

Pedal | fließend

15

Pedal

16

ff

Handwritten musical notation for the first system, measures 16-17. The system includes a treble clef, a key signature of one sharp (F#), and a 7/6 time signature. Measure 16 features a melodic line with a triplet of eighth notes and a bass line with a half note. Measure 17 contains a melodic line with a triplet of eighth notes and a bass line with a half note. A circled number '16' is at the beginning, and a circled number '17' is at the end.

Handwritten musical notation for the second system, measures 18-20. The system includes a treble clef, a key signature of one sharp (F#), and a 7/6 time signature. Measure 18 features a melodic line with a triplet of eighth notes and a bass line with a half note. Measure 19 contains a melodic line with a triplet of eighth notes and a bass line with a half note. Measure 20 contains a melodic line with a triplet of eighth notes and a bass line with a half note. A circled number '18' is at the beginning, and a circled number '20' is at the end.

Handwritten musical notation for the third system, measures 21-23. The system includes a treble clef, a key signature of one sharp (F#), and a 7/6 time signature. Measure 21 features a melodic line with a triplet of eighth notes and a bass line with a half note. Measure 22 contains a melodic line with a triplet of eighth notes and a bass line with a half note. Measure 23 contains a melodic line with a triplet of eighth notes and a bass line with a half note. A circled number '21' is at the beginning, and a circled number '23' is at the end.

breit (frei rubato) appassionato

3/4 (♩)

19

Handwritten musical score for exercise 19, measures 1-4. The score is in treble clef with a key signature of one sharp (F#). It features a melody in the upper voice with slurs and accents, and a bass line with sustained notes and a pedal point. The tempo/mood is 'breit (frei rubato) appassionato'.

20

Handwritten musical score for exercise 20, measures 1-4. The score is in treble clef with a key signature of one flat (Bb). It features a melody in the upper voice with slurs and accents, and a bass line with sustained notes and a pedal point. The tempo/mood is 'breit (frei rubato) appassionato'.

rubato (♩) frei

21

Handwritten musical score for exercise 21, measures 1-4. The score is in treble clef with a key signature of one sharp (F#). It features a melody in the upper voice with slurs and accents, and a bass line with sustained notes and a pedal point. The tempo/mood is 'rubato (♩) frei'.



21

22

rubato (frei) -

23

ifrei - rit + di

24

(Zweit) ruhig

25

Handwritten musical score for page 25. It consists of three systems of staves. The first system shows a treble clef staff with notes and rests, and a bass clef staff with a whole rest. The second system has two treble clef staves with notes and rests. The third system has two treble clef staves with notes and rests. Dynamic markings include  $p$ ,  $f$ , and  $mf$ . There are also some handwritten annotations like  $7 >$  and  $p >$ .

varians

26

Handwritten musical score for page 26. It consists of three systems of staves. The first system has two treble clef staves with notes and rests. The second system has two treble clef staves with notes and rests. The third system has two treble clef staves with notes and rests. Dynamic markings include  $p$ ,  $f$ , and  $mf$ . There are also some handwritten annotations like  $b$  and  $b$ .

27

Handwritten musical score for page 27. It consists of three systems of staves. The first system has two treble clef staves with notes and rests. The second system has two treble clef staves with notes and rests. The third system has two treble clef staves with notes and rests. Dynamic markings include  $f$  and  $p$ . There is a circled word "auf + da" in the middle of the second system. There are also some handwritten annotations like  $b$  and  $b$ .

CODA

27 Lento (♩)

28

29

Lento

(rit)

30

Prestissimo (Solo Violina) — ständige Steigerung →

31

32

33

34

sehr bewegt

33

34

35

36

37

38

39

Handwritten musical score for measures 38 and 39. Measure 38 shows a treble clef with a whole note chord and a bass clef with a whole note chord. Measure 39 features a treble clef with a melodic line of eighth notes and a bass clef with a whole note chord. Dynamics include pp and p.

40

Handwritten musical score for measure 40. The treble clef has a melodic line with many accidentals and a final chord. The bass clef has a whole note chord. A circled 'f' is present in the bass line.

41

D.C.

Handwritten musical score for measure 41. The treble clef has a melodic line with a triplet and a final chord. The bass clef has a whole note chord. Dynamics include pp and ppp. A circled 'D.C.' is present.

⊕ CODA (Satz 3)

*Pianissimo*

Handwritten musical score for the first system. It features three staves: a treble clef staff with a key signature of one sharp (F#) and a common time signature (C), a grand staff (treble and bass clefs), and a bass clef staff labeled "Pedal". The music is marked *pp* (pianissimo). The first staff contains a melodic line with a slur over the first two measures and a fermata over the last two. The grand staff contains chords and single notes. The pedal staff contains a series of quarter notes. A circled letter "A" is at the end of the system.

Handwritten musical score for the second system. It features three staves: a treble clef staff with a key signature of one sharp (F#) and a common time signature (C), a grand staff (treble and bass clefs), and a bass clef staff labeled "Pedal". The music is marked *pp* (pianissimo). The first staff contains a melodic line with a slur over the first two measures and a fermata over the last two. The grand staff contains chords and single notes. The pedal staff contains a series of quarter notes. A circled letter "B" is at the end of the system.

Handwritten musical score for system C. It consists of three staves: Piano (P), Violin (V), and Cello (C). The piano part includes a Pedal (Ped.) line. The score is marked with various dynamics and articulations, including accents (^), slurs, and hairpins. The key signature has one flat (B-flat). The system is labeled with a circled 'C' at the top right.

Handwritten musical score for system D. It consists of three staves: Piano (P), Violin (V), and Cello (C). The piano part includes a Pedal (Ped.) line. The score is marked with various dynamics and articulations, including accents (^), slurs, and hairpins. The key signature has one flat (B-flat). The system is labeled with a circled 'D' at the top right.

Handwritten musical score for system E. It consists of three staves: Piano (P), Violin (V), and Cello (C). The piano part includes a Pedal (Ped.) line. The score is marked with various dynamics and articulations, including accents (^), slurs, and hairpins. The key signature has one flat (B-flat). The system is labeled with a circled 'E' at the top right. At the bottom right, there is a circled 'P' with a hairpin.



Handwritten musical score for guitar and piano, first system. The guitar part features a melodic line with a circled '9' and a circled '14'. The piano part has a circled '14' and some rhythmic markings.

Handwritten musical score for guitar and piano, second system. The guitar part has a circled '14' and a circled '14'. The piano part has a circled '14' and a circled '14'. There are some rhythmic markings and a circled '8' at the end.

Handwritten musical score for guitar and piano, third system. The guitar part has a circled '14' and a circled '14'. The piano part has a circled '14' and a circled '14'. There are some rhythmic markings and a circled '8' at the end. The score ends with the signature 'Stille' and '1968'.