

L.v. BEETHOVEN



W.A. MOZART



# NOTENHEFT

F. SCHUBERT



J. HAYDN



J. STRAUSS



PIRELLA

Sonate für Jazz - Piano  
und Schlagzeug

(2 Sätze) (ad. lib.) (Bass dazu)

1968

Hedolf Scherbaum

1

Langsam

PIANO

Handwritten musical notation for the first system. It consists of two staves: a treble clef staff and a bass clef staff. The time signature is 6/4. The treble staff begins with a whole note chord, followed by a series of notes with accents (^) and slurs. The bass staff contains a whole note chord, a dotted half note, and a whole note chord. A circled 'p' is written below the first measure of the bass staff.

Handwritten musical notation for the second system. It consists of two staves. The treble staff continues with notes and slurs, including some notes with flats (b) and accents (^). The bass staff contains several chords and rests, with some notes marked with slurs and accents.

Handwritten musical notation for the third system. It consists of two staves. The treble staff features notes with accents (^) and slurs, ending with a fermata. The bass staff contains chords and rests, with some notes marked with slurs and accents.

Handwritten musical notation for the first system. The treble clef staff contains a melody with several notes marked with accents (^). A dynamic marking of *ff* is present. The bass clef staff shows a triplet of eighth notes.

Handwritten musical notation for the second system. The treble clef staff continues the melodic line with accents (^). The bass clef staff features a triplet of eighth notes and other rhythmic markings.

Handwritten musical notation for the third system. The treble clef staff ends with a circled letter **B**. The bass clef staff has a dynamic marking of *ff*.

letzta \* mit...

etwas härter)

Handwritten musical notation for the first system. It consists of two staves: a treble staff and a bass staff. The treble staff begins with a treble clef and a key signature of one sharp (F#). The first measure contains a quarter note F#4, followed by a half note G#4, and a quarter note A4. The second measure contains a quarter note B4, followed by a half note C5, and a quarter note D5. The third measure contains a quarter note E5, followed by a half note F#5, and a quarter note G#5. The fourth measure contains a quarter note A5, followed by a half note B5, and a quarter note C6. The bass staff begins with a bass clef and a key signature of one sharp (F#). The first measure contains a quarter note F#2, followed by a half note G#2, and a quarter note A2. The second measure contains a quarter note B2, followed by a half note C3, and a quarter note D3. The third measure contains a quarter note E3, followed by a half note F#3, and a quarter note G#3. The fourth measure contains a quarter note A3, followed by a half note B3, and a quarter note C4. There are various dynamic markings and accents throughout the system.

Handwritten musical notation for the second system. It consists of two staves: a treble staff and a bass staff. The treble staff begins with a treble clef and a key signature of one flat (Bb). The first measure contains a quarter note Bb4, followed by a half note C5, and a quarter note D5. The second measure contains a quarter note E5, followed by a half note F#5, and a quarter note G#5. The third measure contains a quarter note A5, followed by a half note B5, and a quarter note C6. The fourth measure contains a quarter note D6, followed by a half note E6, and a quarter note F#6. The fifth measure contains a quarter note G#6, followed by a half note A6, and a quarter note B6. The sixth measure contains a quarter note C7, followed by a half note D7, and a quarter note E7. The seventh measure contains a quarter note F#7, followed by a half note G#7, and a quarter note A7. The eighth measure contains a quarter note B7, followed by a half note C8, and a quarter note D8. The bass staff begins with a bass clef and a key signature of one flat (Bb). The first measure contains a quarter note Bb2, followed by a half note C3, and a quarter note D3. The second measure contains a quarter note E3, followed by a half note F#3, and a quarter note G#3. The third measure contains a quarter note A3, followed by a half note B3, and a quarter note C4. The fourth measure contains a quarter note D4, followed by a half note E4, and a quarter note F#4. The fifth measure contains a quarter note G#4, followed by a half note A4, and a quarter note B4. The sixth measure contains a quarter note C5, followed by a half note D5, and a quarter note E5. The seventh measure contains a quarter note F#5, followed by a half note G#5, and a quarter note A5. The eighth measure contains a quarter note B5, followed by a half note C6, and a quarter note D6. There are various dynamic markings and accents throughout the system.

Handwritten musical notation for the third system. It consists of two staves: a treble staff and a bass staff. The treble staff begins with a treble clef and a key signature of one sharp (F#). The first measure contains a quarter note F#4, followed by a half note G#4, and a quarter note A4. The second measure contains a quarter note B4, followed by a half note C5, and a quarter note D5. The third measure contains a quarter note E5, followed by a half note F#5, and a quarter note G#5. The fourth measure contains a quarter note A5, followed by a half note B5, and a quarter note C6. The fifth measure contains a quarter note D6, followed by a half note E6, and a quarter note F#6. The sixth measure contains a quarter note G#6, followed by a half note A6, and a quarter note B6. The seventh measure contains a quarter note C7, followed by a half note D7, and a quarter note E7. The eighth measure contains a quarter note F#7, followed by a half note G#7, and a quarter note A7. The bass staff begins with a bass clef and a key signature of one sharp (F#). The first measure contains a quarter note F#2, followed by a half note G#2, and a quarter note A2. The second measure contains a quarter note B2, followed by a half note C3, and a quarter note D3. The third measure contains a quarter note E3, followed by a half note F#3, and a quarter note G#3. The fourth measure contains a quarter note A3, followed by a half note B3, and a quarter note C4. The fifth measure contains a quarter note D4, followed by a half note E4, and a quarter note F#4. The sixth measure contains a quarter note G#4, followed by a half note A4, and a quarter note B4. The seventh measure contains a quarter note C5, followed by a half note D5, and a quarter note E5. The eighth measure contains a quarter note F#5, followed by a half note G#5, and a quarter note A5. There are various dynamic markings and accents throughout the system.

Handwritten musical notation for the first system. The treble clef staff contains a melodic line with several chords and intervals, some with slurs and accents. The bass clef staff shows a simple bass line with a few notes.

Handwritten musical notation for the second system. The treble clef staff contains a melodic line with several chords and intervals, some with slurs and accents. The bass clef staff shows a simple bass line with a few notes.

Handwritten musical notation for the third system. The treble clef staff contains a melodic line with several chords and intervals, some with slurs and accents. The bass clef staff shows a simple bass line with a few notes.

Handwritten musical notation for the first system. The treble clef staff contains three groups of chords, each with a bracket and a '3' above it, indicating triplets. The first group has a flat sign above the first chord. The bass clef staff contains a single chord with a flat sign, followed by two single notes, and then a triplet of three notes with a flat sign above the first note.

Handwritten musical notation for the second system. The treble clef staff starts with a triplet of three chords, followed by a single chord with an accent (^) above it, and then another triplet of three chords. The bass clef staff starts with a chord with a flat sign, followed by a single chord with an accent (^) above it, and then a triplet of three notes with a flat sign above the first note.

Handwritten musical notation for the third system. The treble clef staff contains a triplet of three chords with a flat sign above the first chord, followed by a single chord with an accent (^) above it, and then a triplet of three chords with a flat sign above the first chord. The bass clef staff contains a triplet of three chords with a flat sign above the first chord, followed by a single chord with an accent (^) above it, and then a triplet of three chords with a flat sign above the first chord.

1.

2.

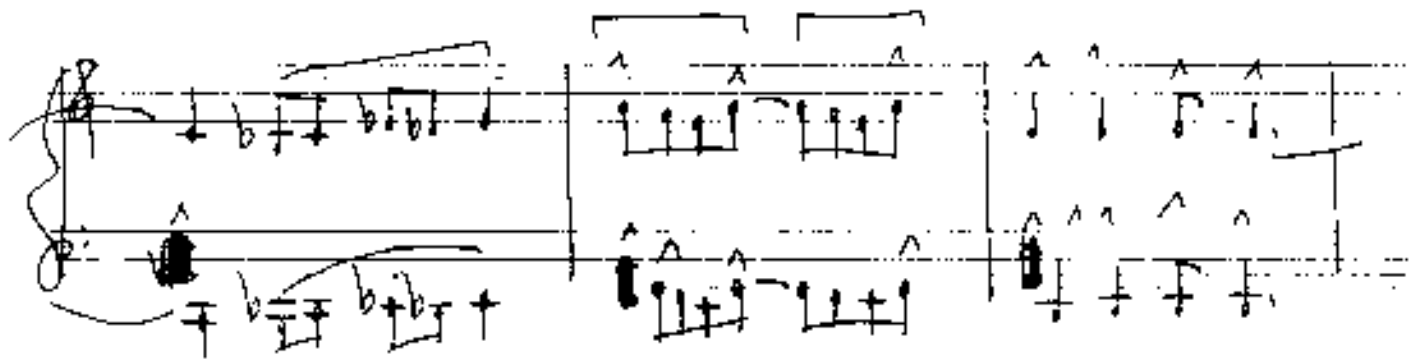
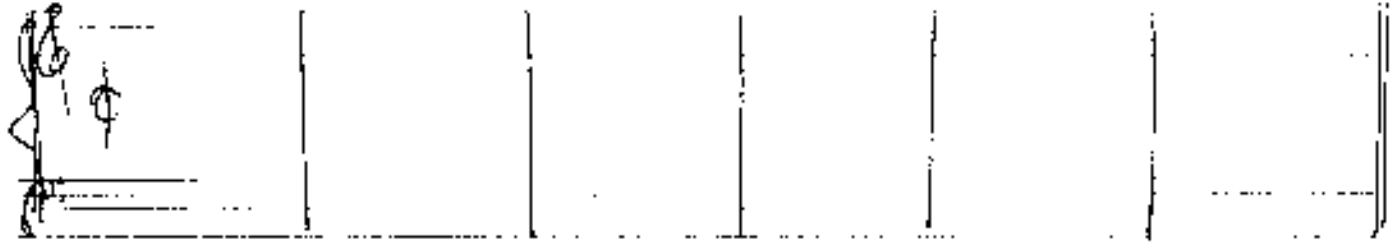
3.

sempre diu + gut

4.



2



Handwritten musical notation for the first system. The top staff is in treble clef and the bottom staff is in bass clef. The music consists of several measures with notes, rests, and dynamic markings such as  $pp$ . There are also some handwritten annotations above the notes.

Handwritten musical notation for the second system. The top staff is in treble clef and the bottom staff is in bass clef. The music consists of several measures with notes, rests, and dynamic markings such as  $pp$ . There are also some handwritten annotations above the notes.

Handwritten musical notation for the third system. The top staff is in treble clef and the bottom staff is in bass clef. The music consists of several measures with notes, rests, and dynamic markings such as  $pp$ . There are also some handwritten annotations above the notes.

Handwritten musical notation for the fourth system. The top staff is in treble clef and the bottom staff is in bass clef. The music consists of several measures with notes, rests, and dynamic markings such as  $pp$ . There are also some handwritten annotations above the notes.

Handwritten musical notation for a treble clef staff. It features a key signature of one sharp (F#) and a common time signature (C). The notation includes a series of notes with stems, some marked with accents (^) and slurs. There are also some vertical lines and brackets indicating phrasing or structure.

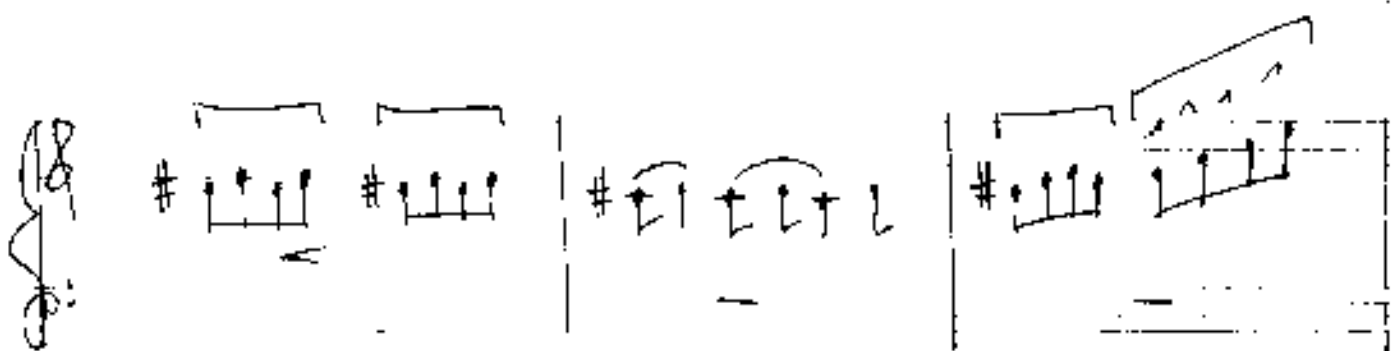
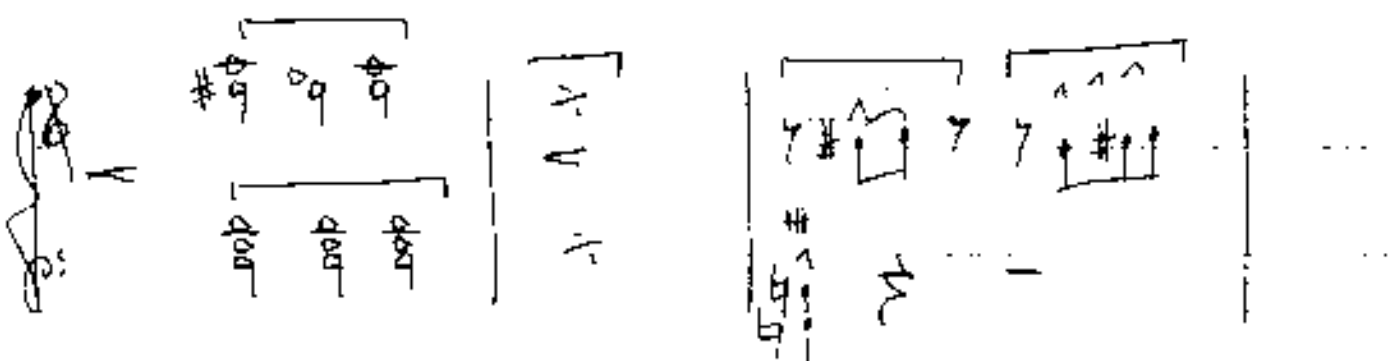
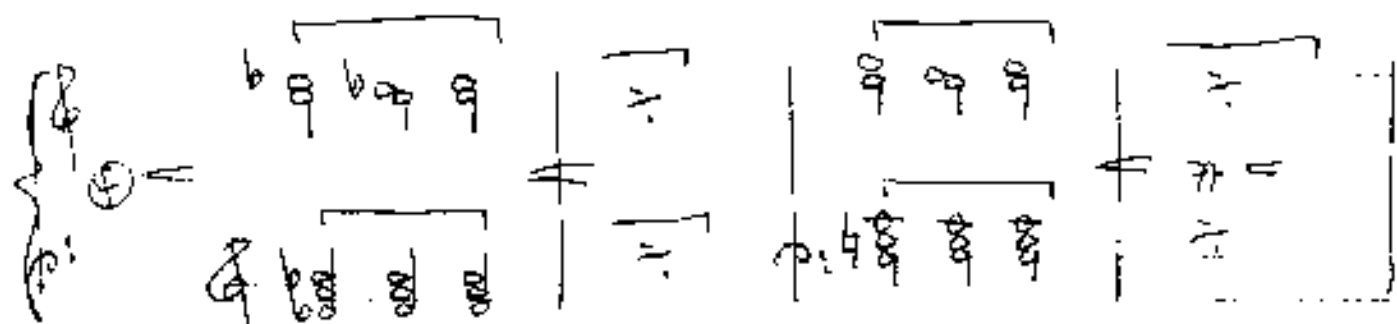
Handwritten musical notation for a treble clef staff. It features a key signature of one sharp (F#) and a common time signature (C). The notation includes a series of notes with stems, some marked with accents (^) and slurs. There are also some vertical lines and brackets indicating phrasing or structure.

Handwritten musical notation for a treble clef staff. It features a key signature of one sharp (F#) and a common time signature (C). The notation includes a series of notes with stems, some marked with accents (^) and slurs. There are also some vertical lines and brackets indicating phrasing or structure.

Handwritten musical notation for the first system. It consists of two staves. The upper staff has a treble clef and contains several measures of music with notes and accidentals (flats and sharps). The lower staff has a bass clef and contains corresponding notes. There are dynamic markings such as  $\hat{}$  and  $\text{cresc.}$  throughout the system.

Handwritten musical notation for the second system. It features two staves. The upper staff begins with a circled  $p$  (piano) dynamic marking. The notation includes notes, accidentals, and a  $\text{cresc.}$  (crescendo) marking. The lower staff contains notes and rests.

Handwritten musical notation for the third system. It consists of two staves with complex rhythmic patterns and numerous accidentals (flats and sharps). The notation is dense and includes various note values and rests.



Handwritten musical notation for the first system, featuring two staves with notes and chords. The notation includes various symbols like 'p', 'f', and 'ff'.

Handwritten musical notation for the second system, showing a sequence of notes and chords across two staves.

Handwritten musical notation for the third system, including a 'CODA' symbol and the text "letzten 3 Takte modals".

Handwritten musical notation for the fourth system, consisting of two empty staves with the word "dim" written in the first measure.

2.

Handwritten musical notation in treble clef with a key signature of one sharp (F#). The notation includes a treble clef, a key signature signature (F#), and a series of vertical lines representing a scale or exercise. The word "dün" is written below the first few notes.

Handwritten musical notation in treble clef with a key signature of one sharp (F#). It features a treble clef, a key signature signature (F#), and a series of notes with stems and beams. A circled number "2" is written above the first measure. The word "dün" is written below the first few notes.

Handwritten musical notation in treble clef with a key signature of one sharp (F#). It features a treble clef, a key signature signature (F#), and a series of notes with stems and beams. The word "dün" is written below the first few notes.

Handwritten musical notation in treble clef with a key signature of one sharp (F#). It features a treble clef, a key signature signature (F#), and a series of notes with stems and beams. The word "dün" is written below the first few notes.

Handwritten musical notation for the first system. The treble clef part contains notes with accents (^) and slurs. The bass clef part contains notes with slurs and a '6' below it, possibly indicating a fret or a specific technique.

Handwritten musical notation for the second system. It consists of two staves with notes, slurs, and dynamic markings such as 'p' (piano) and 'f' (forte).

Handwritten musical notation for the third system. It features a treble clef and a bass clef with notes, slurs, and dynamic markings.

Handwritten musical notation for the fourth system. It shows two staves with notes, slurs, and dynamic markings.



1.

2.

MOD