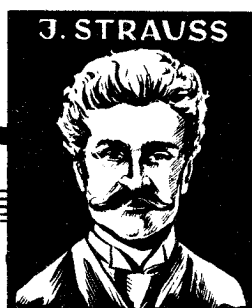
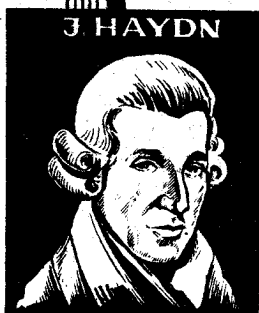
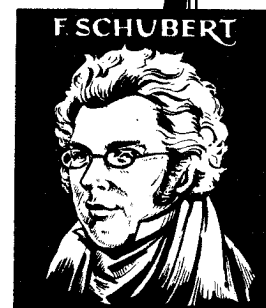


NOTENHEFT



12 Teile

für Orgel

1968

Adolf Scherbaum

①

leuto

2

breit (p)

Handwritten musical notation for the first system. It consists of two staves: a treble staff and a bass staff. The treble staff begins with a treble clef and a 4/8 time signature. The first measure contains a quarter note G4 with a sharp sign (#) above it. The second measure contains a quarter note A4 with a sharp sign (#) above it. The third measure contains a quarter note B4 with a sharp sign (#) above it. The fourth measure contains a quarter note C5 with a sharp sign (#) above it. The bass staff begins with a bass clef and a 4/8 time signature. The first measure contains a quarter note G3 with a flat sign (b) below it. The second measure contains a quarter note F3 with a flat sign (b) below it. The third measure contains a quarter note E3 with a flat sign (b) below it. The fourth measure contains a quarter note D3 with a flat sign (b) below it. There are also some handwritten annotations like '77' and '9' near the notes.

Handwritten musical notation for the second system. It consists of two staves: a treble staff and a bass staff. The treble staff begins with a treble clef and a 4/8 time signature. The first measure contains a quarter note G4 with a sharp sign (#) above it. The second measure contains a quarter note A4 with a sharp sign (#) above it. The third measure contains a quarter note B4 with a sharp sign (#) above it. The fourth measure contains a quarter note C5 with a sharp sign (#) above it. The bass staff begins with a bass clef and a 4/8 time signature. The first measure contains a quarter note G3 with a flat sign (b) below it. The second measure contains a quarter note F3 with a flat sign (b) below it. The third measure contains a quarter note E3 with a flat sign (b) below it. The fourth measure contains a quarter note D3 with a flat sign (b) below it. There are also some handwritten annotations like '59' and '44' near the notes.

accel.

Handwritten musical notation for the third system. It consists of two staves: a treble staff and a bass staff. The treble staff begins with a treble clef and a 4/8 time signature. The first measure contains a quarter note G4 with a sharp sign (#) above it. The second measure contains a quarter note A4 with a sharp sign (#) above it. The third measure contains a quarter note B4 with a sharp sign (#) above it. The fourth measure contains a quarter note C5 with a sharp sign (#) above it. The bass staff begins with a bass clef and a 4/8 time signature. The first measure contains a quarter note G3 with a flat sign (b) below it. The second measure contains a quarter note F3 with a flat sign (b) below it. The third measure contains a quarter note E3 with a flat sign (b) below it. The fourth measure contains a quarter note D3 with a flat sign (b) below it. There are also some handwritten annotations like '59', '44', and '59' near the notes. The system ends with a double bar line and the word 'Fine' written above it.

(letztes) gr. gut

marcato (♩)

subito

breit (♩)

(2 + gut + p.c. al Fine)

3

Presto (4+) (auf 2. Schläge)

6

Handwritten musical notation for the first system, featuring a treble clef and a key signature of one sharp (F#). The notation includes a melodic line with a slur and a bass line with a series of notes and accidentals.

Handwritten musical notation for the second system, continuing the piece with similar notation to the first system.

meno

Handwritten musical notation for the third system, marked "meno". It features a treble clef and a key signature of one sharp. The notation includes a melodic line with a slur and a bass line with notes and accidentals.

lunga

Handwritten musical notation for the fourth system, marked "lunga". It features a treble clef and a key signature of one sharp. The notation includes a melodic line with a slur and a bass line with notes and accidentals. A box containing a sharp symbol is visible.

4

Adagio (♩)

Handwritten musical score for Adagio (♩). The score is written on three systems of staves. The first system shows a treble clef, a 4/4 time signature, and a circled 'p' for piano. The melody in the treble clef features a series of quarter notes with a slur and a bracket labeled '4' above it. The bass clef accompaniment consists of chords. The second system continues the melody and accompaniment. The third system shows more complex accompaniment with sixteenth notes in the bass clef. The score is written in a clear, legible hand.

8

Handwritten musical notation on a grand staff. The right-hand part features a melodic line with a slur over the first two measures and a fermata over the third. The left-hand part consists of chords. Above the staff, the handwritten text "(letzte + ev. mit)" is written with an arrow pointing to the third measure. The word "Fine" is written at the end of the system.

Handwritten musical notation on a grand staff. The right-hand part has a slur over a group of notes in the first measure, with a '4' written above it. The left-hand part has a key signature change to one sharp (F#) in the first measure.

Handwritten musical notation on a grand staff. The right-hand part has a slur over a group of notes in the first measure. The left-hand part has a key signature change to one flat (Bb) in the first measure. Above the staff, the handwritten text "poco rit" is written. At the end of the system, the text "D.C. al Fine" is written.

⑤ (alles sehr frei!)

frei (rubato)

Handwritten musical notation for the first system. It features a treble clef and a circled key signature of one sharp (F#). The notation includes a long melodic line with various accidentals (sharps, flats, naturals) and slurs, indicating a free and rubato performance style.

Handwritten musical notation for the second system. It features a treble clef and a key signature of one flat (Bb). The notation includes a melodic line with slurs and accidentals, continuing the free and rubato style.

Handwritten musical notation for the third system. It includes triplets in the treble clef and a circled key signature of one sharp (F#). Performance markings include 'rasch' (fast), 'breit' (wide), and 'mit' (with). The notation features various accidentals and slurs, ending with a circled double bar line.

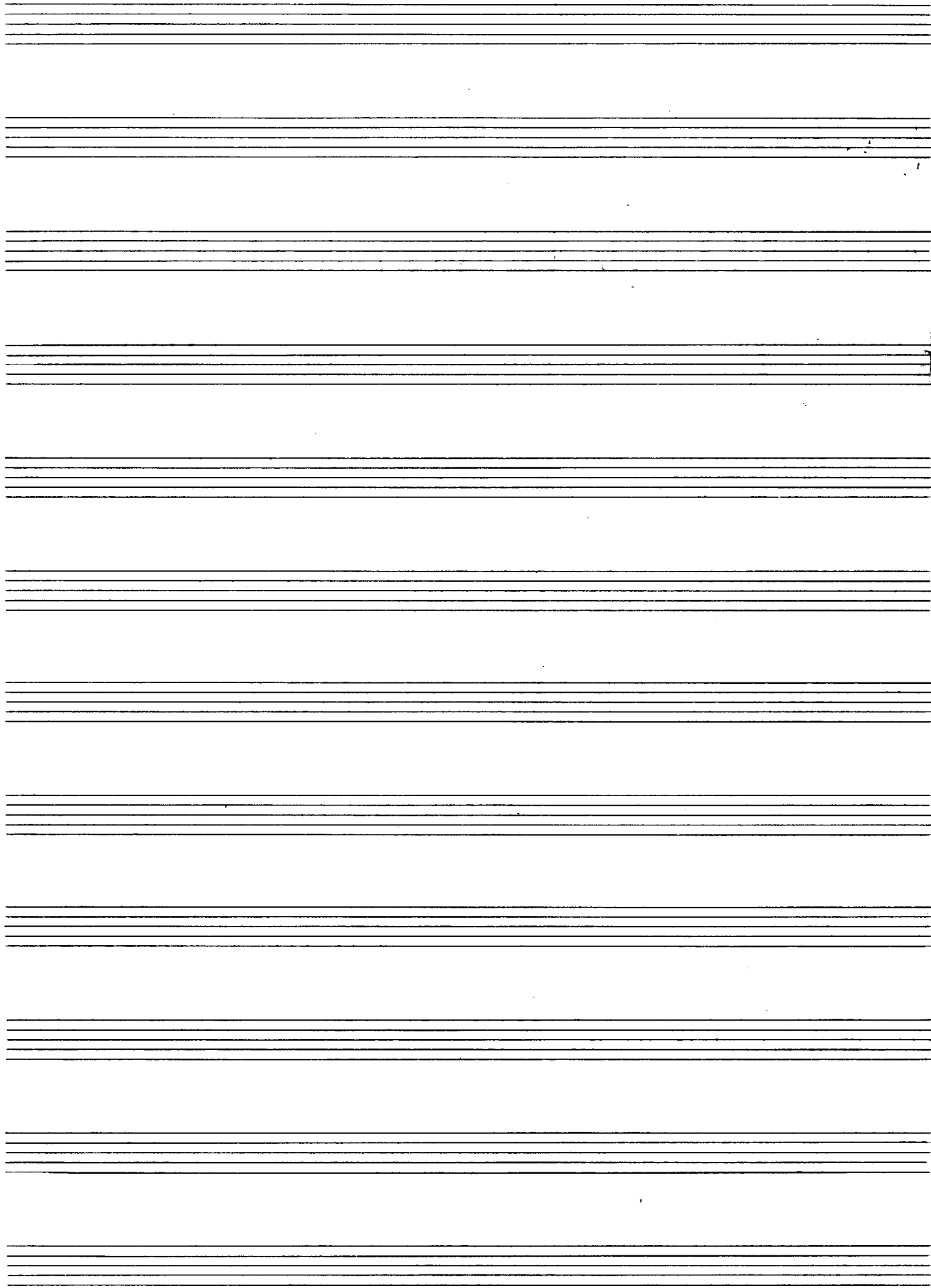
Prezets

Handwritten musical score for the first system. The treble clef part contains three measures, each with a triplet of notes (G, A, B) marked with a '3' and a bracket. The bass clef part contains three measures of quarter notes, with a circled sharp sign (#) in the first measure.

Handwritten musical score for the second system. The treble clef part contains four measures with triplets of notes (G, A, B) and a circled sharp sign (#). The bass clef part contains four measures of quarter notes.

Handwritten musical score for the third system. The treble clef part contains four measures with triplets of notes and a circled sharp sign (#). The bass clef part contains four measures of quarter notes, with the word "auer." written in the first measure. A circled sharp sign (#) is also present in the first measure of the bass clef part.

Handwritten musical notation on a five-line staff. It includes a treble clef, a key signature of two sharps (F# and C#), and a common time signature (C). The notation consists of several notes and rests, with some notes beamed together. A large, stylized flourish or signature is written across the middle of the staff.



6

Lento (mysterioso)

Handwritten musical notation for the first system, measures 1-3. The notation is on a grand staff with treble and bass clefs. Measure 1: Treble clef has a whole note chord with a sharp sign above it; bass clef has a whole note chord with a sharp sign below it. Measure 2: Treble clef has a half note chord with a sharp sign above it; bass clef has a half note chord with a sharp sign below it. Measure 3: Treble clef has a whole note chord with a flat sign above it; bass clef has a whole note chord with a flat sign below it. The first two measures contain vertical lines representing notes, while the third measure contains a melodic line in the bass clef.

Handwritten musical notation for the second system, measures 4-6. The notation is on a grand staff with treble and bass clefs. Measure 4: Treble clef has a whole note chord with a flat sign above it; bass clef has a whole note chord with a flat sign below it. Measure 5: Treble clef has a half note chord; bass clef has a half note chord. Measure 6: Treble clef has a whole note chord with a flat sign above it; bass clef has a whole note chord with a flat sign below it. The first two measures contain vertical lines representing notes, while the third measure contains a melodic line in the bass clef.

Handwritten musical notation for the third system, measures 7-10. The notation is on a grand staff with treble and bass clefs. Measure 7: Treble clef has a whole note chord with a flat sign above it; bass clef has a whole note chord with a flat sign below it. Measure 8: Treble clef has a half note chord; bass clef has a half note chord. Measure 9: Treble clef has a whole note chord; bass clef has a whole note chord. Measure 10: Treble clef has a whole note chord; bass clef has a whole note chord. The first two measures contain vertical lines representing notes, while the third and fourth measures contain melodic lines in both clefs.

Handwritten musical notation for the first system. The treble staff contains a large slur over a sequence of notes, with a repeat sign at the end. The bass staff contains a few notes. The key signature is one sharp (F#).

Handwritten musical notation for the second system. The treble staff contains several measures of music with various symbols, including a fermata. The bass staff contains a few notes. The key signature is one sharp (F#).

Handwritten musical notation for the third system. The treble staff contains several measures of music with various symbols, including a tempo marking "(2+ poco rit)". The bass staff contains a few notes. The key signature is one sharp (F#).

Handwritten musical notation for the fourth system. The treble staff contains a large slur over a sequence of notes, with a fermata at the end. The bass staff contains a few notes. The key signature is one sharp (F#).

7

ruhig schreiben

Handwritten musical notation for the first system, featuring a treble clef, a 3/4 time signature, and a circled 'p' dynamic marking. The notation includes a melodic line with accidentals and a bass line with chords. A large slur covers the first two measures of the upper staff.

Handwritten musical notation for the second system, featuring a treble clef and a bass clef. The notation includes a melodic line with accidentals and a bass line with chords. A large slur covers the first two measures of the upper staff.

Handwritten musical notation for the third system, featuring a treble clef and a bass clef. The notation includes a melodic line with accidentals and a bass line with chords. A large slur covers the first two measures of the upper staff.

gr. rit

8

rubato (alles sehr frei)

Handwritten musical score for the first system. It consists of two staves: a treble clef staff and a bass clef staff. The treble staff contains several measures of music with notes and chords, some marked with a sharp sign (#). A large bracket spans across the first two measures. The bass staff contains a few notes and rests. There are handwritten annotations: "breit" above the treble staff and "lunga" below the bass staff. A circled sharp sign (#) is present on both staves.

Handwritten musical score for the second system. It consists of two staves: a treble clef staff and a bass clef staff. The treble staff contains several measures of music with notes and chords, some marked with a sharp sign (#). A large bracket spans across the first two measures. The bass staff contains a few notes and rests. There are handwritten annotations: "breit" above the treble staff and "lunga" below the bass staff.

Presto

Handwritten musical score for the third system. It consists of two staves: a treble clef staff and a bass clef staff. The treble staff contains several measures of music with notes and chords, some marked with a sharp sign (#). A large bracket spans across the first two measures. The bass staff contains a few notes and rests. There are handwritten annotations: "Presto" at the beginning and "accel." above the treble staff. A circled sharp sign (#) is present on the treble staff.

breit (aber nicht schleppend) (allmähliche Steigerung in Tempo)

Handwritten musical notation for the first system, featuring a treble and bass staff with various notes, rests, and dynamic markings.

Handwritten musical notation for the second system, including a treble and bass staff with notes and rests, and a long arrow above the staff indicating a tempo change.

Handwritten musical notation for the third system, including a treble and bass staff with notes and rests, and a circled word 'git' above the staff.

Handwritten musical notation for the fourth system, including a treble and bass staff with notes and rests, and a large flourish at the end.

9

Leute (1) ruhig

Handwritten musical notation for the first system. It consists of two staves. The top staff is in treble clef with a 4/4 time signature. The bottom staff is in bass clef. The music begins with a key signature of one sharp (F#) and a common time signature (C). The melody in the treble clef starts with a quarter note F#, followed by quarter notes G, A, B, and C. The bass clef accompaniment starts with a half note chord of F# and C, followed by a half note chord of F# and C. The system concludes with a double bar line.

Handwritten musical notation for the second system. It consists of two staves. The top staff is in treble clef. The bottom staff is in bass clef. The melody in the treble clef continues with a quarter note B, followed by quarter notes A, G, and F. The bass clef accompaniment continues with a half note chord of F# and C, followed by a half note chord of F# and C. The system concludes with a double bar line.

Handwritten musical notation for the third system. It consists of two staves. The top staff is in treble clef. The bottom staff is in bass clef. The melody in the treble clef continues with a quarter note E, followed by quarter notes D, C, and B. The bass clef accompaniment continues with a half note chord of F# and C, followed by a half note chord of F# and C. The system concludes with a double bar line.

10

Presto (kann auch ganz frei gestaltet werden)
(in Tempo)

Handwritten musical notation for the first system. It consists of two staves. The upper staff is in treble clef and the lower in bass clef. The key signature has two sharps (F# and C#). The time signature is 3/4. The first measure has a circled 'f' (forte) dynamic. The second measure has a circled 'p' (piano) dynamic. There are various notes, rests, and slurs across the system.

Handwritten musical notation for the second system. It consists of two staves. The upper staff is in treble clef and the lower in bass clef. The key signature has two sharps. The time signature is 3/4. The notation includes various notes, rests, and slurs, with some notes marked with 'f' and 'p' dynamics.

Handwritten musical notation for the third system. It consists of two staves. The upper staff is in treble clef and the lower in bass clef. The key signature has two sharps. The time signature is 3/4. The notation includes various notes, rests, and slurs, with some notes marked with 'f' and 'p' dynamics.

Lento

11

Presto (rubato (brei))

(Prestissimo)

Handwritten musical notation for the first system. It features a treble clef and a circled sharp sign (#). The time signature is 2/4. The music consists of two measures. The first measure contains a half note with a sharp sign (#) and a quarter note with a flat sign (b). The second measure contains a quarter note with a flat sign (b) and a half note with a flat sign (b). The word "hant" is written below the first measure. Brackets above the notes indicate phrasing.

Handwritten musical notation for the second system. It features a treble clef and a circled sharp sign (#). The music consists of two measures. The first measure contains a half note with a sharp sign (#) and a quarter note with a sharp sign (#). The second measure contains a half note with a sharp sign (#) and a quarter note with a sharp sign (#). Brackets above the notes indicate phrasing.

Handwritten musical notation for the third system. It features a treble clef and a circled sharp sign (#). The music consists of two measures. The first measure contains a half note with a flat sign (b) and a quarter note with a sharp sign (#). The second measure contains a half note with a sharp sign (#) and a quarter note with a sharp sign (#). Brackets above the notes indicate phrasing.

Handwritten musical notation for the first system, featuring a treble and bass staff with various notes and accidentals.

Handwritten musical notation for the second system, including a circled note in the bass staff.

Handwritten musical notation for the third system, showing a sequence of notes in both staves.

Handwritten musical notation for the fourth system, ending with a double bar line and a flourish.

121

Adolf Scherbaum Adagio (mysterioso)

4/4 pp

Handwritten musical notation for the first system. The treble clef staff contains notes with accidentals (b, #) and a fermata. The bass clef staff contains notes with accidentals (b) and a fermata. The system is divided into two measures by a bar line.

Handwritten musical notation for the second system. The treble clef staff contains notes with accidentals (b) and a fermata. The bass clef staff contains notes with accidentals (b) and a fermata. The system is divided into two measures by a bar line.

Handwritten musical notation for the third system. The treble clef staff contains notes with accidentals (b) and a fermata. The bass clef staff contains notes with accidentals (b) and a fermata. The system is divided into two measures by a bar line.

su.rit.

ritacca

Handwritten musical notation for the fourth system. The treble clef staff contains notes with accidentals (b) and a fermata. The bass clef staff contains notes with accidentals (b) and a fermata. The system is divided into two measures by a bar line.

Zeit ausbreitend — (wie im Choral)

Handwritten musical score for the first system. It consists of three staves: a treble clef staff, a bass clef staff, and a grand staff (treble and bass clefs). The key signature has one sharp (F#). The treble staff contains a melodic line with notes G4, A4, B4, and C5, with some accidentals and slurs. The bass staff contains a bass line with notes G3, F#3, and E3. The grand staff contains a bass line with notes G2, F#2, and E2. The system is divided into four measures by vertical bar lines.

Handwritten musical score for the second system. It consists of three staves: a treble clef staff, a bass clef staff, and a grand staff (treble and bass clefs). The key signature has one flat (Bb). The treble staff contains a melodic line with notes Bb4, A4, G4, and F4, with some accidentals and slurs. The bass staff contains a bass line with notes Bb3, A3, G3, and F3. The grand staff contains a bass line with notes Bb2, A2, G2, and F2. The system is divided into four measures by vertical bar lines.

Handwritten musical score for the third system. It consists of three staves: a treble clef staff, a bass clef staff, and a grand staff (treble and bass clefs). The key signature has one flat (Bb). The treble staff contains a melodic line with notes Bb4, A4, G4, and F4, with some accidentals and slurs. The bass staff contains a bass line with notes Bb3, A3, G3, and F3. The grand staff contains a bass line with notes Bb2, A2, G2, and F2. The system is divided into four measures by vertical bar lines.

er(rit)

Handwritten musical score for the first system. It consists of three staves: treble, alto, and bass. The treble staff contains a melodic line with notes and rests, including a fermata. The alto and bass staves provide harmonic accompaniment with chords and single notes. The notation is in black ink on a white background.

Handwritten musical score for the second system. It features three staves. The first part of the system includes notes and rests in the treble and bass staves. A section is marked with the word "lunga" in a large, cursive script, which is followed by a large, dense scribble in the treble staff. The notation is in black ink on a white background.