

LESUS

Notenheft



4

5

Handwritten musical score for measures 8-11. Measure 8 features a circled **fp** dynamic marking. The notation includes various notes, rests, and slurs across four staves.

Handwritten musical score for measures 12-15. Measure 12 has a circled **9** marking. Measure 14 includes **arco** and **p73** markings. The notation includes various notes, rests, and slurs across four staves.

Handwritten musical score for measures 16-19. Measure 16 has a circled **10** marking. The notation includes various notes, rests, and slurs across four staves.

20

21

22

Solo

23

24

25

Handwritten musical score for measures 14-15. The system consists of four staves. The top staff has a treble clef and a key signature of one flat (B-flat). It features a melodic line with slurs and accents. The second staff has a treble clef and contains chords with slurs and accents. The third staff has a treble clef and contains chords with slurs and accents. The bottom staff has a bass clef and contains a rhythmic line with slurs and accents. A circled measure number '14' is at the top right.

Handwritten musical score for measures 15-16. The system consists of four staves. The top staff has a treble clef and a key signature of one flat (B-flat). It features a melodic line with slurs and accents. The second staff has a treble clef and contains chords with slurs and accents. The third staff has a treble clef and contains chords with slurs and accents. The bottom staff has a bass clef and contains a rhythmic line with slurs and accents. A circled measure number '15' is at the top right.

Handwritten musical score for measures 16-17. The system consists of four staves. The top staff has a treble clef and a key signature of one flat (B-flat). It features a melodic line with slurs and accents. The second staff has a treble clef and contains chords with slurs and accents. The third staff has a treble clef and contains chords with slurs and accents. The bottom staff has a bass clef and contains a rhythmic line with slurs and accents. A circled measure number '16' is at the top right.

16

17

1.

Solo

pp

f

CODA

Gitar + drum

18

2.

mf

f

pp

f

VCO

Lento Lento

19

Bass

Schlag

p

f

6

Bass Solo

20

21

Flöte (ruhig / frei) **ruhig (frei spielen!)**

22

23

Viol.
Bass
Schlagzeug

Bass Solo

Handwritten musical score for measures 27-28. The score is written for Flute (Fl.), Violin (Viol.), Bass, and Schlagzeug (Drums). The key signature is one sharp (F#) and the time signature is 4/4. Measure 28 is circled with the number 28. Dynamics include *pp* and *pp*. The Flute and Violin parts have notes with accents (^) and slurs. The Bass part has a circled *Solo* and a circled *p*. The Schlagzeug part has a circled *pp*.

Handwritten musical score for measures 29-30. Measure 29 is circled with the number 29. The score includes a circled *Schlagz. Solo* and a circled *p*. A circled annotation reads "güt + dir". The score is written for Bass and Schlagzeug. Dynamics include *pp=p* and *p*.

Handwritten musical score for measure 30. The score is written for Flute (Fl.) and Schlagzeug (Drums). The key signature is one sharp (F#) and the time signature is 4/4. The Flute part has a circled *(frei) Flöte Solo! frei*. Dynamics include *pp* and *ff*.

Handwritten musical score for measure 30. The score is written for Bass and Schlagzeug. The key signature is one sharp (F#) and the time signature is 4/4. The Bass part has notes with accents (^) and slurs. The Schlagzeug part has a circled *pp*. A circled annotation reads "D.G.". The score ends with a circled *Satz 1* and a circled *al p* and *COPPA*.

CODA (Part 1)

Handwritten musical score for the first CODA section. It consists of five staves. The top staff is a treble clef with notes and accidentals, including a circled 'ff' and a circled 'f'. The second staff is a treble clef with notes and accidentals, including a circled 'ff'. The third staff is a treble clef with notes and accidentals, including a circled 'ff'. The fourth staff is a bass clef with notes and accidentals, including a circled 'ff'. The fifth staff is a bass clef with notes and accidentals, including a circled 'ff'. The section ends with a double bar line and the instruction '4-6 x ||: (string.)' written below the staves.

string. →

Handwritten musical score for the second CODA section. It consists of five staves. The top staff is a treble clef with notes and accidentals, including a circled 'FIN'. The second staff is a treble clef with notes and accidentals. The third staff is a treble clef with notes and accidentals. The fourth staff is a bass clef with notes and accidentals. The fifth staff is a bass clef with notes and accidentals, including a circled 'ff'. The section ends with a double bar line and the instruction 'f = ff' written below the staves.

Flöte

Satz ②

Flöte!

①

Handwritten musical score for the first system. It features a treble clef with a key signature of one flat and a 3/4 time signature. The music is written for flute and piano. The flute part begins with a circled 'p' dynamic marking. The piano accompaniment includes a circled 'p' and a circled '137'. A handwritten note reads 'ruhig - aber nicht ophlegend!'. The system concludes with a circled '1' in the top right corner.

Handwritten musical score for the second system. It continues the piece with a treble clef and a key signature of one flat. The flute part starts with a circled '2' and a circled '2' in the top right corner. The piano accompaniment includes a circled 'Solo (Part. 1.)' marking. The system concludes with a circled '2' in the top right corner.

Handwritten musical score for the third system. It continues the piece with a treble clef and a key signature of one flat. The flute part starts with a circled '3' and a circled '3' in the top right corner. The piano accompaniment includes a circled '3' in the top right corner. The system concludes with a circled '3' in the top right corner.

3

weiter

9

Handwritten musical score for measures 3-9. The score is written on a grand staff with treble, alto, and bass clefs. It includes various notes, rests, and dynamic markings like 'p' and 'f'. There are also some handwritten annotations and a circled '3' in the bass clef staff.

5

6

Handwritten musical score for measures 5-6. The word "appassionato" is written in the treble clef staff. The music consists of several measures with notes and rests. A circled "5" is above the first measure and a circled "6" is above the last measure.

7

Handwritten musical score for measure 7. The word "(letztes ruh...)" is written in the treble clef staff. The music includes notes, rests, and dynamic markings like "p". A circled "7" is above the first measure, and a circled "COPM" is at the end of the staff.

(letztes ruh...)

(Normalflöte) etwas bewegen

→ (acc.)

8

Handwritten musical score for measures 8-9. The score consists of four staves. The first staff has a treble clef and a key signature of one sharp (F#). It contains notes with an accent (^) and dynamic marking 'ff'. The second staff has a treble clef and a key signature of one sharp, with notes and dynamic marking 'ff'. The third staff has a bass clef and a key signature of one sharp, with notes and dynamic marking 'ff'. The fourth staff has a bass clef and a key signature of one sharp, with notes and dynamic marking 'ff'. A handwritten note 'steigern Tempo →' is written across the second and third staves. The measure number '8' is circled at the end of the system.

Handwritten musical score for measures 9-10. The score consists of four staves. The first staff has a treble clef and a key signature of one sharp, with notes and dynamic marking 'ff'. The second staff has a treble clef and a key signature of one sharp, with notes and dynamic marking 'ff'. The third staff has a bass clef and a key signature of one sharp, with notes and dynamic marking 'ff'. The fourth staff has a bass clef and a key signature of one sharp, with notes and dynamic marking 'ff'. A circled annotation '(poco rit)' is present in the second staff. The measure number '9' is circled at the end of the system.

Handwritten musical score for measures 10-11. The score consists of four staves. The first staff has a treble clef and a key signature of one sharp, with notes and dynamic marking 'ff'. A circled annotation 'breit' is present in the first staff. The second staff has a treble clef and a key signature of one sharp, with notes and dynamic marking 'ff'. The third staff has a bass clef and a key signature of one sharp, with notes and dynamic marking 'ff'. The fourth staff has a bass clef and a key signature of one sharp, with notes and dynamic marking 'ff'. The measure number '10' is circled at the end of the system.

(bei - zwing) !

11

Handwritten musical score for measures 11-12. The piano part includes a circled "Solo" and a circled "p". The guitar part has a circled "11" at the end. There are various musical notations including notes, rests, and dynamic markings.

Handwritten musical score for measures 12-13. The piano part includes a circled "12" at the end. The guitar part has a circled "13" and "14" at the end. There are various musical notations including notes, rests, and dynamic markings.

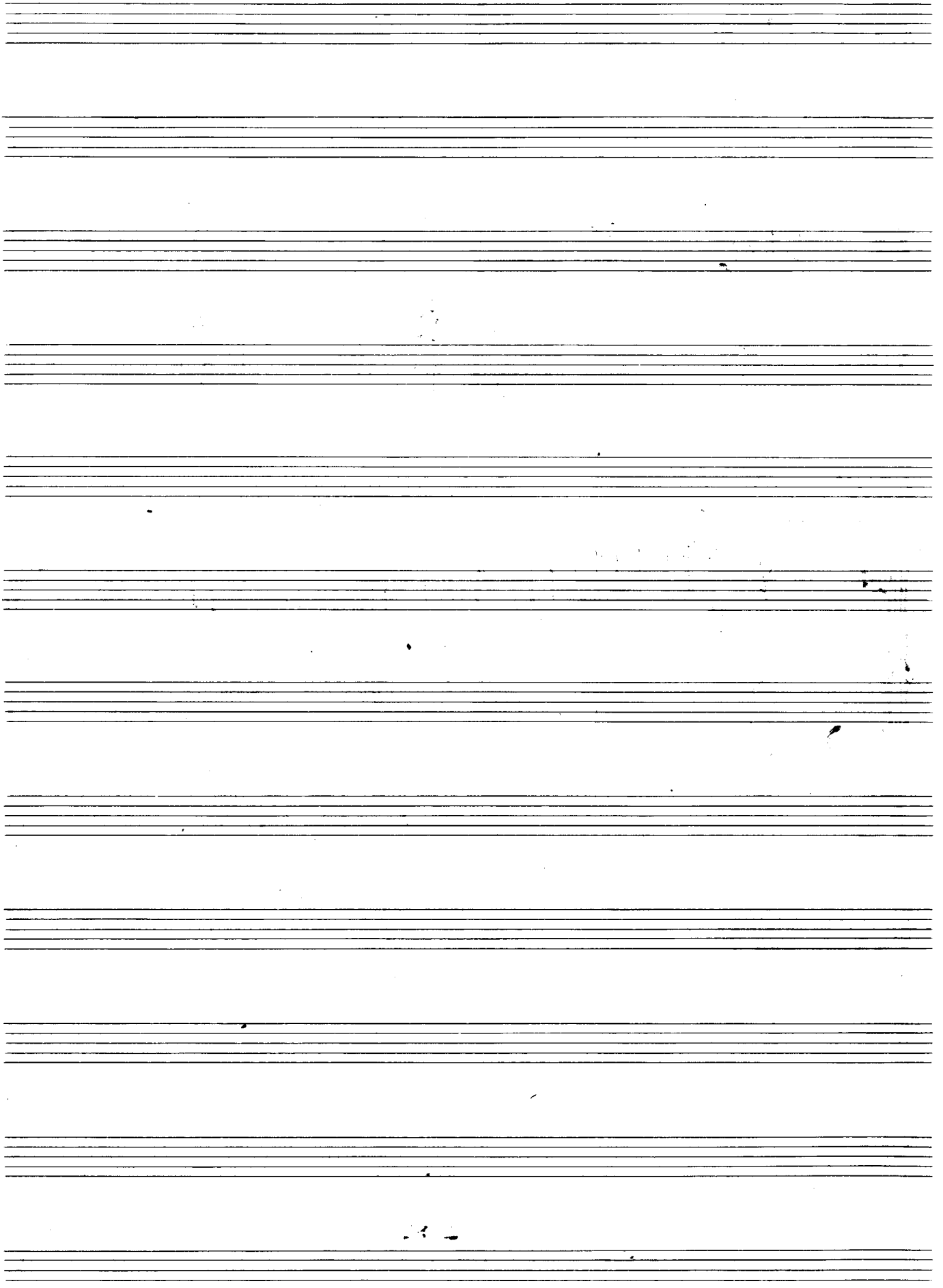
Handwritten musical score for measures 13-14. The piano part includes a circled "Solo" and a circled "p". The guitar part has a circled "13" and "14" at the end. There are various musical notations including notes, rests, and dynamic markings.

CODA

(rit)!

Handwritten musical score for strings and woodwinds. It consists of four staves. The first three staves are for strings (Violin I, Violin II, and Viola), and the fourth is for woodwinds (Flute). The score is marked with dynamics such as *pp* and *mp*, and includes various musical notations like slurs, accents, and articulation marks. The tempo marking (rit) is present at the top right.

Handwritten musical score for Bass (Baß) and Snare Drum (Schlagzeug). The Bass part is on the top staff, starting with a circled frei marking and ending with a circled Fine marking. The Snare Drum part is on the bottom staff, marked with *pp* and *ppp*. The tempo marking (rit + obi) is written above the Bass staff. The score includes various rhythmic notations and dynamic markings.



Presto (Prestissimo)

Satz 3

①

Solo!

pp

②

p

③

f

Handwritten musical score for the first system, measures 4-7. The system includes staves for Flute, Violin, Bass, and Drums. Measure 4 contains a rest for the Flute and a dynamic marking of *ff*. Measure 5 features a melodic line in the Flute with accents and a dynamic marking of *ff*. Measure 6 continues the melodic line with a dynamic marking of *ff*. Measure 7 concludes the system with a dynamic marking of *ff*. A circled number 4 is located in the top right corner of the system.

Handwritten musical score for the second system, measures 8-11. Measure 8 starts with a dynamic marking of *ff* and a circled number 5 in the top right. Measure 9 features a melodic line in the Flute with accents and a dynamic marking of *ff*. Measure 10 continues the melodic line with a dynamic marking of *ff*. Measure 11 concludes the system with a dynamic marking of *ff*.

Handwritten musical score for the third system, measures 12-15. Measure 12 starts with a dynamic marking of *ff* and a circled number 6 in the top right. Measure 13 features a melodic line in the Flute with accents and a dynamic marking of *ff*. Measure 14 continues the melodic line with a dynamic marking of *ff*. Measure 15 concludes the system with a dynamic marking of *ff*. A circled number 7 is located in the bottom left corner of the system.

Handwritten musical score for measures 7 and 8. The system includes a treble clef staff with a key signature of one flat (B-flat) and a common time signature. The bass clef staff contains a piano (p) dynamic marking and a circled 'arco' instruction. The notation features complex rhythmic patterns with many beamed notes and accents.

Handwritten musical score for measures 9 and 10. The system includes a treble clef staff with a key signature of one sharp (F#) and a common time signature. The bass clef staff contains a piano (p) dynamic marking. The notation includes a 'trio' marking in a circle and various rhythmic figures with accents and slurs.

Handwritten musical score for measures 11 and 12. The system includes a treble clef staff with a key signature of one sharp (F#) and a common time signature. The bass clef staff contains a piano (p) dynamic marking. The notation features complex rhythmic patterns with many beamed notes and accents.

11

12

73

74

15

(2te + 3te Pos. Okt. tiefer) *dim*

Solo

15

Solo!

16

17

pp

pp

pp

letzten 4 Takte *moderato*

Handwritten musical score for measures 22-23. The system consists of five staves. The top staff has a treble clef and a key signature of one flat. The second and third staves are grouped with a brace and have a treble clef. The fourth and fifth staves are grouped with a brace and have a bass clef. Measure 22 contains various notes, rests, and dynamic markings like *pp* and *p*. Measure 23 continues the notation with similar markings. There are several circled numbers: 22 at the top right, 23 at the middle right, and 24 at the bottom right. The notation includes slurs, accents, and various rhythmic values.

Handwritten musical score for measures 23-24. The system consists of five staves. The top staff has a treble clef and a key signature of one flat. The second and third staves are grouped with a brace and have a treble clef. The fourth and fifth staves are grouped with a brace and have a bass clef. Measure 23 contains various notes, rests, and dynamic markings like *pp* and *p*. Measure 24 continues the notation with similar markings. There are several circled numbers: 23 at the middle right, 24 at the bottom right, and 25 at the bottom right. The notation includes slurs, accents, and various rhythmic values.

Handwritten musical score for measures 24-25. The system consists of five staves. The top staff has a treble clef and a key signature of one flat. The second and third staves are grouped with a brace and have a treble clef. The fourth and fifth staves are grouped with a brace and have a bass clef. Measure 24 contains various notes, rests, and dynamic markings like *pp* and *p*. Measure 25 continues the notation with similar markings. There are several circled numbers: 24 at the bottom right, 25 at the bottom right, and 26 at the bottom right. The notation includes slurs, accents, and various rhythmic values.

Lats

25

~~ruhig~~ frei

freies Solo (rubato)
3
rit - dur
ritto
pp

folgt $\frac{3}{4}$ Satz 2 || aber mit selber Notation
auf Normalflöte gespielt
ohne Wiederholung bis (14)
folgt!
Satz 3 (al)

COPA

⊕ CODA (Satz 3) CODA (Satz 3) ⊕

Handwritten musical score for the first system of the CODA section. It features four staves: two for woodwinds (flute and clarinet), one for strings, and one for percussion. The woodwinds play a melodic line with various accidentals and dynamics. The strings play a rhythmic accompaniment. The percussion part includes a note with the instruction '(als Horn 2+ spielen) 3+4, Marcé Posannen'. A circled 'A' is at the end of the system.

(2+3/4 Pos. Okt. Hefer)

Handwritten musical score for the second system of the CODA section. It features four staves: two for woodwinds, one for strings, and one for percussion. The woodwinds play a melodic line with various accidentals and dynamics. The strings play a rhythmic accompaniment. The percussion part includes a note with the instruction 'B'. A circled 'B' is at the end of the system.

⊕ CODA (4+ spielen — immer leiser werden)

V

(c)

Handwritten musical score for the first system, consisting of five staves. The first two staves are for strings, the third for woodwinds, and the fourth and fifth for piano. The music includes various notes, rests, and dynamic markings such as *p* and *pp*. There are also some handwritten annotations and slurs.

immer leiser werden / Tempo bleibt gleich / (D)

Handwritten musical score for the second system, continuing the piece with similar notation and dynamic markings. It includes five staves with notes, rests, and dynamic markings like *pp* and *ppp*. There are also some handwritten annotations and slurs.

Four empty musical staves at the bottom of the page, intended for further notation.

(E)

Handwritten musical score for the first system, featuring a grand staff with treble and bass clefs. The music consists of long horizontal lines across the staves, indicating sustained notes or rests. Dynamic markings include *pp* and *ppp*. A circled 'E' is located in the upper right corner of the page.

Handwritten musical score for the second system, also featuring a grand staff. This system contains more detailed notation, including notes, rests, and dynamic markings such as *pp*, *ppp*, *ff*, and *pp*. Annotations include "Solo" in a circle, "Largo" in a circle, "Fine" in a circle, and "freies Solo" written twice. A circled 'E' is also present in the upper right. The system concludes with a double bar line and the word "Finis" written vertically.

Aug 1968

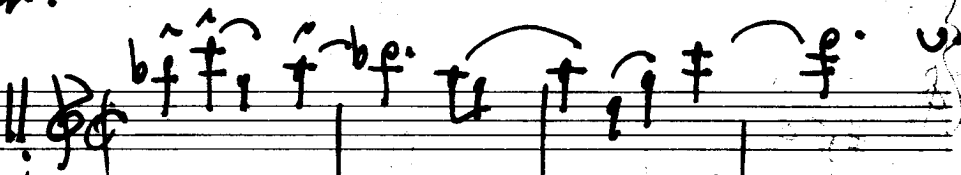
Adolf Scherbaum

Anmerkung: Schatz 1968 (1993) für Fl. Viol. Bass +
(Konzert Schlagzeug.)

Durch die ungewöhnliche Besetzung ist der Begriff
(Jazz) etwas ungewöhnlich - auch die
Harmonik (bedingt durch 2 Instrumente)
die keine Akkorde spielen können)
ist freitonal) - aber durch Rhythmus
des Basses und Schlagzeugs doch ein
Versuch - Jazzartige Passagen zu
interpretieren. - Alle Notationen (der
2 Soloinstrumente, Solo Bass, nicht genau
die notierten Notenwerte spielen -
sondern nach Vereinbarung etwas verändert
oder erweitert.

ZUM Beispiel

Notation



Schlingend



Die grünen Eintragungen (in der

Schlagzeugstimme (in der Partitur)

bedeuten (man kann auch noch ad. lobiten

3 Personen dazu nehmen!
überlassen!)

(Solo Flöte + Solo Violine - sehr viel Hall) Zusatz mit trophane -
mit Lautsprecher im Saal vorh. bei öffentlichen Aufführungen.