

URSUS

Notenheft



Allegro con buio

Satz 1

Pantitur!

Flöte

Viol.

Bass

Schlagz.

1

f

f

pp *f*

2

p

p

p

3

4

mf

f

ff

pp

ff

3 Posannens

4

Handwritten musical score for measures 4-5. The score is written on a grand staff with five staves. The top staff has a treble clef and a key signature of one sharp (F#). The second staff has a treble clef and a key signature of one sharp. The third staff has a bass clef and a key signature of one sharp. The fourth and fifth staves have bass clefs and a key signature of one sharp. The score includes various musical notations such as notes, rests, and dynamic markings like 'ffp'. There are also some handwritten annotations in green ink.

5

Handwritten musical score for measures 6-7. The score is written on a grand staff with five staves. The top staff has a treble clef and a key signature of one sharp (F#). The second staff has a treble clef and a key signature of one sharp. The third staff has a bass clef and a key signature of one sharp. The fourth and fifth staves have bass clefs and a key signature of one sharp. The score includes various musical notations such as notes, rests, and dynamic markings like 'f'. There are also some handwritten annotations in green ink.

Handwritten musical score for measures 8-9. The score is written on a grand staff with five staves. The top staff has a treble clef and a key signature of one sharp (F#). The second staff has a treble clef and a key signature of one sharp. The third staff has a bass clef and a key signature of one sharp. The fourth and fifth staves have bass clefs and a key signature of one sharp. The score includes various musical notations such as notes, rests, and dynamic markings like 'f'. There are also some handwritten annotations in green ink.

8

Handwritten musical score for measures 8-11. The system includes a treble clef staff with a key signature of one sharp (F#) and a common time signature (C). The first staff contains a melodic line with notes and rests, marked with accents (^) and a dynamic marking of **ff** in a circle. The second staff contains a rhythmic accompaniment with eighth and sixteenth notes. The third and fourth staves are empty.

9

Handwritten musical score for measures 12-15. The system includes a treble clef staff with a key signature of one sharp (F#) and a common time signature (C). The first staff contains a melodic line with notes and rests, marked with accents (^) and a dynamic marking of **ff**. The second staff contains a rhythmic accompaniment with eighth and sixteenth notes. The third and fourth staves are empty. A green annotation **fp** is written below the first staff. The word **arco** is written on the right side of the system.

10

Handwritten musical score for measures 16-19. The system includes a treble clef staff with a key signature of one sharp (F#) and a common time signature (C). The first staff contains a melodic line with notes and rests, marked with accents (^) and a dynamic marking of **f** in a circle. The second staff contains a rhythmic accompaniment with eighth and sixteenth notes. The third and fourth staves are empty. A green annotation **f** is written below the first staff.

20

21

22

23

23

24

Handwritten musical score for measures 14. The system consists of five staves. The top staff is in treble clef with a key signature of one flat (B-flat). It contains a melodic line with slurs and accents. The second staff is in treble clef with a key signature of one flat, containing a bass line with slurs and accents. The third staff is in bass clef with a key signature of one flat, containing a bass line with slurs and accents. The fourth staff is in bass clef with a key signature of one flat, containing a bass line with slurs and accents. The fifth staff is in bass clef with a key signature of one flat, containing a bass line with slurs and accents. A circled measure number '14' is at the top right.

Handwritten musical score for measures 15. The system consists of five staves. The top staff is in treble clef with a key signature of one flat. It contains a melodic line with slurs and accents. The second staff is in treble clef with a key signature of one flat, containing a bass line with slurs and accents. The third staff is in bass clef with a key signature of one flat, containing a bass line with slurs and accents. The fourth staff is in bass clef with a key signature of one flat, containing a bass line with slurs and accents. The fifth staff is in bass clef with a key signature of one flat, containing a bass line with slurs and accents. A circled measure number '15' is at the top right.

Handwritten musical score for measures 16. The system consists of five staves. The top staff is in treble clef with a key signature of one flat. It contains a melodic line with slurs and accents. The second staff is in treble clef with a key signature of one flat, containing a bass line with slurs and accents. The third staff is in bass clef with a key signature of one flat, containing a bass line with slurs and accents. The fourth staff is in bass clef with a key signature of one flat, containing a bass line with slurs and accents. The fifth staff is in bass clef with a key signature of one flat, containing a bass line with slurs and accents. A circled measure number '16' is at the top right.

16

17

1.

2.

(gitar + clar)

18

Lento Lento

19

Baß

Schlag

Bass Solo

20

21

Flöte (ruhig / frei) **ruhig (frei spielen!)**

22

23

Violin

Bass

Schlagzeug

Bass Solo

Fl. $\# \hat{e} \hat{g}'$

Viol. $\# \hat{e} \hat{g}'$

Bass Solo

Schlagz. pp

Schlagz. Solo

güt + dir

(frei) Flöte Solo! frei

P.S.

Satz 1

al ϕ

COPRA

CODA (Part 1)

string. →

FIN

Satz (2)

Einleitung

Flöte!

1

3

ruhig - aber nicht sploppend!

pp Solo Pos. 2

2

fp =

f =

Solo (Pos. 1.)

3

f

f

f

3

weiter

9

5

6

7

(Normalflöte) etwas bewegen

→ accel.

8

steigern Tempo →

poco rit

breit

(bei - ruhig) !

11

D.C.
 Satz 2 od. CODA

CODA

(rit) !

Handwritten musical score for strings and woodwinds. The score consists of five staves. The top four staves are for woodwinds (Flute, Clarinet, Bassoon, and Saxophone) and the bottom staff is for strings. The notation includes various notes, rests, and dynamic markings such as *pp*, *ppp*, and *pp*. There are also some handwritten annotations in green ink, including a circled *ppp* and some rhythmic markings.

Handwritten musical score for Bass and Drums. The top staff is for Bass (labeled "Baß") and the bottom staff is for Drums (labeled "Schlagzeug"). The Bass staff has a circled *frei* and a circled *pp*. The Drums staff has a circled *pp*. The notation includes various notes, rests, and dynamic markings such as *pp* and *ppp*. There are also some handwritten annotations in green ink, including a circled *frei*, a circled *pp*, and a circled *ppp*. The word "Fine" is circled at the end of the piece.

Handwritten notes in the top right corner, possibly including a circled number '17'.

Handwritten musical notation on ten systems of five-line staves. The notation is very faint and includes various symbols such as notes, stems, and circled numbers. Some legible fragments include '17', '18', '19', '20', '21', '22', '23', '24', '25', '26', '27', '28', '29', '30', '31', '32', '33', '34', '35', '36', '37', '38', '39', '40', '41', '42', '43', '44', '45', '46', '47', '48', '49', '50', '51', '52', '53', '54', '55', '56', '57', '58', '59', '60', '61', '62', '63', '64', '65', '66', '67', '68', '69', '70', '71', '72', '73', '74', '75', '76', '77', '78', '79', '80', '81', '82', '83', '84', '85', '86', '87', '88', '89', '90', '91', '92', '93', '94', '95', '96', '97', '98', '99', '100'. There are also some circled numbers and arrows scattered throughout the page.

Presto (Prestissimo)

Satz 3

1

Solo!

p *pp*

2

p

3

p *f* *pp*

Handwritten musical score for measures 4 and 5. The system includes a Flute part (top staff), a Violin part (middle staff), and a Bass/Drum part (bottom staff). Measure 4 contains a rest for the Flute and Violin, while the Bass/Drum part plays a rhythmic pattern. Measure 5 features melodic lines for all instruments. A circled '4' is in the top right corner.

Handwritten musical score for measures 6 and 7. The system includes a Flute part (top staff), a Violin part (middle staff), and a Bass/Drum part (bottom staff). Measure 6 contains a rest for the Flute and Violin, while the Bass/Drum part plays a rhythmic pattern. Measure 7 features melodic lines for all instruments. A circled '5' is in the top right corner.

Handwritten musical score for measures 8 and 9. The system includes a Flute part (top staff), a Violin part (middle staff), and a Bass/Drum part (bottom staff). Measure 8 contains a rest for the Flute and Violin, while the Bass/Drum part plays a rhythmic pattern. Measure 9 features melodic lines for all instruments. A circled '6' is in the top right corner. There are additional circled annotations: a circled 'ff' in the bottom left, a circled '97' with a note, and a circled '98' with a note.

Handwritten musical score for measures 7 and 8. The system includes a Flute part (top staff) with trills and slurs, a Violin part (middle staff) with notes and slurs, and a Bass part (bottom staff) with notes and slurs. A green bracket on the left indicates the string section. Measure 7 is circled with a '7' and measure 8 with an '8'. A circled 'arco' is written on the right side of the system.

Handwritten musical score for measures 9 and 10. The system includes a Flute part (top staff) with notes and slurs, a Violin part (middle staff) with notes and slurs, and a Bass part (bottom staff) with notes and slurs. A green bracket on the left indicates the string section. Measure 9 is circled with a '9' and measure 10 with a '10'. A circled 'arco' is written on the left side of the system.

Handwritten musical score for measures 11 and 12. The system includes a Flute part (top staff) with notes and slurs, a Violin part (middle staff) with notes and slurs, and a Bass part (bottom staff) with notes and slurs. A green bracket on the left indicates the string section. Measure 11 is circled with a '11' and measure 12 with a '12'.

11

12

73

74

Solo (2te + 3te Pos. OKT. tiefer) dun

14 p 15

Solo!

p 15

pp p 16 22

letzten 4 Takte nochmals

Handwritten musical score for measures 18 and 19. The score is written for Flute (Fl.), Violin (Vi.), and Bass (Ba.).

Measure 18: Flute part has notes $\#2$, 9 , 9 , 9 , $b9$, $b9$, $b9$, 9 , 9 . Dynamic $f=$. Bass part has notes $b9$, 9 . Dynamic $f=$. Violin part has notes d , d . Dynamic $f=$.

Measure 19: Flute part has notes $b9$, $b9$, 9 , 9 . Dynamic ff . Bass part has notes $b9$, $b9$, $b9$, d , d . Dynamic ff . Violin part has notes d , d . Dynamic ff .

Annotations for measure 19: 7 9 Takte modulars (2te+3tes OKT. tiefer) (3. Pos. Saunen) tiefer

Handwritten musical score for measures 20 and 21. The score is written for Flute (Fl.), Violin (Vi.), and Bass (Ba.).

Measure 20: Flute part has notes $\#9$, $\#9$, $\#9$, $\#9$. Violin part has notes d , d , d , d . Bass part has notes 9 , 9 , 9 , 9 .

Measure 21: Flute part has notes $\#9$, $\#9$, $\#9$, $\#9$. Violin part has notes d , d , d , d . Bass part has notes 9 , 9 , 9 , 9 .

Handwritten musical score for measures 22 and 23. The score is written for Flute (Fl.), Violin (Vi.), and Bass (Ba.).

Measure 22: Flute part has notes $\#9$, $\#9$, $\#9$, $\#9$. Violin part has notes d , d , d , d . Bass part has notes 9 , 9 , 9 , 9 .

Measure 23: Flute part has notes $\#9$, $\#9$, $\#9$, $\#9$. Violin part has notes d , d , d , d . Bass part has notes 9 , 9 , 9 , 9 .

Annotations for measure 23: 2 3 3 3 (3te Pos. OKT. tiefer)

Handwritten musical score for measures 22-23. The system includes five staves: Flute (top), Violin I, Violin II, Viola, and Cello/Double Bass. Measure 22 features complex rhythmic patterns and accidentals. Measure 23 shows a continuation of the rhythmic structure. A circled '22' is at the top right, and a circled '23' is at the bottom right. A green circle with a cross symbol is on the right margin.

Handwritten musical score for measures 23-24. The system includes five staves. Measure 23 continues the previous system. Measure 24 features a 'Solo' section for the Cello/Double Bass, indicated by a circled 'Solo' and a circled 'p'. A circled '23' is at the top right, and a circled '24' is at the bottom right. The word 'din' is written below the bass staff in measure 24.

Handwritten musical score for measures 24-25. The system includes five staves. Measure 24 continues the previous system. Measure 25 features a 'Solo' section for the Cello/Double Bass, indicated by a circled 'Solo' and a circled 'pp'. A circled '24' is at the top right, and a circled 'D.C.' is at the bottom right. The word 'D.C.' is also written in a green circle on the right margin.

Satz

25

~~ruhig~~ frei

Handwritten musical score for the first system. It features a flute part and piano accompaniment. The flute part has a circled 'pp' dynamic marking. The piano part includes a circled '4' and a circled 'pp' dynamic marking. The score includes notes, rests, and performance instructions like 'freies Solo (rubato)' and 'gitarren'.

Handwritten musical score for the second system, enclosed in a large bracket. It contains a circled '3/4' time signature and the text 'Satz 2' followed by instructions: 'aber mit selber Notation auf Normalflöte gespielt ohne Wiederholung bis (14)'. Below this, it says 'folgt!' and 'Satz 3 (al)'. The system ends with 'CODA'.

Handwritten musical score for the third system, consisting of several empty staves with some faint markings and a circled 'al' marking.

⊕ CODA (Satz 3) CODA (Satz 3) ⊕

⊕ CODA (Satz 3) CODA (Satz 3) ⊕

(a3 nur 2+ spielen) 3+4+ (acet Posavuen)

(2+3te Pos. Okt. Hefer)

⊕ CODA (Satz 3) CODA (Satz 3) ⊕

> = b d e

B

⊕ CODA (4+ spielen - nur leiser werden)

(c)

Handwritten musical score for the first system, measures 1-4. It features five staves: two for woodwinds (flute and oboe), one for strings, one for piano, and one for bass. The woodwinds play melodic lines with accents and slurs. The strings play a rhythmic pattern. The piano part has chords with slurs. The bass part has a simple rhythmic line. A large green bracket groups the woodwind and piano parts.

immer leiser werden / Tempo bleibt gleich

(d)

Handwritten musical score for the second system, measures 5-8. It features five staves: two for woodwinds (flute and oboe), one for strings, one for piano, and one for bass. The woodwinds play melodic lines with accents and slurs. The strings play a rhythmic pattern. The piano part has chords with slurs. The bass part has a simple rhythmic line. A large green bracket groups the woodwind and piano parts.

⑤

Handwritten musical score for the first system, featuring three staves. The top two staves are mostly blank with a few notes. The bottom staff contains a rhythmic pattern of eighth notes, marked with *ppp* and *v*. A large green bracket on the left side encompasses the first two staves.

Handwritten musical score for the second system, featuring three staves. The top two staves contain melodic lines with various dynamics like *pp* and *ff*. The bottom staff has a rhythmic pattern with dynamics *ppp* and *pp*. Annotations include *Solo* in a circle, *ff* in a circle, and *3Pos. 2*. A green circle highlights the word *Contra* in the right margin, with *Fine* written below it. A thick black vertical bar is drawn on the right side of the staves.

Aug 1968

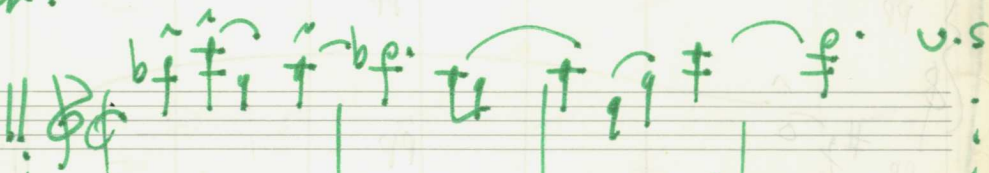
Adolf Scherbaum

Anmerkung: ~~1968~~ 1968 (1933) für Fl. Viol. Bass +
(Konzert) Schlagzeug.)

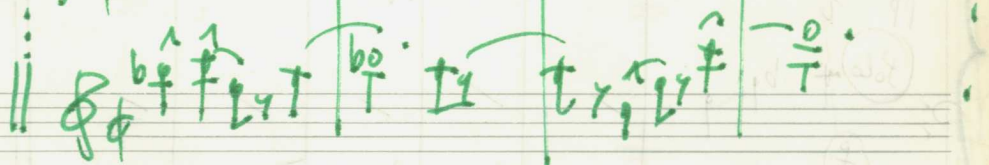
Durch die ungewöhnliche Besetzung ist der Begriff
(Jazz) etwas ungewöhnlich - auch die
Harmonik (bedingt durch 2 Instrumente)
die keine Akkorde spielen können)
ist freitonal) - aber durch Rhythmus
des Basses und Schlagzeugs doch ein
Versuch - Jazzartige Passagen zu
interpretieren. - Alle Notationen (der
2 Soloinstrumente, Solo Bass, nicht genau
die notierten Notenwerte spielen -
sondern nach Vereinbarung etwas verkürzt
oder erweitert.

ZUM Beispiel

Notation



klingend



(Die grünen Eintragungen (in der
Schlagzeugstimme (in der Partitur)

bedeuten (man kann auch noch ad. Libitum

3 Personen dazu ^{nehmen!} ~~nehmen!~~ nehmen!)

(Solo Flöte + Solo Violine - sehr viel (Hall) Zusatz, mit Microphone -
mit Lautsprecher im Saal) bei öffentlichen Aufführungen.