

[423/14-2]

L.V. BEETHOVEN



W.A. MOZART



# NOTENHEFT

F. SCHUBERT



J. HAYDN



J. STRAUSS



MADE IN AUSTRIA

© 1998 Schott Music, Inc. All rights reserved. Printed in Austria.

4 Teile für Klarinette und Cello Solo

1968 Adolf Scherbaum

(1)

Klarinette (in B) (frei) (in C notiert)

3/4

Cello 4/4 **ff** frei rubato

(2)

(3)

ruhig

**ffpp**

**pp**

**pppp**

arco

(4)

rubato

**ff**

**pppp**

arco

4) sehr ruhig (wie ein Blues) 5) 6)

sehr klingend (p133)

7) 8)

breit 9) 10)

11) 12)

Handwritten musical score for the first system. It features a treble clef staff with a key signature of one flat (B-flat) and a common time signature. The music includes a series of ascending sixteenth notes. Annotations include "grüßes Solo!" and "rubato" circled in blue. A circled measure number "92" is at the end of the system. The word "arco" is written in a circle below the first measure.

Handwritten musical score for the second system. It features a treble clef staff with a key signature of one flat (B-flat) and a common time signature. The music includes a series of ascending sixteenth notes. Annotations include "freihand" with an arrow pointing right and a circled measure number "93".

Handwritten musical score for the third system. It features a treble clef staff with a key signature of one flat (B-flat) and a common time signature. The music includes a series of ascending sixteenth notes. Annotations include "sehr rubato bewegt" and "(mit dem zurück) mit dem". Circled measure numbers "14" and "15" are present. A box on the right side contains the letters "G." and "P." stacked vertically.

Handwritten musical score for the fourth system. It features a treble clef staff with a key signature of one flat (B-flat) and a common time signature. The music includes a series of ascending sixteenth notes. Annotations include "Luzya" and "rubato". A circled measure number "FIN" is at the end of the system. The word "arco" is written in a circle below the first measure.

2

Presto/legg.

Handwritten musical notation for the first system, featuring a grand staff with treble and bass clefs. The music is in 3/8 time. The first measure includes a circled 'pizz' in the bass staff. The second measure has an accent (^) over a group of notes. The third measure has an accent (^) over a note. The fourth measure has an accent (^) over a note. The fifth measure has an accent (^) over a note. The sixth measure has an accent (^) over a note. The seventh measure has an accent (^) over a note. The eighth measure has an accent (^) over a note. The piece ends with a circled '1' in the upper right corner.

Handwritten musical notation for the second system, featuring a grand staff with treble and bass clefs. The music continues from the first system. The first measure has an accent (^) over a note. The second measure has an accent (^) over a note. The third measure has an accent (^) over a note. The fourth measure has an accent (^) over a note. The fifth measure has an accent (^) over a note. The sixth measure has an accent (^) over a note. The seventh measure has an accent (^) over a note. The eighth measure has an accent (^) over a note. The piece ends with a circled '2' in the upper right corner.

Handwritten musical notation for the third system, featuring a grand staff with treble and bass clefs. The music continues from the second system. The first measure has an accent (^) over a note. The second measure has an accent (^) over a note. The third measure has an accent (^) over a note. The fourth measure has an accent (^) over a note. The fifth measure has an accent (^) over a note. The sixth measure has an accent (^) over a note. The seventh measure has an accent (^) over a note. The eighth measure has an accent (^) over a note. The piece ends with a circled '3' in the upper right corner.

Handwritten musical notation for the fourth system, featuring a grand staff with treble and bass clefs. The music continues from the third system. The first measure has an accent (^) over a note. The second measure has an accent (^) over a note. The third measure has an accent (^) over a note. The fourth measure has an accent (^) over a note. The fifth measure has an accent (^) over a note. The sixth measure has an accent (^) over a note. The seventh measure has an accent (^) over a note. The eighth measure has an accent (^) over a note. The piece ends with a circled '4' in the upper right corner.

④

arco

⑤

⑥

pizz

⑦

pizz

⑧

Coda

dim

8 9

10

*pizz*

11

12

*arco*

Handwritten musical score for measures 13 and 14. The system includes a treble clef staff and a bass clef staff. Measure 13 features a wavy line in the treble staff and a circled measure number '13'. The bass staff contains notes with accents and a circled 'ff' dynamic marking. Measure 14 continues the wavy line in the treble staff and has a circled measure number '14'.

Handwritten musical score for measures 15 and 16. The system includes a treble clef staff and a bass clef staff. Measure 15 features a wavy line in the treble staff and a circled measure number '15'. The bass staff contains notes with accents and a circled 'ff' dynamic marking. Measure 16 continues the wavy line in the treble staff and has a circled measure number '16'.

Handwritten musical score for measures 17 and 18. The system includes a treble clef staff and a bass clef staff. Measure 17 features a wavy line in the treble staff and a circled measure number '17'. The bass staff contains notes with accents and a circled 'pizz' marking. Measure 18 continues the wavy line in the treble staff and has a circled measure number '18'.

Handwritten musical score for measures 19 and 20. The system includes a treble clef staff and a bass clef staff. Measure 19 features a wavy line in the treble staff and a circled measure number '19'. The bass staff contains notes with accents and a circled 'ff' dynamic marking. Measure 20 continues the wavy line in the treble staff and has a circled measure number '20'.



16

17

Handwritten musical notation for measures 16 and 17. Measure 16 features a piano part with a circled **ff** dynamic and the instruction **arco** circled. The notes are marked with accents and slurs. Measure 17 continues the melodic line with similar markings.

18

Handwritten musical notation for measures 18 and 19. Measure 18 shows a piano part with a circled **f** dynamic and the instruction **din** circled. Measure 19 continues with a circled **p** dynamic. Both measures feature complex melodic lines with slurs and accents.

19

Handwritten musical notation for measures 19 and 20. Measure 19 features a piano part with a circled **ff** dynamic. Measure 20 continues with a circled **ff** dynamic. The notation includes slurs and accents.

20

Handwritten musical notation for measures 20 and 21. Measure 20 features a piano part with a circled **ff** dynamic. Measure 21 is marked **D.C. al Fine** and includes a circled **ff** dynamic. The notation includes slurs and accents.

Handwritten musical score for the first system. The top staff is a treble clef with a circled 'C' and the instruction 'noch auch →'. The bottom staff is a bass clef with a circled 'F' at the end. The music includes a long slur over the top staff, a circled 'pp' dynamic marking, and the instruction 'hart pizz' with an accent. There are several notes with accents and slurs in the bass staff.

Handwritten musical score for the second system. The top staff is a treble clef with a circled 'B' at the end. The bottom staff is a bass clef with a circled 'Aria' and a circled '7H' at the beginning. The music features a long slur over the top staff and notes with accents and slurs in the bass staff.

Handwritten musical score for the third system. The top staff is a treble clef with a circled 'Fin' at the end. The bottom staff is a bass clef with a circled '7H' at the beginning. The music includes a long slur over the top staff, a circled 'ppp' dynamic marking, and the instruction 'ausblenden lassen'. There are also notes with accents and slurs in the bass staff.

3.

(mit größtem Hall-) —

ganz frei / ruhig (mit etwas Vibrato) —

Handwritten musical notation for the first system, measures 1-2. The treble clef staff contains a melodic line with slurs and accents. The bass clef staff contains a bass line with a whole note chord. Dynamics include 'pp' and 'p'.

1

Handwritten musical notation for the second system, measures 3-4. The treble clef staff contains a melodic line with slurs and accents. The bass clef staff contains a bass line with a whole note chord. Dynamics include 'p' and 'f'. A circled '2' is at the end of the system. A circled 'C' with 'CODA!' is written below the staff.

schreitend (sehr ruhig / leuts)

3

Handwritten musical notation for the third system, measures 5-6. The treble clef staff contains a melodic line with slurs and accents. The bass clef staff contains a bass line with a whole note chord. Dynamics include 'pp' and 'p'. A circled '3' is at the end of the system. The word 'CON SORP.' is written in the left margin.

ganz (nicht Tremolo) flimmernd

Handwritten musical score for measures 4 and 5. The system consists of two staves. Measure 4 is marked with a circled '4' at the end. The notation includes various notes, rests, and dynamic markings such as  $mf$  and  $pp$ . A fermata is present over the final note of measure 4.

Handwritten musical score for measures 6 and 7. The system consists of two staves. Measure 6 is marked with a circled '6' at the end. The notation includes notes, rests, and dynamic markings such as  $mf$  and  $pp$ . A fermata is present over the final note of measure 6.

Handwritten musical score for measures 8 and 9. The system consists of two staves. Measure 8 is marked with a circled '8' at the end. The notation includes notes, rests, and dynamic markings such as  $f$  and  $pp$ . A fermata is present over the final note of measure 8. The instruction "steigern - im Tempo" is written above the staff. The instruction "(dicht Tremolo) -" is written below the first staff.

Handwritten musical score for measures 10 and 11. The system consists of two staves. Measure 10 is marked with a circled '10' at the end. The notation includes notes, rests, and dynamic markings such as  $pp$  and  $mf$ . A fermata is present over the final note of measure 10. The instruction "arcel." with an arrow is written above the first staff. The instruction "arco" is written below the first staff.

*sehr bewegt - vivace (rubato)*

8

7

9

10

11

P133

arco

mit dem

aus Nichts —

12

pppp

D.C. al  $\text{COPB}$

$\text{COPB}$  oder frei — mit größter Ruhe —

Klarinette (frei) (legg. (wie ein Hauch) —

Lunga

FIN

ppp

## Teil ④

(ist wieder Teil 2)

(aber ohne jede Wiederholung - ~~oder~~ -  
sondern nur P.C. (ohne III) ad  $\phi$  Coda -  
durchgehend. —)

N.B. (bei Radioaufnahme - großer Hall -

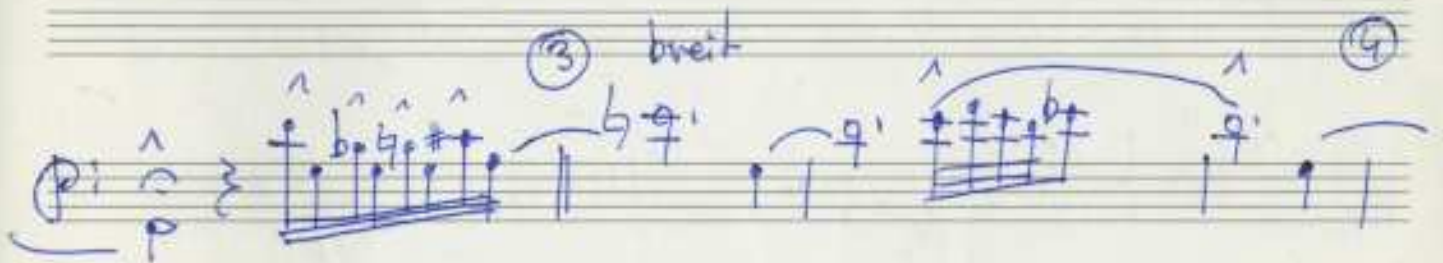
bei öffentlichen Aufführungen - wenn möglich -  
jeder Solist ein eigenes Mikrophon -  
100 Verstärker - Lautsprecher im Saal  
verteilt sind. —

Die Kompositionen sind nach in freier  
Tonalität geschrieben - mit kleinen Themen -  
die immer wieder durch die Sätze ziehen. —

Ling Adolf Scherbaum  
1968.

# Solo für Cello —

frei rubato freies Solo



F 133

F 153 Scherbaum 423/2

Adolf Scherbaum, 4 Teile für Violine und Cello Solo, BWV 429 (1963)

© 2010/1991 Adalbert Scherbaum, Alle Rechte vorbehalten

MUSIKSAMMLUNG  
ÖSTERREICH  
NATURALSCHULBIBLIOTHEK



7

arco

scha hektisch (aber nach mir hin)

10

pp

quasi breiter

(wieder sehr schnell)

12

pp

(Zweite pr. rit)

Leute Flage

13

P.C. nel

cora

cora (frei (Leute))

Leute

Loupa

pp

gitteln

15

pp