

Fantasie über ein
Volkslied (1545)
für gr. Orgel

Notenheft

Adolf Schubert

Fantasie für Orgel

1968

(über ein Volkslied (1545))

Adolf Scherbaum

ruhig flüchtig (Andante)

3/4 pp

1

2

Handwritten musical notation for the first system. The treble clef staff contains a sequence of notes with slurs and dynamic markings, including a 'p' (piano) marking. The bass clef staff shows a few notes and rests.

Handwritten musical notation for the second system. The treble clef staff continues the melodic line with slurs and a 'p' marking. The bass clef staff has a few notes and rests.

Handwritten musical notation for the third system. A circled number '3' is positioned above the treble clef staff. The notation continues with notes and rests in both staves.

Handwritten musical notation for the fourth system. A circled number '4' is positioned above the treble clef staff. The notation concludes with notes and rests in both staves.

Handwritten musical notation for the first system. The treble staff contains four measures of music with notes and accidentals. A dashed line above the treble staff has notes 'd', 'b d', 'd', and 'd'. The bass staff has a single note in the first measure.

Handwritten musical notation for the second system. The treble staff contains four measures of music with notes and accidentals. A dashed line above the treble staff has notes 'd', 'b d', 'd', and 'd'. The bass staff has a single note in the first measure.

Handwritten musical notation for the third system. The treble staff contains four measures of music with notes and accidentals. A dashed line above the treble staff has notes 'd', 'b d', 'd', and 'd'. The bass staff has a single note in the first measure.

Handwritten musical notation for the fourth system. The treble staff contains four measures of music with notes and accidentals. A dashed line above the treble staff has notes 'd', 'b d', 'd', and 'd'. The bass staff has a single note in the first measure. A circled '2' is visible in the right margin.

5

Handwritten musical notation for the first system, measures 1-4. The top staff contains a melodic line with eighth notes and slurs, and the bottom staff contains a bass line with quarter notes.

Handwritten musical notation for the second system, measures 5-8. The top staff continues the melodic line with eighth notes and slurs, and the bottom staff continues the bass line with quarter notes.

Handwritten musical notation for the third system, measures 9-12. The top staff continues the melodic line with eighth notes and slurs, and the bottom staff continues the bass line with quarter notes.

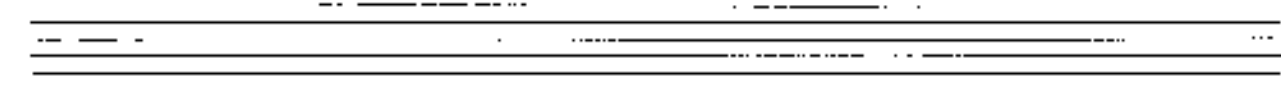
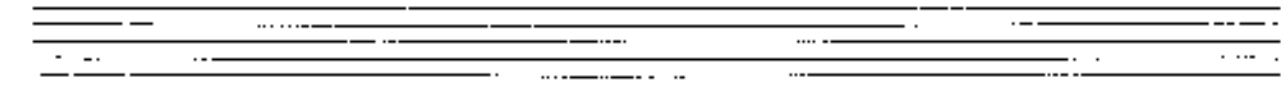
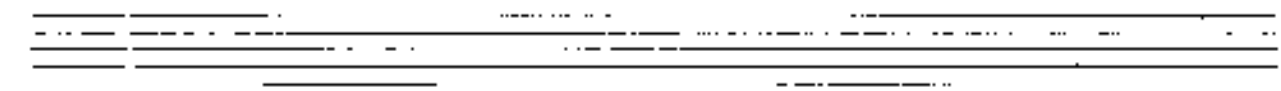
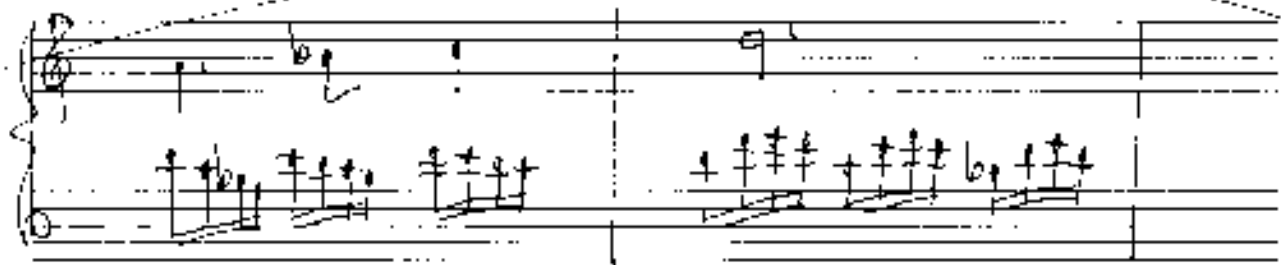
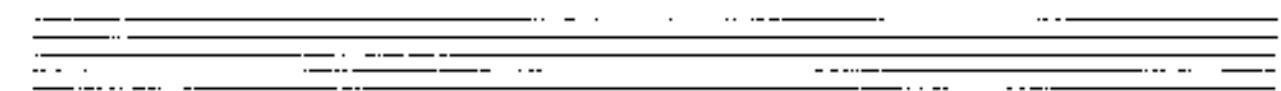
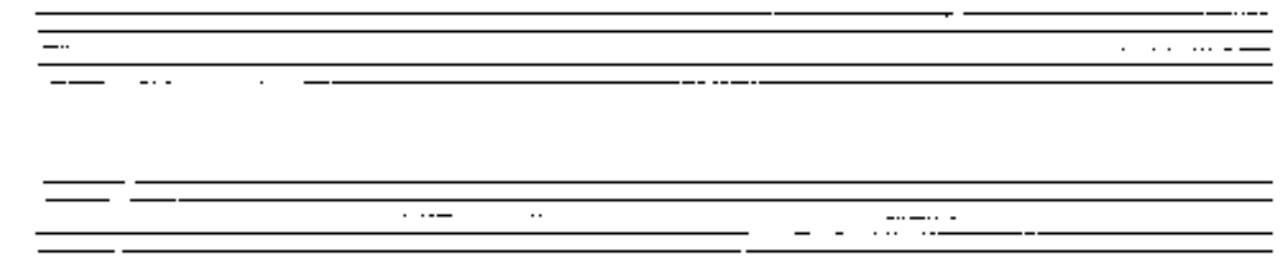
Handwritten musical notation for the fourth system, measures 13-16. The top staff continues the melodic line with eighth notes and slurs, and the bottom staff continues the bass line with quarter notes.

Handwritten musical notation for the first system. The treble staff contains a melodic line with notes and accidentals (flats and naturals) and is marked with a circled 'b'. The bass staff contains a bass line with notes and accidentals. A circled 'b' is also present at the end of the system.

Handwritten musical notation for the second system. The treble staff contains a melodic line with notes and accidentals (flats and naturals) and is marked with a circled 'b'. The bass staff contains a bass line with notes and accidentals. A circled 'b' is also present at the end of the system.

Handwritten musical notation for the third system. The treble staff contains a melodic line with notes and accidentals. The bass staff contains a bass line with notes and accidentals.

Handwritten musical notation for the fourth system. The treble staff contains a melodic line with notes and accidentals. The bass staff contains a bass line with notes and accidentals.



8

Handwritten musical notation for exercise 8, measures 1-2. The top staff is in treble clef with a key signature of two flats (B-flat and E-flat). The bottom staff is in bass clef. Both staves are connected by a brace on the left. The notation includes notes, rests, and accidentals. A fermata is placed over the first measure of the top staff. The bottom staff features a complex rhythmic pattern with many beamed notes.

9

Handwritten musical notation for exercise 9, measures 1-2. The top staff is in treble clef with a key signature of two flats. The bottom staff is in bass clef. The notation includes notes, rests, and accidentals. A fermata is placed over the first measure of the top staff. The bottom staff features a complex rhythmic pattern with many beamed notes.

Handwritten musical notation for exercise 9, measures 3-4. The top staff is in treble clef with a key signature of two flats. The bottom staff is in bass clef. The notation includes notes, rests, and accidentals. A fermata is placed over the first measure of the top staff. The bottom staff features a complex rhythmic pattern with many beamed notes.

Handwritten musical notation for exercise 9, measures 5-6. The top staff is in treble clef with a key signature of two flats. The bottom staff is in bass clef. The notation includes notes, rests, and accidentals. A fermata is placed over the first measure of the top staff. The bottom staff features a complex rhythmic pattern with many beamed notes.

10

Handwritten musical notation for system 10, measures 1-2. The system consists of two staves. The upper staff is in treble clef and contains a few notes with stems. The lower staff is in bass clef and contains a complex sequence of notes, including many accidentals (sharps and flats) and some beamed notes.

Handwritten musical notation for system 10, measures 3-4. The system consists of two staves. The upper staff contains notes with stems and some accidentals. The lower staff contains a complex sequence of notes with many accidentals and beamed notes.

11

Handwritten musical notation for system 11, measures 1-2. The system consists of two staves. The upper staff contains notes with stems and some accidentals. The lower staff contains a complex sequence of notes with many accidentals and beamed notes.

Handwritten musical score for the first system. It consists of a grand staff with three staves. The top two staves are in treble clef, and the bottom staff is in bass clef. The music is marked with a piano (*p*) dynamic. The notation includes various notes, rests, and slurs, with some notes marked with a 'p' in a circle. The system is divided into two measures by a vertical bar line.

Handwritten musical score for the second system. It consists of a grand staff with three staves. The top two staves are in treble clef, and the bottom staff is in bass clef. The music is marked with a piano (*p*) dynamic. The notation includes various notes, rests, and slurs, with some notes marked with a 'p' in a circle. The system is divided into two measures by a vertical bar line.

Handwritten musical score for the third system. It consists of a grand staff with three staves. The top two staves are in treble clef, and the bottom staff is in bass clef. The music is marked with a piano (*p*) dynamic. The notation includes various notes, rests, and slurs, with some notes marked with a 'p' in a circle. The system is divided into two measures by a vertical bar line.

Handwritten musical score for the first system. The top staff is in treble clef and contains a melodic line with notes on G4, A4, B4, and C5, connected by a slur. The bottom staff is in bass clef and contains a bass line with notes on G3, F3, and E3, also connected by a slur. There are various annotations, including a 'd' with a colon above the first note and some handwritten symbols.

Handwritten musical score for the second system. The top staff is in treble clef and contains a melodic line with notes on G4, A4, B4, and C5, connected by a slur. The bottom staff is in bass clef and contains a bass line with notes on G3, F3, and E3, also connected by a slur. There are various annotations, including a 'd' with a colon above the first note and some handwritten symbols.

Handwritten musical score for the third system. The top staff is in treble clef and contains a melodic line with notes on G4, A4, B4, and C5, connected by a slur. The bottom staff is in bass clef and contains a bass line with notes on G3, F3, and E3, also connected by a slur. There are various annotations, including a 'd' with a colon above the first note and some handwritten symbols.

Handwritten musical score for the first system. It consists of three staves. The top staff is a treble clef with a key signature of one flat (Bb) and a common time signature (C). It contains a melodic line with notes, rests, and accidentals. The middle staff is a bass clef with a key signature of one flat (Bb) and a common time signature (C). It contains a bass line with notes and rests. The bottom staff is a grand staff (treble and bass clefs) with a key signature of one flat (Bb) and a common time signature (C). It contains a piano accompaniment with notes and rests.

Handwritten musical score for the second system. It consists of three staves. The top staff is a treble clef with a key signature of one flat (Bb) and a common time signature (C). It contains a melodic line with notes, rests, and accidentals. The middle staff is a bass clef with a key signature of one flat (Bb) and a common time signature (C). It contains a bass line with notes and rests. The bottom staff is a grand staff (treble and bass clefs) with a key signature of one flat (Bb) and a common time signature (C). It contains a piano accompaniment with notes and rests.

Handwritten musical score for the third system. It consists of three staves. The top staff is a treble clef with a key signature of one flat (Bb) and a common time signature (C). It contains a melodic line with notes, rests, and accidentals. The middle staff is a bass clef with a key signature of one flat (Bb) and a common time signature (C). It contains a bass line with notes and rests. The bottom staff is a grand staff (treble and bass clefs) with a key signature of one flat (Bb) and a common time signature (C). It contains a piano accompaniment with notes and rests.

Handwritten musical score for the first system. The treble clef staff contains a melodic line with notes G4, A4, B4, C5, and D5, with accidentals (sharps) and slurs. The bass clef staff contains a bass line with notes G3, F3, E3, and D3. The system is divided into two measures by a vertical bar line.

Handwritten musical score for the second system. The treble clef staff contains a melodic line with notes G4, A4, B4, C5, and D5, with accidentals (sharps) and slurs. The bass clef staff contains a bass line with notes G3, F3, E3, and D3. The system is divided into two measures by a vertical bar line.

Handwritten musical score for the third system. The treble clef staff contains a melodic line with notes G4, A4, B4, C5, and D5, with accidentals (sharps) and slurs. The bass clef staff contains a bass line with notes G3, F3, E3, and D3. The system is divided into two measures by a vertical bar line.

15

Handwritten musical notation for the first system. It consists of three staves: a treble clef staff at the top, a piano (p) staff in the middle, and a bass clef staff at the bottom. The treble staff contains a melodic line with a circled '15' above it. The piano staff contains a series of chords and notes. The bass staff contains a simple bass line. A circled 'pp' is written below the bass staff.

Handwritten musical notation for the second system. It consists of three staves: a treble clef staff at the top, a piano (p) staff in the middle, and a bass clef staff at the bottom. The treble staff contains a melodic line. The piano staff contains a series of chords and notes. The bass staff contains a simple bass line.

Handwritten musical notation for the third system. It consists of three staves: a treble clef staff at the top, a piano (p) staff in the middle, and a bass clef staff at the bottom. The treble staff contains a melodic line. The piano staff contains a series of chords and notes. The bass staff contains a simple bass line.

Handwritten text at the bottom of the page, possibly a signature or title.

Handwritten musical score for the first system. The top staff is a treble clef staff with a melodic line. It begins with a '309' marking. The middle and bottom staves form a grand staff with a bass line. The music includes slurs, accidentals, and dynamic markings.

Handwritten musical score for the second system. It continues the piece with a treble clef staff and a grand staff. The treble staff shows a continuation of the melodic line with various notes and slurs.

Handwritten musical score for the third system. It features a treble clef staff and a grand staff. The word "rest" is written in the middle of the grand staff. A circled "11" is visible in the upper right corner of the system.

Handwritten title: "Handwritten Title"

Handwritten musical score for the first system, featuring five staves with treble and bass clefs, a key signature of one sharp (F#), and a common time signature (C). The notation includes a melodic line with many notes and stems, and some chords. There are some handwritten annotations like 'C', 'F#', and 'C'.

Handwritten musical score for the second system, featuring five staves with treble and bass clefs, a key signature of one sharp (F#), and a common time signature (C). The notation includes a melodic line with many notes and stems, and some chords. There are some handwritten annotations like 'C'.

Handwritten musical score for the third system, featuring five staves with treble and bass clefs, a key signature of one sharp (F#), and a common time signature (C). The notation includes a melodic line with many notes and stems, and some chords. There are some handwritten annotations like 'C', 'F#', and 'C'.

Handwritten text at the bottom of the page, possibly a signature or date.

Handwritten musical notation for the first system. The treble clef staff contains a melodic line with a series of eighth notes, starting on a middle C and ascending. The bass clef staff contains a chordal accompaniment with a C major chord (C-E-G) and a D major chord (D-F-A). A large slur covers the entire system.

Handwritten musical notation for the second system. The treble clef staff contains a melodic line with a series of eighth notes, starting on a middle C and ascending. The bass clef staff contains a chordal accompaniment with a C major chord (C-E-G) and a D major chord (D-F-A). A large slur covers the entire system.

Handwritten musical notation for the third system. The treble clef staff contains a melodic line with a series of eighth notes, starting on a middle C and ascending. The bass clef staff contains a chordal accompaniment with a C major chord (C-E-G) and a D major chord (D-F-A). A large slur covers the entire system.

Handwritten musical notation for the fourth system. The treble clef staff contains a melodic line with a series of eighth notes, starting on a middle C and ascending. The bass clef staff contains a chordal accompaniment with a C major chord (C-E-G) and a D major chord (D-F-A). A large slur covers the entire system.

rit. molto

Handwritten musical score for the first system. It consists of two staves. The upper staff is in treble clef and contains a series of notes with stems, some marked with 'f' (forte) and 'rit.' (ritardando). The lower staff is in bass clef and contains a few notes and rests. There are some handwritten annotations and a circled 'b' in the upper left.

Handwritten musical score for the second system. It consists of two staves. The upper staff is in treble clef and contains a series of notes with stems, some marked with 'f' (forte) and 'rit.' (ritardando). The lower staff is in bass clef and contains a few notes and rests. There are some handwritten annotations and a circled 'b' in the upper left.

Handwritten musical score for the third system. It consists of two staves. The upper staff is in treble clef and contains a series of notes with stems, some marked with 'f' (forte) and 'rit.' (ritardando). The lower staff is in bass clef and contains a few notes and rests. There are some handwritten annotations, including a circled 'rit.' and a circled '15' in the upper right.

Andante (moderato)

Handwritten musical score for the first system. The treble clef staff contains a melody with slurs and accents. The bass staff contains a simple accompaniment with chords and a single note.

Handwritten musical score for the second system. The treble clef staff shows more complex rhythmic patterns and slurs. The bass staff continues with chords and a single note.

Handwritten musical score for the third system. The treble clef staff features a final melodic phrase with slurs. The bass staff concludes with a final chord and a single note.

Handwritten musical score system 1. It consists of three staves. The top staff is in treble clef with a key signature of one sharp (F#) and a common time signature (C). The middle and bottom staves are in bass clef. The music features a melodic line in the treble staff and a harmonic accompaniment in the bass staves. A large slur covers the first two measures, and another slur covers the last two measures. The notes are mostly quarter and eighth notes.

Handwritten musical score system 2. It consists of three staves. The top staff is in treble clef with a key signature of one sharp (F#) and a common time signature (C). The middle and bottom staves are in bass clef. The music continues from the previous system. A large slur covers the first two measures, and another slur covers the last two measures. The notes are mostly quarter and eighth notes.

Handwritten musical score system 3. It consists of three staves. The top staff is in treble clef with a key signature of one sharp (F#) and a common time signature (C). The middle and bottom staves are in bass clef. The music continues from the previous system. A large slur covers the first two measures, and another slur covers the last two measures. The notes are mostly quarter and eighth notes.

16

Handwritten musical notation for measures 16-17. The top staff is a treble clef with a key signature of one sharp (F#) and a common time signature (C). It contains two measures of music with eighth and sixteenth notes, some with accidentals. The middle and bottom staves are piano accompaniment with chords and single notes. A dashed line indicates a slur over the first measure of the top staff.

Handwritten musical notation for measures 18-19. The top staff is a treble clef with a key signature of one sharp (F#) and a common time signature (C). It contains two measures of music with eighth and sixteenth notes, some with accidentals. The middle and bottom staves are piano accompaniment with chords and single notes. A dashed line indicates a slur over the first measure of the top staff.

17

Handwritten musical notation for measures 20-21. The top staff is a treble clef with a key signature of one sharp (F#) and a common time signature (C). It contains two measures of music with eighth and sixteenth notes, some with accidentals. The middle and bottom staves are piano accompaniment with chords and single notes. A dashed line indicates a slur over the first measure of the top staff.

Handwritten text at the bottom of the page, possibly a signature or date.

Handwritten musical score for page 18. The score is written on a grand staff (treble and bass clefs). The piano accompaniment consists of chords and single notes, with a circled 'pp' marking. The vocal line is written in a soprano clef and includes a melodic line with various notes and rests. A circled number '18' is located in the top right corner.

sehr ruhig

Handwritten musical score for page 19. The score is written on a grand staff. The piano accompaniment features a rhythmic pattern of eighth notes with a circled 'pp' marking. The vocal line consists of a few notes in a soprano clef. A circled number '19' is located in the top right corner.

Handwritten musical score for page 20. The score is written on a grand staff. The piano accompaniment features a rhythmic pattern of eighth notes with a circled 'pp' marking. The vocal line consists of a few notes in a soprano clef. A circled number '20' is located in the top right corner.

Handwritten musical notation for the first system. The top staff is in treble clef with a key signature of one flat (B-flat). It contains two measures of music: the first measure has a quarter note B-flat, a quarter note D, and a quarter note F; the second measure has a quarter note B-flat. The piano accompaniment below consists of two staves. The first measure has two chords: a triad of B-flat, D, and F, and a triad of B-flat, D, and F with a sharp sign above the notes. The second measure has two chords: a triad of B-flat, D, and F with a sharp sign above the notes, and a triad of B-flat, D, and F with a sharp sign above the notes.

Handwritten musical notation for the second system. The top staff is in treble clef with a key signature of one flat (B-flat). It contains two measures of music: the first measure has a quarter note B-flat, a quarter note D, and a quarter note F; the second measure has a quarter note B-flat, a quarter note D, and a quarter note F. The piano accompaniment below consists of two staves. The first measure has two chords: a triad of B-flat, D, and F, and a triad of B-flat, D, and F with a sharp sign above the notes. The second measure has two chords: a triad of B-flat, D, and F with a sharp sign above the notes, and a triad of B-flat, D, and F with a sharp sign above the notes.

Handwritten musical notation for the third system. The top staff is in treble clef with a key signature of one flat (B-flat). It contains two measures of music: the first measure has a quarter note B-flat, a quarter note D, and a quarter note F; the second measure has a quarter note B-flat, a quarter note D, and a quarter note F. The piano accompaniment below consists of two staves. The first measure has two chords: a triad of B-flat, D, and F, and a triad of B-flat, D, and F with a sharp sign above the notes. The second measure has two chords: a triad of B-flat, D, and F with a sharp sign above the notes, and a triad of B-flat, D, and F with a sharp sign above the notes. A circled number "20" is written above the staff.

Handwritten musical notation for the fourth system. The top staff is in treble clef with a key signature of one flat (B-flat). It contains two measures of music: the first measure has a quarter note B-flat, a quarter note D, and a quarter note F; the second measure has a quarter note B-flat, a quarter note D, and a quarter note F. The piano accompaniment below consists of two staves. The first measure has two chords: a triad of B-flat, D, and F, and a triad of B-flat, D, and F with a sharp sign above the notes. The second measure has two chords: a triad of B-flat, D, and F with a sharp sign above the notes, and a triad of B-flat, D, and F with a sharp sign above the notes.

Handwritten musical notation for the first system. The top staff is a treble clef with notes: a quarter note 'd', a quarter note 'b', and a quarter note 'd'. The bottom staff is a piano staff with chords and a slur. The first measure contains a chord with notes G, A, B, C, D, E, F, G, and a slur over it. The second measure contains a chord with notes G, A, B, C, D, E, F, G, and a slur over it.

Handwritten musical notation for the second system. The top staff is a treble clef with notes: a quarter note 'b', a quarter note 'd', and a quarter note 'd'. The bottom staff is a piano staff with chords and a slur. The first measure contains a chord with notes G, A, B, C, D, E, F, G, and a slur over it. The second measure contains a chord with notes G, A, B, C, D, E, F, G, and a slur over it.

großes ait...

21

Handwritten musical notation for the third system. The top staff is a treble clef with notes: a quarter note 'a', a quarter note 'a', and a quarter note 'a'. The bottom staff is a piano staff with chords and a slur. The first measure contains a chord with notes G, A, B, C, D, E, F, G, and a slur over it. The second measure contains a chord with notes G, A, B, C, D, E, F, G, and a slur over it.

Handwritten musical notation on a grand staff. The upper staff contains a treble clef and a key signature of one sharp (F#). The lower staff contains a bass clef. The notation includes a series of notes with accidentals (sharps and flats) and rests. A bracket labeled "cluster" spans several notes in the upper staff. A circled "P" is written above the first few notes. A circled "P" is written below the first few notes. A circled "P" is written below the first few notes. A circled "P" is written below the first few notes.

Handwritten musical notation on a grand staff. The upper staff contains a treble clef and a key signature of one sharp (F#). The lower staff contains a bass clef. The notation includes a series of notes with accidentals (sharps and flats) and rests. A bracket labeled "cluster" spans several notes in the upper staff. A circled "P" is written above the first few notes. A circled "P" is written below the first few notes. A circled "P" is written below the first few notes. A circled "P" is written below the first few notes.

Handwritten musical notation on a grand staff. The upper staff contains a treble clef and a key signature of one sharp (F#). The lower staff contains a bass clef. The notation includes a series of notes with accidentals (sharps and flats) and rests. A bracket labeled "cluster" spans several notes in the upper staff. A circled "P" is written above the first few notes. A circled "P" is written below the first few notes. A circled "P" is written below the first few notes. A circled "P" is written below the first few notes.

Handwritten musical notation on a grand staff. The upper staff contains a treble clef and a key signature of one sharp (F#). The lower staff contains a bass clef. The notation includes a series of notes with accidentals (sharps and flats) and rests. A bracket labeled "cluster" spans several notes in the upper staff. A circled "P" is written above the first few notes. A circled "P" is written below the first few notes. A circled "P" is written below the first few notes. A circled "P" is written below the first few notes.

(schillernd VI =)

so schnell als möglich = (aber schön)

(auf 2. Schläge ad lib.)

Handwritten musical score for the first system. It features a treble clef, a key signature of one sharp (F#), and a 3/4 time signature. The music consists of a melody in the upper voice and a bass line in the lower voice. The melody is characterized by eighth-note patterns with slurs and accents. The bass line consists of quarter notes. There are some handwritten annotations above the staff, including '3' and 'H'.

Handwritten musical score for the second system, continuing the melody and bass line from the first system. The notation is consistent with the first system, showing eighth-note patterns in the upper voice and quarter notes in the lower voice.

Handwritten musical score for the third system, continuing the melody and bass line. The notation remains consistent, with eighth-note patterns in the upper voice and quarter notes in the lower voice.

(23) (24)

Handwritten musical score for three staves. The top staff has a treble clef and a key signature of one flat. It contains four measures of music with eighth notes and rests. The middle staff has a treble clef and contains four measures of music with eighth notes and rests. The bottom staff has a bass clef and contains two whole notes. There are some handwritten annotations above the notes in the top two staves.

=DE (note ein Choral)

Handwritten musical score for three staves. The top staff has a treble clef and a key signature of one flat. It contains two measures of music with quarter notes and rests. The middle staff has a treble clef and a key signature of one flat. It contains four measures of music with eighth notes and rests. The bottom staff has a bass clef and contains two whole notes. There are some handwritten annotations above the notes in the top two staves.

Handwritten musical score for three staves. The top staff has a treble clef and a key signature of one flat. It contains two measures of music with quarter notes and rests. The middle staff has a treble clef and a key signature of one flat. It contains four measures of music with eighth notes and rests. The bottom staff has a bass clef and contains two whole notes. There are some handwritten annotations above the notes in the top two staves.

Handwritten musical notation at the top of the page, possibly a title or system number.

Handwritten musical notation on a single staff, featuring several chords and notes.

Handwritten musical notation on a single staff, featuring a melodic line with various accidentals and a fermata.

Handwritten musical notation at the top of the second system.

Handwritten musical notation on a single staff, featuring several chords and notes.

Handwritten musical notation on a single staff, featuring a melodic line with various accidentals and a fermata.

Handwritten musical notation at the top of the third system.

(2. x yr. Mi.) (25) (26)

Handwritten musical notation on a single staff, featuring several chords and notes.

Handwritten musical notation on a single staff, featuring a melodic line with various accidentals and a fermata.

Handwritten title: *Handwritten text*

Handwritten musical notation for the first system. It features a treble clef staff with a guitar-like staff below it, showing fret numbers (5, 7) and various notes. A bass clef staff is also present below the guitar staff.

Handwritten musical notation for the second system. It features a treble clef staff with a guitar-like staff below it, showing fret numbers and various notes. A bass clef staff is also present below the guitar staff.

Handwritten musical notation for the third system. It features a treble clef staff with a guitar-like staff below it, showing fret numbers and various notes. A bass clef staff is also present below the guitar staff.

Handwritten musical notation on a single staff, featuring a complex melodic line with many notes and some accidentals.

Handwritten musical notation on a single staff, showing a chord with a sharp sign and a '4' below it.

nicht ablassen!

Handwritten musical score for two staves. The top staff has a melodic line with slurs and accents. The bottom staff has a bass line with chords and a '4' below it.

Handwritten musical score for two staves. The top staff has a melodic line with slurs and accents. The bottom staff has a bass line with chords and a '4' below it.

Handwritten musical score system 1, consisting of three staves. The top staff is a treble clef with a key signature of one flat (B-flat) and a common time signature. It contains a melodic line with eighth and sixteenth notes, some beamed together, and slurs. The middle staff is a bass clef with a key signature of one flat and a common time signature, containing a bass line with quarter and eighth notes. The bottom staff is a bass clef with a key signature of one flat and a common time signature, containing a bass line with quarter and eighth notes. The system is divided into three measures by vertical bar lines.

Handwritten musical score system 2, consisting of three staves. The top staff is a treble clef with a key signature of one flat and a common time signature. It contains a melodic line with eighth and sixteenth notes, some beamed together, and slurs. The middle staff is a bass clef with a key signature of one flat and a common time signature, containing a bass line with quarter and eighth notes. The bottom staff is a bass clef with a key signature of one flat and a common time signature, containing a bass line with quarter and eighth notes. The system is divided into three measures by vertical bar lines.

Handwritten musical score system 3, consisting of three staves. The top staff is a treble clef with a key signature of one flat and a common time signature. It contains a melodic line with eighth and sixteenth notes, some beamed together, and slurs. The middle staff is a bass clef with a key signature of one flat and a common time signature, containing a bass line with quarter and eighth notes. The bottom staff is a bass clef with a key signature of one flat and a common time signature, containing a bass line with quarter and eighth notes. The system is divided into three measures by vertical bar lines.

Handwritten signature or name in the bottom right corner, possibly reading "Luigi..."