

3 Teile für
Klausur Solo
1968

Adolf Schenk

Notenheft



3 Teile für
Klavier Solo

1968

Adolf Scherbaum

Teil ①

Allegro con brio
naut

Handwritten musical notation for the first system. The treble clef is on the top staff, and the bass clef is on the bottom staff. The time signature is 3/2. The key signature has one sharp (F#). The notation includes a melodic line with slurs and accents, and a bass line with chords and accidentals.

Handwritten musical notation for the second system. The treble clef is on the top staff, and the bass clef is on the bottom staff. The notation continues the melodic and harmonic development from the first system.

Handwritten musical notation for the third system. The treble clef is on the top staff, and the bass clef is on the bottom staff. The notation shows further melodic and harmonic progression.

Handwritten musical notation for the fourth system. The treble clef is on the top staff, and the bass clef is on the bottom staff. The notation concludes the piece with final melodic and harmonic elements.



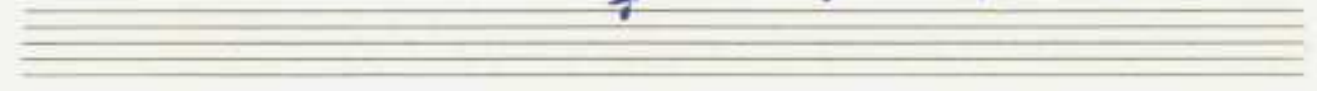
Handwritten musical notation for the first system. The upper staff is in treble clef with a circled sharp sign (#) and contains three measures of quarter notes with accents. The lower staff is in bass clef and contains a sequence of chords with accidentals and slurs.



Handwritten musical notation for the second system. The upper staff is in treble clef and contains three measures of quarter notes with accents. The lower staff is in bass clef and contains a sequence of chords with accidentals and slurs.



Handwritten musical notation for the third system. The upper staff is in treble clef and contains six measures of quarter notes with accents and slurs. The lower staff is in bass clef and contains a sequence of chords with accidentals and slurs.



Handwritten musical notation for the fourth system. The upper staff is in treble clef and contains a long note with a slur and a dynamic marking 'p'. The lower staff is in bass clef and contains a sequence of chords with accidentals and slurs.

Handwritten musical notation for the first system. It features two staves. The top staff is in treble clef with a 2/2 time signature and contains a melodic line with slurs and accents. The bottom staff is in bass clef with a 2/2 time signature and contains a bass line with slurs and accents. A circled 'p' dynamic marking is present in the first measure of the bass staff, with an arrow pointing to the first note.

Handwritten musical notation for the second system. The top staff is in treble clef and contains a series of notes with accents (^) above them. The bottom staff is in bass clef and contains a bass line with slurs and accents. A circled 'p' dynamic marking is present in the final measure of the top staff.

Handwritten musical notation for the third system. It features two staves. The top staff is in treble clef with a 3/2 time signature and contains a melodic line with slurs and accents. The bottom staff is in bass clef with a 2/2 time signature and contains a bass line with slurs and accents. A circled 'p' dynamic marking is present in the first measure of the top staff.

Handwritten musical notation for the fourth system. It features two staves. The top staff is in treble clef with a 3/2 time signature and contains a melodic line with slurs and accents. The bottom staff is in bass clef with a 2/2 time signature and contains a bass line with slurs and accents. A circled 'p' dynamic marking is present in the first measure of the top staff.

Handwritten musical notation for the first system. The treble clef staff contains notes with accidentals: \sharp , \flat , \flat , \sharp , \flat , \flat , \sharp , \flat . The bass clef staff contains notes with accidentals: \sharp , \flat , \flat , \sharp , \flat , \flat , \sharp , \flat . A circled \sharp is written below the bass clef staff. The time signature is $2/2$.

Handwritten musical notation for the second system. The treble clef staff contains notes with accidentals: \sharp , \sharp , \flat , \sharp , \flat , \flat , \sharp , \flat . The bass clef staff contains notes with accidentals: \sharp , \sharp , \flat , \sharp , \flat , \flat , \sharp , \flat . The time signature is $2/2$.

Handwritten musical notation for the third system. The treble clef staff contains notes with accidentals: \flat , \flat , \flat , \flat , \flat , \flat , \flat , \flat . The bass clef staff contains notes with accidentals: \flat , \flat , \flat , \flat , \flat , \flat , \flat , \flat . A circled p is written below the bass clef staff. The time signature is $2/2$.

Handwritten musical notation for the fourth system. The treble clef staff contains notes with accidentals: \flat , \flat , \flat , \flat , \flat , \flat , \flat , \flat . The bass clef staff contains notes with accidentals: \flat , \flat , \flat , \flat , \flat , \flat , \flat , \flat . A circled pp is written below the bass clef staff. The time signature is $2/2$.

Handwritten musical notation for the first system. The right hand (RH) starts with a circled **pp** dynamic marking and the instruction " sempre cresc." with an arrow pointing to the first measure. The RH contains a melodic line with a sharp sign and a fermata. The left hand (LH) contains a bass line with a sharp sign and a fermata, followed by notes with flats and a fermata.

Handwritten musical notation for the second system. The RH contains a melodic line with a fermata. The LH contains a bass line with a sharp sign and a fermata, followed by notes with flats and a fermata.

Handwritten musical notation for the third system. The RH starts with a circled **f** dynamic marking and contains a melodic line with a fermata. The LH contains a bass line with a sharp sign and a fermata, followed by notes with flats and a fermata.

Handwritten musical notation for the fourth system. The RH starts with a circled **f** dynamic marking and contains a melodic line with a fermata. The LH contains a bass line with a sharp sign and a fermata, followed by notes with flats and a fermata.

(bei 1:1) OKTAVE DIS

Sehr langsam

Handwritten musical notation for the first system. The treble clef staff contains a series of notes: a whole note chord (F#, G, A, B), followed by quarter notes (B, A, G, F), and a final whole note chord (F, G, A, B). The bass clef staff contains a whole note chord (F#, G, A, B) and a whole note chord (F, G, A, B). A circled 'pp' is written above the first measure. A large slur covers the entire system.

Handwritten musical notation for the second system. The treble clef staff contains quarter notes (B, A, G, F), followed by quarter notes (F#, G, A, B), and a final quarter note (B). The bass clef staff contains a whole note chord (F#, G, A, B) and a whole note chord (F, G, A, B). A large slur covers the entire system.

Handwritten musical notation for the third system. The treble clef staff contains a whole note chord (F#, G, A, B) and a whole note chord (F, G, A, B). The bass clef staff contains a whole note chord (F#, G, A, B) and a whole note chord (F, G, A, B). A circled 'pp' is written above the first measure. A large slur covers the entire system.

Handwritten musical notation for the fourth system. The treble clef staff contains quarter notes (B, A, G, F), followed by quarter notes (F#, G, A, B), and a final quarter note (B). The bass clef staff contains a whole note chord (F#, G, A, B) and a whole note chord (F, G, A, B). A large slur covers the entire system.

Handwritten musical notation for the first system. The treble clef staff contains notes with accidentals: F#4, G4, A4, Bb4, C5, D5, E5, F#5, G5. The bass clef staff contains notes with accidentals: Bb3, C4, D4, E4, F#4, G4. Dynamic markings include 'f' and '>' (accents). A large slur covers the first two measures of both staves.

Handwritten musical notation for the second system. The treble clef staff has a whole note G4 with a sharp sign and a dynamic marking of 'pp'. The bass clef staff has a whole note F#4 with a sharp sign. A slur is present above the treble staff.

Handwritten musical notation for the third system. The treble clef staff shows chords: G4-Bb4, G4-A4, G4-Bb4, G4-A4. The bass clef staff shows notes: F#4, G4, A4, Bb4. A large bracketed annotation '(26 + rit. - - -)' spans the bottom of the system. To the right, there is a handwritten note: 'D.C. al fine'.

CODA (made excel.)

Handwritten musical notation for the CODA section. It consists of two staves. The top staff is in treble clef with a key signature of one sharp (F#) and a 2/2 time signature. The bottom staff is in bass clef. The notation includes several measures with notes and rests, and a final measure with a double bar line. There are some handwritten annotations like 'hart.' and '2/2'.

A large, dense scribble of handwritten lines covering several staves, likely representing a heavily edited or obscured section of the manuscript.

Handwritten musical notation for a section of the piece. It consists of two staves. The top staff is in treble clef and the bottom staff is in bass clef. The notation includes several measures with notes and rests, and a final measure with a double bar line.

Handwritten musical notation on a five-line staff. The notation includes various symbols such as vertical lines, circles, and a large bracket-like structure. There are also some illegible handwritten characters and symbols.

Teil II.

Langsam

3/2 pp

pp

f

Handwritten musical notation for the first system. The treble clef is on the left. The key signature consists of two flats (Bb and Eb). The first measure contains a half note Bb and a half note Eb, both with slurs above them. The second measure contains a half note Bb and a half note Eb, also with slurs above them. There are additional markings: a circled 'P' in the first measure, and 'rit' and 'pp' markings in the second measure. The bass clef part shows a whole note Bb in the first measure and a whole note Eb in the second measure.

Handwritten musical notation for the second system. The treble clef is on the left. The key signature consists of two sharps (F# and C#). The first measure contains a half note F# and a half note C#, both with slurs above them. The second measure contains a half note F# and a half note C#, also with slurs above them. There are additional markings: a circled 'F#' in the first measure, and 'rit' and 'pp' markings in the second measure. The bass clef part shows a whole note F# in the first measure and a whole note C# in the second measure.

Handwritten musical notation for the third system. The treble clef is on the left. The key signature consists of two sharps (F# and C#). The first measure contains a half note F# and a half note C#, both with slurs above them. The second measure contains a half note F# and a half note C#, also with slurs above them. There are additional markings: a circled 'F#' in the first measure, and 'rit' and 'pp' markings in the second measure. The bass clef part shows a whole note F# in the first measure and a whole note C# in the second measure.

so ruhig als möglich (relaxiert)

Handwritten musical notation for the first system, featuring a treble clef, a circled 'p' dynamic marking, and a slur over a series of notes. The lower staff contains notes in the bass clef.

Handwritten musical notation for the second system, featuring a treble clef and a slur over a series of notes. The lower staff contains notes in the bass clef.

Handwritten musical notation for the third system, featuring a treble clef and a slur over a series of notes. The lower staff contains notes in the bass clef.

ppp

pp =

rit

(2te + 3te rit) mal chin ->

D.C.

Handwritten musical notation on a grand staff. The notation includes a treble clef, a key signature of one sharp (F#), and a common time signature (C). The word "lunga" is written above the staff. The notation features a series of notes, a sharp sign, and a large, stylized scribble that resembles a long, curved line or a large note. Below the staff, there are several vertical lines and a circled symbol.



Teil III

Precitissimo

Handwritten musical notation for the first system. It features a treble clef on the left. The time signature is 4/4. A circled 'pp' dynamic marking is present, with the handwritten instruction 'pmpae < cresc.' written below it. The right hand has a whole rest. The left hand plays a sequence of chords: F#4, F#3, F#2, Bb3, Bb2, Bb1, F#4, F#3, F#2, Bb3, Bb2, Bb1.

Handwritten musical notation for the second system. The right hand has a whole rest. The left hand continues the chord sequence from the first system. At the end of the system, there is a fermata over a chord consisting of F#4, F#3, and F#2, with a '>pp' dynamic marking above it.

Handwritten musical notation for the third system. The right hand has a whole rest. The left hand continues the chord sequence. At the end of the system, there is a fermata over a chord consisting of F#4, F#3, and F#2, with a '>pp' dynamic marking above it. A 'mf' dynamic marking is written in the right hand area.

heart

hart (wild)

Block A

Bl. A

Bl. A

Bl. A

Bl. A

Bl. A

Bl. A

Bl. A

Bl. A

Bl. A

Bl. A

Handwritten musical notation for the first system. The top staff is a treble clef with a whole note and a wavy line. The bottom staff is a bass clef with four chords: F#m, Gm, Am, and Bbm. Brackets under the bottom staff are labeled "BL.A." under the first chord, and "BL.A" under the last two chords.

Handwritten musical notation for the second system. The top staff is a treble clef with four measures of notes: #d, b, d, b. The bottom staff is a bass clef with four measures of notes: #g, #, #g, #. Brackets under the bottom staff are labeled "BL.A" under the first two measures and "BL.A" under the last two measures.

Handwritten musical notation for the third system. The top staff is a treble clef with four measures of notes: #d, #, #d, #. The bottom staff is a bass clef with four measures of notes: #g, #, #g, #. Brackets under the bottom staff are labeled "BL.A." under the first two measures and "BL.A" under the last two measures. The word "Gliss" is written above the notes in the second and fourth measures.

CODA

Adelb. Langsam

6/4 ppp

5:

B4 C5 B4 A4

pp=

Handwritten musical score for the first system. The top staff is in treble clef and the bottom staff is in bass clef. The music begins with a treble clef, a key signature of one flat (B-flat), and a common time signature. The first measure contains a quarter note B-flat, followed by a quarter note A, and a quarter note G with an accent (^). The second measure contains a quarter note F with an accent (^) and a dynamic marking of *f*. A double bar line follows. The third measure contains a quarter note G with a sharp (#) and a dynamic marking of *f*. The fourth measure contains a quarter note A with a sharp (#) and a dynamic marking of *f*. The fifth measure contains a quarter note B-flat with a sharp (#) and a dynamic marking of *f*. The sixth measure contains a quarter note C with a sharp (#) and a dynamic marking of *f*. The system ends with a double bar line.

Handwritten musical score for the second system. The top staff is in treble clef and the bottom staff is in bass clef. The system begins with a circled key signature change to two sharps (F# and C#). The word "pesante" is written below the treble staff. The music consists of a series of chords in the bass staff and corresponding notes in the treble staff. The chords are: F#-C# (quarter), F#-C# (quarter), F#-C# (quarter), F#-C# (quarter), F#-C# (quarter), F#-C# (quarter), F#-C# (quarter), F#-C# (quarter), F#-C# (quarter), F#-C# (quarter). The system ends with a double bar line.

Handwritten musical score for the third system. The top staff is in treble clef and the bottom staff is in bass clef. The system begins with a dynamic marking of *pp*. The music consists of a melodic line in the treble staff and chords in the bass staff. The chords are: F#-C# (quarter), F#-C# (quarter), F#-C# (quarter), F#-C# (quarter), F#-C# (quarter), F#-C# (quarter), F#-C# (quarter), F#-C# (quarter), F#-C# (quarter), F#-C# (quarter). The system ends with a double bar line.

Handwritten musical notation for the first system, featuring treble and bass clefs, a *ppp* dynamic marking, and various notes and accidentals.

Handwritten musical notation for the second system, including treble and bass clefs, notes, and accidentals.

Handwritten musical notation for the third system, including a *pedal* marking, a large slur, and a section of notes with the annotation "in Seiten frei".

ritard
Teil III. ad
Coda

COPR

moder (accel)

Handwritten musical notation for the first system. The treble clef staff contains a melodic line with notes and accents. The bass clef staff contains a bass line with notes and slurs. The system concludes with a double bar line.

Handwritten musical notation for the second system. The grand staff shows the treble and bass clefs. The treble staff has notes with accents, and the bass staff has notes with slurs and a double bar line.

Handwritten musical notation for the third system. The grand staff shows the treble and bass clefs. The treble staff has notes with accents, and the bass staff has notes with slurs and a double bar line.

Handwritten musical score for the first system. It consists of three staves. The top staff is in treble clef, the middle in bass clef, and the bottom in treble clef. The key signature is three sharps (F#, C#, G#). The notation includes notes, rests, and dynamic markings such as mf and f . There are also some handwritten annotations and a large bracket spanning the first two staves.

Handwritten musical score for the second system. It consists of three staves. The top staff is in treble clef, the middle in bass clef, and the bottom in treble clef. The key signature is three sharps (F#, C#, G#). The notation includes notes, rests, and dynamic markings such as mf and f . There are also some handwritten annotations and a large bracket spanning the first two staves.

großes gut.

1968 Ring
Adolf Scherbaum