

3 Teile für
Klavier Solo
1968

Adolf Scherbaum

Notenheft



3 Teile für
Klavier Solo

1968

Adolf Scherbaum

Handwritten musical notation for the first system. The treble clef staff contains a circled sharp sign (#) and three notes with accents (^) above them. The bass clef staff contains a circled sharp sign (#) and a series of notes with a slur above them. The system is divided into two measures by a vertical bar line.

Handwritten musical notation for the second system. The treble clef staff contains three notes with accents (^) above them. The bass clef staff contains a series of notes with a slur above them. The system is divided into two measures by a vertical bar line.

Handwritten musical notation for the third system. The treble clef staff contains a circled sharp sign (#) and three notes with accents (^) above them. The bass clef staff contains a circled sharp sign (#) and a series of notes with a slur above them. The system is divided into two measures by a vertical bar line.

Handwritten musical notation for the fourth system. The treble clef staff contains a circled sharp sign (#) and a series of notes with a slur above them. The bass clef staff contains a circled sharp sign (#) and a series of notes with a slur above them. The system is divided into two measures by a vertical bar line.

Handwritten musical score for the first system. It consists of two staves. The top staff is in treble clef with a 2/2 time signature. It contains three measures of music with notes G, B \flat , G, B \flat , G, B \flat , G, B \flat , G, B \flat , G, B \flat , G, B \flat . The bottom staff is in bass clef with a 2/2 time signature and contains three measures of music with notes B \flat , G, B \flat , G, B \flat , G, B \flat , G, B \flat , G, B \flat , G, B \flat . A circled 'p' with an arrow points to the first measure of the bass staff, and the word 'cresc.' is written next to it.

Handwritten musical score for the second system. It consists of two staves. The top staff is in treble clef and contains three measures of music with notes G, B \flat , G, B \flat , G, B \flat , G, B \flat , G, B \flat , G, B \flat , G, B \flat . The bottom staff is in bass clef and contains three measures of music with notes B \flat , G, B \flat , G, B \flat , G, B \flat , G, B \flat , G, B \flat , G, B \flat . A circled 'p' is at the end of the second measure of the top staff, and 'mf' is written above the third measure of the top staff.

Handwritten musical score for the third system. It consists of two staves. The top staff is in treble clef with a 3/2 time signature. It contains three measures of music with notes G, B \flat , G, B \flat , G, B \flat , G, B \flat , G, B \flat , G, B \flat , G, B \flat . The bottom staff is in bass clef with a 3/2 time signature and contains three measures of music with notes B \flat , G, B \flat , G, B \flat , G, B \flat , G, B \flat , G, B \flat , G, B \flat . A circled 'p' is at the end of the second measure of the top staff.

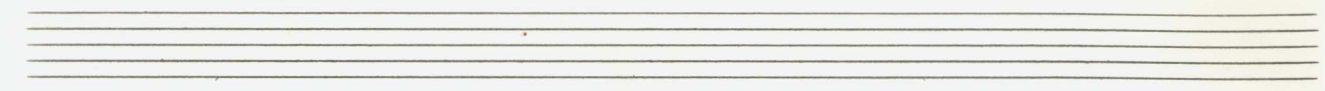
Handwritten musical score for the fourth system. It consists of two staves. The top staff is in treble clef with a 3/2 time signature. It contains three measures of music with notes G, B \flat , G, B \flat , G, B \flat , G, B \flat , G, B \flat , G, B \flat , G, B \flat . The bottom staff is in bass clef with a 3/2 time signature and contains three measures of music with notes B \flat , G, B \flat , G, B \flat , G, B \flat , G, B \flat , G, B \flat , G, B \flat . A circled 'p' is at the end of the second measure of the top staff.

Handwritten musical notation for the first system. It consists of two staves. The upper staff is in treble clef with a key signature of one sharp (F#) and a 2/2 time signature. It contains five measures of music with various notes and accidentals, including a circled sharp sign (#) in the first measure. The lower staff is in bass clef and contains five measures of music, primarily consisting of chords and rests.

Handwritten musical notation for the second system, consisting of two staves. The upper staff is in treble clef and the lower staff is in bass clef. Both staves contain five measures of music with notes, accidentals, and rests.

Handwritten musical notation for the third system, consisting of two staves. The upper staff is in treble clef and the lower staff is in bass clef. The system features a long melodic line in the upper staff and chords in the lower staff, with a circled 'a' in the second measure of the upper staff.

Handwritten musical notation for the fourth system, consisting of two staves. The upper staff is in treble clef and the lower staff is in bass clef. The system includes a circled 'a' in the first measure of the upper staff and a circled 'c' in the first measure of the lower staff. The notation includes notes, accidentals, and rests.



Handwritten musical notation for the first system. The right hand (RH) starts with a circled *pp* dynamic and the instruction "sempre cresc." with an arrow pointing to the right. The RH melody consists of quarter notes: G4 (with a sharp sign), A4, B4, C5, followed by rests. The left hand (LH) accompaniment consists of chords: G4 (with a sharp sign), F4 (with a flat sign), G4, and F4 (with a flat sign). Each chord is marked with a wedge-shaped accent.

Handwritten musical notation for the second system. The RH starts with a circled *mf* dynamic. The RH melody consists of quarter notes: G4 (with a flat sign), A4, B4, C5, followed by rests. The LH accompaniment consists of chords: G4 (with a sharp sign), F4 (with a flat sign), G4, and F4 (with a flat sign). Each chord is marked with a wedge-shaped accent.

Handwritten musical notation for the third system. The RH starts with a circled *f* dynamic. The RH melody consists of quarter notes: G4 (with a flat sign), A4, B4, C5, followed by rests. The LH accompaniment consists of chords: G4 (with a sharp sign), F4 (with a flat sign), G4, and F4 (with a flat sign). Each chord is marked with a wedge-shaped accent.

Handwritten musical notation for the fourth system. The RH starts with a circled *f* dynamic. The RH melody consists of quarter notes: G4 (with a flat sign), A4, B4, C5, followed by rests. The LH accompaniment consists of chords: G4 (with a sharp sign), F4 (with a flat sign), G4, and F4 (with a flat sign). Each chord is marked with a wedge-shaped accent.

6

(bei ||:||) OKTAVE BIS ϕ

Handwritten musical notation for the first system. The treble staff contains notes with accidentals (sharps and naturals) and a circled cross symbol. The bass staff contains notes with accidentals and a circled sharp symbol. A bracket spans across both staves, and a circled cross symbol is present below the bass staff.

Handwritten musical notation for the second system. The treble staff contains notes with accidentals and a circled cross symbol labeled "CODA". The bass staff contains notes with accidentals. A circled cross symbol is also present below the bass staff.

Handwritten musical notation for the third system. The treble staff contains notes with accidentals and a circled cross symbol. A box labeled "Cluster" is drawn below the bass staff, spanning across several measures.

Handwritten musical notation for the fourth system. The treble staff contains notes with accidentals and a circled cross symbol. The bass staff contains notes with accidentals and a circled cross symbol labeled "ppp". A circled cross symbol is also present below the bass staff.

sehr langsam

Handwritten musical notation for the first system. The treble clef staff begins with a circled 'pp' dynamic marking. The time signature is 4/8. The bass clef staff has a key signature of one sharp (F#) and a circled 'p' dynamic marking. The system contains four measures of music with various note values and rests, all under a long slur.

Handwritten musical notation for the second system. The treble clef staff contains four measures of music with notes and rests, under a long slur. The bass clef staff has a key signature of one flat (Bb) and a circled 'p' dynamic marking. The system contains four measures of music with various note values and rests, all under a long slur.

Handwritten musical notation for the third system. The treble clef staff begins with a circled 'pp' dynamic marking. The bass clef staff has a circled 'p' dynamic marking. The system contains four measures of music with various note values and rests, all under a long slur.

Handwritten musical notation for the fourth system. The treble clef staff contains four measures of music with notes and rests, under a long slur. The bass clef staff has a key signature of one sharp (F#) and a circled 'p' dynamic marking. The system contains four measures of music with various note values and rests, all under a long slur.

Handwritten musical notation for the first system. The treble staff contains a melodic line with notes G4 (sharp), A4 (flat), B4, and C5 (sharp), with dynamic markings *f* and accents. The bass staff contains a bass line with notes G3 (flat), F3 (flat), and E3 (sharp), with dynamic markings *f* and accents. A large slur covers both staves across the first two measures. The third measure has a treble staff note G4 (flat) and a bass staff note G3 (flat). The fourth measure has a treble staff note G4 (flat) and a bass staff note G3 (flat).

Handwritten musical notation for the second system. The treble staff begins with a wavy line, followed by a quarter note G4 (flat) with a dynamic marking of *ppp*. The bass staff has a whole rest in the first measure, followed by notes G3 (sharp), F3 (flat), and E3 (flat) in the second measure. The third measure has a treble staff note G4 (sharp) and a bass staff whole rest. The system ends with a double bar line.

Handwritten musical notation for the third system. The treble staff contains chords: G4 (flat) and A4 (flat) in the first measure; G4 (flat), A4 (flat), and B4 (flat) in the second measure; G4 (flat) and A4 (flat) in the third measure; and G4 (flat) and A4 (flat) in the fourth measure. The bass staff contains notes: G3 (sharp) and F3 (flat) in the first measure; G3 (flat) and F3 (flat) in the second measure; G3 (flat) and F3 (flat) in the third measure; and G3 (flat) and F3 (flat) in the fourth measure. A large slur covers both staves across all four measures. Below the bass staff, there is a handwritten note: "(26 + rück - - - -)". To the right of the system, there are handwritten markings: "D.C.", "al", and "CODA".

CODA (modo accel.)

Handwritten musical notation for the CODA section. It features a treble and bass clef with a key signature of one sharp (F#). The time signature is 2/2. The notation includes a 'b art.' marking, a 2/2 time signature, and several measures of music with notes and rests. The bass line has notes with accents and a fermata over the final measure.

A large, dense scribble of blue ink covering several staves of music, likely representing a section that has been heavily revised or is a placeholder.

Handwritten musical notation for a section of the piece. It features a treble and bass clef with a key signature of one sharp (F#). The notation includes several measures of music with notes and rests. The bass line has notes with accents and a fermata over the final measure.

Handwritten musical notation on a five-line staff. The notation includes various symbols such as vertical lines, circles, and groups of vertical strokes. A circled symbol with a sharp sign is prominent in the middle. There are also some scribbles and a large curved line at the end of the staff.

Teil II.

langsam

3/2 pp

pp

mf

Handwritten musical notation for the first system. The treble clef staff contains notes with accidentals (two flats) and a slur. The bass clef staff contains a bass line with a flat and a circled 'p' dynamic marking. Handwritten annotations include 'rit' and '>pp'.

Handwritten musical notation for the second system. The treble clef staff has a circled 'ff' dynamic marking and notes with slurs. The bass clef staff has notes with slurs and a circled 'ff' dynamic marking. Handwritten annotation 'breit' is present.

Handwritten musical notation for the third system. The treble clef staff has notes with slurs and a circled 'ff' dynamic marking. The bass clef staff has notes with slurs and a circled 'ff' dynamic marking. Handwritten annotation '> du' is present.

so ruhig als möglich (solo part)

Handwritten musical notation for the first system. The treble clef is on the left. A circled 'p' indicates piano. The melody consists of two measures. The first measure contains a sequence of notes: G#4, A4, Bb4, C#5, D5, Eb5, F#5, G#5. The second measure contains: A5, Bb5, C#6, D6, E6. A fermata is placed over the final note. The bass clef part below shows two measures: the first has G#3, A3, and a whole rest; the second has G#3, A3, Bb3, and a whole rest.

Handwritten musical notation for the second system. The treble clef is on the left. The melody consists of two measures. The first measure contains: G#4, A4, Bb4, C#5, D5, Eb5, F#5, G#5. The second measure contains: A5, Bb5, C#6, D6, E6. A fermata is placed over the final note. The bass clef part below shows two measures: the first has a whole rest; the second has G#3, A3, and Bb3, each with a whole rest.

Handwritten musical notation for the third system. The treble clef is on the left. The melody consists of two measures. The first measure contains: G#4, A4, Bb4, C#5, D5, Eb5, F#5, G#5. The second measure contains: A5, Bb5, C#6, D6, E6. A fermata is placed over the final note. The bass clef part below shows two measures: the first has G#3, A3, Bb3, and a whole rest; the second has a circled 'gr.' marking and the text 'für ~' written next to it.

Handwritten musical notation for the first system. The treble clef contains notes with accidentals (sharps and naturals). The bass clef contains chords with accidentals and some rhythmic markings. The dynamic marking *ppp* is written in the first measure.

Handwritten musical notation for the second system. It continues the melodic and harmonic material from the first system, with similar note values and chord structures.

Handwritten musical notation for the third system. It includes a dynamic marking *pp =* and a *rit* (ritardando) marking. A large bracketed annotation at the bottom reads:
 (2te + 3te rit)
 mal ohne →

Handwritten musical notation on a page of ten staves. The notation is written in blue ink. The first staff contains a treble clef, a key signature of one sharp (F#), and a common time signature (C). The word "piano" is written below the first staff. The word "lunga" is written above the second staff. The notation includes several notes, a sharp sign, and a large, sweeping curve that spans across the second and third staves. Below the third staff, there are several vertical lines, possibly representing a chord or a specific fingering. The remaining staves are empty.

A page of ten blank musical staves. The staves are arranged vertically. There are some very faint, light-colored handwritten markings and notes scattered across the page, particularly in the upper half. The paper appears aged and slightly yellowed.

Teil III

Prestissimo

Handwritten musical notation for the first system. It features a treble clef on the left and a 4/4 time signature. A circled 'pp' dynamic marking is present, with the handwritten text 'pmpse <' and 'avere.' written below it. The notation includes a series of chords in the right hand and a single note in the left hand, with various accidentals (sharps and flats) and a fermata over the final measure.

Handwritten musical notation for the second system. It features a treble clef on the left. The notation includes a series of chords in the right hand and a single note in the left hand, with various accidentals (sharps and flats) and a fermata over the final measure. A circled 'pp' dynamic marking is present above the right hand.

Handwritten musical notation for the third system. It features a treble clef on the left. The notation includes a series of chords in the right hand and a single note in the left hand, with various accidentals (sharps and flats) and a fermata over the final measure. A circled 'pp' dynamic marking is present above the right hand, and a circled 'mf' dynamic marking is present above the left hand.

heart)

Handwritten musical notation for the first system. The treble clef staff contains two measures of music. The first measure has notes G4, A4, B4, C5, B4, A4, G4. The second measure has notes G4, A4, B4, C5, B4, A4, G4. The bass clef staff contains two measures of music. The first measure has notes F#3, G#3, A3, B3, A3, G#3, F#3. The second measure has notes F#3, G#3, A3, B3, A3, G#3, F#3. A brace connects the two staves. A circled 'III' is written in the right margin.

Handwritten musical notation for the second system. The treble clef staff contains two measures of music. The first measure has notes G4, A4, B4, C5, B4, A4, G4. The second measure has notes G4, A4, B4, C5, B4, A4, G4. The bass clef staff contains two measures of music. The first measure has notes F#3, G#3, A3, B3, A3, G#3, F#3. The second measure has notes F#3, G#3, A3, B3, A3, G#3, F#3. A brace connects the two staves.

Handwritten musical notation for the third system. The treble clef staff contains two measures of music. The first measure has notes G4, A4, B4, C5, B4, A4, G4. The second measure has notes G4, A4, B4, C5, B4, A4, G4. The bass clef staff contains two measures of music. The first measure has notes F#3, G#3, A3, B3, A3, G#3, F#3. The second measure has notes F#3, G#3, A3, B3, A3, G#3, F#3. A brace connects the two staves.

heart (wild)

Block (A)
Bl. A Bl. A

Bl. A Bl. A Bl. A Bl. A

Bl. A Bl. A Bl. A Bl. A

Handwritten musical notation for the first system. The right hand has a treble clef and a whole note chord. The left hand has a bass clef and a series of chords. Brackets under the left hand are labeled "Bl.A.". The right hand has some scribbled notes.

Handwritten musical notation for the second system. The right hand has a treble clef and a series of chords. The left hand has a bass clef and a series of chords. Brackets under the left hand are labeled "Bl.A.".

Handwritten musical notation for the third system. The right hand has a treble clef and a series of chords. The left hand has a bass clef and a series of chords. Brackets under the left hand are labeled "Bl.A.". The word "Gliss" is written above the right hand notes.

COPRA

Handwritten musical notation for the first system. It features a treble clef with a key signature of one flat (B-flat). The melody consists of a series of chords: B-flat major, A-flat major, G-flat major, F major, E-flat major, D-flat major, C major, and B-flat major. A large slur covers the entire phrase. The bass line has a treble clef with a key signature of three sharps (F#, C#, G#) and contains rhythmic markings: a quarter note, a quarter rest, a quarter note, and a quarter note. The word "du" is written below the final chord.

Handwritten musical notation for the second system. It features a treble clef with a key signature of one flat (B-flat). The melody consists of a series of chords: B-flat major, A-flat major, G-flat major, F major, E-flat major, D-flat major, C major, and B-flat major. A large slur covers the entire phrase. The bass line has a bass clef and contains a whole note chord B-flat major.

Handwritten musical notation for the third system. It features a treble clef with a key signature of one flat (B-flat). The melody consists of a series of chords: B-flat major, A-flat major, G-flat major, F major, E-flat major, D-flat major, C major, and B-flat major. A large slur covers the entire phrase. The word "gutes mit dir" is written above the melody. The word "du" is written below the final chord. The bass line has a treble clef with a key signature of one flat (B-flat) and contains rhythmic markings: a quarter note, a quarter rest, a quarter note, and a quarter note. The word "pp" is written below the first two measures, and "ppp" is written below the last measure.

Adolf Scherbaum

Handwritten musical notation for the first system. It features a treble clef, a circled '5', a 6/4 time signature, and 'ppp' dynamics. The melody consists of two measures: the first has notes G#4, A4, B4, C5 with a slur; the second has notes D5, E5, F#5, G5 with a slur. Below the staff are two chord diagrams: the first is a triad of G#4, A4, B4; the second is a triad of D5, E5, F#5.

Handwritten musical notation for the second system. The melody has two measures: the first has notes B4, C5, D5, E5 with a slur; the second has notes F#5, G5, A5, B5 with a slur. Below the staff are two chord diagrams: the first is a triad of B4, C5, D5; the second is a triad of F#5, G5, A5.

Handwritten musical notation for the third system. The melody has two measures: the first has notes G#4, A4, B4, C5 with a slur; the second has notes D5, E5, F#5, G5 with a slur. Below the staff are two chord diagrams: the first is a triad of G#4, A4, B4; the second is a triad of D5, E5, F#5.

Handwritten musical score for the first system. The treble clef part begins with a whole note G4, followed by a quarter note A4, a quarter note B4, and a quarter note C5, all with accents (^). This is followed by a whole note B4 with a flat (Bb4) and a whole note C5 with a flat (Cb5). A dynamic marking 'f' is placed below the first measure. The bass clef part has a whole rest in the first measure, followed by a whole note chord consisting of G3, B2, and C3. A second measure is separated by a double bar line, showing a treble clef with a whole note chord of C5, Bb4, and A4, and a bass clef with a whole note chord of G3, B2, and C3. The system ends with a double bar line.

Handwritten musical score for the second system. The treble clef part starts with a circled key signature of three sharps (F#, C#, G#) and the instruction 'pesante'. It contains three measures of quarter notes: G4, A4, and B4. The bass clef part contains complex rhythmic patterns with eighth and sixteenth notes, including triplets and slurs. The system ends with a double bar line.

Handwritten musical score for the third system. The treble clef part begins with a dynamic marking 'pp' and a 4/8 time signature. It features a melodic line with slurs and accents, including notes like G4, A4, B4, C5, Bb4, and A4. The bass clef part contains chords, including a triad of G3, B2, and C3. The system ends with a double bar line.

Handwritten musical notation for the first system. The treble clef staff begins with a slur over a series of notes, with a piano (*p*) dynamic marking below it. The bass clef staff contains a whole rest followed by a melodic line with a sharp sign and various accidentals.

Handwritten musical notation for the second system. The treble clef staff shows several chords with accidentals. The bass clef staff features a melodic line with a sharp sign and various accidentals, including a double bar line.

Handwritten musical notation for the third system. The treble clef staff has a slur over a chord and a *pedal* marking. The bass clef staff contains a whole rest followed by a section labeled *frei* (ad libitum), indicated by a large bracket and dashed lines.

ritard
 Teil III. ad
 Coda

CODR

mod(auer)

Handwritten musical notation for the first system. The top staff is in treble clef and contains a series of notes with slurs and accents, including a sharp sign. The bottom staff is in bass clef and contains notes with a sharp sign and a double bar line.

Handwritten musical notation for the second system. The top staff is in treble clef and contains notes with slurs and accents. The bottom staff is in bass clef and contains notes with a sharp sign and a double bar line.

Handwritten musical notation for the third system. The top staff is in treble clef and contains notes with slurs and accents. The bottom staff is in bass clef and contains notes with a sharp sign and a double bar line.

Handwritten musical score for the first system. It consists of three staves, each with a treble clef and a common time signature. The notation includes various notes, rests, and dynamic markings. The first staff has a key signature of three sharps (F#, C#, G#) and a common time signature. The second and third staves have a key signature of two flats (Bb, Eb) and a common time signature. The first two staves are grouped by a brace on the left. The first two staves have a key signature of three sharps (F#, C#, G#) and a common time signature. The second and third staves have a key signature of two flats (Bb, Eb) and a common time signature. The first two staves are grouped by a brace on the left. The first two staves have a key signature of three sharps (F#, C#, G#) and a common time signature. The second and third staves have a key signature of two flats (Bb, Eb) and a common time signature. The first two staves are grouped by a brace on the left.

Handwritten musical score for the second system. It consists of three staves, each with a treble clef and a common time signature. The notation includes various notes, rests, and dynamic markings. The first staff has a key signature of three sharps (F#, C#, G#) and a common time signature. The second and third staves have a key signature of two flats (Bb, Eb) and a common time signature. The first two staves are grouped by a brace on the left. The first two staves have a key signature of three sharps (F#, C#, G#) and a common time signature. The second and third staves have a key signature of two flats (Bb, Eb) and a common time signature. The first two staves are grouped by a brace on the left.

großes gut.



1968 Ling
Adolf Scherbaum