

L.V. BEETHOVEN



# NOTENHEFT

W.A. MOZART



F. SCHUBERT



J. HAYDN



J. STRAUSS



Studie für Piano (3 Teile)  
Opus  
Schlagwerk

1958 Adolf Scherbaum

Schwarz wie Nacht und weiß wie Kleid  
Weiß wie Chartuch schwarz wie Baum  
Schwing den Kreis nur rund und weit  
Fall und schrei Oh Schwester mein,  
Mache daß der Geist erscheine,  
Wurf mir Fleisch und Knochen fort,  
Sei dem Geist ein Leib und Hort  
Der da grunzt in Dunkelheit

Weiß wie Kleid und Tanz im Kreis,  
Zügel fällt und Gegenwart,  
Wiederkehrt die Nacht von einst,  
Afrika erscheint im Wald,  
Asien auch in Spukgestalt,  
(Philip M. Shelock) (Zaubertranz)

Handwritten musical score for the first system, featuring three staves: Piano (P), Bass (B), and Subbass (S). The Piano staff contains complex chordal textures with various accidentals and dynamics. The Bass and Subbass staves show rhythmic patterns and bass lines. A circled 'P' is present in the Piano staff.

Handwritten musical score for the second system, continuing the three-staff format (Piano, Bass, Subbass). This system includes more intricate melodic lines in the Piano part and dynamic markings such as 'p' and 'f'.

Handwritten musical score for the third system, also in three staves. It features dense musical notation with various dynamics and articulation marks throughout the Piano, Bass, and Subbass parts.

Handwritten musical notation for the first system, consisting of three measures. The notation includes a treble clef, a key signature of one flat (B-flat), and a common time signature (C). The notes are written in a stylized, handwritten style. The first measure contains a sequence of notes: B-flat, A, G, F, E, D, C, B-flat. The second measure contains a sequence of notes: B-flat, A, G, F, E, D, C, B-flat. The third measure contains a sequence of notes: B-flat, A, G, F, E, D, C, B-flat. There are also some additional markings and symbols, including a large bracket under the first measure and some vertical lines.

Handwritten musical notation for the second system, consisting of three measures. The notation includes a treble clef, a key signature of one flat (B-flat), and a common time signature (C). The notes are written in a stylized, handwritten style. The first measure contains a sequence of notes: B-flat, A, G, F, E, D, C, B-flat. The second measure contains a sequence of notes: B-flat, A, G, F, E, D, C, B-flat. The third measure contains a sequence of notes: B-flat, A, G, F, E, D, C, B-flat. There are also some additional markings and symbols, including a large bracket under the first measure and some vertical lines.

Handwritten musical notation for the third system, consisting of three measures. The notation includes a treble clef, a key signature of one flat (B-flat), and a common time signature (C). The notes are written in a stylized, handwritten style. The first measure contains a sequence of notes: B-flat, A, G, F, E, D, C, B-flat. The second measure contains a sequence of notes: B-flat, A, G, F, E, D, C, B-flat. The third measure contains a sequence of notes: B-flat, A, G, F, E, D, C, B-flat. There are also some additional markings and symbols, including a large bracket under the first measure and some vertical lines.

# # =

Handwritten musical score for the first system. It consists of a grand staff with treble and bass clefs. The key signature has two sharps (F# and C#) and the time signature is 3/4. The notation includes chords, melodic lines, and dynamic markings like "din".

Handwritten musical score for the second system. It continues the piece with similar notation and dynamics.

Handwritten musical score for the third system, concluding the piece with a final cadence.

--	--	--	--

--	--	--	--

--	--	--	--

Handwritten musical score for the first system, featuring a grand staff with three staves. The notation includes various notes, rests, and dynamic markings such as  $ff$  and accents ( $\wedge$ ). The first staff contains complex chordal structures with accidentals. The second staff shows rhythmic patterns with stems and flags. The third staff contains a melodic line with eighth notes.

Handwritten musical score for the second system, continuing the grand staff notation. It features similar chordal and rhythmic elements as the first system, with dynamic markings and accents. The notation is dense and includes various accidentals and rhythmic values.

Handwritten musical score for the third system, continuing the grand staff notation. This system includes a circled  $ff$  marking and features complex chordal textures and rhythmic patterns across the three staves.

Handwritten musical score for the first system. It features a grand staff with three staves. The top staff has a treble clef and a key signature of one sharp (F#). The middle and bottom staves have bass clefs. The notation includes various notes, rests, and dynamic markings. A bracket above the first two staves is labeled "8" and "dim". The word "dim" is written above the second staff. The first staff has "mf = dim" written next to it. The second staff has "p" written below it. The third staff has "mf" written below it. The system concludes with a double bar line.

Handwritten musical score for the second system. It features a grand staff with three staves. The top staff has a treble clef and a key signature of one sharp (F#). The middle and bottom staves have bass clefs. The notation includes various notes, rests, and dynamic markings. The word "dim" is written above the first staff. The second staff has "p" written below it. The system concludes with a double bar line.

Handwritten musical score for the third system. It features a grand staff with three staves. The top staff has a treble clef and a key signature of one sharp (F#). The middle and bottom staves have bass clefs. The notation includes various notes, rests, and dynamic markings. The word "Pedal" is written below the first staff. The second staff has "p" written below it. The third staff has "p" written below it. The system concludes with a double bar line.



Handwritten musical score system 1, consisting of three staves. The top staff is in treble clef with notes:  $f$ ,  $b_1^{\wedge}$ ,  $b_2^{\wedge}$ ,  $b_3^{\wedge}$ ,  $b_4^{\wedge}$ ,  $b_5^{\wedge}$ ,  $b_6^{\wedge}$ . The middle staff is in bass clef with notes:  $b_1$ ,  $b_2$ ,  $b_3$ ,  $b_4$ ,  $b_5$ ,  $b_6$ . The bottom staff is a piano accompaniment with rhythmic notation. Pedal markings are present in the middle staff.

Handwritten musical score system 2, consisting of three staves. The top staff is in treble clef with notes:  $f$ ,  $f$ ,  $f$ . The middle staff is in bass clef with notes:  $b_1$ ,  $b_2$ ,  $b_3$ ,  $b_4$ ,  $b_5$ ,  $b_6$ . The bottom staff is a piano accompaniment with rhythmic notation. Pedal markings are present in the middle staff.

Handwritten musical score system 3, consisting of three staves. The top staff is in treble clef with notes:  $f$ ,  $f$ ,  $f$ . The middle staff is in bass clef with notes:  $b_1$ ,  $b_2$ ,  $b_3$ ,  $b_4$ ,  $b_5$ ,  $b_6$ . The bottom staff is a piano accompaniment with rhythmic notation. Pedal markings are present in the middle staff.

Handwritten musical score, first system. It consists of three staves. The top staff has a treble clef and contains several chords with accents (^) and a dynamic marking  $f =$ . The middle staff has a bass clef and contains a melodic line with notes and accidentals (flats and naturals). The bottom staff has a bass clef and contains rhythmic notation represented by vertical lines. A  $f =$  marking is also present above the middle staff.

Handwritten musical score, second system. It consists of three staves. The top staff has a treble clef and contains chords with accents (^) and a dynamic marking  $f =$ . The middle staff has a bass clef and contains a melodic line with notes and accidentals, including a  $f =$  marking and a  $f =$  marking above the staff. The bottom staff has a bass clef and contains rhythmic notation. A  $f =$  marking is also present below the bottom staff.

Handwritten musical score, third system. It consists of three staves. The top staff has a treble clef and contains notes with slurs and a dynamic marking  $ff$ . The middle staff has a bass clef and contains notes with slurs and a dynamic marking  $ff$ . The bottom staff has a bass clef and contains notes with slurs and a dynamic marking  $ff$ . The word "Solo" is written in the middle of the bottom staff, and "dim" is written at the end of the system.

Handwritten musical notation for the first system, featuring a treble clef and a bass clef. The notation includes notes, rests, and dynamic markings such as  $f$  and  $mf$ . A circled  $f$  is present in the bass staff. The system is divided into four measures.

Handwritten musical notation for the second system, continuing the piece. It includes a treble clef and a bass clef. The notation features notes, rests, and dynamic markings like  $f$  and  $mf$ . A circled  $f$  is visible in the bass staff. The system is divided into four measures.

Handwritten musical notation for the third system, which includes a treble clef and a bass clef. A circled  $f$  is prominently displayed in the center. The notation includes notes, rests, and dynamic markings such as  $f$  and  $mf$ . The system is divided into four measures.



Handwritten musical score for the first system. It consists of a grand staff with a treble clef on the top line and a bass clef on the bottom line. The music is written in a single system with a piano (p) dynamic marking. The notation includes several measures with notes, rests, and slurs. There are also some markings that look like 'v' and 'N' above the notes.

Handwritten musical score for the second system. It starts with a 'poco' marking above the treble clef. The notation includes notes, rests, and slurs across several measures. There are also some markings that look like 'v' and 'N' above the notes.

Handwritten musical score for the third system. It continues the musical notation with notes, rests, and slurs across several measures. There are also some markings that look like 'v' and 'N' above the notes.

Handwritten musical score for a string quartet. The score is written on four staves. The first staff is in treble clef with a key signature of one sharp (F#). The second staff is in bass clef. The third and fourth staves are in bass clef with a key signature of one sharp (F#). The notation includes notes, rests, and dynamic markings such as 'p' and 'f'. There are also some handwritten annotations and a circled 'p' at the end of the fourth staff.

Baß Solo (frei)

Handwritten musical notation for a bass solo. It consists of a single staff with a bass clef and a key signature of one sharp (F#). The notation includes notes, rests, and dynamic markings like 'p' and 'f'. There are also some handwritten annotations and a circled 'p' at the end of the staff.

Handwritten musical notation for two staves. The first staff has a treble clef and a key signature of one sharp (F#). The second staff has a bass clef and a key signature of one sharp (F#). The notation includes notes, rests, and dynamic markings like 'p' and 'f'. There are also some handwritten annotations and a circled 'p' at the end of the second staff.

ins Tempo 1. übergehen

Handwritten musical notation for a single staff with a bass clef and a key signature of one sharp (F#). The notation includes notes, rests, and dynamic markings like 'p' and 'f'. There are also some handwritten annotations and a circled 'p' at the end of the staff.

**CODA** immer schwächer werden

Handwritten musical score for the first system. It consists of a grand staff with piano and pedal parts. The piano part has notes with accents and a circled 'pp' dynamic marking. The pedal part has a downward-pointing arrow. The system concludes with a fermata over a final chord.

Handwritten musical score for the second system. It consists of a grand staff with piano and pedal parts. The piano part has a long melodic line with a slur and a circled 'pp' dynamic marking. The pedal part has a long note with a slur. To the right, there is a large circle with a vertical line through it, labeled 'Fine' and 'lunge'.

-----

-----

-----

-----

-----

-----

-----

-----

-----

-----

-----



langsam (aber nicht schleppend) 2.

The image shows a handwritten musical score for a string quartet, organized into three systems. Each system contains four staves, representing the four instruments. The notation includes notes, rests, and various performance markings such as accents and slurs. The first system is marked with a circled '1' and includes the instruction 'langsam (aber nicht schleppend) 2.' at the top. The second system is marked with a circled '2' and the first system with a circled '3'. The third system is marked with a circled '4'. The score is written in a cursive, handwritten style.

Handwritten musical score for the first system. It consists of three staves. The top staff is for the piano, marked with a circled 'f' and contains several chords with accents (^) and slurs. The middle staff is for the violin, marked with a circled 'f' and contains a melodic line with accents (^) and slurs. The bottom staff is for the violin, marked with a circled 'f' and contains a melodic line with accents (^) and slurs. Dynamics include 'ff' and 'f'. There are also some handwritten notes and markings.

Handwritten musical score for the second system. It consists of three staves. The top staff is for the piano, marked with a circled 'f' and contains chords with accents (^) and slurs. The middle staff is for the violin, marked with a circled 'f' and contains a melodic line with accents (^) and slurs. The bottom staff is for the violin, marked with a circled 'f' and contains a melodic line with accents (^) and slurs. Dynamics include 'ff' and 'f'. There are also some handwritten notes and markings.

du  
du  
du

Handwritten musical score for the third system. It consists of three staves. The top staff is for the piano, marked with a circled 'f' and contains chords with accents (^) and slurs. The middle staff is for the violin, marked with a circled 'f' and contains a melodic line with accents (^) and slurs. The bottom staff is for the violin, marked with a circled 'f' and contains a melodic line with accents (^) and slurs. Dynamics include 'ff' and 'f'. There are also some handwritten notes and markings.





Handwritten musical notation on a grand staff. The left hand part includes notes with accidentals (sharps and naturals) and dynamic markings like  $f$  and  $p$ . The right hand part features a melodic line with notes and rests, and a circled  $p$  marking.

Handwritten musical notation on a grand staff. The left hand part shows a series of notes with stems, some with accidentals, and a circled  $p$  marking. The right hand part includes a circled  $p$  marking and a circled  $f$  marking. The text "(26x mit)" is written above the right hand part. On the far right, there is a vertical label: "Klavier- und Orgel".

Handwritten musical notation on a grand staff. The left hand part includes notes with stems and accidentals, and dynamic markings like  $pp$ . The right hand part features notes with stems and accidentals, and dynamic markings like  $m$  and  $pp$ . The text "C-Ordnung" is written vertically on the right side.

masculine grandeur ( $\frac{4}{4}$ ) (2te + Tempo molto moderato) + 2te + ff)

Handwritten musical score for the first system, measures 1-3. The notation includes a grand staff with treble and bass clefs. The treble clef part contains a melodic line with slurs and accents. The bass clef part contains a rhythmic accompaniment with notes and rests. Dynamics include 'pp=' and 'p='.

Handwritten musical score for the second system, measures 4-6. The notation continues the grand staff. The treble clef part shows a melodic line with slurs and accents. The bass clef part shows a rhythmic accompaniment. Dynamics include 'p=' and 'f='.

Handwritten musical score for the third system, measures 7-9. The notation continues the grand staff. The treble clef part shows a melodic line with slurs and accents. The bass clef part shows a rhythmic accompaniment. Dynamics include 'f='.

Tempo (vorwärts) →

Handwritten musical score for the first system. The piano part (top staff) features a series of chords with accidentals (sharps and flats) and slurs. The bass line (middle staff) consists of a sequence of notes:  $b_1 - 2 - 1 - 2$ . The bottom staff contains rhythmic markings:  $1 \quad 1 \quad 1 \quad 1$ . The word "accel." is written above the piano part in the second measure.

Handwritten musical score for the second system. The piano part (top staff) features triplets of chords, each marked with a "3" below it. A circled annotation "accel!" is written in the first measure. The bass line (middle staff) consists of a sequence of notes:  $1 - 2 - 1 - 2$ . The bottom staff contains rhythmic markings:  $1 \quad 1 \quad 1 \quad 1$ .

Handwritten musical score for the third system. The piano part (top staff) features chords with slurs. The bass line (middle staff) consists of a sequence of notes:  $1 - 2 - 1 - 2$ . The bottom staff contains rhythmic markings:  $1 \quad 1 \quad 1 \quad 1$ .

Handwritten musical notation on a grand staff (treble and bass clefs). The top staff contains a melodic line with notes and slurs, and a key signature change from one sharp to one flat. The bottom staff contains a bass line with notes and rests. Vertical bar lines divide the music into measures.

Handwritten musical notation on a grand staff. The top staff features a melodic line with notes and slurs, including a key signature change from one sharp to one flat. The bottom staff contains a bass line with notes and rests. Vertical bar lines divide the music into measures.

Handwritten musical notation on a grand staff. The top staff contains a melodic line with notes and slurs, and a key signature change from one flat to one sharp. The bottom staff contains a bass line with notes and rests. Vertical bar lines divide the music into measures.

2. rit + dim - - -

Handwritten musical score for the first system. It consists of two staves. The upper staff is for a piano (p) and contains a long, sustained note with a dynamic marking of *rit + dim* and a circled 'p'. The lower staff is for strings and contains a sequence of notes with stems, including accidentals (sharps and flats), and dynamic markings like *pp* and *ppp*. There are also some handwritten annotations like 'rit' and 'dim'.

Lento

Handwritten musical score for the second system. The upper staff is for a piano (p) and contains rests. The lower staff is for strings and contains notes with stems and dynamic markings like *pp*. The tempo marking *Lento* is written above the piano staff.

Tempo ①

Handwritten musical score for the third system. The upper staff is for a piano (p) and contains notes with stems and dynamic markings like *pp*. The lower staff is for strings and contains notes with stems and dynamic markings like *ppp*. The tempo marking *Tempo ①* is written above the piano staff.

Del.  
 col  
 (G)  
 COPA



~~CODA~~

(rit - dim)

Handwritten musical score for the first system. It consists of a grand staff with treble and bass clefs. The music includes various notes, rests, and slurs. Dynamics include *pp* and *pp*. The notation is somewhat sketchy and appears to be a working draft.

*tento*

*lunga*

*Fine*

Handwritten musical score for the second system. It consists of a grand staff with treble and bass clefs. The music includes various notes, rests, and slurs. Dynamics include *pp* and *pp*. A large oval-shaped structure is drawn around the upper part of the staff, containing a series of notes with sharp signs. The word *Fine* is written at the end of the system. The notation is somewhat sketchy and appears to be a working draft.

*facies solo!*

# Teil ③

solo *ritard.*

Handwritten musical score for the first system. It features a treble clef and a large '2' indicating a second ending. The music consists of a single melodic line on the treble staff. A piano (*pp*) dynamic marking is present. There are some handwritten notes below the staff, including the word "Solo" and some rhythmic markings.

Handwritten musical score for the second system. It features a treble clef and a circled *pp* dynamic marking. The music consists of a single melodic line on the treble staff. There are various musical notations, including slurs and accents, and some handwritten notes below the staff.

Handwritten musical score for the third system. It features a treble clef and a *cresc.* marking with an arrow. The music consists of a single melodic line on the treble staff. There are various musical notations, including slurs and accents, and some handwritten notes below the staff.

Handwritten musical notation on a grand staff. The left hand (treble clef) contains a sequence of notes:  $b^{\flat}$ ,  $f^{\sharp}$ ,  $a^{\natural}$ ,  $b^{\flat}$ ,  $f^{\sharp}$ ,  $a^{\natural}$ . The right hand (bass clef) contains notes:  $b^{\flat}$ ,  $f^{\sharp}$ ,  $a^{\natural}$ ,  $b^{\flat}$ ,  $f^{\sharp}$ ,  $a^{\natural}$ . There are various annotations including arrows and symbols like  $\hat{}$  and  $\wedge$ .

Handwritten musical notation on a grand staff. The left hand (treble clef) contains notes:  $b^{\flat}$ ,  $f^{\sharp}$ ,  $a^{\natural}$ ,  $b^{\flat}$ ,  $f^{\sharp}$ ,  $a^{\natural}$ . The right hand (bass clef) contains notes:  $b^{\flat}$ ,  $f^{\sharp}$ ,  $a^{\natural}$ ,  $b^{\flat}$ ,  $f^{\sharp}$ ,  $a^{\natural}$ . There are various annotations including arrows and symbols like  $\hat{}$  and  $\wedge$ .

Handwritten musical notation on a grand staff. The left hand (treble clef) contains notes:  $b^{\flat}$ ,  $f^{\sharp}$ ,  $a^{\natural}$ ,  $b^{\flat}$ ,  $f^{\sharp}$ ,  $a^{\natural}$ . The right hand (bass clef) contains notes:  $b^{\flat}$ ,  $f^{\sharp}$ ,  $a^{\natural}$ ,  $b^{\flat}$ ,  $f^{\sharp}$ ,  $a^{\natural}$ . There are various annotations including arrows and symbols like  $\hat{}$  and  $\wedge$ .

Handwritten musical score for the first system. It features a grand staff with treble and bass clefs. The key signature is one sharp (F#) and the time signature is 3/4. The music consists of three measures with various notes, rests, and slurs.

Handwritten musical score for the second system. It continues the piece with a grand staff. The key signature is one sharp (F#) and the time signature is 3/4. The music features a prominent slur over the first measure and various rhythmic patterns.

Handwritten musical score for the third system. It continues the piece with a grand staff. The key signature is one sharp (F#) and the time signature is 3/4. The music features a prominent slur over the first measure and various rhythmic patterns.

Handwritten musical score, first system. It consists of three staves. The top staff has a treble clef and a key signature of one flat (B-flat). It features a melodic line with a slur over the first two measures and a fermata over the second measure. The middle staff has a bass clef and contains a rhythmic pattern of quarter notes. The bottom staff has a bass clef and contains a rhythmic pattern of quarter notes. There are dynamic markings 'f' and 'ff' throughout the system.

Handwritten musical score, second system. It consists of three staves. The top staff has a treble clef and a key signature of one flat. It features a melodic line with a slur over the first two measures and a fermata over the second measure. The middle staff has a bass clef and contains a rhythmic pattern of quarter notes. The bottom staff has a bass clef and contains a rhythmic pattern of quarter notes. There are dynamic markings 'ff' and 'f' throughout the system.

Handwritten musical score, third system. It consists of three staves. The top staff has a treble clef and a key signature of one flat. It features a melodic line with a slur over the first two measures and a fermata over the second measure. The middle staff has a bass clef and contains a rhythmic pattern of quarter notes. The bottom staff has a bass clef and contains a rhythmic pattern of quarter notes. There are dynamic markings 'f' and 'ff' throughout the system.

Handwritten musical score for the first system. It consists of a grand staff with treble and bass clefs. The piano part is written in the bass clef with notes and stems. There are some annotations, including a circled '24' and the word 'Solo'.

Handwritten musical score for the second system. It includes a grand staff with treble and bass clefs. The piano part features notes and stems. Annotations include 'pp =', 'Solo', and a circled '25'.

Handwritten musical score for the third system. It includes a grand staff with treble and bass clefs. The piano part features notes and stems. Annotations include 'p =', 'Solo', and a circled '26'.

Handwritten musical notation for the first system, consisting of three staves. The top staff is a treble clef with notes and rests, including a circled 'p' and a '2' above a slur. The middle staff is an alto clef with notes and rests. The bottom staff is a bass clef with notes and rests, including a circled 'p' and a '2' above a slur. The system is divided into three measures.

Handwritten musical notation for the second system, consisting of three staves. The top staff is a treble clef with notes and rests, including a circled 'p' and a '2' above a slur. The middle staff is an alto clef with notes and rests. The bottom staff is a bass clef with notes and rests, including a circled 'p' and a '2' above a slur. The system is divided into three measures.

Handwritten musical notation for the third system, consisting of three staves. The top staff is a treble clef with notes and rests, including a circled 'p' and a '2' above a slur. The middle staff is an alto clef with notes and rests. The bottom staff is a bass clef with notes and rests, including a circled 'p' and a '2' above a slur. The system is divided into three measures.



Handwritten musical score for the first system. It features a grand staff with five staves. The bottom staff contains rhythmic notation with notes and stems, and is marked with a circled 'H'. Above the bottom staff, there are several upward-pointing arrows and notes, with the word 'Solo' written above the first measure. The right side of the system is enclosed in a thick black border.

Handwritten musical score for the second system. It features a grand staff with five staves. The bottom staff contains rhythmic notation with notes and stems, and is marked with a circled 'H'. Above the bottom staff, there are several upward-pointing arrows and notes, with the word 'dim' written above the first measure. The right side of the system is enclosed in a thick black border with the letters 'D.C.' written vertically next to it. A circled 'pp' is located at the bottom right of the system.

Handwritten musical score for the third system. It features a grand staff with five staves. The bottom staff contains rhythmic notation with notes and stems, and is marked with a circled 'H'. Above the bottom staff, there are several upward-pointing arrows and notes, with the words 'dim rit' written above the first measure. A large downward-pointing arrow is drawn from the 'dim rit' text to the first measure of the bottom staff. The right side of the system is enclosed in a thick black border. A circled 'pp' is located at the bottom right of the system.



Lumpsum (Bluestemp)

Handwritten musical score for 'Lumpsum (Bluestemp)'. The score is written on a grand staff with three systems. The first system contains three measures, the second system contains three measures, and the third system contains three measures. The notation includes treble and bass clefs, a key signature of two flats (B-flat and E-flat), and a 4/4 time signature. The music features complex chordal textures with many accidentals (sharps, flats, naturals) and various rhythmic values (quarter, eighth, and sixteenth notes). There are several slurs and accents throughout the piece. The handwriting is somewhat dense and includes some corrections and markings.

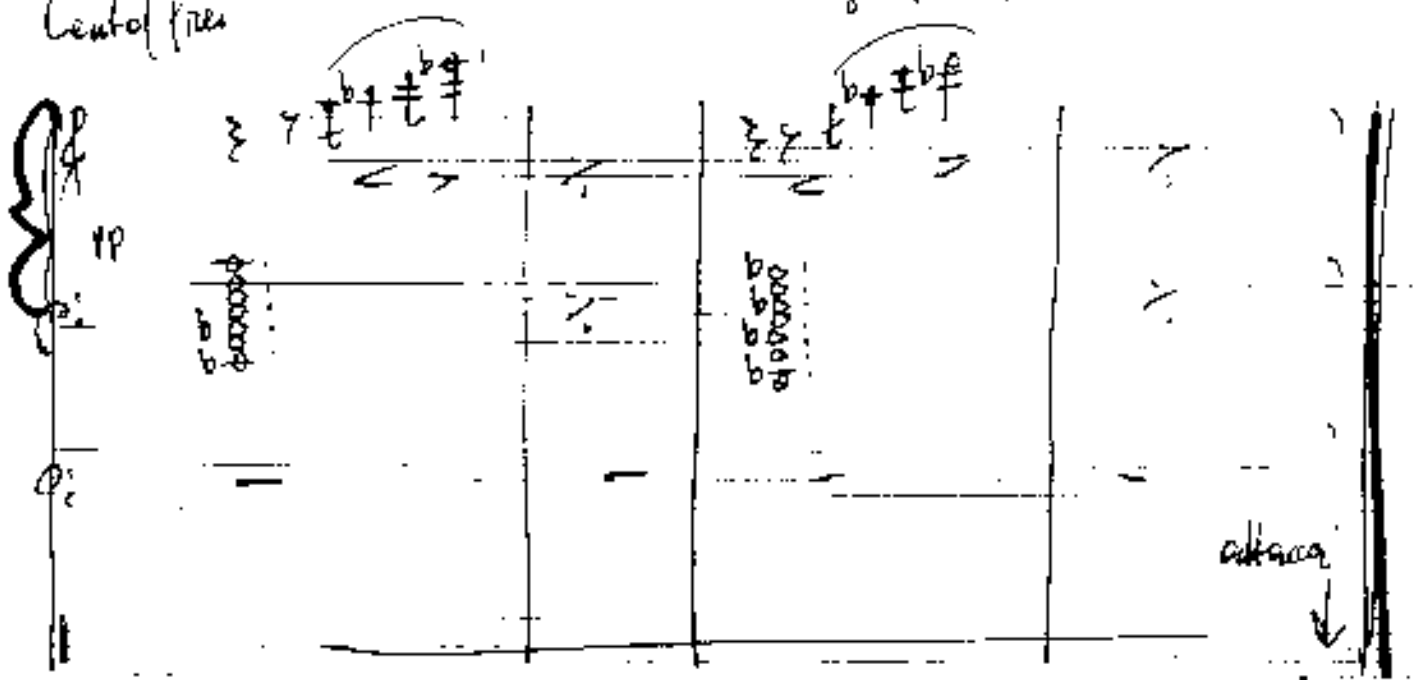
Handwritten musical score, first system. It consists of three staves. The top staff has a treble clef and contains several measures of music with notes and rests, some marked with accents (^). The middle staff has a bass clef and contains a series of rhythmic markings, possibly representing a drum part, with some notes. The bottom staff has a bass clef and contains a series of rhythmic markings. There are various annotations, including a circled 'p' in the first measure of the top staff and a circled 'p' in the second measure of the middle staff.

Handwritten musical score, second system. It consists of three staves. The top staff has a treble clef and contains several measures of music with notes and rests, some marked with accents (^). The middle staff has a bass clef and contains a series of rhythmic markings, possibly representing a drum part, with some notes. The bottom staff has a bass clef and contains a series of rhythmic markings. There are various annotations, including the word 'din' written above the middle staff in three places and circled 'p' marks at the end of the system.

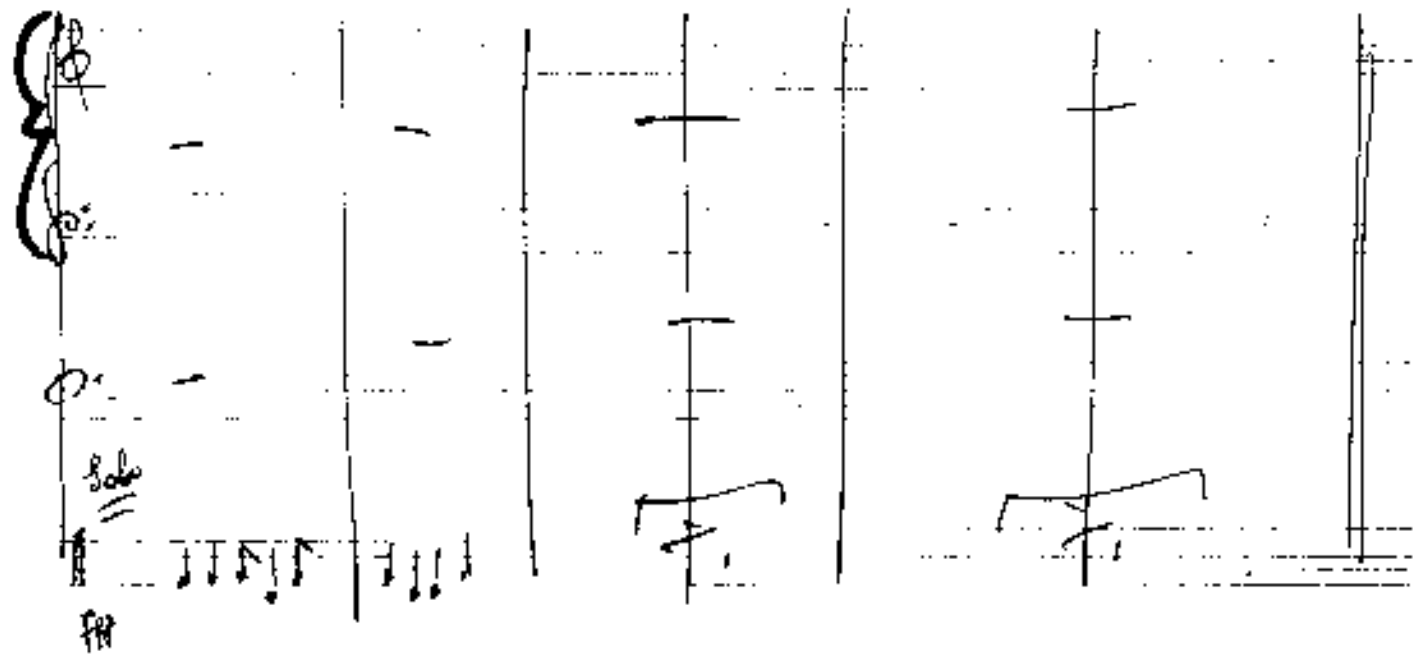
Handwritten musical score, third system. It consists of three staves. The top staff has a treble clef and contains several measures of music with notes and rests, some marked with accents (^). The middle staff has a bass clef and contains a series of rhythmic markings, possibly representing a drum part, with some notes. The bottom staff has a bass clef and contains a series of rhythmic markings. There are various annotations, including the word 'Solo' written above the top staff, a circled 'p' in the middle staff, and the text '(2te\* part)' at the bottom right. The system is enclosed in a large, hand-drawn frame on the right side.

Centofree

Größtes gut ---



Part 3 al  $\text{♩}$   
CODA



(sempre dim) bis pp

(3 + 11) (48 Tabite)

Breit

Handwritten musical score for guitar, consisting of several staves. The notation includes notes, rests, and dynamic markings. Annotations include:

- Top staff:** A series of notes with upward-pointing arrows above them, indicating a melodic line.
- Second staff:** Notes with upward-pointing arrows, similar to the top staff.
- Third staff:** Rhythmic notation with notes and rests, including a circled 'Pit' at the beginning.
- Fourth staff:** Rhythmic notation with notes and rests, including a circled 'A' and 'A' notes.
- Bottom section:** A section labeled "freies Solo mit Abschlag" (free solo with release) with rhythmic notation.
- Right side:** A vertical line with a circle at the top containing the word "Fare".
- Annotations:** "Traditionals A außen Bein" is written at the top right. "Pedal" is written near the bottom left.

*Adolf Schenk*