

KONZERT FÜR FLÖTE

GR. STREICHORCHESTER
VIBRAPHON XYLOPHON KLAVIER
1968 — R. SCHERBAUM

BESETZUNG: 14-16 1. VIOLINEN
13-14 2. VIOLINEN
(ODER INSGESAMT 25-30 VIOLINEN
10-12 CELLI
9-10 BÄSSE.

Notenheft KLAVIER;
VIBRAPHON, XYLOPHON —

Spielzeit circa 15 MINUTEN.

KONZERT FÜR HÖRER

Teil 1

GROSSES STREICHORCHESTER

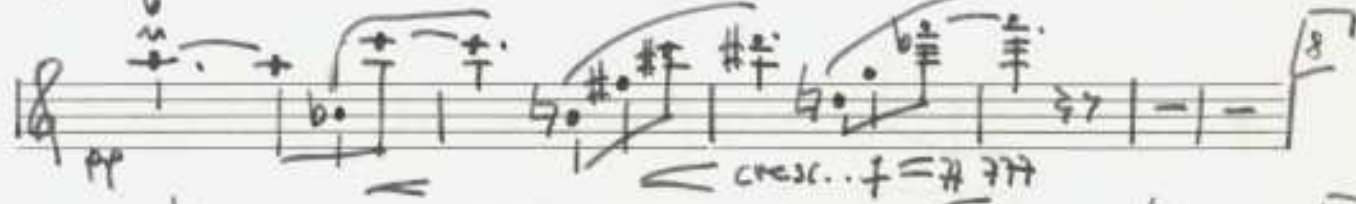
Sehr langsam

VIBRAPHON XYLOPHON

1968 A. Scherbaum

KLAVIER

(1)



Handwritten musical score for measures 12-15. The notation is in treble clef with a key signature of one sharp (F#). Measure 12 shows a melodic line starting with a dotted quarter note. Measure 13 includes the instruction "accell..." with an arrow pointing right. Measure 14 includes "frei" and "erregt." with a fermata over a note, and "LANG" with an arrow pointing right. Measure 15 includes "LANG" with an arrow pointing right. A "Tempo" section is indicated below measure 15 with a series of horizontal lines.

Handwritten musical score for measures 16-17. Measure 16 starts with a dynamic marking of "fp" and includes a fermata. Measure 17 includes dynamic markings of "fp" and "pp".

Handwritten musical score for measures 18-19. Measure 18 includes a dynamic marking of "f". Measure 19 includes dynamic markings of "f" and "pp".

Handwritten musical score for measures 20-21. Measure 20 includes dynamic markings of "fp" and "f". Measure 21 includes dynamic markings of "f" and "pp".

Handwritten musical score for measures 22 and the end of the piece. Measure 22 includes the instruction "frei" and a dynamic marking of "pp". The piece concludes with a double bar line and the word "FIN".

Teil II.

SO RASCH ALS MÖGLICH

Handwritten musical score for Part II, titled "SO RASCH ALS MÖGLICH". The score is written in 6/8 time and one flat key signature. It consists of 11 staves of music. The first seven staves contain melodic lines with various ornaments and dynamics. Staves 8, 9, and 10 are marked "pmp", "mf", and "f" respectively, and feature a "rampre cresc." instruction. Staff 11 concludes with a double bar line and a repeat sign.

Handwritten musical score for a single melodic line, likely for a flute or piccolo. The score is written on ten staves, numbered 11 through 21. The time signature is 6/8, and the key signature is one flat (B-flat).

Measures 11-12: Rests in 6/8, 5/8, and 3/8 time signatures.

Measures 13-14: Rests in 6/8, 5/8, and 3/8 time signatures.

Measures 15-16: Melodic lines with various accidentals (sharps, flats, naturals) and slurs.

Measures 17-18: Melodic lines with slurs and dynamic markings.

Measures 19-20: Melodic lines with slurs and dynamic markings.

Measure 21: Melodic line with dynamic markings and a double bar line.

Additional markings include *Trci*, *colli*, *ROGGIO*, *G.P.*, *erregt.*, *ppp*, *pp*, and *FINE*.

PRESTISSIMO *Adolf Schönbauer*