

Streichquartett
1968

Adolf Scherbaum

Notenheft

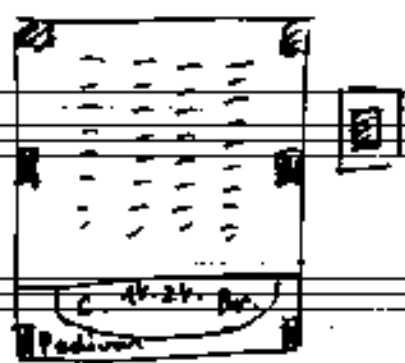
77a

Herrn Parizak
solobratender der ^{Linie} ~~Prochumeradanters~~
freundlichst zugewandt.

5 Teile für (Teil A)
Streichquartett
1968

Adolf Scherbaum

bei öffentlichen
Auführungen
jedes Soloinstrument
ein eigenes Mikrophon
mit Verstärkeranlage
(und einem Hallgerät) für alle
aufrecht des Solisten).



I.

Handwritten musical score for the first system, featuring four staves labeled IV, ZV, Brn, and C.

- Staff IV:** Contains a large blacked-out section in the first measure. In the second measure, there are notes with accidentals (b, #) and dynamic markings (f, mf).
- Staff ZV:** Starts with a whole note and rests. In the second measure, there are notes with accidentals and a dynamic marking of *pp*.
- Staff Brn:** Starts with a whole note and rests. In the second measure, there are notes with accidentals and a dynamic marking of *pp*.
- Staff C:** Starts with a whole note and rests. In the second measure, there are notes with accidentals and a dynamic marking of *pp*.

Handwritten musical score for the second system, featuring four staves.

- Staff 1 (top):** Contains notes with accidentals and dynamic markings (*pp*).
- Staff 2:** Contains notes with accidentals and dynamic markings (*pp*).
- Staff 3:** Contains notes with accidentals and dynamic markings (*pp*).
- Staff 4 (bottom):** Contains notes with accidentals and dynamic markings (*ffp*, *f*, *f*).

Handwritten musical score for the first system, consisting of four staves. The notation includes notes, rests, and dynamic markings such as *pp*. A large slur spans across the top of the staves, and various accidentals (sharps and flats) are present. The bottom staff has a clef and a key signature of one sharp.

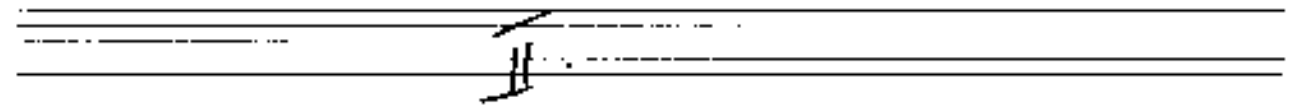
Handwritten musical score for the second system, consisting of four staves. The notation includes notes, rests, and dynamic markings such as *pp* and *ppp*. A large slur spans across the top of the staves. The instruction "poco rit..." is written in the lower right area. The bottom staff has a clef and a key signature of one sharp.

Tempo 1.

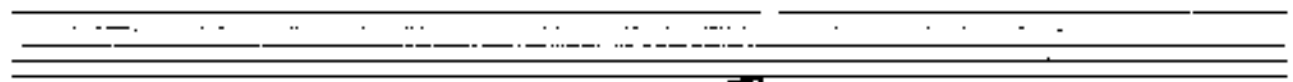
Handwritten musical score for the first system. It consists of a grand staff with three staves (treble, alto, and bass clefs) and a separate staff below. The music includes notes, rests, and dynamic markings such as *p*. There are also some handwritten annotations above the staves, including a sharp sign and a vertical line.

Handwritten musical score for the second system. It features a vocal line with lyrics: "pp = profertit...". Below the vocal line is a piano accompaniment with dynamic markings *pp >* on the treble and bass staves. The system concludes with a *FIN.* marking. There are also some handwritten notes and symbols above the staves, including a sharp sign and a vertical line.

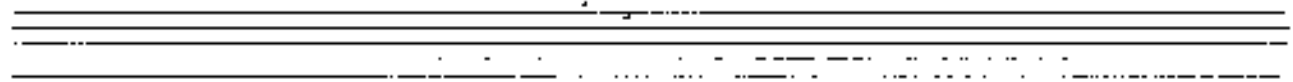
Blank lined paper with horizontal ruling lines.



Handwritten musical notation on four staves. The notation includes notes, rests, and various symbols such as $\#$, b , and $\hat{}$. A double bar line is present. Above the first staff, there is a symbol resembling a double bar line with a vertical line through it, and a small note with an equals sign. A large slur covers the top two staves across the first two measures.



Handwritten musical notation on four staves. The notation includes notes, rests, and various symbols such as $\#$, b , and $\hat{}$. A large slur covers the top staff across the first two measures. The notation is sparse, with many rests in the lower staves.



Handwritten musical score for the first system, consisting of four staves. The notation includes notes, rests, and dynamic markings such as *pp* and *>ppp*. The first staff has a treble clef and a key signature of one sharp (F#). The second and third staves have alto and bass clefs, respectively. The fourth staff has a bass clef. The music is divided into three measures by vertical bar lines. The first measure contains notes and rests with *pp* markings. The second measure continues the notation with *>ppp* markings. The third measure features a complex rhythmic pattern with a large '2' above the staff and a large '8' below it, indicating a specific tempo or performance instruction.

Handwritten musical score for the second system, continuing the notation from the first system. It consists of four staves with notes, rests, and dynamic markings. The first staff has a treble clef and a key signature of one sharp (F#). The second and third staves have alto and bass clefs, respectively. The fourth staff has a bass clef. The music is divided into three measures by vertical bar lines. The first measure contains notes and rests with *pp* markings. The second measure continues the notation with *>ppp* markings. The third measure features a complex rhythmic pattern with a large '2' above the staff and a large '8' below it, indicating a specific tempo or performance instruction.

Handwritten musical score for the first system. The score is written on a grand staff with a treble clef, a key signature of one sharp (F#), and a 4/4 time signature. The melody line features a slur over the first two measures and a crescendo hairpin over the remaining measures. The bass line consists of chords and a dynamic marking of ppp. The notes in the melody are: F#4, G#4, A4, B4, C5, D5, E5, F#5, G#5, A5, B5, C6, D6, E6, F#6, G#6, A6, B6, C7, D7.

Handwritten musical score for the second system. The score is written on a grand staff with a treble clef, a key signature of one sharp (F#), and a 4/4 time signature. The melody line features a slur over the first two measures and a crescendo hairpin over the remaining measures. The bass line consists of chords and a dynamic marking of ppp. The notes in the melody are: F#4, G#4, A4, B4, C5, D5, E5, F#5, G#5, A5, B5, C6, D6, E6, F#6, G#6, A6, B6, C7, D7.

Handwritten musical score for the first system, consisting of four staves. The notation includes notes, rests, and dynamic markings such as *ppp* and accents. The first staff has a treble clef and a key signature of one sharp (F#). The second staff has a treble clef and a key signature of one flat (Bb). The third and fourth staves have bass clefs and a key signature of one sharp (F#). The music is written in a 4/4 time signature. The first staff begins with a rest, followed by a note with an accent and *ppp* marking. The second staff has a rest, followed by notes with accents and *ppp* markings. The third and fourth staves have rests, followed by notes with accents and *ppp* markings. The system concludes with a long horizontal line across all staves.

Handwritten musical score for the second system, consisting of four staves. The notation includes notes, rests, and dynamic markings such as *ppp* and accents. The first staff has a treble clef and a key signature of one sharp (F#). The second staff has a treble clef and a key signature of one flat (Bb). The third and fourth staves have bass clefs and a key signature of one sharp (F#). The music is written in a 4/4 time signature. The first staff begins with a rest, followed by notes with accents and *ppp* markings. The second staff has a rest, followed by notes with accents and *ppp* markings. The third and fourth staves have rests, followed by notes with accents and *ppp* markings. The system concludes with a long horizontal line across all staves, followed by the word "FIN" written in the upper right corner.

III

$\downarrow = 200$

Handwritten musical score for Block A, measures 1-4. The score is written on a grand staff with treble and bass clefs. The tempo is marked as $\downarrow = 200$. The key signature has one flat (B-flat). The notation includes various notes, rests, and accidentals. The first measure contains a complex chordal structure with notes like B-flat, D, F, and A-flat. The second measure features a descending line of notes. The third and fourth measures show a more active melodic line with notes like G, F, E, and D. The label "BLOCK A" is written in a box at the bottom right of the first system.

Handwritten musical score for Block A, measures 5-8. This system continues the piece from the previous system. The notation is consistent with the first system, showing a continuation of the melodic and harmonic ideas. The key signature remains one flat. The piece concludes with a final chord in the eighth measure.

Handwritten musical score for a piano piece. The score consists of four staves. The top staff is in treble clef with a key signature of one sharp (F#) and a 4/4 time signature. The second and third staves are in alto clef (C4), and the bottom staff is in bass clef. The music features a complex rhythmic and melodic structure with many accidentals. A large bracket under the bottom two staves is labeled "BLOCK [B]".

Handwritten musical staff in treble clef. It shows two sections of music, each labeled "BLOCK [A]". The first section is a continuous melodic line. The second section is a shorter melodic phrase. Small square boxes are placed at the end of each section.

Handwritten musical staff in treble clef. It shows three sections of music, each labeled "Bl. B.". Each section is a melodic phrase. Small square boxes are placed at the end of each section.

Handwritten musical staff in treble clef. It contains several annotations and musical markings:

- An arrow pointing right with the text "noch steigern im Tempo" (further increase in tempo).
- Two sections of music, each labeled "BL. [A]".
- The instruction "hart abreißen" (pull off hard) with an arrow pointing to the end of the second "BL. [A]" section.
- A box labeled "G.P." (Grave) at the bottom of the staff.
- Small square boxes are placed at the end of the two "BL. [A]" sections and at the end of the staff.

Handwritten musical score for piano, consisting of five staves. The notation includes treble and bass clefs, a key signature of one flat (B-flat), and various musical symbols such as notes, rests, and slurs. The first staff has a tempo marking "Allegro" written upside down. The score is written in a sketchy, handwritten style.

Handwritten musical score for piano, consisting of four staves. The notation includes treble and bass clefs, a key signature of one flat (B-flat), and various musical symbols such as notes, rests, and slurs. The score is written in a sketchy, handwritten style.

A handwritten musical score consisting of four staves. The notation includes various notes, rests, and accidentals (sharps and flats). The score is organized into measures by vertical bar lines. The top staff begins with a treble clef and a key signature of one flat (B-flat). The second staff has a treble clef and a key signature of one sharp (F#). The third staff has a bass clef and a key signature of one flat (B-flat). The bottom staff has a bass clef and a key signature of one sharp (F#). The notation is somewhat sketchy and appears to be a working draft.

A handwritten musical score consisting of four staves. Instead of standard musical notation, the staves are filled with wavy, scribbled lines, suggesting a rough sketch or a specific type of notation. A bracket on the right side of the staves is labeled "Fin.", indicating the end of the piece. The overall appearance is that of a preliminary or experimental sketch.

IV.

$\text{♩} =$

Handwritten musical score for a piano piece, consisting of three measures. The score is written for four staves: Treble Clef (Right Hand), Treble Clef (Left Hand), Bass Clef (Right Hand), and Bass Clef (Left Hand). The music is marked *ppp* and *con sord.* (con sordano).

Measure 1: Treble (RH) has notes $\text{b}\bar{a}$ and g ; Treble (LH) has notes g and g ; Bass (RH) has notes \#g and g ; Bass (LH) has notes $\text{b}\bar{a}$ and g .

Measure 2: Treble (RH) has notes $\text{b}\bar{a}$ and g ; Treble (LH) has notes g and g ; Bass (RH) has notes \#g and g ; Bass (LH) has notes $\text{b}\bar{a}$ and g .

Measure 3: Treble (RH) has notes g and $\text{b}\bar{a}$; Treble (LH) has notes g and $\text{b}\bar{a}$; Bass (RH) has notes g and \#g ; Bass (LH) has notes g and $\text{b}\bar{a}$.

Handwritten musical score for a piano piece, consisting of three measures. The score is written for four staves: Treble Clef (Right Hand), Treble Clef (Left Hand), Bass Clef (Right Hand), and Bass Clef (Left Hand). The music is marked *pp*.

Measure 1: Treble (RH) has notes $\text{b}\bar{a}$, \#g , and \#g ; Treble (LH) is empty; Bass (RH) is empty; Bass (LH) is empty.

Measure 2: Treble (RH) has notes $\text{b}\bar{a}$ and g ; Treble (LH) has notes $\text{b}\bar{a}$ and g ; Bass (RH) is empty; Bass (LH) is empty.

Measure 3: Treble (RH) has notes g and $\text{b}\bar{a}$; Treble (LH) has notes g and $\text{b}\bar{a}$; Bass (RH) has notes g and \#g ; Bass (LH) is empty.

Handwritten musical score for the first system, consisting of four staves. The notation includes notes, rests, and dynamic markings such as *ppp* and *pp*. There are also some handwritten annotations like "bq." and "q." above the staves.

Handwritten musical score for the second system, consisting of four staves. The notation includes notes, rests, and dynamic markings like *ppp*. There are performance instructions written in German: "sehr lange" (very long) and "behalten lassen" (keep/hold). A box at the end of the system contains the word "FIN.".

V.

so weit als möglich

Handwritten musical score for the first system, measures 1-3. The score is written on a grand staff with treble and bass clefs. The music includes various dynamics such as *pp*, *p*, and *f*. There are also some handwritten annotations like "3" and "5".

Handwritten musical score for the second system, measures 4-6. The score is written on a grand staff with treble and bass clefs. The music includes various dynamics and includes a circled "p" at the beginning. There are also some handwritten annotations like "3" and "5".

Handwritten musical score for the first system. The score is written on four staves: Treble Clef (top), Alto Clef (second), Bass Clef (third), and a common time signature (bottom). The music is divided into three measures by vertical bar lines. Above the treble staff, there are three chord symbols: $G \sharp$, $F \sharp$, and $G \sharp$. The first measure contains a whole rest in the treble staff and a half note $G \sharp$ in the bass staff. The second measure contains a whole rest in the treble staff and a half note $F \sharp$ in the bass staff. The third measure contains a whole rest in the treble staff and a half note $G \sharp$ in the bass staff. There are also some handwritten annotations and symbols, such as a $\#$ in the alto staff and a $\#$ in the bass staff.

Handwritten musical score for the second system. The score is written on four staves: Treble Clef (top), Alto Clef (second), Bass Clef (third), and a common time signature (bottom). The music is divided into three measures by vertical bar lines. Above the treble staff, there are three chord symbols: $G \sharp$, $F \sharp$, and $G \sharp$. The first measure contains a whole rest in the treble staff and a half note $G \sharp$ in the bass staff. The second measure contains a whole rest in the treble staff and a half note $F \sharp$ in the bass staff. The third measure contains a whole rest in the treble staff and a half note $G \sharp$ in the bass staff. There are also some handwritten annotations and symbols, such as a $\#$ in the alto staff and a $\#$ in the bass staff.

Handwritten musical notation on a grand staff (treble and bass clefs). The notation is organized into three measures, with a large slur spanning the first two measures. Above the staff, there are handwritten notes: $\# \text{三}$, 三 , and 四 in the first measure; 三 in the second measure; and 五 and 七 in the third measure. The first measure contains a treble clef with a sharp sign ($\#$) and a bass clef with a 3. The second measure contains a treble clef with a 4 and a bass clef with an 8. The third measure contains a treble clef with a 5, a bass clef with an 8, and a bass line with notes y y b and y y y , along with a sharp sign ($\#$) and a flat sign (\flat). There are also some other handwritten symbols like 三 and 三 in the bass line of the third measure.

Handwritten musical notation on a grand staff. The notation is organized into three measures, with a large slur spanning the first two measures. Above the staff, there is a handwritten note b in the first measure. The first measure contains a treble clef with a 3 and a bass clef with an 8. The second measure contains a treble clef with a 4 and a bass clef with an 8. The third measure contains a treble clef with a 5 and a bass clef with an 8. The bass line contains notes y b and y b , along with a sharp sign ($\#$) and a flat sign (\flat). There are also some other handwritten symbols like 三 and 三 in the bass line of the first measure.

Handwritten musical score for the first system. It features a treble clef, a 3/4 time signature, and a bass clef. The music is written on four staves. The first staff has a treble clef and a 3/4 time signature. The second staff has a treble clef and a 3/4 time signature. The third staff has a bass clef. The fourth staff has a bass clef. The music consists of three measures. The first measure has a whole note chord. The second measure has a whole note chord. The third measure has a whole note chord. The notes in the first measure are G4, B4, D5. The notes in the second measure are G4, B4, D5. The notes in the third measure are G4, B4, D5. There are various accidentals and markings throughout the score.

Handwritten musical score for the second system. It features a treble clef, a 3/4 time signature, and a bass clef. The music is written on four staves. The first staff has a treble clef and a 3/4 time signature. The second staff has a treble clef and a 3/4 time signature. The third staff has a bass clef. The fourth staff has a bass clef. The music consists of three measures. The first measure has a whole note chord. The second measure has a whole note chord. The third measure has a whole note chord. The notes in the first measure are G4, B4, D5. The notes in the second measure are G4, B4, D5. The notes in the third measure are G4, B4, D5. There are various accidentals and markings throughout the score.

Handwritten musical score for the first system. The system consists of two staves: a treble clef staff on top and a bass clef staff on the bottom. The music is written in a key signature of one flat (B-flat) and a 3/4 time signature. The score is divided into four measures. Above the first measure is a circled 'P'. Above the second measure is a circled 'pp'. Above the third measure is a circled 'P'. Above the fourth measure is a circled 'pp'. The notes in the treble staff are: Measure 1: B-flat, A, G, F, E, D, C, B; Measure 2: B-flat, A, G, F, E, D, C, B; Measure 3: B-flat, A, G, F, E, D, C, B; Measure 4: B-flat, A, G, F, E, D, C, B. The bass staff contains chords and single notes, including a circled 'P' in the first measure and a circled 'pp' in the second measure.

Handwritten musical score for the second system. The system consists of two staves: a treble clef staff on top and a bass clef staff on the bottom. The music is written in a key signature of one flat (B-flat) and a 3/4 time signature. The score is divided into four measures. Above the first measure is a circled 'P'. Above the second measure is a circled 'pp'. Above the third measure is a circled 'P'. Above the fourth measure is a circled 'pp'. The notes in the treble staff are: Measure 1: B-flat, A, G, F, E, D, C, B; Measure 2: B-flat, A, G, F, E, D, C, B; Measure 3: B-flat, A, G, F, E, D, C, B; Measure 4: B-flat, A, G, F, E, D, C, B. The bass staff contains chords and single notes, including a circled 'P' in the first measure and a circled 'pp' in the second measure.

Handwritten musical score, first system. The tempo marking "alle tempo" is written above the first measure. The score consists of four measures, each with a key signature change to one sharp (F#) indicated by a sharp sign on the treble clef line. The notation includes notes, rests, and dynamic markings such as *mf* and *f*. The bass line features a steady eighth-note accompaniment.

Handwritten musical score, second system. This system continues the piece with four measures, each marked with a key signature change to one sharp (F#). The notation includes notes, rests, and dynamic markings such as *pp*, *f*, and *mf*. The bass line continues with a steady eighth-note accompaniment.

Handwritten musical score for the first system. The notation includes a treble clef, a 3/8 time signature, and a key signature of one sharp (F#). The score consists of a melody line with slurs and a bass line with chords and a large '8' marking. The music is written on a five-line staff.

Handwritten musical score for the second system. The notation includes a treble clef, a 3/8 time signature, and a key signature of one sharp (F#). The score consists of a melody line with slurs and a bass line with chords and a large '8' marking. The music is written on a five-line staff.

Handwritten musical score for a string quartet, measures 1-3. The score is written on four staves (Violin I, Violin II, Viola, and Cello/Double Bass). The key signature has three sharps (F#, C#, G#). Above the staves, there are markings for 3/8, 4/8, and 5/8 time signatures. The music consists of dense, wavy lines representing notes and rests.

Handwritten musical score for a string quartet, measures 4-6. The score is written on four staves. The first measure is heavily scribbled out. Measures 4 and 5 contain detailed musical notation with notes, stems, and accidentals. A bracket labeled "6" spans across measures 4, 5, and 6. The key signature has three sharps (F#, C#, G#).

Handwritten musical score for the first system, consisting of four staves. The notation includes various notes, rests, and dynamic markings such as *pp* and *ppz*. A bracket labeled '3' is positioned below the bottom two staves, indicating a triplet or a specific measure grouping.

Handwritten musical score for the second system, also consisting of four staves. The notation includes notes, rests, and dynamic markings like *ppz*. A box labeled 'FIN' is located at the top right of the system. A vertical label 'TEIL A' is written on the right side of the staves. The system concludes with a double bar line.

1968
Adolf Scherhanz