

7 Stücke für

Dr. Dangel

1968

Wolfgang Scherbaum

Notenheft

7 Begebenheiten (Eindrücke)

für große Orgel

1938  
Josef Scherbaum

1

lento (sehr ruhiges Tempo)

Handwritten musical notation for the first system. The treble clef staff begins with a circled 'pp' dynamic marking. The music consists of several measures with notes, rests, and accidentals (flats and sharps). The bass clef staff provides a harmonic accompaniment with notes and rests.

Handwritten musical notation for the second system. It continues the piece with similar notation, including notes, rests, and accidentals in both the treble and bass clef staves.

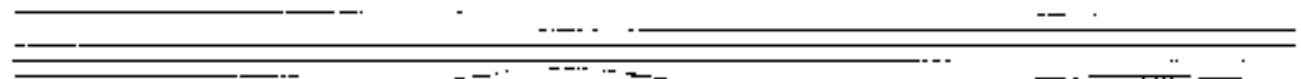
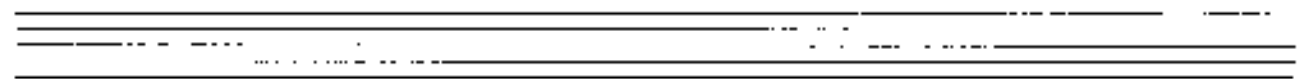
Handwritten musical notation for the third system. The notation continues, showing further development of the musical theme with various note values and accidentals.

Handwritten musical notation on two staves. The top staff is in treble clef and the bottom in bass clef. The music consists of several measures with various notes, accidentals (sharps, flats), and slurs. The notation is somewhat messy and appears to be a draft.

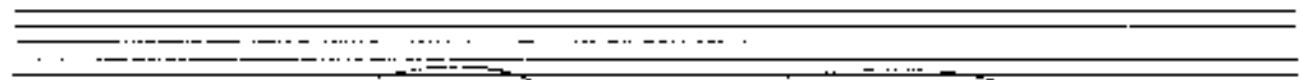
Handwritten musical notation on two staves. Similar to the first system, it features treble and bass clefs with notes, accidentals, and slurs. The handwriting is consistent with the first system.

Handwritten musical notation on two staves. This system includes a double bar line. To the right of the double bar line, there is handwritten text: "C" above "p" and "C" above "p" with "no" written between them. There are also some scribbles and additional notes on the staves.





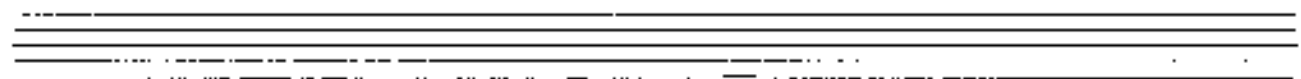
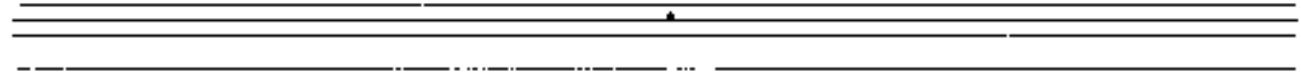
Handwritten musical notation on a grand staff. The upper staff contains a melodic line with various accidentals (flats, naturals, sharps) and a fermata. The lower staff contains a bass line with notes and rests. A large slur encompasses both staves.



Handwritten musical notation on a grand staff. The upper staff features a melodic line with a fermata and some handwritten annotations above it. The lower staff contains a bass line with notes and accidentals. A large slur encompasses both staves.



Handwritten musical notation on a grand staff. The upper staff shows a melodic line with a fermata and some handwritten notes. The lower staff contains a bass line with notes and accidentals. A large slur encompasses both staves.



3

breve (approssimata) (quinta) fine

Handwritten musical score for the first system. It features a treble clef, a key signature of one sharp (F#), and a common time signature. The notation includes a melodic line with notes and rests, a bass line with notes, and a grand staff with a circled '3' and various accidentals.

Handwritten musical score for the second system. It features a treble clef, a key signature of one flat (Bb), and a common time signature. The notation includes a melodic line with notes and rests, a bass line with notes, and a grand staff with various accidentals.

Handwritten musical score for the first system. The top staff is in treble clef and contains notes with accidentals:  $\sharp c$ ,  $b d$ ,  $b d$ ,  $\sharp c$ . Below these notes are the numbers 44, 44, 44, 44. The bottom two staves are a grand staff with piano accompaniment, showing a long note in the left hand and a chord in the right hand.

Handwritten musical score for the second system. The top staff is in treble clef and contains notes with accidentals:  $\sharp c$ ,  $b d$ ,  $\sharp c$ ,  $\sharp c$ . Below these notes are the numbers 44, 44, 44, 44. To the right of the staff is the text "1+2x git. ---". The bottom two staves are a grand staff with piano accompaniment, showing a long note in the left hand and a complex chordal structure in the right hand.

Handwritten musical score for the third system. The top staff is in treble clef and contains notes with accidentals:  $\sharp c$ ,  $\sharp c$ ,  $\sharp c$ ,  $\sharp c$ . Below these notes are the numbers 44, 44, 44, 44. The instruction "sehr breit" is written above the staff. The bottom two staves are a grand staff with piano accompaniment, showing a long note in the left hand and a complex chordal structure in the right hand.



4

color musole (non) subato (non)

Handwritten musical notation for the first system. It consists of three staves. The top staff has a treble clef and contains several notes with stems, some marked with a 'y' and a slur. The middle staff has a 4/4 time signature and contains notes with stems and slurs. The bottom staff contains notes with stems and slurs. There are some handwritten annotations and a circled '4' at the top of the page.

Handwritten musical notation for the second system. It consists of three staves. The top staff has a treble clef and contains several notes with stems, some marked with a 'y' and a slur. The middle staff contains notes with stems and slurs, including some notes with a sharp sign. The bottom staff contains notes with stems and slurs.

Handwritten musical score system 1, consisting of three staves. The top staff features a melodic line with a long slur and a fermata over the final note. The middle staff contains a complex accompaniment with many accidentals and slurs. The bottom staff shows a bass line with a few notes and a slur.

Handwritten musical score system 2, consisting of three staves. The top staff has a melodic line with a slur and a fermata. The middle staff has a complex accompaniment with many accidentals and slurs. The bottom staff shows a bass line with a few notes and a slur.

Handwritten musical score system 3, consisting of three staves. The top staff has a melodic line with a slur and a fermata. The middle staff has a complex accompaniment with many accidentals and slurs. The bottom staff shows a bass line with a few notes and a slur.

Handwritten musical score for the first system. It consists of three staves. The top staff is in treble clef and contains a melodic line with notes and rests, including a slur over two notes. The middle staff is in treble clef and contains a more active melodic line with many notes and slurs. The bottom staff is in bass clef and contains a bass line with notes and rests. The system is divided into two measures by a vertical bar line.

Handwritten musical score for the second system. It consists of three staves. The top staff is in treble clef and contains a melodic line with notes and rests, including a slur over two notes. The middle staff is in treble clef and contains a more active melodic line with many notes and slurs. The bottom staff is in bass clef and contains a bass line with notes and rests. The system is divided into two measures by a vertical bar line. There are handwritten annotations in the right margin: "(letzte + ausklingen)" and "(dieser Takt)".

Three empty musical staves at the bottom of the page, consisting of three sets of five-line staves.

frei (Handlungsbild)

Handwritten musical score for the first system. It consists of three staves. The top two staves are for a vocal line, with a treble clef on the first and a bass clef on the second. The bottom staff is for piano accompaniment, with a bass clef. The music is in common time (C) and includes various notes, rests, and dynamic markings. A vertical dashed line indicates a section change. To the right of the staves, there are handwritten notes: 'C' above the first staff, '5' below it, and 'p' below the piano staff.

Handwritten musical score for the second system. It consists of three staves. The top two staves are for a vocal line, with a treble clef on the first and a bass clef on the second. The bottom staff is for piano accompaniment, with a bass clef. The music is in common time (C) and includes various notes, rests, and dynamic markings. A vertical dashed line indicates a section change. To the right of the staves, there are handwritten notes: 'C' above the first staff, '5' below it, and 'p' below the piano staff.

D.C.  
al  
Fine

5

Adagio (Solo Flute) (Klavier ad lib.)

Handwritten musical notation for the first system. It features a treble clef, a circled 'p' dynamic marking, and a 4/4 time signature. The melody consists of quarter and eighth notes with various accidentals.

Handwritten musical notation for the second system. It includes a treble clef, a key signature change to one flat, and complex chordal accompaniment in the bass staff.

Handwritten musical notation for the third system. It shows a treble clef, a circled 'p' dynamic marking, and a melodic line with a large slur.

Handwritten musical notation for the first system. The treble staff contains notes with accidentals (flats and naturals) and a slur. The bass staff contains notes with accidentals and a slur. The system is enclosed in a large bracket on the left.

Handwritten musical notation for the second system. The treble staff contains notes with accidentals and slurs. The bass staff contains notes with accidentals and slurs. The system is enclosed in a large bracket on the left.

Handwritten musical notation for the third system. The treble staff contains notes with accidentals and slurs. The bass staff contains notes with accidentals and slurs. The system is enclosed in a large bracket on the left.

Handwritten musical notation for the fourth system. The treble staff contains notes with accidentals and slurs. The bass staff contains notes with accidentals and slurs. The system is enclosed in a large bracket on the left.

6

MAESTOSO

voll  
werk

Handwritten musical score for the first system. It features a treble clef on the top staff and a bass clef on the bottom staff. The music includes various notes, rests, and dynamic markings such as  $\text{p}$ ,  $\text{b}$ , and  $\text{\#}$ . A bracket on the left side groups the two staves. The notation is in a cursive, handwritten style.

Handwritten musical score for the second system. It features a treble clef on the top staff and a bass clef on the bottom staff. The music includes various notes, rests, and dynamic markings such as  $\text{p}$ ,  $\text{b}$ , and  $\text{\#}$ . A bracket on the left side groups the two staves. The notation is in a cursive, handwritten style.

Three sets of empty musical staves, each consisting of a treble clef staff and a bass clef staff, arranged vertically.

Handwritten musical notation for the first system. The treble clef staff contains a melody with notes: G4, A4, B4, C5, B4, A4, G4, F#4, E4, D4, C4, B3, A3, G3, F#3, E3, D3, C3. The bass clef staff contains whole notes: G2, C3, F#3, C4, G4, C5, G5, C6, G6, C7, G7, C8.

Handwritten musical notation for the second system. The treble clef staff contains a melody with notes: G4, A4, B4, C5, B4, A4, G4, F#4, E4, D4, C4, B3, A3, G3, F#3, E3, D3, C3. The bass clef staff contains whole notes: G2, C3, F#3, C4, G4, C5, G5, C6, G6, C7, G7, C8.

Handwritten musical notation for the third system. The treble clef staff contains a melody with notes: G4, A4, B4, C5, B4, A4, G4, F#4, E4, D4, C4, B3, A3, G3, F#3, E3, D3, C3. The bass clef staff contains whole notes: G2, C3, F#3, C4, G4, C5, G5, C6, G6, C7, G7, C8.



Flauto



Handwritten musical score for the first system. It consists of three staves: a single treble clef staff at the top, and a grand staff (treble and bass clefs) below. The top staff contains a melodic line with various notes and accidentals. The grand staff contains a piano accompaniment with chords and arpeggios. A circled 'pp' (pianissimo) dynamic marking is present in the first measure of the piano part. A circled '4' is written below the first measure of the piano part. The system is enclosed in a dashed-line box.

Handwritten musical score for the second system, following the same three-staff format as the first system. It features a melodic line in the top staff and piano accompaniment in the grand staff. A circled 'pp' dynamic marking is visible in the first measure of the piano part. The system is enclosed in a dashed-line box.

Handwritten musical score for the third system, also following the three-staff format. It includes a melodic line and piano accompaniment. A circled 'pp' dynamic marking is present in the first measure of the piano part. The system is enclosed in a dashed-line box.

Handwritten musical score system 1. It consists of three staves. The top staff is a treble clef with a key signature of one sharp (F#) and a 4/4 time signature. The middle staff is a grand staff (treble and bass clefs) with a key signature of one sharp and a 4/4 time signature. The bottom staff is a bass clef with a key signature of one sharp and a 4/4 time signature. The music is written in a sketchy, handwritten style with various notes, rests, and accidentals.

Handwritten musical score system 2. It consists of three staves. The top staff is a treble clef with a key signature of one sharp and a 4/4 time signature. The middle staff is a grand staff (treble and bass clefs) with a key signature of one sharp and a 4/4 time signature. The bottom staff is a bass clef with a key signature of one sharp and a 4/4 time signature. The music is written in a sketchy, handwritten style with various notes, rests, and accidentals.

Handwritten musical score system 3. It consists of three staves. The top staff is a treble clef with a key signature of one sharp and a 4/4 time signature. The middle staff is a grand staff (treble and bass clefs) with a key signature of one sharp and a 4/4 time signature. The bottom staff is a bass clef with a key signature of one sharp and a 4/4 time signature. The music is written in a sketchy, handwritten style with various notes, rests, and accidentals.

Handwritten musical score system 1. It consists of three staves. The top staff contains a melodic line with notes and accidentals. The middle staff contains a bass line with notes and accidentals, including a circled *mf* dynamic marking. The bottom staff contains a bass line with notes and accidentals. The system is enclosed in a large bracket on the left.

Handwritten musical score system 2. It consists of three staves. The top staff contains a melodic line with notes and accidentals. The middle staff contains a bass line with notes and accidentals, including a circled *f* dynamic marking. The bottom staff contains a bass line with notes and accidentals. The system is enclosed in a large bracket on the left.

Handwritten musical score system 3. It consists of three staves. The top staff contains a melodic line with notes and accidentals. The middle staff contains a bass line with notes and accidentals, including a circled *f* dynamic marking. The bottom staff contains a bass line with notes and accidentals. The system is enclosed in a large bracket on the left.

Handwritten musical score for the first system. The top staff is a treble clef with a melodic line. The bottom two staves are a grand staff with piano accompaniment. The music is in a key with one flat (B-flat major or D minor) and a common time signature. The piano part features chords and arpeggios, with some notes circled. A circled '7' is written in the first measure of the piano part.

Handwritten musical score for the second system. The top staff is a treble clef with a melodic line. The bottom two staves are a grand staff with piano accompaniment. The music continues from the first system. A circled '7' is written in the first measure of the piano part.

Handwritten musical score for the third system. The top staff is a treble clef with a melodic line. The bottom two staves are a grand staff with piano accompaniment. The music concludes with a final cadence. A circled '7' is written in the first measure of the piano part.

quasi tutti

Handwritten musical score for the first system. It consists of a vocal line on a single staff and piano accompaniment on three staves. The vocal line begins with a treble clef and a key signature of one sharp (F#). The piano accompaniment includes a bass line and two treble staves. The first measure of the piano accompaniment contains a circled treble clef and a circled key signature of one sharp. The system is marked with a fermata over the first measure of the vocal line and a 'p' dynamic marking at the end of the piano accompaniment.

Handwritten musical score for the second system. It consists of a vocal line on a single staff and piano accompaniment on three staves. The vocal line continues with the same treble clef and key signature. The piano accompaniment includes a bass line and two treble staves. The system is marked with a fermata over the first measure of the vocal line and a 'p' dynamic marking at the end of the piano accompaniment.

Handwritten musical score for the third system. It consists of a vocal line on a single staff and piano accompaniment on three staves. The vocal line begins with a treble clef and a key signature of one sharp. The piano accompaniment includes a bass line and two treble staves. The system is marked with a fermata over the first measure of the vocal line and a 'p' dynamic marking at the end of the piano accompaniment.