

Rhapsodie
für
P. Horn
und Orchester
(1968)

Notenheft



Rhapsodie
für Gitarre
und Orchester

1968 A. Scherbaum

Besetzung: Solo Gitarre

2 Flöten (Englischhorn)
2 Oboen (in c natürlich)
2 Klarinetten in C
2 Fagotte

3 Trompeten (Fass)
4 Hörner in F
3 Posunen (Fass)

Freier Schlagzeug

breit

2 Fl.
2 OB
2 Klar
in B
2 Fag
3 TR.
in F
4 Hörn
in F
3 Pos
1+2
Viol.
Br
Cb

(Gitarre (Pedaltöne) Lautstärke angepasst, wie viele 1+2 Violinen besetzt sind.)

Handwritten musical score for guitar and orchestra, BWV 467 by Adolph Scherbaum. The score consists of 11 staves. The top staff is for guitar, and the remaining 10 staves are for the orchestra. The music is in 3/4 time and features complex rhythmic patterns and accidentals. The bottom staff includes guitar-specific notation such as triplets and slurs.

Handwritten musical score for a Rhapsody for Clarinet and Orchestra. The score consists of 11 staves. The top staff contains a series of rhythmic markings resembling stems with flags. The subsequent staves contain musical notation with various notes, rests, and dynamic markings such as 'p' and 'pp'. The bottom staff includes a triplet of eighth notes and the handwritten instruction 'dim + poco pit...'. A circled 'A' is written in the top right corner.

Gitarre solo
breit

schr ruhig

stärker →

poco rit

ruhig

HM

acresl.....

Rudwig

Gitarre

72V

B₁

CtB

Handwritten musical score for guitar, violin, and cello/bass. The guitar part features a melodic line with slurs and accents. The violin and cello/bass parts provide harmonic support with sustained notes and rhythmic patterns. The score is written in 4/4 time and includes dynamic markings such as *p* and *pizz*.

Handwritten musical score for English horn. The part features a melodic line with slurs and accents, mirroring the guitar part. The score is written in 4/4 time and includes dynamic markings such as *p*.

Engl. Horn

Engl. H. (Oktave
tiefer
(Klappentaste)
notiert in C

Handwritten musical score for flute and strings. The score is written on ten staves, with the first five staves grouped by a brace on the left. The notation includes various musical symbols such as notes, rests, beams, and dynamic markings. The flute part is labeled 'Flöte (2te x spielen)' and features a complex, rhythmic melody with many slurs and accents. The string parts (Violin I, Violin II, Viola, and Cello/Double Bass) are written in a more traditional, sustained style with long notes and beams. The score is written in a clear, legible hand.

Handwritten musical score for flute and strings. The score is written on five staves: Flute (top), Violin (second), Viola (third), Cello (fourth), and Double Bass (bottom). The music is in 3/4 time and features a complex melodic line for the flute, often with triplets and slurs. The strings provide a harmonic accompaniment with sustained notes and some rhythmic patterns. Dynamic markings include *ff*, *p*, and *pp*. Performance instructions include "Solo Flöte" and "ritu...". The word "dir" is written in the bass line. The score is divided into two systems, with first and second endings marked "1." and "2.".

Handwritten musical score for flute and orchestra. The score consists of ten staves. The first nine staves are grouped by a brace on the left and are marked with dynamics: *pp*, *ppp*, *pp*, *pp*, *pp*, *pp*, *pp*, *pp*, and *pp*. The tenth staff is marked *Solo* and *pp*. The score includes various musical notations such as notes, rests, slurs, and dynamic markings. A circled *rit.* is present in the fifth staff. The bottom staff features a series of notes with sharp signs and a *frei* marking.

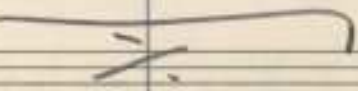
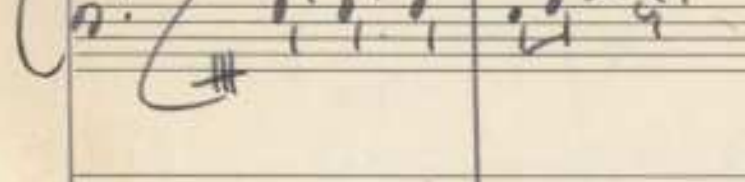
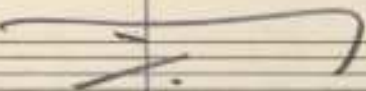
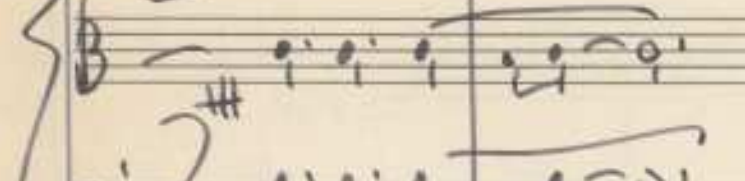
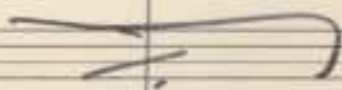
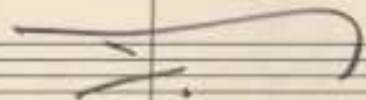
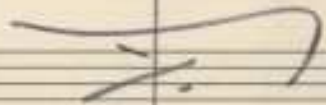
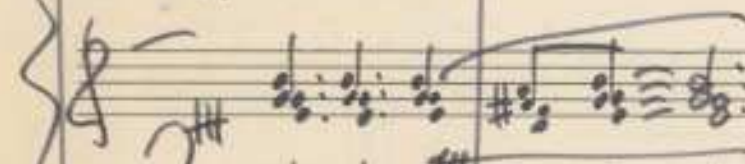
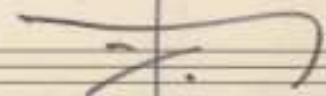
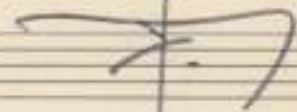
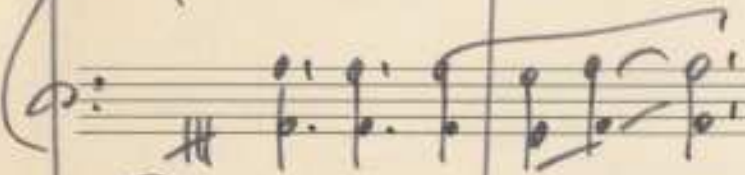
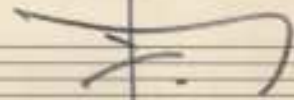
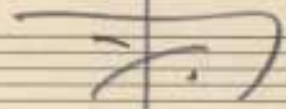
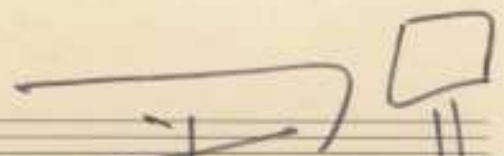
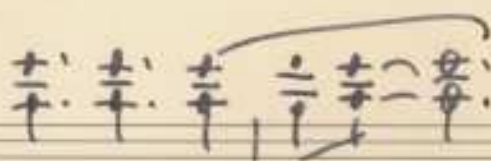
Handwritten musical score for guitar and chamber ensemble. The score consists of 11 staves. The first 10 staves are grouped into pairs with curly braces on the left. Each staff begins with a treble clef, a key signature of one sharp (F#), and a common time signature (C). The first four staves are marked 'pp' and contain a single quarter note with a stem. The notes are: G4 (first staff), A4 (second staff), B4 (third staff), and C5 (fourth staff). The next four staves are also marked 'pp' and contain a single quarter note with a stem. The notes are: D5 (fifth staff), E5 (sixth staff), F#5 (seventh staff), and G5 (eighth staff). The ninth staff is marked 'pp' and contains a single quarter note with a stem, G5. The tenth staff is marked 'pp' and contains a single quarter note with a stem, A5. The final measure of the piece is marked 'p' and contains a single quarter note with a stem, B5. The notes are: C6 (eleventh staff), D6 (twelfth staff), E6 (thirteenth staff), and F#6 (fourteenth staff). The notes are: G6 (fifteenth staff), A6 (sixteenth staff), B6 (seventeenth staff), and C7 (eighteenth staff).

Engl. Horn (altare tiefer (in C notiert))

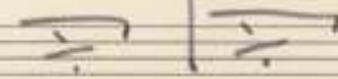
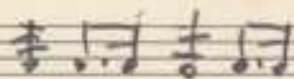
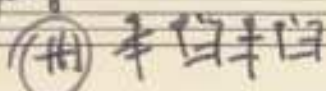
8r

8r

Proo to



Schlagzeug



Block (H)

Solo Fl. #1

Sollage

Solo Fl. #2

2: pizz

4 Takte
(Block F)

Solo
Tuba
Perc

(Block A)
4 Takte

Fin

3TR

4H

3Pos

Schlagz

Bass

Pizzicato

Bass

Schlagz

Fl. Solo

Pf

Solo

Handwritten musical notation for the first system. It consists of three staves. The top staff is labeled 'Fl. Solo' and contains a treble clef and a key signature of one flat. The middle staff is labeled 'Pf' and contains a piano dynamic marking. The bottom staff is labeled 'Solo' and contains a bass clef. Vertical bar lines divide the system into eight measures, numbered 1 through 8. The staves are otherwise empty.

Handwritten musical notation for the second system, representing the piano accompaniment. It consists of three staves. The top staff has a treble clef and a key signature of one flat. The middle staff has a piano dynamic marking. The bottom staff has a bass clef. Vertical bar lines divide the system into eight measures, numbered 1 through 8. The staves are otherwise empty.

Handwritten musical notation for the third system, representing the piano accompaniment. It consists of three staves. The top staff has a treble clef and a key signature of one flat. The middle staff has a piano dynamic marking. The bottom staff has a bass clef. Vertical bar lines divide the system into eight measures, numbered 1 through 8. The staves are otherwise empty.

Handwritten musical notation for the fourth system. It consists of two staves. The top staff contains the text '4 Takete Block (H)' written in a large, stylized font. The bottom staff is empty. A large bracket is drawn on the left side of the system, and a square box is drawn at the end of the system.

Handwritten musical score for strings and orchestra. The score consists of 11 staves. The first five staves are grouped by a brace on the left and contain various clefs (treble and bass) and notes. The sixth and seventh staves are also grouped by a brace and contain notes with dynamic markings like *pp* and *ppp*. The eighth and ninth staves are grouped by a brace and contain notes with dynamic markings like *pp* and *ppp*. The tenth and eleventh staves are grouped by a brace and contain notes with dynamic markings like *pp* and *ppp*. The score is written on aged, yellowed paper.

Schlagzeug Solo (ganz frei)

ad libitum bis > pp

Gitarre Solo (frei) \textcircled{f}

accel... \textcircled{f}

pp < > pp

ruhig beginnen — sempre accel cresc.

cresc.

FIS D Da CAPO al lunge halten

Sitarone Solo

pp

pp

großes Steigerung

f

poco rit ...

Handwritten musical score for a string quartet. The score consists of 11 staves. The first seven staves are grouped by a brace on the left. The notation includes various clefs (treble and bass), key signatures (one sharp), and time signatures (3/4 and 2/4). The notes are mostly whole and half notes, with some rests. A large, wavy scribble runs vertically down the right side of the page.

Handwritten annotations include:

- lange halten* (long hold) written across the middle staves.
- Frei Solo* written at the bottom left, with a bracket indicating a section.
- Frei* written on the right side.
- 1968* written on the right side.
- Holog Scherkin* written on the right side.

At the bottom, there is a section labeled *Schlagzeug (frei Solo)* with a single note on a staff.