

**Notenheft**

# Dreit (langsam) I.

Handwritten musical score for the first system of 'Dreit (langsam) I.'. The score is written for five instruments: 1. Violin (1. Viol.), 2. Violin (2. Viol.), Viola (Br.), Cello (Celli), and Double Bass (Bass). The music is in 4/4 time and features a key signature of one flat (B-flat). The first system consists of five measures. The 1. Violin part has a circled '1' above the first measure. The 2. Violin and Viola parts have a 'ff' dynamic marking. The Cello and Double Bass parts have a 'ff' dynamic marking and a 'vms.' marking with an upward-pointing arrow. The score includes various musical notations such as notes, rests, slurs, and accents.

Handwritten musical score for the second system of 'Dreit (langsam) I.'. The score continues for the five instruments: 1. Violin (1. Viol.), 2. Violin (2. Viol.), Viola (Br.), Cello (Celli), and Double Bass (Bass). The music is in 4/4 time and features a key signature of one flat (B-flat). The second system consists of five measures. The 1. Violin part has a circled '2' above the second measure. The 2. Violin and Viola parts have a 'ff' dynamic marking. The Cello and Double Bass parts have a 'ff' dynamic marking and a circled '2' above the second measure. The score includes various musical notations such as notes, rests, slurs, and accents.

Handwritten musical score for the first system, featuring staves 1, 2, Br., and CtB. The notation includes notes, rests, and dynamic markings. A circled number 3 is present above the first staff.

Handwritten musical score for the second system, featuring staves 1, 2, Br., and CtB. It includes lyrics "du > ....." and dynamic markings like "p". Circled numbers 4 and 5 are present above the first staff.

*sempre crescendo. —*

6

5

1.

2.

Br.

Ct.  
B.

2.

*p* *sempre cresc. →*

7

*mf*

*mf*

*mf*

*f*

*f*

*f*

*f*

Handwritten musical score for the first system, consisting of four staves. The top staff has a treble clef and contains two measures of music with notes and accidentals, and a circled '8' at the end. The second and third staves also have treble clefs and contain melodic lines with various notes and accidentals. The bottom staff is labeled 'C/B' and contains a bass line with notes and accidentals. There are several circled numbers (8, 9, 10, 11, 12) and other markings throughout the system.

Handwritten musical score for the second system, consisting of four staves. The top staff has a treble clef and contains two measures of music with notes and accidentals, and a circled '9' at the end. The second and third staves also have treble clefs and contain melodic lines with various notes and accidentals. The bottom staff is labeled 'C/B' and contains a bass line with notes and accidentals. There are several circled numbers (9, 10, 11, 12) and other markings throughout the system.

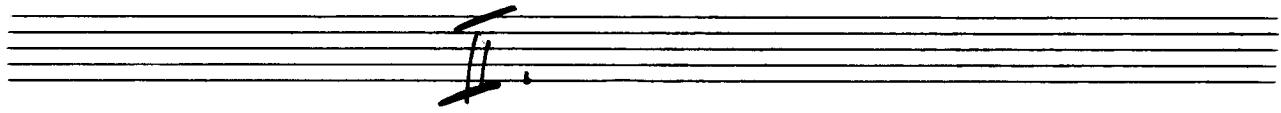
Sehr breit.

Handwritten musical score for measures 9 and 10. The score is written on four staves. The top staff is in treble clef, the second and third staves are in alto clef, and the bottom staff is in bass clef. Measure 9 is marked with a circled '9'. Measure 10 is marked with a circled '10'. The notation includes various chords, some with accidentals (sharps and flats), and some with stems pointing downwards. There are also some handwritten annotations like 'ff' and 'f'.

Handwritten musical score for measures 11 and 12. The score is written on four staves. The top staff is in treble clef, the second and third staves are in alto clef, and the bottom staff is in bass clef. Measure 11 is marked with a circled '11'. Measure 12 is marked with a circled '12'. The notation includes various chords, some with accidentals, and some with stems pointing downwards. There are also some handwritten annotations like 'ff' and 'f'. A circled '42' is written below the bottom staff in measure 12.

Handwritten musical score for a string quartet, measures 11-12. The score is written on four staves. The first staff has a treble clef and a key signature of one flat. The second staff has a bass clef. The third and fourth staves have treble clefs. The music includes various notes, rests, and dynamic markings. Handwritten annotations include "pesante" and "lunge" above the first staff, and "stark wie möglich" written above the first staff. A circled "12" is at the end of the first staff. The piece concludes with a double bar line and a fermata. Below the first staff, there are several empty staves.

F  
N.



II.

*Ador bewegt — nach stark) so rasch als möglich*

**Presto**

①

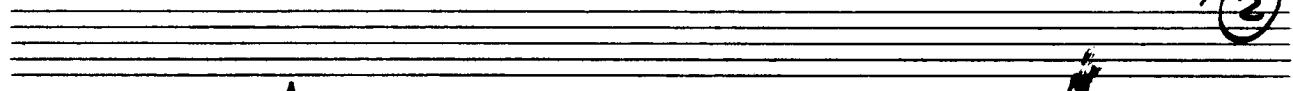
1. V.

2. V.

Br.

Celli  
+  
Bass

②





Handwritten musical score for measures 2 and 3. The system consists of three staves. The top staff has a circled '2' at the beginning and a circled '3' at the end. It contains three measures of music with a long slur over the entire system. The middle staff contains three measures of music with a long slur over the entire system. The bottom staff is labeled 'CTB' and contains three measures of music with a long slur over the entire system. A circled '52' is written in the first measure of the bottom staff. The notation includes various notes, rests, and accidentals.

Handwritten musical score for measures 4 and 5. The system consists of three staves. The top staff has a circled '4' at the end. It contains five measures of music with a long slur over the entire system. The middle staff contains five measures of music with a long slur over the entire system. The bottom staff is labeled 'CTB' and contains five measures of music with a long slur over the entire system. A circled '52' is written in the first measure of the bottom staff. The notation includes various notes, rests, and accidentals.

Handwritten musical score for measures 5 and 6. The system includes a grand staff with four staves. The top staff contains a circled measure number '5'. The second staff from the top has a circled measure number '2' and the initials 'GB'. The notation includes various notes, rests, and dynamic markings such as accents (^) and slurs.

Handwritten musical score for measures 7 and 8. The system includes a grand staff with four staves. The top staff contains a circled measure number '6'. The second staff from the top has a circled measure number '2' and the initials 'GB'. The notation includes various notes, rests, and dynamic markings such as accents (^) and slurs.

⑥

1

2

Br.

②

⑦

②

(über stark - oder rhythmisch) ⑧ ⑨

⑦

⑧

⑨

UNIS.

UNIS.

UNIS.

UNIS.

C.B.

②

⑨ ⑩ ⑪

⑨

⑩

⑪

UNIS.

UNIS.

UNIS.

UNIS.

C.B.

②

11

(alle (o) der leant.)

12

**MAGIO** sehr breit und langsam (14)

Handwritten musical score for measures 14-15. The score is written on four staves. The top staff is in treble clef, the second and third staves are in alto clef, and the bottom staff is in bass clef. The key signature is one sharp (F#). The time signature is 4/4. The music features a wide intervallic structure with many accidentals. Measure 14 contains a whole note chord with notes G4, B4, D5, and F#5. Measure 15 contains a whole note chord with notes G4, B4, D5, and F#5. The bottom staff has a circled '14' and a circled '15'.

Handwritten musical score for measures 16-17. The score is written on four staves. The top staff is in treble clef, the second and third staves are in alto clef, and the bottom staff is in bass clef. The key signature is one sharp (F#). The time signature is 4/4. The music features a wide intervallic structure with many accidentals. Measure 16 contains a whole note chord with notes G4, B4, D5, and F#5. Measure 17 contains a whole note chord with notes G4, B4, D5, and F#5. The bottom staff has a circled '16' and a circled '17'.

**D.C. al Fin.**

# III.

Sehr ruhig) (auf 6 Saiten)  
Lento.

1. (A)

2. (B)

Br.

Cel +  
Bass:

Solo Viol.

(A) (B)

(A) subito (gr. too.) pp

Cel +  
Bass:

**(B)** Solo Violine (so ruhig - wie möglich) (frei) **(C)**

Solo) frei (sul G) **(D)**

**(E)**

**(F)** FINE

kleine G.P. ||

pubato

sehr langsam halten

ad. lit.) das eine Oktave höher

**(D)**



IV.

Prestissimo (so rasch - als möglich)

1

1v.  
2v.  
Br.  
Celli  
Bass

(*alle last*) stacc.

2

62

Handwritten musical score for system 3. The treble clef staff contains a melodic line with notes and accidentals (flats and naturals). The three bass clef staves below contain rhythmic patterns represented by vertical lines with stems and beams. A circled '3' is located at the end of the system.

Handwritten musical score for system 4. The treble clef staff contains a melodic line with notes and accidentals (flats and naturals). The three bass clef staves below contain rhythmic patterns represented by vertical lines with stems and beams. A circled '4' is located at the end of the system.

Handwritten musical score for the first system, measures 1-5. The system includes staves for Violin 1 (V1), Violin 2 (V2), Viola (BR), and Cello/Double Bass (CTB). Measure numbers 1, 2, and 5 are circled. The notation includes various notes, rests, and dynamic markings.

Handwritten musical score for the second system, measures 6-12. The system includes staves for Violin 1 (V1), Violin 2 (V2), Viola (BR), and Cello/Double Bass (CTB). Measure numbers 6 and 12 are circled. The notation includes various notes, rests, and dynamic markings.

Handwritten musical score for system 9. The system includes a treble clef staff with a melodic line and a circled '9' at the end. Below are three staves (violin, viola, and cello) with rhythmic patterns of eighth notes and slurs. The notation is in a key with one sharp (F#) and a 2/2 time signature.

Handwritten musical score for system 8. The system includes a treble clef staff with a melodic line and a circled '8' at the end. Below are three staves (violin, viola, and cello) with rhythmic patterns of eighth notes and slurs. The notation is in a key with one sharp (F#) and a 2/2 time signature.

Handwritten musical score for the first system, measures 8-9. The system consists of four staves. The top staff is in treble clef and contains a melodic line with a '1 1 1' marking above the first measure and a circled '9' at the end. The second and third staves are in treble and bass clefs respectively, with long horizontal lines indicating sustained notes. The bottom staff is in bass clef and contains a bass line with a circled '8' at the beginning and a circled '9' at the end. The music is in 2/4 time.

Handwritten musical score for the second system, measures 10-12. The system consists of four staves. The top staff is in treble clef and contains a melodic line with accents (^) above several notes and a circled '10' at the end. The second and third staves are in treble and bass clefs respectively, with long horizontal lines indicating sustained notes. The bottom staff is in bass clef and contains a bass line with a circled '12' at the beginning and a circled '10' at the end. The music is in 2/4 time.

Handwritten musical score for measures 11 and 12. Measure 11 features a melodic line with a 7-measure rest, a violin line with a whole note chord, a viola line with a whole note chord, and a cello/bass line with a whole note chord. Measure 12 features a melodic line with a 7-measure rest, a violin line with a whole note chord, a viola line with a whole note chord, and a cello/bass line with a whole note chord.

Handwritten musical score for measures 11 and 12. Measure 11 features a melodic line with a 7-measure rest, a violin line with a whole note chord, a viola line with a whole note chord, and a cello/bass line with a whole note chord. Measure 12 features a melodic line with a 7-measure rest, a violin line with a whole note chord, a viola line with a whole note chord, and a cello/bass line with a whole note chord.

12

13

Handwritten musical score for measures 12 and 13. The score consists of four staves. The first staff is in treble clef, the second in alto clef, the third in bass clef, and the fourth in bass clef with a circled '2' below it. The music is in 2/4 time. Measure 12 shows a melodic line in the first staff and accompaniment in the other three. Measure 13 shows a continuation of the melodic line in the first staff and accompaniment in the other three.

14

Handwritten musical score for measures 14 and 15. The score consists of four staves. The first staff is in treble clef, the second in alto clef, the third in bass clef, and the fourth in bass clef with a circled '2' below it. The music is in 2/4 time. Measure 14 shows a melodic line in the first staff and accompaniment in the other three. Measure 15 shows a continuation of the melodic line in the first staff and accompaniment in the other three.

Handwritten musical score for measures 14-15. The score consists of four staves. The top staff is a grand staff with a treble clef and a key signature of one sharp (F#). It contains a melodic line with a slur over the first two notes and a circled measure number '15' at the end. The second and third staves are also in treble clef with a key signature of one sharp, containing a rhythmic accompaniment. The bottom staff is in bass clef with a key signature of one sharp, containing a bass line. A circled measure number '14' is at the beginning of the bottom staff.

Handwritten musical score for measures 16-17. The score consists of four staves. The top two staves are empty. The third staff contains the handwritten text: "letzten 4 Takte — nachwärts — bei 2. Viol. Br. C+B." A circled measure number '16' is at the end of the staff. The bottom staff contains a circled measure number '17' at the beginning.



16

17

22

Handwritten musical score for the first system, measures 18-20. The notation includes notes, rests, and dynamic markings. A circled '18' is at the end of the first staff.

Handwritten musical score for the second system, measures 21-24. The notation includes notes, rests, and dynamic markings. A circled '20' is at the end of the first staff.

20

21

cb  
a2

22

cb  
a2

dicere 4 Takte ( alle) ad. libitum) Tremolo).

23

02

24

FINE

*Adolf Scherbaum*  
Lig. Ples  
*Scherbaum*